



Jeep Grand Cherokee WL 2022-CURRENT Rock Sliders with Step

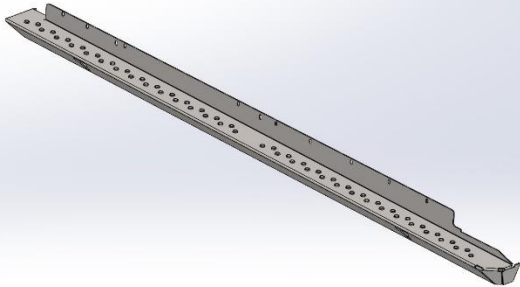
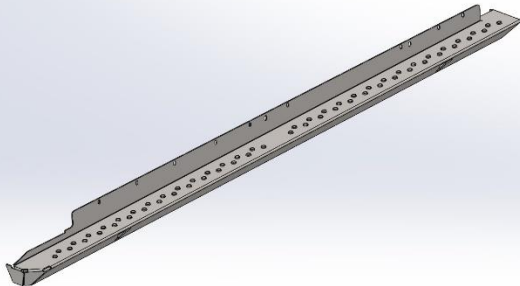
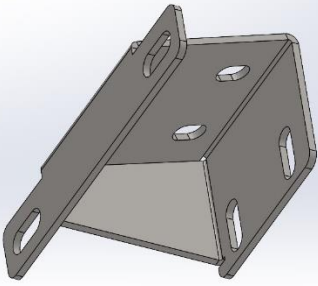
IMPORTANT! – READ BEFORE INSTALLATION

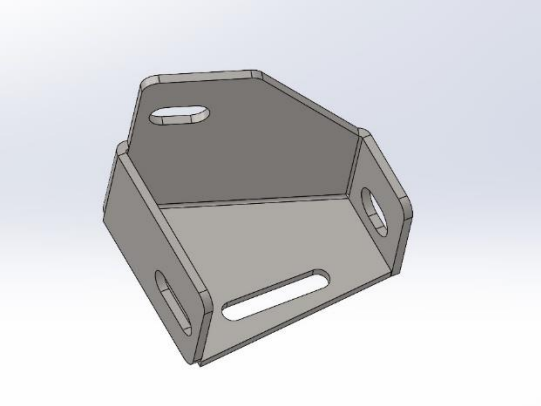
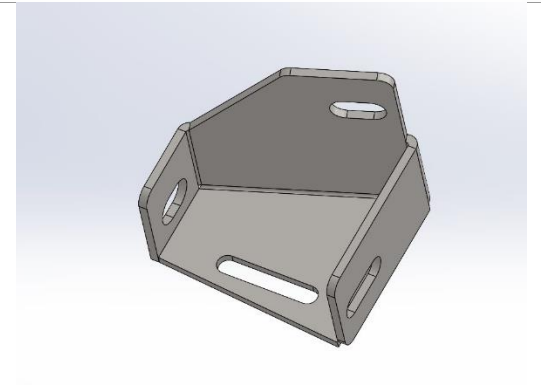
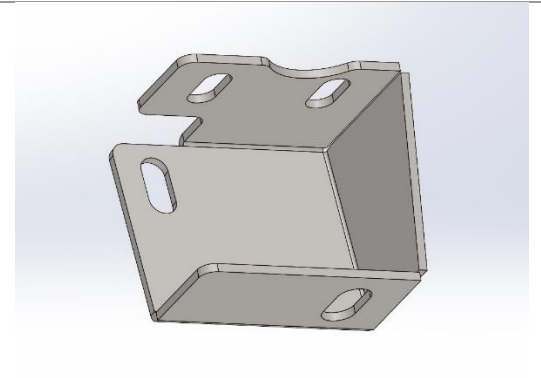
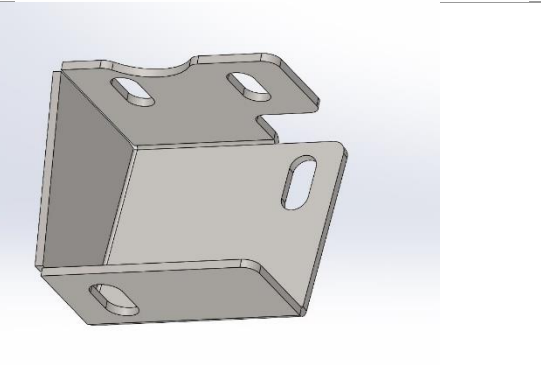
- When installed in accordance with these instructions, the front protection bar does not affect the operation of the vehicles Curtain airbags.
- This product must be installed exactly as per these instructions using only hardware supplied.
- Take a few moments to read instructions thoroughly before beginning work.
- In the event of damage to any component please contact OFFROAD ANIMAL to arrange repair/replacement of components.
- Do not use this product for any vehicle make or model other than that specified on these instructions.
- Do not remove labels from this product.
- This product and its fixings must not be modified in any way unless stated in these fitting instructions.
- The installation of this product is recommended for trained personnel.
- These instructions are correct at time of publication. OFFROAD ANIMAL cannot be held responsible for the impact of any changes subsequently made by the vehicle manufacturer. If you find something has changed please contact us to let us know!
- During installation it is the duty of the installer to check correct operation/clearances of all components.
- If Instructions are to be printed for reference in the workshop, it is recommended that they are printed in colour, for best legibility.
- Fitting Time: 3 hours

PARTS LISTING

IMPORTANT: Check all parts are present before beginning work! Contact OFFROAD ANIMAL if something is missing.

Main Parts – In the Box

Qty	Part Number	Description	Image
1	B-0915R	WL SLIDER STEP RH	
1	B-0915L	WL SLIDER STEP LH	
6	B-0916	Slider Step bracket	

<p>1</p>	<p>B-1018R</p>	<p>WL SLIDER END BRACKET RH</p>	
<p>1</p>	<p>B-1018L</p>	<p>WL SLIDER END BRACKET LH</p>	
<p>1</p>	<p>B-1019R</p>	<p>WL SLIDER END BRACKET FRONT RH</p>	
<p>1</p>	<p>B-1019L</p>	<p>WL SLIDER END BRACKET FRONT LH</p>	

Small Parts – Contained in Small Parts Kit Bag

Qty	Part Number	Description
2	OFA-Logo	Offroad Animal Metal Logo plate
20	M6x20 BHCS B/Z	M6 x 20 Button Head Cap Screw, Black Zinc
18	M6 FW B/Z	M6 Flat Washer Black zinc
4	M8 x 20 BHCS Blk Zn	M8 x 20 Button Head Cap Screws, black Zinc plate
4	M8 FW Blk Zn	M8 Flat Washer Black Zinc plate
20	M8 Hexsert	M8 Hexsert
16	M8 x 20 CS	M8 x 20 Cap Screw Zinc plate
48	M8 FW	M8 Flat Washer Zinc plate
32	M8 FN	M8 Flange nut
32	M8 x 30 Hex	M8 x 30 Hex Bolt, gr 8.8 Zinc plate
2	M6 MGW	M6 Mud Guard Washer
2	M6 FN	M6 Flange Nut

TOOLS REQUIRED

The following tools will be required to install the product.

Hand Tools	Power Tools	Workshop Equipment
<ul style="list-style-type: none"> -8mm Spanner -10mm Spanner -13mm Spanner (or wrench for you yanks) -4mm Allen Key -5mm Allen Key -6mm Allen Key -Nutsert Gun -9mm Drill bit (or imperial equivalent) -Trim tool or flat screw driver 	<ul style="list-style-type: none"> Power Drill 	<ul style="list-style-type: none"> -Trolley, bottle, or scissor Jack -Nutsert Gun

GENERAL WARNINGS

Wear eye protection when drilling. I can tell you a whole story about how this guy I used to work with got metal in his eye and it rusted in there. It was soooooo gross. His eye was leaking nasty fluid and he needed 3 surgeries to fix it. So wear bloody eye protection

Install should take around 2 hours or longer if you're unsure of this type of work.



1. Remove 2 x per corner screws holding in felt liner. 8 screws in total

Tools Required

8mm spanner

Fasteners

Discard



2. Crawl under the vehicle and use a trim tool or flat screw driver to release all the quick clips holding the sill cover on.
3. Repeat for otherside

Tools Required

Trim tool or flat screw driver

Fasteners



4. Using a plastic trim tool or a rag wrapped over a flat screw driver, separate the sill panel from the vehicle.
5. Once all the clips have been broken off step on the sill cover to drop it off the vehicle.
6. Remove all the broken clips on the side of the vehicle. A trim tool will make this easier

TOOLS REQUIRED

Trim tool or flat screw driver

FASTENERS

None

Right hand side rear of vehicle shown.



7. Starting from the rear skip the first two holes and then mark the next 2 and open the holes to 9mm or imperial equivalent to suit M6 nutserts, skip the hex hole and the open the next hole. Basically, you want the nutsert to just barely fit into the hole.

TOOLS REQUIRED

**9mm Drill bit and
power drill**

FASTENERS

Right hand side front of vehicle shown.



8. Moving to the front, with the front door open. Open up all the small round holes except the forward most one and the one that is obscured by the rear door.

TOOLS REQUIRED

9mm Drill bit, Power Drill

FASTENERS



9. Using a nutsert gun install M6 nutserts into each hole you drilled larger.
10. Repeat for other side

TOOLS REQUIRED
Nutsert gun

FASTENERS
M6 Nutserts



11. Install the M8 hexserts in all the hex holes- 2 on each side face and 8 underneath on each side
12. Repeat for other side.

TOOLS REQUIRED

Nutsert Gun

FASTENERS

M8 Hexsert (20)



- 13. Install 3 per side B-0916 slider step brackets as shown.
Using M8 hex bolts and washers through pinch then into a flange nut, and M8 x 30 Cap screws through into hexserts.
- 14. Leave bolts finger tight only

TOOLS REQUIRED

6mm Allen Key
13mm Spanner

FASTENERS

M8 x 30 Cap screws (12)
M8 x 30 Hed bolt (12)
M8 FW (24)



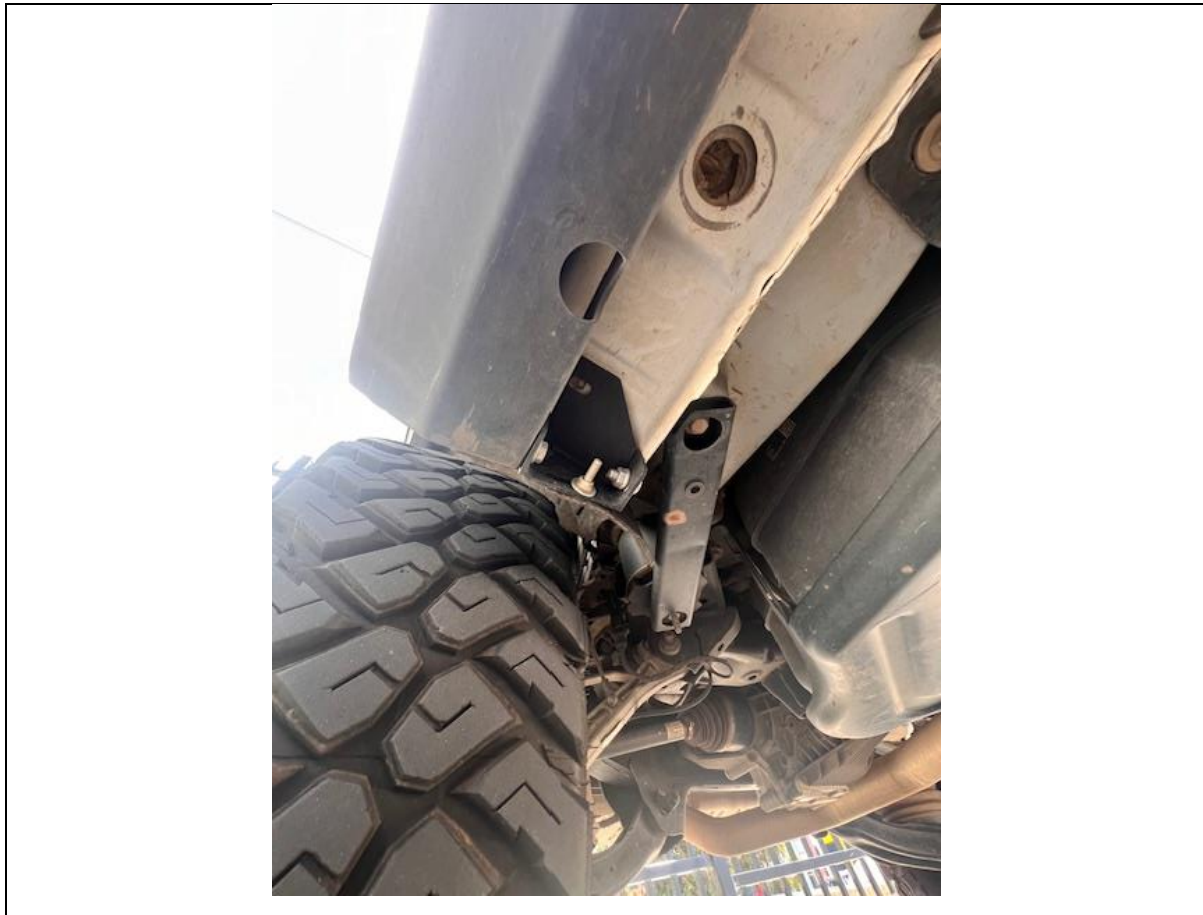
- 15. Front bracket shown here fitted, using the front bolt through pinch. Remove factory bolt and reuse to install bracket B-1019. Leave bolts finger tight
- 16. Repeat for other side

TOOLS REQUIRED

- 6mm Allen Key
- 13mm Spanner**

FASTENERS

- M8 x 30 Hex bolt (2)
- M8 Flat Washers (4)
- M8 x 30 Cap screw(2)
- M8 FN (2)



17. Install rear bracket B-1018R as show with same hardware as previous step. Leave bolts finger tight.
18. Fit an M6 bolt through felt into rear bracket as shown. Use the Mud guard washer on the felt side.
19. Repeat for other side

TOOLS REQUIRED

6mm Allen key
16mm Socket

FASTENERS

M8 x 30 Hex bolt (4)
M8 Flat Washers (4)
M8 x 30 Cap screw(2)
M8 FN (4)
M6 x 20



20. Open both doors
21. With the help of a friend, or a jack or lifting trolley, lift the slider step up to the vehicle.
22. Line up the side holes of the slider with the M6 nutserts and secure in place with a few M6 button head cap screws.

TOOLS REQUIRED**4mm Allen Key****FASTENERS****M6 x 20 BHCS
M\6 Flat Washers**



23. Fit all M6 bhcs and flat washers into the side of the slider into M6 nutserts

TOOLS REQUIRED

4mm Allen Key

FASTENERS

M6 x20 Cap Screw (18)
M6 flat washers (18)



- 24. Fit M8 x 30 hex bolts washers and flange nuts to secure slider step to all the 5 brackets you already fit to the underside.
- 25. Once all bolts are in place, torque each bolt. If your super anal about torque specs google is your friend.
- 26. Repeat for other side.

TOOLS REQUIRED

13mm spanner

FASTENERS
M8 x 30 Hex Bolt (16)
M8 FW (16)
M8 FN (16)



- 27. Trim any felt liner at the front or back that is overhanging and make it look nice and neat.
- 28. You're all done, go enjoy

TOOLS REQUIRED

FASTENERS