



Jeep Grand Cherokee WL and L Overland & Trailhawk (incl. 4xe) 2022-on Pre Runner / Steel Front Bumper

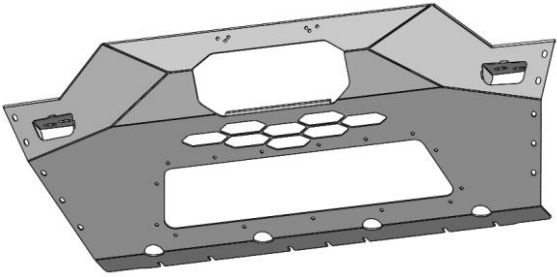
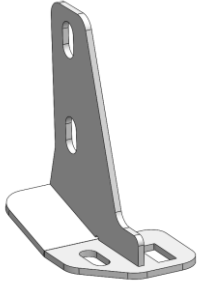
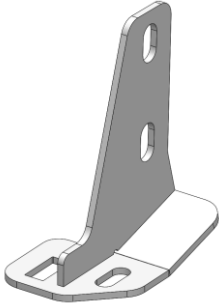
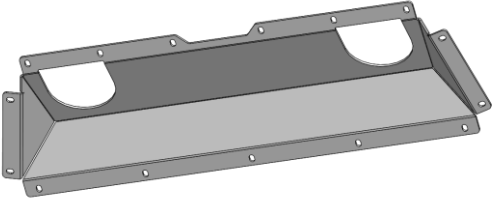
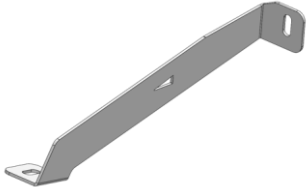
IMPORTANT! – READ BEFORE INSTALLATION

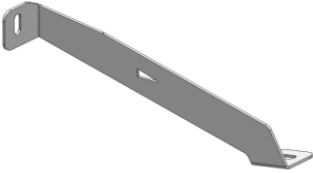
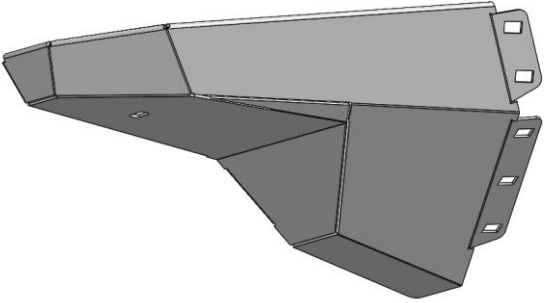
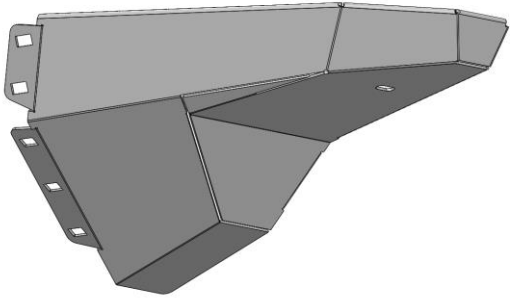
- When installed in accordance with these instructions, the front protection bar does not affect the operation of the vehicles SRS airbags.
- This product must be installed exactly as per these instructions using only hardware supplied.
- Take a few moments to read instructions thoroughly before beginning work.
- In the event of damage to any bar component please contact OFFROAD ANIMAL to arrange repair/replacement of components.
- Do not use this product for any vehicle make or model other than that specified on these instructions.
- Do not remove labels from this product.
- This product and its fixings must not be modified in any way unless stated in these fitting instructions.
- The installation of this product is recommended for trained personnel.
- These instructions are correct at time of publication. OFFROAD ANIMAL cannot be held responsible for the impact of any changes subsequently made by the vehicle manufacturer. If you find something has changed please contact us to let us know!
- During installation it is the duty of the installer to check correct operation/clearances of all components.
- If Instructions are to be printed for reference in the workshop, it is recommended that they are printed in colour, for best legibility.

PARTS LISTING

IMPORTANT: Check all parts are present before beginning work! Contact OFFROAD ANIMAL if something is missing.

Main Parts – In the Box

Qty	Part Number	Description	Image
1	PR-JGC-WL-22-ASM1	WL Pre Runner Centre Plate Welded Assy	
1	PR-JGC-WL-22-ASM2R	WL Pre Runner Chassis Mount Assy RH	
1	PR-JGC-WL-22-ASM2L	WL Pre Runner Chassis Mount Assy LH	
1	B-0839	WL Pre Runner Centre Reinforcement	
1	B-0889R	WL Pre Runner Wing Brace Bracket	

<p>1</p>	<p>B-0889L</p>	<p>WL Pre Runner Wing Brace Bracket</p>	
<p>1</p>	<p>W-0064R</p>	<p>WL Pre Runner Wing</p>	
<p>1</p>	<p>W-0064L</p>	<p>WL Pre Runner Wing</p>	

Small Parts – Contained in Small Parts Kit Bag

Qty	Part Number	Description
2	NP-COM-M8-200-ASM0	M8 Nut Plate 200mm
2	M5X20 PAN	SCREW, PAN HEAD PHILLIPS, M5X20X0.8 GR4.6 ZP
2	M5 FLANGE NUT	Flange Nut, M5x0.8 G8.8 ZP
15	M6 FLAT WASHER BLACK ZINC	M6 Flat Washer, 12x6.1x1, ISO4042 ZnNi BLACK PASSIVATED FINISH
15	M6x16 BHCS BLACK ZINC	SCREW, BUTTON HEAD CAP, M6X16X1 GR12.9, ISO4042 ZnNi BLACK PASSIVATED FINISH
15	M6 FLANGE NUT	Flange Nut, M6x1 G8.8 ZP
2	M8 X 25 HEX	Bolt Hex, M8X25x1.25, GR8.8 ZP
2	M8 X 40 HEX	Bolt Hex, M8X40X1.25, GR8.8 ZP
4	M8 HD FLAT WASHER	M8 FLAT WASHER - High Tensile 19x8x1.9mm
10	M8 FLAT WASHER- BLACK ZINC	M8 FLAT WASHER, 16.5x8.4x1.2, ISO4042 ZnNi BLACK PASSIVATED FINISH
10	M8 X 20 BHCS BLACK ZINC	SCREW, BUTTON HEAD CAP, M8X20X1.25, ISO4042 ZnNi BLACK PASSIVATED FINISH
12	M8 Cage nut	NUT, CAGE, M8X1.25 ZINC PLATE
2	M10 x 20	Bolt Hex, M10X20x[1.5], GR8.8 ZP
2	M10X25 BHCS BLACK ZINC	SCREW, BUTTON HEAD CAP, M10X25X1.5 GR12.9, ISO4042 ZnNi BLACK PASSIVATED FINISH
2	M10 Flat Washer	M10 FW
2	M10 FW LHD BLACK ZINC	WASHER, FLAT M10X28.5X2.5, ISO4042 ZnNi BLACK PASSIVATED FINISH
4	M10 FLANGE NUT	Flange Nut, M10x1.5 G8.8 ZP
4	M12X30	Bolt Hex, M12X30x1.75, GR8.8 ZP
4	M12 FLAT WASHER	M12 FW
4	M12 FLANGE NUT	Flange Nut, M12x1.75 G8.8 ZP

TOOLS REQUIRED

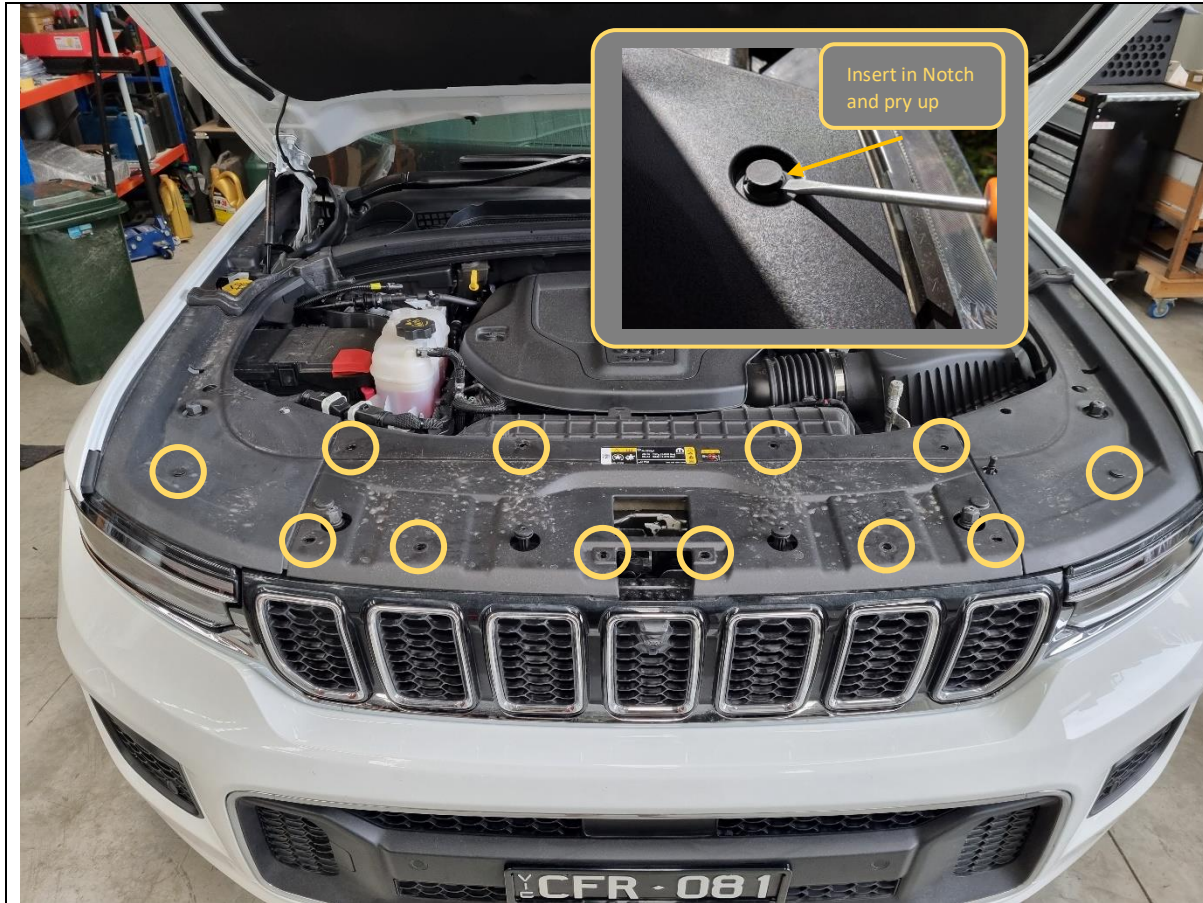
The following tools will be required to install the product.

Hand Tools	Power Tools	Workshop Equipment
Metric Socket Set 8-19mm	Electric/Air Impact Driver (Optional)	Masking Tape
Socket Extension Bar	Air Hacksaw	Marker Pen
Metric Spanner Set 8-19mm	or Oscillating Multi Tool	
Hex (Allen) Key Set 4-6mm	or Angle Grinder	
Torx Key Set	Or Jigsaw	
Flat blade screwdriver		
Trim tool		
Utility knife		

WORKSHOP SAFETY

It is the responsibility of the installer to always complete works in a safe manner. Make sure the following safety equipment is available and precautions are observed whilst fitting this product.

<p>Hearing Protection</p> 	<p>Always wear ear protection when using power tools.</p>
<p>Eye Protection</p> 	<p>Ensure eye protection is always worn when cutting or drilling.</p>
<p>Manual Handling</p> 	<p>Do not attempt to lift bar assemblies or rock sliders on your own.</p> <p>Always use two people to lift or use mechanical Lifting aid such as hydraulic lifting trolley.</p>
<p>Vehicle Support</p> 	<p>Always ensure vehicle is properly supported when working on it. Do not attempt to fit products whilst suspension work is being carried out. Do not work under a vehicle supported only by a jack.</p>



This product is designed to work in conjunction with the Offroad Animal Hidden Winch Mount, Recovery Points and Nudge Bar.

Please read and familiarise yourself with ALL fitting instructions for the products you are installing prior to commencing.

1. Open the bonnet.
2. Remove 12x plastic push rivets by levering center section upwards using flat bladed screwdriver or trim tool, as shown.
3. Lift and remove the radiator cover.

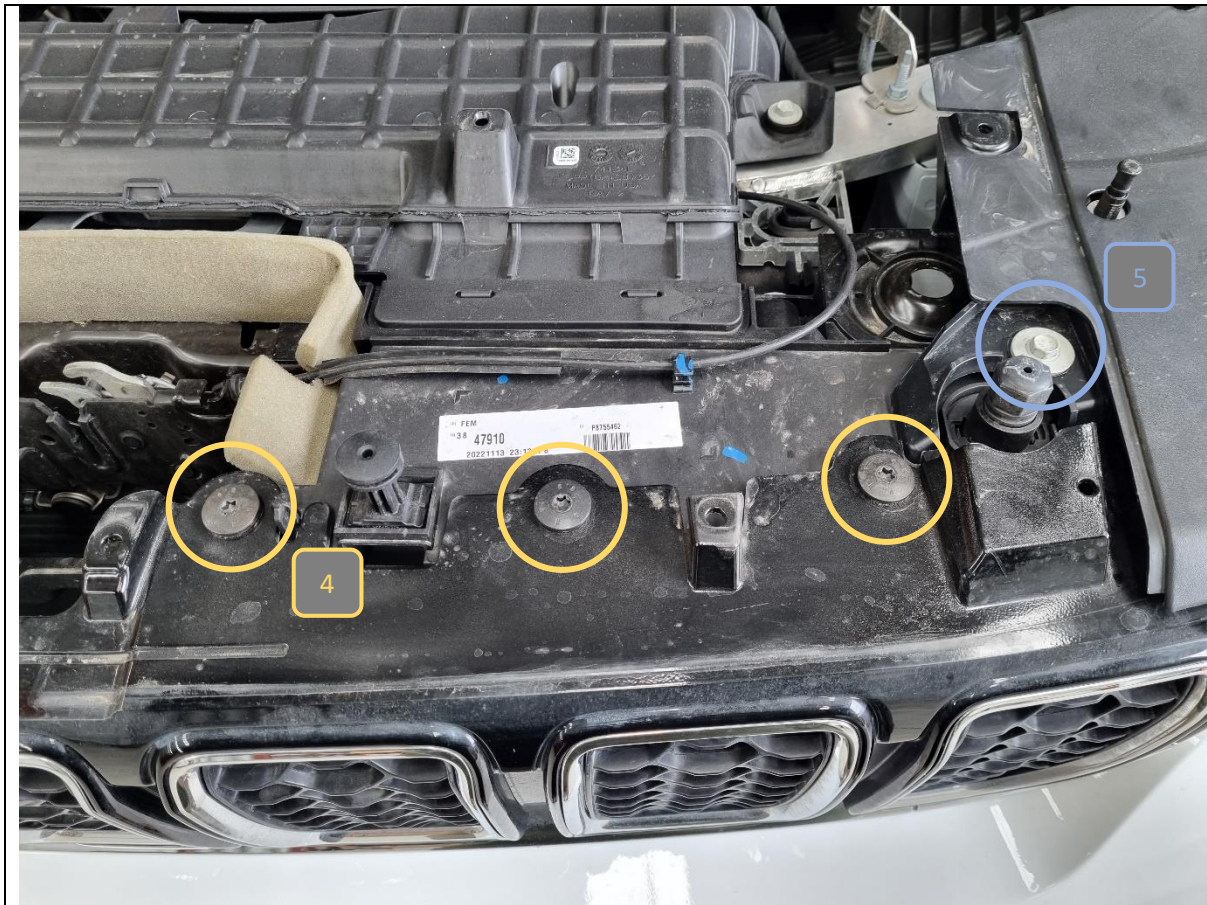
TOOLS REQUIRED

Flat Blade Screwdriver
or
Trim Tool

FASTENERS

12x Plastic Push Rivets

Retain for Reassembly



4. Remove 6x T40 Torx screws from the top of the grille.
5. Remove 2x 10mm hex head bolts from the top of the grille.

TOOLS REQUIRED

T40 Torx driver
10mm socket/spanner

FASTENERS

6x T40 Torx screws
2x 10mm hex head bolts
Retain for Reassembly



6. Remove 9x 10mm hex head bolts from the bottom of the bumper.

7. Remove 2x plastic push rivets from the bottom of the bumper.

Please note the bolt arrangement on the Trailhawk may be different to the Overland shown. In any case, remove all fasteners on the bottom of the bumper.

TOOLS REQUIRED

10mm socket/spanner

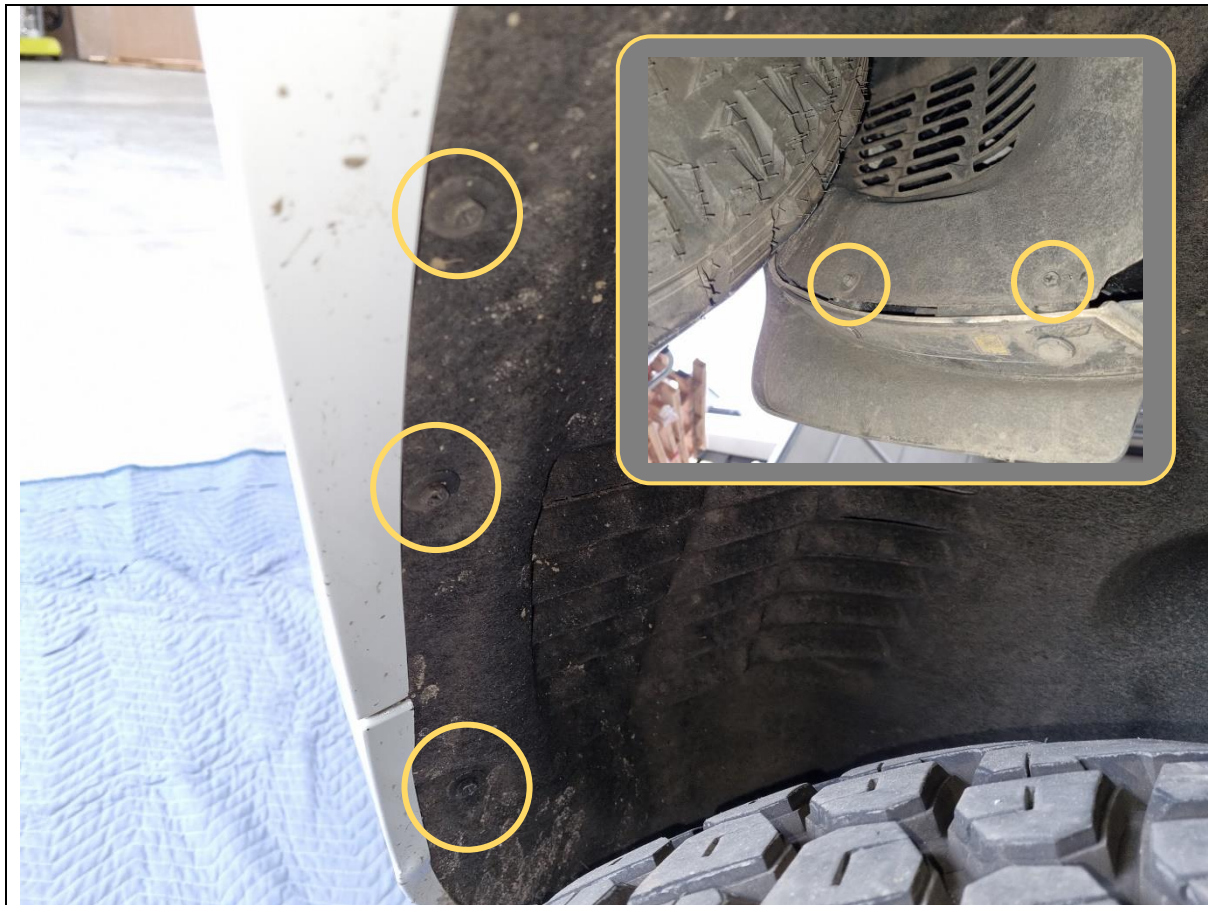
Flat Blade Screwdriver
or
Trim Tool

FASTENERS

9x 10mm hex head bolts

2x Plastic Push Rivets

Retain for Reassembly



8. On each side, remove 5x 8mm hex head screws securing the wheel arch liner to the bumper.

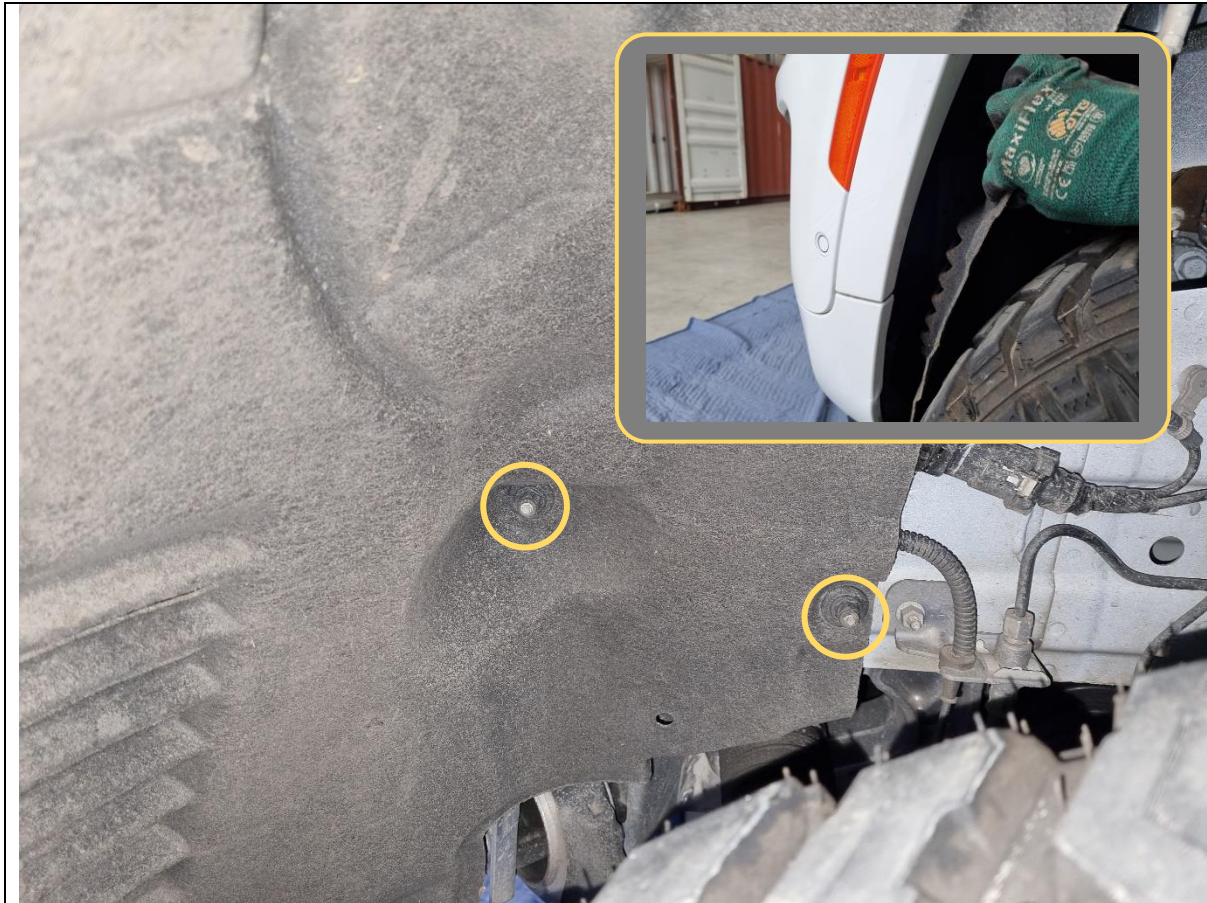
TOOLS REQUIRED

8mm socket/spanner
or
Phillips Head screwdriver

FASTENERS

5x 10mm hex head bolts

Retain for Reassembly



9. Remove at least 3x of the black plastic nuts securing the wheel arch liner to the body using a 10/11mm socket.

10. Pull down on the front half of the wheel arch liner to expose the inside of the bumper.

Note: Fully removing the wheel arch liner will make it easier for fitment later but is not mandatory.

TOOLS REQUIRED

10/11mm socket

FASTENERS

Plastic nuts

Retain for Reassembly



11. Pull and release the clips retaining the flare to the bumper + quarter panel.

It is easiest to insert an 8mm socket on the inside and push the trim clips outwards (see inset photos).

12. Use a rag to protect the flare and to prevent it from flapping around.

TOOLS REQUIRED

8mm socket (optional)

Rag

FASTENERS



13. On both sides, remove the 10mm hex head bolt securing the bumper to the quarter panel.

14. Disconnect sensor looms, camera loom and washer hoses on both sides of the bumper (see inset photos).

There should be 1x sensor loom plug each side, a camera loom plug on the LH, and washer hose on the RH.

TOOLS REQUIRED

10mm socket

FASTENERS

2x 10mm hex head bolts

Retain for Reassembly



15. If headlight washers are equipped, pull out the plastic cover cap and unclip it from the plastic washer stem.

TOOLS REQUIRED

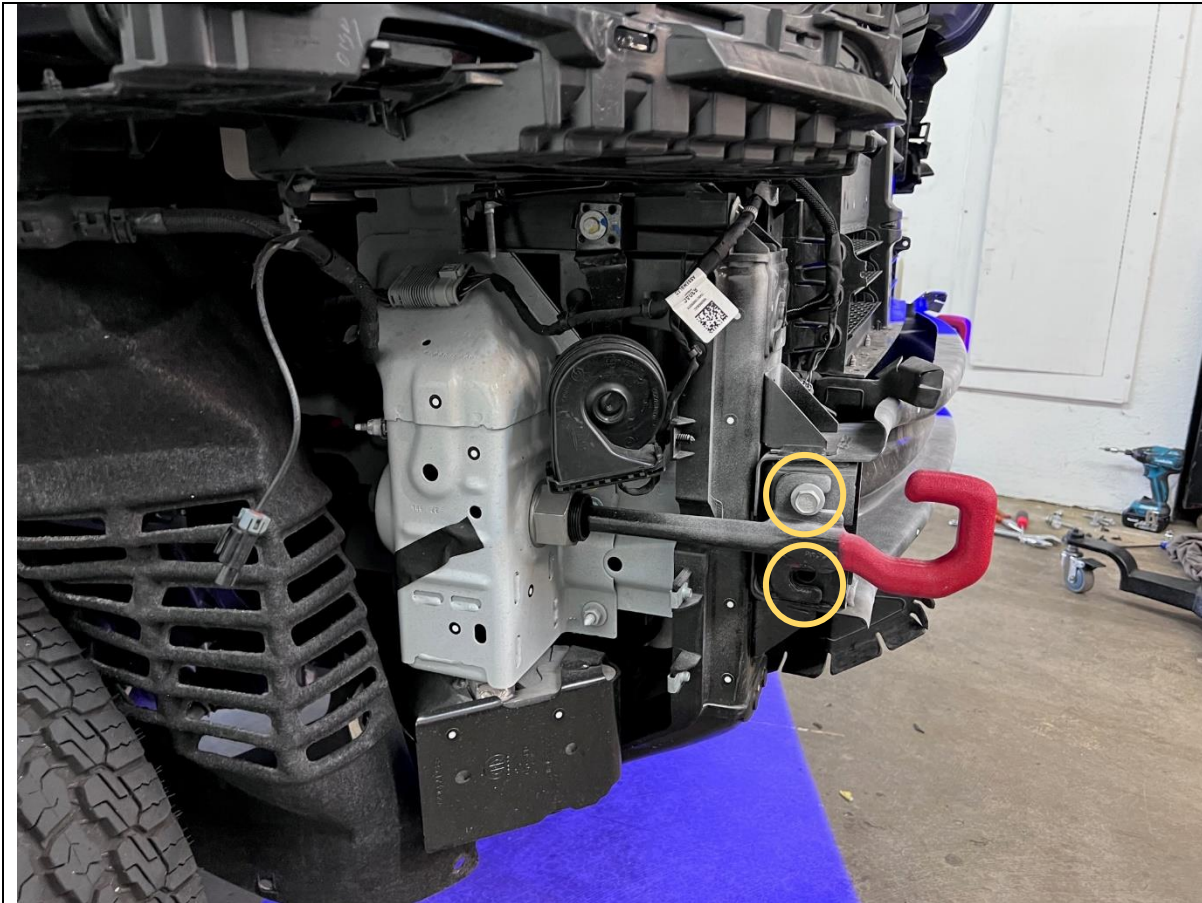
FASTENERS



16. Remove the bumper by releasing the clips on either side and lifting the top flap of the grille over the bonnet rubber stops.

TOOLS REQUIRED

FASTENERS



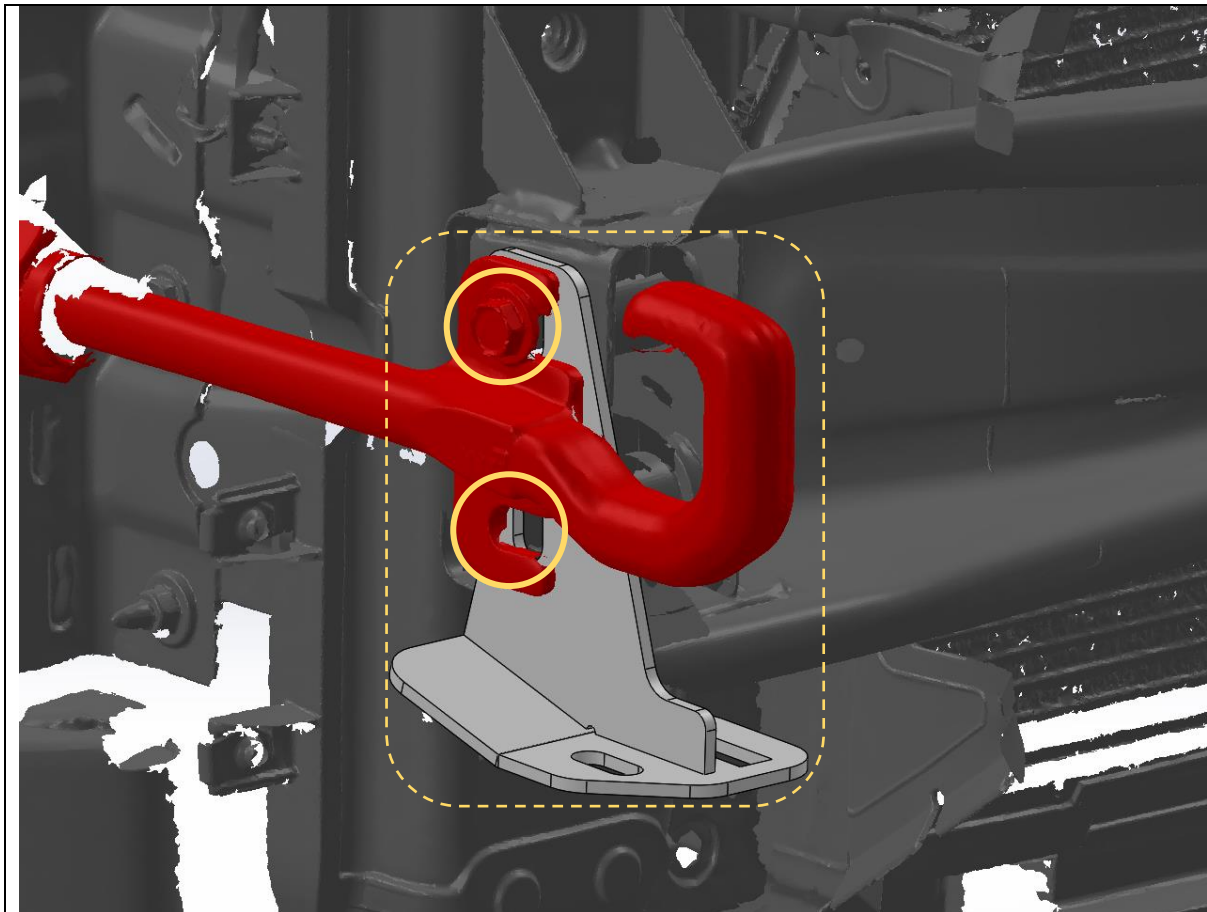
- 17. The Offroad Animal Pre Runner is designed to mount to either the genuine Jeep tow hooks or Offroad Animal Recovery Points.
- 18. If Offroad Animal Recovery Points are to be used, install the recovery points now. Refer to recovery point fitting instructions for installation procedure.
- 19. If factory tow hooks are being used, remove the 2x 16mm hex head bolts on each side.

TOOLS REQUIRED

16mm socket/spanner

FASTENERS

4x 16mm hex head bolts



20. The pre runner chassis mount can be installed in several configurations. If fitting an Offroad Animal Nudge Bar, also install the nudge bar mount during this step (refer to Nudge Bar fitting instructions for details).

- a. Config 1 – With genuine Jeep tow hooks only

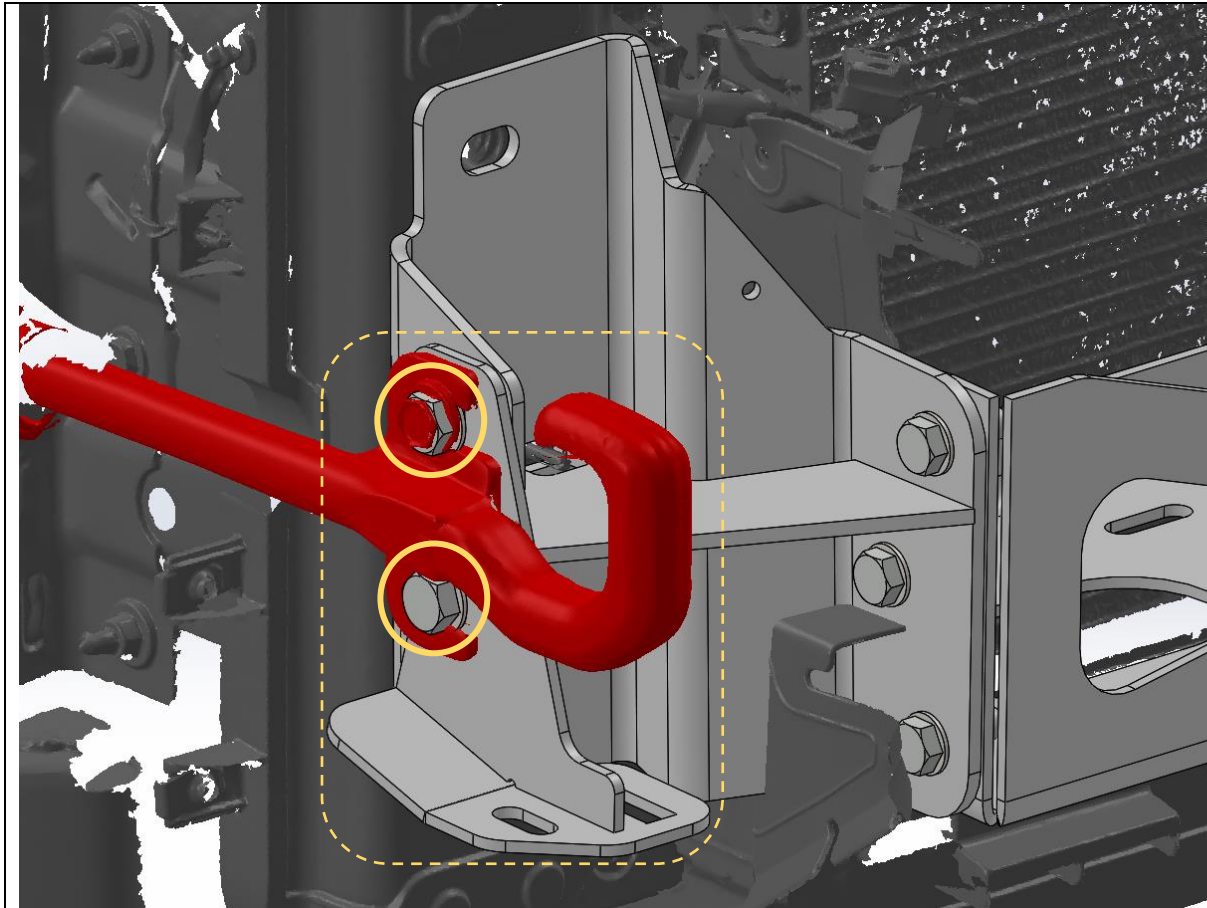
Install the chassis mount in between the genuine Jeep tow hook and impact beam, using the factory 16mm hex head bolts.

TOOLS REQUIRED

16mm socket/spanner

FASTENERS

4x 16mm hex head bolts



- b. Config 2 – With genuine Jeep tow hooks and Offroad Animal Hidden Winch Mount

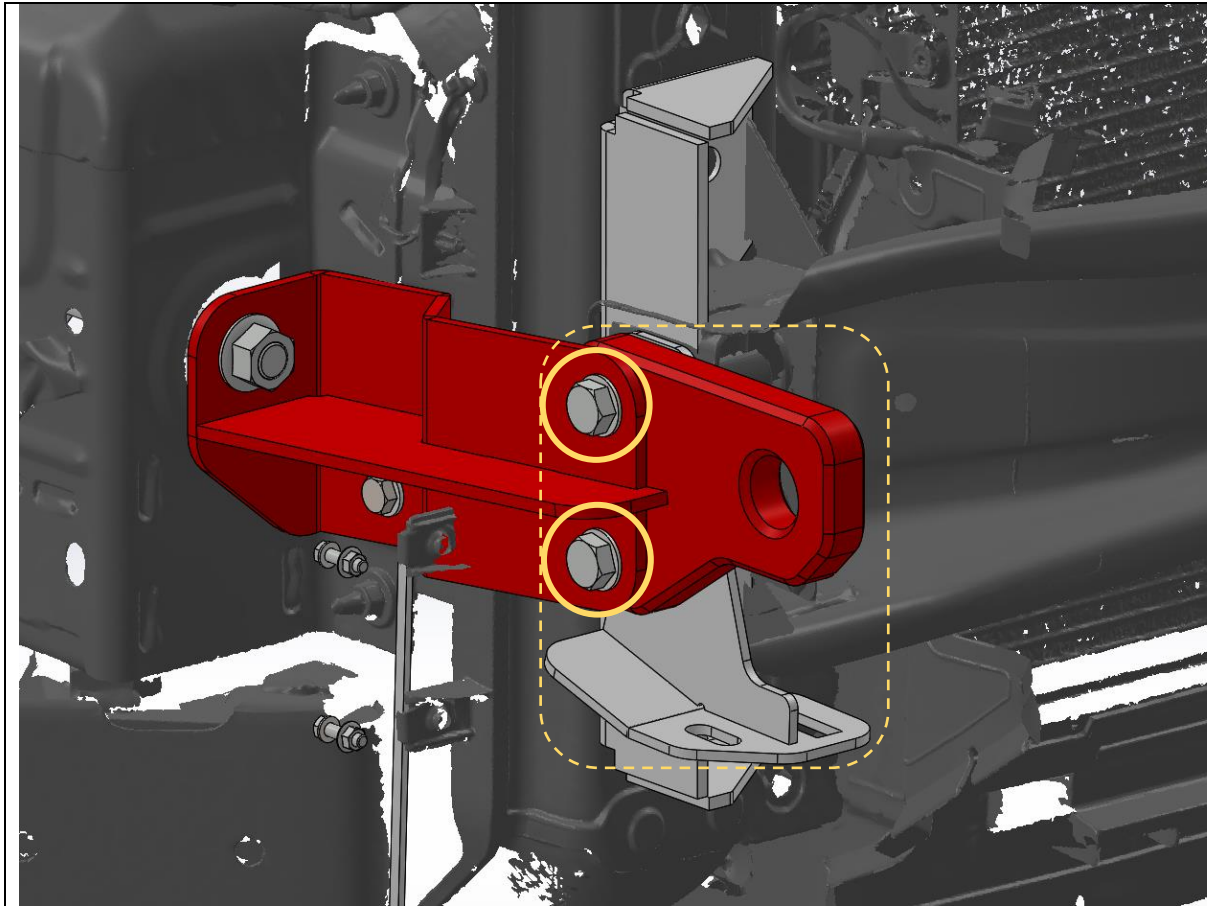
Install the chassis mount in between the genuine Jeep tow hook and hidden winch chassis mount, using 2x M12x30 hex head bolts, washers and flange nuts.

TOOLS REQUIRED

18/19mm spanner

FASTENERS

2x M12x30 hex head bolt
2x M12 flat washer
2x M12 flange nut



c. Config 3 – With Offroad Animal Recovery Points only

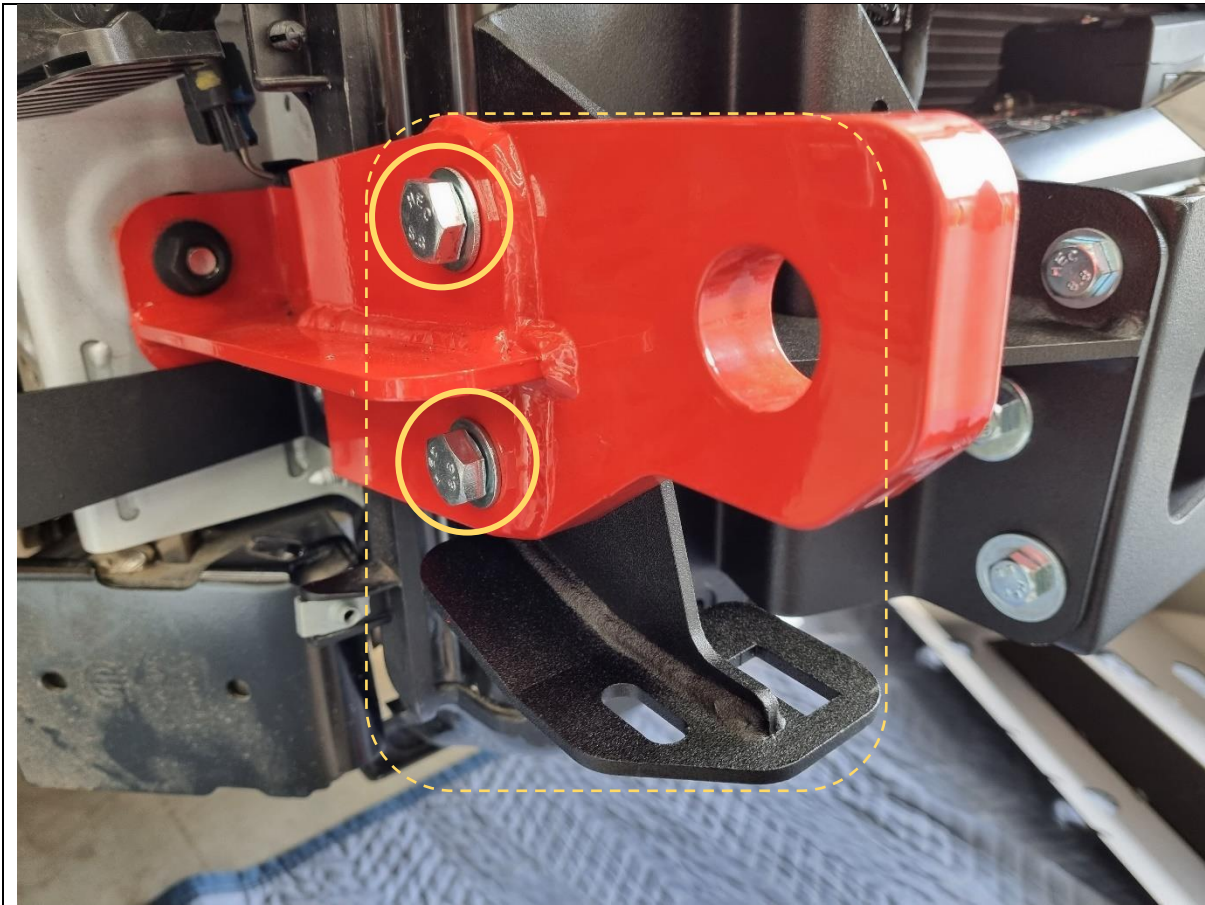
Install the chassis mount in between the Offroad Animal recovery point and support bracket, using 2x M12x55 hex head bolts, washers and flange nuts (supplied with Offroad Animal Recovery Point kit).

TOOLS REQUIRED

18/19mm spanner

FASTENERS

Supplied with Offroad Animal Recovery Points



- d. Config 4 – With Offroad Animal Recovery Points and Hidden Winch Mount

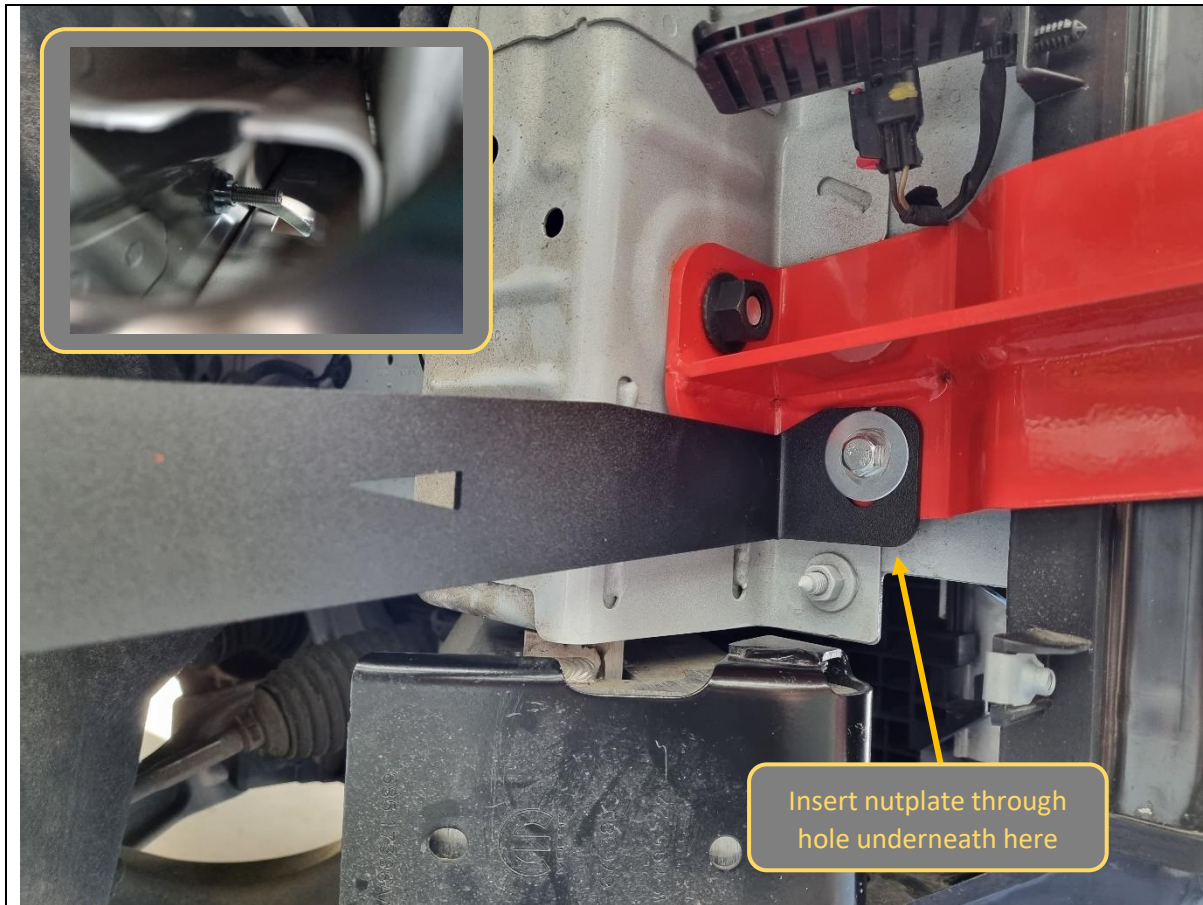
Install the chassis mount in between the Offroad Animal recovery point and hidden winch chassis mount, using 2x M12x55 hex head bolts, washers and flange nuts (supplied with Offroad Animal Recovery Point kit).

TOOLS REQUIRED

18/19mm spanner

FASTENERS

Supplied with Offroad Animal Recovery Points



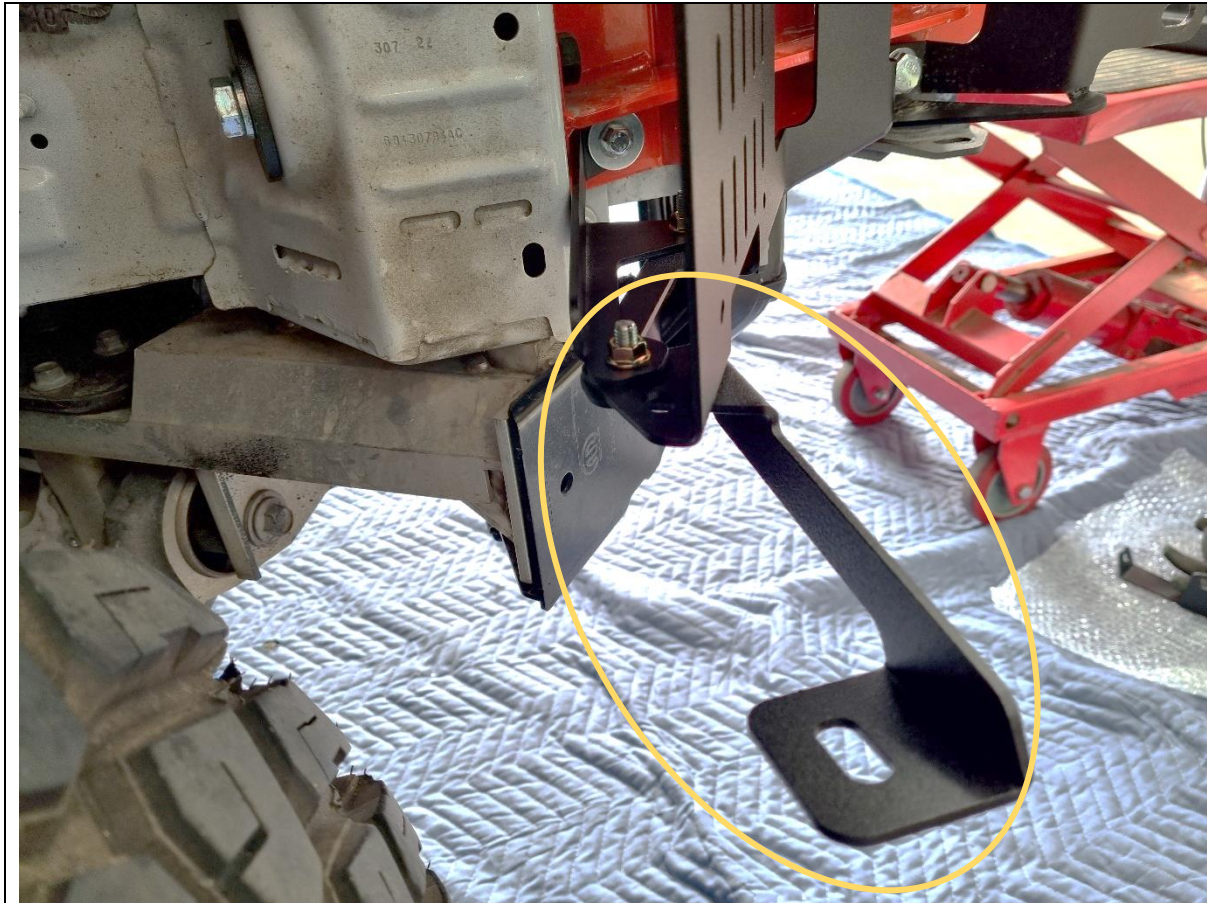
21. Loosely fit the wing brace bracket to the body with 1x M8 lollipop nutplate through the rectangular hole (see inset) and 1x M8x40 hex head bolt + large flat washer.
22. If fitting with Offroad Animal recovery points as shown above, re-use the fasteners that are already installed.

TOOLS REQUIRED

13mm socket/spanner

FASTENERS

1x M8x40 hex head bolt
1x M8 large flat washer
1x M8 lollipop nutplate



- 23. If the Offroad Animal Hidden Winch Mount is installed and the winch control box relocation bracket is fitted on one side, use the wing brace bracket supplied with the winch mount kit instead.
- 24. The bracket bolts to the underside of the outermost slot on the relocation bracket. Use fasteners supplied in the winch mount kit.

TOOLS REQUIRED

13mm socket/spanner

FASTENERS

Supplied with Offroad Animal Hidden Winch Mount



25. The bumper will need to be trimmed to fit around the pre runner mounts.
26. Separate the lower half of the bumper from the main section before trimming.
27. Undo the T20 Torx screw on either side of the bumper where the flare ended.
28. Unclip the 4x plastic push rivets holding the plastic inner support to the lower edge of the bumper.

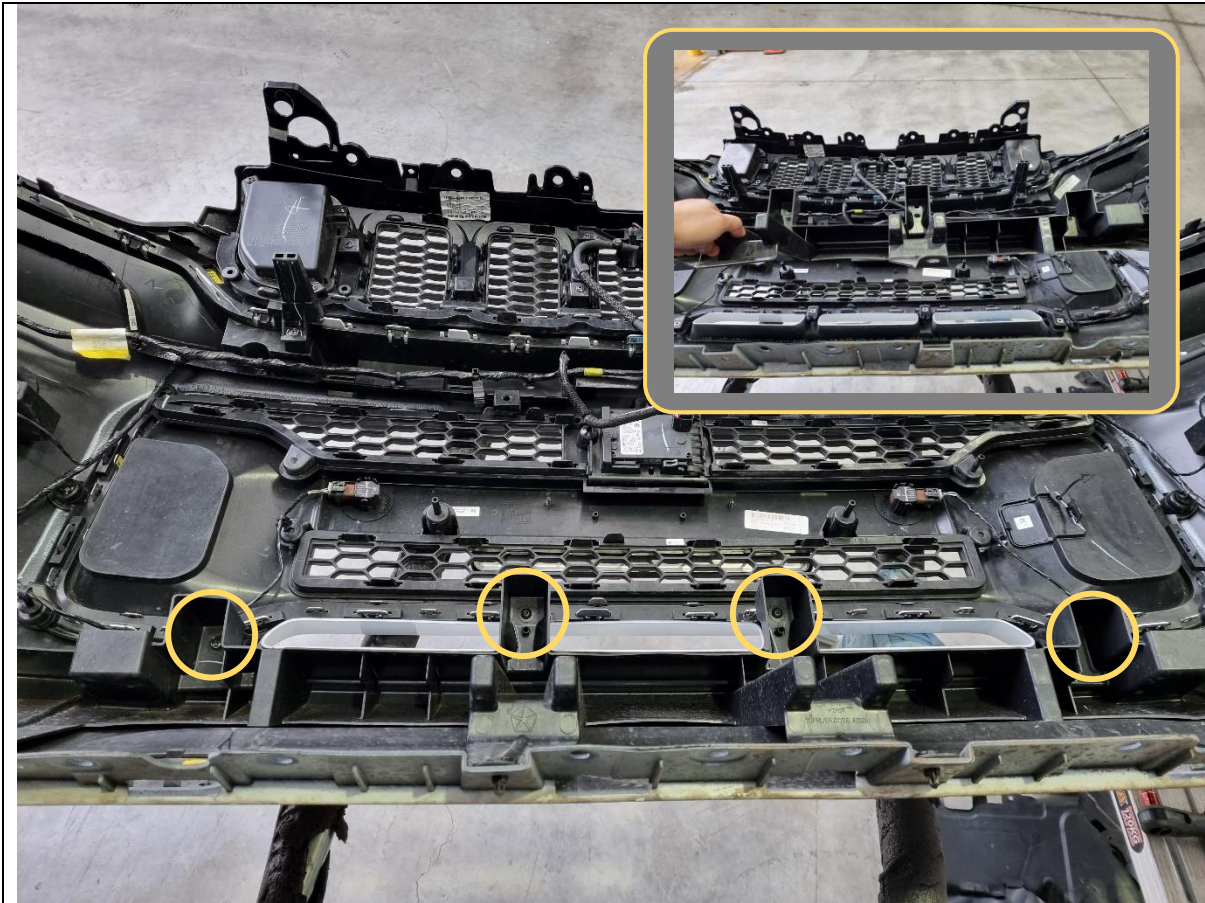
TOOLS REQUIRED

T20 Torx driver

Trim tool
or
Flat blade screwdriver

FASTENERS

2x T20 Torx screw
4x Plastic Push Rivets



- 29. Remove the 4x T20 Torx screws holding the plastic inner support to the bumper. Do not discard.
- 30. Remove the plastic inner support.

TOOLS REQUIRED

T20 Torx driver

FASTENERS

4x T20 Torx screws
Retain for reassembly



31. Unclip the lower half of the bumper from the main section.

There are multiple clips securing this lower half. Use a flat blade screwdriver to trim tool to carefully pry and release the clip tabs.

TOOLS REQUIRED

Trim tool
or
Flat blade screwdriver

FASTENERS



32. Unclip the wiring loom from the locations shown and tuck the loom up and out of the way.

TOOLS REQUIRED

Trim tool
or
Flat head screwdriver

FASTENERS



- 33. From the outside, mark out the area where material will be removed.
- 34. Begin by marking out 2 vertical lines 120mm apart and aligned to the edge of the tab as shown above.
- 35. Mark out the horizontal line at the top in line edge of the infill area (see inset).

TOOLS REQUIRED

Marker pen
or
Masking tape

FASTENERS



- 36. Ensure any wiring looms are safely out of the way before trimming.
- 37. Using an air hacksaw or other cutting tool, cut out the area previously marked.
- 38. Also perform any bumper cuts required for fitting recovery points, hidden winch or nudge bar at this stage.

TOOLS REQUIRED

Air hacksaw or similar

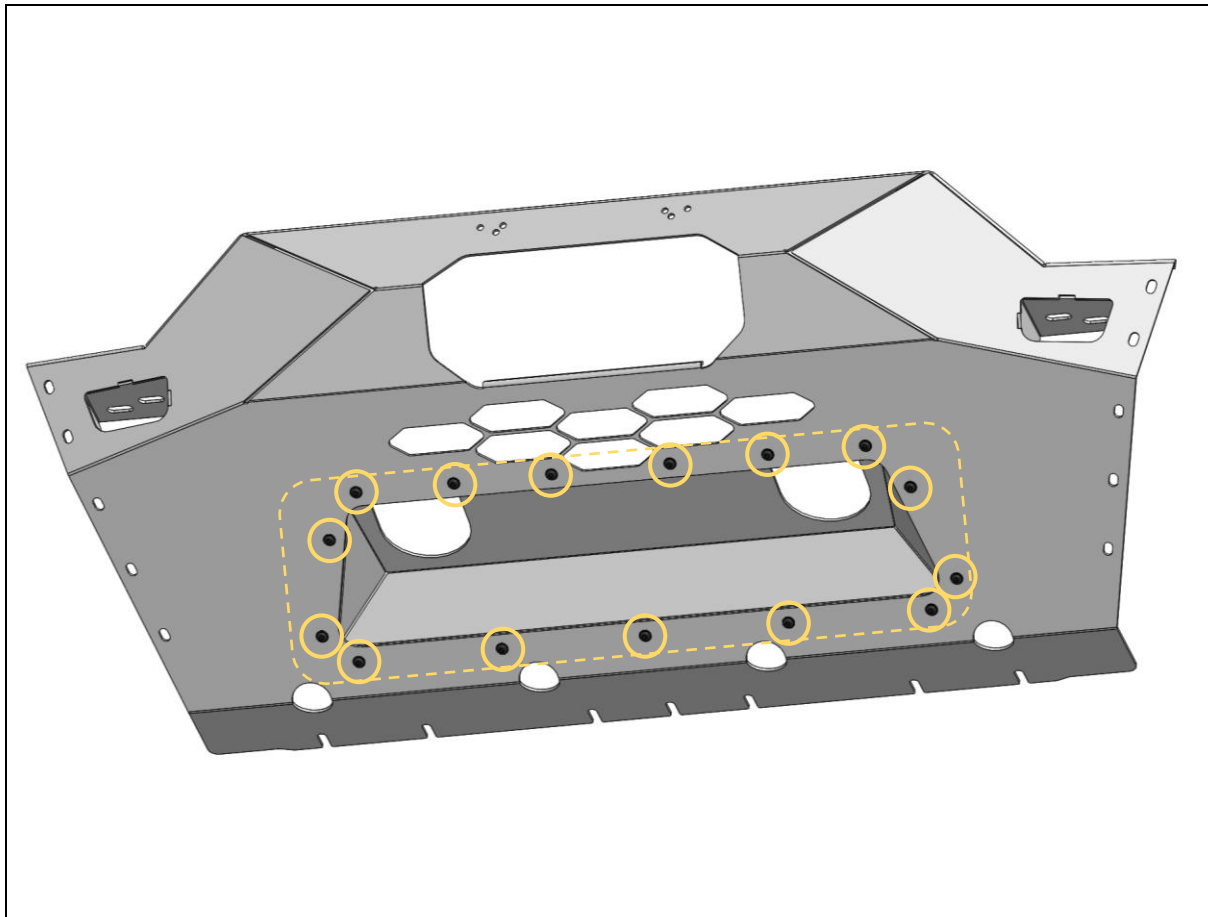
FASTENERS



39. Fit the bumper back onto the vehicle. Reconnect all looms and washer hose lines.

TOOLS REQUIRED

FASTENERS



40. Fit the centre reinforcement to the pre runner centre plate using 15x M6x16 black button head bolts, black flat washers and flange nuts.

TOOLS REQUIRED

4mm hex/Allen key
10mm socket/spanner

FASTENERS

15x M6x16 black button head
15x M6 black washer
15x M6 flange nut



41. Fit the supplied lengths of pinch weld to the top flanges of the centre plate and both wings.

TOOLS REQUIRED

FASTENERS



42. Install 1x M8 cage nut in the rectangular slot on the mount.
Repeat for other side.

Hint: Use a small flat bladed screwdriver to push the edge of the cage to engage with the slot to aid fitting.

43. Also install 5x M8 cage nuts to the inside of each wing (see inset).

TOOLS REQUIRED

Flat blade screwdriver

FASTENERS

12x M8 cage nut



44. Hold the centre plate up to the vehicle.

TOOLS REQUIRED

FASTENERS



45. Loosely secure the top of the plate to the mount bracket using 1x M8x25 hex bolt and washer, and 1x M10x20 hex bolt, flat washer and flange nut. Repeat for other side.

TOOLS REQUIRED

13mm spanner
16mm spanner

FASTENERS

2x M8x25 hex bolt
2x M8 flat washer

2x M10x20 hex bolt
2x M10 flat washer
2x M10 flange nut



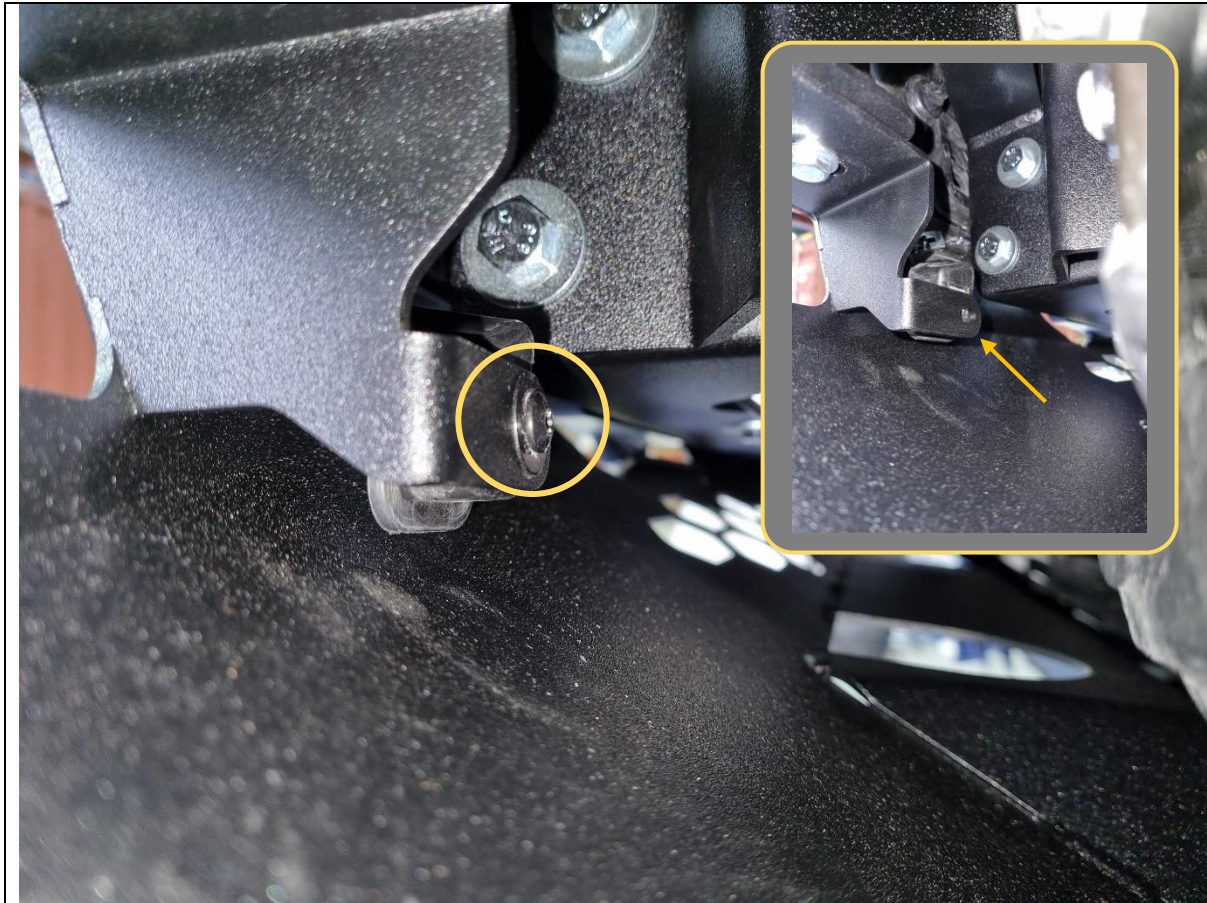
46. Loosely secure the bottom of the plate with 7x 10mm hex bolts retained from Step 6.

TOOLS REQUIRED

10mm socket/spanner

FASTENERS

7x 10mm hex bolt



47. Secure the bumper to the centre plate by re-using the T20 torx screw from Step 29. Gain access from the opening on the side. Repeat for other side.

TOOLS REQUIRED

T20 Torx driver

FASTENERS

2x T20 Torx screw



- 48. Fit the wing to the vehicle. The tabs on the wing slide in behind the centre plate.
- 49. Loosely secure the wing to the centre plate with 5x M8x20 black button bolts and flat washers.
- 50. Loosely secure the wing to the wing brace with 1x M10x25 button head bolt, flat washer and flange nut. Access the flange nut from the side in between the wing and inner wheel guard (if not fully removed).
- 51. Repeat on other side.

TOOLS REQUIRED

- 5mm hex/Allen key
- 6mm hex/Allen key

FASTENERS

- 10x M8x20 black button head
- 10x M8 black flat washer
- 2x M10x25 button head
- 2x M10 flat washer



52. Adjust and align the pre runner so that it is centred on the vehicle and lines up just underneath the edge of the flares on the sides. There should be a 3-5mm gap to the bumper everywhere.

53. Once happy with alignment, tighten all bolts on the outside and for the mounts on the inside. Access the inside from the back where the inner wheel guard would be.

TOOLS REQUIRED

5mm hex/Allen key
6mm hex/Allen key

10mm socket/spanner
13mm socket/spanner
16mm socket/spanner
18/19mm socket spanner

FASTENERS



- 54. Refit the inner wheel guard to the vehicle.
- 55. Using a utility knife, cut the inner wheel guard approximately 5mm below the edge of the wing, then tuck it inside behind the back flange of the wing.

TOOLS REQUIRED

Utility knife

FASTENERS



56. Fit the number plate onto the vehicle. You can either fit the number plate back on the original mounting location on the number, or to the holes on the centre plate of the Pre Runner.

You can also choose to fit with the number plate flip bracket if you have a winch installed and need to get access to the fairlead.

TOOLS REQUIRED

FASTENERS



57. Last but not least, don't forget to fit the Offroad Animal logo plate in the location shown.

TOOLS REQUIRED

FASTENERS



Congratulations! You're done! Go overlanding and enjoy your newly protected Grand Cherokee.

Why not complete the tough look of the Grand Cherokee with the Offroad Animal Nudge Bar and Hidden Winch Mount?