



FORD RANGER Next Gen

2022 MY ONWARDS

REAR BAR

IMPORTANT! – READ BEFORE INSTALLATION

- When installed in accordance with these instructions, the rear protection tow bar maintains the factory tow rating of your vehicle.
- This product must be installed exactly as per these instructions using only hardware supplied.
- Take a few moments to read instructions thoroughly before beginning work.
- In the event of damage to any bar component please contact OFFROAD ANIMAL to arrange repair/replacement of components.
- Do not use this product for any vehicle make or model other than that specified on these instructions.
- Do not remove labels from this product.
- This product and its fixings must not be modified in any way unless stated in these fitting instructions.
- The installation of this product is recommended for trained personnel.
- These instructions are correct at time of publication. OFFROAD ANIMAL cannot be held responsible for the impact of any changes subsequently made by the vehicle manufacturer. If you find something has changed please contact us to let us know!
- During installation it is the duty of the installer to check correct operation/clearances of all components.
- If Instructions are to be printed for reference in the workshop, it is recommended that they are printed in colour, for best legibility.

PARTS LISTING

IMPORTANT: Check all parts are present before beginning work! Contact OFFROAD ANIMAL if something is missing.

Main Parts – In the Box

| Qty | Part Number | Description | Image |
|----------|-------------------|--|---|
| 1 | RB-FRA-NG-22-ASM1 | Ranger Next Gen Rear Bar Weldment |  |
| 2 | RB-FRA-NG-22-ASM2 | Next Gen Ranger Rear Bar - Light Cover Plate Assy |  |
| 1 | B-0927R | Ranger Next Gen Rear Bar Wing Brace |  |
| 1 | B-0927L | Ranger Next Gen Rear Bar Wing Brace |  |
| 2 | F-0012 | Ford Ranger Next Gen Sensor Holder - 15 Deg Horizontal |  |
| 4 | F-0016 | Ford Ranger Next Gen Sensor Holder - 18 Deg Horizontal |  |
| 2 | BR25B | LED NUMBER PLATE LIGHT |  |
| 2 | CPHP020 | Plastic Hole Insert, 28MM, Black, Tigerlink Hardware CPHP020 |  |

Small Parts – Contained in Small Parts Kit Bag

| Qty | Part Number | Description |
|-----------|-----------------|--|
| 14 | M10 FLANGE NUT | Flange Nut, M10x1.5 G8.8 ZP |
| 10 | M10 x 30 | Bolt Hex, M10X30x[1.5], GR8.8 ZP |
| 12 | M10 Flat Washer | M10 FW |
| 4 | M10X20 BHCS | SCREW, BUTTON HEAD CAP, M10X20X1.5 GR12.9 ZP |
| 2 | M12 FLANGE NUT | Flange Nut, M12x1.75 G8.8 ZP |
| 4 | M8 FLANGE NUT | Flange Nut, M8x1.25 G8.8 ZP |
| 6 | M10 FW LHD | WASHER, FLAT M10X28.5X2.5 |
| 4 | M5 Flat washer | M5 FW |
| 4 | M5X15 PAN | SCREW, PAN HEAD PHILLIPS, M5X15X0.8 GR4.6 ZP |
| 4 | M5 FLANGE NUT | Flange Nut, M5x0.8 G8.8 ZP |

TOOLS REQUIRED

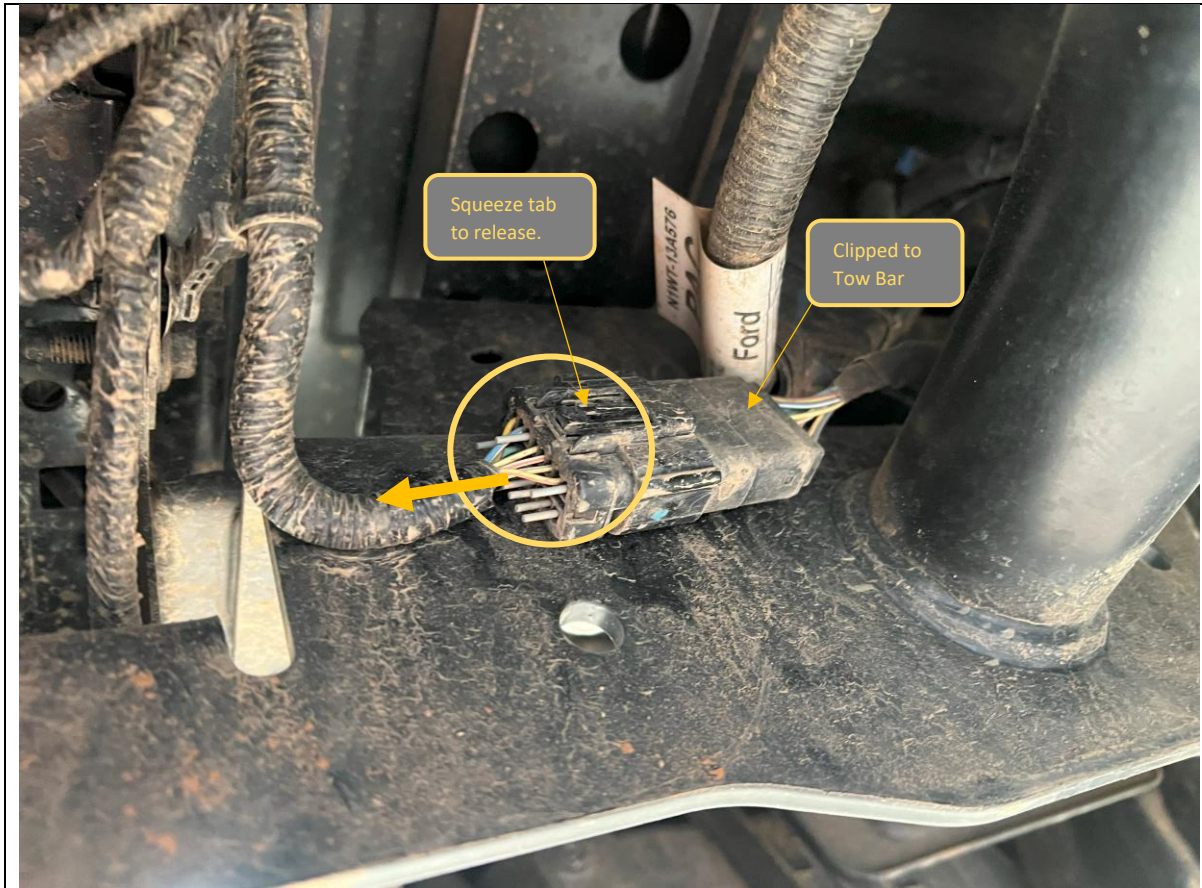
The following tools will be required to install the product.

| Hand Tools | Power Tools | Workshop Equipment |
|--|---|--|
| Metric Socket Set 8-19mm Metric Spanner Set 8-19mm Hex (Allen) Key Set 4-8mm Trim Tool Utility Knife Side Cutters Wire Strippers | Soldering Iron Heat Gun Electric / Air Impact Driver (Optional but speeds up fitting process) | Lift Trolley Solder Heat Shrink Isopropyl Alcohol Clean Rag/Shop Towel |

WORKSHOP SAFETY

It is the responsibility of the installer to always complete works in a safe manner. Make sure the following safety equipment is available and precautions are observed whilst fitting this product.

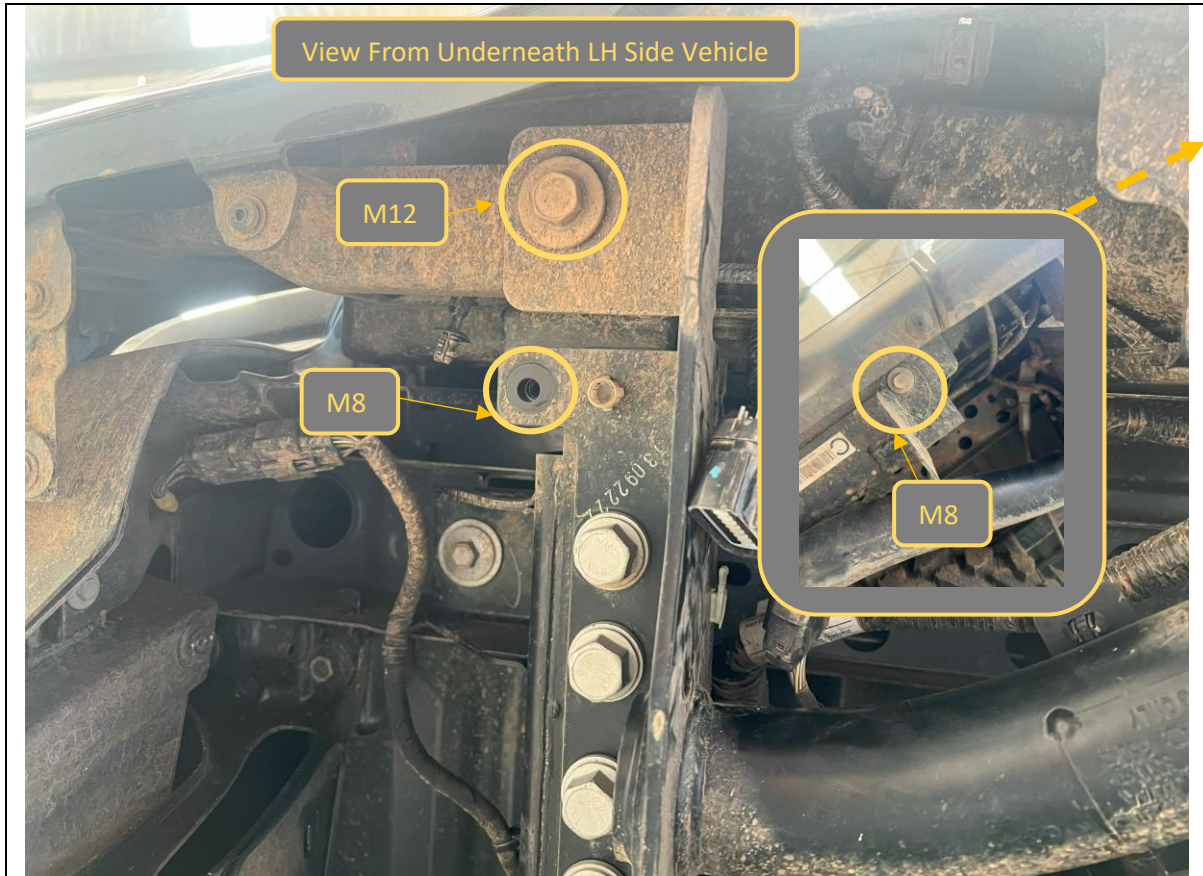
| | |
|---|--|
| <p>Hearing Protection</p>  | <p>Always wear ear protection when using power tools.</p> |
| <p>Eye Protection</p>  | <p>Ensure eye protection is always worn when cutting or drilling.</p> |
| <p>Manual Handling</p>  | <p>Do not attempt to lift bar assemblies or rock sliders on your own.</p> <p>Always use two people to lift or use mechanical Lifting aid such as hydraulic lifting trolley.</p> |
| <p>Vehicle Support</p>  | <p>Always ensure vehicle is properly supported when working on it. Do not attempt to fit products whilst suspension work is being carried out. Do not work under a vehicle supported only by a jack.</p> |



1. This bar is designed to suit vehicles fitted with the **Ford genuine tow bar only**. This is standard fitment on most model grades.
2. On the underside of the vehicle on the LH side towbar upright locate the rear bar wiring harness. Disconnect by depressing the tab on the connector and separating.

TOOLS REQUIRED

FASTENERS



3. Remove the 2x M8 and 1x M12 flange head bolt per side securing the bumper to the tow bar.
4. Remove bolts on both sides of vehicle
5. Retain the bolts for re-use.

TOOLS REQUIRED
18mm Socket,
13mm Socket
Extension bar

FASTENERS
1x M12 Flange head bolts
2x M8 Flange head bolts

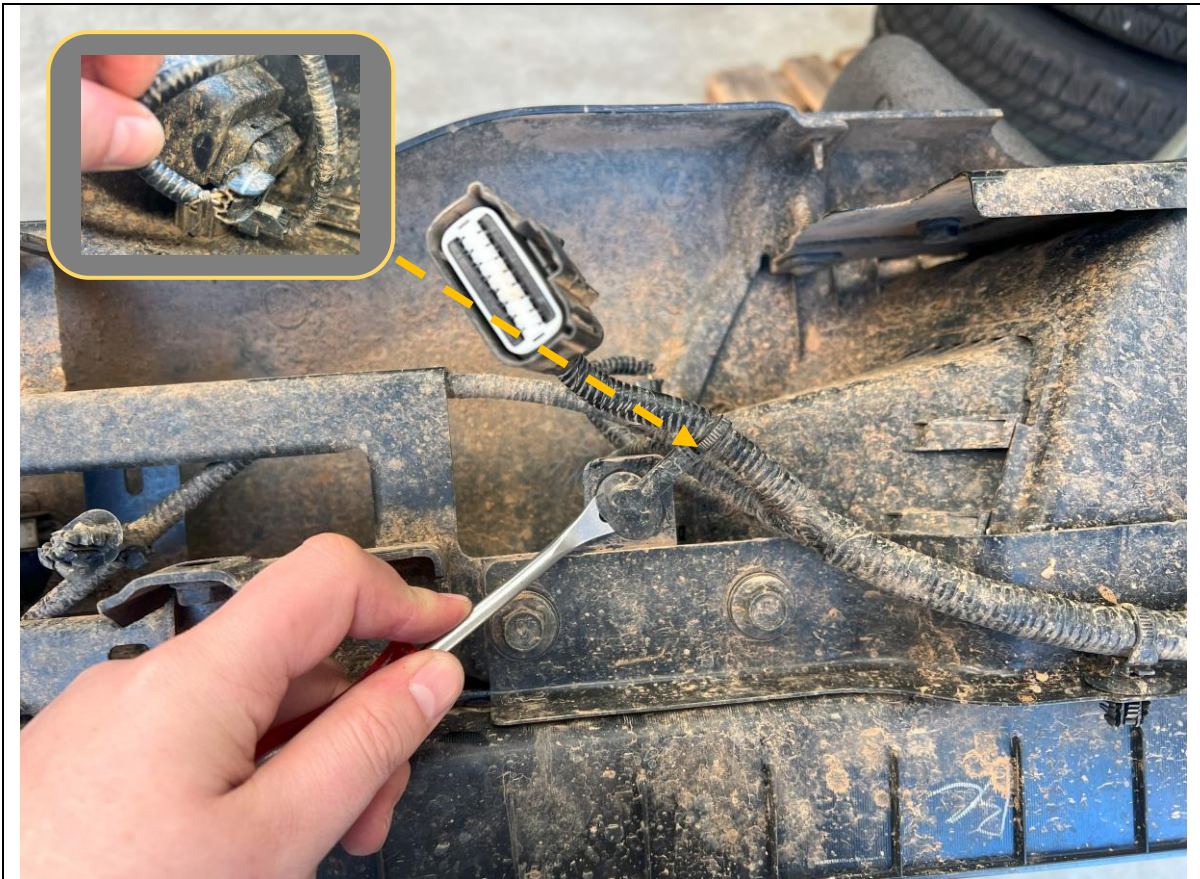
PER SIDE
Retain



6. With all fasteners removed and the factory bumper assembly free, remove the bumper from the vehicle in a rearward direction

TOOLS REQUIRED

FASTENERS




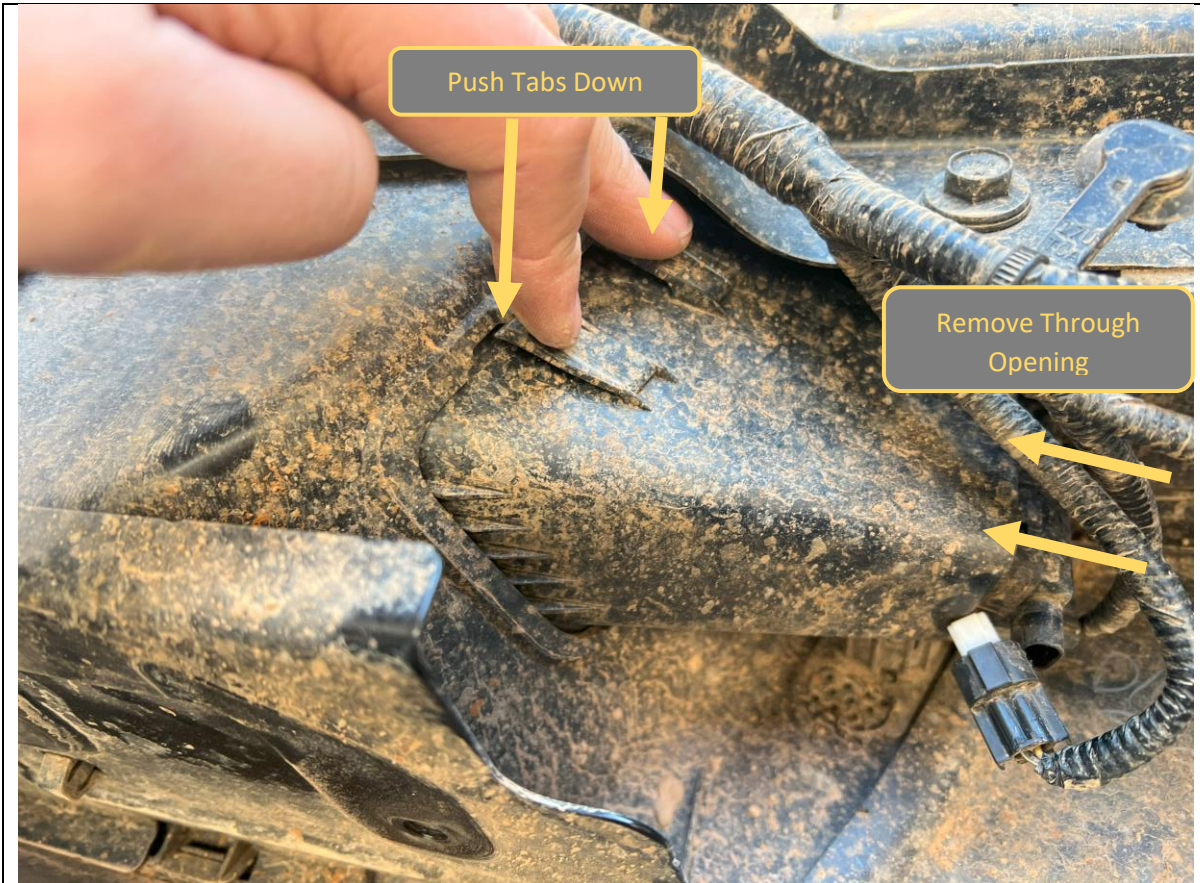
7. Disconnect the Number plate lamp connectors.
8. Release the Rear bar wiring harness, by releasing all the clips securing it to the factory bar with a trim tool.

TOOLS REQUIRED

Trim Tool

FASTENERS

| | |
|---|------------------------------|
|  <p data-bbox="933 212 1316 313">Push Sensor through from outside of bumper</p> | |
| <p>9. Remove parking sensors from housings, by Prying open the retaining tabs, whilst pushing the sensor through the housing from the outside of the bumper</p> <p>10. Repeat for all sensors in the bumper. Leave looms connected at this stage.</p> | <p>TOOLS REQUIRED</p> |
| | <p>FASTENERS</p> |



11. Remove the number plate lamps to gain access to remove the parking sensors and loom.
12. Push down on the two retaining tabs to release lamp then remove through the bumper opening towards the center of the bumper.
13. Remove the rear bar loom, including attached parking sensors from the rear bumper.

TOOLS REQUIRED

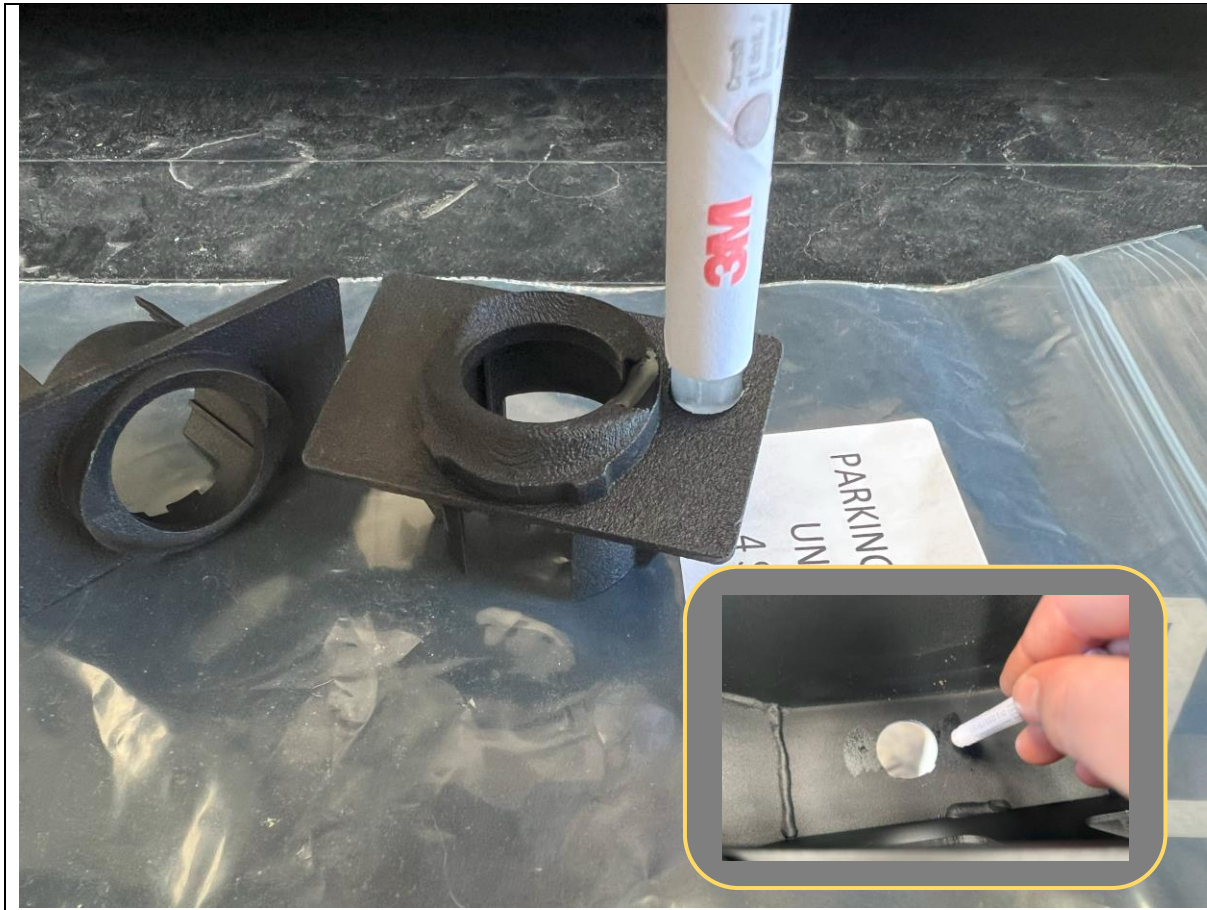
FASTENERS



14. Clean areas adjacent to parking sensor locations on inside of bar with isopropyl alcohol.

TOOLS REQUIRED
Isopropyl Alcohol
Rag

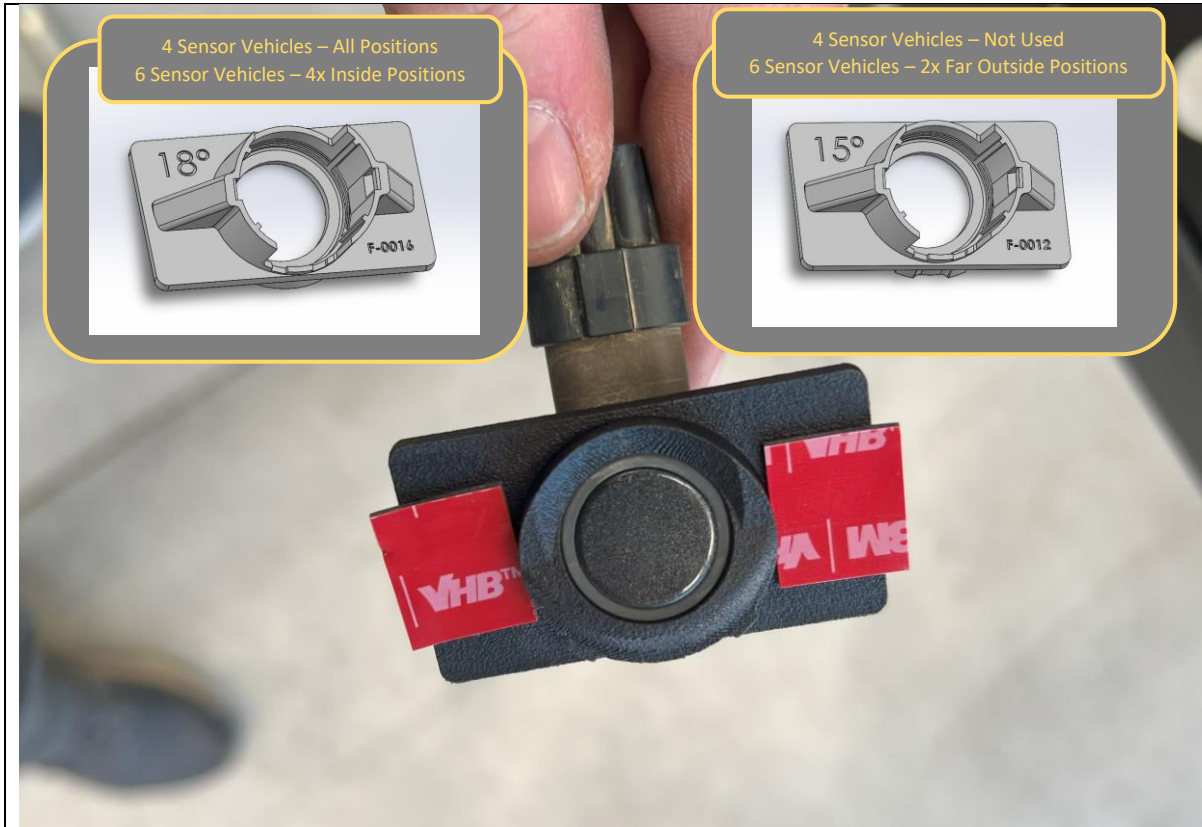
FASTENERS



15. Activate the ampoule of adhesion promotor in the parking sensor tape kit by crushing tube in location indicated.
16. Apply adhesion promotor to sensor housing mounting faces, and bond areas of the bar adjacent to the sensor holes in the bar.

TOOLS REQUIRED

FASTENERS



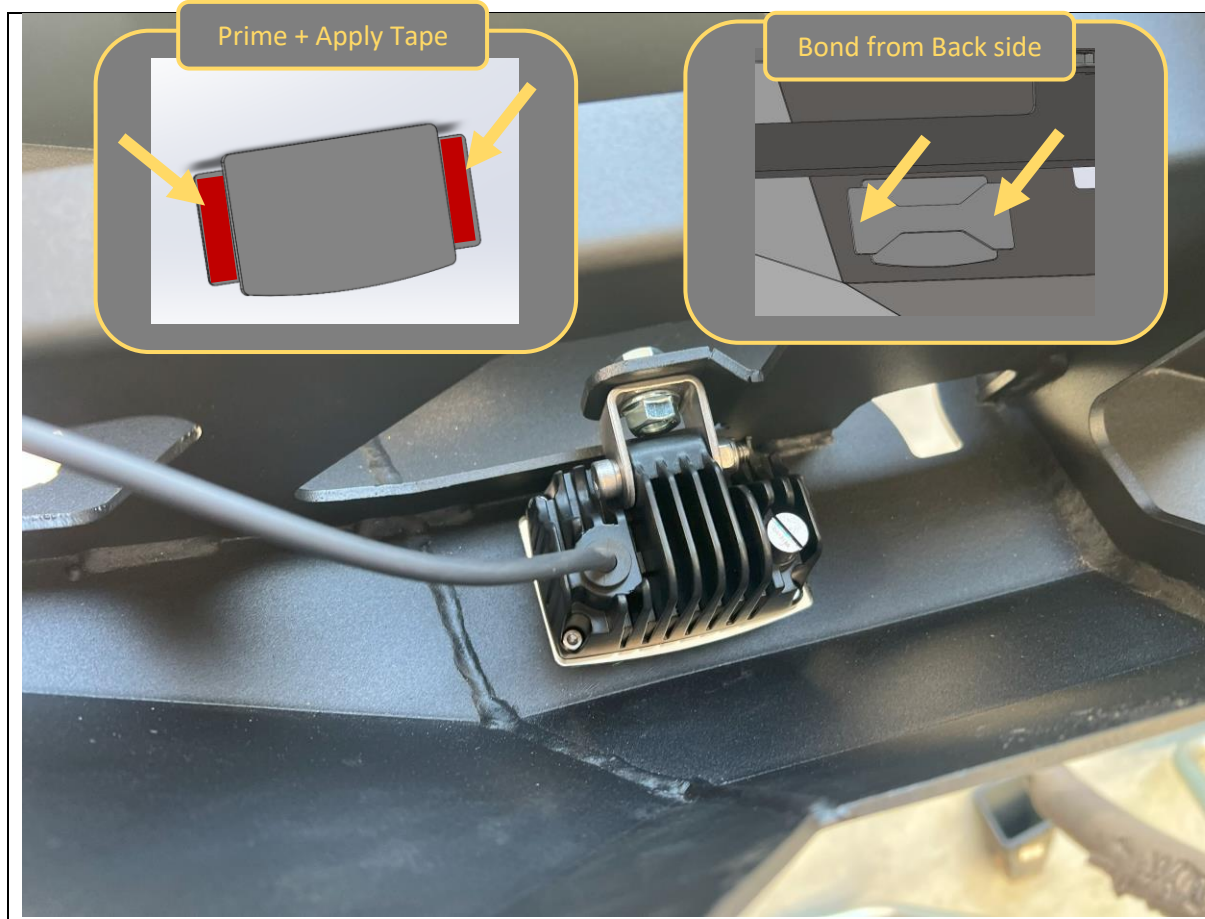
| | |
|--|--|
| <p>17. Determine correct sensor housings for each sensor location. For 4x Sensor equipped models use only 18deg housings. For 6x Sensor equipped models use 15 deg housing on far outer sensors and 18 deg housings on all others.</p> | <p>TOOLS REQUIRED Isopropyl Alcohol Rag</p> |
| <p>18. Sensor housings are keyed to prevent fitting in wrong location</p> <p>19. Apply 3M Tape pads to all sensor mounting tabs on the sensor housings.</p> <p>20. Re-fit parking sensors into new housings, ensure sensors are inserted square and there is no distortion to the rubber isolation ring.</p> | <p>FASTENERS</p> |



21. Route the loom through the new bar. Disconnect sensors as required to pass wiring through smaller openings.
22. Ensure main plug is adjacent to the LHS side arm.
23. With sensor plugs connected, remove tape backing and adhere sensors, in housings to the bar. Apply pressure for 20-30 seconds to ensure strong adhesion of tape.
24. If car is equipped with 4x sensors fit blanking plug to far outside sensor holes.

TOOLS REQUIRED

FASTENERS



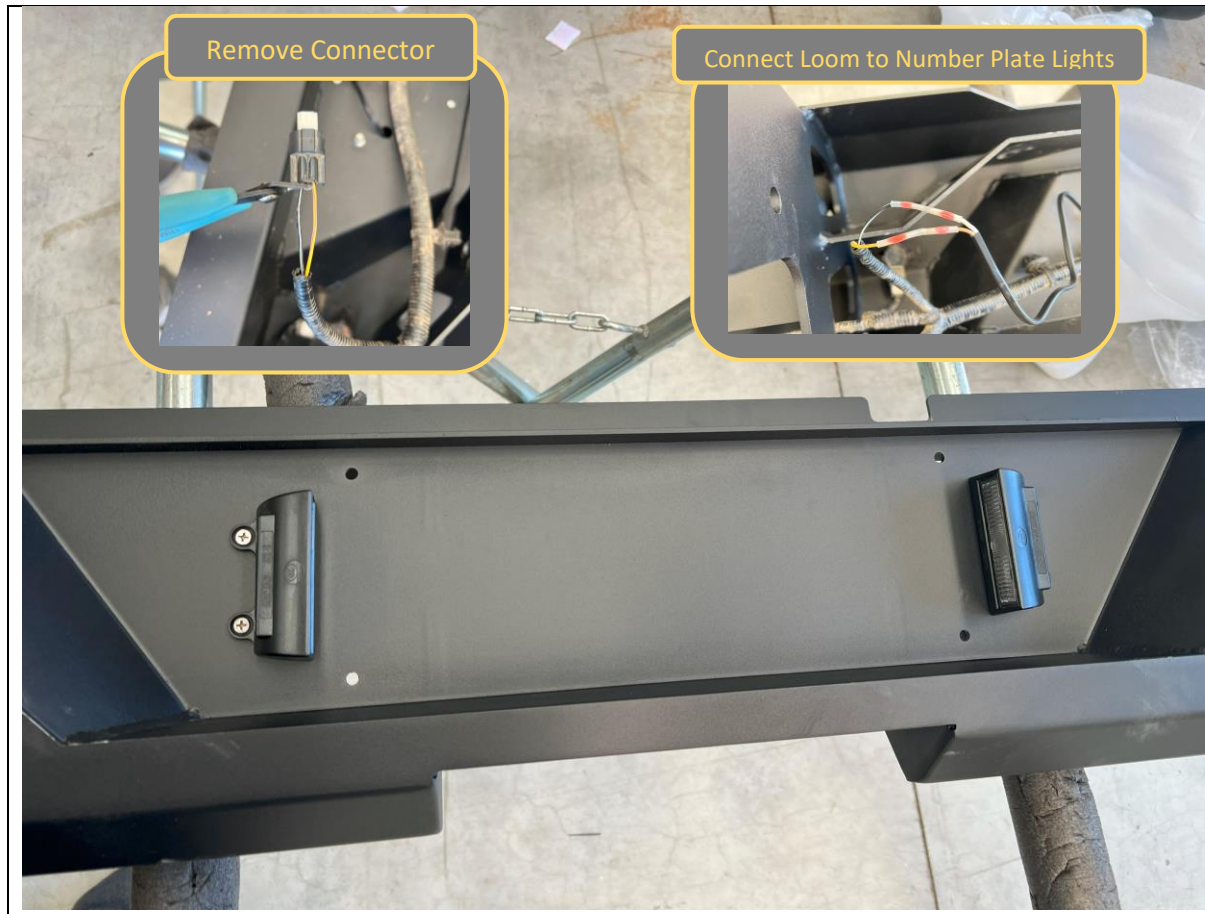
- 25. If optional, install rear auxiliary lights to the rear light mounting tabs. Use the fasteners supplied with the auxiliary rear light kit.
- 26. If not fitting auxiliary lights fit the cover plates using 3M tape, using same clean -> prime -> bond process as parking sensors.

TOOLS REQUIRED

13mm Spanner
Or
Isopropyl Alcohol
Rag

FASTENERS

M8 Supplied with Lights



27. Fit the number plate lights to the bar using the supplied Phillips head screws and nuts.
28. Strip back the corrugated tubing on the number plate lamp connectors on the loom to expose wiring.
29. Cut off factory number plate light connector.
30. Strip wiring and connect lights to factory Loom:
White -> Black = GND
Yellow -> Brown = +12V Number Plate Lamp.
31. We like to use self-soldering heat shrink for this; however, any insulated auto electrical joint type is suitable (crimps, soldering etc.)
32. Complete for both number plate lamps.

TOOLS REQUIRED

- Side Cutters
- Wire Strippers
- Heat Gun
- Or
- Soldering Iron
- Or
- Crimping Tool
- Phillips Head Screwdriver

FASTENERS

- Electrical Connectors
- Phillips head screws supplied with lights



33. Re-Fit number plate to the bar, using supplied M5 Fasteners.

TOOLS REQUIRED
Phillips Head Screwdriver

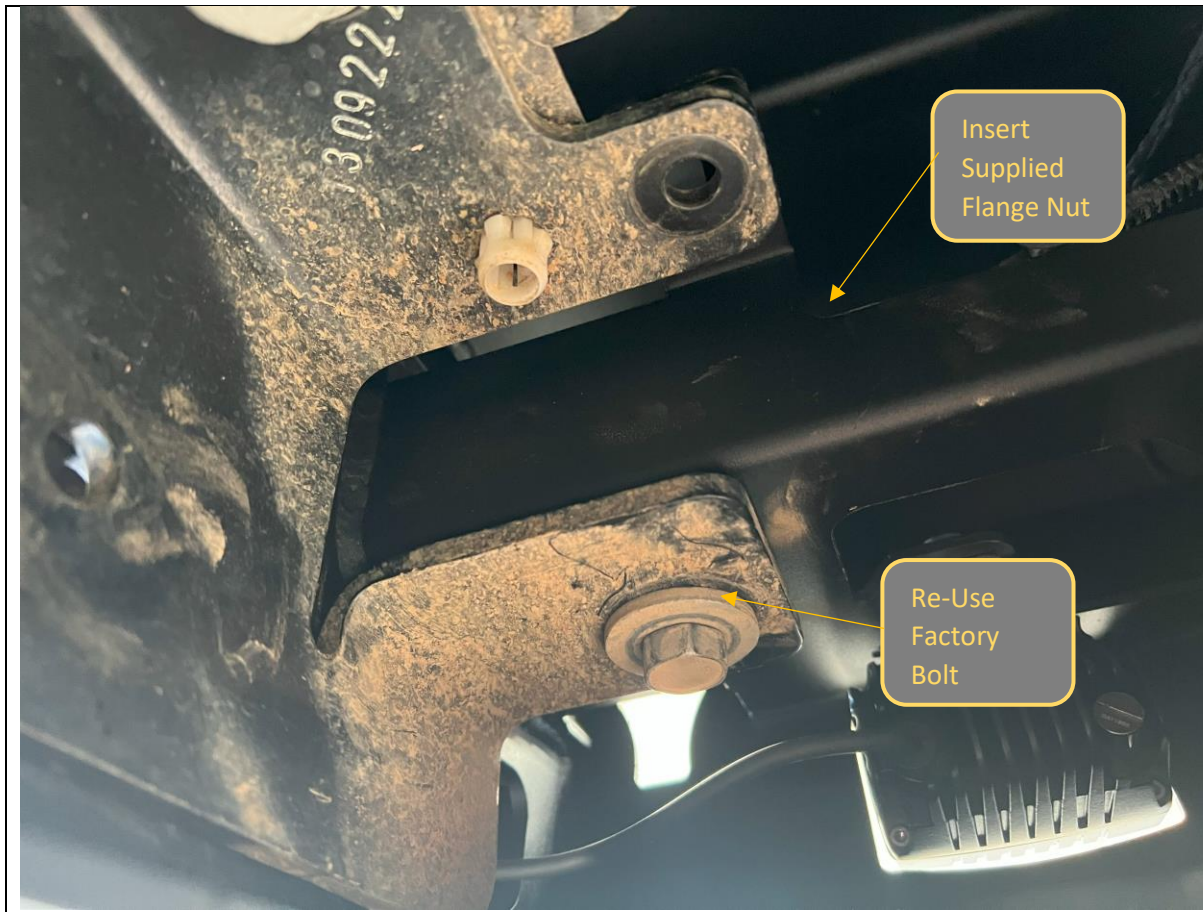
FASTENERS
4x M5 Pan Head Screws
4x M5 Flat Washer
4x M5 Flange Nut



34. With assistance, from a lift trolley or another person, lift the rear bar onto the car. The rear bar needs to sit **ON TOP** of the mounting flanges on the Tow bar.
35. Rear bar side arms need to sit **INSIDE** of the towbar side arms.

TOOLS REQUIRED

FASTENERS



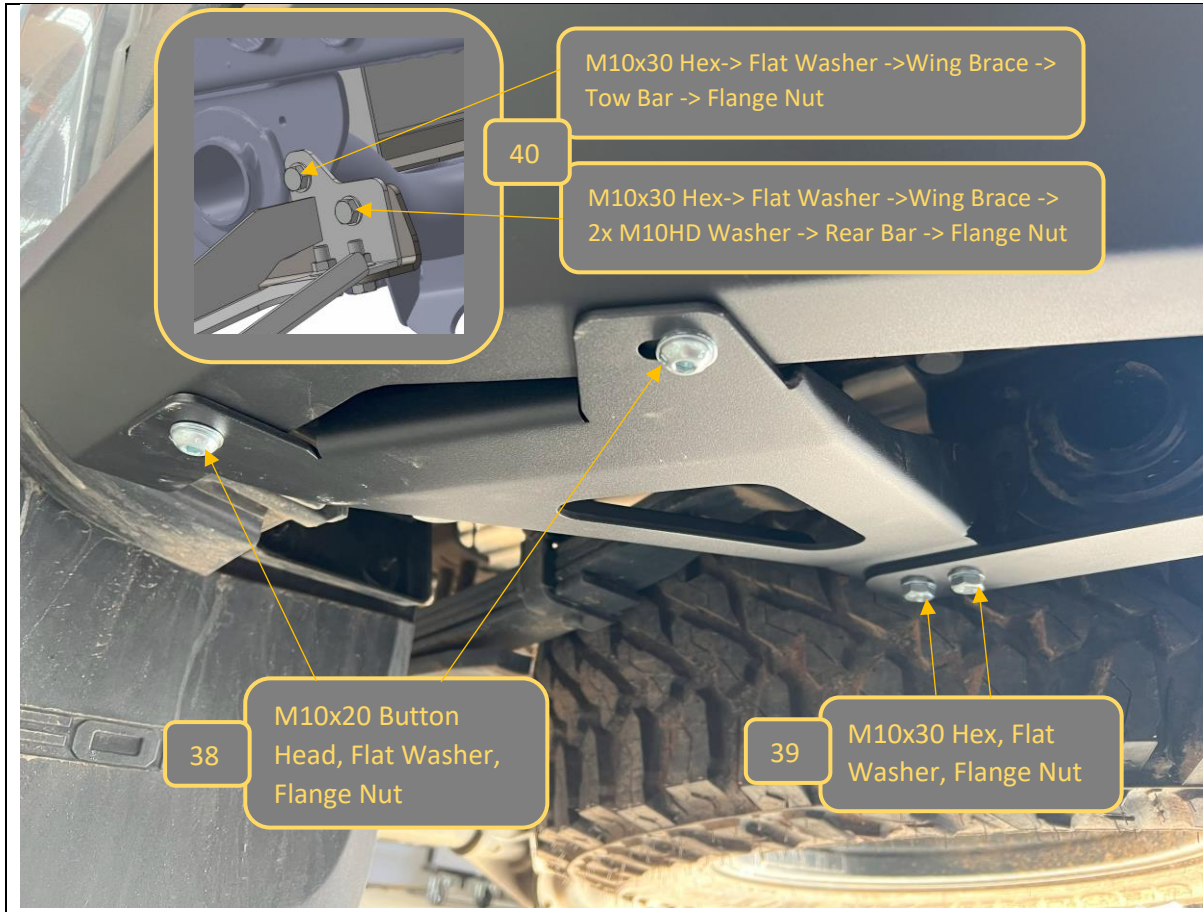
- 36. Secure bar to tow bar mounting flanges using OE M12 and M8 Flange bolts removed earlier, into supplied M8 and M12 Flange Nuts.
- 37. Once all fasteners are in place and the bar is square on vehicle, tighten all fasteners.

TOOLS REQUIRED
18mm Socket
13mm Socket

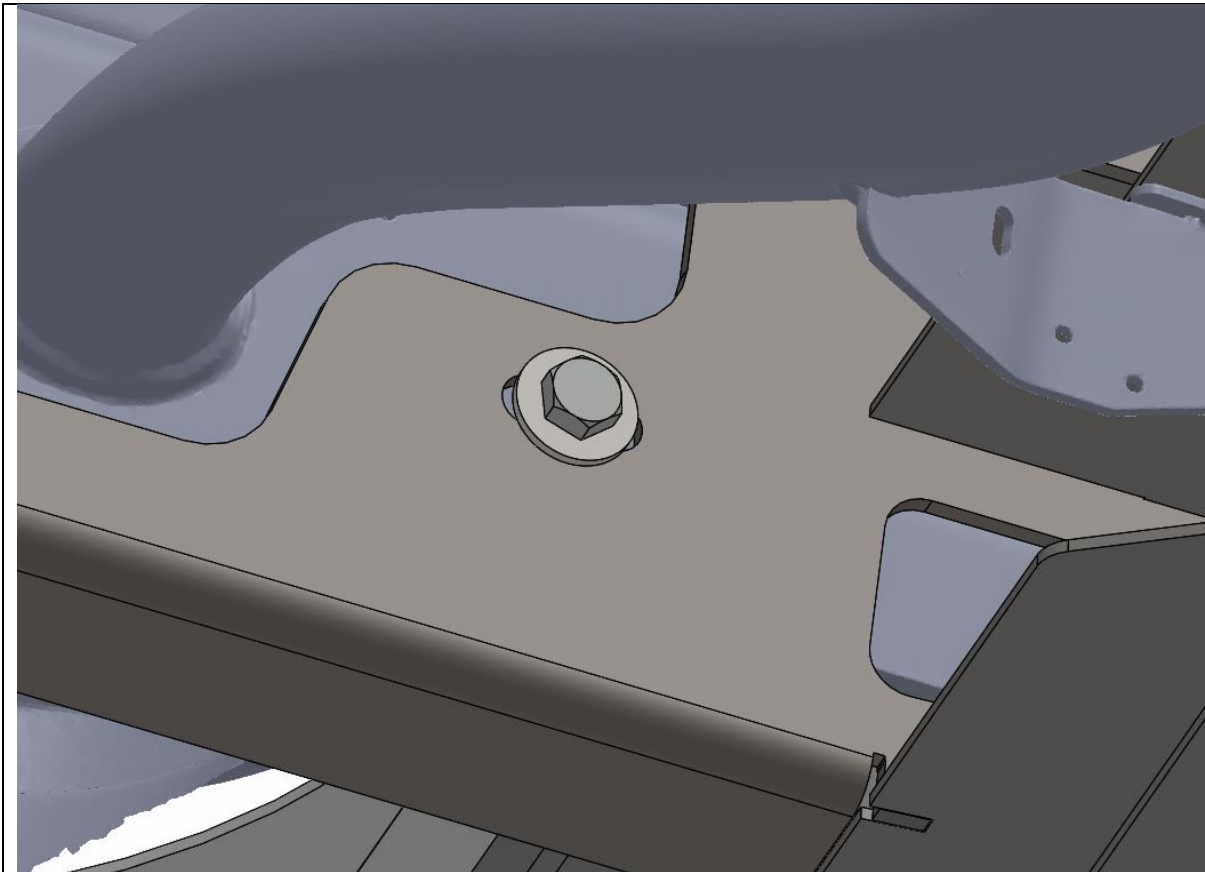
FASTENERS
1x M12 Flange Nut
2x M8 Flange Nut

Re-Use Factory Bolts

per side



| | |
|---|--|
| <p>38. Fit the wing brace, first to the wing, using 2x M10x20 Button Head, Flat washer, and Flange nuts.</p> | <p>TOOLS REQUIRED 16mm Socket 6MM Hex Key</p> |
| <p>39. Fit the wing brace to the side arm of bar using 2x M10x30 Hex Bolts, Flat washer, and Flange nuts.</p> | <p>FASTENERS Ref Image Notes</p> |
| <p>40. Connect the horizontal facing M10x30 Hex bolts through the side arm, tow bar and wing brace in the order shown in the inset caption above, from outside to inside.</p> <p>41. Complete for other side of vehicle. Once all complete tighten all fasteners.</p> | <p>per side</p> |



- 42. Fit the forward side arm mount bolt. Complete on both sides
- 43. Complete any wiring for the auxiliary lights (if equipped) These can be wired in several configurations depending on customer requirements.
- 44. Reconnect the main electrical harness connector on LH side arm.

TOOLS REQUIRED
16mm Socket / Spanner

FASTENERS
1x M10X30 Hex
1x M10 Large HD Washer
1x M10 Flange Nut



| | |
|---|------------------------------|
| <p>45. Attach Offroad Animal Logo plate to chamfered face, using attached adhesive backing.</p> <p>46. Double check all fasteners are tight.</p> <p>47. With that you are done!</p> | <p>TOOLS REQUIRED</p> |
| | <p>FASTENERS</p> |



Congratulations!
Head for the tracks and enjoy your newly protected Ford Ranger!