

Ford Ranger / Everest Next Gen

MY2022 Onwards

Bash Plate

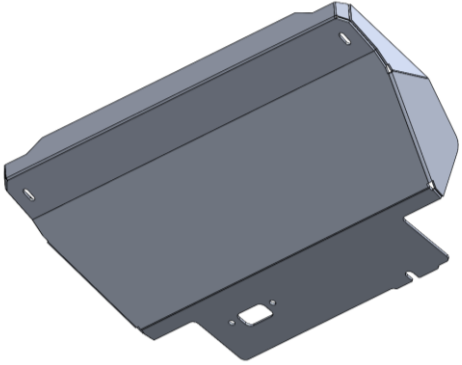
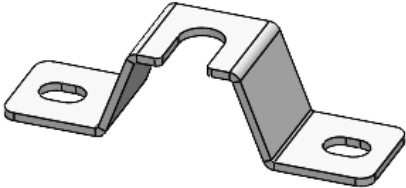
IMPORTANT! – READ BEFORE INSTALLATION

- This product must be installed exactly as per these instructions using only hardware supplied.
- Take a few moments to read instructions thoroughly before beginning work.
- In the event of damage to any component please contact OFFROAD ANIMAL to arrange repair/replacement of components.
- Do not use this product for any vehicle make or model other than that specified on these instructions.
- This product and its fixings must not be modified in any way unless stated in these fitting instructions.
- The installation of this product is recommended for trained personnel.
- These instructions are correct at time of publication. OFFROAD ANIMAL cannot be held responsible for the impact of any changes subsequently made by the vehicle manufacturer. If you find something has changed please contact us to let us know!
- During installation it is the duty of the installer to check correct operation/clearances of all components.
- If Instructions are to be printed for reference in the workshop, it is recommended that they are printed in colour, for best legibility.
- Fitting time: 20 min

PARTS LISTING

IMPORTANT: Check all parts are present before beginning work! Contact OFFROAD ANIMAL if something is missing.

Main Parts – In the Box

Qty	Part Number	Description	Image
1	U-0112	Next Gen Ranger Lower Bash Plate	
1	B-0807	Next Gen Lower Bash Plate Support Bracket	

Small Parts – Contained in Small Parts Kit Bag

Qty	Part Number	Description
2	M10 FLANGE NUT	Flange Nut, M10x1.5 G8.8 ZP
2	M10X20 BHCS	SCREW, BUTTON HEAD CAP, M10X20X1.5 GR12.9 ZP
2	M10 FW LHD	WASHER, FLAT M10X28.5X2.5





TOOLS REQUIRED

The following tools will be required to install the product.

Hand Tools	Power Tools	Workshop Equipment
15mm Spanner or Socket 6mm Allen/Hex Key	Air / Electric Impact Wrench - Optional	None

WORKSHOP SAFETY

It is the responsibility of the installer to always complete works in a safe manner. Make sure the following safety equipment is available and precautions are observed whilst fitting this product.

<p>Hearing Protection</p> 	<p>Always wear ear protection when using power tools.</p>
<p>Eye Protection</p> 	<p>Ensure eye protection is always worn when cutting or drilling.</p>
<p>Manual Handling</p> 	<p>Do not attempt to lift bar assemblies or rock sliders on your own.</p> <p>Always use two people to lift or use mechanical Lifting aid such as hydraulic lifting trolley.</p>
<p>Vehicle Support</p> 	<p>Always ensure vehicle is properly supported when working on it. Do not attempt to fit products whilst suspension work is being carried out. Do not work under a vehicle supported only by a jack.</p>



1. Fit the rear support bracket to the main bash plate, using supplied M10x20 Button head bolts, flat washers and Flange Nuts. Ensure the open slot faces towards the back of the bash plate.
2. Tighten with 6mm Hex Key

TOOLS REQUIRED

6mm Hex Key

FASTENERS



3. Remove factory Lower splash shield panel, by removing the 4x 15mm head Flanged head hex bolts securing it to the chassis.
4. Retain factory Bolts for re-use, discard the lower splash shield.
5. If fitting with Offroad Animal Bullbar, retain the M10 Flange nuts from the front mounting point for re-use

TOOLS REQUIRED

15mm Socket / Spanner

FASTENERS

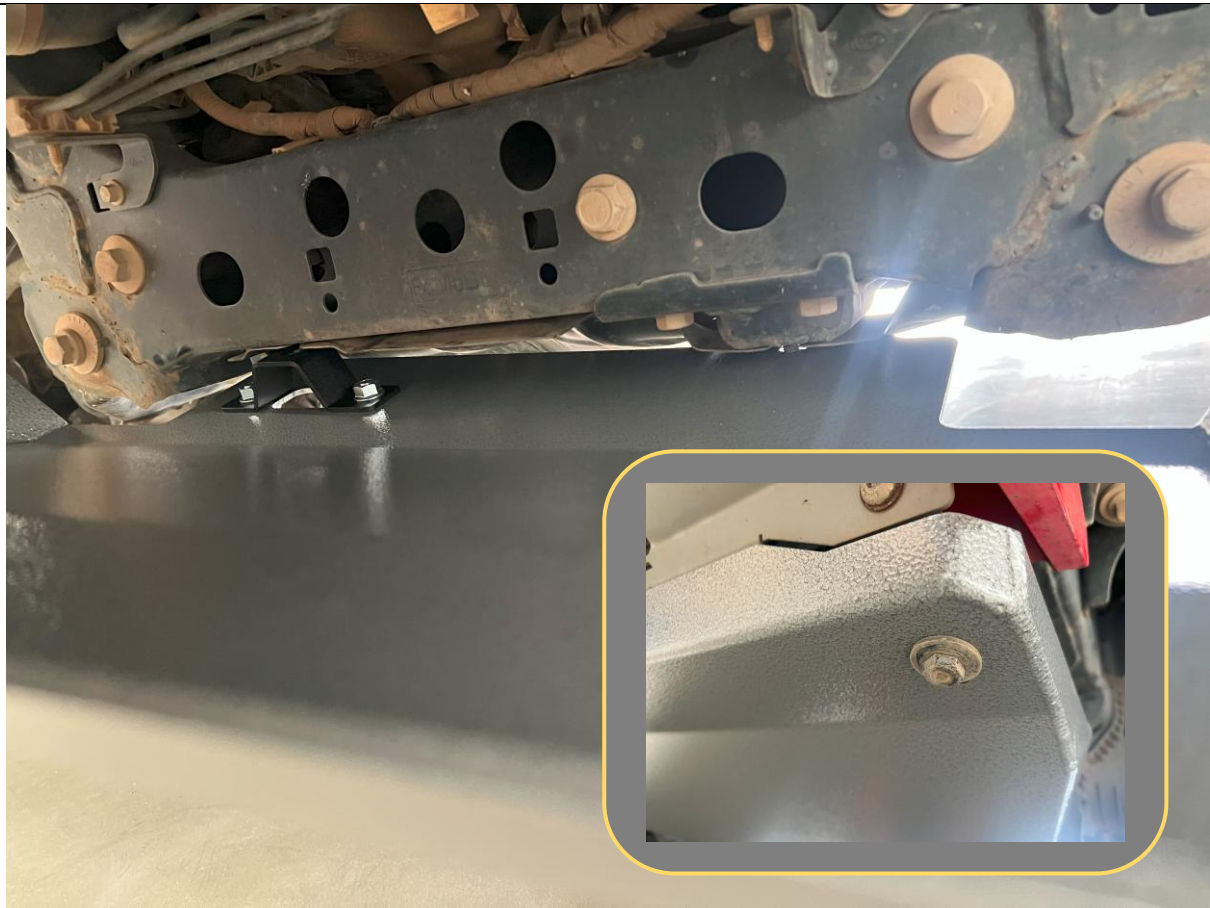
Retain for reuse



6. Replace the 2x rear bolts into the threaded points in the chassis, leaving plenty of thread exposed to allow the bash plate to slide over during fitment.
7. Position the and orient the bash plate as shown in preparation for fitment.

TOOLS REQUIRED**FASTENERS**

2x Factory Flange Bolts



8. Lift bash plate to chassis, and slide between the 2x rear bolts and chassis rail.
9. Secure the front of the bash plate to the chassis with original Flange bolts, into mounting points on the chassis.
10. If fitted with Offroad Animal bullbar the front mount will need to re-use the supplied M10 Flange nut supplied with the bullbar kit.

TOOLS REQUIRED**FASTENERS**

Reuse Factory hardware



11. Tighten the 4x 15mm Factory Flange Bolts.

12. With that you are done!

TOOLS REQUIRED

15mm Socket / Spanner

FASTENERS



Congratulations!

Head for the tracks and enjoy your newly protected Rig!