



## RAM 1500 DT 2019 + PREDATOR FRONT BAR

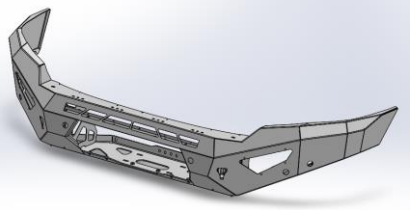
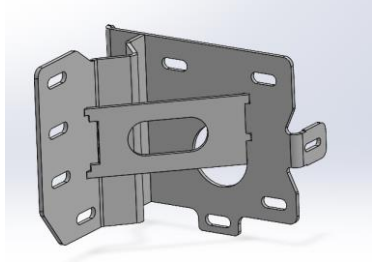
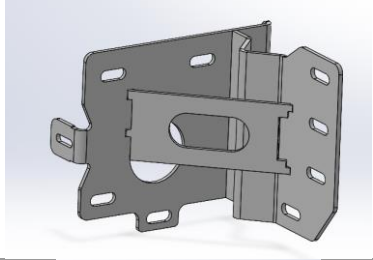
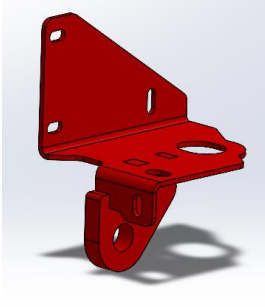
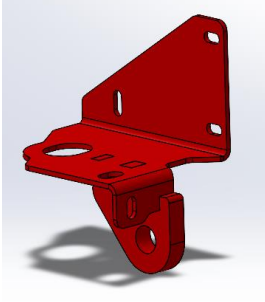
### **IMPORTANT! – READ BEFORE INSTALLATION**

- When installed in accordance with these instructions, the front protection bar does not affect the operation of the vehicles SRS airbags.
- This product must be installed exactly as per these instructions using only hardware supplied.
- Take a few moments to read instructions thoroughly before beginning work.
- In the event of damage to any bar component please contact OFFROAD ANIMAL to arrange repair/replacement of components.
- Do not use this product for any vehicle make or model other than that specified on these instructions.
- Do not remove labels from this product.
- This product and its fixings must not be modified in any way unless stated in these fitting instructions.
- The installation of this product is recommended for trained personnel.
- These instructions are correct at time of publication. OFFROAD ANIMAL cannot be held responsible for the impact of any changes subsequently made by the vehicle manufacturer. If you find something has changed, please contact us to let us know!
- During installation it is the duty of the installer to check correct operation/clearances of all components.
- If Instructions are to be printed for reference in the workshop, it is recommended that they are printed in colour, for best legibility.

## PARTS LISTING

**IMPORTANT:** Check all parts are present before beginning work! Contact OFFROAD ANIMAL if something is missing.

### Main Parts – In the Box

Qty	Part Number	Description	Image
1	FB-R15-DT-21-PR-ASM1	RAM1500 DT Predator Front Bar Weldment	
1	FB-R15-DT-21-PR-ASM2L	RAM 1500 DT Predator Impact Assy	
1	FB-R15-DT-21-ASM2R	RAM 1500 DT Predator Impact Assy	
1	FB-R15-DT-21-ASM3L	RAM 1500 DT Tow Point Assy	
1	FB-R15-DT-21-ASM3R	RAM 1500 DT Tow Point Assy	

<p><b>1</b></p>	<p>M-0016</p>	<p>RAM 1500 Predator Fairlead Mesh</p>	
<p><b>1</b></p>	<p>M-0017L</p>	<p>RAM 1500 Predator Side Mesh</p>	
<p><b>1</b></p>	<p>M-0017R</p>	<p>RAM 1500 Predator Side Mesh</p>	
<p><b>1</b></p>	<p>M-0002L</p>	<p>Light Cover Mesh</p>	
<p><b>1</b></p>	<p>M-0002R</p>	<p>Light Cover Mesh</p>	
<p><b>1</b></p>	<p>U-0043L</p>	<p>RAM 1500 DT Predator Side Underpanel</p>	
<p><b>1</b></p>	<p>U-0043R</p>	<p>RAM 1500 DT Predator Side Underpanel</p>	

1	U-0042	RAM 1500 DT Predator Center Bash Plate	
1	U-0044	RAM 1500 DT Predator Lower Bash Plate	
1	B-0573L	Ram 1500 DT Winch Brace	
1	B-0573L	Ram 1500 DT Winch Brace	
1	B-0519L	Ram 1500 Halo Fog Light Bracket	
1	B-0519R	Ram 1500 Halo Fog Light Bracket	
1	B-0589	RAM1500 DT Winch Control box mount bracket	
1	B-0571	Ram DT Gusset - Pan Brace	
2	P-0187	RAM1500 DT Tow Point Load Spreader Plate	
1	NPF-COM-SM-ASM0	Number plate flip asm Small	

**Small Parts – Contained in Small Parts Kit Bag**

Qty	Part Number	Description
6	M8 X 16 BHCS BZP	SCREW, BUTTON HEAD CAP, M8X16X1.25 GR12.9 BLACK ZP
15	M8 FLAT WASHER BLACK ZINC	M8 FW- BLACK ZINC
14	M6 FLANGE NUT	Flange Nut, M6x1 G8.8 ZP
21	M6x16 BHCS BLACK ZINC	SCREW, BUTTON HEAD CAP, M6X16X1 GR12.9 BLACK ZP
21	M6 FLAT WASHER BLACK ZINC	M6 FW BLACK ZP
10	M6CN3MM	CAGE NUT M6x2.6-3.5
11	M8 FLANGE NUT	Flange Nut, M8x1.25 G8.8 ZP
10	M8 X 20 HEX	Bolt Hex, M8X20x1.25, GR8.8 ZP
10	M8 FLAT WASHER	M8 FW
6	M8 X 30 BHCS BLACK ZINC	SCREW, BUTTON HEAD CAP, M8X30X1.25 BLACK ZP
12	M12 FLANGE NUT	Flange Nut, M12x1.75 G8.8 ZP
16	M12 FW LHD	M12 FW Large Heavy Duty
14	M12X30	Bolt Hex, M12X30x1.75, GR8.8 ZP
2	M12 Nyloc nut	M12 NYLOC NUT
10	M10 x 25	Bolt Hex, M10X25x[1.5], GR8.8 ZP
14	M10 Flat Washer	M10 FW
12	M10 FLANGE NUT	Flange Nut, M10x1.5 G8.8 ZP
2	M10 FW LHD	WASHER, FLAT M10X28.5X2.5
3	M10X20 BHCS	SCREW, BUTTON HEAD CAP, M10X20X1.5 GR12.9 ZP
3	M8 X 20 BHCS BLACK ZINC	SCREW, BUTTON HEAD CAP, M8X20X1.25 BLACK ZP
3	M6 FLAT WASHER	M6 FW
3	M6x12 BHCS	SCREW, BUTTON HEAD CAP, M6X12X1 GR12.9 ZP
8	M4X12 PAN	SCREW, PAN HEAD PHILLIPS, M4X12X0.7 GR4.6 ZP
8	M4 FLANGE NUT	Flange Nut, M4
8	M4 FLAT WASHER	Flat Washer M4, 8mmODx0.8mm T
2	PW-P-14X9-800	Pinch Weld - Plain 14X9MM, Rubber, 800mm Length

## TOOLS REQUIRED

The following tools will be required to install the product.

<b>Hand Tools</b>	<b>Power Tools</b>	<b>Workshop Supplies</b>
Metric Socket Set 8-19mm Socket Extension Bar Metric Spanner Set 10-19mm Hex (Allen) Key Set 4-6mm Trim Puller Tool Flat Blade Screwdriver set Phillips Head Screwdriver set Utility Knife Side Cutters Pliers Wire Stripper	Electric Drill 6mm Drill Bit  Air Hacksaw or Angle Grinder  Electric/Air Impact Driver (Optional)  Soldering Iron (Optional)	Panel Stand or Soft Blanket Cable Ties Masking Tape

# WORKSHOP SAFETY

It is the responsibility of the installer to always complete works in a safe manner. Make sure the following safety equipment is available and precautions are observed whilst fitting this product.

<p>Hearing Protection</p> 	<p>Always wear ear protection when using power tools.</p>
<p>Eye Protection</p> 	<p>Ensure eye protection is always worn when cutting or drilling.</p>
<p>Manual Handling</p> 	<p>Do not attempt to lift bar assemblies or rock sliders on your own.</p> <p>Always use two people to lift or use mechanical Lifting aid such as hydraulic lifting trolley.</p>
<p>Vehicle Support</p> 	<p>Always ensure vehicle is properly supported when working on it. Do not attempt to fit products whilst suspension work is being carried out. Do not work under a vehicle supported only by a jack.</p>



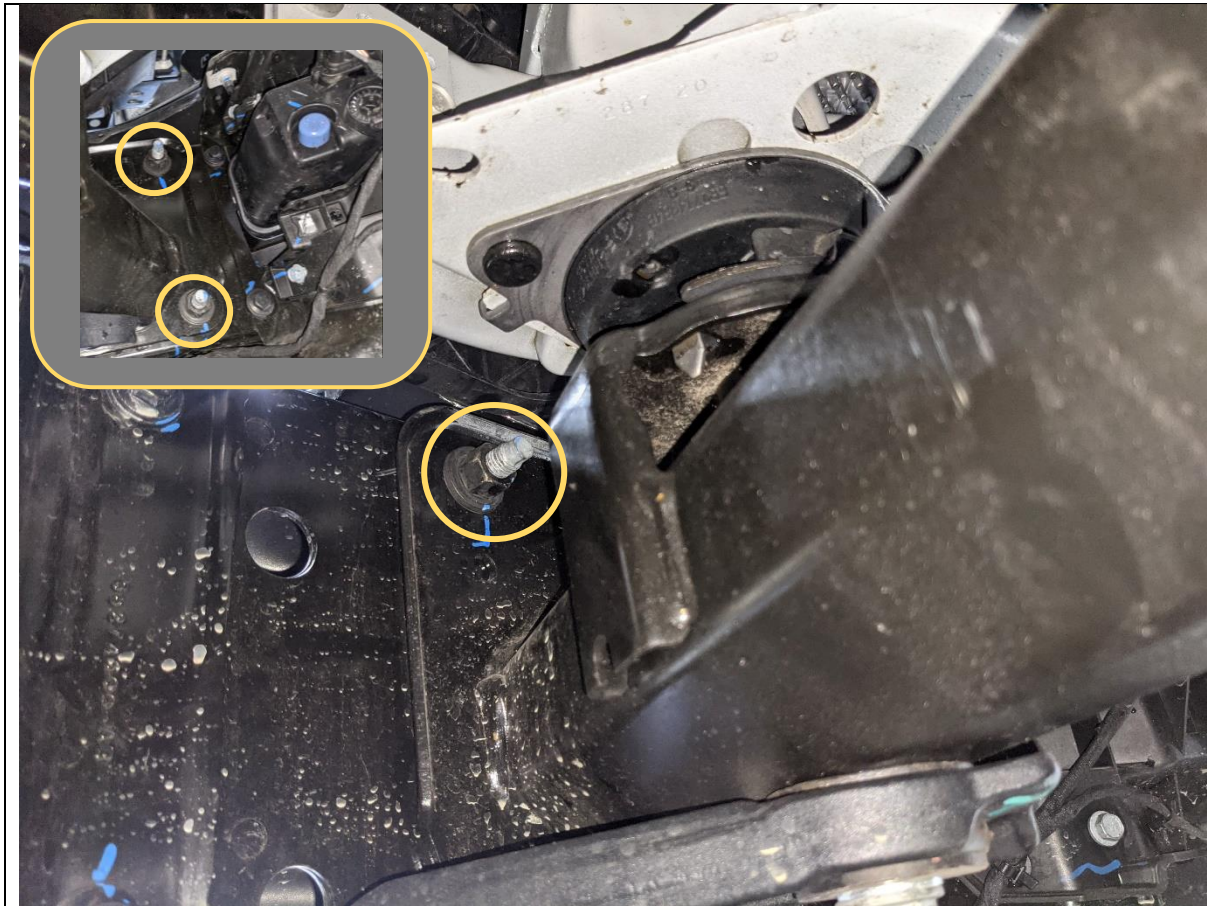
1. Remove the 2x 10mm head screws securing the inner guard to the chassis.
2. Remove the 2x 10mm head screws securing the inner guard to the edge of the bumper.
3. Complete on both sides of vehicle.

**TOOLS REQUIRED**  
10mm Socket

**FASTENERS**  
4x 10mm Head factory screws.

Retain





- 4. From underneath the car, remove the 3x Factory flange nuts securing the bumper to the end of the chassis rail.
- 5. Remove on both sides of vehicle

**TOOLS REQUIRED**

Trim Tool  
18mm Spanner

**FASTENERS**

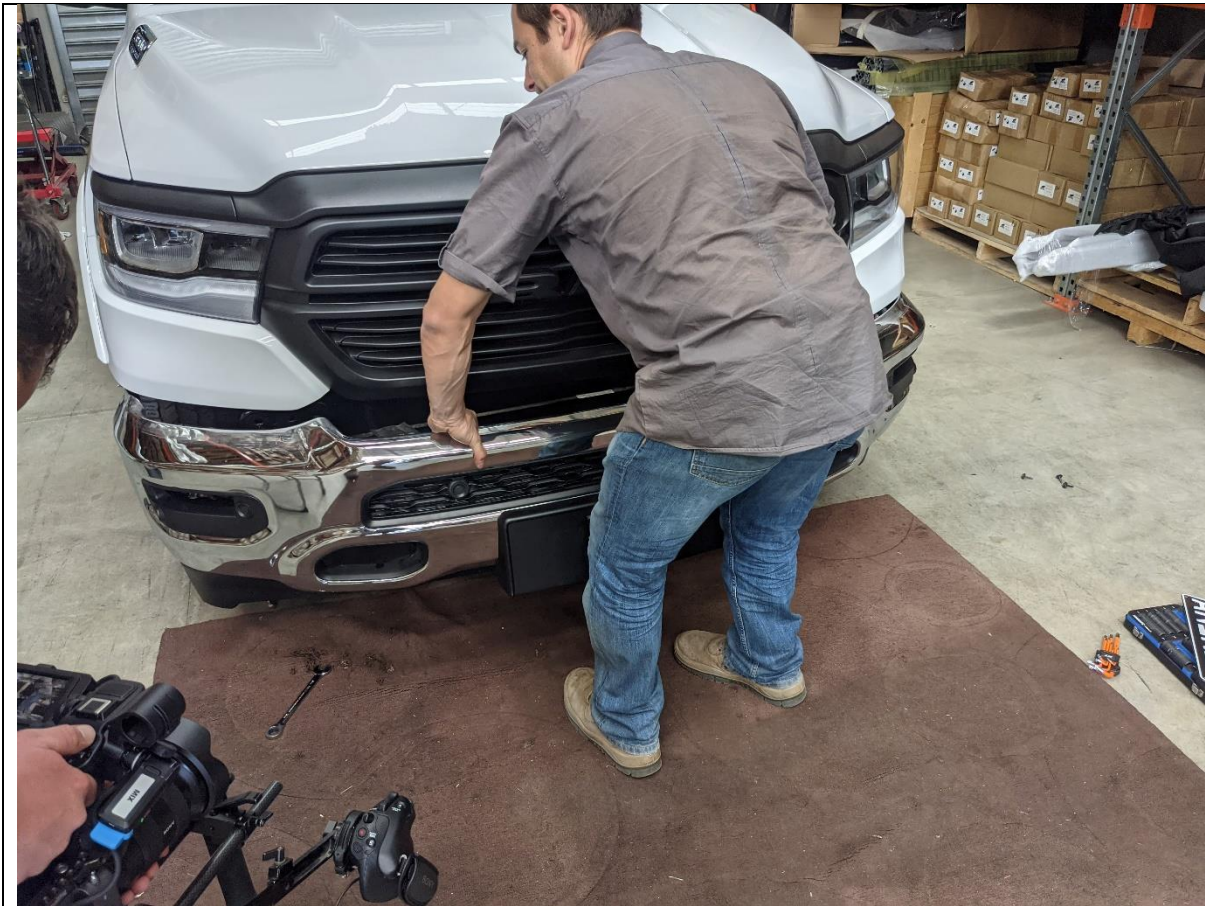
Factory Flange Nuts



6. Disconnect the fog light and parking sensor loom, located underneath the LH headlight.

**TOOLS REQUIRED**

**FASTENERS**



7. Remove front bumper by lifting forward off the car.
8. Set bumper aside and remove number plate.

**TOOLS REQUIRED**

**FASTENERS**





9. Disconnect the harness connector on the active air dam module.
10. Unscrew the factory flange nuts from the chassis mounted studs and remove front active air dam actuator.

**TOOLS REQUIRED**  
13mm socket

**FASTENERS**  
Factory Flange Nuts  
Retain



11. Remove the factory tow hooks, by removing the Factory Fine pitch bolts securing it to the chassis.

Hold tow point whilst removing fasteners to prevent it falling.

Complete for both sides of vehicle

**TOOLS REQUIRED**  
18mm Socket

**FASTENERS**  
M12 Fine pitch factory bolt –  
Retain for Reuse





12. Remove the rubber bushes from the back side of the factory tow points by pushing down through center of bush with long factory bolt as shown in image above.

**TOOLS REQUIRED**  
Long factory bolt

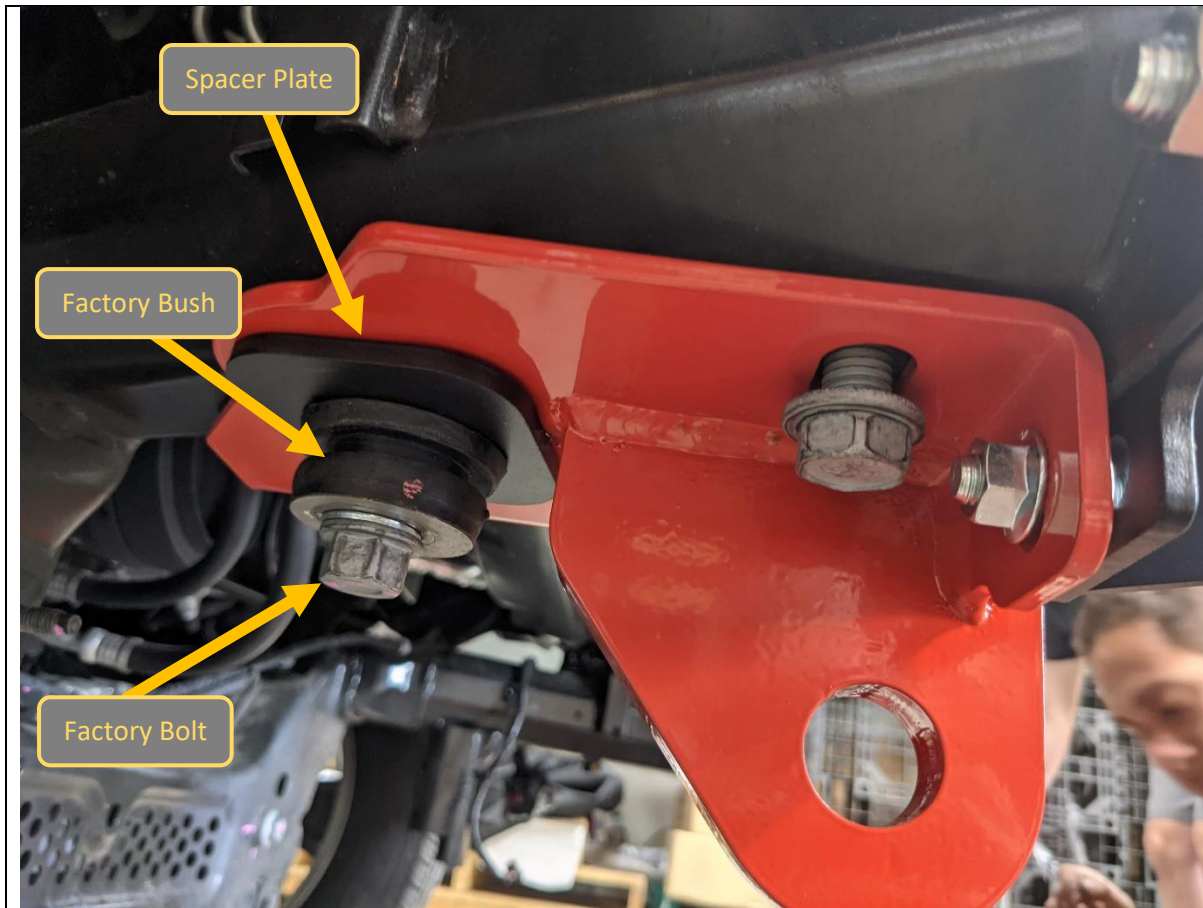
**FASTENERS**



13. Fit the Impact assembly the chassis, with M12x30 Bolts, Flat washers, and M12 Flange Nuts.
14. Leave all bolts finger tight, complete for both sides of vehicle.

**TOOLS REQUIRED**

**FASTENERS**  
 3x M12x30  
 3x M12 Large Flat washer  
 3x M12 Flange Nut  
 Per side



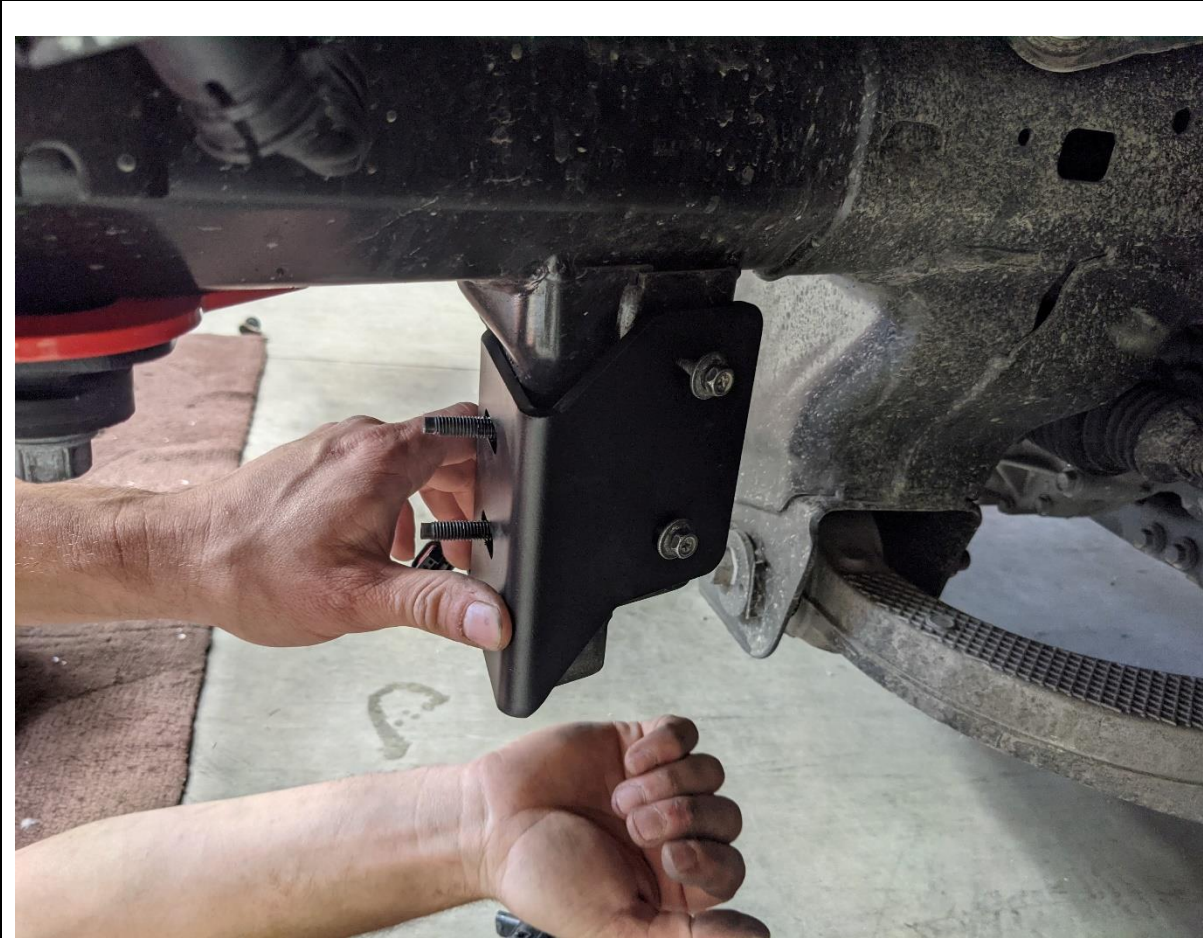
15. Fit the tow point to the chassis, Using original factory bolts in original locations.
16. On rear long bolt, with the protruding stud in the chassis, place the spacer plate and Factory bush over the bolt in the order shown in image.
17. Secure tow point to impact assembly using M10x25 Bolt, Flat washer and M10 Flange Nut
18. Leave all bolts finger tight, complete for both sides of vehicle.

**TOOLS REQUIRED**

**FASTENERS**

- Factory fine pitch Bolts
- 1xM10x25
- 1xM10 Flat washer
- 1xM10 Flange Nut
- Per side





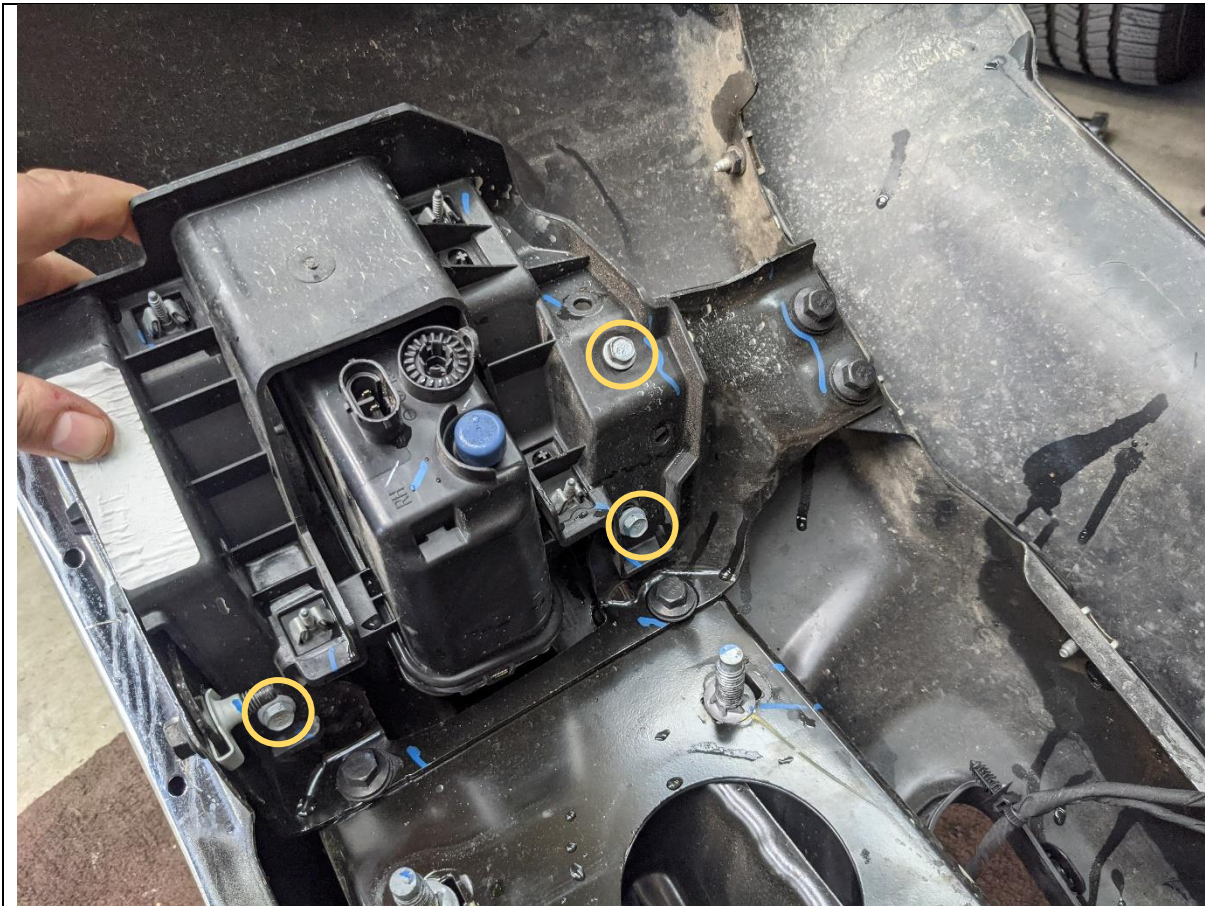
19. Fit the Bash Plate Mount Bracket to the chassis, Using Factory flange nuts and bolts removed from the inner guard liner and active air dam.

**TOOLS REQUIRED**

10mm Socket  
13mm Socket

**FASTENERS**

Factory Flange nuts  
Factory screws



20. Remove fog light surrounding from bar to create better access to parking sensors.

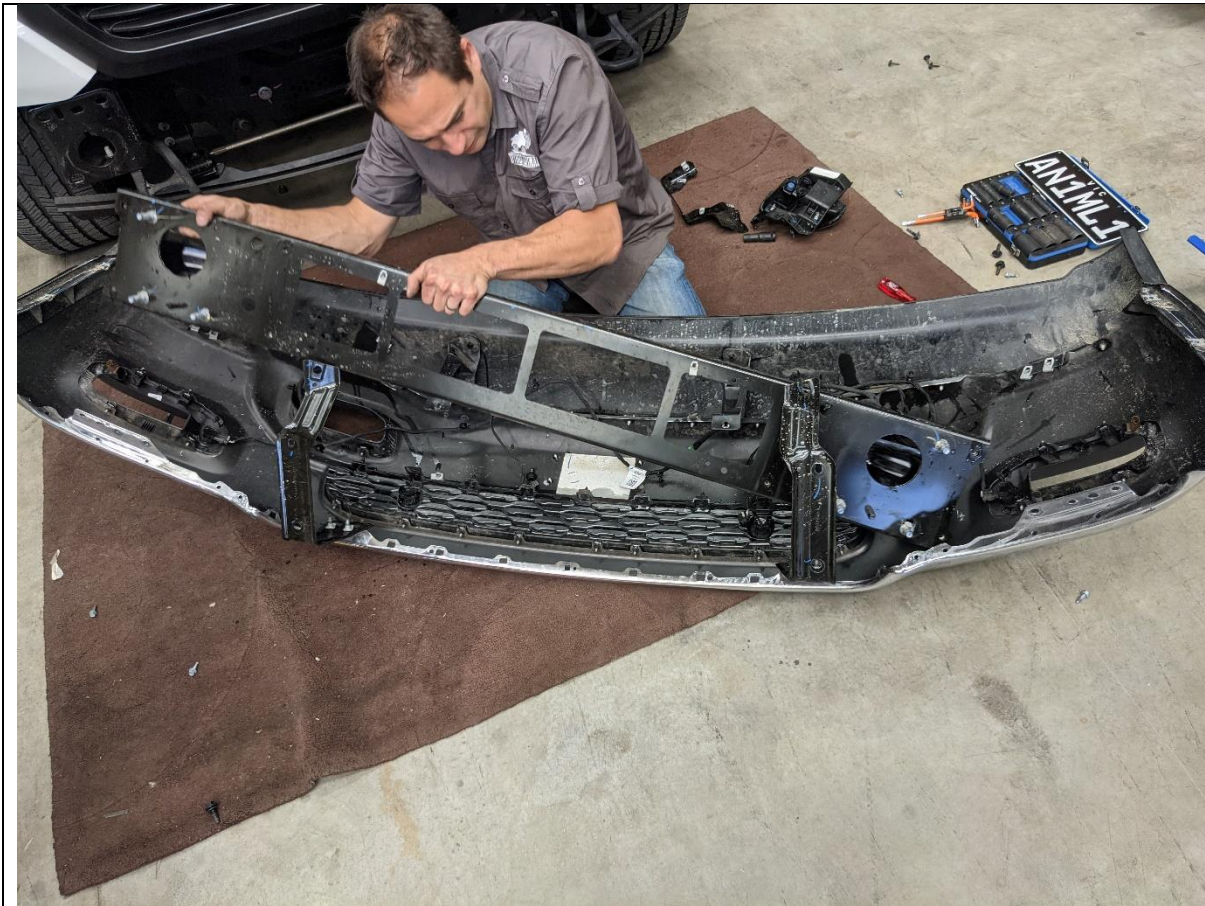
**TOOLS REQUIRED**

10mm socket.

**FASTENERS**

Factory Bolts





21. Remove the center beam from the bumper. This will give better access to the parking sensors for removal.

**TOOLS REQUIRED**

Spanners  
Trim Tool

**FASTENERS**



22. Unplug sensors and remove from the housings. Separate the retaining tabs on back side whilst pushing sensor through from front side of bar to release.

23. Remove sensor housings from front bumper. Squeeze on the 4x retaining tabs whilst pushing housing from back side of bar to release.

24. Remove from front side of bar. Note position sensor housings removed from to ensure correct location for refitting to Bulbar.

**TOOLS REQUIRED**

**FASTENERS**





25. Remove the loom from the lower bumper, by prying off all clips securing the loom to the bumper with a trim tool.

**TOOLS REQUIRED**

Trim Tool

**FASTENERS**



- 26. Fit sensor housings into the bulbar, by pressing into holes in bar from the front side.
- 27. Take care to ensure that housings are inserted in original location.

**TOOLS REQUIRED**

**FASTENERS**



28. Pass wiring loom through bar uprights, starting from the left-hand side of the bar.

**TOOLS REQUIRED**

**FASTENERS**





- 29. Fit parking sensors into housings. Push sensors into housings until the retaining tabs hold each sensor in place.
- 30. Pressure may need to be applied to front side of housing whilst pushing in sensors to prevent it pushing through bar.
- 31. Plug in all sensors to sensor harness.

**TOOLS REQUIRED**

**FASTENERS**





- 32. If fitting an integrated light bar, do so now.
- 33. The bar is designed to fit an Offroad Animal 32 inch light bar. If fitting this light bar, assemble bar with legs Outward, and it will line up with the slots in the center gusset.
- 34. The bar can accommodate most other "32 inch" size light (30-32 inch long) bars.

**TOOLS REQUIRED**

**FASTENERS**

Supplied with light bar



35. If fitting optional halo fog lights, Fit Halo fog lights to the fog light brackets using the M4 Hardware supplied.

**TOOLS REQUIRED**

Small Phillips screwdriver

**FASTENERS**

4x M4 Screw  
4xM4 Washers  
4xM4 Flange Nuts





- 36. Fit the fog light bracket to the Mesh panel using 2x M8x20 bolts, flange nuts and flat washers. Ensure that the lower slot is aligned with the hole in the mesh panel.
- 37. Fit the fog light mesh panels to the bar, using M6x16 Black button head bolts, Black flat washers, and M6 Flange nuts
- 38. Wire fog lights to fog light circuit of main wiring harness.
- 39. Repeat for both sides of bar.

**TOOLS REQUIRED**

13mm Spanner,  
4mm Hex Key

**FASTENERS**

2x M8x20 Bolts  
2x M8 Flat Washer  
2x M8 Flange Nut  
4x M6 Black BHCS  
4x M6 Black Washer  
4x M6 Flange Nut



40. Fit 5x cage nuts to rectangle slots on the bottom edge of wing. Repeat for both sides of vehicle.

41. Use small flat blade screwdriver to assist in setting cage nuts in position

**TOOLS REQUIRED**

Small Flat screwdriver

**FASTENERS**

10x M6 Cage Nuts



42. If fitting Stealth hoop or driving lights do so at this stage.

43. Fit the Pan brace to the back side of bar between the Pan and center gusset, using M6x12 Button head bolts, Washers and Flange nuts on the bottom and M6x16 Black Button head bolts, Black Washers, and Flange nuts on the top.

44. Fit pinch weld to top edge of wings on both sides of bar.

**TOOLS REQUIRED**

4mm Hex Key

**FASTENERS**

- 3x M6x12 BHCS
- 3x M6x16 Black BHCS
- 3x M6 Flat Washer
- 3x M6 Black Flat Washer
- 6x M6 Flange Nut





45. Measure Distance between outside edges uprights on bar using tape measure. Write distance below for reference if required.

Bar Upright Width = \_\_\_\_\_mm

46. Adjust mounts by sliding mounts on slots, such that distance between outside edges of mounts is approximately 2mm less than bar.

47. Secure and tighten mounts. Tighten bolts that secure the Impact assembly to chassis first, then tow point to chassis bolts and finally impact assembly to tow point bolts.

**TOOLS REQUIRED**

- 18mm Socket
- 16mm Socket
- Tape Measure

**FASTENERS**



- 48. The wheel arch flare needs to be trimmed.
- 49. Place masking tape on flare in location shown.
- 50. Mark cut position parallel to bottom of Flare, 155mm above, as shown in image above.
- 51. Pry the flare carefully away from the body of the vehicle, releasing the clips which can be squeezed from behind to aid release
- 52. Carefully cut the line as marked with an angle grinder or air hacksaw.

**TOOLS REQUIRED**  
Angle Grinder  
Or  
Air Hacksaw

**FASTENERS**



53. Using a lift trolley fit or assistance from another person, fit the bar to the vehicle.

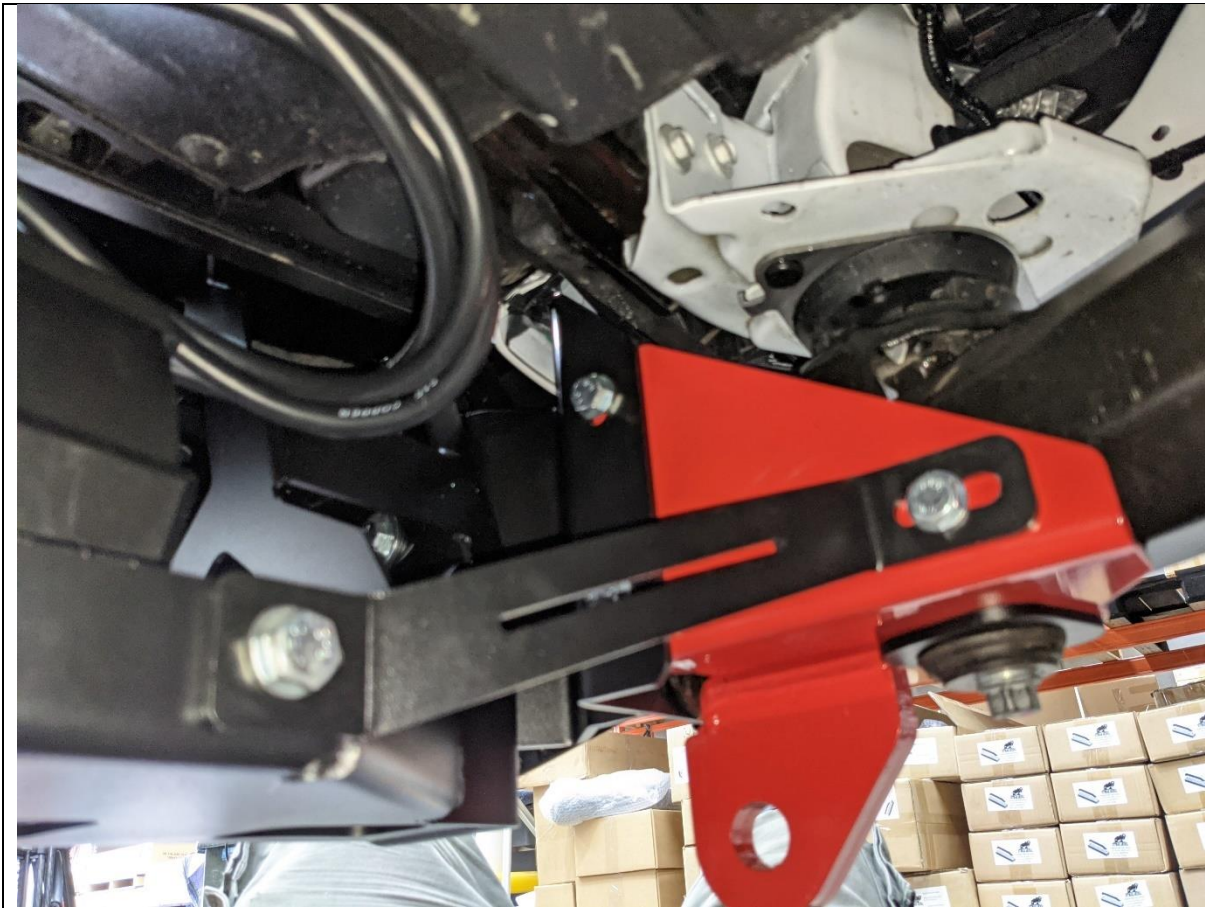
54. Once in position fit secure with the main mounting bolts. 1x Set per side are M12x30 with 2x Large Flat washers and M12 Nyloc Nut. Rest are M12x30 with 1x Large Flat washers and M12 Flange Nut

55. Ensure bar is centered and has even gap of approx. 10-15mm on both sides near headlight. Tighten all bolts to lock in place.

**TOOLS REQUIRED**  
18 & 19mm Socket /  
Spanner

**FASTENERS**  
8x M12x30 Hex Bolt  
14x M12 Large Washer  
2x M12 Nyloc Nut  
6x M12 Flange Nut





- 56. Fit the winch brace bracket.
- 57. First fit to winch cradle with M10x25 bolt, Flat washer and Flange Nut.
- 58. Next winch Tow point with M10x25 bolt, Flat washer and Flange Nut.
- 59. Repeat for both sides of vehicle.
- 60. Tighten all bolts

**TOOLS REQUIRED**  
16mm Spanner

**FASTENERS**  
4xM10x25  
4xM10 Flat washer  
4xM10 Flange Nut



- 61. If fitting a winch, do so now.
- 62. The bar is designed to fit most low mount winches, in foot down configuration. WARN 16.5ti is largest winch confirmed to fit.
- 63. The control box can be mounted on the supplied control box bracket, which affixes to the rear of the winch cradle or directly affixed to the back of the cradle slots.

**TOOLS REQUIRED**  
Refer to Winch Instruction

**FASTENERS**  
Supplied with winch





- 64. Prepare the Center mesh panel for fitment.
- 65. If Required, Fit winch fairlead to Mesh Fairlead Mount. Use M10 or 3/8" Fasteners supplied with winch. The bar is only compatible with Hawse type fairleads.
- 66. Fit Number plate flip kit to fairlead mount, using fasteners supplied in kit.

**TOOLS REQUIRED**  
Ref Winch Mfg

**FASTENERS**  
Supplied with winch / Number plate kit



- 67. Fit the Mesh Fairlead Mount to the threaded points in the center of the bar, using M8x16 Button head (Top), M8x20 Hex Head (Bottom) M8 Flat washers.
- 68. Tighten fasteners using 13mm socket / spanner and 5mm Allen Wrench.

**TOOLS REQUIRED**  
13mm Spanner  
5mm Allen Wrench

**FASTENERS**  
2x M8x16 Button Head  
2x M8x20 Hex Head  
4xM8 Flat Washer





- 69. Fit Mesh Infill Panels. Use 2x M8x16 Button head bolt, M8 flat washer and M8 flange nut for top mount.  
  
Insert panels on an angle as shown to position the outer flange behind the return on the front face of the bar,
- 70. Don't fit any bolts to bottom holes at this stage.
- 71. Tighten top fasteners using 13mm socket / spanner and 5mm Allen Wrench.

<b>TOOLS REQUIRED</b>
5mm Allen Wrench
<b>FASTENERS</b>
4x M8x16 Button Head 4x M8 Flat Washer

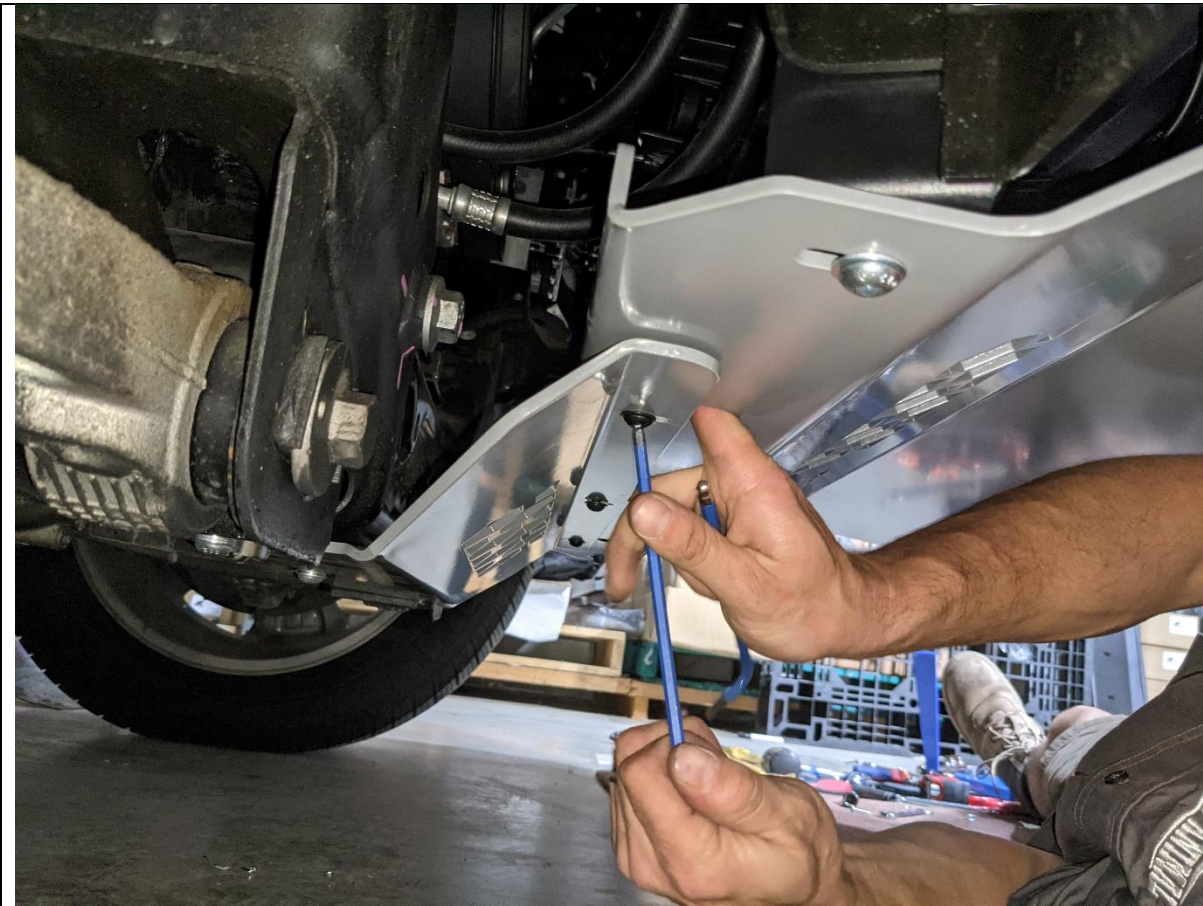


- 72. Fit Center Bash Plate to bar using, M8x30 button heads, flat washers and flange nuts to front face. Ensure these fasteners pass through the side mesh panels also.
- 73. Secure back of Center Bash Plate using the M10x20 Button Head bolts, Flat washer and flange nuts, to the support bracket fitted to the chassis.
- 74. Tighten Bottom fasteners using 6mm Hex Key
- 75. Tighten front fasteners using 5mm Hex Key.

**TOOLS REQUIRED**  
5mm Hex Key  
6mm Hex Key

**FASTENERS**

6x M8x30 Button Head  
6x M8 Flat Washer  
2x M10x20 Button Head  
2x M10 Flat Washer  
2x M10 Flange Nut



76. Fit secondary under panel to the primary center under panel with 3x M8x20 Button head bolts, Flat washer, and Flange nuts. Position nuts using access holes in under panel as shown.

77. Tighten Bottom fasteners using 6mm Hex Key

78. Tighten Top fasteners using 5mm Hex Key.

**TOOLS REQUIRED**

- 5mm Hex Key
- 6mm Hex Key

**FASTENERS**

- 3x M8x20 Button Head
- 3x M8 Flat Washer
- 3x M8 Flange Nut
- 2x M10x20 Button Head
- 2x M10 Flat Washer
- 2x M10 Flange Nut





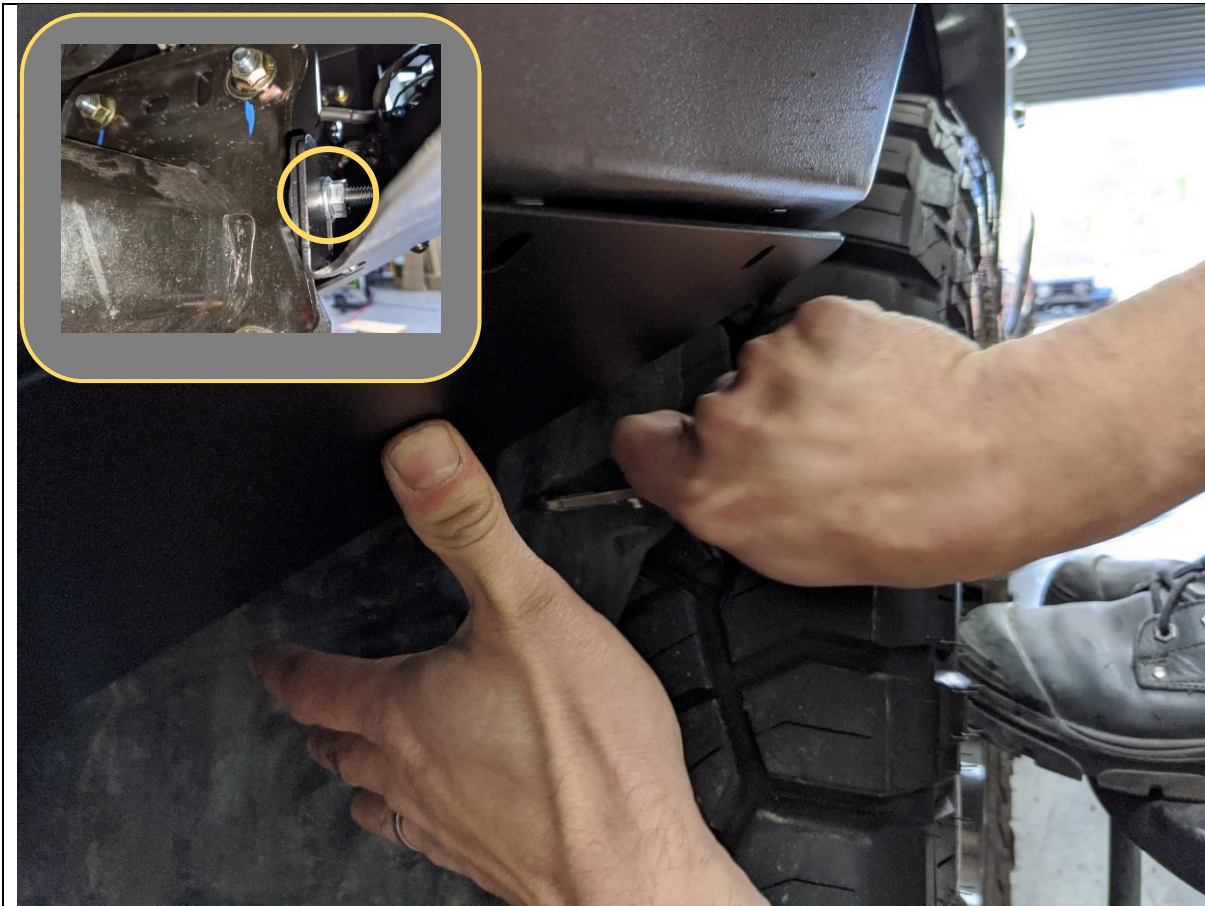
- 79. Reconnect the main bar electrical harness, located under LHS headlight.
- 80. Loosely Fit side under panels using M6x16mm Socket head screws into the cage nuts in the wing, fitted earlier.
- 81. Complete for both sides of vehicle

**TOOLS REQUIRED**

**FASTENERS**

- 10x M6x16 Button Head Screws
- 10x M6 Flat Washer





- 82. Using the edge of the under panel as a guide, trim the wheel arch liner to the profile of the under panel, with an approximate 20mm overhang.
- 83. Use a sharp utility knife to cut the wheel arch liner.
- 84. Tuck the wheel arch liner behind the flanges on the under panel.
- 85. Fit the bottom support M8x20 bolts to secure the under panel to the tow points
- 86. Tighten all bolts securing under panel.

**TOOLS REQUIRED**  
4mm Hex Key  
13mm Socket / Spanner

**FASTENERS**  
4x M8x20 Bolt,  
4x M8 Flange Nut  
4x M8 Flat Washer



- 87. Re Check all Fasteners are tight.
- 88. Re-Fit Number Plate to number plate flip.
- 89. Your done. Hit the tracks and enjoy your newly protected RAM!

**TOOLS REQUIRED**

**FASTENERS**