



RAKTANK  **50**
WATER TANK



Universal Fit kit
Part Number # RTFKUNI5

WARNING

This kit is a universal kit and has not been tested to fit in any specific application. The responsibility of the installation will fall on the installer of Raktank. Always seek the advice of a professional if the strength of the structure the Raktank is mounted to is in question.

Prior to use, it recommended that the tank be thoroughly washed with mild dishwashing detergent and allow to air dry completely.

Important Safety Information:

1. The water tank must be mounted completely flat on the mounting surface (slats and/or cross bars).
2. For your safety, only use a roof rack or cross bars that are approved for your vehicle. The (off-road) dynamic weight rating must be greater than the weight of the water tank at full capacity (including mounting kit and traction boards). Always consult your vehicle and roof rack manuals and ensure you are following their advice regarding on-road and off-road load limits.
3. Periodically check that all nuts and bolts that secure your water tank to your vehicle are torqued to specification and in good repair. Note: Large ambient temperature fluctuations can result in loss of tension of the mounting hardware.
4. Improper installation or use of your water tank may result in serious injury or damage. You will need to follow these installation instructions carefully to ensure proper installation on your vehicle and safe use of your water tank.
 - a. If the tank has been fitted to a vehicle that has been in an accident, the tank and mounting hardware need to be inspected before next use. For any queries regarding the ability to use the product after an accident, contact Pak Offroad at info@pakoffroad.com
5. Make sure that you give due consideration to the change in your vehicle height and driving behaviour.

The manufacturer is not liable for any damage or accident that may occur as a result of a non-compliance with these usage instructions, modifications made to parts or the usage of any parts other than the manufacturer's original parts. The warnings, cautions and instructions in this document can't cover every possible situation, so it is understood by the operator that common sense and caution must be applied.

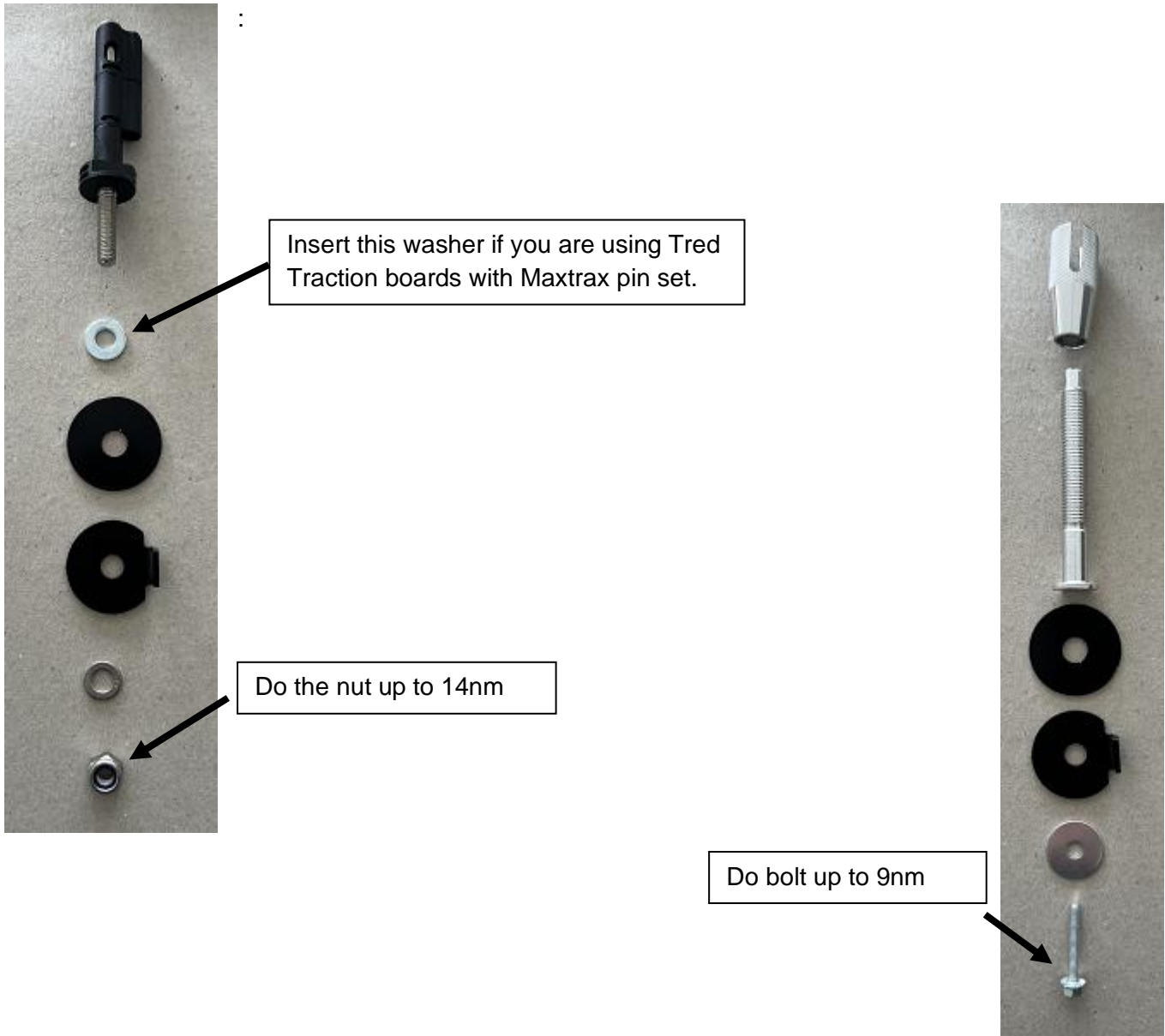
The manufacturer's warranty covers manufacturing faults and lasts three (3) years within regular use. It is only valid if the instructions and recommendations in this document are adhered to and only applies to the first owner.

Installation of the fit kit:

Step 1: Installation of the mounting pins for the traction boards to the tank.

- Lay the tank on an easy to reach table at a good working height.
- Follow the exploded view of the mounting of the required pins.
- Please note: **Spending the extra time to make sure that the pins are correctly aligned and that the traction boards can be removed easily is beneficial.**

Maxtrax Mounting Pins (Part Number # MTXMPS40) exploded view:



Tred mounting pins exploded view:



Please have the tongue of the bottom lock washer facing upwards

Your traction boards should look like the image below:



Step 2: Mounting the tank to the Roof Rack:



In the image to the left, you will see the best configuration of how the backing plates are laid out. Make sure that the backing plate stays central to the baffle and that you use the centre hole of the backing plate where possible.

The 3 baffles that run east/west to the tank are the strongest baffles in the tank and must always be used.

- **Make sure that all 5 backing plates are used to hold the Raktank into position and consider that the surface that the tank is mounted to is strong enough to retain the mass of the fully loaded Raktank. Also make sure that any backing plates by the installer are sufficient and fit for purpose.**
- Once you have lined up these baffles, do up the bolts through the T slot and fit the tank on top of the base. Make sure that the bolts are central to the baffle hole and that they are not touching the tank in any way.

- Fit the supplied M10 washers and the nyloc nuts and then do up to 12NM.
- Once you have fitted the washes and nuts allow to sit and check tension over the bolts again. You will need to check the tension of the nuts after installation. This should be done periodically. **Large ambient temperature fluctuations can result in loss of tension of the mounting hardware, so check the tension of the mounts.**
- **If fitting this for a customer, please remind them of this requirement and supply a copy of the user manual to them and check the tension of the fasteners on a regular basis.**
- Place the traction boards on the top of the tank and installation will be complete.
- **If at any stage of the installation there are any questions on the strength of the structure that the Raktank is being mounted to, always seek the advice of a professional.**
- For any other questions, email info@pakoffroad.com.au