



Suzuki Jimny JB74 MY2018-Current Predator Bull Bar

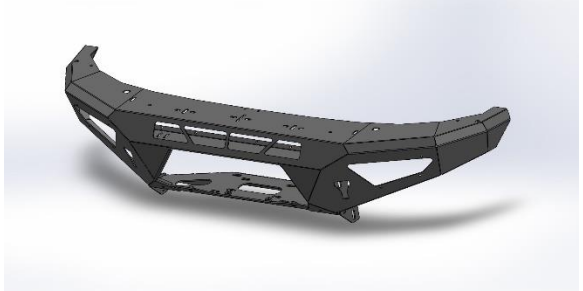
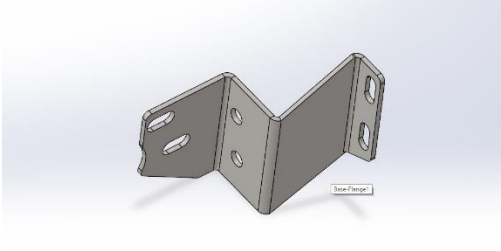
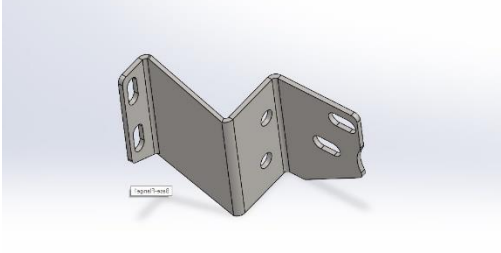
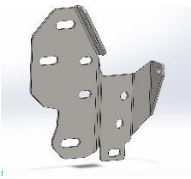
IMPORTANT! – READ BEFORE INSTALLATION

- When installed in accordance with these instructions, the front protection bar does not affect the operation of the vehicles SRS airbags.
- This product must be installed exactly as per these instructions using only hardware supplied.
- Take a few moments to read instructions thoroughly before beginning work.
- In the event of damage to any component please contact OFFROAD ANIMAL to arrange repair/replacement of components.
- Do not use this product for any vehicle make or model other than that specified on these instructions.
- Do not remove labels from this product.
- This product and its fixings must not be modified in any way unless stated in these fitting instructions.
- The installation of this product is recommended for trained personnel.
- These instructions are correct at time of publication. OFFROAD ANIMAL cannot be held responsible for the impact of any changes subsequently made by the vehicle manufacturer. If you find something has changed please contact us to let us know!
- During installation it is the duty of the installer to check correct operation/clearances of all components.
- If Instructions are to be printed for reference in the workshop, it is recommended that they are printed in color, for best legibility.
- Estimated install time: 2-3 hours
- There is a full video showing this install here <https://www.youtube.com/watch?v=rfrDa2nmyXw>

PARTS LISTING

IMPORTANT: Check all parts are present before beginning work! Contact OFFROAD ANIMAL if something is missing.

Main Parts – In the Box

Qty	Part Number	Description	Image
1	FB-SJM-JB74-19-PR-ASM1	Jimny JB74 weldment	
1	B-0710L	JB74 Chassis Mount Inner LH	
1	B-0710R	JB74 Chassis Mount Inner RH	
1	B-0709L	JB74 Chassis Mount Outer LH	

<p>1</p>	<p>B-0709R</p>	<p>JB74 Chassis Mount Outer RH</p>	
<p>1</p>	<p>B-0713R</p>	<p>JB74 Wing Brace RH</p>	
<p>1</p>	<p>B-0713L</p>	<p>JB74 Wing Brace LH</p>	
<p>1</p>	<p>NPF-COM- SM-ASMO</p>	<p>Number plate flip</p>	
<p>1</p>	<p>M-002L</p>	<p>Light cover Mesh LH</p>	
<p>1</p>	<p>M-002R</p>	<p>Light Cover Mesh RH</p>	

<p>2</p>	<p>B-0711L</p>	<p>JB74 RECOVERY POINT LH</p>	
<p>1</p>	<p>B-0711R</p>	<p>JB74 RECOVERY POINT RH</p>	
<p>2</p>	<p>B-0712L</p>	<p>JB74 FOG LIGHT BRACKET LH</p>	
<p>1</p>	<p>B-0712R</p>	<p>JB74 FOG LIGHT BRACKET RH</p>	
<p>1</p>	<p>B-0714</p>	<p>JB74 PAN BRACE</p>	
<p>1</p>	<p>B-0216</p>	<p>RANGER WINCH CONTROL BOX BRACKET</p>	

1	P-0226	JB74 RECOVERY POINT CLAMP	
1	U-0048	JB74 BASH PLATE	
1	M-0027	JB74 CENTRE MESH	
1	P-0227	JB74 WINCH ADAPTOR PLATE	
4	T-0043	JB74 CRUSH TUBE	

Small Parts – Contained in Small Parts Kit Bag

Qty	Part Number	Description
16	M10X30	Bolt Hex, M10x30 gr8.8 zp
24	M10 FW LHD	Washer Flat M10 Heavy duty
4	M10 NY	M10 Nyloc nut
18	M10 FN	M10 Flange nut
4	M10x80 (10.9)	MJ10 x 80 Hex bolt, GR 10.9 ZP
20	M6x16 BHCS BZ	M6x16 Button Head Cap Screws, Black Zinc
20	M6 FW BZ	M6 Flat Washers Black Zinc
22	M6 FN	M6 Flange Nut
13	M8x20 BHCS BZ	M8x20 Button Head Cap Screw Black Zinc
13	M8 FW BZ	M8 Flat Washer Black Zinc

2	M6 x 20	M6 x 20 Hex Bolt, Gr8.8 zp
2	M6 FW	M6 Flat Washer
10	M8 FN	M8 Flange Nut
2	M10 x 30 BHCS	M10 x 30 Button Head Cap Screw ZP
2	M10 FW	M10 Flat Washer
5	M12x65	M12 x 65 Hex Bolt, GR 8.8 ZP
5	M12 FW	M12 Flat Washer
5	M12 FN	M12 Flange Nut
6	M8 x 30	M8 x 30 Hex Bolt, Gr8.8 ZP
6	M8 FW	M8 Flat Washer ZP

TOOLS REQUIRED

The following tools will be required to install the product.

Hand Tools	Power Tools	Workshop Equipment
10mm Spanner 13mm Spanner 16mm Spanner 17mm Spanner 18mm Spanner 19mm Spanner 4mm Allen Key 5mm Allen Key 10mm Socket 13mm Socket 16mm Socket 17mm Socket 18mm Socket Ratcheting Socket Wrench Flat head screw driver or Pry Tool Side Cutters Phillips head screw driver	Powder Drill	6 inch Rule Adhesive silicone (with caulking gun) Razor blade(box cutter)



<ol style="list-style-type: none"> 1. Remove 3 clips on either side of bumper near wheel holding wheel well trim to bumper. There is also a 4thet holding the wheel well trim to the body. 2. Repeat for other side 	<p style="text-align: center;">TOOLS REQUIRED</p> <p>Trim tool or flat blade screw driver</p>
	<p style="text-align: center;">FASTENERS</p> <p style="text-align: center;">Discard</p>



- 3. Remove 2 screws holding bumper to flare
- 4. Repeat for other side

TOOLS REQUIRED

8mm Socket or Spanner

FASTENERS

discard



5. Underneath front, remove 3 screws holding splash guard onto chassis

TOOLS REQUIRED

10mm socket

FASTENERS

Retain for later use



6. Peel edges of bumper just free from retaining clip at the edge under the flare.

TOOLS REQUIRED

FASTENERS



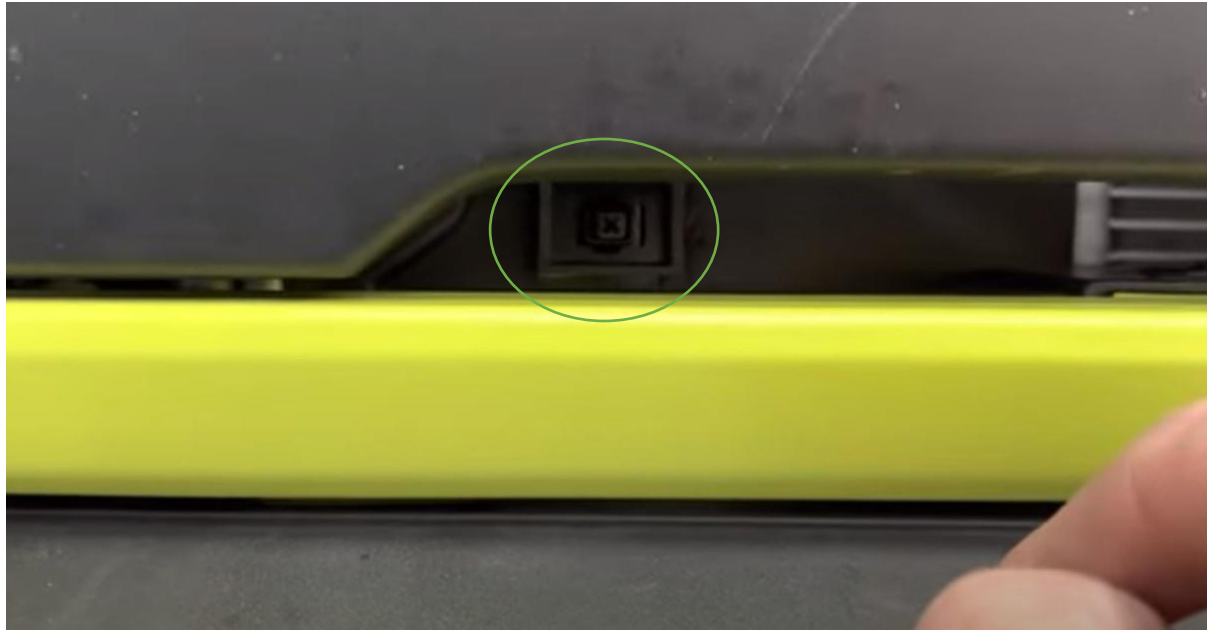
7. With bonnet open remove 3 x clips holding grill onto the body

TOOLS REQUIRED

Trim tool or Phillips head screwdriver

FASTENERS

Discard



8. On the lower part of the grill use a Phillips screwdriver and turn clips shown ¼ turn to release them. 2 clips present

TOOLS REQUIRED

Phillips head screwdriver

FASTENERS

Retain for reuse



9. Gently pull grill away from body enough that will allow you to disconnect the indicator loom. LHS of vehicle you should be able to reach in the bonnet area to do this before grill is removed

TOOLS REQUIRED

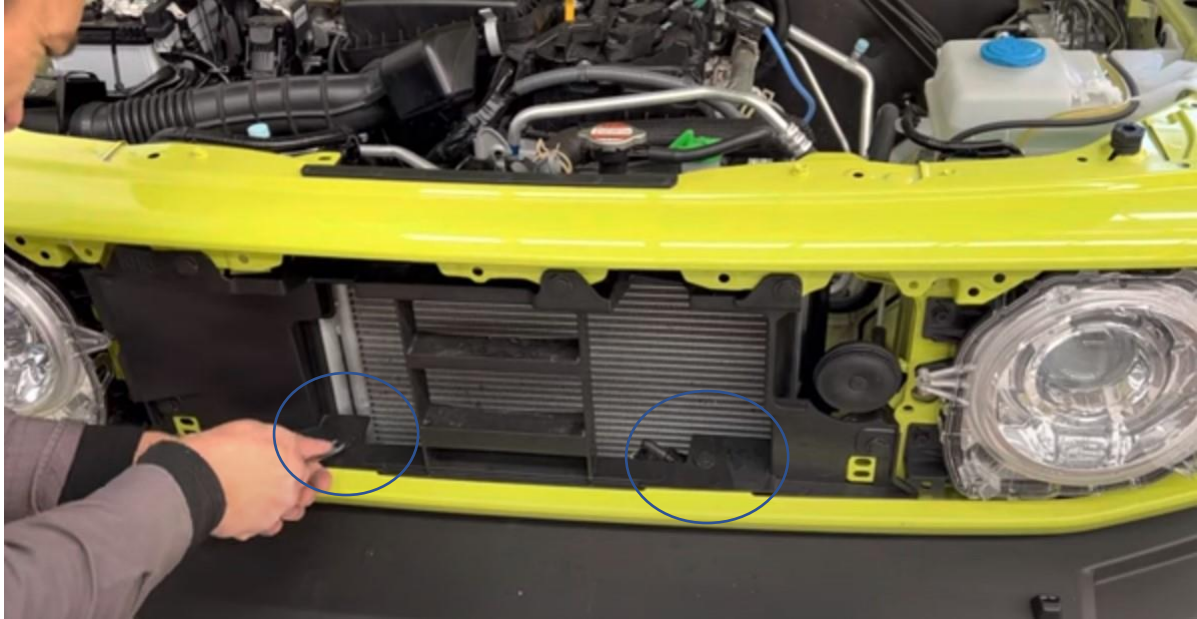
FASTENERS



10. With grill mostly off you can then do unhook the indicator wiring loom on the RHS

TOOLS REQUIRED

FASTENERS



11. Remove 2 clips shown

TOOLS REQUIRED

Trim tool or Phillips head
screwdriver

FASTENERS

Retain for reuse



12. Push trim shown out of the way to reveal an additional 4 clips, and remove them

TOOLS REQUIRED

Trim tool or Phillips head screwdriver

FASTENERS

Retain for reuse



- 13. Refit the grill using all but the last 4 clips you just removed in step 12
- 14. Plug in both indicators

TOOLS REQUIRED

FASTENERS



15. Gently pull the bumper away from the vehicle

TOOLS REQUIRED

FASTENERS



- 16. Unplug fog light wiring loom and head light washers.
- 17. Pull hose out of bumper, you will need to cut one cable tie, careful not to cut the hose.

TOOLS REQUIRED

Side cutters

FASTENERS



18. Remove Air guide which has 5 clips

TOOLS REQUIRED

Trim Tool
Or flat blade screwdriver

FASTENERS

Discard



19. Remove fog lights from bumper with Phillips head screwdriver.

TOOLS REQUIRED

Phillips head screw driver

FASTENERS

Discard



20. Unhook wiring loom with trim tool or screwdriver blade

TOOLS REQUIRED

Trim Tool
Or flat blade screwdriver

FASTENERS



21. Remove washer nozzles, a flat blade tool can help

TOOLS REQUIRED

Trim Tool
Or flat blade screwdriver

FASTENERS

M10x30
M10 FW
M10 FN

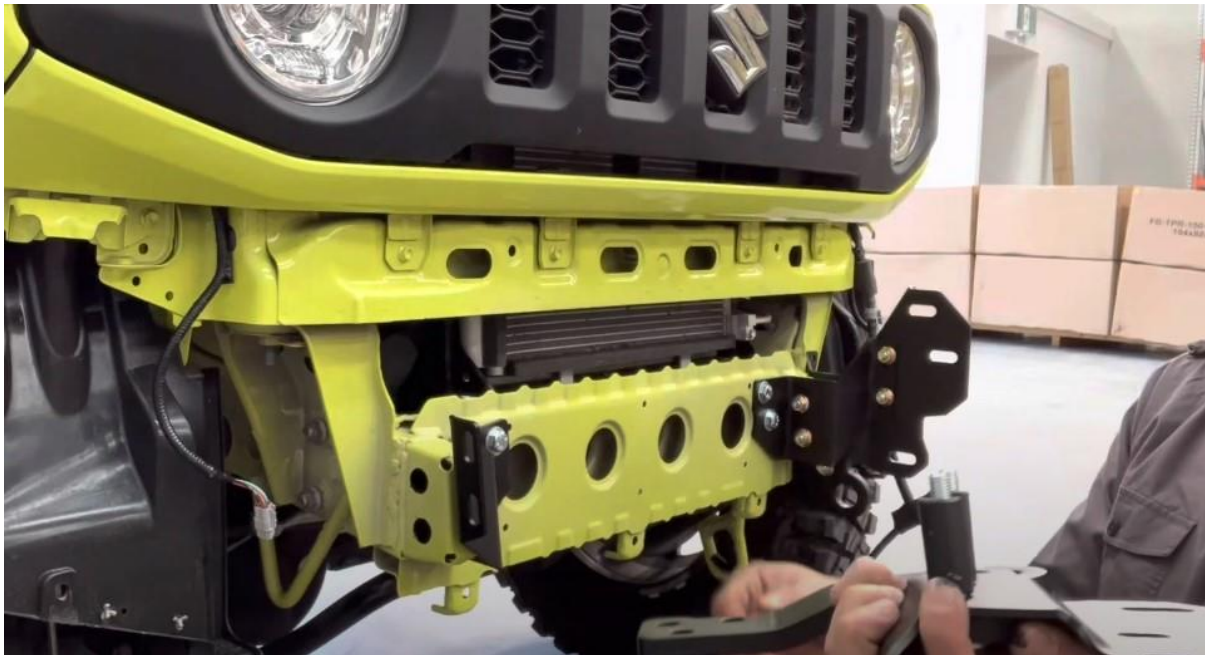


- 22. Using a step drill, drill out the outside of the chassis horns to 20mm-- Don't forget safety glasses
- 23. Drill the upper hole only to 10mm
- 24. Paint all drilled holes with paint pen

TOOLS REQUIRED

Powder drill, step drill that goes up to 20mm
Paint Pen

FASTENERS



25. Fit inner chassis bracket as shown, with M10 x 30 bolts, flat washer and a flange nut inside chassis through large hole. Leave hand tight.

TOOLS REQUIRED

FASTENERS



26. Doing a stack of parts, you'll take the M10 x 80 bolts, through flat washer, then tow hook, then outer chassis bracket, then crush tubes and put all of this through the large holes just drilled. Secure with flange nuts on the inside chassis bracket, and leave hand tight

TOOLS REQUIRED

FASTENERS

M10 x 80
M10 flat washer
M10 Flange nut
Crush tubes



27. Put a centre hole as shown, then remove outer chassis bracket an centre punch the marked hole

TOOLS REQUIRED

Centre punch

FASTENERS



28. Drill marked hole out to 10mm, feel free to use a smaller pilot drill first

TOOLS REQUIRED
Power drill
10mm drill bit

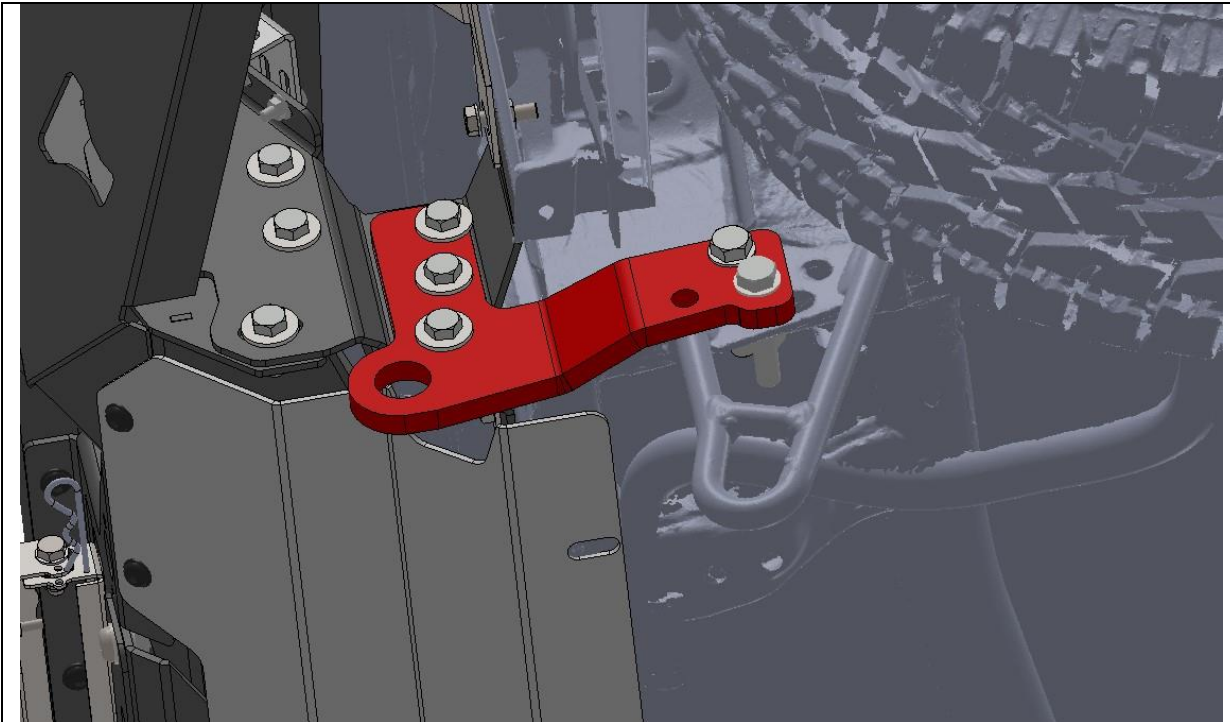
FASTENERS



- 29. Refit bracketry from step 26
- 30. Repeat for other side

TOOLS REQUIRED

FASTENERS



31. On LHS put M12 x 65 bolts through back end of tow hooks with M12 flat washers and flange nuts. Torque all bolts on this side

TOOLS REQUIRED

19mm socket and or spanner
16mm if AUS made bar or
17mm if made in Vietnam

FASTENERS

M12 x 65 hex
M12 FW
M12 FN



- 32. For RHS use small spacer clamp to go behind welded bar on chassis rail, and secure with 3 x M12 x 65 hex bolts, washers and flange nuts
- 33. Torque all bolts on this side

TOOLS REQUIRED

19mm socket and or spanner
16mm if AUS made bar or
17mm if made in Vietnam

FASTENERS

M12 x 65 hex
M12 FW
M12 FN



34. If fitting an integrated light bar, do so now as shown.

TOOLS REQUIRED

5mm Hex key, 10mm spanner

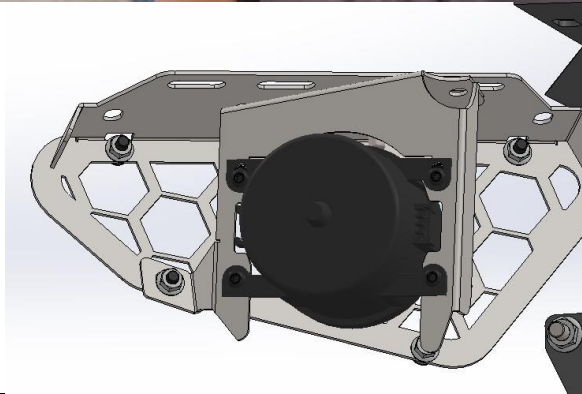
FASTENERS



35. Fit washer nozzles into new bar, just clip together

TOOLS REQUIRED

FASTENERS



- 36. Fit fog lights to light brackets and mesh panels. Use 4 M6 x 16 Black BHCS per light to bracket with black M6 washers and M6 flange nuts
- 37. Use 2 x M8x 30 Hex bolts, flat washers and flange nuts to mount light bracket onto mesh panel
- 38. Repeat for other side

TOOLS REQUIRED
4mm Hex key
13mm spanner

FASTENERS
M8 x 30 hex
M8 FW
M8 FN
M6 x 16 BHCS Blk
M6 FW Blk
M6 FN



- 39. Fit mesh panel with lights to bar and secure with 4 x M6 x 16 BHCS BLk, M6 FW and M6 FN
- 40. Repeat for other side

TOOLS REQUIRED

4mm Hex Key

FASTENERS

M6 x 16 BHCS Blk
M6 FW
M6 FN



41. If fitting a top hoop do so now with provided hardware, and fit the light

TOOLS REQUIRED

**16mm if AUS made bar or
17mm if made in Vietnam**

FASTENERS



42. Fit pan brace as shown with M6 hardware, 4 of each

TOOLS REQUIRED

4mm hex key

FASTENERS

M6 x 16 BHCS Blk
M6 FW
M6 FN



- 43. If fitting an ATV winch great job on choosing the correct winch for the size of your Jimny and skip ahead to step 47, if fitting a traditional winch you'll need to do it now.
- 44. Fit winch into cavity and secure with supplied bolts
- 45. The control box will need to be mounted off the winch either under the bonnet, on the top face of the bar or in the wing of the bull bar depending on its size. **NOTE THIS BAR IS ONLY RATED FOR A 8,000LBS WINCH**

TOOLS REQUIRED

Depends on what hardware comes with the winch

FASTENERS

Supplied with winch



46. Using a lifting table, trolley jack or a strong mate lift the bar and winch onto the vehicle and secure with M10 x 30 bolts, flat washers and Nyloc nuts

TOOLS REQUIRED

**16mm if AUS made bar or
17mm if made in Vietnam**

**FASTENERS
M10 x 30 Hex bolts
M10 FW
M10 NY**



47. Using a lifting trolley, trolley jack or mate lift bar onto the mounts and secure with M10 x 30 bolts, flat washers and Nyloc nuts

TOOLS REQUIRED
16mm if AUS made bar or
17mm if made in Vietnam

FASTENERS

M10 x 30 Hex bolts
M10 FW
M10 NY



48. Using a sharp blade trim the wheel well liner to suit the bar. Basically cut it straight along the flare line, also trim the retainers under the flare to allow the bar to sit higher

TOOLS REQUIRED

Box cutter



FASTENERS

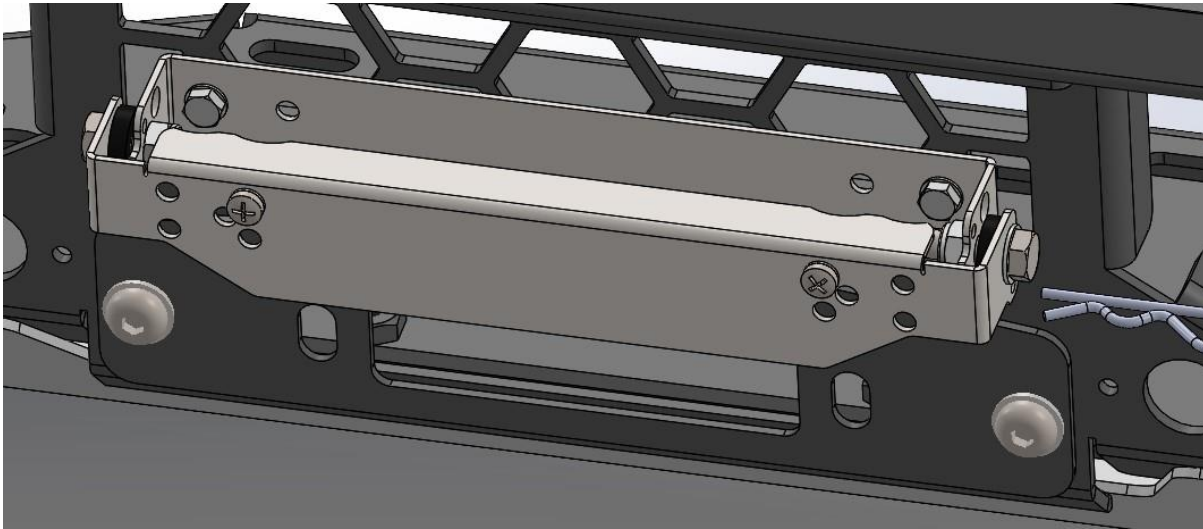


- 49. If fitting an ATV winch do so now
- 50. Lift the winch into place and secure supplied hardware
- 51. Run wires to battery

TOOLS REQUIRED

Depends on what hardware comes with the winch

FASTENERS



- 52. Fit number plate flips as shown with supplied hardware to centre mesh panel
- 53. Fit winch plate as shown for ATV winches

TOOLS REQUIRED
6mm hex key
10mm spanner

FASTENERS
M6 Hex bolt
M6 fw
M6 fn
M10 x 30 BHCS
M10 fw
M10 FN



54. Remove number plate from factory bumper and fit to number plate flip

TOOLS REQUIRED

Flat head screw driver

FASTENERS

M6 Cage nuts (10)



55. Install centre mesh plate with M8 x 16 BHCS blk and flat washers, x 3 in top gusset. Leave bottom bolts off for now

TOOLS REQUIRED

5mm hex key

FASTENERS

M8 x 16 BHCS blk
M8 fw



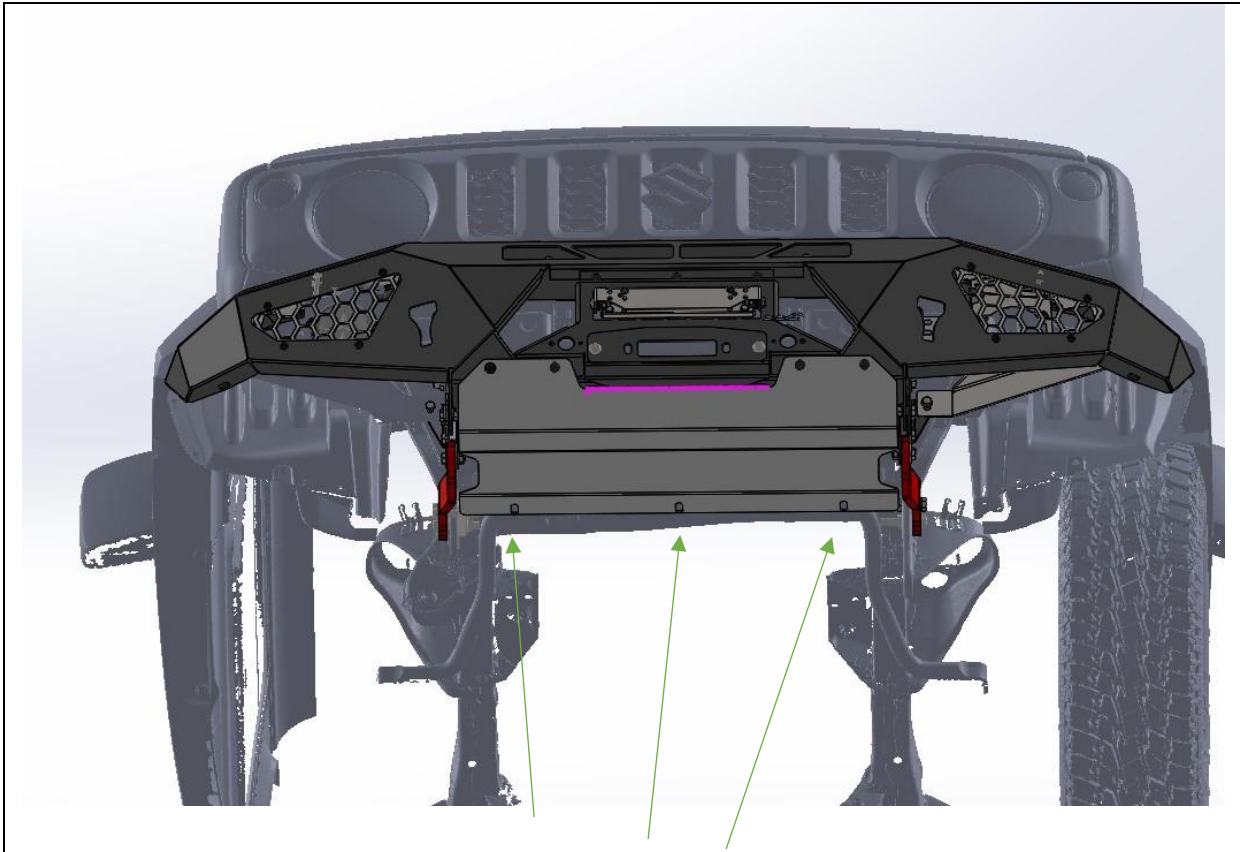
- 56. Fit bash plate now using 4 x M8x 20 BHCS blk, and flat washers through bash plate, through mesh panel and into bar
- 57. Fit winch fairlead

TOOLS REQUIRED

5mm Allen key

FASTENERS

M8 x 20 BHCS blk
M8 fw



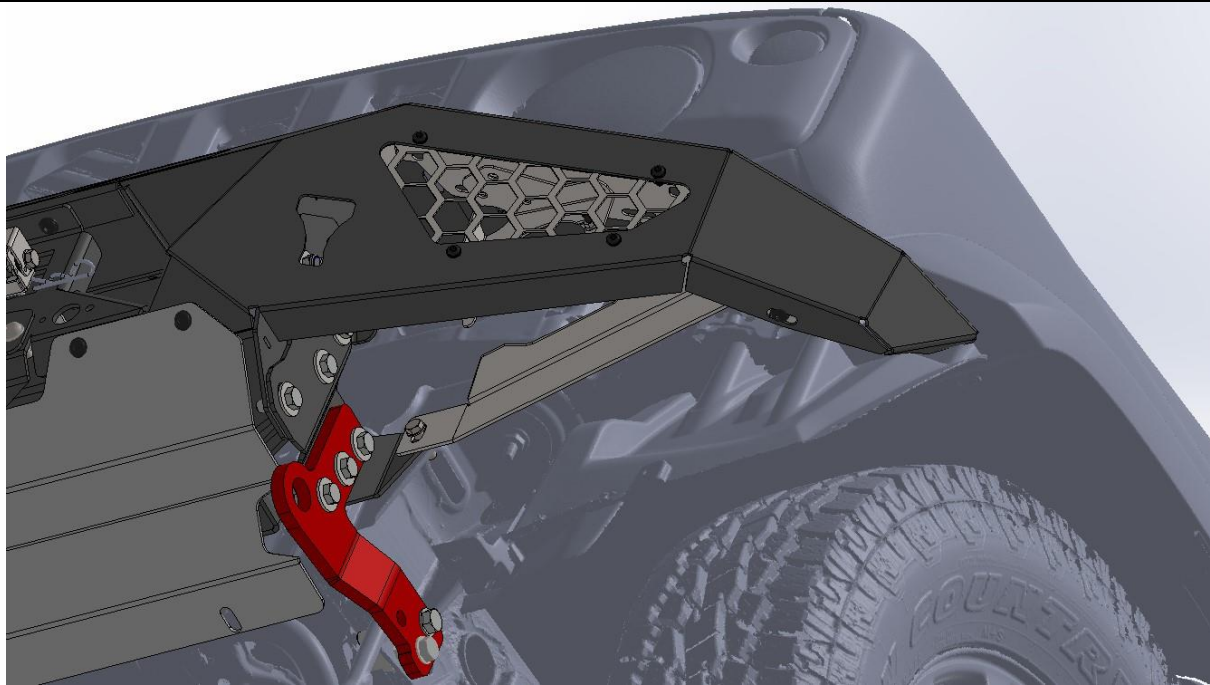
58. Use factory screws into bottom of bash plate into chassis

TOOLS REQUIRED

10mm spanner

FASTENERS

Factory M6 screws



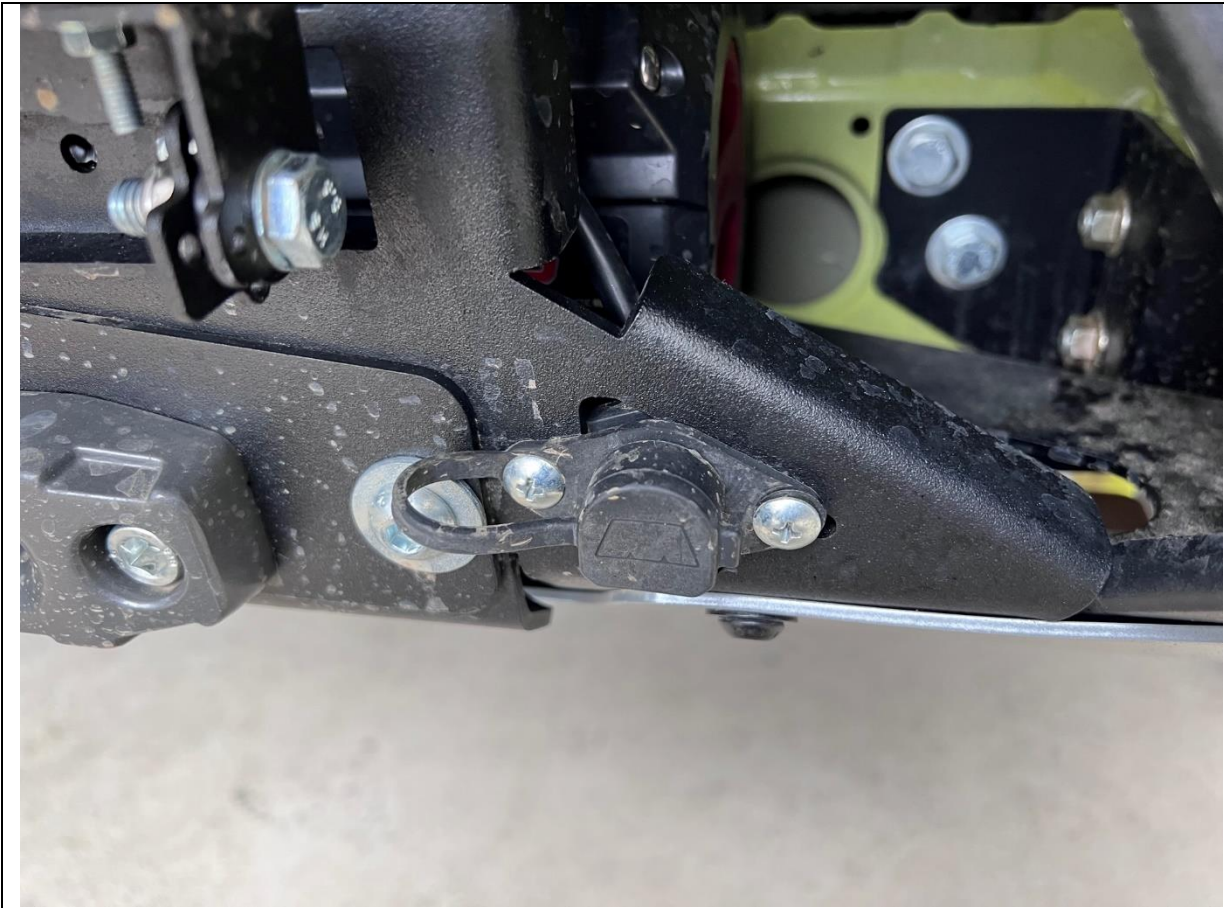
59. Fit wing supports as shown with M8 hardware. Hex bolt on the inside, and button head cap screws on the wing

TOOLS REQUIRED

13mm socket
5mm hex key

FASTENERS

M8 x 30
M8 FW
M8 FN
M8 x 20 BHCS blk
M8 FW blk



- 60. If fitting Warn Axon winch, fit plug as shown to front of mesh panel
- 61. If non ATV winch you'll need to mount the control box under the bonnet, on the top face of the bar or under a wing.

TOOLS REQUIRED

FASTENERS



- 62. Fit the logo plate on the front of the bar
- 63. Fit compliance plate under bash plate
- 64. You're done

TOOLS REQUIRED

FASTENERS