



Toyota Hilux N80 GR Sport MY2024 on Predator & Toro Front Bar

IMPORTANT! – READ BEFORE INSTALLATION

- When installed in accordance with these instructions, the front protection bar does not affect the operation of the vehicles SRS airbags.
- This product must be installed exactly as per these instructions using only hardware supplied.
- Take a few moments to read instructions thoroughly before beginning work.
- In the event of damage to any bar component please contact OFFROAD ANIMAL to arrange repair/replacement of components.
- Do not use this product for any vehicle make or model other than that specified on these instructions.
- Do not remove labels from this product.
- This product and its fixings must not be modified in any way unless stated in these fitting instructions.
- The installation of this product is recommended for trained personnel.
- These instructions are correct at time of publication. OFFROAD ANIMAL cannot be held responsible for the impact of any changes subsequently made by the vehicle manufacturer. If you find something has changed please contact us to let us know!
- During installation it is the duty of the installer to check correct operation/clearances of all components.
- If Instructions are to be printed for reference in the workshop, it is recommended that they are printed in colour, for best legibility.

PARTS LISTING

IMPORTANT: Check all parts are present before beginning work! Contact OFFROAD ANIMAL if something is missing.

Main Parts – In the Box

Qty	Part Number	Description	Image
1	FB-THL-N8G-24-PR-ASM1	Hilux N80 GR Sport Predator Bar Weldment	
OR			
1	FB-THL-N8G-24-TOR-ASM1	Hilux N80 GR Sport Toro Bar Weldment	
1	FB-THL-N80-15-PR-ASM2L	Hilux Chassis Mount Assy	
1	FB-THL-N80-15-PR-ASM2R	Hilux Chassis Mount Assy	
1	B-0152L	Hilux Front Mount - Chassis Brace	
1	B-0152R	Hilux Front Mount - Chassis Brace	

1	M-0005	Hilux Mesh - Center Fairlead Support	
1	M-0006L	Hilux Mesh Infill LHS	
1	M-0006L	Hilux Mesh Infill RHS	
1	NPF-COM-SM-ASMO	Number plate flip asm Small	
1	U-0009	Hilux N80 Bash Plate	
1	U-0057L	Hilux Front Bar - Side Underpanel	
1	U-0057R	Hilux Front Bar - Side Underpanel	
1	M-0002L	Light Cover Mesh	
1	M-0002R	Light Cover Mesh	

1	B-0514L	Hilux 21+ Style Fog Lamp Bracket LHS	
1	B-0514R	Hilux 21+ Style Fog Lamp Bracket RHS	
1	B-1136	Hilux N80 GR Sport Grille Support Bracket	
2	P-0355	Hilux N80 GR Sport Grille Support Tab	
1	B-1137	Hilux N80 Pan Brace	
1	B-0886L	Hilux N80 Headlight Corner Infill	
1	B-0886R	Hilux N80 Headlight Corner Infill	
1	TK-PSENS-4	3M VHB Tape 5952, Parking sensor kit 4 sensors, 8x Square Pad	No Image
3	TK-THL-N80	3M VHB Tape 5952, 2x Pad 25x6mm	No Image

Small Parts – Contained in Small Parts Kit Bag

Qty	Part Number	Description
34	M6 FLAT WASHER BLACK ZINC	M6 Flat Washer, 12x6.1x1, ISO4042 ZnNi BLACK PASSIVATED FINISH
24	M6 FLANGE NUT	Flange Nut, M6x1 G8.8 ZP
34	M6x16 BHCS BLACK ZINC	SCREW, BUTTON HEAD CAP, M6X16X1 GR12.9, ISO4042 ZnNi BLACK PASSIVATED FINISH
8	M8 FLAT WASHER	M8 FW
14	M8 FLANGE NUT	Flange Nut, M8x1.25 G8.8 ZP
8	M8X20	Bolt Hex, M8X20X1.25, GR8.8 ZP
12	M10 Flat Washer	M10 FW
12	M10 FLANGE NUT	Flange Nut, M10x1.5 G8.8 ZP
10	M10 x 30	Bolt Hex, M10X30x[1.5], GR8.8 ZP
6	M12 FLAT WASHER	M12 FW
2	M12X30X1.25	Bolt Hex, M12X30x1.25, GR8.8 ZP
4	M12X30	Bolt Hex, M12X30x1.75, GR8.8 ZP
2	NP-THL-N80-15- PR	Nut Plate - Hilux Predator
2	M10X30 BHCS	SCREW, BUTTON HEAD CAP, M10X30X1.5 GR12.9 ZP
8	M8 FLAT WASHER- BLACK ZINC	M8 FLAT WASHER, 16.5x8.4x1.2, ISO4042 ZnNi BLACK PASSIVATED FINISH
6	M8 X 20 BHCS BLACK ZINC	SCREW, BUTTON HEAD CAP, M8X20X1.25, ISO4042 ZnNi BLACK PASSIVATED FINISH
2	M8 X 16 BHCS BZP	SCREW, BUTTON HEAD CAP, M8X16X1.25 GR12.9, ISO4042 ZnNi BLACK PASSIVATED FINISH
10	M6CN3MM	CAGE NUT M6x2.6-3.5
16	M12 FW LHD	M12 FW Large Heavy Duty
8	M12 Nyloc nut	M12 NYLOC NUT
8	M12X40	Bolt Hex, M12X40X1.75, GR8.8 ZP
1	M6 Mud Guard Washer	ID 0.25IN X OD 1IN
2	M6 FLAT WASHER	M6 FW
2	M6 X 16 HEX	M6X16 HEX BOLT, ZP, 8.8

Toro Bars Only – Additional Parts

Qty	Part Number	Description
1	B-0631L	Hilux Toro - Antenna mount bracket
1	B-0631R	Hilux Toro - Antenna mount bracket
8	M8 FLAT WASHER- BLACK ZINC	M8 FLAT WASHER, 16.5x8.4x1.2, IS04042 ZnNi BLACK PASSIVATED FINISH
6	M8 X 20 BHCS BLACK ZINC	SCREW, BUTTON HEAD CAP, M8X20x1.25, IS04042 ZnNi BLACK PASSIVATED FINISH

TOOLS REQUIRED

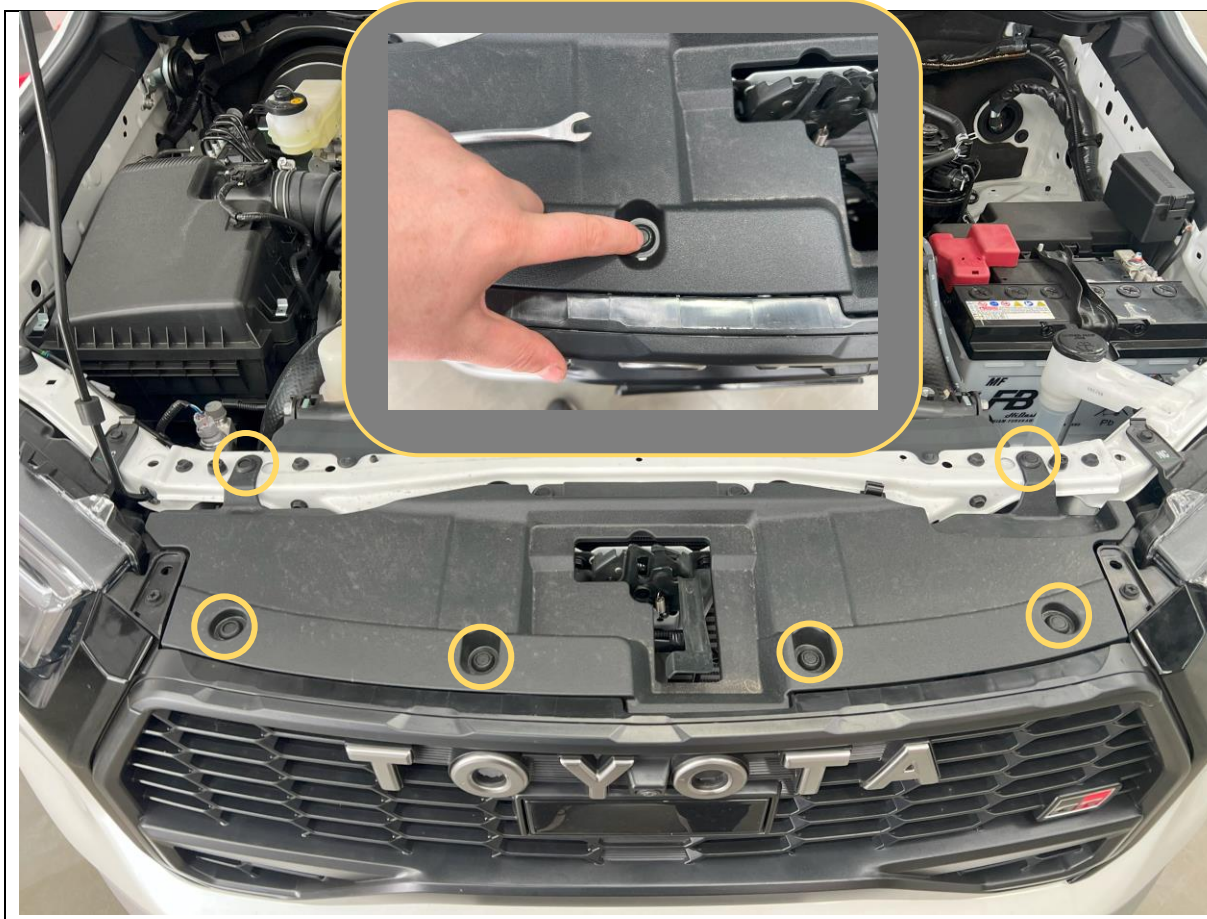
The following tools will be required to install the product.

Hand Tools	Power Tools	Workshop Equipment
Metric Socket Set 8-19mm Socket Extension Bar Metric Spanner Set 10-19mm Hex (Allen) Key Set 4-8mm Trim Puller Tool Flat Blade Screwdriver set Phillips Head Screwdriver set Utility Knife	Electric/Air Impact Driver (Optional) Air Hacksaw or Angle grinder. Oscillating multi tool & Plastic blade.	Panel Stand or Soft Blanket Automotive Adhesive Sealant. Glue Removal Solvents

WORKSHOP SAFETY

It is the responsibility of the installer to always complete works in a safe manner. Make sure the following safety equipment is available and precautions are observed whilst fitting this product.

<p>Hearing Protection</p> 	<p>Always wear ear protection when using power tools.</p>
<p>Eye Protection</p> 	<p>Ensure eye protection is always worn when cutting or drilling.</p>
<p>Manual Handling</p> 	<p>Do not attempt to lift bar assemblies or rock sliders on your own.</p> <p>Always use two people to lift or use mechanical Lifting aid such as hydraulic lifting trolley.</p>
<p>Vehicle Support</p> 	<p>Always ensure vehicle is properly supported when working on it. Do not attempt to fit products whilst suspension work is being carried out. Do not work under a vehicle supported only by a jack.</p>



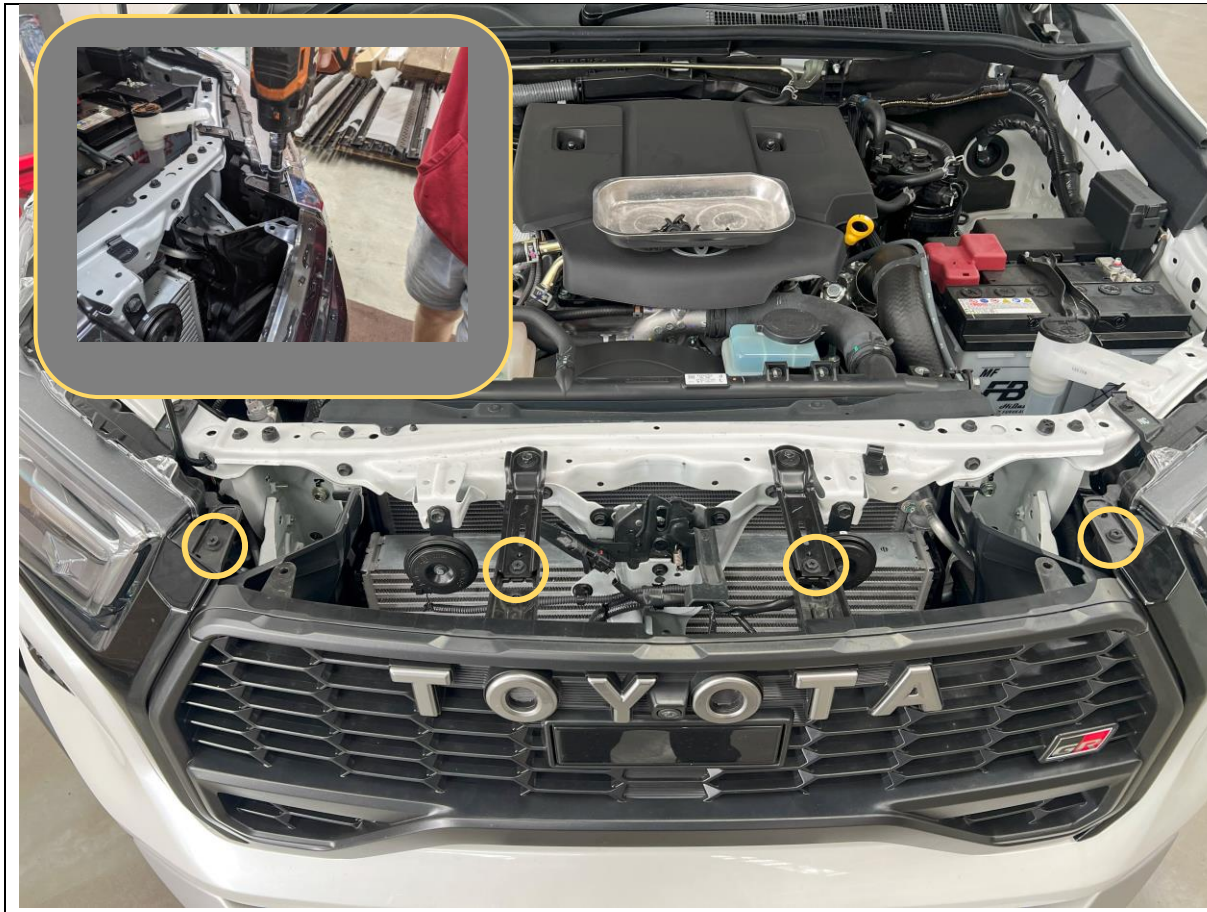
1. Remove the Radiator shroud by removing the 6x clips securing it to the grille and cross member.
2. Push down on the center of the clips to release then remove with trim tool.

TOOLS REQUIRED

Trim Tool

FASTENERS

Push Center Clips



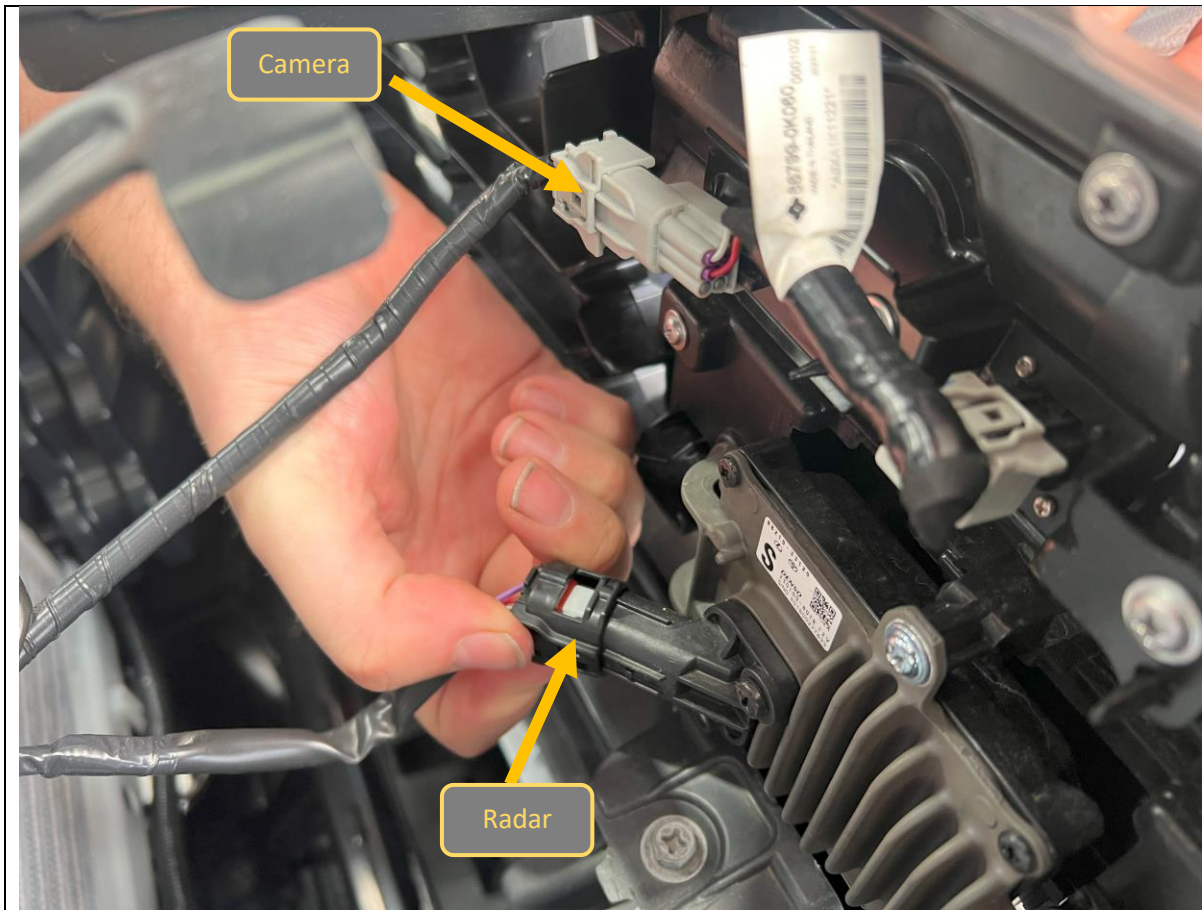
3. Remove the 4x 10mm Head screws securing the top of the grille
4. Retain fasteners for re fitment.

TOOLS REQUIRED

10mm Socket / Spanner

FASTENERS

10mm Head Screws



5. Unplug the radar sensor module wiring connector, located on the back of the radar sensor.
6. Unplug the Front Camera wiring connector, located on the back of the Camera bracket.

TOOLS REQUIRED

FASTENERS

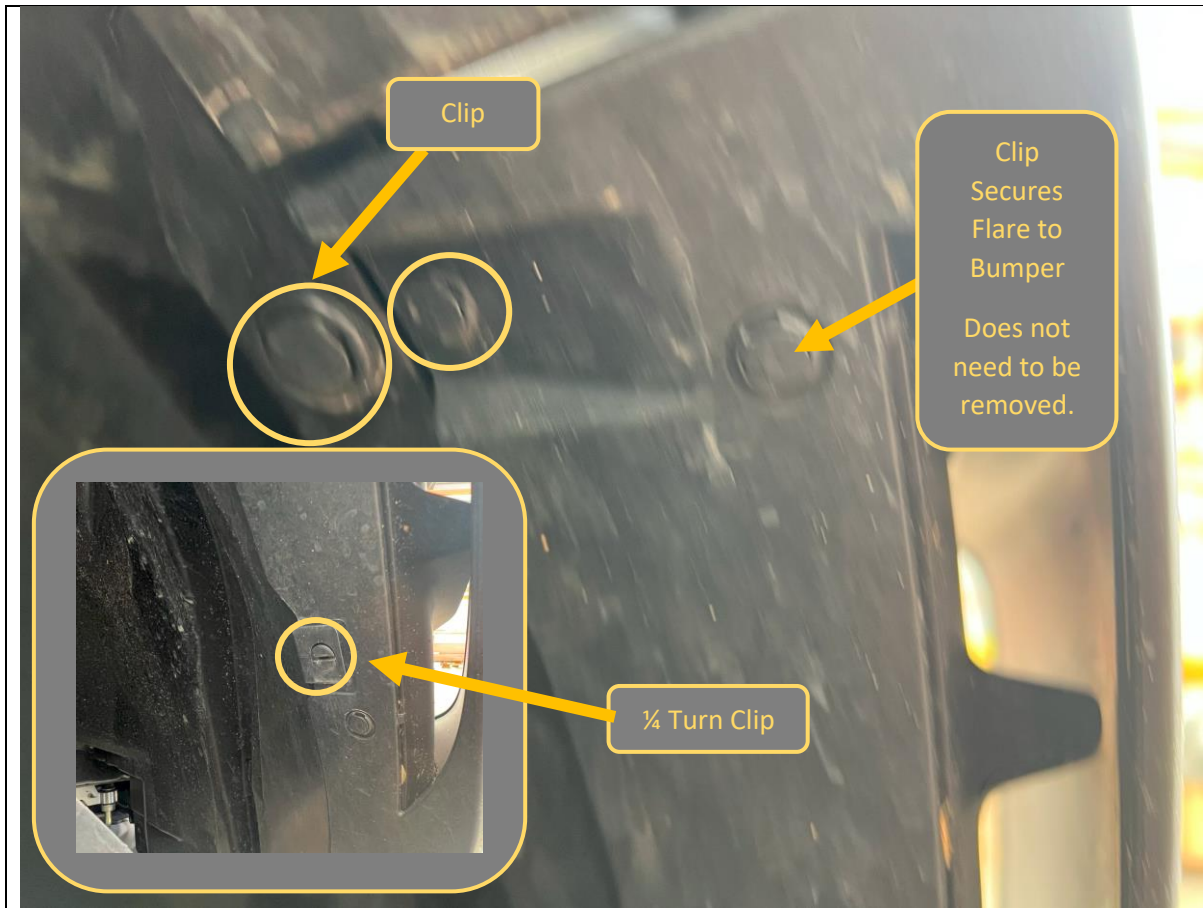


7. Using a rag to protect the surface, carefully pry the corners of the gloss black grille trim to release the clips.
8. Pull straight forward to release the clips and remove trim from the grille / bumper.
9. Repeat for the other side of the vehicle.

TOOLS REQUIRED

Trim Tool
Soft Rag

FASTENERS



10. Remove the clips securing the bumper to the inner wheel arch liner.
11. The top clip is a center release type. Pry up the center section to unlock then remove.
12. The lower clip is a 1/4 turn type. Rotate with large flat head screwdriver to release.

TOOLS REQUIRED
Trim Tool
Flat head screwdriver

FASTENERS

Factory Clip and Screw



13. Remove the 3x Screws securing bottom corner of bumper to inner wheel arch liner with 10mm socket or large Phillips screwdriver.

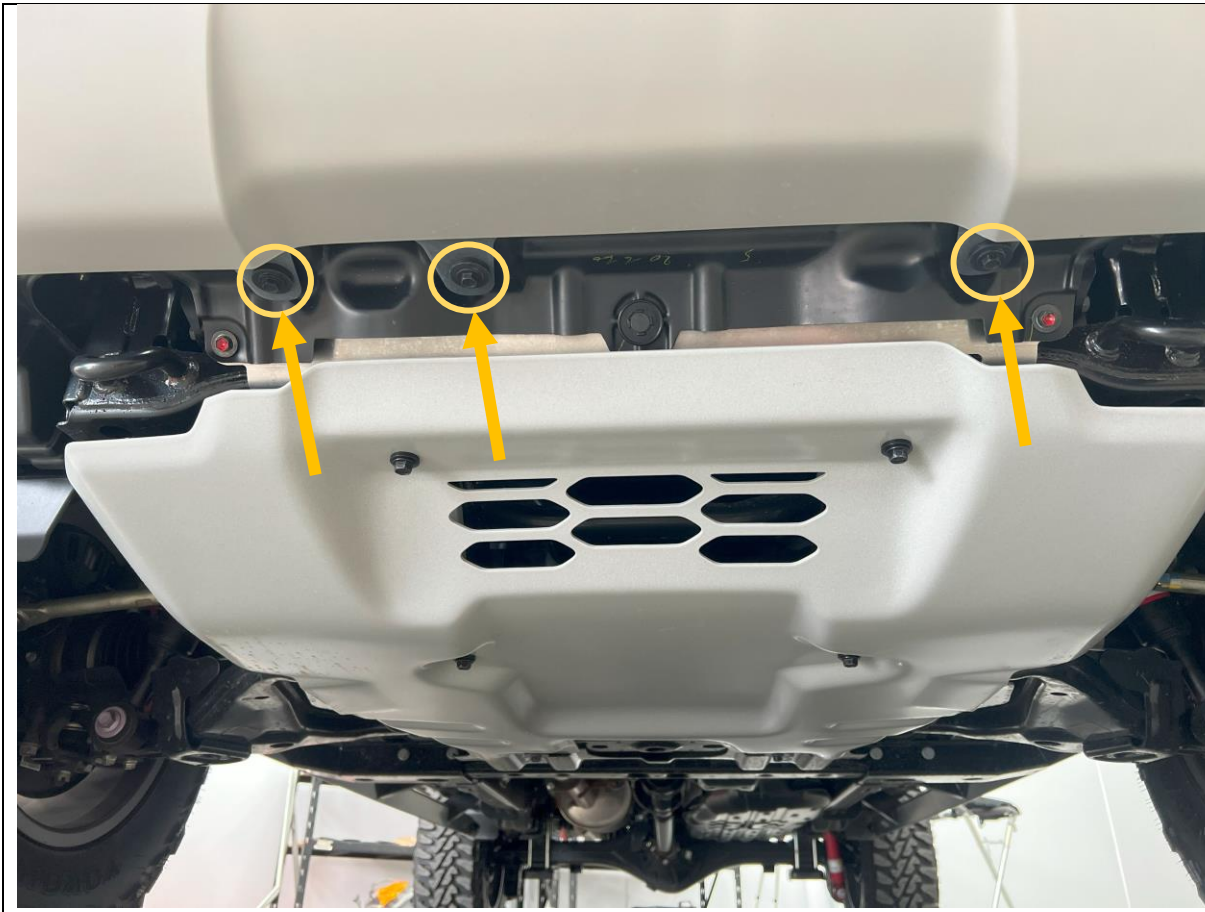
14. Complete on both sides of Vehicle

TOOLS REQUIRED

Trim Tool

FASTENERS

Factory Clips



15. Remove the 3x Factory Screws securing bottom center section of bumper to inner wheel arch liner. Use 10mm socket / spanner.

TOOLS REQUIRED

10mm Socket / Spanner

FASTENERS

Factory Screws



- 16. Remove the Clips securing the bottom of the bumper to the wheel arch liners.
- 17. Complete on both sides of the vehicle.

TOOLS REQUIRED

10mm Socket / Spanner

FASTENERS

Factory Screws



18. Remove the grille, by firmly pulling away from the bumper,

TOOLS REQUIRED

FASTENERS



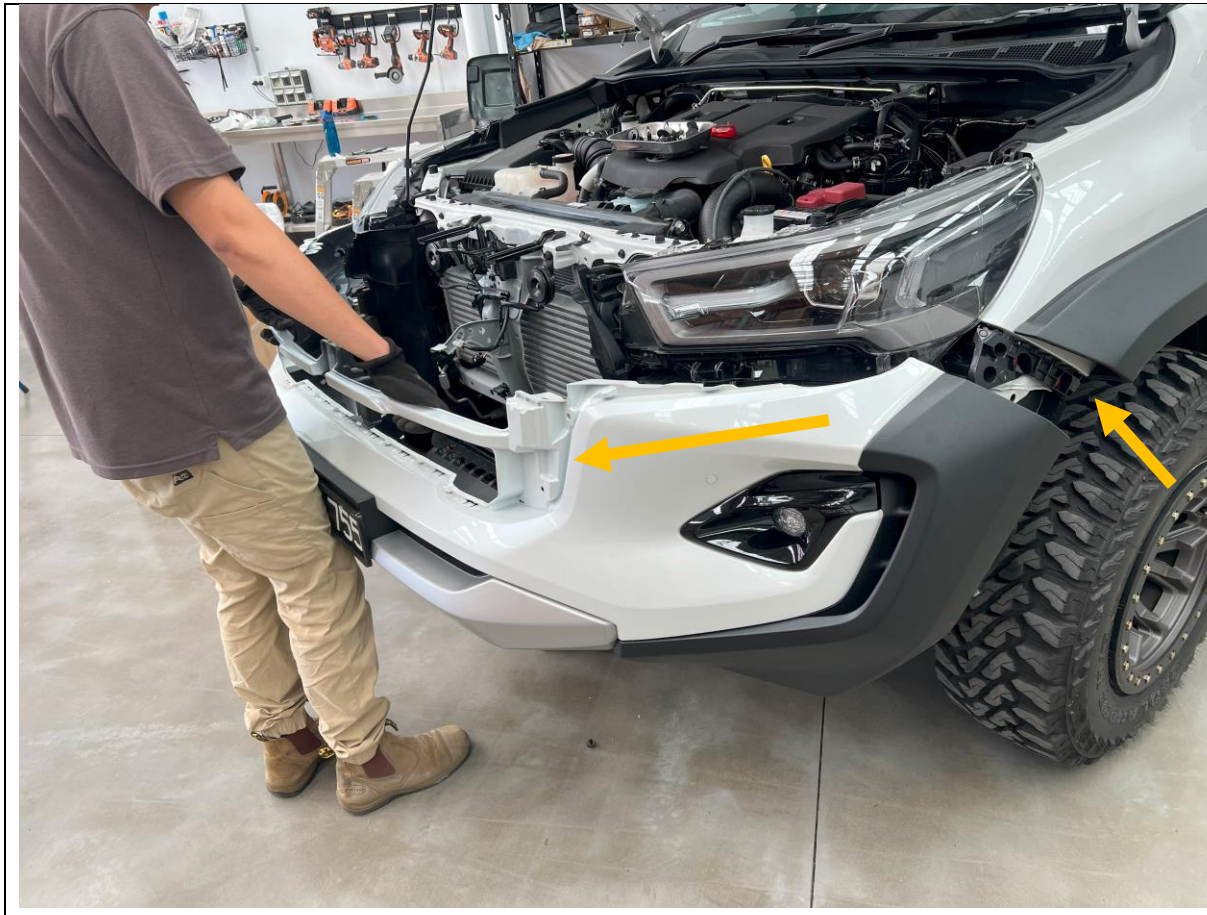
19. Remove the 3x 10mm Head/Phillips screws securing the bumper to crossmember.

These screws are located on the edge near the headlights behind the grille, and in the center

TOOLS REQUIRED

10mm Socket / Spanner

FASTENERS



20. Remove the bumper. Start by pulling from the outside where the bumper meets the wheel arch and work towards the center from both sides.

TOOLS REQUIRED

FASTENERS



21. With assistance once the bumper is loose, unplug and release the parking sensor and fog light harnesses.
22. It is easiest to remove the sensor from the bumper by releasing the clips on back side then pushing sensor through the bumper, leaving it hanging on the cable.
23. This needs to be done on both sides of the vehicle.
24. Once bumper is removed set aside on soft non marking surface or panel stand.

TOOLS REQUIRED

FASTENERS



- 25. Remove the front bumper support plastic fasteners using trim tool and Phillips screwdriver to pry whilst loosening as shown.
- 26. Remove the forward bolt using 10mm socket.
- 27. Remove the bumper supports using a trim tool.
- 28. Complete on both sides of the vehicle.

TOOLS REQUIRED
Trim Tool
Phillips Screwdriver
10mm socket

FASTENERS



29. Replace the forward bolt to re-secure the headlight to the wing.

30. Complete on both sides of the vehicle

TOOLS REQUIRED
10mm Socket

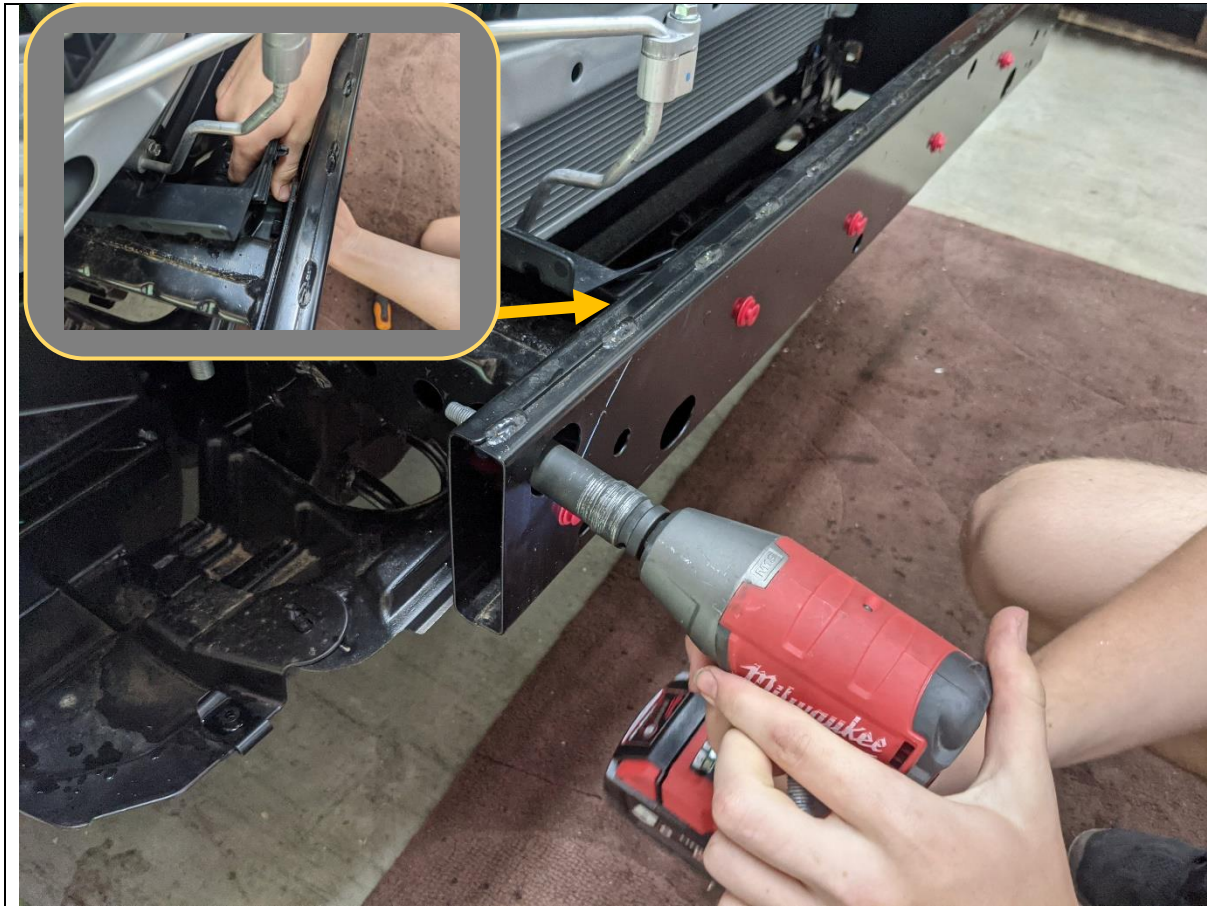
FASTENERS



31. Remove the plastic cover from the impact beam by strongly pulling in the direction shown to release it from the clips

TOOLS REQUIRED

FASTENERS



- 32. Remove the impact beam by removing the 4x Factory flange bolts securing it to the chassis rail
- 33. Release plastic clips on behind the impact beam in the air guides.

TOOLS REQUIRED

15mm Socket
Trim Tool

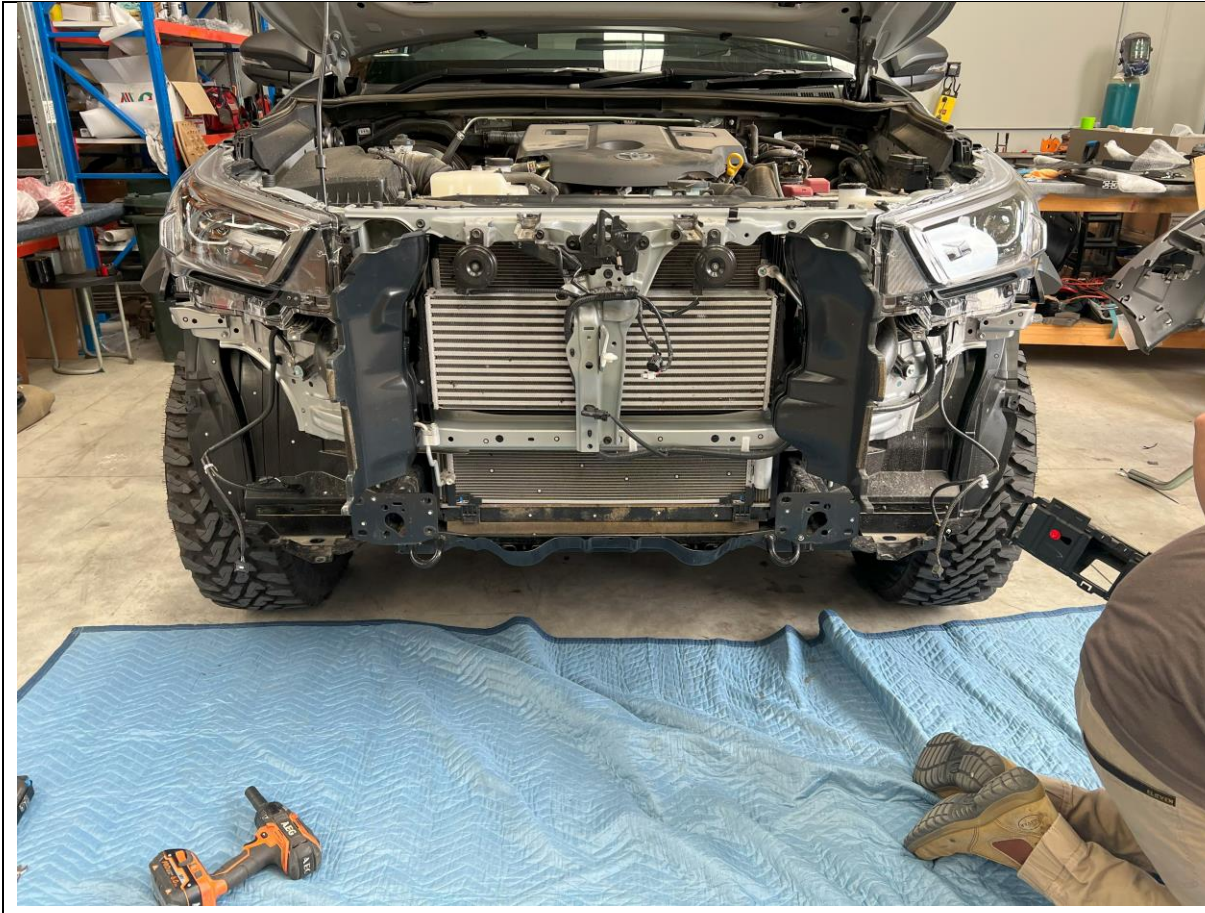
FASTENERS



34. Take impact beam off car and discard.

TOOLS REQUIRED

FASTENERS



- 35. Vehicle chassis rails should now be totally exposed as shown.
- 36. For light colored vehicles it is a good idea to paint the exposed panels beneath the headlight black, to ensure neat appearance once bar is fitted.

TOOLS REQUIRED

FASTENERS



37. Mark air guide on Right hand side of vehicle as shown in the above image.

38. Remove air guide from vehicle by releasing the 3x clips holding it to the chassis

TOOLS REQUIRED

Paint Marker

FASTENERS

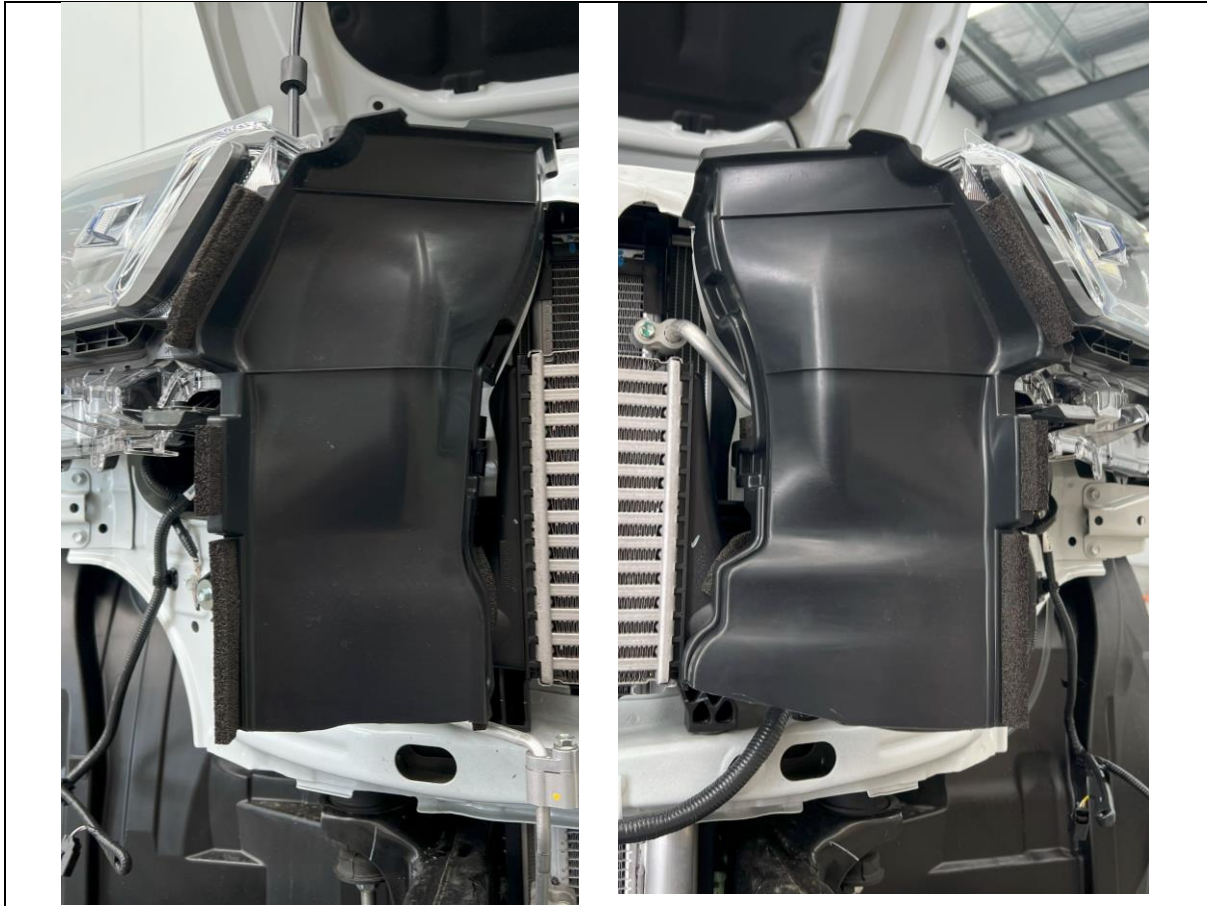


- 39. Mark air guide on Left hand side of vehicle as shown in the above image.
- 40. Remove air guide from vehicle by releasing the 3x clips holding it to the chassis

TOOLS REQUIRED

Paint Marker

FASTENERS



41. Trim the air guides along the lines marked, using a sharp utility knife or air hacksaw.

42. Re-Fit the top half of the air guides trimmed to the vehicle,

TOOLS REQUIRED
Utility Knife

FASTENERS



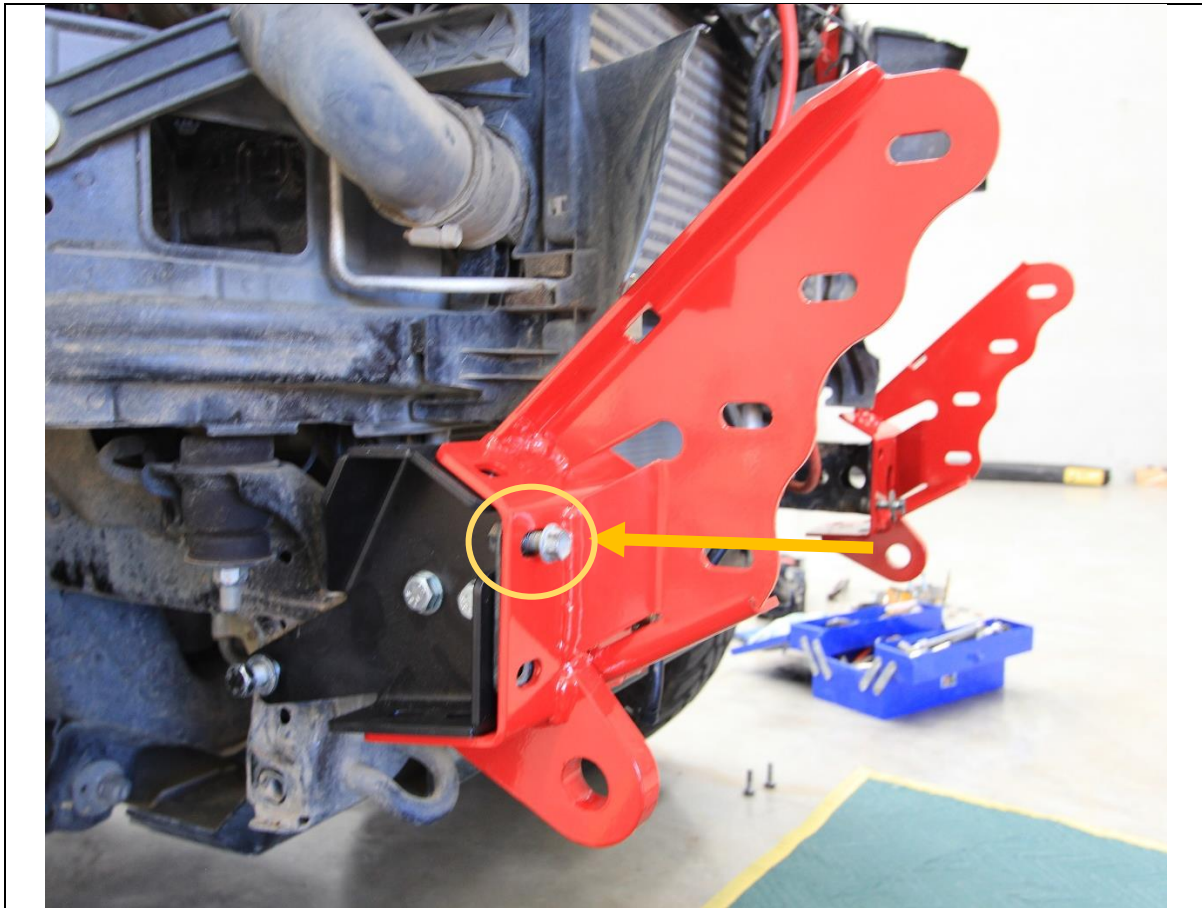
43. Take the chassis brace and fit loosely to the threaded M12 Fine pitch point in chassis, using M12x30x1.25 Bolt and flat washer.
44. Insert the Nut Plate into the chassis rail through the opening on the front of the chassis.
45. Secure the nut plate with M12x30 Standard pitch bolts and flat washers through the holes shown. Leave finger tight at this stage.
46. Repeat for other side of vehicle.

TOOLS REQUIRED

FASTENERS

- 1x M12x30x1.25p Bolt
- 2x M12x30x1.75p Bolt
- 3x M12 Flat washer.

PER SIDE

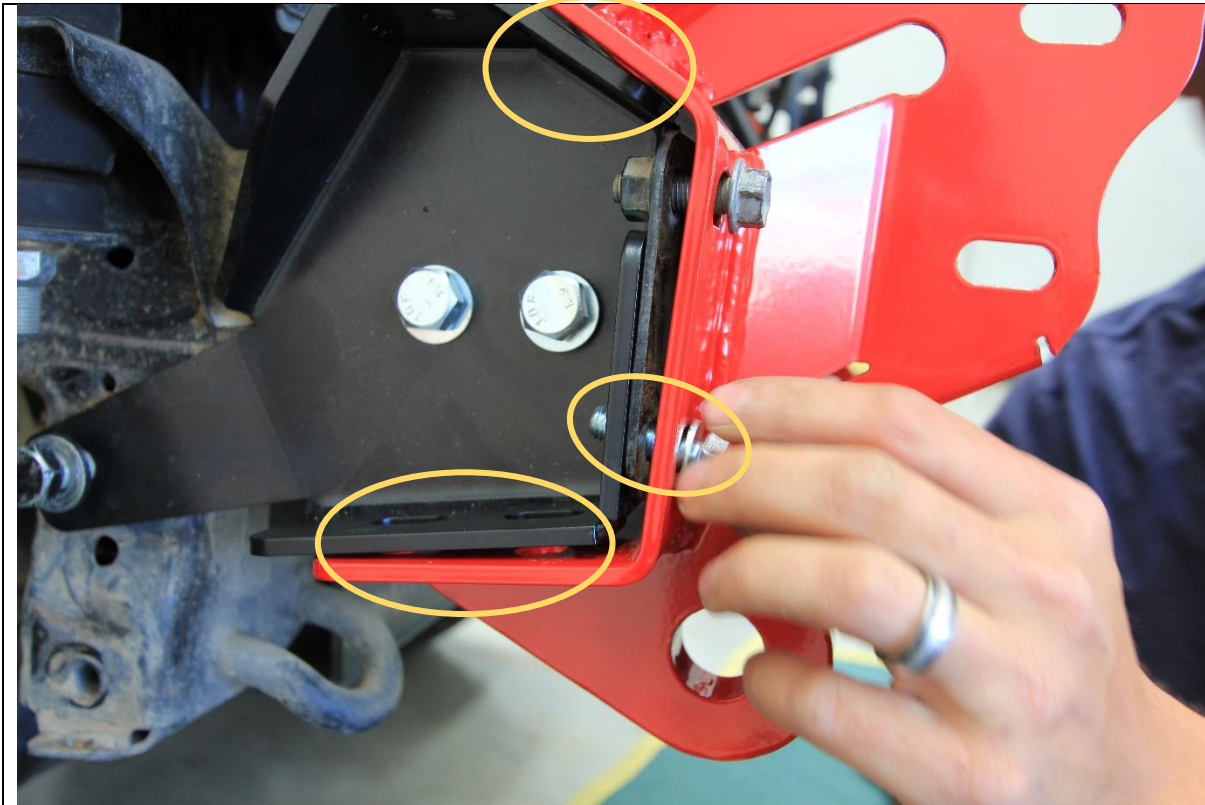


- 47. Fit the impact assembly to the end of the chassis rail.
- 48. Secure finger tight with the original M10 bolts in the threaded inserts in chassis.
- 49. Repeat for other side of vehicle

TOOLS REQUIRED

FASTENERS

2x Factory M10 flange bolt
per side.



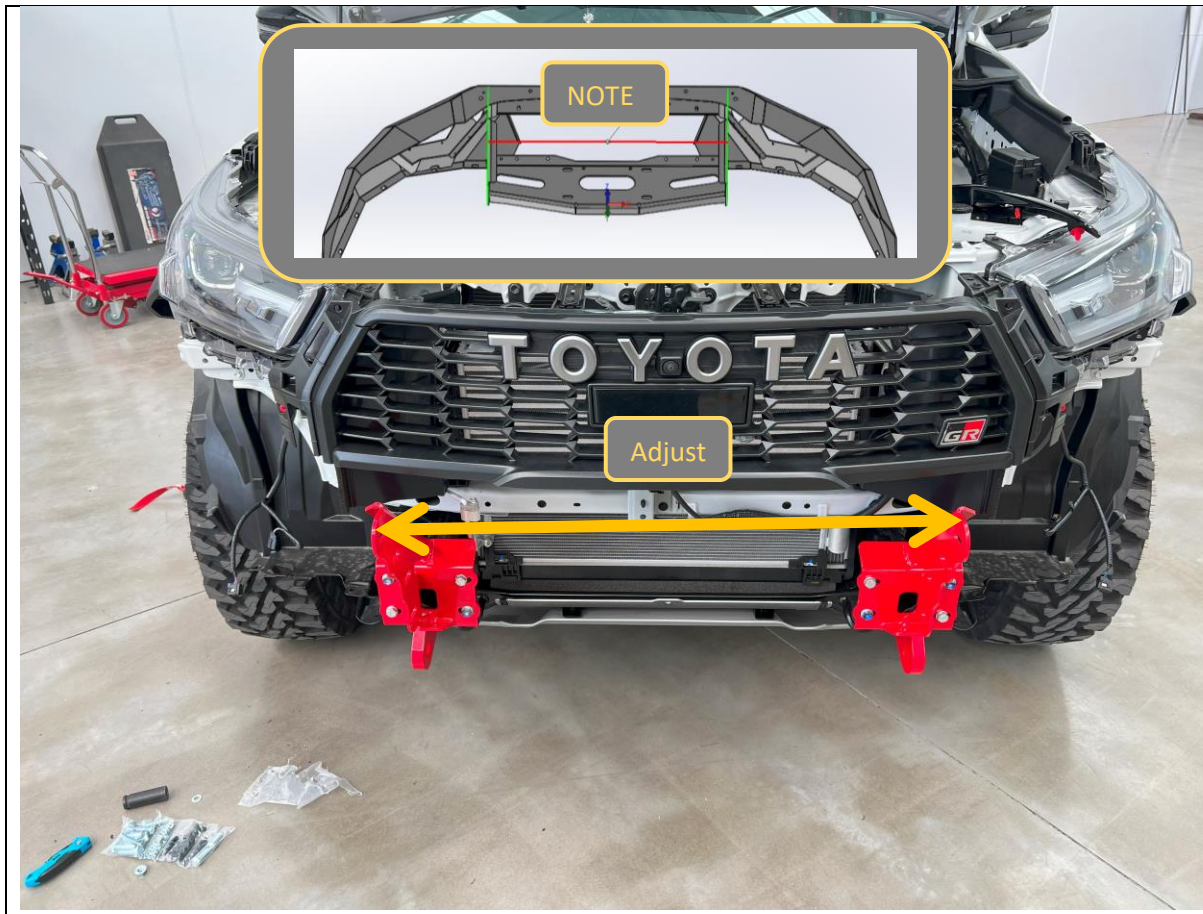
- 50. Fit remaining bolts to the impact assembly. 2x M10x30 Bolts, 4x Flat washers and 2x Nyloc nuts to front face.
- 51. Fit 2x M10x30 Bolts, 4x Flat washers and 2x Nyloc nuts to Bottom face.
- 52. Fit 1x M10x30 Bolt, 2x Flat washers and 1x Nyloc nuts to Top face.

TOOLS REQUIRED

FASTENERS

5x M10x30 Bolt
10x M10 Flat washer
5x Nyloc Nut

per side.



53. Measure the distance between the outside faces of the uprights on the bar. Note this distance

Bar uprights _____mm

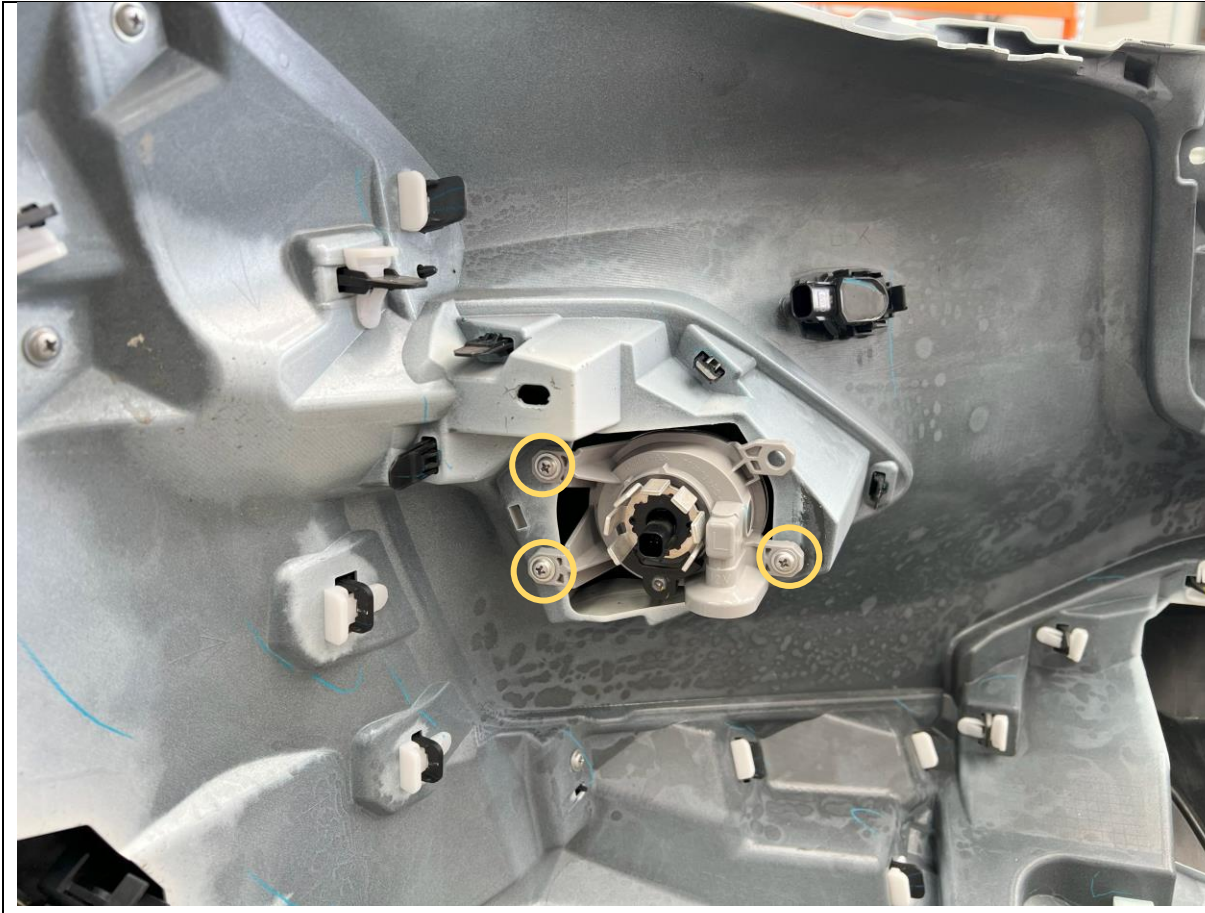
54. Adjust the distance between the impact assemblies to be approx. 1-2mm greater than the upright distance on the bar.

55. Tighten bolts on the impact assemblies and re-check distance. Loosen and adjust as required until the distance between mount when mounts are tight is correct.

TOOLS REQUIRED

- Tape measure
- 16mm Spanner
- 16mm Socket

FASTENERS



56. Remove the 3x Screws securing the fog lights to the bumper, then remove the fog light from the bumper

TOOLS REQUIRED
Screwdriver

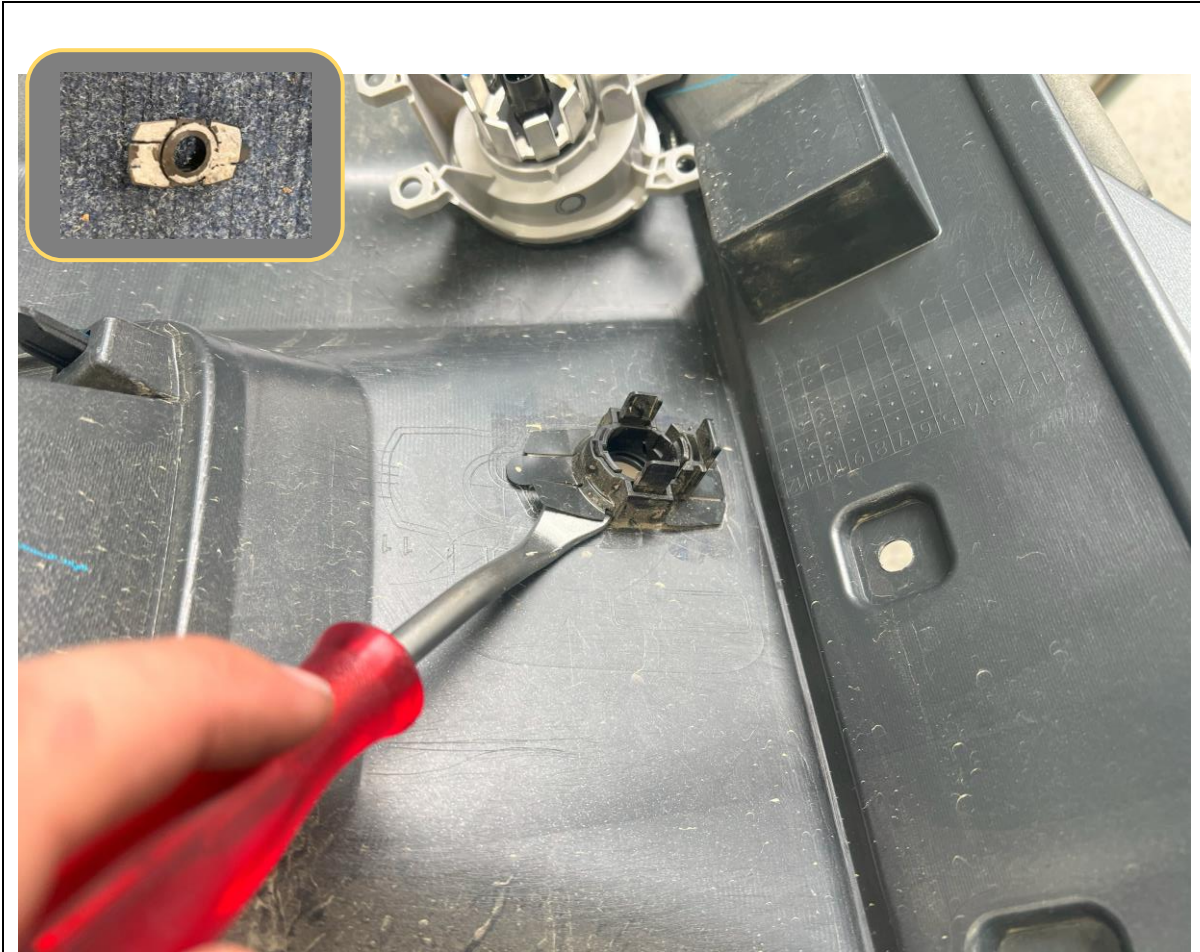
FASTENERS
Factory Screws



57. Remove parking sensors from housings, by prying apart the locking tabs, whilst pushing sensor from front side of bumper.

TOOLS REQUIRED

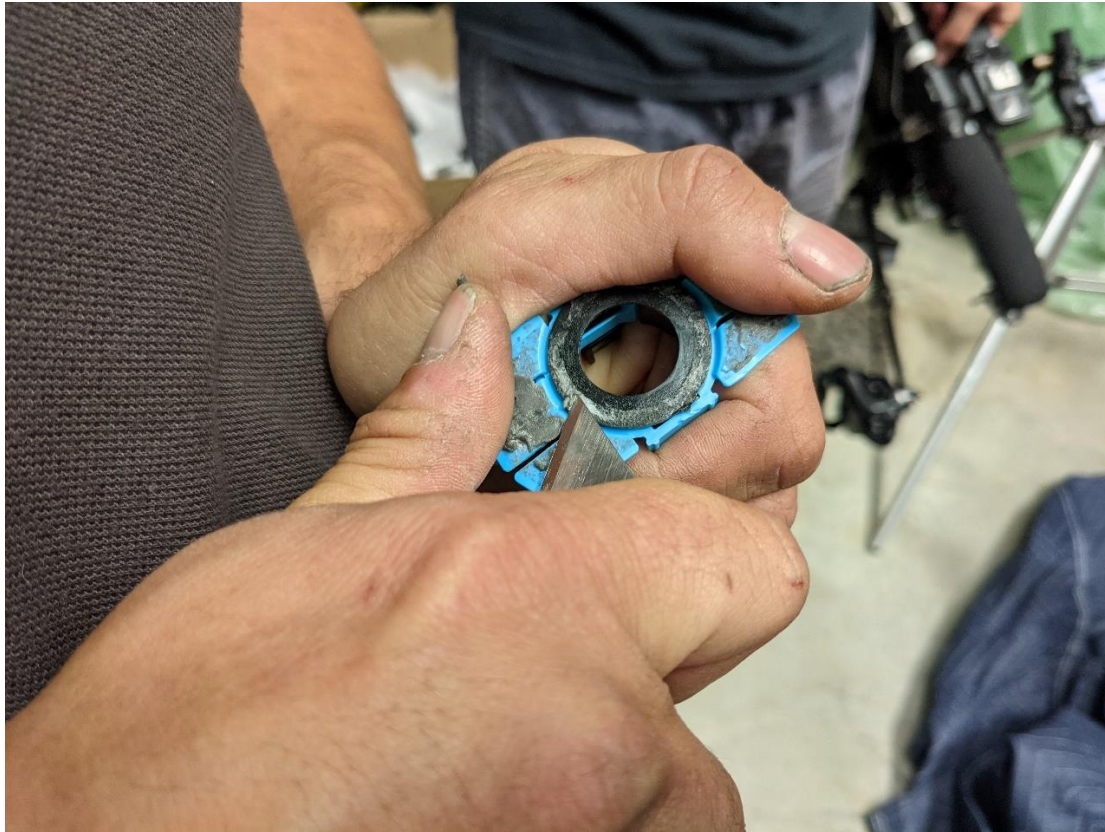
FASTENERS



58. Carefully pry the sensor housings away from the back of the bumper, using a trim tool or similar.

TOOLS REQUIRED
Trim Tool

FASTENERS

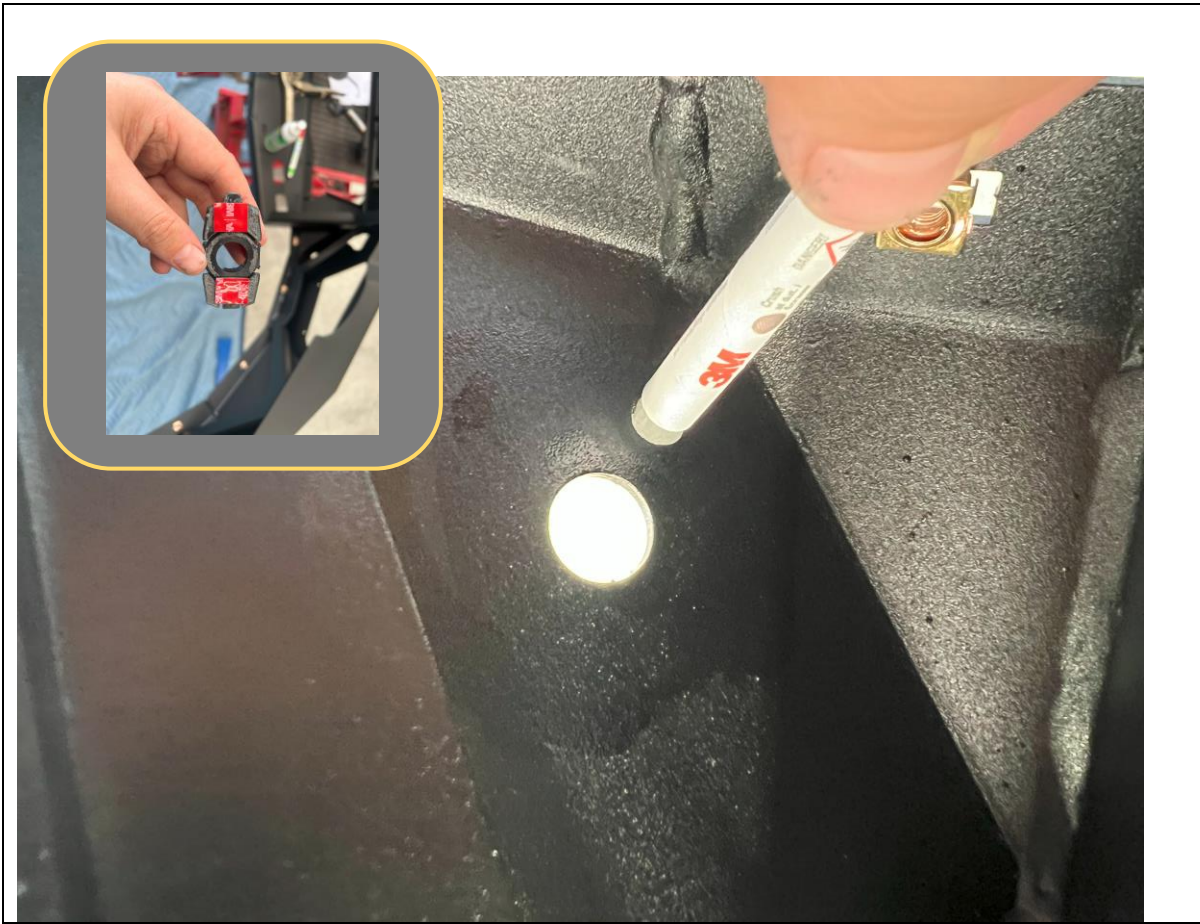


59. Remove remnant adhesive from the face of the sensor housing, using a utility knife and / or solvents.

TOOLS REQUIRED

Utility Knife
Solvents

FASTENERS



- 60. Break the bulb of the supplied Primer 94 ampule to activate the primer dispensing.
- 61. Apply Primer 94 to all areas adjacent to the parking sensor locations, on both the bar and the sensor housings.
- 62. Apply supplied VHB tape pads to all sensor housings as shown in the inset photo.

TOOLS REQUIRED

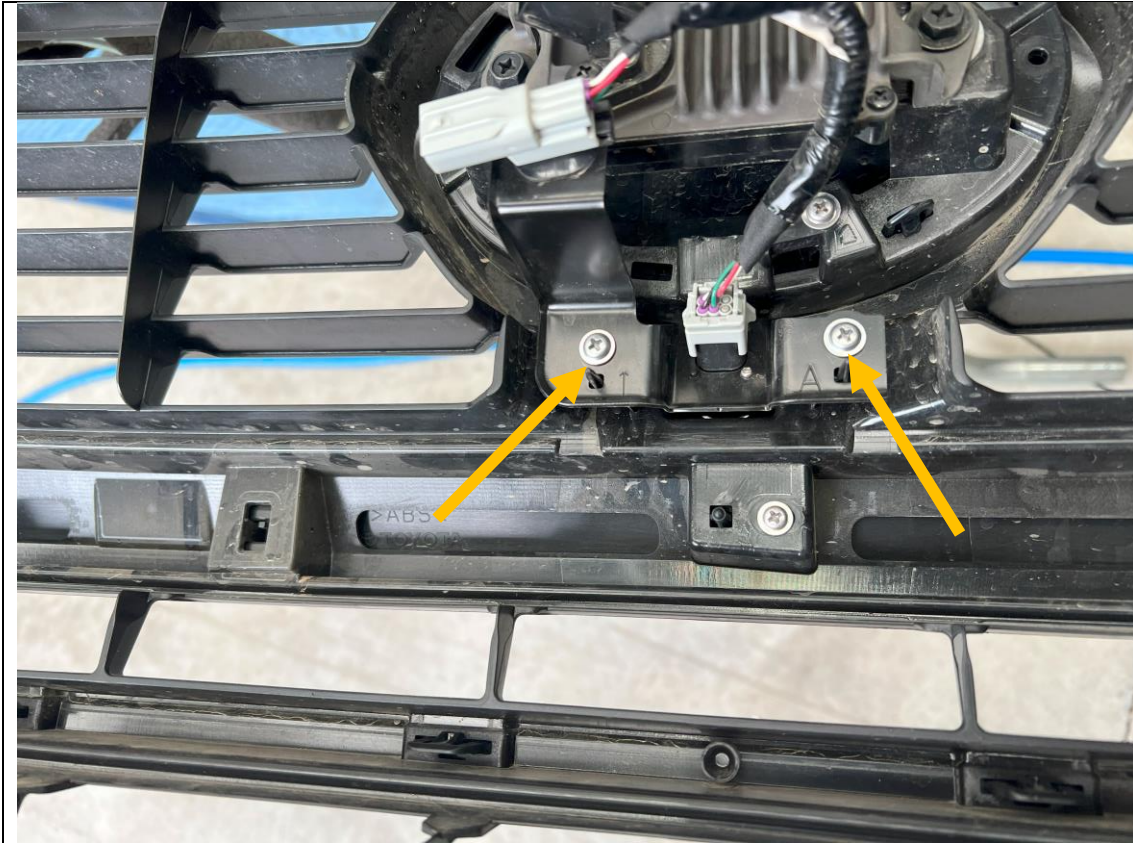
- FASTENERS**
- VHB Tape pads
 - Primer 94 Ampule



- 63. Fit sensors housing, then dry fit to bar to check plug position is as per above photo.
- 64. Remove backing and adhere sensors in position in bar. Apply pressure for 10-30sec after positioning for best adhesion.

TOOLS REQUIRED

- FASTENERS**
VHB Tape pads
Primer 94 Ampule

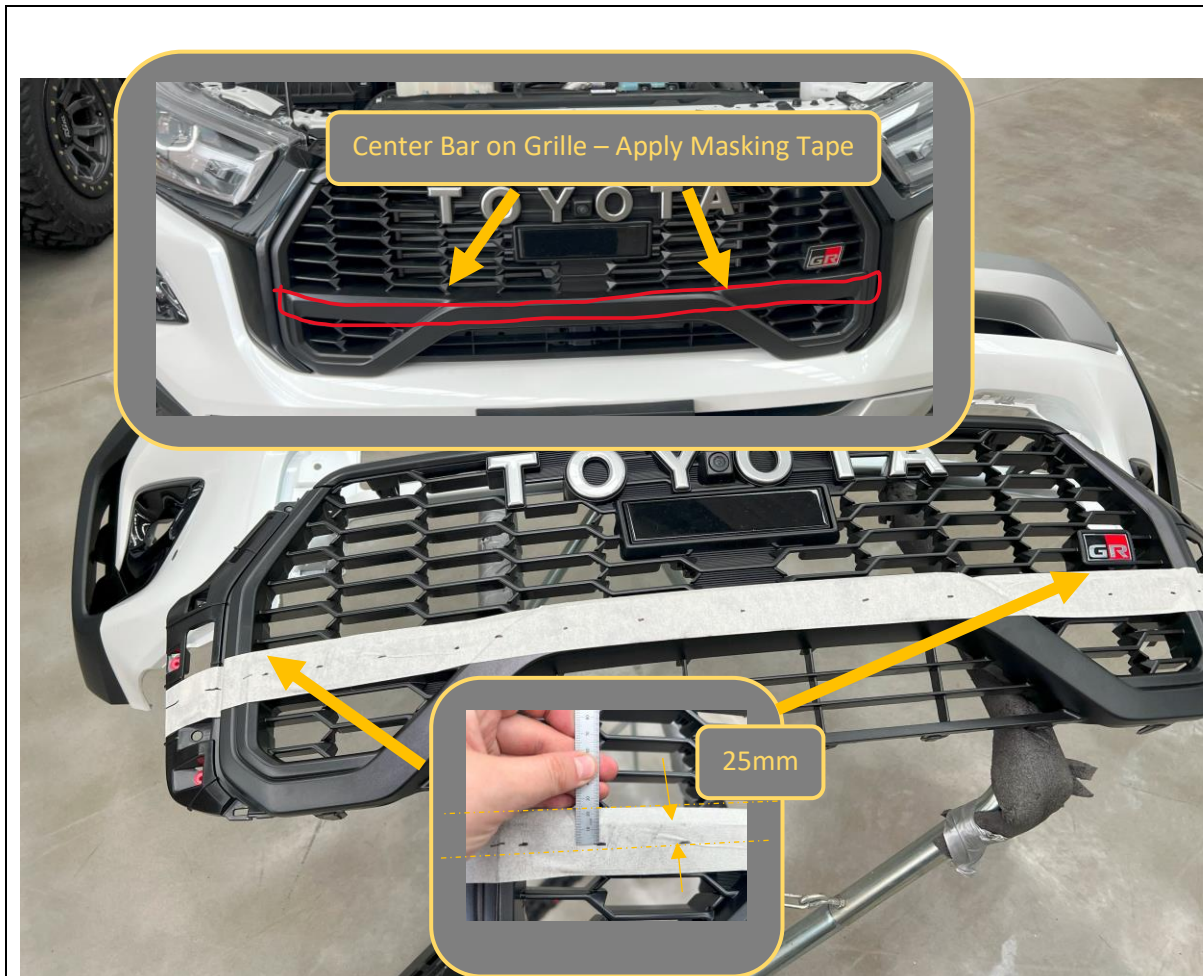


65. It is possible to relocate the camera module to the bar if desired. Under normal circumstances this is not necessary, and Offroad Animal recommends leaving it in the standard position in the grille.

66. If optionally relocating camera module remove module from the grille with 2x Phillips head screws.

TOOLS REQUIRED
Phillips Head Screwdriver

FASTENERS



- 67. Apply Masking tape to the center bar of the grille.
- 68. Make a line parallel to the top edge of the center bar 25mm below. Mark this line on the tape using a marker across the whole width of the grille.

TOOLS REQUIRED
Masking Tape
Marker Pen
Rule or Measuring tape

FASTENERS



69. Using angle grinder, jigsaw, oscillating multi tool or air hacksaw, cut along marked cut line.

70. Ensure cut is neat and straight.

TOOLS REQUIRED

Angle Grinder or Air Hacksaw or Oscillating Multi Tool or Jigsaw

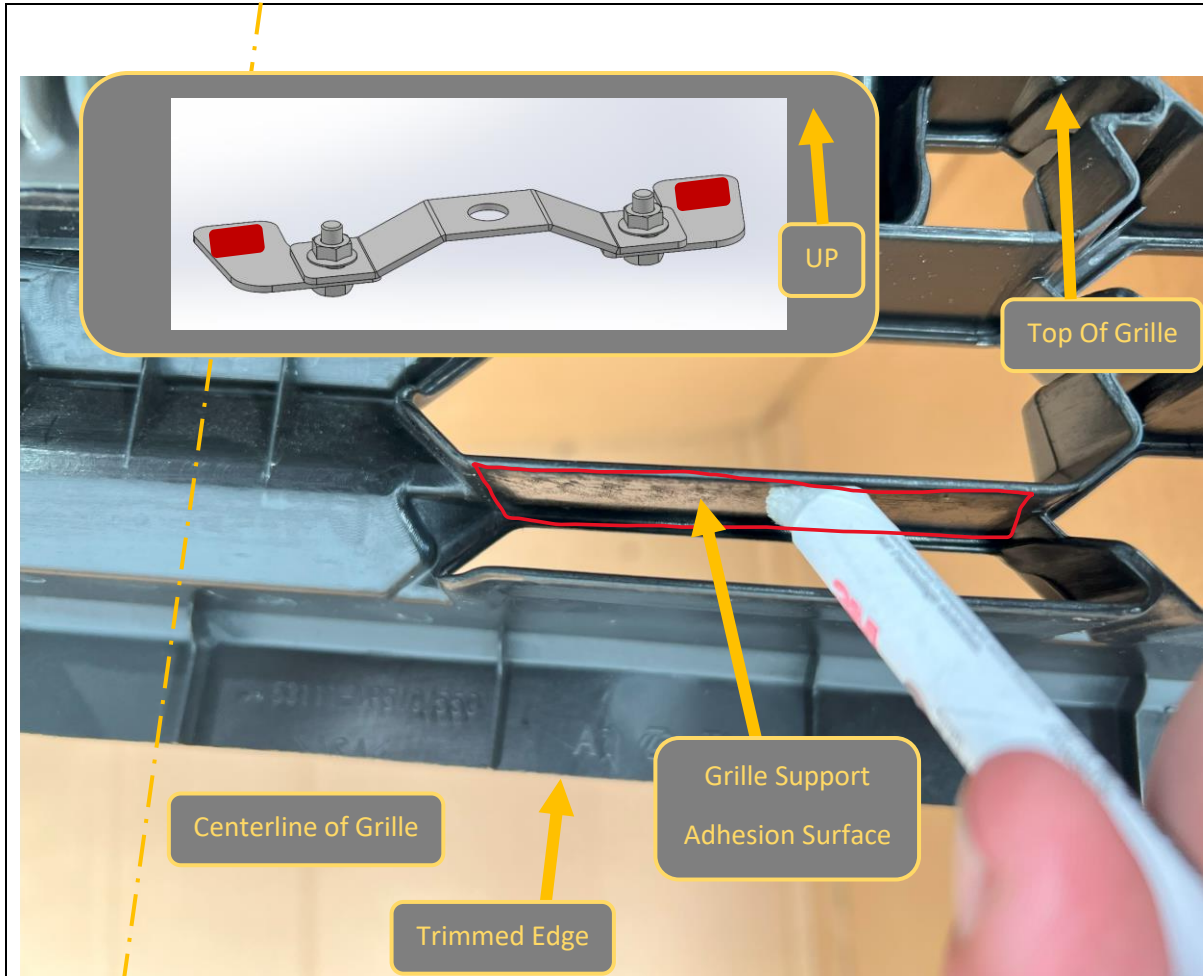
FASTENERS



- 71. Clip on the gloss black grille trims to the edge of the cut grille.
- 72. Apply masking tape to the grille and gloss black trim. Align the tape with the cut edge of the cut down grille to create a continuation of the cut edge onto the clip-on piece.
- 73. Once marked, remove the trim from the grille and cut along the edge marked using the same tools used for the grille cut.

TOOLS REQUIRED
Angle Grinder or Air Hacksaw or
Oscillating Multi Tool or Jigsaw
Masking Tape
Marker

FASTENERS

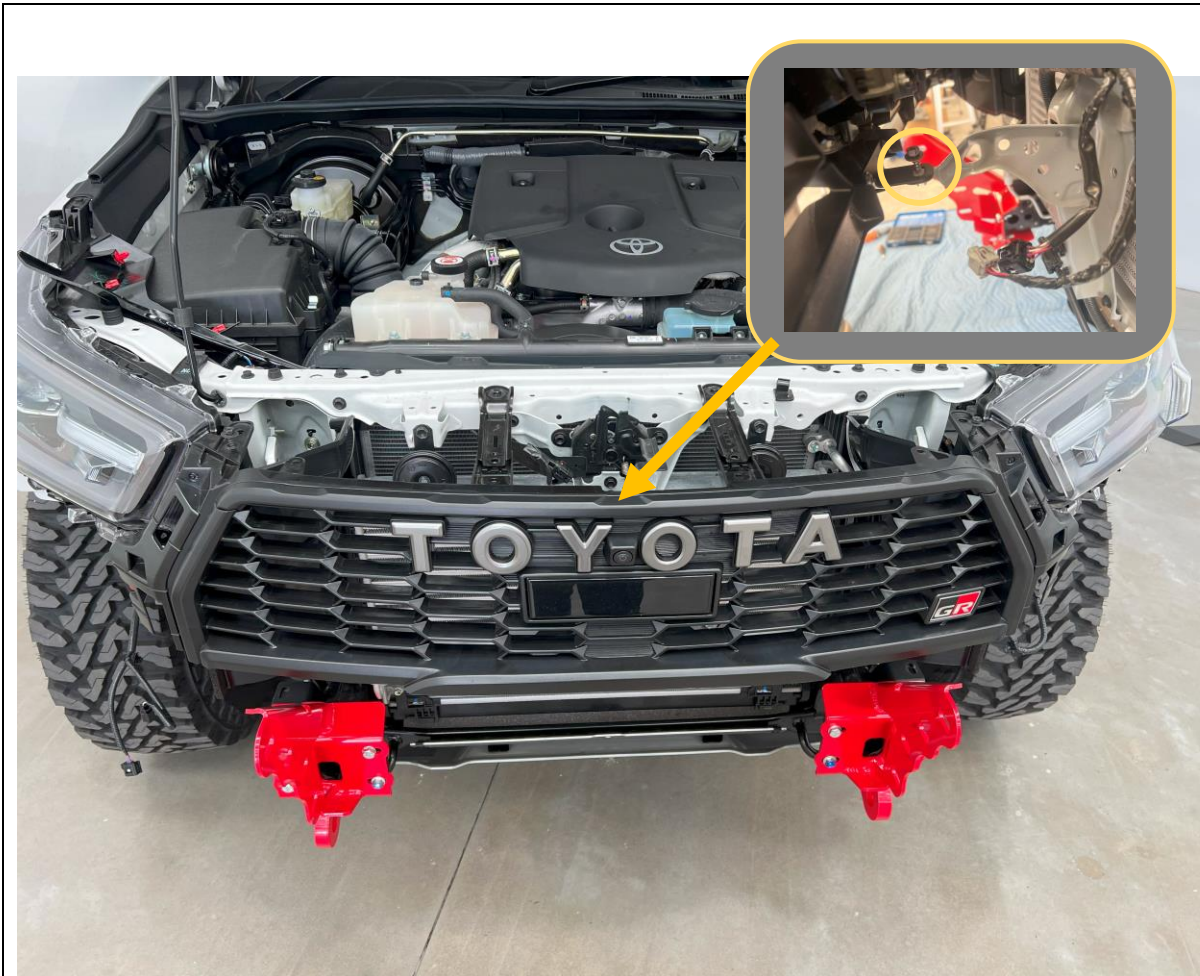


74. Assemble the grille support bracket, with the fasteners in the midpoints of the slots as shown in the inset image.
75. Using the Primer 94 bulb from the sensor fitment, clean and prime the top of the support bracket and the mating surface on the grille as shown. Prime surface on both sides (LH and RH) of the grille
76. Apply 3m Tape pads from the parking sensor kit to the assembled grille support brackets as shown by the red icons in the inset image.
77. Bond the Grille support bracket to the grille, centering the bracket on the adhesion surfaces as best as possible. Hold pressure on the pads for 20-30 seconds to ensure good bonding.

TOOLS REQUIRED

FASTENERS

- 2x 3M Tape Pads
- 2x 6x16 Hex Bolt
- 2x M6 Flange Nut
- 2x M6 Washer

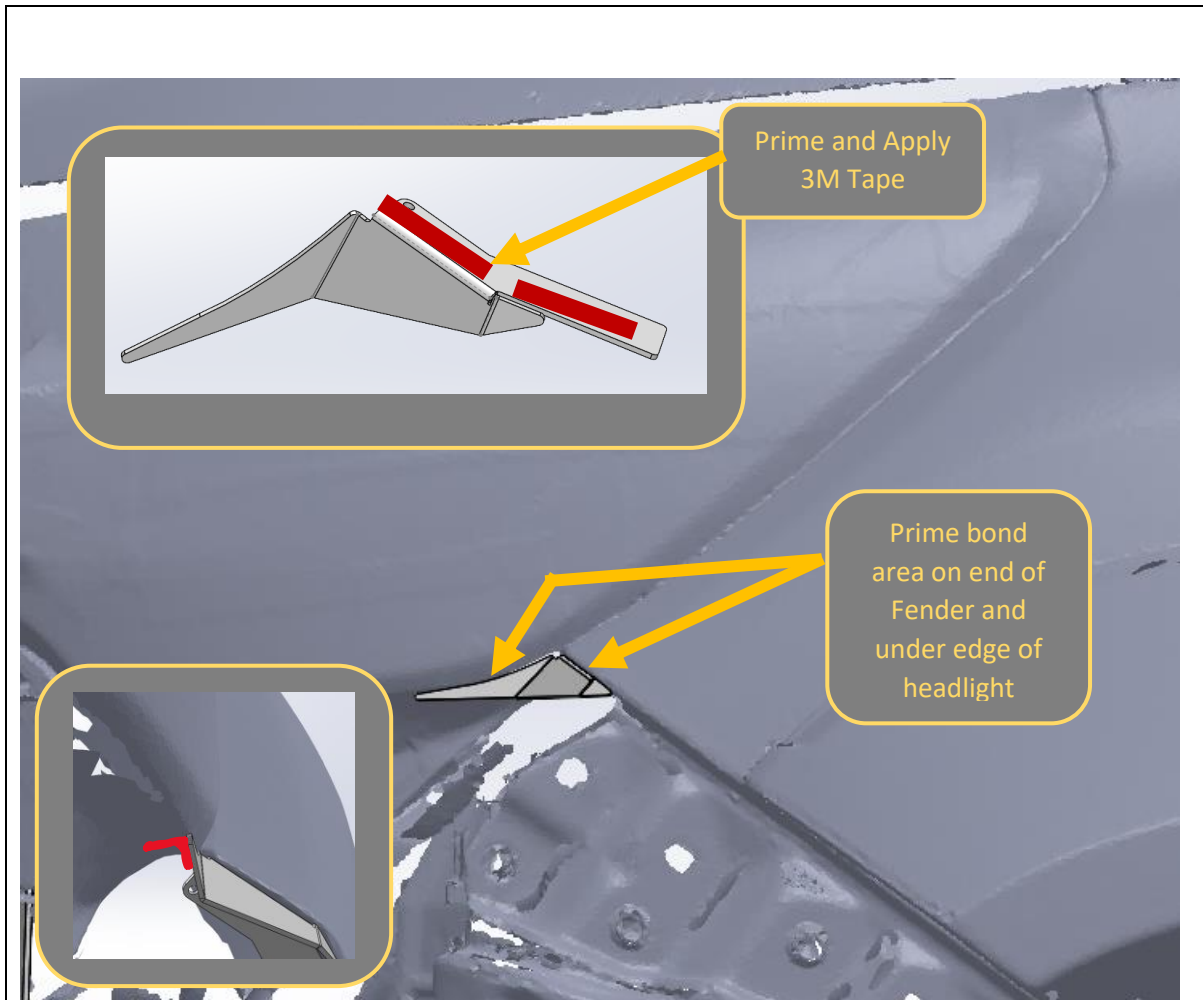


- 78. Re fit the trimmed section of the grille to the vehicle.
 - 79. Secure top of grille using original 10mm Fasteners.
 - 80. Secure the grille support bracket to the plastic insert in the using a factory self-tapping Philips screw (from bumper removal) and the supplied M6 large Washer.
- Loosen and adjust the grille support bracket M6 Bolts to allow correct positioning of grille and re-tighten as required.

TOOLS REQUIRED
10mm Socket
Phillips screwdriver

FASTENERS
Factory Self Tapping Screw
M6 Large Washer

Factory Grille support bolts



81. Using 3M primer stick from parking sensors, apply primer to end of fender panel and small headlight infill in the bonding area as shown.
82. Cut and apply length of 3M tape to the small headlight infill panel as shown in the inset image.
83. Fit the headlight infill using the 3M tape. Apply pressure for 10-30 seconds to ensure strong bond.
84. Use final tape pad to secure the backside edge of the infill to the underside of the headlamp.

TOOLS REQUIRED
3M Primer 94
3M Tape

FASTENERS



- 85. If fitting a light bar to the center section of the bar, do so at this stage, before fitting the bar to the car.
- 86. Use hardware provided with the Lights to fit to the bar.
- 87. This is also the best time to fit driving lights or top hoop to the bar.
- 88. After fitment of driving lights fit the pan brace between the gusset and Top pan using supplied M6 hardware as shown.
- 89. Fit the pinch weld rubber to the top edge of the bar

TOOLS REQUIRED
4mm Hex
10mm Socket / Spanner

FASTENERS
2x M6x16 Button Head
2x M6 Flat Washer
2x M6 Flange nut



90. Insert cage nuts to square slots in bottom of wings. Seat cage nut against one edge of slot then push other edge in with flat bladed screwdriver.

TOOLS REQUIRED
Flat bladed screwdriver

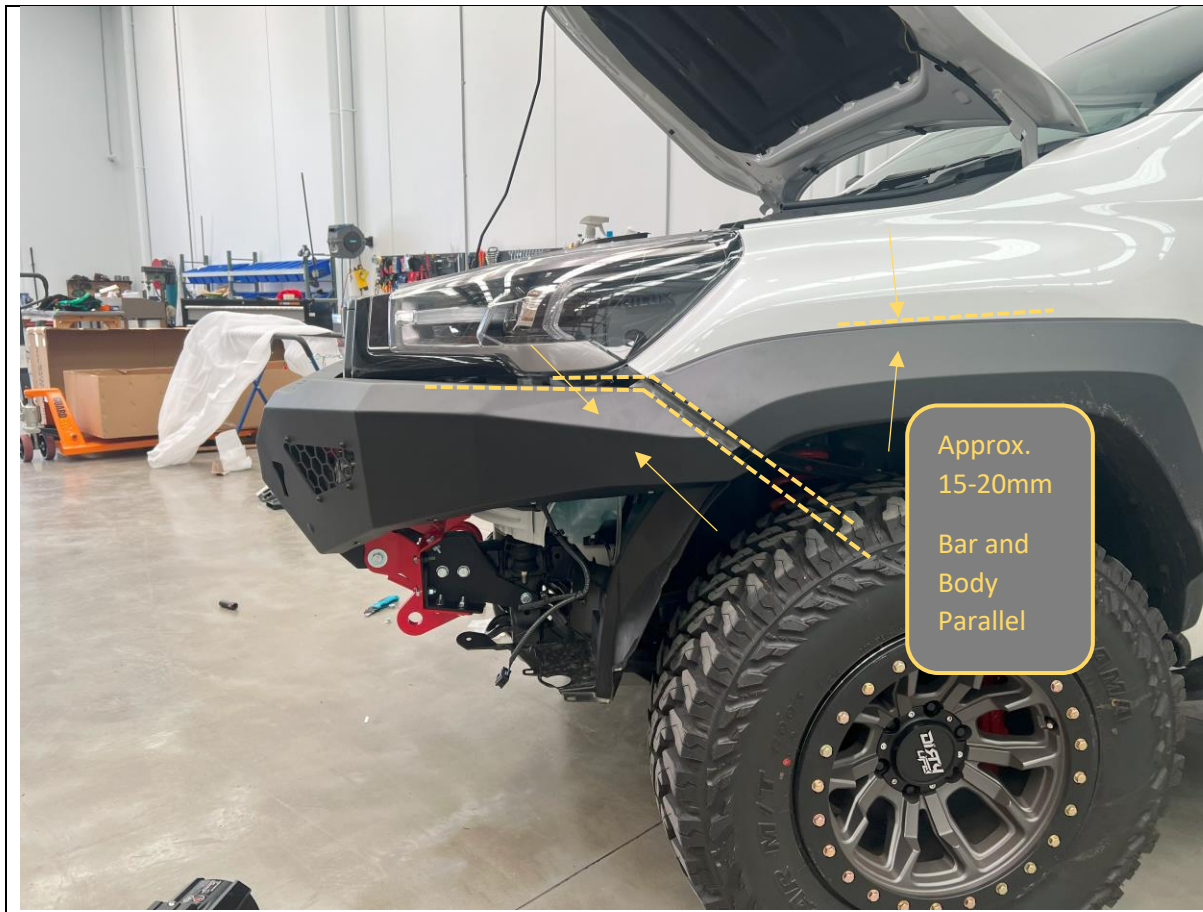
FASTENERS
5x M6 Cage Nuts



91. With assistance, from either another person or mechanical lifting aid such as a lift trolley, offer the bar up to the mounts.
92. Secure the bar to the mounts using single M12x30 Bolt 2x M12 Heavy Duty flat washers and M12 Nyloc Nut per side
93. Loosely fit the other 3x M12x30s Bolt 6x M12 Heavy Duty flat washers and 3xM12 Nyloc Nuts per side.

TOOLS REQUIRED
Lifting trolley

FASTENERS
8x M12x30 Bolt
16x M12 HD Washer
8x M12 Nyloc Nuts



94. Align the bar with the body. Aim for 15-20mm clearance between the wing and body.

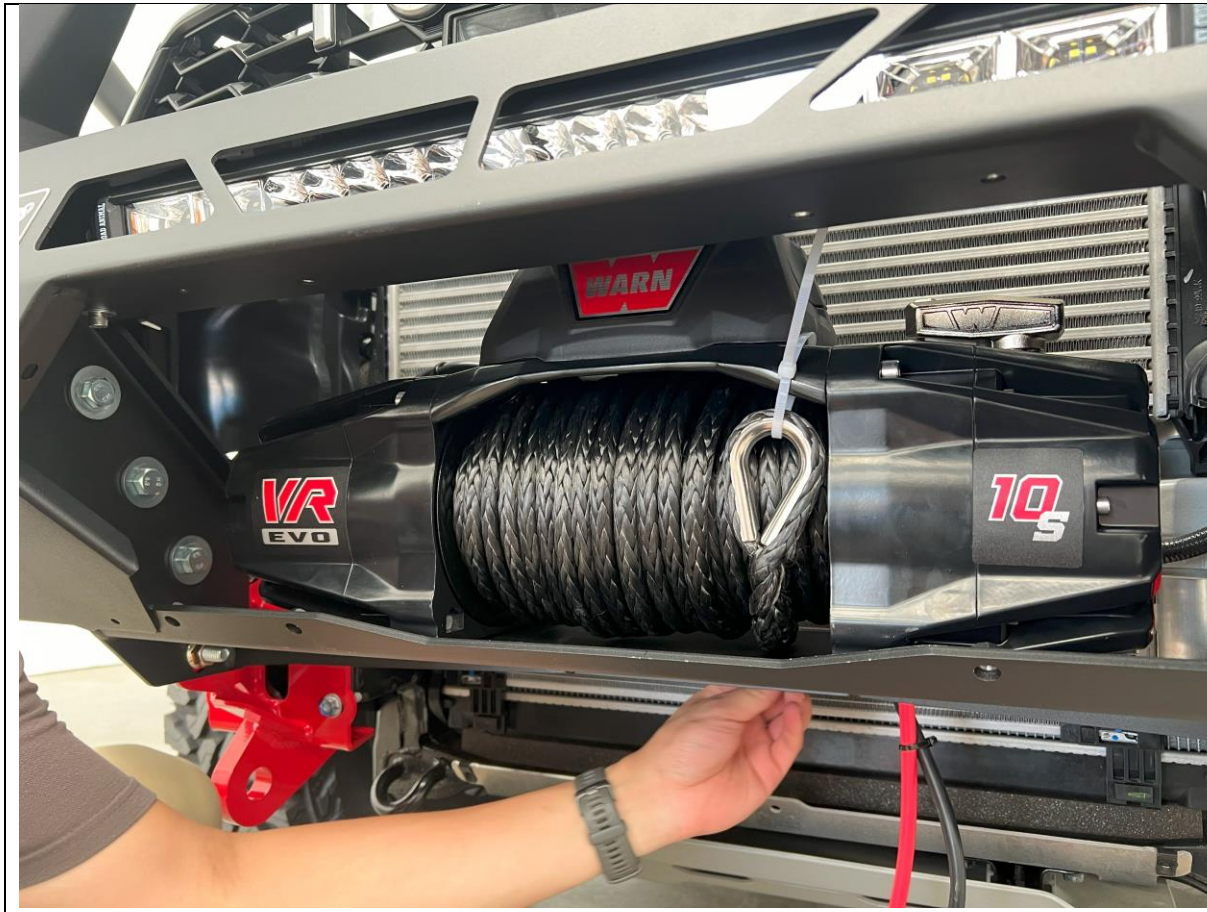
IMPORTANT: It is the installers responsibility to ensure clearances are set so that no part of the bar touches the vehicle. Remember that body is rubber mounted and will move relative to bar in use.

95. With assistance, Hold the bar in position and tighten all the Bar to mount bolts, using 18/19mm socket and spanner.

An Electric Impact wrench makes this process much easier.

TOOLS REQUIRED
18/19mm socket
18/19mm spanner

FASTENERS



- 96. If fitting a winch to the bar, do so at this stage. Follow the winch manufacturer’s instructions.
- 97. The winch mounts feet down and is inserted through the front opening of the bar.
- 98. Most winches will fit underneath the triangular cross brace. Warn Zeon 10 winches will need to trim this cross brace to gain sufficient clearance.

TOOLS REQUIRED
Refer to winch Instructions

FASTENERS
Refer to winch Instructions



- 99. If relocating the camera module, fit to the center mesh panel, using the original bracket, and supplied M6x16 button head screws, flat washers and flange nuts.
- 100. If fitting winch, attach fairlead to center mesh panel using bolts supplied in winch fitting kit. Ensure winch rope is fed through fairlead.
- 101. Fit number plate flip to mesh panel using M6x20 Hex bolt, Flat washer, and flange nut, supplied in number plate flip kit.

TOOLS REQUIRED

- 10mm Socket
- 4mm hex key

FASTENERS

- 2x M6x20 Hex Bolt
- 4x M6 Flat washer
- 4x M6 Flange Nut
- 2x M6x16 Black Button Head



102. Fit Mesh panel to the bar. Secure with 2x M8x16 Black Button Head Screws, M8 Flat washer and M8 Flange nuts at top and 2x M8x20 Hex Bolts M8 Flat washer and M8 Flange nuts at Bottom.

TOOLS REQUIRED

5mm Hex Key
13mm Spanner
10mm spanner

FASTENERS

2x M8x16 Button Head
2x M8x20 Button Head
4x M8 Black Flat Washer
4x M8 Flange Nut



103. Fit the side mesh panel to the bar, using only the top and side points at this stage. Secure with 2x M6x16 Black Button head, bolts, Black M6 Flat washer and flange nut.

104. Repeat for other side of vehicle.

105. Fit Number Plate to number plate flip, using M5 fasteners supplied with number plate flip

TOOLS REQUIRED

- 4mm Hex Key
- 10mm Socket
- 10mm Spanner

FASTENERS

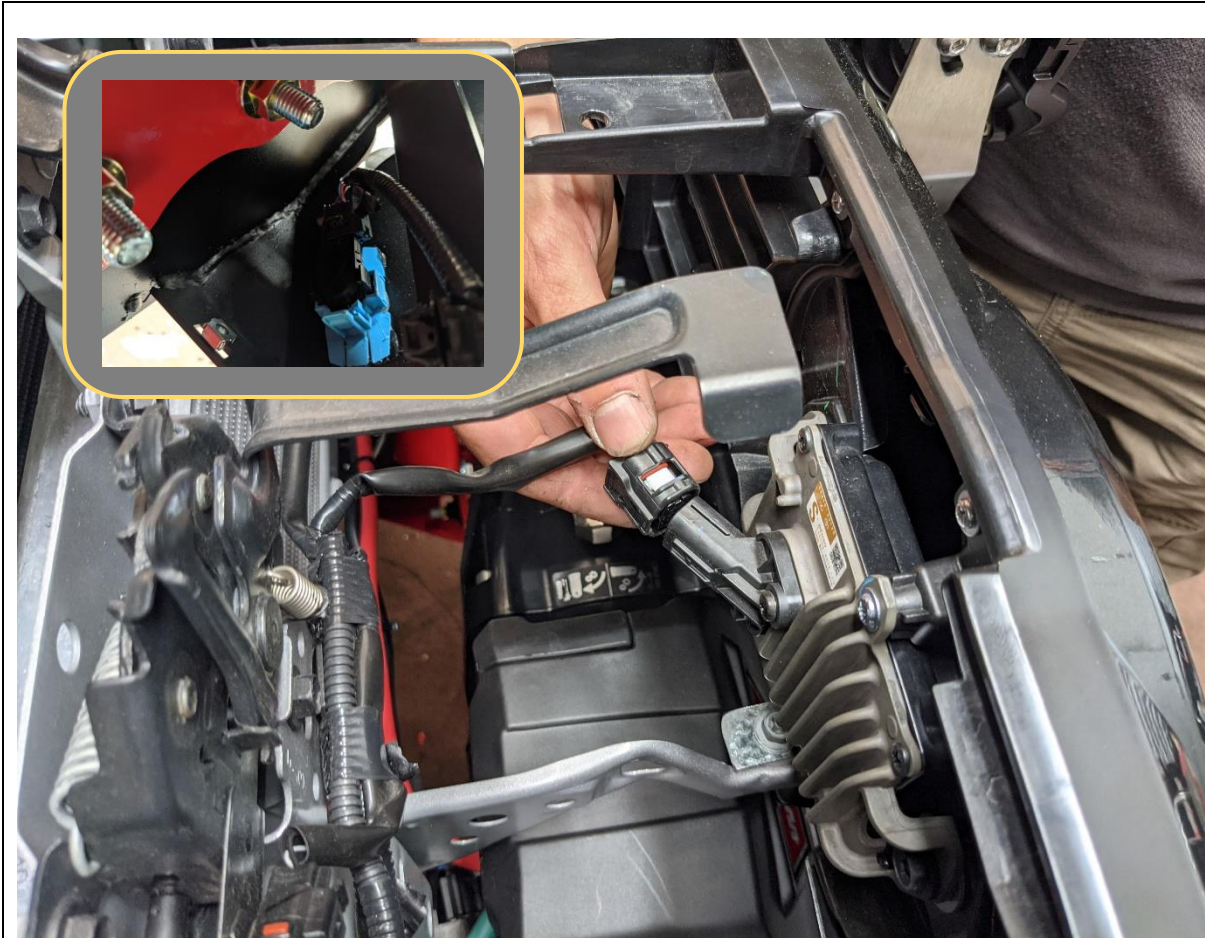
- 4x M6x16 Button Head
- 4x M6 Black Flat Washer
- 4x M6 Flange Nut



<p>106. If re-fitting factory fog lamps, fit the fog lamps to the supplied fog lamp brackets using the M6x16 screws and Flange nuts provided.</p>	<p>TOOLS REQUIRED 4MM Hex Key 10mm Spanner</p>
<p>107. Fit the fog lamp brackets, to the light mesh panels using 3x M8x16 Button head bolts,</p>	<p>FASTENERS (if fitting fog lamp) 4x M6x16mm screw 4x M6 Flange Nuts</p> <p>3x M8x16mm Button head bolts 3x M8 Flat Washer 3x M8 Flange Nuts</p> <p>Per side</p>
<p>108. If fitting own lamps in light mesh, fit now using slots on panel, and hardware provided with lights.</p>	
<p>109. Repeat for both sides of vehicle.</p>	



<p>110. Fit light mesh panels to the bar. Position the panel from underneath the bar and align with the mounting holes in the wing. Secure with 4x M6x16mm Button head bolts and M6 Flange Nuts</p> <p>111. Repeat for other side of vehicle.</p> <p>112. Reconnect fog lights, or additional driving lights, depending on what was fitted.</p>	<p>TOOLS REQUIRED 4mm Hex Key 10mm Spanner</p>
	<p>FASTENERS 4x M6x16mm Button head bolt 4x M6 Flange Nut</p>



- 113. Re-connect all wiring harnesses to the adaptive cruise sensor, front camera, parking sensors and fog lights
- 114. Replace the radiator shroud to top of grille, Secure with factory push center clips.

TOOLS REQUIRED

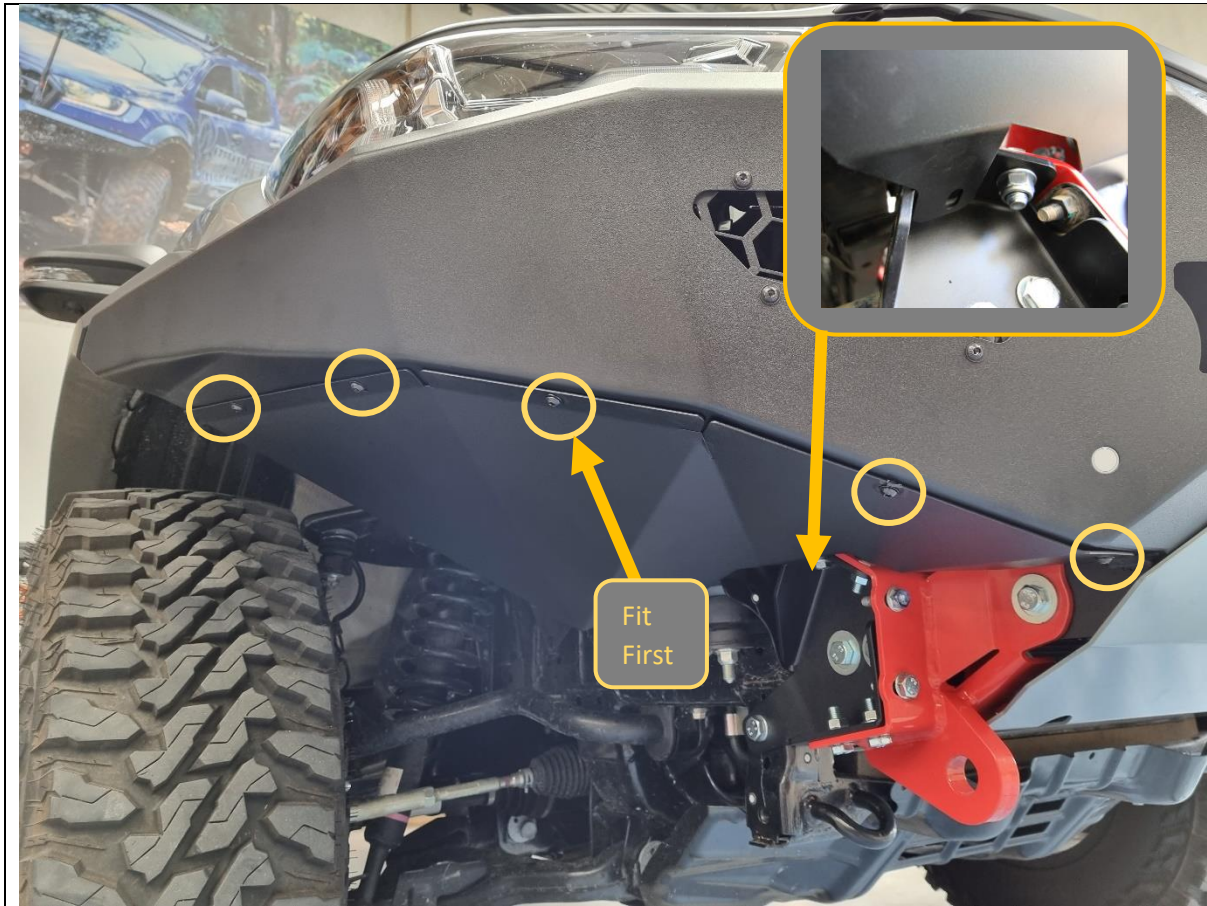
FASTENERS



- 115. Fit bash plate to vehicle.
- 116. First secure the top of the bash plate to the bottom of bar, through Shim plate, Mesh panel, then bar itself. Secure with M8x20 Button head bolts, Flat washer into welded nuts in bar.
- 117. Secure bottom of Bash plate to mounts M10x30mm Button head Bolt, Flat washer and M10 Flange Nut. Insert nut through access hole in bash plate as shown.

TOOLS REQUIRED
 5mm Hex
 6mm Hex
 13mm Spanner & Socket
 15mm Spanner

FASTENERS
 4x M8x20 Button head Bolt
 4xM8 Flat washer
 2x M10x30 Button head Bolt
 2x M10 Flat washer
 2x M10 Flange nut



118. Fit side under panels to bar and secure with 5x M6x16 Button head bolts and M6 Flat washers, into M6 cage nuts fitted earlier.

Fitting the center bolt first will make it easier to align panel to bar.

119. Secure the back corner of under panel to mount using M8x20 Hex bolt, Flat washer and M8 Flange Nut.

120. Repeat for other side of vehicle.

TOOLS REQUIRED

4mm Hex Key
13mm Spanner / Socket

FASTENERS

5x M6x16 Button head bolt
5x M6 Flat Washer
1xM8x20 Hex head
1xM8Flat Washer
1x M8 Flange nut
Per side

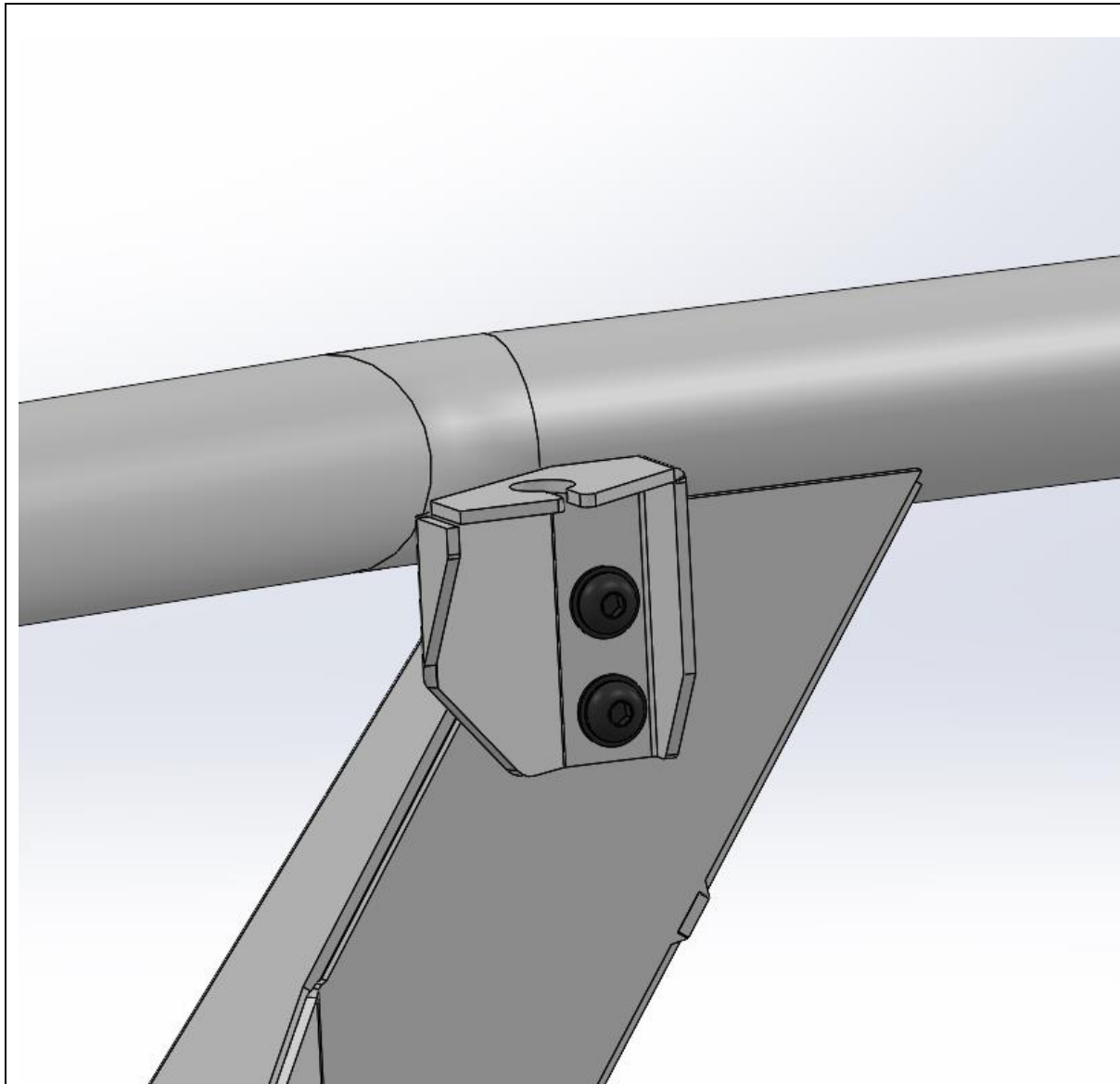


- 121. Mark where wheel arch liner intersects with side under panel with paint pen or another marker.
- 122. Create line offset approximately 20mm below intersection point.
- 123. Trim wheel arch liner to this line using utility Knife.
- 124. Insert wheel arch liner behind flange on side under panel.

TOOLS REQUIRED

Marker
Utility Knife

FASTENERS



125. For Toro bars, if fitting antenna fit the antenna brackets to the captive nuts in the uprights using supplied M8x20 Button head bolts, and flat washers

Note: Due to close fitting nature of bar Oversized UHF antenna bases are not suitable for fitment.

TOOLS REQUIRED
5mm Hex Key

FASTENERS
2x M8x20 Black Button head
2xM8 Black Flat Washer

Per side



- 126. Fit the logo plate to the front of the bar as shown.
- 127. Fit the Compliance plate in a visible location on the underside of the bar. We recommend placing it on the bottom of the center bash plate.
- 128. Review fitment and double check all bolts are tight.

TOOLS REQUIRED

- Marker
- Utility Knife

FASTENERS



Congratulations!
Head for the tracks and enjoy your newly protected Toyota Hilux GR Sport!