

RAM 1500 DT 2095 MY ONWARDS REAR BAR

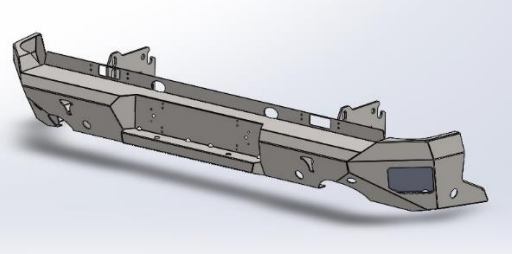
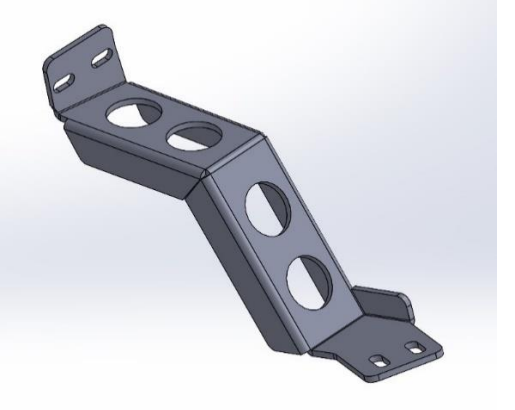
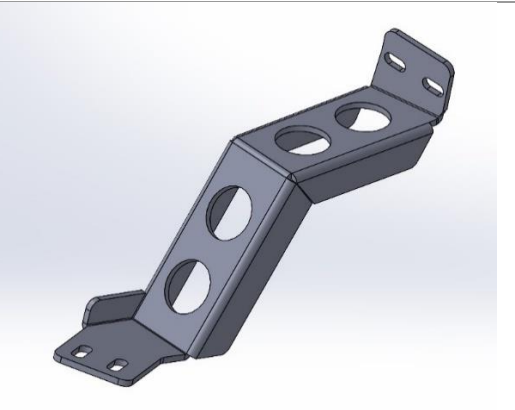
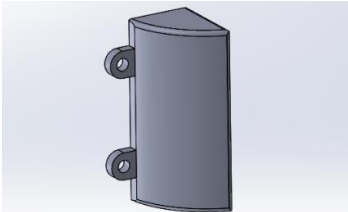
IMPORTANT! – READ BEFORE INSTALLATION

- When installed in accordance with these instructions, the rear protection bar maintains the factory tow rating of your vehicle and works with the factory tow bar fitted by Ram.
- This product must be installed exactly as per these instructions using only hardware supplied.
- Take a few moments to read instructions thoroughly before beginning work.
- In the event of damage to any bar component please contact OFFROAD ANIMAL to arrange repair/replacement of components.
- Do not use this product for any vehicle make or model other than that specified on these instructions.
- Do not remove labels from this product.
- This product and its fixings must not be modified in any way unless stated in these fitting instructions.
- The installation of this product is recommended for trained personnel.
- These instructions are correct at time of publication. OFFROAD ANIMAL cannot be held responsible for the impact of any changes subsequently made by the vehicle manufacturer. If you find something has changed please contact us to let us know!
- During installation it is the duty of the installer to check correct operation/clearances of all components.
- If Instructions are to be printed for reference in the workshop, it is recommended that they are printed in colour, for best legibility.

PARTS LISTING

IMPORTANT: Check all parts are present before beginning work! Contact OFFROAD ANIMAL if something is missing.

Main Parts – In the Box

Qty	Part Number	Description	Image
1	RB-R15-DT-19-ASM1	DT RAM REAR WELDMENT	
2	B-0689R	DT RAM REAR REO ARM RH	
1	B-0689L	DT RAM REAR REO ARM LH	
2	BR25B	LED NUMBER PLATE LIGHT	

Small Parts – Contained in Small Parts Kit Bag

Qty	Part Number	Description
1	OFA-LOGO	OFFROAD ANIMAL METAL LOGO
2	PW-P-14X9-1600	Pinch Weld - Plain Non Seal 1600mm
4	M10X30	M10 X 30 HEX BOLT 8.8 ZINC
8	M10 FW	M10 FLAT WASHER ZINC
8	M10 FN	M10 FLANGE NUT
4	M10X30 BHCS	M10 X 30 BUTTON HEAD CAP SCREW
2	M5X15 PAN	M5 X 15 PAN HEAD SCREW ZINC
2	M5 FN	M5 FLANGE NUT
2	M6X35 BHCS	M6 X 35 BUTTON HEAD CAP SCREW ZINC
4	M6 FW	M6 FLAT WASHER ZINC
4	M6 NY	M6 NYLOC NUT

TOOLS REQUIRED

The following tools will be required to install the product.

Hand Tools	Power Tools	Workshop Equipment
Metric Socket Set 8-22mm Metric Spanner Set 8-22mm Hex (Allen) Key Set 4-8mm Side Cutters Wire Strippers Trim tool or Flat head screw driver Phillips head screw driver	Electric / Air Impact Driver (Optional but speeds up fitting process)	Lift Trolley Electrical terminals Adhesive Silicone or Double sided tape Electrical Tape

WORKSHOP SAFETY

It is the responsibility of the installer to always complete works in a safe manner. Make sure the following safety equipment is available and precautions are observed whilst fitting this product.

<p>Hearing Protection</p> 	<p>Always wear ear protection when using power tools.</p>
<p>Eye Protection</p> 	<p>Ensure eye protection is always worn when cutting or drilling.</p>
<p>Manual Handling</p> 	<p>Do not attempt to lift bar assemblies or rock sliders on your own.</p> <p>Always use two people to lift or use mechanical Lifting aid such as hydraulic lifting trolley.</p>
<p>Vehicle Support</p> 	<p>Always ensure vehicle is properly supported when working on it. Do not attempt to fit products whilst suspension work is being carried out. Do not work under a vehicle supported only by a jack.</p>



1. Remove Ram factory bumper and if fitted pull out step. Refit tow bar leaving large M16 bolts out



TOOLS REQUIRED

Socket set
Spanner set

FASTENERS



2. Remove factory reverse and brake lamp from factory bumper
3. Remove wiring looms from bumper



TOOLS REQUIRED

7mm socket

FASTENERS

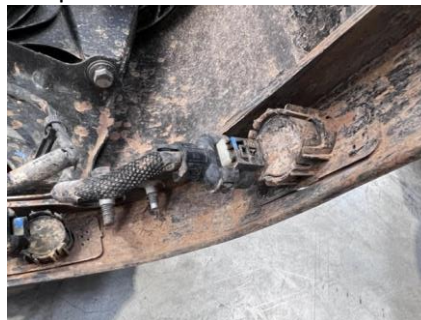
Discard



4. Unplug each parking sensor by pulling the housing tabs away from the sensor and sliding it out
5. Using a trim tool or flat head screw driver, pry off factory sensor housings. Retain to refit in new bumper
6. Ensure you keep track of which sensor goes in which housing and the orientation in the bumper

TOOLS REQUIRED

Trim tool



FASTENERS



7. Refit rectangular stop lamp and reverse lamp into the new bumper with M6x 35 button head cap screws and nyloc nuts

TOOLS REQUIRED
4mm Hex key

FASTENERS
M6 x 35 bhcs
M6 flat washer
M6 nyloc nut



8. Fit number plate lights and number plate as shown with M5 pan screws and flange nuts. Use supplied hardware with lights to fit them

TOOLS REQUIRED
Phillips head screw driver

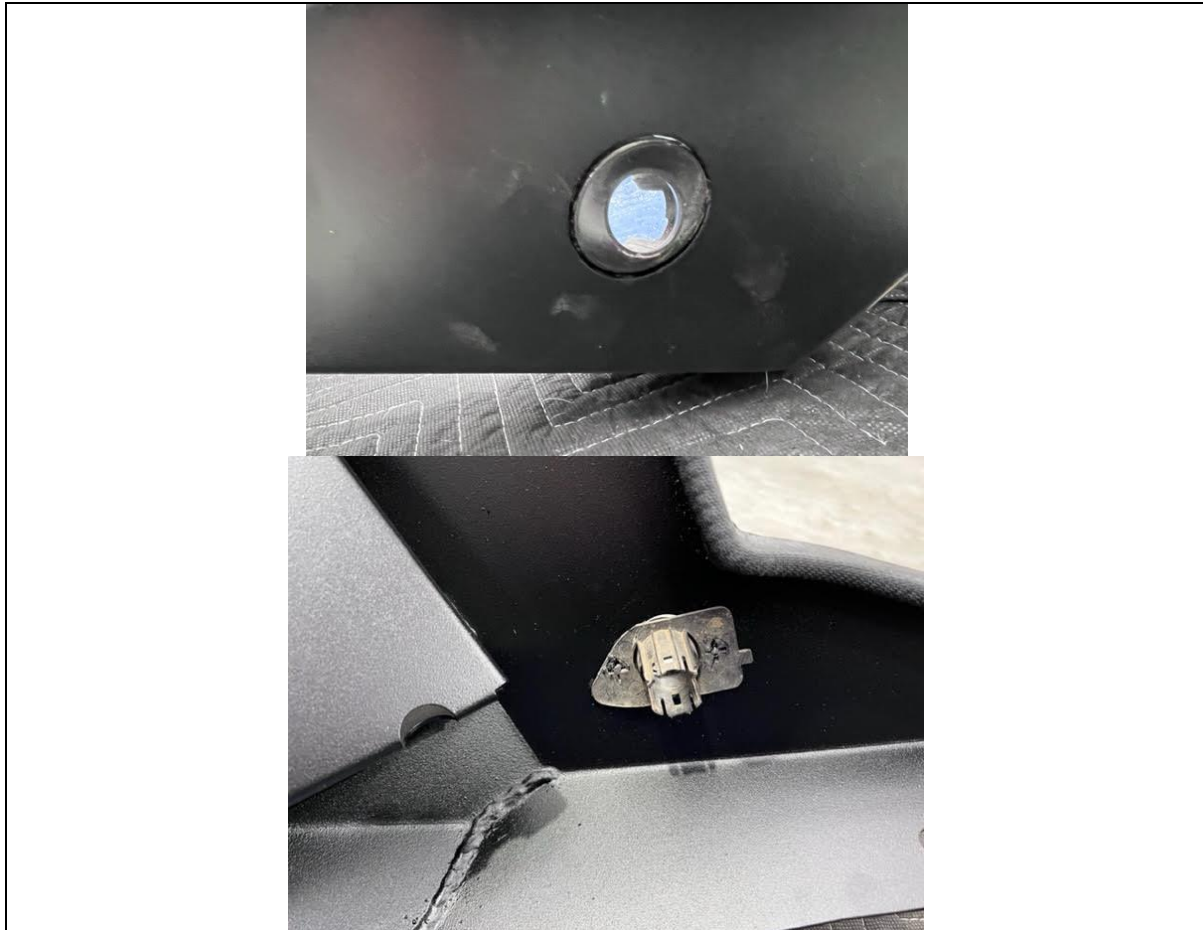
FASTENERS
M5 x 15 pan screw
M5 flange nut



9. Fit pinch weld over edges of each wing as shown. This protects the vehicle during installation of the bar

TOOLS REQUIRED

FASTENERS



10. Use an industrial grade adhesive silicone or double-sided tape to secure sensor housings to bar. Before gluing in, ensure you can get sensor wiring to each sensor. Ensure area is clean of all dirt and grime before fitting housing to bar.

TOOLS REQUIRED
Adhesive silicone

FASTENERS



- 11. Allow about 1-3 hours depending on temperature (longer for cold weather) for silicone to set. You'll need to remove some of the electrical tape on the loom to allow enough length to for each sensor to reach each housing.
- 12. Once set, run wiring through bar and push each sensor into housing

TOOLS REQUIRED

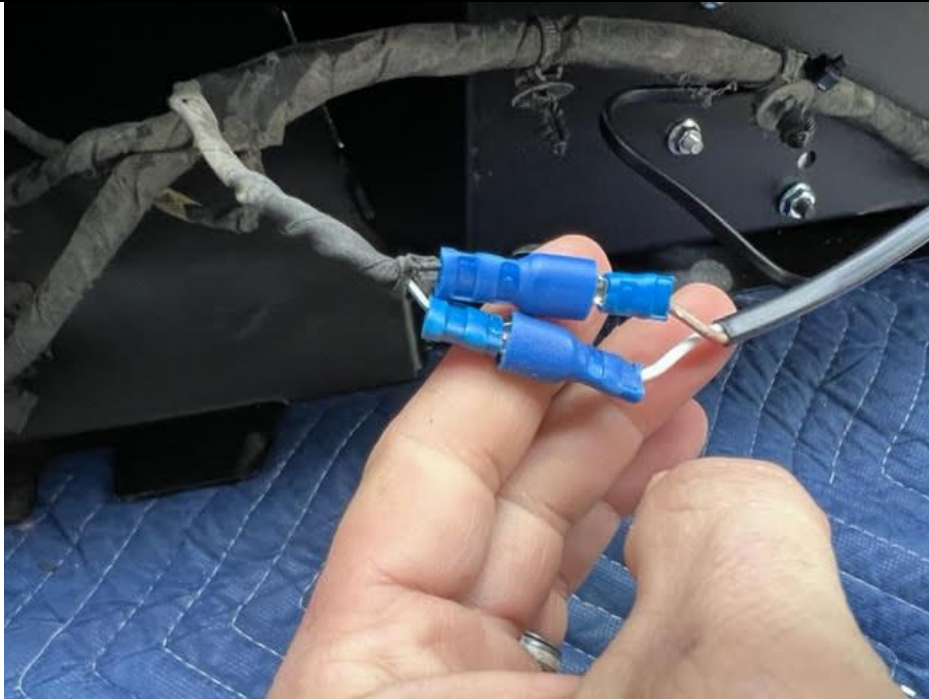
FASTENERS



13. Cover wires with electrical tape

TOOLS REQUIRED
Electrical tape

FASTENERS



14. Wire in new number plate lights to existing wires and link together with terminals

TOOLS REQUIRED
Crip tool
Wire strippers

FASTENERS



15. Lift bar on to vehicle with a friend or aid of a lifting trolley, and secure new bumper to tow bar with large M16 x 110 bolts and nuts
Torque these bolts

TOOLS REQUIRED
21mm Spanner

FASTENERS



- 16. Install the side arms as shown with M10 hardware
Button head cap screws go up through bottom as shown,
Hex bolts connect side arm to main bar
- 17. Plug in all wiring harnesses that were previously undone

TOOLS REQUIRED
6mm hex key
17mm spanner

FASTENERS
M10 x 30 Hex
M10 flat washers
M10 x 30 bhcs
M10 flange nuts



- 18. Place logo on bar
- 19. Ensure all bolts are torqued up
- 20. You're all done

TOOLS REQUIRED

FASTENERS