



TOYOTA PRADO 150 SERIES 2009 ON ROCK SLIDERS

IMPORTANT! – READ BEFORE INSTALLATION

- This product must be installed exactly as per these instructions using only hardware supplied.
- Take a few moments to read instructions thoroughly before beginning work.
- In the event of damage to any bar component please contact OFFROAD ANIMAL to arrange repair/replacement of components.
- Do not use this product for any vehicle make or model other than that specified on these instructions.
- Do not remove labels from this product.
- This product and its fixings must not be modified in any way unless stated in these fitting instructions.
- The installation of this product is recommended for trained personnel.
- These instructions are correct at time of publication. OFFROAD ANIMAL cannot be held responsible for the impact of any changes subsequently made by the vehicle manufacturer. If you find something has changed please contact us to let us know!
- During installation it is the duty of the installer to check correct operation/clearances of all components.
- If Instructions are to be printed for reference in the workshop, it is recommended that they are printed in colour, for best legibility.
- Fitting time estimated 1-2 hours

GENERAL CARE AND MAINTENANCE

Only wash the product with a PH neutral car wash to prevent paint damage and discolouration.

Plastic parts may be maintained with silicone spray.

Do not use acidic or alkaline based cleaning products.

It is important to perform regular checks (pre trip or on an annual basis) on the installed product. Checks include:

- Visual inspection for damage (eg. cracks, chips, dents etc.)
- Electrical wiring is not rubbing anything or worn out
- Bolts are torqued to correct specification (see torque guide below)

For touching up small stone chips, Offroad Animal recommends the following paint products:

- Dupli-Color Trim & Bumper Paint Black (TB101)
- VHT Hood, Bumper & Trim Paint Black (SP27)

BOLT TORQUE SETTINGS

Use the following bolt torques on all general fasteners, unless otherwise specified.

GENERAL FASTENERS	
Size	Torque Nm
M5	5 Nm
M6	9 Nm
M8	22 Nm
M10	44 Nm
M12	77 Nm

Use the following bolt torques on all structural front bar mount and tow point fasteners, and rear towbar fasteners, unless otherwise specified.

FRONT BAR MOUNTS AND TOW POINTS + REAR TOWBAR	
Size	Torque Nm
M10	57 Nm
M12	100 Nm
M14	164 Nm
M16	248 Nm

Always use a torque wrench to set correct torque settings. Ensure torque wrench is set to Nm unit of measurement. Otherwise perform conversion to lb-ft.

PARTS LISTING

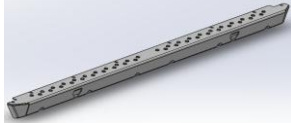
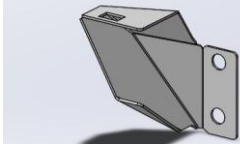
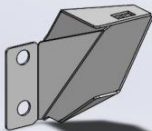
IMPORTANT: Check all parts are present before beginning work! Contact OFFROAD ANIMAL if something is missing.

Bracket Kit Parts – In the Box

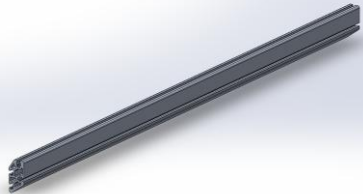
Qty	Part Number	Description	Image
1	RS-TPR-150-09-ASM2L	Toyota Prado 150 Slider Front Mount Assy	
1	RS-TPR-150-09-ASM2R	Toyota Prado 150 Slider Front Mount Assy	
1	RS-TPR-150-09-ASM3L	Toyota Prado 150 Slider Rear Mount Assy	
1	RS-TPR-150-09-ASM3R	Toyota Prado 150 Slider Rear Mount Assy	
1	B-0442L	Prado 150 Slider Front Mount Bolt on Brace	

1	B-0442R	Prado 150 Slider Front Mount Bolt on Brace	
1	B-0446L	Prado 150 Slider Rear Mount Bolt on Brace	
1	B-0446R	Prado 150 Slider Rear Mount Bolt on Brace	

Step Kit Parts – In the Box

Qty	Part Number	Description	Image
2	B-0307	Slider Step - 1450 Extrusion (76 Series)	
2	B-0306L	Slider End Cap - Stub Nose	
2	B-0306R	Slider End Cap - Stub Nose	

Step Kit Parts – In the Box

Qty	Part Number	Description	Image
2	E-0002-1450	Slider extrusion -1450MM	

Bracket Kit Small Parts – Contained in Small Parts Kit Bag

Qty	Part Number	Description
5	NP-COM-M8-210-ASM0	M8 Nut Plate 210mm
2	NP-COM-M12-300-ASM0	M12 NUT PLATE 300MM STEM
30	M8 X 20 HEX	Bolt Hex, M8X20x1.25, GR8.8 ZP
36	M8 HD FLAT WASHER	M8 FLAT WASHER - High Tensile 19x8x1.9mm
2	M12X40	Bolt Hex, M12X40X1.75, GR8.8 ZP
2	M12 FW LHD	M12 FW Large Heavy Duty
6	M8 X 30 HEX	Bolt Hex, M8X30X1.25, GR8.8 ZP
16	M10 x 25	Bolt Hex, M10X25x[1.5], GR8.8 ZP
16	M10 FLANGE NUT	Flange Nut, M10x1.5 G8.8 ZP

Step Kit Small Parts – Contained in Small Parts Kit Bag

Qty	Part Number	Description
24	M8 FLAT WASHER- BLACK ZINC	M8 FW- BLACK ZINC
24	M8 NUT	Hex Nut, M8x1.25 G8.8 ZP
12	M8 X 20 BHCS BLACK ZINC	SCREW, BUTTON HEAD CAP, M8X20X1.25 BLACK ZP
12	M8X20 CAP SCREW	CAP SCREW, M8X20X1.25 GR10.9 ZP
4	M6 FLAT WASHER BLACK ZINC	M6 FW BLACK ZP
4	M6CN3MM	CAGE NUT M6x2.6-3.5
4	M6x16 BHCS BLACK ZINC	SCREW, BUTTON HEAD CAP, M6X16X1 GR12.9 BLACK ZP
8	M10X15 BHCS	SCREW, BUTTON HEAD CAP, M10X16X1.5 GR12.9 ZP
8	M10 NUT	Hex Nut, M10x1.5 G8.8 ZP
8	M10 Flat Washer	M10 FW

TOOLS REQUIRED


The following tools will be required to install the product.

Hand Tools	Power Tools	Workshop Equipment
Metric Socket Set 8-19mm Socket Extension Bar Metric Spanner Set 10-19mm Hex (Allen) Key Set 4-6mm Flat Blade Screwdriver set Phillips Head Screwdriver set Utility Knife Side Cutters Pliers	Electric/Air Impact Driver (Optional)	Hydraulic Floor Jack

WORKSHOP SAFETY

It is the responsibility of the installer to always complete works in a safe manner. Make sure the following safety equipment is available and precautions are observed whilst fitting this product.

<p>Hearing Protection</p> 	<p>Always wear ear protection when using power tools.</p>
<p>Eye Protection</p> 	<p>Ensure eye protection is always worn when cutting or drilling.</p>
<p>Manual Handling</p> 	<p>Do not attempt to lift bar assemblies or rock sliders on your own.</p> <p>Always use two people to lift or use mechanical Lifting aid such as hydraulic lifting trolley.</p>
<p>Vehicle Support</p> 	<p>Always ensure vehicle is properly supported when working on it. Do not attempt to fit products whilst suspension work is being carried out. Do not work under a vehicle supported only by a jack.</p>



2x Bolts 3x Places

Release Clip

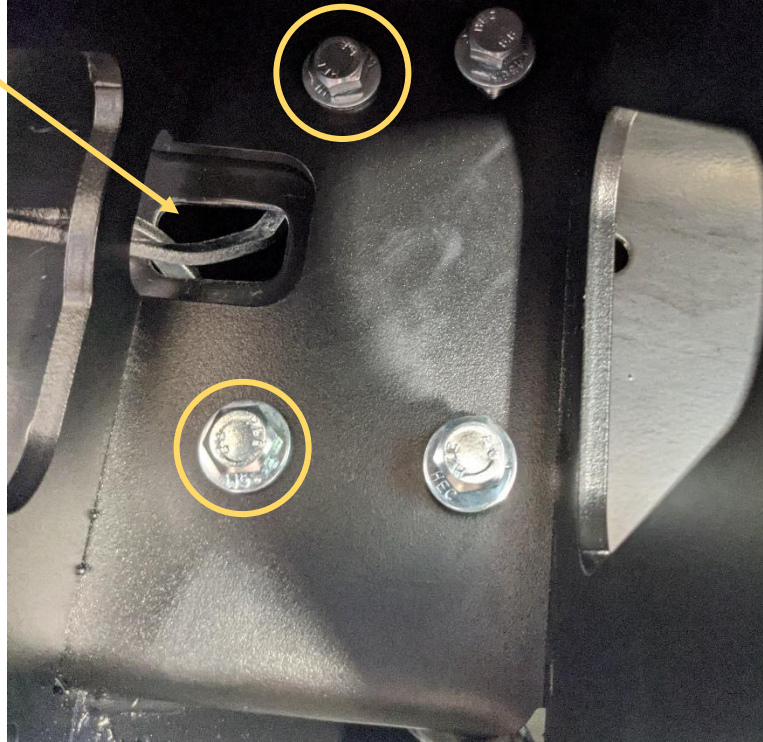
<ol style="list-style-type: none">1. Remove Factory side steps if fitted by removing the 6x Bolts (2 Per mount) securing them to the body using a 12mm socket.2. Release the clip that secures the wiring harness to the center mount. On VX models disconnect this harness too.3. Discard Factory steps and bolts.	TOOLS REQUIRED 12mm socket
	FASTENERS 6x Factory Flange head Bolts (per side)



<div>4. Locate the factory M8 threaded points in the chassis that will be used for the front mounts, as shown in photo above</div> <div>5. Run an M8 bolt through the threaded points completely to ensure bolt runs freely. These points can be full of mud / dirt or tight from factory.</div>	<div>TOOLS REQUIRED</div> <div>13mm Socket / Spanner</div>
	<div>FASTENERS</div> <div>M8x20 Bolt</div>



6. Fit the front mount, to the chassis using M8x20 bolts, HD flat washers, Secure finger tight only at this stage	TOOLS REQUIRED
	FASTENERS M8x20 Bolt M8 HD Flat Washer



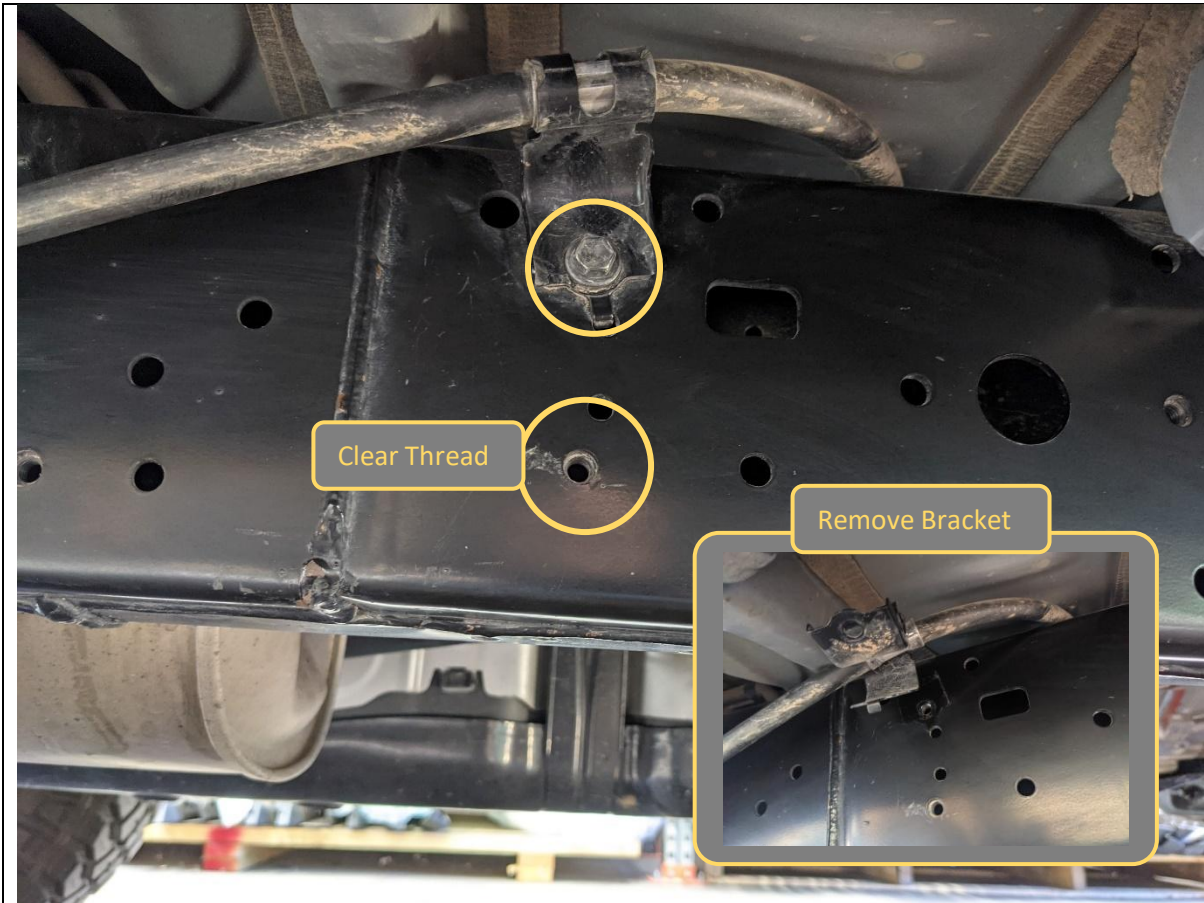
7. Fit the other two M8 bolts, using M8x30 Bolts, M8 HD flat washers and M8 Lollipop nut plates.
8. Insert the nut plates through the slotted hole in the chassis.
9. Tighten only finger tight at this stage.

TOOLS REQUIRED**FASTENERS**

M8x30 Bolt
M8 HD Flat Washer
M8 Lollipop Nut Plates



<div>10. Secure the front mount to the chassis crossmember using M12x40 Bolt M12 Large washer and M12 Lollipop Nut plate.</div> <div>11. Tighten all bolts on front mount.</div> <div>12. Repeat front mount fitment on other side of the vehicle.</div>	<div>TOOLS REQUIRED</div> <div>13mm Socket / Spanner 18mm Socket / Spanner</div>
	<div>FASTENERS</div> <div>M12x40 Bolt M12 flat washer M12 Nut Plate</div>



13. Remove factory M8 bolt securing handbrake cable bracket at rear of chassis above spring hanger. Discard Factory Bolt.
14. Remove and discard the bracket on the handbrake cable by levering it off.
15. Run an M8 Bolt through the threads in the chassis like for points in front mount to clear threads.

TOOLS REQUIRED


12mm Spanner / Socket
13mm Spanner / Socket

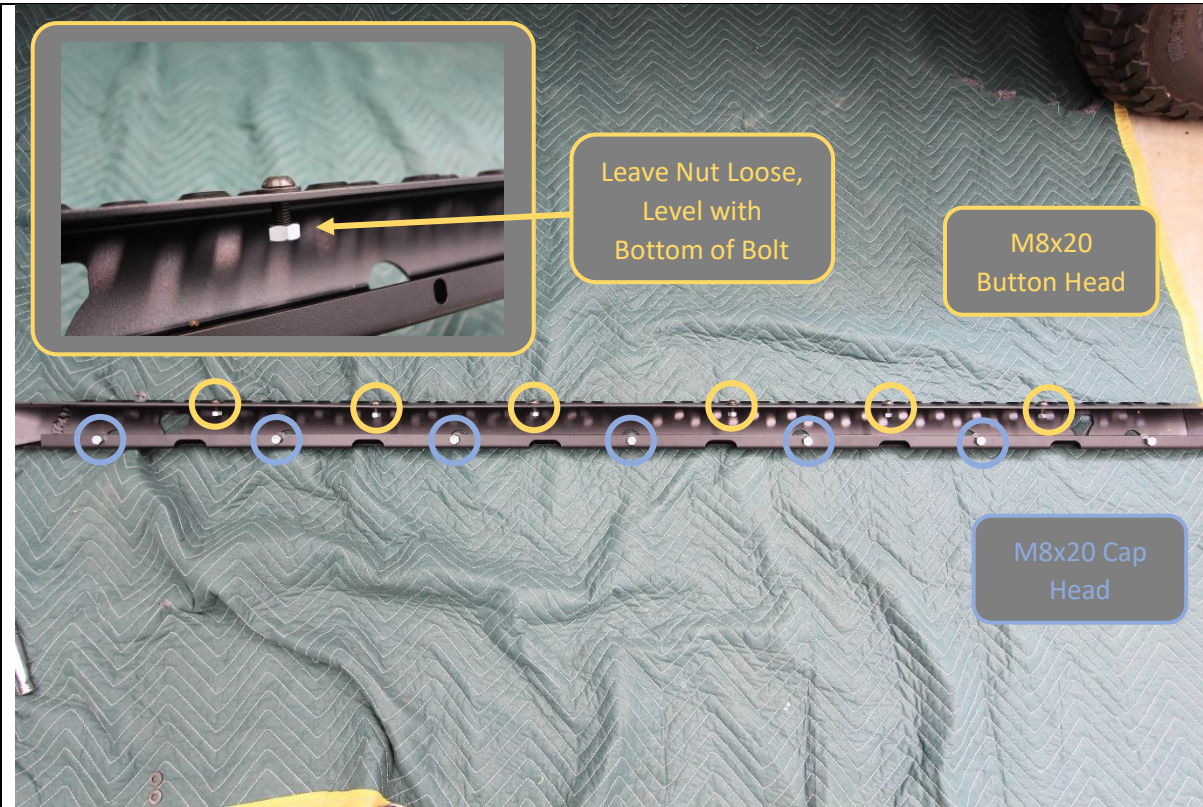
FASTENERS

M8x30 Bolt



<div>16. Fit the rear mount to the chassis threaded points Using M8x20 bolts for top and bottom flange, and M8x30 for middle.</div> <div>17. On LHS of car bottom point has a threaded insert in the chassis.</div>	<div>TOOLS REQUIRED</div> <div>13mm Spanner / Socket</div>
	<div>FASTENERS</div> <div>M8x20 Bolt M8x30 Bolt M8 HD Flat Washers</div>

	
<p>18. For RHS of car there is no threaded insert, insert</p> <p>19. Use M8 Lollipop nut plate, inserted through slot on inside of chassis rail to pickup this point.</p> <p>20. Use image to guide bending of nut plate to assist.</p> <p>21. Tighten All bolts on bottom mounts.</p>	TOOLS REQUIRED 13mm Spanner / Socket
	FASTENERS M8x30 Bolt M8 HD Flat Washer M8 Lollypop Nut Plates



<p>22. Prepare step plate by loosely pre fitting the fasteners to the step.</p> <p>23. Use M8x20 black button head screws, black M8 washers and M8 Nuts on 6x locations on top of step as shown.</p> <p>24. Use M8x20 cap head screws M8 washers and M8 nuts on 7x locations on bottom side of step.</p>	<p>TOOLS REQUIRED</p>
<p>NOTE THERE ARE 2 WAYS TO FIT THE STEP ON THE EXTRUSION, IF YOU FIND THIS WAY DIFFICULT SKIP STEP 22-26 AND GO TO STEP 27-32</p>	<p>FASTENERS</p> <p>6x M8x20 Black Button Head</p> <p>7xM8x20 Cap Head</p> <p>13x M8 Black Washer</p> <p>13x M8 Nut</p>



<p>25. Slide the step plate onto the main slider structural extrusion. Align the nuts as they enter the T Slots on the extrusion.</p> <p>26. Center the Step on the extrusion, by measuring distance from extrusion to tip of step, and adjusting until both sides are equal.</p>	TOOLS REQUIRED
	FASTENERS



27. Lie extrusion down and place step on top.

28. Feed nut into slot with something long and skinny (like a dowl or piece of all thread). Do centre ones first the move outwards.

TOOLS REQUIRED

Long dowel or skinny stick

FASTENERS



29. Thread cap screws into each hole.

TOOLS REQUIRED

6mm Allen Key

FASTENERS

M8 x 20 Cap screws (7)
M8 hex nuts (7)
M8 flat washers (7)



<p>30. Flip entire slider up as shown.</p> <p>31. Clamp step hard to extrusion</p>	<p>TOOLS REQUIRED</p> <p>Clamps</p>
	<p>FASTENERS</p>



32. Using long tool feed nuts in to centre first and thread in with black M8 button head cap screws and washers.

TOOLS REQUIRED

5mm Allen key

FASTENERS

M8 x 20 BHCS black (8)
M8 hex nuts (8)
M8 flat washer black (8)



33. Fit Cage nut to square hole in top of end cap. Use a flat blade screwdriver to assist if required.
34. First slide 2x M10 Nuts into the T slots on back side of extrusion.
35. Fit end cap over these nuts.
36. Secure with M10x16 Button Head Screws into Nuts and M6x20 bolt in top, through tread plate. End cap should align with end of tread plate if tread plate is centered correctly.

TOOLS REQUIRED

Flat blade Screwdriver

FASTENERS

2x M10x16 Button Head
1x M6x20 Button Head
bolt
1xM6Flat Washer
2x M10 Nut
1x M6 Cage Nut



37. Slide the 8x M10x25 Hex bolts into the T slots on back side of extrusion. 4 bolts per slot.

38. Loosely arrange the bolts in 2x groups of 4, in approximate location of mounts, as shown.

TOOLS REQUIRED**FASTENERS**

8x M10x25 Hex bolts



<div>39. Fit mirrored end cap to remaining end of slider, using 2x M10x16 Button bolts and M6x20 Button head bolt with flat washer as per previous steps 34-36.</div> <div>40. Check alignment of end caps, End cap should align with edge of tread plate if properly centered. Adjust end cap / tread plate position as required.</div> <div>41. Once happy with alignment tighten all bolts on slider extrusion, using 5/6MM hex key.</div>	<div>TOOLS REQUIRED</div> <div>5mm Hex key 6mm Hex key</div>
	<div>FASTENERS</div> <div>2x M10x16 Button Head 1x M6x20 Button Head bolt 1xM6 Flat Washer 2x M10 Nut</div>



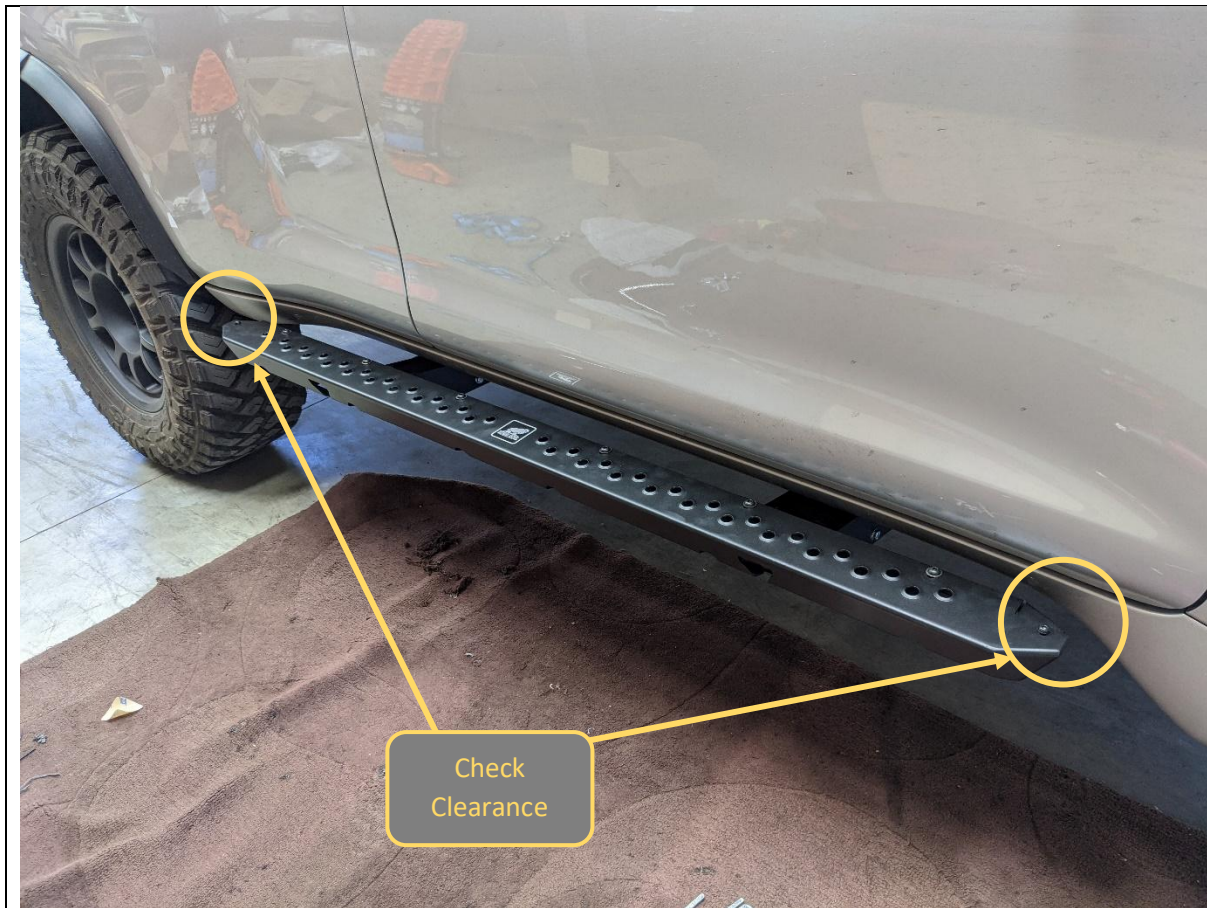
42. With Assistance from another person, or mechanical lifting aid such as a lift trolley, Lift the slider onto the mounts.
43. Manipulation of position of bolts in T slot to align with mounts will be required to get slider on. Secure with M10 Flange Nuts

TOOLS REQUIRED

5mm Hex key
6mm Hex key
15mm spanner

FASTENERS

8x M10 Flange Nut



44. Adjust fore / aft position of sliders on mounts to achieve even appearance if required.

45. Take care to ensure adequate clearance where panel curves toward wheel at front end, near end cap.

TOOLS REQUIRED

18mm Socket / Spanner
13mm Socket / Spanner

FASTENERS



46. Tighten all mount to slider M10 flange nuts using 15mm spanner. A ratcheting spanner or socket makes this process easier	TOOLS REQUIRED 15mm Socket / Spanner
	FASTENERS



47. Secure Hand Brake cable and under step wiring harness with cable ties as shown in images.	TOOLS REQUIRED 15mm Socket / Spanner
	FASTENERS



48. Check all fasteners Securing the mounts to the chassis rail are tight.

49. Fit the bottom Braces to the mounts using M8x20 Bolts and Flat washers

TOOLS REQUIRED

13mm Socket / Spanner

FASTENERS

12xM8x20 Bolt
12xM8x20 Flat washer

Per Side



50. Fit the Offroad Animal logo plate to the small gap between pierced features on tread plate, using the pre applied double sided adhesive.

51. After that you are done!

TOOLS REQUIRED**FASTENERS**



Congratulations!
Head for the tracks and enjoy your newly protected Prado!