



## Toyota LandCruiser 70 Series MY24+ Facelift Predator & Toro Front Bar Fitting Instruction

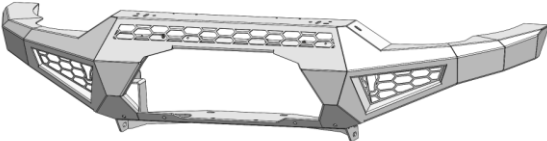
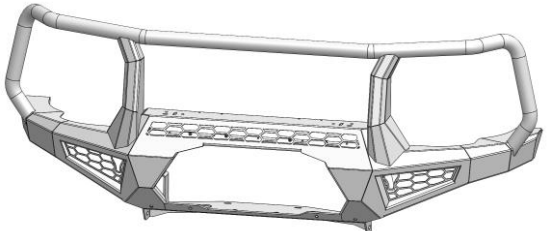


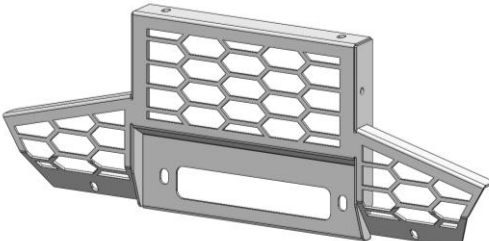
### **IMPORTANT! – READ BEFORE INSTALLATION**

- When installed in accordance with these instructions, the front protection bar does not affect the operation of the vehicles SRS airbags.
- This product must be installed exactly as per these instructions using only hardware supplied.
- Take a few moments to read instructions thoroughly before beginning work.
- In the event of damage to any bar component please contact OFFROAD ANIMAL to arrange repair/replacement of components.
- Do not use this product for any vehicle make or model other than that specified on these instructions.
- Do not remove labels from this product.
- This product and its fixings must not be modified in any way unless stated in these fitting instructions.
- The installation of this product is recommended for trained personnel.
- These instructions are correct at time of publication. OFFROAD ANIMAL cannot be held responsible for the impact of any changes subsequently made by the vehicle manufacturer. If you find something has changed, please contact us to let us know!
- During installation it is the duty of the installer to check correct operation/clearances of all components.
- If Instructions are to be printed for reference in the workshop, it is recommended that they are printed in colour, for best legibility.

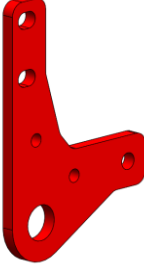
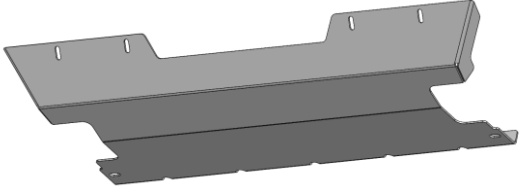


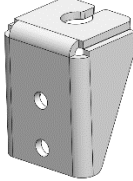
# PARTS LISTING

**IMPORTANT:** Check all parts are present before beginning work! Contact OFFROAD ANIMAL if something is missing.

## Parts List

Qty	Part Number	Description	Image
<b>PREDATOR ONLY</b>			
<b>1</b>	FB-TLC-70-24-PR-ASM1	LC70 24+ Predator Bar Weldment	
<b>TORO ONLY</b>			
<b>1</b>	FB-TLC-70-24-TOR-ASM1	LC70 24+ Toro Bar Weldment	
<b>1</b>	FB-TLC-70-07-PR-ASM2R	70 Series Front Mount Assy	
<b>1</b>	FB-TLC-70-07-PR-ASM2L	70 Series Front Mount Assy	
<b>1</b>	FB-TLC-70-24-PR-ASM2	LC70 24+ Mesh Fairlead Welded Assy	

1	B-0822	WL Predator Number Plate Bracket	
2	B-1167	LC70 24+ Pan Brace	
1	B-1168R	LC70 24+ Fog Light Bracket	
1	B-1168L	LC70 24+ Fog Light Bracket	
2	B-1169	Wing Mesh Light Bracket	
2	P-0024	Ranger tow point spacer	
2	P-0080	LC70 Front Bar - Tow Spacer	

2	P-0081	LC70 Front Bar - Tow Outer	
1	U-0079	LC70 24+ Bash Plate	
1	FB-R25-DJ2-19-PR-ADRCP	ADR Compliance Plate RAM 2500 DJ2	
1	OFA-LOGO	Offroad Animal Metal Logo	
1	FI Note	Fitting Instruction Note	N/A
<b>TORO ONLY</b>			
2	B-0649	Toro Antenna Bracket – 90 Degree Tall	

**PREDATOR Fasteners – Contained in Small Parts Kit Bag**

Qty	Part Number	Description
24	M6x16 BHCS BLACK ZINC	SCREW, BUTTON HEAD CAP, M6X16X1 GR12.9, ISO4042 ZnNi BLACK PASSIVATED FINISH
24	M6 FLAT WASHER BLACK ZINC	M6 Flat Washer, 12x6.1x1, ISO4042 ZnNi BLACK PASSIVATED FINISH
14	M6 FLANGE NUT	Flange Nut, M6x1 G8.8 ZP
2	M8 X 20 HEX	Bolt Hex, M8X20x1.25, GR8.8 ZP
2	M8 X 16 BHCS BZP	SCREW, BUTTON HEAD CAP, M8X16X1.25 GR12.9, ISO4042 ZnNi BLACK PASSIVATED FINISH
6	M8 X 25 BHCS BLACK ZINC	SCREW, BUTTON HEAD CAP, M8X25X1.25, ISO4042 ZnNi BLACK PASSIVATED FINISH
2	M8 FLAT WASHER	M8 FW
8	M8 FLAT WASHER- BLACK ZINC	M8 FLAT WASHER, 16.5x8.4x1.2, ISO4042 ZnNi BLACK PASSIVATED FINISH
2	M8 HD FLAT WASHER	M8 FLAT WASHER - High Tensile 19x8x1.9mm
2	M8 NYW	Washer, M8, Nylon
2	M8 NYLOC	NYLOC SELF LOCKING NUT, ST STL A2 ISO
4	M10 X 40	Bolt Hex, M10X40X1.5, GR8.8 ZP
4	M10X30X1.25	Bolt Hex, M10X30X1.25, GR8.8 ZP
4	M10X40X1.25	Bolt Hex, M10X40X1.25, GR8.8 ZP
2	M10X50X1.25	Bolt Hex, M10X50X1.25, GR8.8 ZP
2	M10X20 BHCS	SCREW, BUTTON HEAD CAP, M10X20X1.5 GR12.9 ZP
2	M10 Flat Washer	M10 FW
14	M10 FW LHD	WASHER, FLAT M10X28.5X2.5
6	M10 FLANGE NUT	Flange Nut, M10x1.5 G8.8 ZP
8	M12X30	Bolt Hex, M12X30x1.75, GR8.8 ZP
2	M12X40	Bolt Hex, M12X40x1.75, GR8.8 ZP
2	M12X125 GR10.9	Bolt Hex, M12X125x1.75, GR10.9 ZP
14	M12 FW LHD	M12 FW Large Heavy Duty
10	M12 FLANGE NUT	Flange Nut, M12x1.75 G8.8 ZP
2	M12 Nyloc nut	M12 NYLOC NUT

**TORO Fasteners – Contained in Small Parts Kit Bag**

Qty	Part Number	Description
24	M6x16 BHCS BLACK ZINC	SCREW, BUTTON HEAD CAP, M6X16X1 GR12.9, ISO4042 ZnNi BLACK PASSIVATED FINISH
24	M6 FLAT WASHER BLACK ZINC	M6 Flat Washer, 12x6.1x1, ISO4042 ZnNi BLACK PASSIVATED FINISH
14	M6 FLANGE NUT	Flange Nut, M6x1 G8.8 ZP
2	M8 X 20 HEX	Bolt Hex, M8X20x1.25, GR8.8 ZP
2	M8 X 16 BHCS BZP	SCREW, BUTTON HEAD CAP, M8X16X1.25 GR12.9, ISO4042 ZnNi BLACK PASSIVATED FINISH
10	M8 X 25 BHCS BLACK ZINC	SCREW, BUTTON HEAD CAP, M8X25X1.25, ISO4042 ZnNi BLACK PASSIVATED FINISH
2	M8 FLAT WASHER	M8 FW
12	M8 FLAT WASHER- BLACK ZINC	M8 FLAT WASHER, 16.5x8.4x1.2, ISO4042 ZnNi BLACK PASSIVATED FINISH
2	M8 HD FLAT WASHER	M8 FLAT WASHER - High Tensile 19x8x1.9mm
2	M8 NYW	Washer, M8, Nylon
2	M8 NYLOC	NYLOC SELF LOCKING NUT, ST STL A2 ISO
4	M10 X 40	Bolt Hex, M10X40X1.5, GR8.8 ZP
4	M10X30X1.25	Bolt Hex, M10X30X1.25, GR8.8 ZP
4	M10X40X1.25	Bolt Hex, M10X40X1.25, GR8.8 ZP
2	M10X50X1.25	Bolt Hex, M10X50X1.25, GR8.8 ZP
2	M10X20 BHCS	SCREW, BUTTON HEAD CAP, M10X20X1.5 GR12.9 ZP
2	M10 Flat Washer	M10 FW
14	M10 FW LHD	WASHER, FLAT M10X28.5X2.5
6	M10 FLANGE NUT	Flange Nut, M10x1.5 G8.8 ZP
8	M12X30	Bolt Hex, M12X30x1.75, GR8.8 ZP
2	M12X40	Bolt Hex, M12X40x1.75, GR8.8 ZP
2	M12X125 GR10.9	Bolt Hex, M12X125x1.75, GR10.9 ZP
14	M12 FW LHD	M12 FW Large Heavy Duty
10	M12 FLANGE NUT	Flange Nut, M12x1.75 G8.8 ZP
2	M12 Nyloc nut	M12 NYLOC NUT

# TOOLS REQUIRED

The following tools will be required to install the product.

<b>Hand Tools</b>	<b>Power Tools</b>	<b>Workshop Equipment</b>
Metric Socket Set 10-19mm	Electric/Air Impact Driver (Optional)	Cable Ties
Socket Extension Bar		Lifting Trolley (Optional)
Breaker Bar		
Metric Spanner Set 10-19mm		
Hex (Allen) Key Set 4-6mm		
Trim Removal Tool		
Flat Blade Screwdriver Set		
Phillips Head Screwdriver Set		

# WORKSHOP SAFETY

It is the responsibility of the installer to always complete works in a safe manner. Make sure the following safety equipment is available and precautions are observed whilst fitting this product.

<p>Hearing Protection</p> 	<p>Always wear ear protection when using power tools.</p>
<p>Eye Protection</p> 	<p>Ensure eye protection is always worn when cutting or drilling.</p>
<p>Manual Handling</p> 	<p>Do not attempt to lift bar assemblies or rock sliders on your own.</p> <p>Always use two people to lift or use mechanical Lifting aid such as hydraulic lifting trolley.</p>
<p>Vehicle Support</p> 	<p>Always ensure vehicle is properly supported when working on it. Do not attempt to fit products whilst suspension work is being carried out. Do not work under a vehicle supported only by a jack.</p>





1. Remove the number plate and set aside.

**TOOLS REQUIRED**

**FASTENERS**



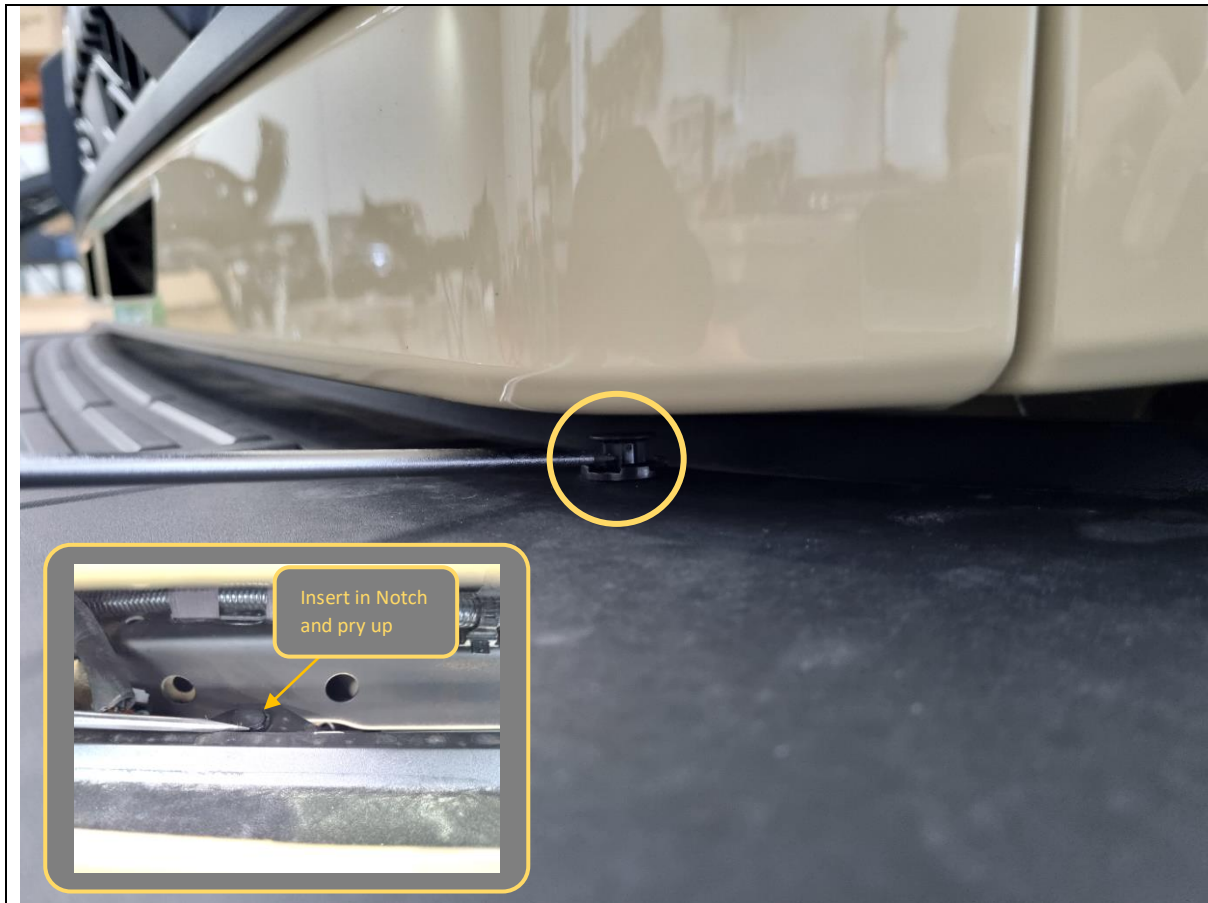
2. Remove 1x 10mm hex nut on the outer tip of the plastic bumper, per side.

**TOOLS REQUIRED**

10mm socket/spanner

**FASTENERS**

2x 10mm factory hex nuts



3. Remove 5x plastic push clips along the top of the plastic bumper. 3x of them are found through the opening in the grille fascia.

**TOOLS REQUIRED**

Trim tool  
Or  
Flat blade screwdriver

**FASTENERS**

5x plastic push clips



4. Remove 4x 10mm hex bolts along the underside of the plastic bumper.

**TOOLS REQUIRED**

10mm socket/spanner

**FASTENERS**

4x 10mm factory hex bolts



5. On the inside RH driver side wheel well, remove 1x plastic push clip holding the plastic cover for the bumper harness plug.

**TOOLS REQUIRED**

Trim tool  
or  
Flat blade screwdriver

**FASTENERS**

1x plastic push clips



6. Remove the plastic cover, then unplug the bumper harness.

**TOOLS REQUIRED**

**FASTENERS**



7. The bumper is now fully loose. Pull outwards and remove from vehicle.

**TOOLS REQUIRED**

**FASTENERS**



8. Remove the 4x 14mm hex bolts on the metal top panel.

**TOOLS REQUIRED**

14mm socket/spanner

**FASTENERS**

4x 14mm factory hex bolts





9. Remove 1x 12mm hex nut on the bottom of the metal top panel, per side.

**TOOLS REQUIRED**

12mm socket/spanner

**FASTENERS**

2x 12mm factory hex nuts



- 10. Remove 2x 12mm hex bolts on the metal top panel near the headlight, per side.
- 11. Fully remove the metal top panel.

**TOOLS REQUIRED**

12mm socket/spanner

**FASTENERS**

4x 12mm factory hex bolts



12. Remove 2x 17mm hex bolts and nuts holding the metal top panel supports, per side.

**Retain these bolts if fitting on single cab vehicle.**

13. Remove both metal top panel supports.

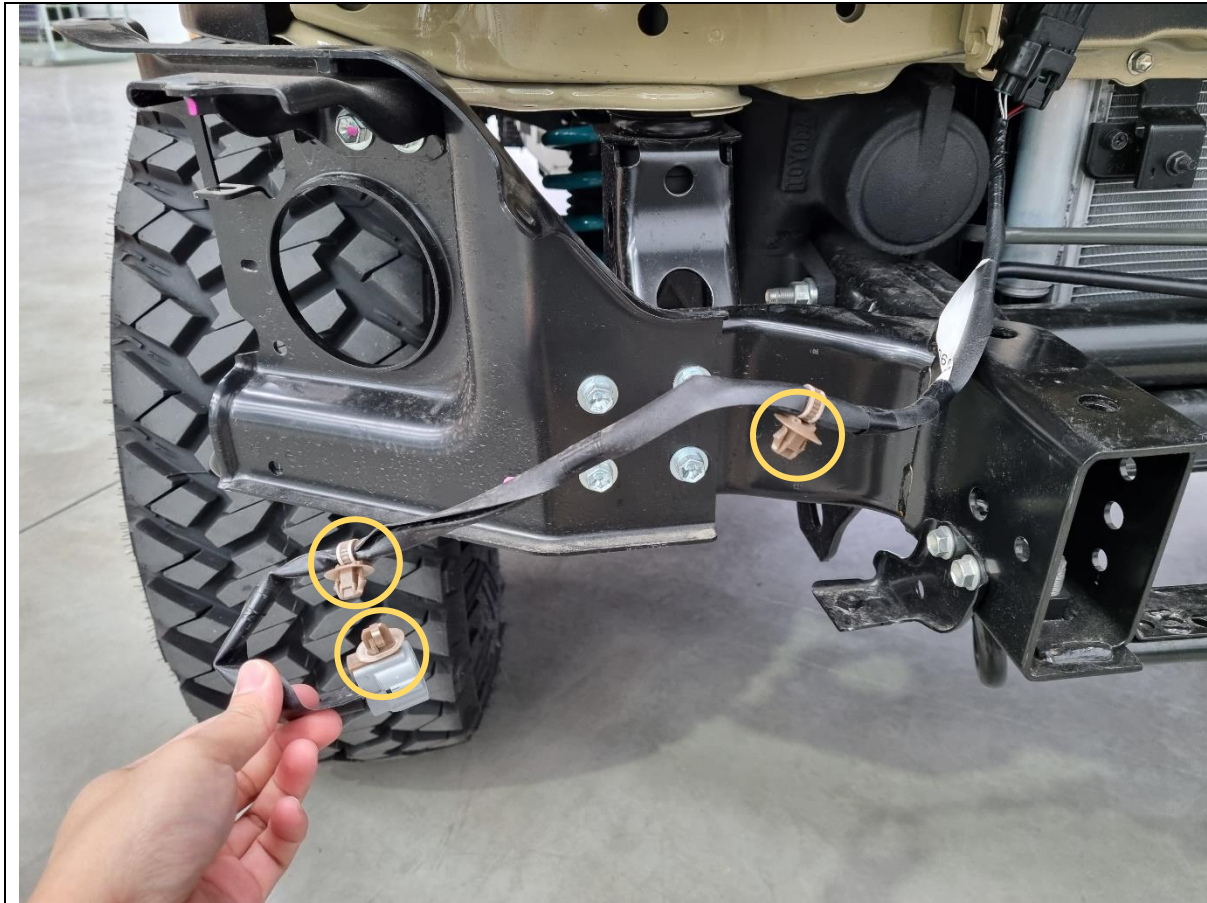
**TOOLS REQUIRED**

17mm socket/spanner

**FASTENERS**

4x factory 17mm hex bolts and nuts

**Retain for single cab vehicles**

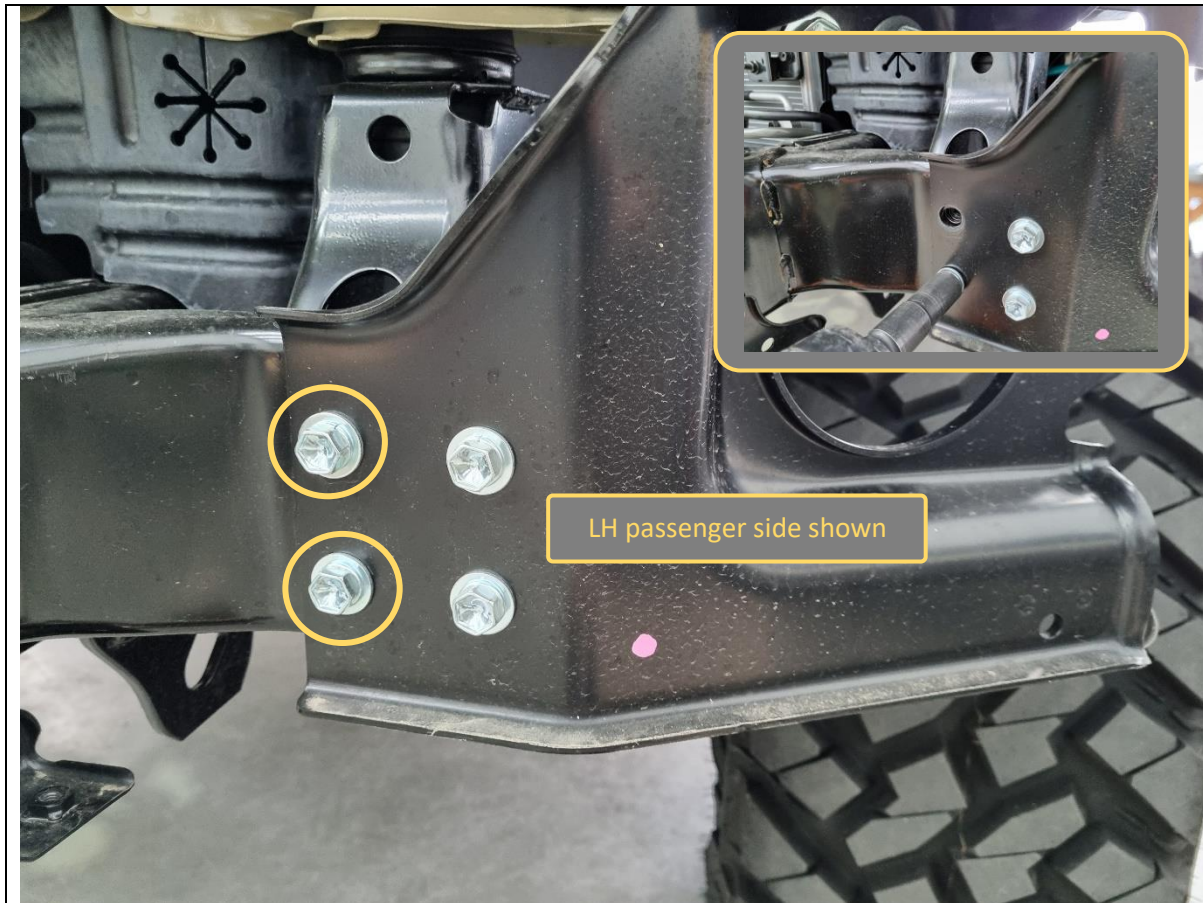


14. Unclip the bumper harness from the main impact bar.

**TOOLS REQUIRED**

Trim tool  
or  
Flat blade screwdriver

**FASTENERS**



15. Remove the 2x 14mm hex bolts on the outer ends of the main impact bar, closest to the chassis rails (i.e. middle of the car).

16. Repeat on other side.

**TOOLS REQUIRED**

14mm socket/spanner

**FASTENERS**

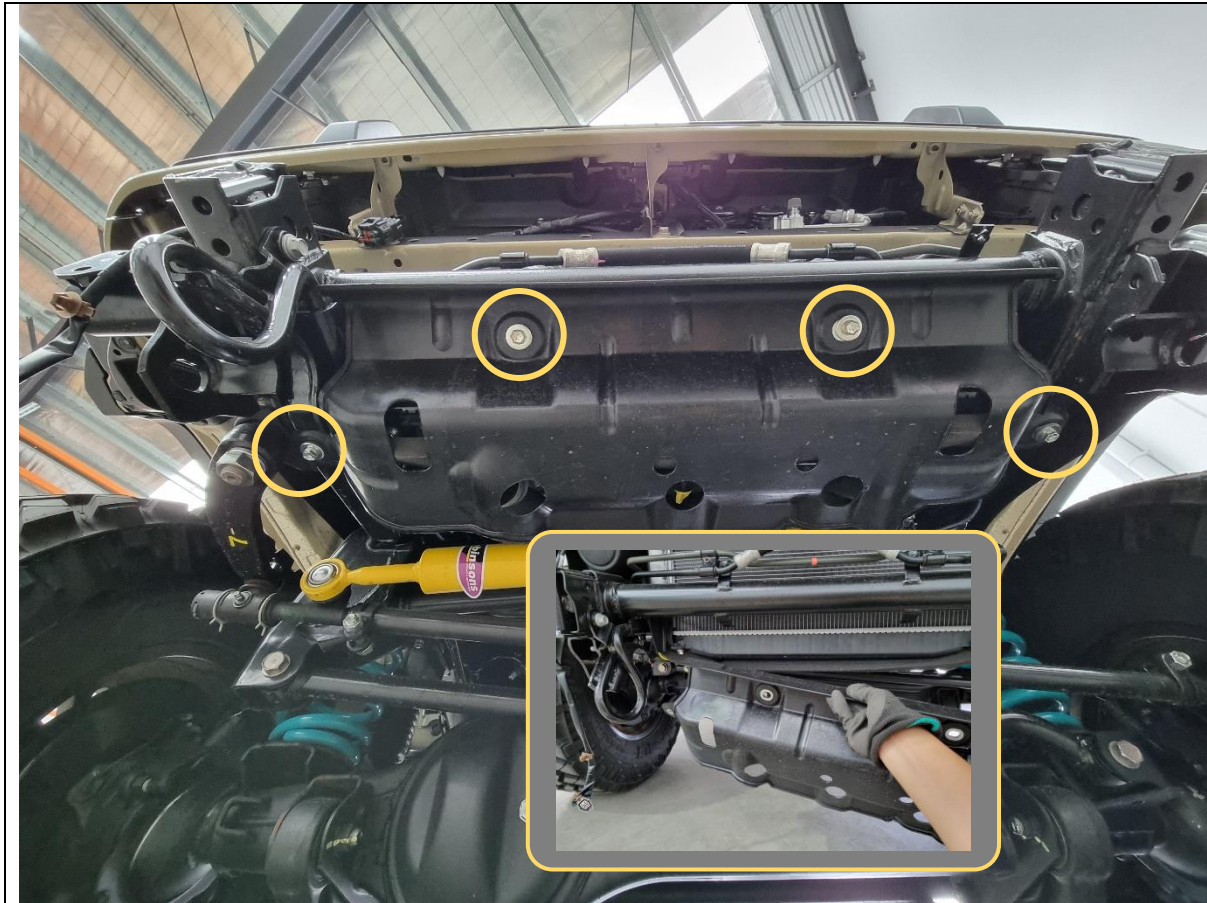
4x 14mm factory hex bolts



17. Remove the main impact bar from the vehicle.

**TOOLS REQUIRED**

**FASTENERS**



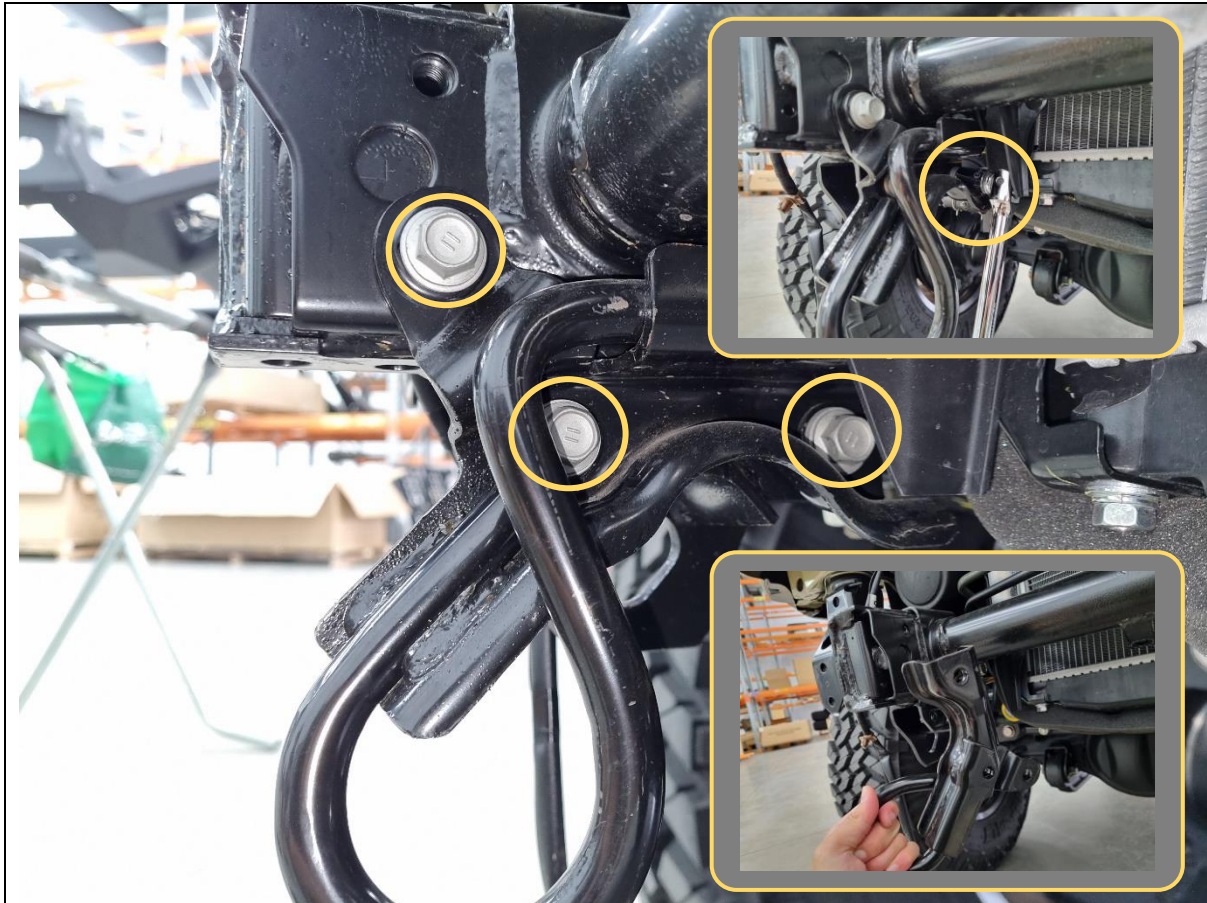
- 18. Remove the 4x 12mm hex bolts holding the plastic splash shield.
- 19. Remove the plastic splash shield.

**TOOLS REQUIRED**

12mm socket/spanner

**FASTENERS**

4x 12mm factory hex bolts



20. Remove the 3x 14mm hex bolts holding the factory tow hook.

Note: Use a breaker bar or long spanner for rear most bolt.

**TOOLS REQUIRED**

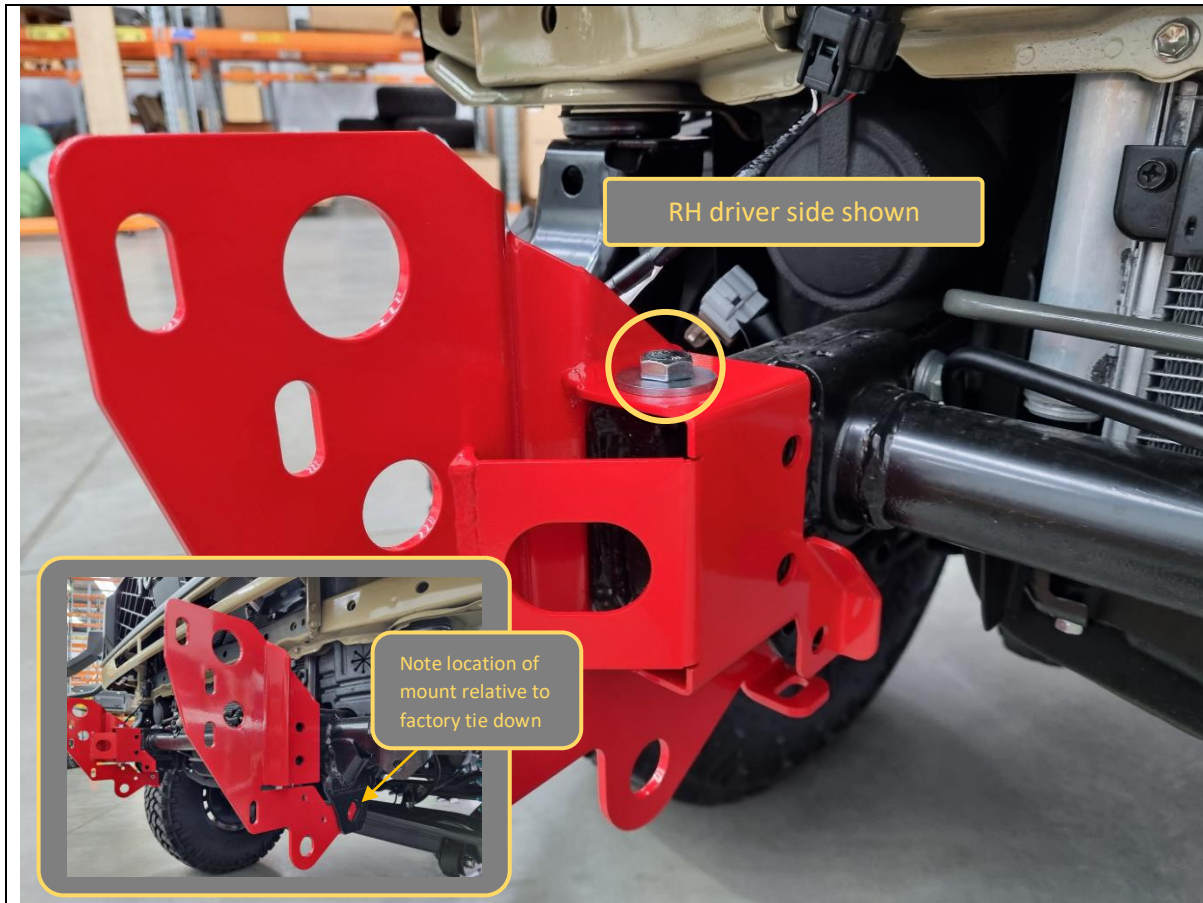
14mm socket/spanner

Breaker bar

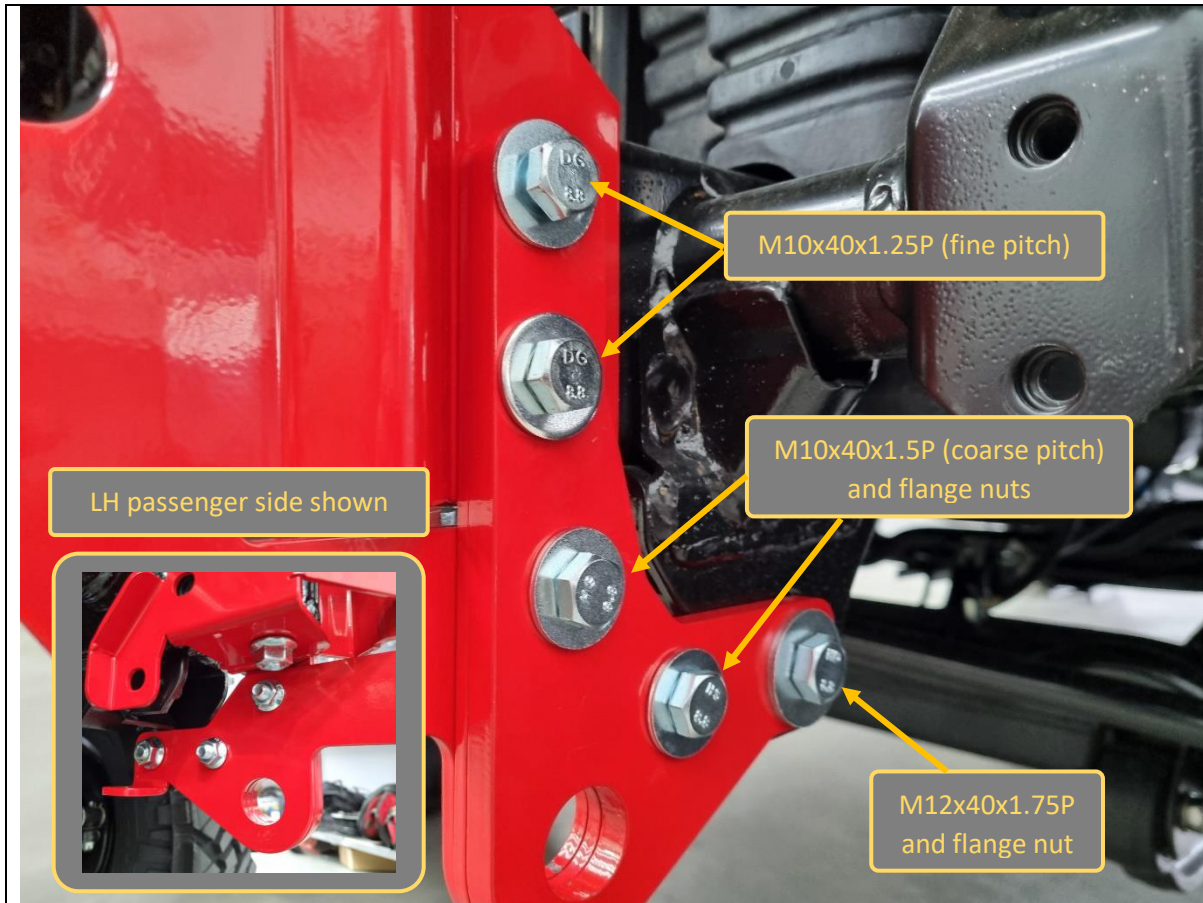
**FASTENERS**

3x 14mm factory hex bolts

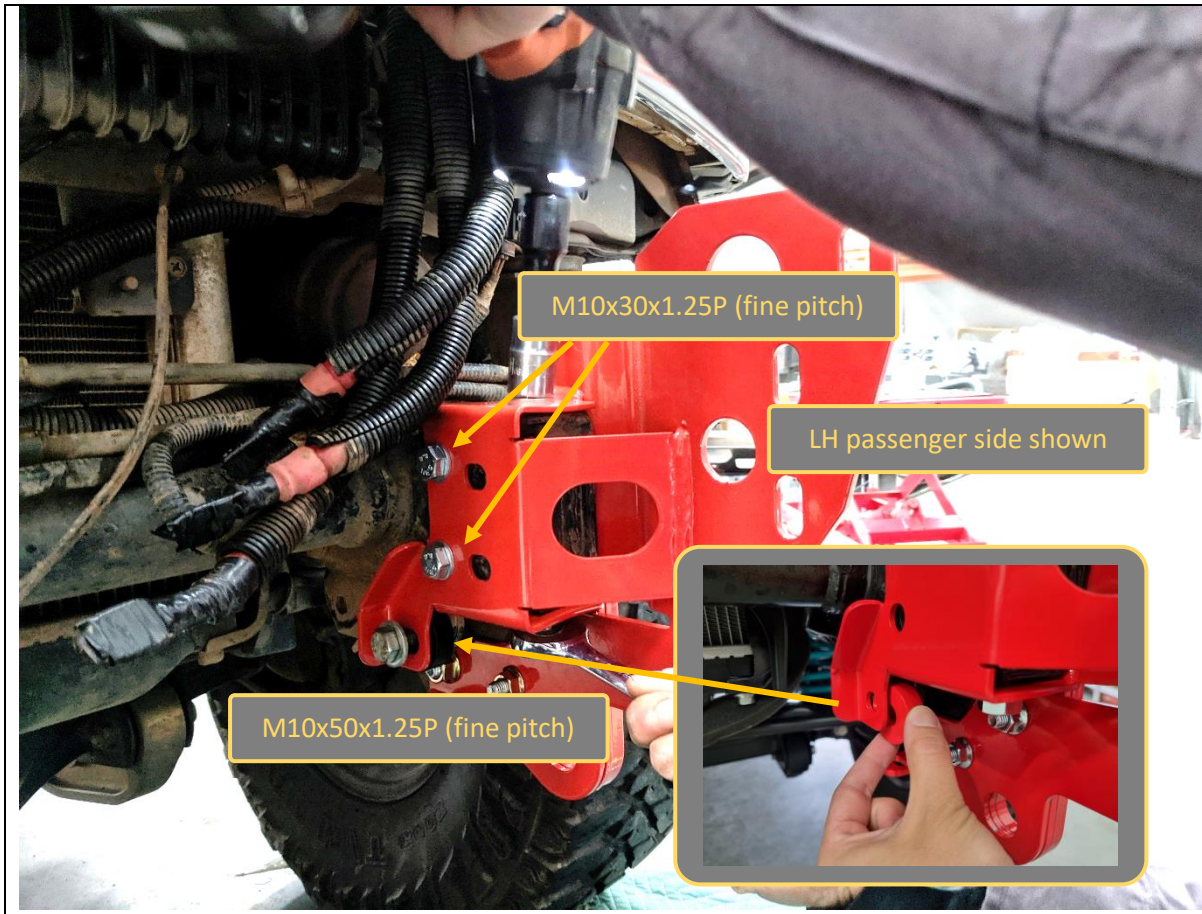




<p>21. Fit the impact assembly to the end of the chassis rail.</p> <p><b>If fitting to a single cab vehicle, refer to FB-TLC-70-17-PR-ASM4 single cab mount instructions and proceed to Step 32 once installed.</b></p>	<p><b>TOOLS REQUIRED</b></p>
<p>22. Insert 1x M12x125 hex bolt and heavy duty washer through the top of the mount and secure with 1x M12 flange nut.</p> <p>Leave finger tight at this stage.</p> <p>23. Repeat for other side.</p>	<p><b>FASTENERS</b></p> <p>2x M12x125 hex bolt 2x M12 heavy duty washer 2x M12 flange nut</p>



<p>24. Align P-0080 tow spacer plate and P-0081 tow outer plate onto the outside of the impact assembly.</p> <p>25. Loosely secure to the chassis with 2x M10x40x1.25P (fine pitch) bolts and heavy duty washers. Take care not to cross thread the nuts in the chassis.</p>	<p><b>TOOLS REQUIRED</b></p> <p>16/17/18/19mm socket/spanner</p>
<p>26. Loosely secure to the impact assembly with 2x M10x40x1.5P (coarse pitch) bolts, heavy duty washers and flange nuts.</p> <p>27. Loosely secure to the impact assembly with 1x M12x40x1.75P bolt, heavy duty washer and flange nut.</p> <p>28. Repeat for other side.</p>	<p><b>FASTENERS</b></p> <p>4x M10x40x1.25P (fine pitch) bolts                  4x M10x40x1.5P (coarse pitch) bolts                  8x M10 heavy duty washers                  4x M10 flange nuts</p> <p>2x M12x40x1.75P bolts                  2x M12 heavy duty washers                  2x M12 flange nuts</p>



29. Loosely secure the inside of the impact assembly to the chassis with 2x M10x30x1.25P (fine pitch) bolts and heavy duty washers. Again, take care not to cross thread the nuts in the chassis.
30. Insert 1x P-0024 tow point spacer between the inside rear hole of the impact assembly and chassis.
31. Loosely secure to the chassis with 1x M10x50x1.25P (fine pitch) bolt and heavy duty washer. Take care not to cross thread the nut in the chassis.
32. Repeat for the other side.

**Important:** Leave mounts loose until after the bullbar is fitted to the vehicle.

**TOOLS REQUIRED**

16/17/18/19mm socket spanner

**FASTENERS**

4x M10x30x1.25P (fine pitch) bolts  
2x M10x50x1.25P (fine pitch) bolts  
6x M10 heavy duty washers  
2x P-0024 tow point spacers



- 33. Prepare the bumper for stripping fog light and loom (if equipped, otherwise skip to Step 43)
- 34. Unclip the plastic covers on the inside of the bumper to reveal the fog lights.
- 35. Unplug the fog lights.

**TOOLS REQUIRED**

**FASTENERS**



36. Remove 3x Phillips head screws holding each fog light and set aside.

**TOOLS REQUIRED**

Phillips head screwdriver

**FASTENERS**

8x factory Phillips head screws



37. Unclip the loom from the bumper.

**TOOLS REQUIRED**

Trim tool  
or  
Flat blade screwdriver

**FASTENERS**



38. Fit the pair of fog lights to the supplied fog light brackets as shown.

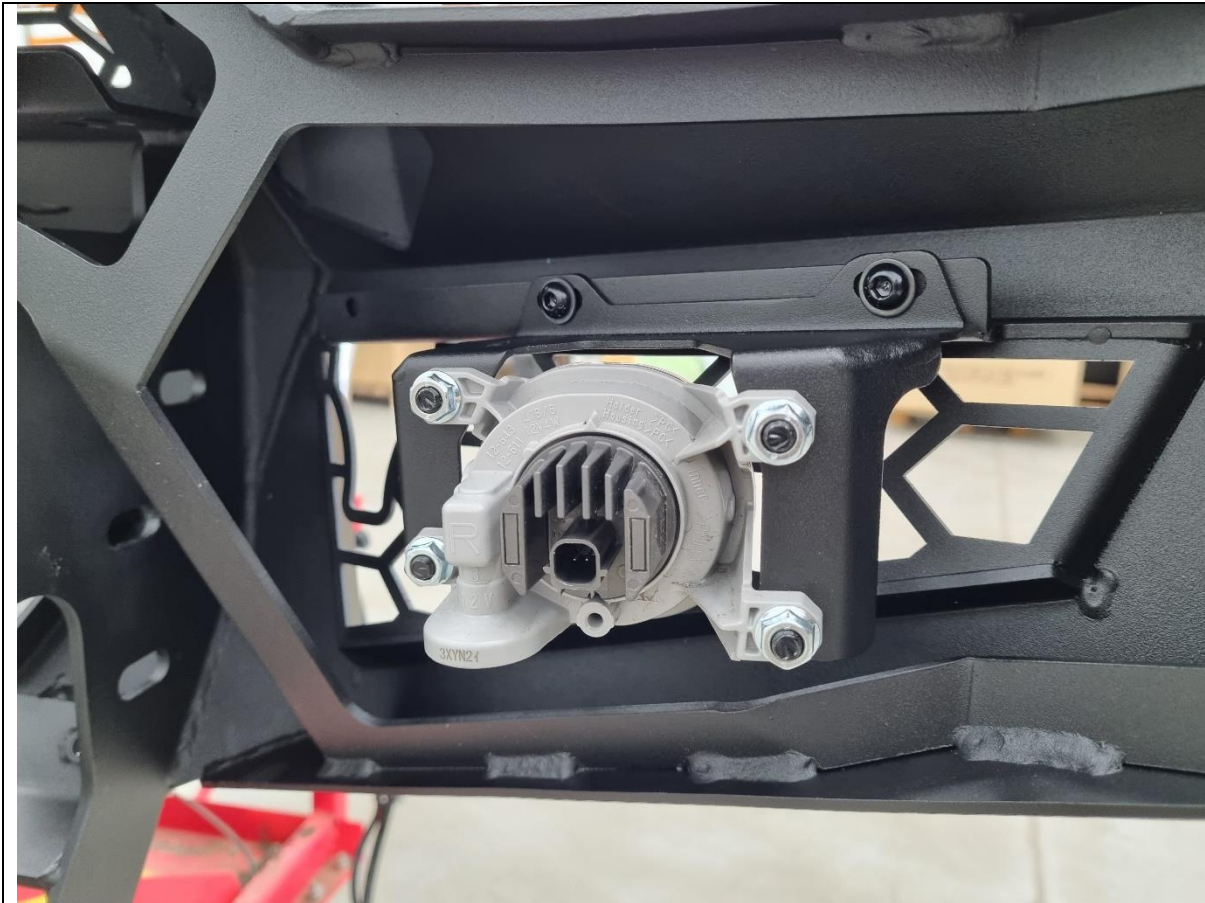
39. Secure with 4x M6x16 black button head bolts, black flat washers and flange nuts, each.

**TOOLS REQUIRED**

4mm hex/Allen key

**FASTENERS**

8x M6x16 black button heads  
8x M6 black flat washers  
8x M6 flange nuts



40. Fit the fog light and bracket to the inside of the bullbar and secure with 2x M6x16 black button head bolts and black flat washers, each.

**Note:** There is an arrow marking on the fog light bracket which should be facing the forward direction of travel when installed correctly.

**TOOLS REQUIRED**

4mm hex/Allen key

**FASTENERS**

2x M6x16 black button heads  
2x M6 black flat washers





41. Route and fit the factory loom through the bullbar. Note that the plug connecting back to the vehicle should be on the RH driver side (or same side it was removed from).

42. Connect fog lights back to the loom.

**TOOLS REQUIRED**

**FASTENERS**



43. If not fitting factory fog lights, there is the option to fit Offroad Animal Halo Fog Lights (part no. ORA-ALO-M-2) with B-1185 mounting brackets (purchased separately), or fit 8" light bars or cube lights using the supplied B-1169 universal wing mesh light brackets (shown).

**TOOLS REQUIRED**

4mm hex/Allen Key

**FASTENERS**

4x M6x16 black button head  
4x M6 black washer  
4x M6 flange nut



44. If fitting an integrated light bar, do so now.

This bar is designed to fit the Offroad Animal 32-inch light bar. If fitting this light bar, assemble the light bar with legs facing inwards, and line it up with the slots in the centre gusset. Secure with M6 fasteners supplied with the light.

This bar can also accommodate most other “30-32inch” size light bars (eg. Stedi ST3K 31.5” with legs facing outwards), as well as 20-22” light bars.

45. Fit 2x pan braces to the back of the bar (see inset) using 8x M6x16 black button head bolts, flat washers and flange nuts.

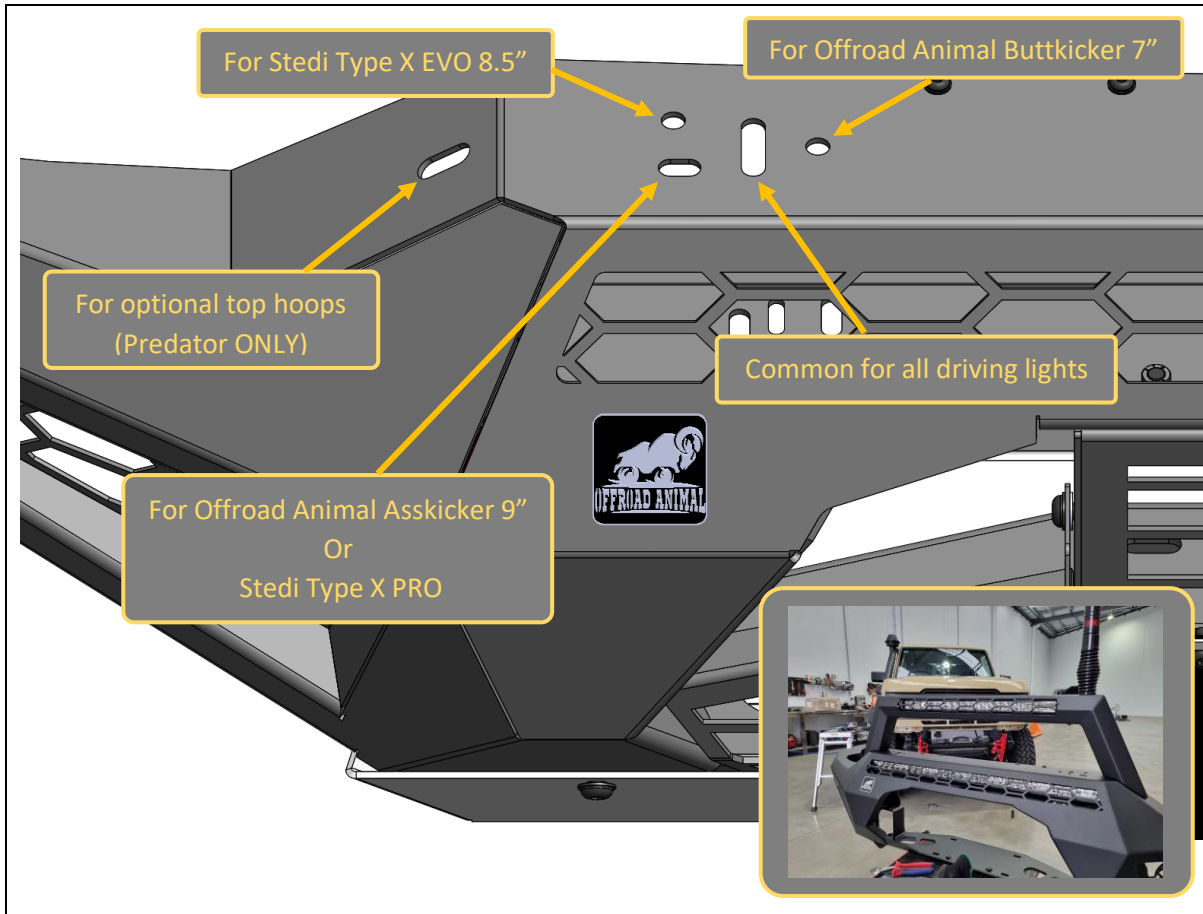
46. Tidy up the wiring harness and other looms with cable ties on the inside of the bar.

**TOOLS REQUIRED**

4mm hex/Allen key  
Supplied with light bar

**FASTENERS**

8x M6x16 black button head  
8x M6 black flat washer  
4x M6 flange nut  
Supplied with light bar



<p>47. If fitting driving lights or top hoop to this bar, this is also the most convenient time to do so. It is still possible later but is more difficult.</p> <p>48. Refer to diagram above for which mounting holes to use.</p>	<p><b>TOOLS REQUIRED</b></p>
<p><b>This is important to not obstruct the view of the Autonomous Emergency Braking (AEB) radar located behind the Toyota badge in the grille.</b></p>	<p><b>FASTENERS</b></p>



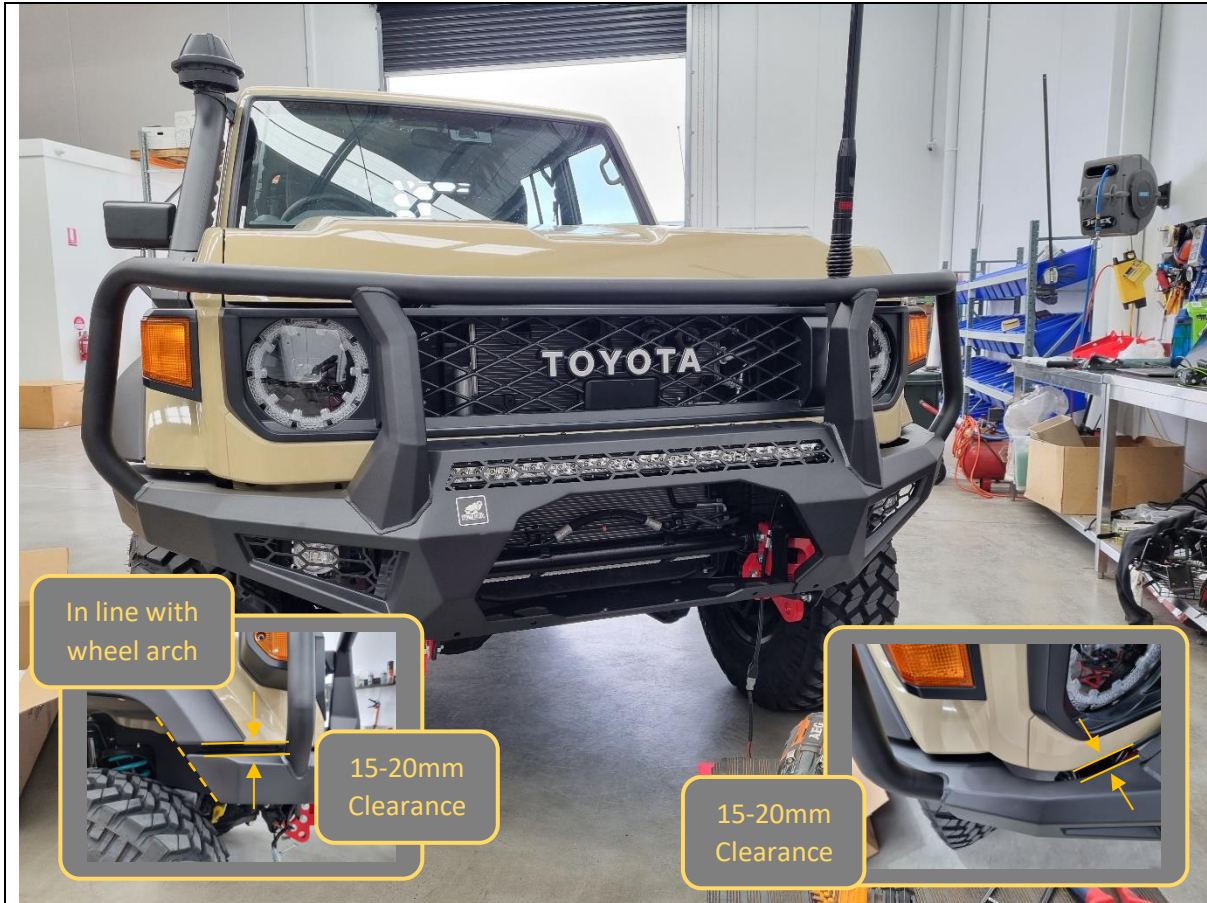
49. With assistance, either from another person, or a lifting trolley, lift the bar onto the mounts on the vehicle.
50. Secure the bar to the mounts with 8x M12x30 Bolts, heavy duty washers and M12 Nyloc + flange nuts. Leave finger tight at this stage.
- Note: Use a washer on both bolt and nut side for the Nyloc nut. 1x washer on the bolt side is all that is required with flange nuts.
51. **Important:** Fully tighten all impact assembly bolts (Steps 22-32) once bullbar is fitted to the vehicle.

**TOOLS REQUIRED**

- Lifting trolley
- 16/17/18/19mm socket/spanner

**FASTENERS**

- 8x M12x30 hex bolt
- 10x M12 heavy duty washer
- 2x M12 Nyloc nut
- 6x M12 flange nut



52. With assistance, from another person, align the bar with the edges of the vehicle. The bar should sit symmetric left/right on the vehicle.

In front/side view, the top face of the wings of the bar should sit parallel with the bottom edge of the flares/quarter panel, with about 15-20mm vertical clearance.

In side view, the end of the bar wing should be in line with the wheel arch liner.

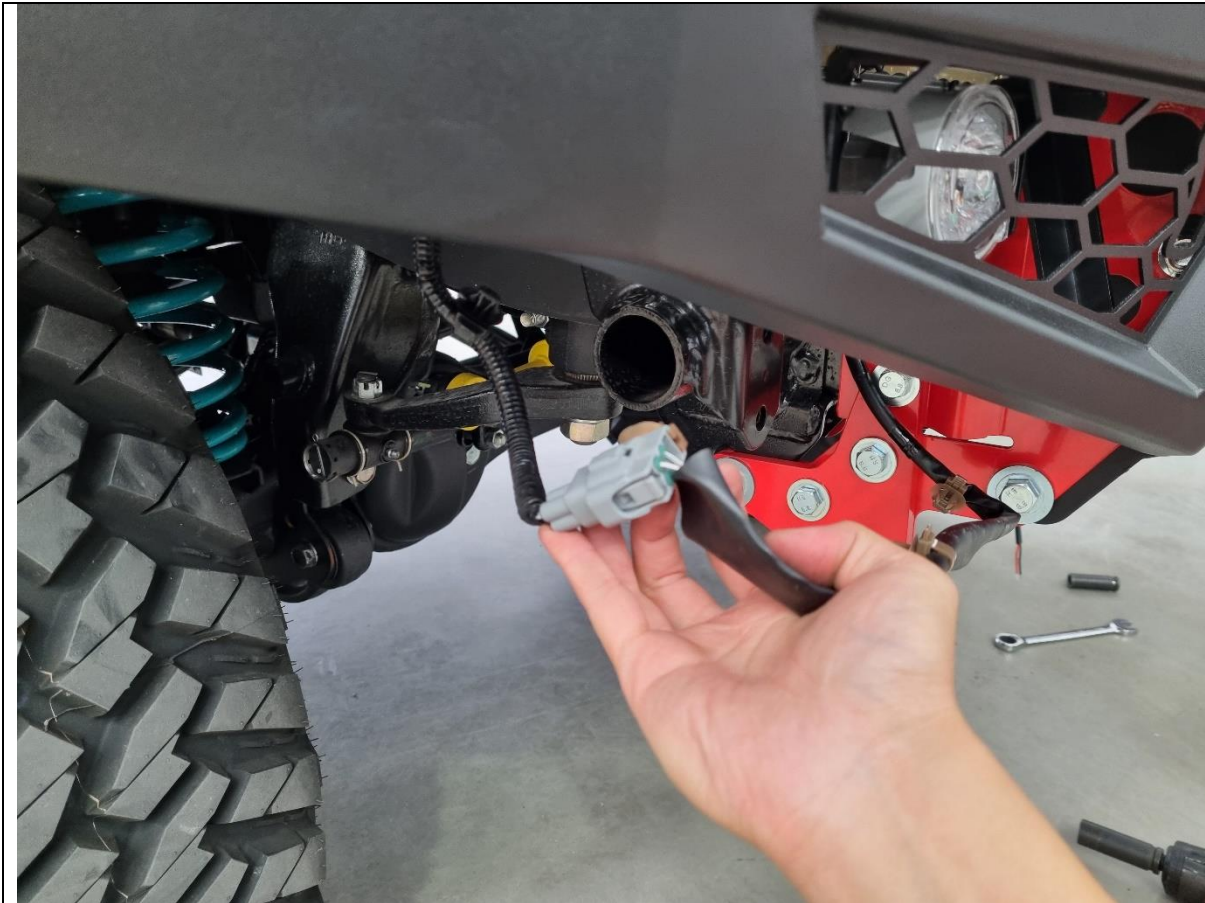
In top view, there should be 15-20mm clearance between the bar and grille.

53. Once happy with alignment, tighten all 8x M12 bolts.

**TOOLS REQUIRED**

18/19mm socket/spanner

**FASTENERS**



54. Reconnect the fog light and bumper loom to the vehicle.

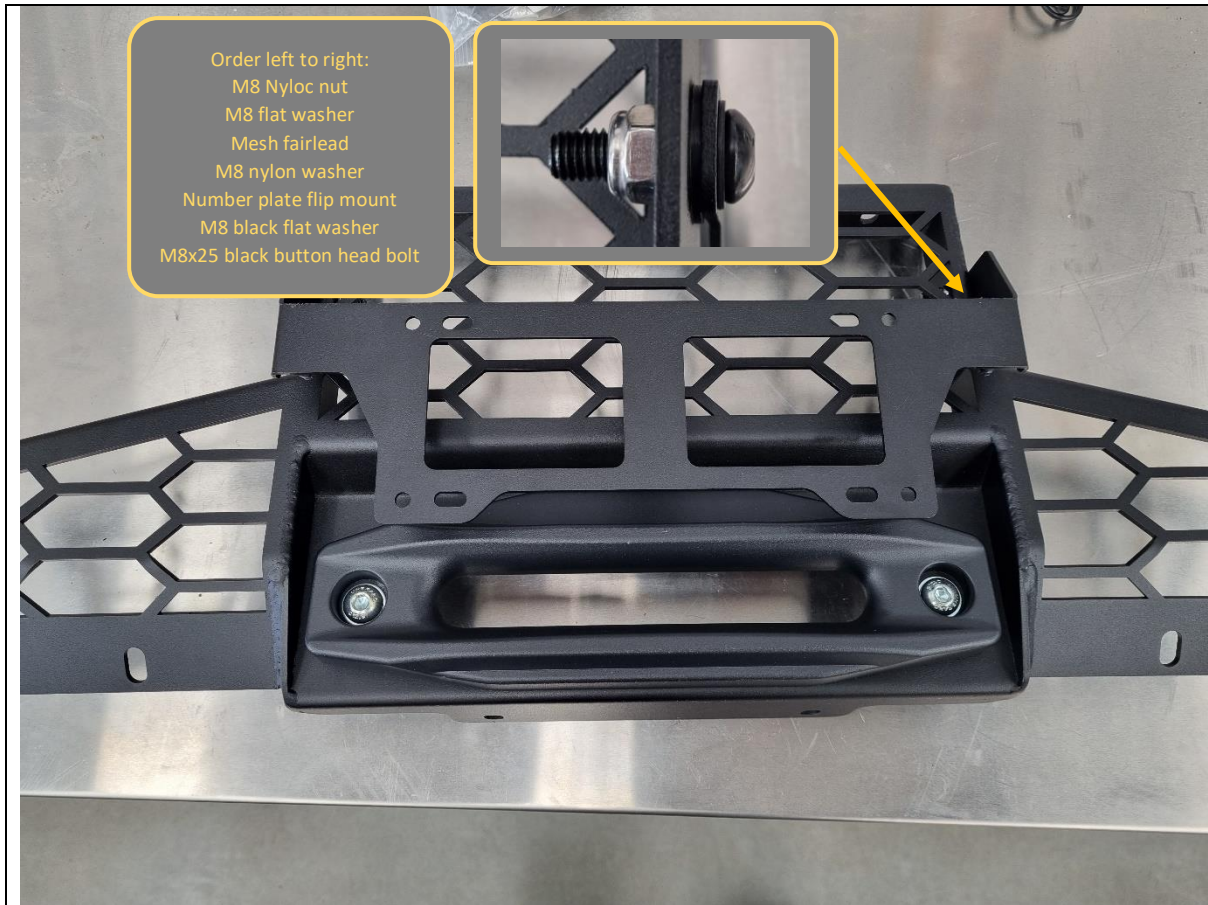
**TOOLS REQUIRED**

**FASTENERS**



<p>55. If fitting a winch, do so now.</p>	<p><b>TOOLS REQUIRED</b></p> <p>Refer to instructions supplied by winch</p>
<p>56. This bar is designed to fit most low mount winches, in foot down configuration. WARN ZEON 12 is the largest winch confirmed to fit.</p> <p>57. Ensure clutch handle will be accessible through opening in front mesh panel. Refer to winch instructions regarding changing clutch handle location.</p>	<p><b>FASTENERS</b></p> <p>Supplied with winch</p>





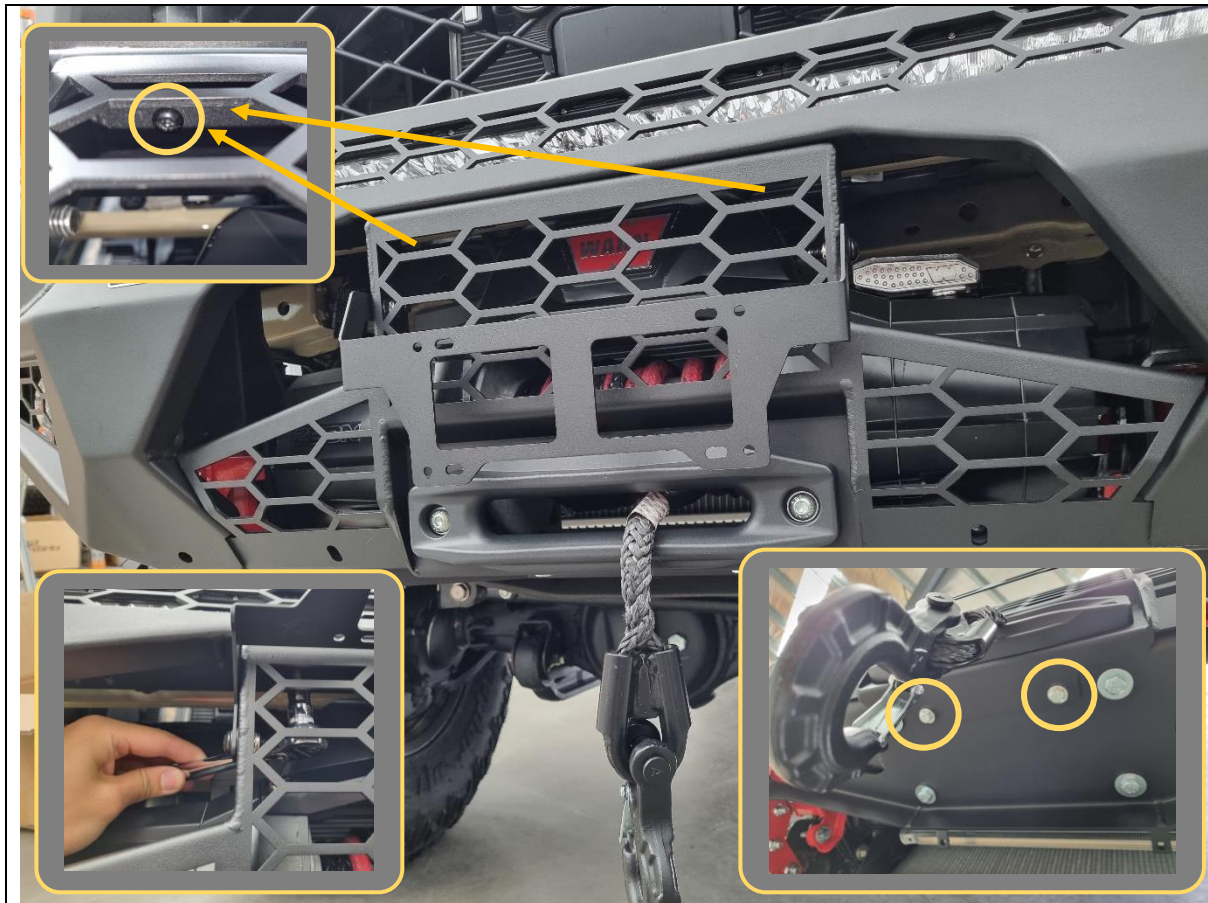
- 58. If required, fit the winch fairlead to the mesh fairlead mount using M10 or 3/8" fasteners supplied with the winch. This bar is only compatible with hawse type fairleads.
- 59. Fit number plate flip mount to mesh panel as shown above. Tighten bolts so that flip mount and can be moved by hand with some friction resistance.

**TOOLS REQUIRED**

5mm hex/Allen key  
13mm socket/spanner

**FASTENERS**

2x M8x25 black button head  
2x M8 black flat washer  
2x M8 nylon washer  
2x M8 flat washer  
2x M8 flange nut



- 60. If applicable, hold the mesh fairlead mount up near the bar and feed the winch rope through the hawse fairlead.
- 61. Fit the mesh fairlead mount to the centre of the bar, using 2x M8x16 black button head bolts (top, reach around from behind to access, see LH bottom photo), 2x M8x20 hex head bolts (bottom) and 4x flat washers.
- 62. Tighten fasteners using 13mm socket/spanner and 5mm hex/Allen key.

**TOOLS REQUIRED**

13mm socket/spanner  
5mm hex/Allen key

**FASTENERS**

2x M8x16 black button head  
2x M8 black flat washer

2x M8x20 hex head  
2x M8 flat washer



- 63. Fit the centre bash plate to the bar using 4x M8x25 black button bolts and flat washers.
- 64. Secure the back of the centre bash plate to the impact assembly using 2x M10x20 button head bolts, flat washers and flange nuts.

**TOOLS REQUIRED**

- 5mm hex/Allen key
- 6mm hex/Allen key

**FASTENERS**

- 4x M8x25 black button head
- 4x M8 black flat washer
- 2x M10x25 button head bolt
- 2x M10 flat washer
- 2x M10 flange nut



- 65. Fit number plate back to the flip mount using 2x M6x16 black button head bolts, black flat washers and flange nuts.
- 66. Affix ADR compliance plate sticker label in a visible spot on the bash plate (see inset photo).

**TOOLS REQUIRED**

4mm hex/Allen key

**FASTENERS**

2x M6x16 black button head  
2x M6 black flat washer  
2x M6 flange nut



- 67. **Toro only.** If required, fit the supplied antenna mounting brackets to the back of the bar, and secure with 2x M8x25 black button head bolts and black washers, each.
  
- 68. **Toro only.** Else fit the 2x M8x25 black button head bolts and black washers to the back of each bullbar upright, to protect nut threads in bar for future use.
  
- 69. Review fitment and double check all bolts are tightened correctly.

**TOOLS REQUIRED**

5mm hex/Allen key

**FASTENERS**

M8x25 black button head  
M8 flat washer



**Congratulations! You're done!**  
**Go do that lap of Australia in your newly protected 70 series!**