

TOYOTA LANDCRUISER 300 SERIES MY2022-ON ROCK SLIDERS

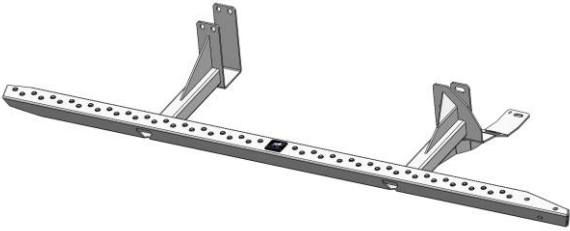
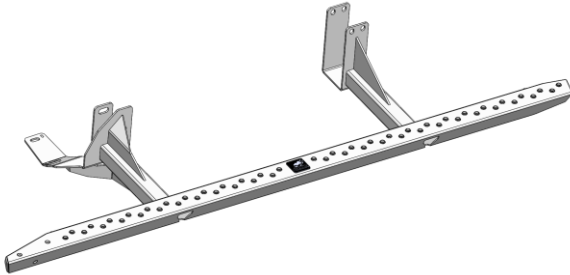
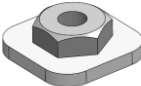
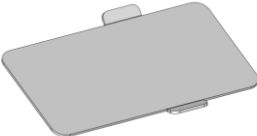

IMPORTANT! – READ BEFORE INSTALLATION

- When installed in accordance with these instructions, the Rock Sliders do not affect the operation of the vehicles SRS airbags.
- This product must be installed exactly as per these instructions using only hardware supplied.
- Take a few moments to read instructions thoroughly before beginning work.
- In the event of damage to any bar component please contact OFFROAD ANIMAL to arrange repair/replacement of components.
- Do not use this product for any vehicle make or model other than that specified on these instructions.
- Do not remove labels from this product.
- This product and its fixings must not be modified in any way unless stated in these fitting instructions.
- The installation of this product is recommended for trained personnel.
- These instructions are correct at time of publication. OFFROAD ANIMAL cannot be held responsible for the impact of any changes subsequently made by the vehicle manufacturer. If you find something has changed please contact us to let us know!
- During installation it is the duty of the installer to check correct operation/clearances of all components.
- If Instructions are to be printed for reference in the workshop, it is recommended that they are printed in colour, for best legibility.
- Fitting time estimated 1-2 hours

PARTS LISTING

IMPORTANT: Check all parts are present before beginning work! Contact OFFROAD ANIMAL if something is missing.

Main Parts – In the Box

Qty	Part Number	Description	Image
1	RSW-TLC-300-22-ASM1R	LC300 Rock Slider Mk.II Welded Assy RH	
1	RSW-TLC-300-22-ASM1L	LC300 Rock Slider Mk.II Welded Assy LH	
2	RS-TLC-300-22-ASM5	LC300 Slider Crossmember Nut Plate Assembly	
2	B-0694	Toyota LC300 - Mount Shim 2mm	
2	T-0046	LC300 Slider Front Mount Crush Tube	

Small Parts – Contained in Small Parts Kit Bag

Qty	Part Number	Description
2	NP-COM-M10-190-ASM0	M10 LOLLYPOP NUT PLATE 190MM LONG
2	M10 X 40	Bolt Hex, M10X40X1.5, GR8.8 ZP
2	M10 Flat Washer	M10 FW
6	M10X25 BHCS BLACK ZINC	SCREW, BUTTON HEAD CAP, M10X25X1.5 GR12.9, ISO4042 ZnNi BLACK PASSIVATED FINISH
6	M10 FW LHD BLACK ZINC	WASHER, FLAT M10X28.5X2.5, ISO4042 ZnNi BLACK PASSIVATED FINISH
2	M12X30	Bolt Hex, M12X30x1.75, GR8.8 ZP
6	M12X120	Bolt Hex, M12X120x1.75, GR8.8 ZP
8	M12 FLAT WASHER	M12 FW
6	M12 FLANGE NUT	Flange Nut, M12x1.75 G8.8 ZP

TOOLS REQUIRED

The following tools will be required to install the product.

Hand Tools	Power Tools	Workshop Equipment
Metric Socket Set 8-19mm Socket Extension Bar Metric Spanner Set 10-19mm Hex (Allen) Key Set 4-6mm Flat Blade Screwdriver set Phillips Head Screwdriver set Utility Knife Side Cutters Pliers	Electric/Air Impact Driver (Optional)	Lift Trolley

WORKSHOP SAFETY

It is the responsibility of the installer to always complete works in a safe manner. Make sure the following safety equipment is available and precautions are observed whilst fitting this product.

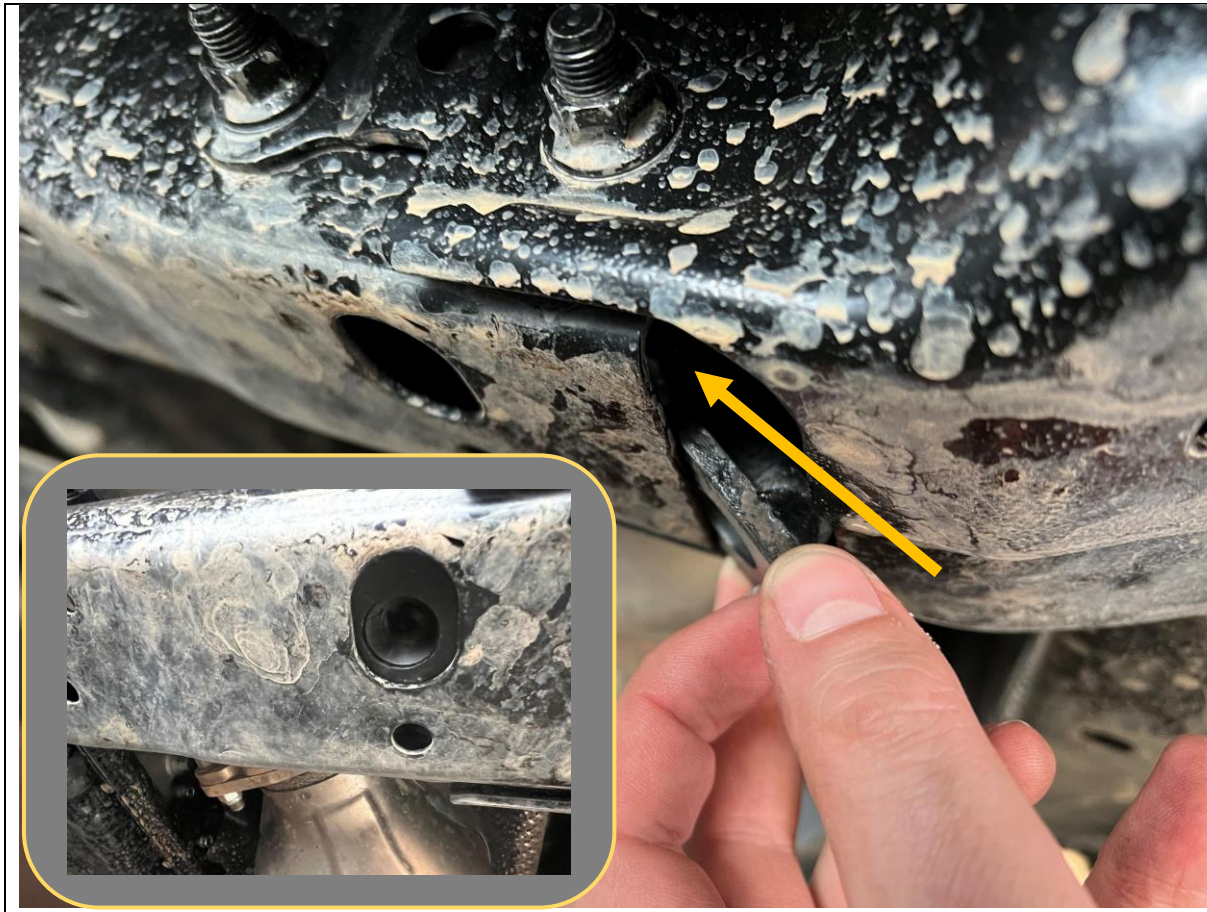
<p>Hearing Protection</p> 	<p>Always wear ear protection when using power tools.</p>
<p>Eye Protection</p> 	<p>Ensure eye protection is always worn when cutting or drilling.</p>
<p>Manual Handling</p> 	<p>Do not attempt to lift bar assemblies or rock sliders on your own.</p> <p>Always use two people to lift or use mechanical Lifting aid such as hydraulic lifting trolley.</p>
<p>Vehicle Support</p> 	<p>Always ensure vehicle is properly supported when working on it. Do not attempt to fit products whilst suspension work is being carried out. Do not work under a vehicle supported only by a jack.</p>



1. Remove Factory side steps if fitted by removing the 6x Bolts (2 Per mount) securing them to the body using a 12mm socket.
2. Discard Factory steps and bolts.

TOOLS REQUIRED
12mm socket

FASTENERS
6x Factory Flange head Bolts
(per side)

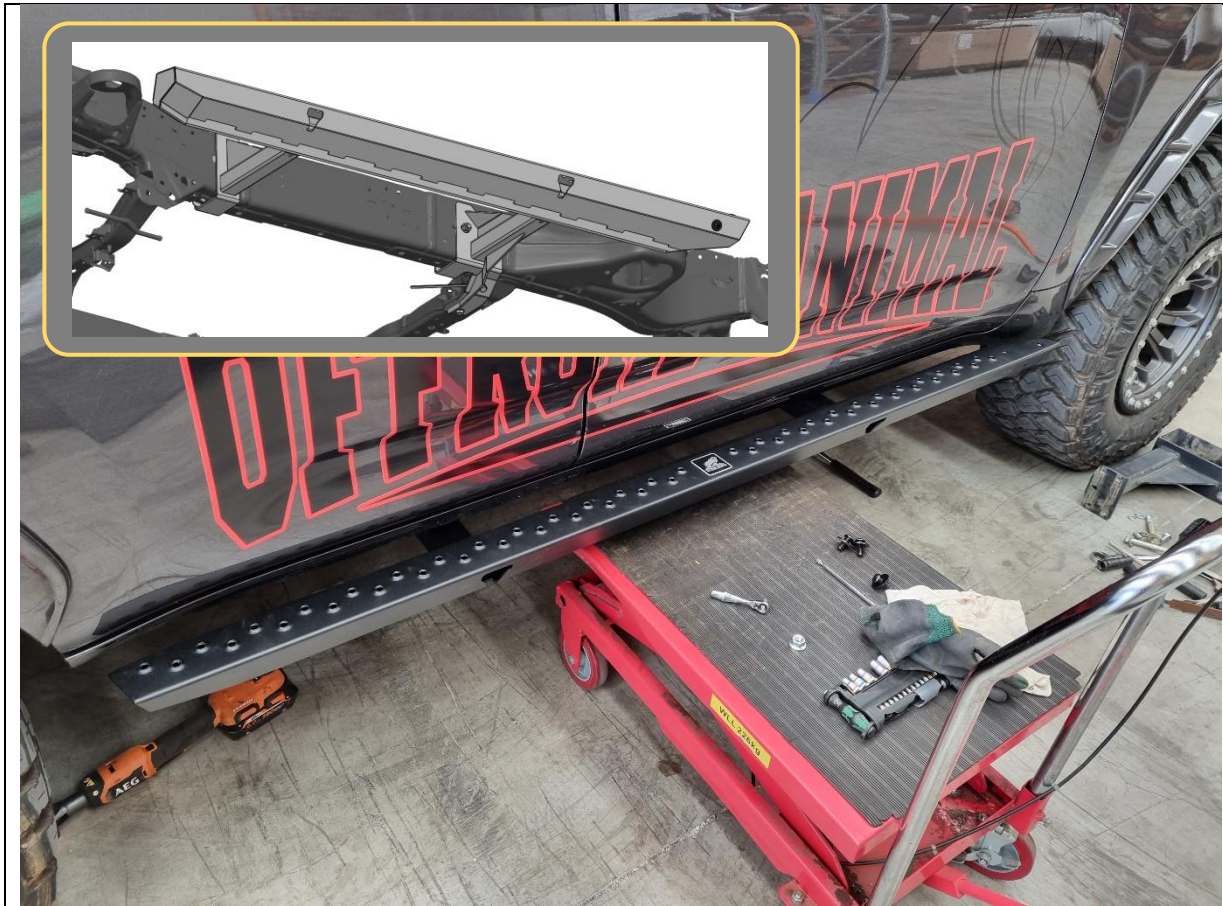


3. Run M12 bolt through both large M12 nut plates to ensure the thread runs freely. Clear with M12x1.75P metric tap if thread is contaminated.
4. Place large M12 nut plate in position inside the crossmember, adjacent to the front mount location. The nut plate thread should sit within the large oval cutout in the bottom of the crossmember as shown.
5. The nut plate will sit in position by gravity. Take care not to over insert the plate into the crossmember as it can be tricky to fish back out.

TOOLS REQUIRED

FASTENERS

M12 Large Nut Plate



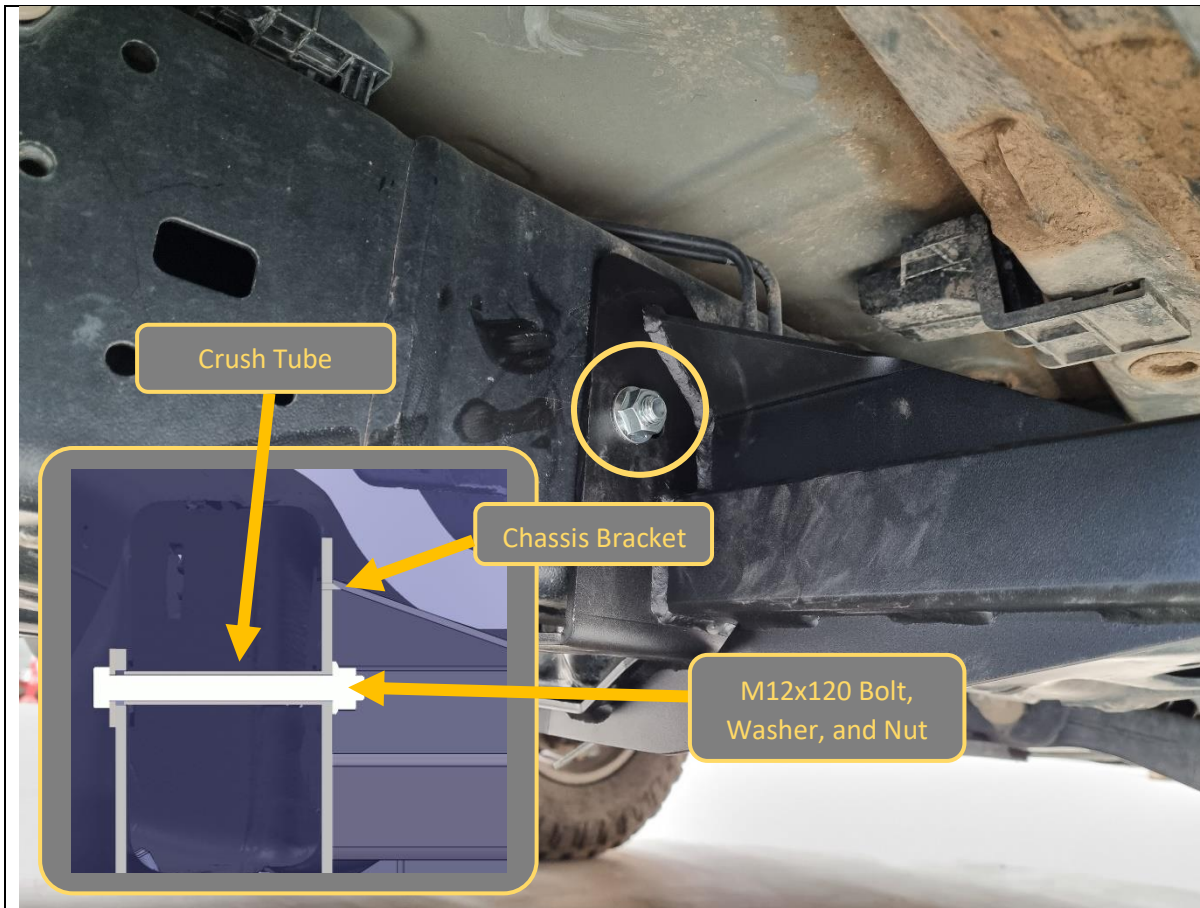
6. Using either another person or a lifting trolley, present the rock slider up against the vehicle. The U-shape brackets will wrap around the chassis rail.

Note: To distinguish between LH and RH sliders, there will be 3x welded nuts on the front tip of the slider step.

TOOLS REQUIRED

Lifting trolley (optional)

FASTENERS



7. Loosely secure the front mount to the chassis using 1x M12x120 hex bolt, crush tube, large flat washer and M12 flange nut, fitted through the thru hole in the chassis rail, just behind the transmission crossmember.
8. Insert bolt, washer and crush tube from the inside of the vehicle and secure with nut on the outside.

TOOLS REQUIRED

FASTENERS

- 1x M12x120 Bolt
- 1x M12 Flat Washer
- 1x Crush Tube
- 1x M12 Flange Nut



9. Loosely secure the bottom of the front mount into the nut plate in the crossmember placed earlier using 1x M12x30 hex bolt and flat washer.
10. Take care to begin the thread without dislodging the nut plate, which is only sitting under gravity in the crossmember. Once thread is started, the side of crossmember will prevent the nut plate from rotating.

TOOLS REQUIRED

FASTENERS

- 1x M12x30 Bolt
- 1x M12 Flat Washer



11. Pre-bend the M10 lollipop nut plate to approximate shape to reach final bolt position.
12. Insert lollipop nut plate through gap between chassis and crossmember.
13. Hold in position and secure with 1x M10x40 bolt and Flat washer.
14. Leave all bolts finger tight at this stage.

TOOLS REQUIRED

Patience (sorry!)

FASTENERS

1x M10x40 Bolt
1x M10 flat washer
1x M10 lollipop Nut Plate



15. Secure the rear mount to the chassis with 2x M12x120 hex bolts, flat washers and flange nuts positioned through the holes in the U-bracket over the top of the chassis rail.
16. It is possible to reach over the chassis rail to position the M12 nuts.
17. Leave bolts finger tight at this stage.
18. Fit Shim plate if required to ensure snug fit with chassis rail.
19. On RHS of vehicle ensure mount bolts go below the wiring harness that sits on top of the chassis rail.

TOOLS REQUIRED

FASTENERS

- 2x M12x120 Bolts
- 2x M12 Flat washers
- 2x M12 Flange nuts



- 20. Adjust fore / aft position of sliders on mounts to achieve even appearance as required.
- 21. Take care to ensure adequate clearance where the body panel curves toward wheel at the front end.
- 22. If fitting optional Offroad Animal Scrub Rails (Part No. SR-TLC-300-22-ASM0), do so now before fully locking in the position of the sliders.
- 23. Once happy with alignment, tighten all bolts.

TOOLS REQUIRED

16/17/18/19mm
socket/spanner

FASTENERS



- 24. Fit the Offroad Animal logo plate to the small gap between pierced features on tread plate, using the pre applied double sided adhesive.
- 25. Complete the entire slider install again for the other side of the car.
- 26. After that you are done!

TOOLS REQUIRED

FASTENERS



Congratulations!
Head for the tracks and enjoy your newly protected Landcruiser!