



## TOYOTA LANDCRUISER LC200

2015 ON

ROCK SLIDERS

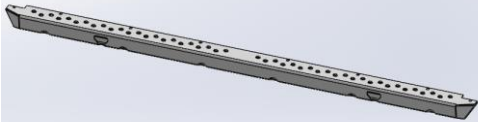
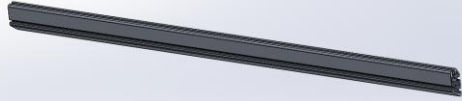
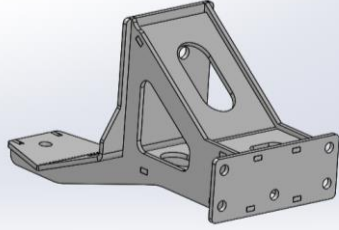
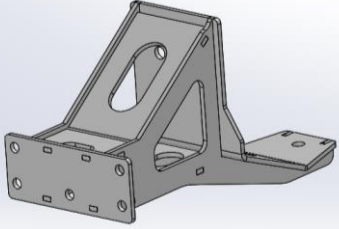
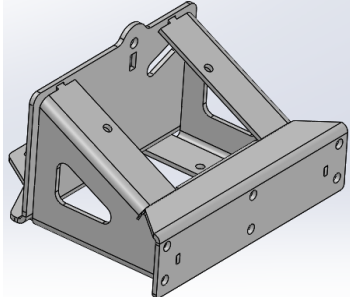
### **IMPORTANT! – READ BEFORE INSTALLATION**

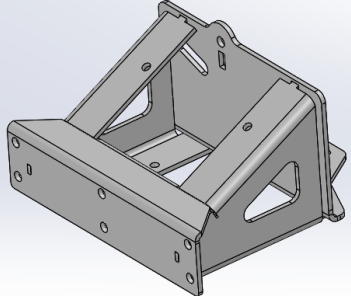
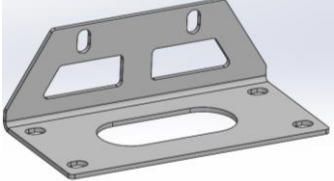
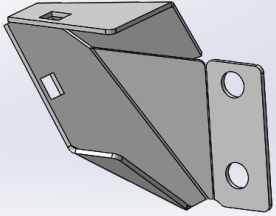
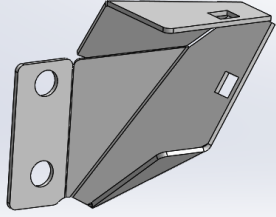
- When installed in accordance with these instructions, the front protection bar does not affect the operation of the vehicles SRS airbags.
- This product must be installed exactly as per these instructions using only hardware supplied.
- Take a few moments to read instructions thoroughly before beginning work.
- In the event of damage to any bar component please contact OFFROAD ANIMAL to arrange repair/replacement of components.
- Do not use this product for any vehicle make or model other than that specified on these instructions.
- Do not remove labels from this product.
- This product and its fixings must not be modified in any way unless stated in these fitting instructions.
- The installation of this product is recommended for trained personnel.
- These instructions are correct at time of publication. OFFROAD ANIMAL cannot be held responsible for the impact of any changes subsequently made by the vehicle manufacturer. If you find something has changed please contact us to let us know!
- During installation it is the duty of the installer to check correct operation/clearances of all components.
- If Instructions are to be printed for reference in the workshop, it is recommended that they are printed in colour, for best legibility.
- Fitting time estimated 1-2 hours

# PARTS LISTING

**IMPORTANT:** Check all parts are present before beginning work! Contact OFFROAD ANIMAL if something is missing.

## Main Parts

| Qty      | Part Number         | Description                    | Image  |
|----------|---------------------|--------------------------------|--|
| <b>2</b> | B-0224              | Slider Step 200 Series         |    |
| <b>2</b> | E-0002-1500         | Slider extrusion -1500MM       |   |
| <b>1</b> | RS-TLC-200-15-ASM2L | LC 200 Slider Front Mount      |  |
| <b>1</b> | RS-TLC-200-15-ASM2R | LC 200 Slider Front Mount      |  |
| <b>1</b> | RS-TLC-200-15-ASM3L | LC200 Slider - Rear Mount Assy |  |

|                 |                            |  |   |
|-----------------|----------------------------|--|---|
| <p><b>1</b></p> | <p>RS-TLC-200-15-ASM3R</p> | <p>LC200 Slider - Rear Mount Assy</p>        |   |
| <p><b>2</b></p> | <p>B-0304</p>              | <p>LC200 Slider Rear Mount Brace Bracket</p> |   |
| <p><b>2</b></p> | <p>B-0306L</p>             | <p>Slider End Cap - Stub Nose</p>            |   |
| <p><b>2</b></p> | <p>B-0306R</p>             | <p>Slider End Cap - Stub Nose</p>            |  |

**Mounting Kit Small Parts – Contained in Small Parts Kit Bag**

| Qty | Part Number                   | Description  |
|-----|-------------------------------|--|
| 4   | P-0100                        | 200 Series, Tapped Backing Plate                   |
| 2   | NP-COM-M12-300-ASM0           | M12 NUT PLATE 300MM STEM                           |
| 2   | M12 FW LHD                    | M12 FW Large Heavy Duty                            |
| 2   | M12X30                        | Bolt Hex, M12X30x1.75, GR8.8 ZP                    |
| 4   | M10 x 30                      | Bolt Hex, M10X30x[1.5], GR8.8 ZP                   |
| 4   | M10 Flat Washer               | M10 FW   |
| 12  | M6x20 BHCS BLACK ZINC         | SCREW, BUTTON HEAD CAP,<br>M6X20X1 GR12.9 BLACK ZP |
| 8   | M6 FLAT WASHER                | M6 FW  |
| 30  | M10 x 25                      | Bolt Hex, M10X25x[1.5], GR8.8 ZP                   |
| 30  | M10 FLANGE NUT                | Flange Nut, M10x1.5 G8.8 ZP                        |
| 2   | M12X40                        | Bolt Hex, M12X40X1.75, GR8.8 ZP                    |
| 2   | M12 FLAT WASHER               | M12 FW   |
| 24  | M8 FLAT WASHER-<br>BLACK ZINC | M8 FW- BLACK ZINC                                  |
| 24  | M8 NUT                        | Hex Nut, M8x1.25 G8.8 ZP                           |
| 12  | M8X20 CAP SCREW               | CAP SCREW, M8X20X1.25 GR10.9 ZP                    |
| 12  | M8 X 20 BHCS BLACK<br>ZINC    | SCREW, BUTTON HEAD CAP,<br>M8X20X1.25 BLACK ZP     |
| 2   | OFA-LOGO                      | OFFROAD ANIMAL METAL LOGO                          |
| 2   | P-0114                        | 200 Series Slider - Rear Tapped Mount<br>Plate     |
| 16  | M8 FLAT WASHER                | M8 FW  |
| 4   | M8 Nutsert                    | M8 Nutsert   |
| 4   | M8 X 25 HEX                   | Bolt Hex, M8X25x1.25, GR8.8 ZP                     |
| 12  | M8 FLANGE NUT                 | Flange Nut, M8x1.25 G8.8 ZP                        |
| 12  | M8 X 20 HEX                   | Bolt Hex, M8X20x1.25, GR8.8 ZP                     |
| 8   | M6CN3MM                       | CAGE NUT M6x2.6-3.5                                |
| 8   | M6 FLAT WASHER BLACK<br>ZINC  | M6 FW BLACK ZP                                     |
| 8   | M6x16 BHCS BLACK ZINC         | SCREW, BUTTON HEAD CAP,<br>M6X16X1 GR12.9 BLACK ZP |

## TOOLS REQUIRED

The following tools will be required to install the product.

| <b>Hand Tools</b>   | <b>Power Tools</b>                    | <b>Workshop Equipment</b>                                  |
|---|---------------------------------------|--|
| Metric Socket Set 8-19mm<br>Socket Extension Bar<br>Metric Spanner Set 10-19mm<br>Torx Drivers T25-T30<br>Hex (Allen) Key Set 4-6mm<br>Trim Puller Tool<br>Flat Blade Screwdriver set<br>Phillips Head Screwdriver set<br>Utility Knife<br>Side Cutters<br>Pliers | Electric/Air Impact Driver (Optional) | Hydraulic Floor Jack<br>Cable Ties<br>Nutsert Setting Tool |

# WORKSHOP SAFETY

It is the responsibility of the installer to always complete works in a safe manner. Make sure the following safety equipment is available and precautions are observed whilst fitting this product.

|   |  |
|---|--|
| <p>Hearing Protection</p>  | <p>Always wear ear protection when using power tools.</p>  |
| <p>Eye Protection</p>     | <p>Ensure eye protection is always worn when cutting or drilling.</p>  |
| <p>Manual Handling</p>   | <p>Do not attempt to lift bar assemblies or rock sliders on your own.</p> <p>Always use two people to lift or use mechanical Lifting aid such as hydraulic lifting trolley.</p>                          |
| <p>Vehicle Support</p>   | <p>Always ensure vehicle is properly supported when working on it. Do not attempt to fit products whilst suspension work is being carried out. Do not work under a vehicle supported only by a jack.</p> |



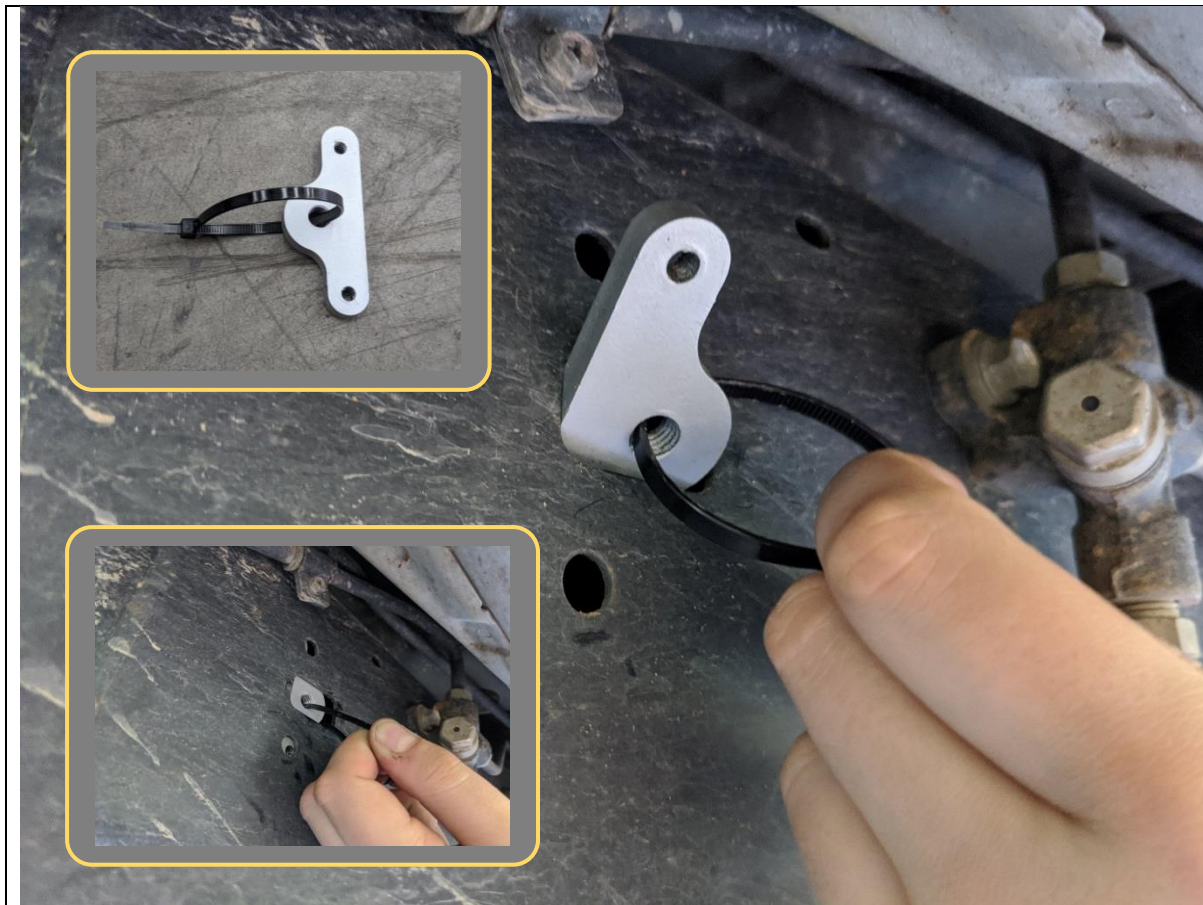
1. Remove the Factory side steps by removing the 12mm head bolts securing it to the body.
2. Discard Factory Steps

**TOOLS REQUIRED**  
**12mm Socket**

**FASTENERS**

|   |                              |
|---|------------------------------|
| <p>3. There are two types of chassis nut plates used on this product. Identify the locations on chassis for installation of these nut plates.</p> <p>4. There are 2x of P-0100, Offset type nut plates and 1x P-0114 Inline type nut plate, per side of vehicle</p> | <p><b>TOOLS REQUIRED</b></p> |
|   | <p><b>FASTENERS</b></p>      |





5. Insert cable tie in a loop through center of offset type nut plate, as shown.
6. Insert nut plate through rectangular hole in chassis whilst holding the cable tie in your hand.
7. Using cable tie pull nut plate against chassis. Manipulate position of nut plate to align M6 threads with holes in the chassis, A screwdriver or small punch can greatly assist this process.

**TOOLS REQUIRED**

Cable Tie  
Small screwdriver or punch

**FASTENERS**



8. Fit M6 button head bolts and flat washers to the M6 threads on the nut plate.
9. Tighten with 4mm Hex Key
10. Cut and discard cable tie once secured.
11. Repeat process for second location of Offset type nut plate on chassis.

**TOOLS REQUIRED**

4mm Hex Key  
Side Cutters

**FASTENERS**

2x M6x20mm Button Head Bolts  
2x M6 Flat Washer



12. Remove bolts securing the hand brake cable around the rectangular hole in chassis, as shown.
13. Insert cable tie in a loop through center of Inline type nut plate, as shown.

**TOOLS REQUIRED**  
12mm socket  
Cable ties

**FASTENERS**



14. Fit one M6 Button head screw and to the rear nut plate (inline type).
15. Holding the cable tie, insert the nut plate through the hole in the chassis.
16. Position the screw in the corner of the square hole, and snug down the bolt head using 4mm hex key.
17. Rotate nut plate using cable tie to align the other M6 thread with the opposite corner and fit M6x20 Button head screw.
18. Tighten both screws with 4mm Hex key.
19. Cut and discard cable tie once secured.

**TOOLS REQUIRED**

**4mm Hex Key  
Side cutters**

**FASTENERS**

**2x M6x20 Button head bolt**



20. Bend the nut plate stem to approximate shape shown and insert backwards, through the bottom square shaped hole chassis cross member.
21. Point the stem through the large circular hole as shown and draw the nut plate up into the cavity. Manipulate the position until the thread can be seen through the square hole.
22. This process may require the removal of the nut plate and re-bending of the nut plate stem.

**TOOLS REQUIRED**

**FASTENERS**  
M12 Long Stem Nut Plate



- 23. Fit the front mount to the car, Using M10x30 bolt and flat washers into the nut plate.
- 24. First fit bracket to fixed nut plate on side of chassis, ensuring that the heads of the M6 bolts securing the nut plate fit into the recesses.
- 25. Once secured then fit bottom M12x40 bolt. Position of the nut plate can be manipulated with the stem to aid pickup of the thread.

**TOOLS REQUIRED**

- FASTENERS**
- 1x M10x30 Bolt
  - 1xM10 Flat Washer
  - 1xM12x40 Bolt
  - 1xM12 Flat Washer



26. Fit M8 Nutserts to the two holes in underside of chassis in between the two rear nut plate locations.

It may be necessary to open the holes to the correct 12mm diameter using electric drill and 12mm drill bit

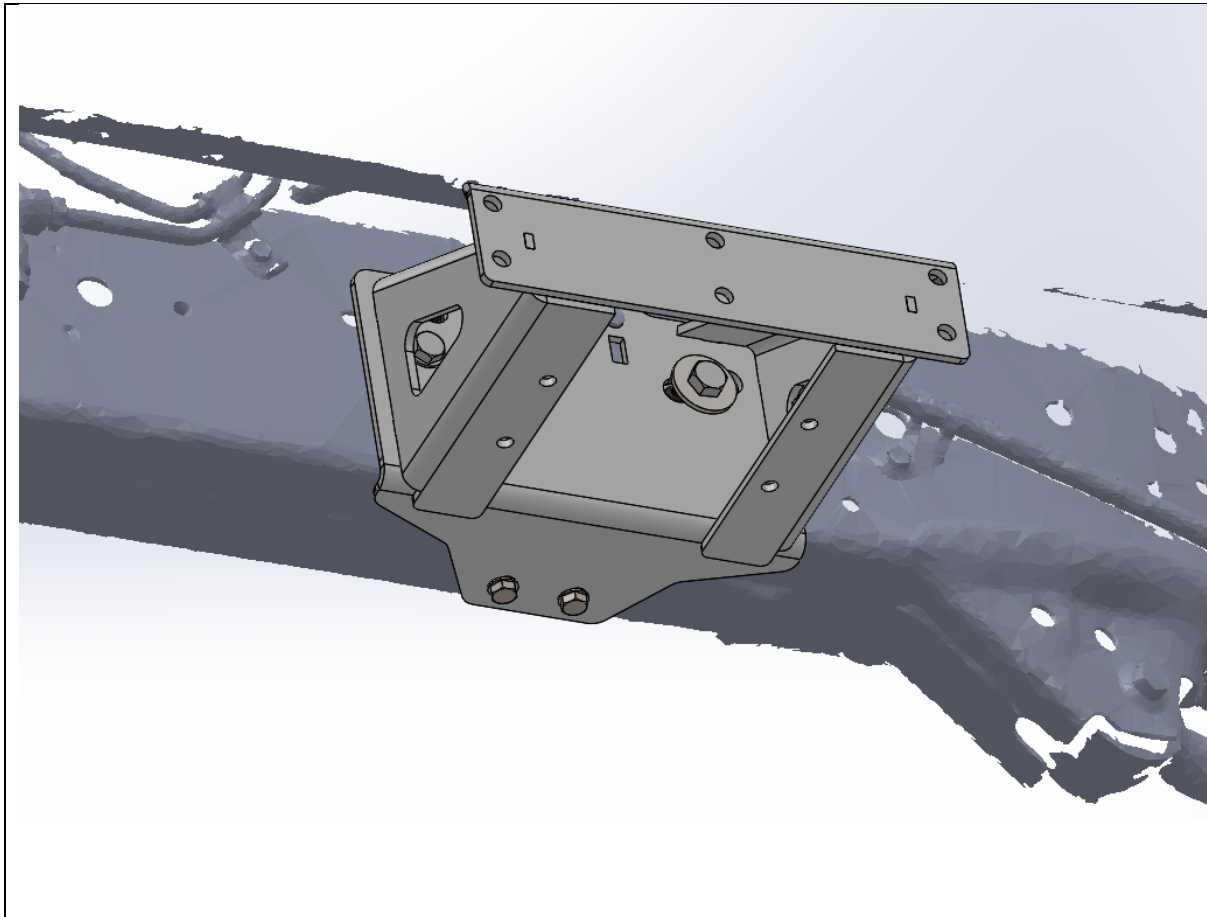
27. Note on fuel tank side the fuel tank cover will need to be removed for best access.

**TOOLS REQUIRED**

Nutsert Setting Tool  
12mm Drill Bit  
Electric Drill

**FASTENERS**

2x M8 Nutsert – Per side.

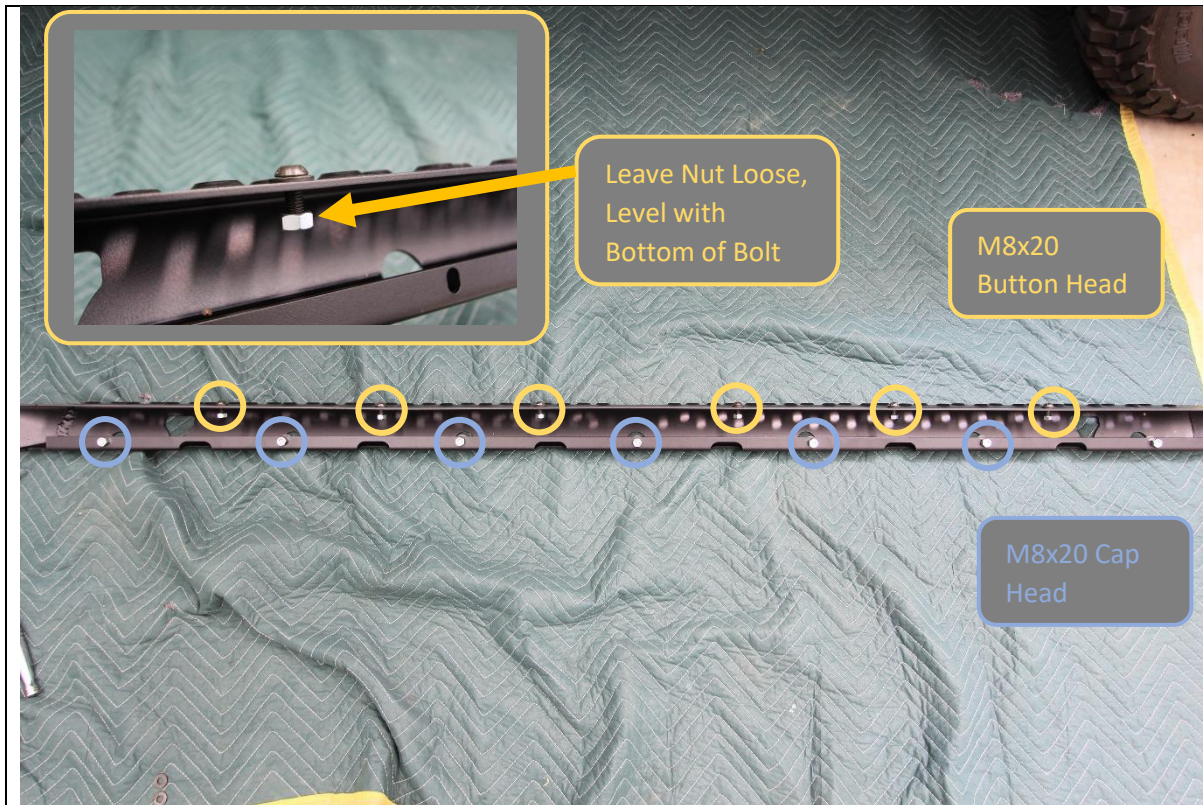


- 28. Fit the Rear mount to the chassis points installed earlier.
- 29. First fit the M10x30 Bolt and M10 Flat washer to the forward nut plate.
- 30. Next Secure the M8x25 Bolts and flat washers to the Nutserts set in bottom of chassis.
- 31. Finally fit the M12x30 bolt and large M12 washer to the rear nut plate.
- 32. Leave all fasteners finger tight at this stage.

**TOOLS REQUIRED**

- FASTENERS**
- M12x30 Bolt
  - M12 Large Flat Washer
  
  - M10x30 Bolt
  - M10 Flat Washer
  
  - 2xM8x25 Bolt
  - 2xM8 Flat Washer





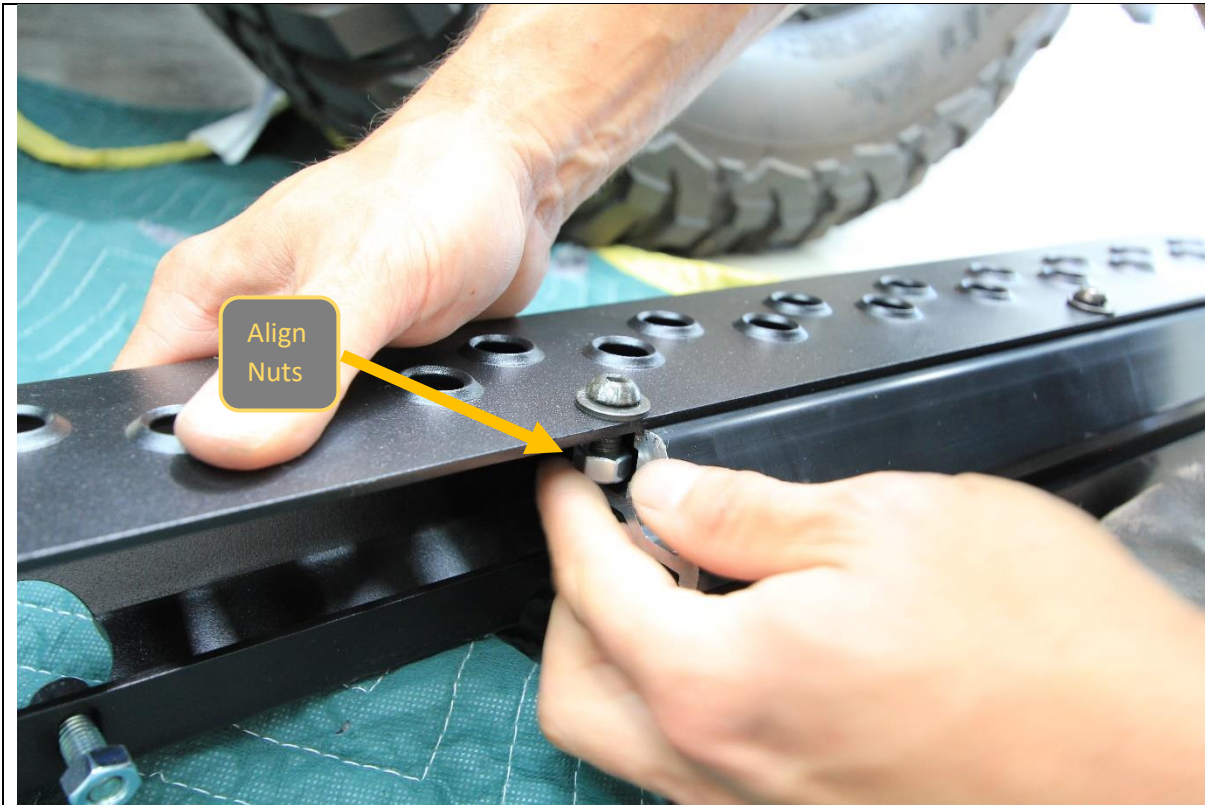
33. Prepare step plate by loosely pre fitting the fasteners to the step.
34. Use M8x20 black button head screws, black M8 washers and M8 Nuts on 6x locations on top of step as shown
35. Use M8x20 cap head screws M8 washers and M8 nuts on 6x locations on bottom side of step.

**NOTE THERE ARE 2 WAYS TO FIT THE STEP ON THE EXTRUSION, IF YOU FIND THIS WAY DIFFICULT SKIP STEP 33-37 AND GO TO STEP 38-43**

**TOOLS REQUIRED**

**FASTENERS**

- 6x M8x20 Black Button Head
- 6xM8x20 Cap Head
- 12x M8 Black Washer
- 12x M8 Nut



36. Slide the step plate onto the main slider structural extrusion. Align the nuts as they enter the T Slots on the extrusion.
37. Center the Step on the extrusion, by measuring distance from extrusion to tip of step, and adjusting until both sides are equal.

**TOOLS REQUIRED**

**FASTENERS**



- 38. Lie extrusion down and place step on top
- 39. Feed nut into slot with something long and skinny (like a dowel or piece of all thread) Do centre ones first the move outwards.

**TOOLS REQUIRED**  
**Long Dowel or skinny stick**

**FASTENERS**



40. Thread cap screws into each hole

**TOOLS REQUIRED**

**6mm Allen Key**

**FASTENERS**

M8 x 20 Cap screws (6)

M8 hex nuts (6)

M8 flat washers (6)



- 41. Flip entire slider up as shown
- 42. Clamp step hard to extrusion

**TOOLS REQUIRED**

**Clamps**

**FASTENERS**



43. Using long tool feed nuts in to centre first and thread in with black M8 button head cap screws and washers

**TOOLS REQUIRED**

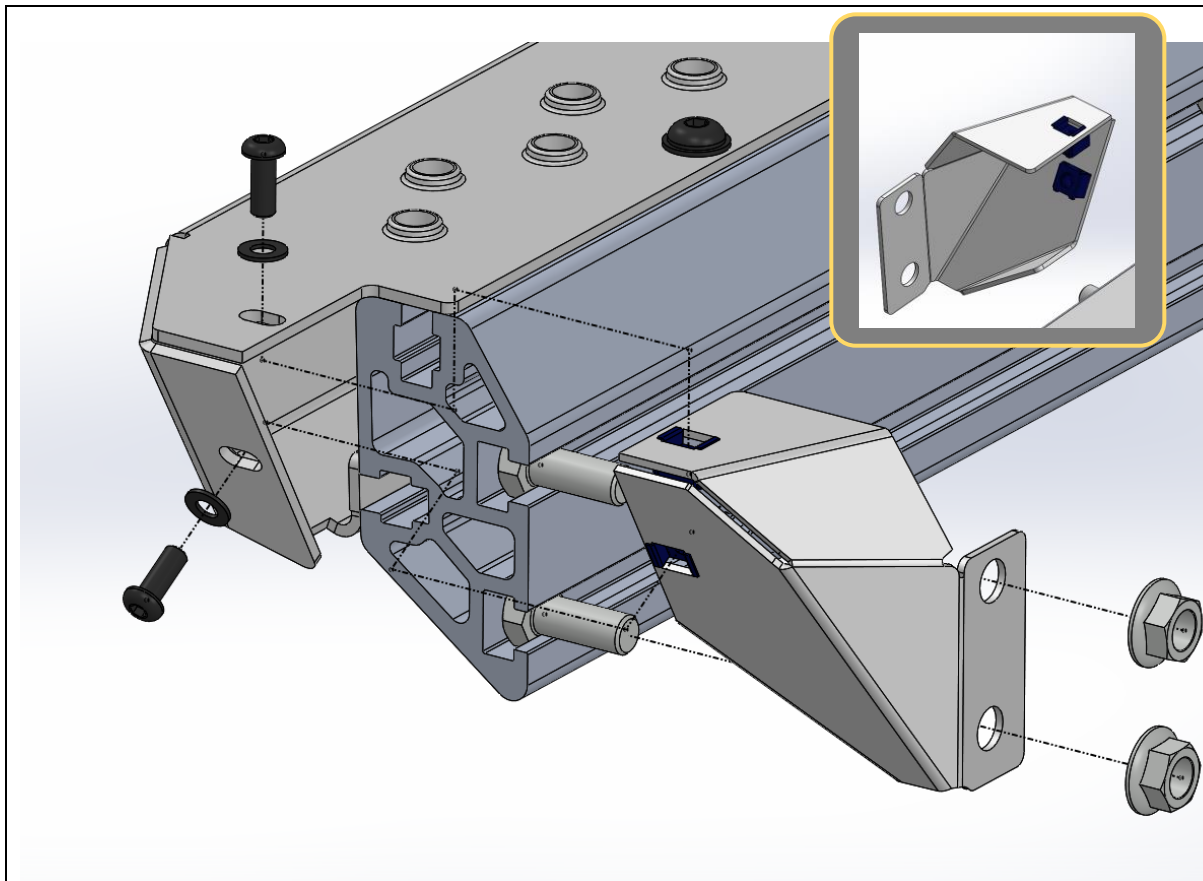
**5mm Allen Key**

**FASTENERS**

M8 x 20 BHCS black (6)

M8 hex nuts (6)

M8 flat washer black (6)

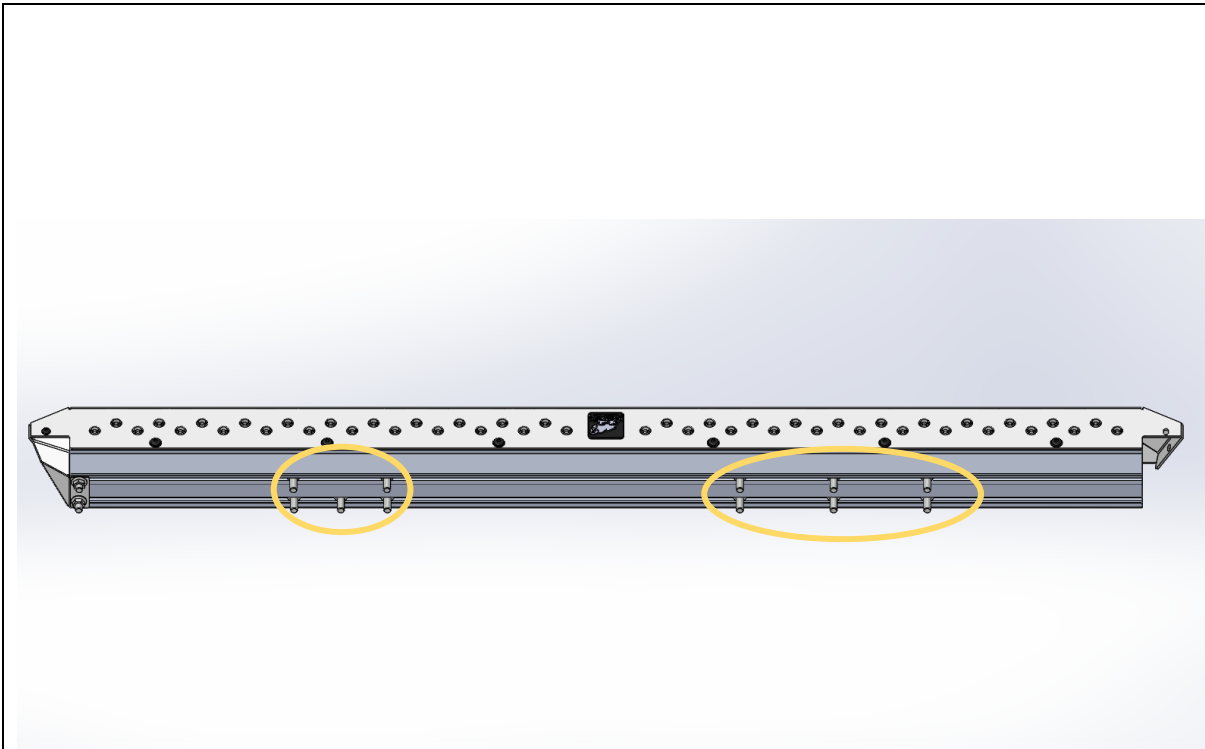


1. Fit end cap to one end of the extrusion.
2. First fit the 2x M6 Cage Nuts to the square holes on the end cap.
3. Slide 2x M10x25 Hex bolts into the T slots on back side of extrusion.
4. Next Fit end cap over these bolts.
5. Secure with M10 flange nuts on T slot bolts and M6x20 bolt in top and front side, through tread plate. End cap should align with end of tread plate if tread plate is centered correctly.

**TOOLS REQUIRED**

**FASTENERS**

- 2x M10x25 Bolts
- 2x M6x20 Button Head bolt
- 1xM6 Flat Washer
- 2x M10 Flange Nut



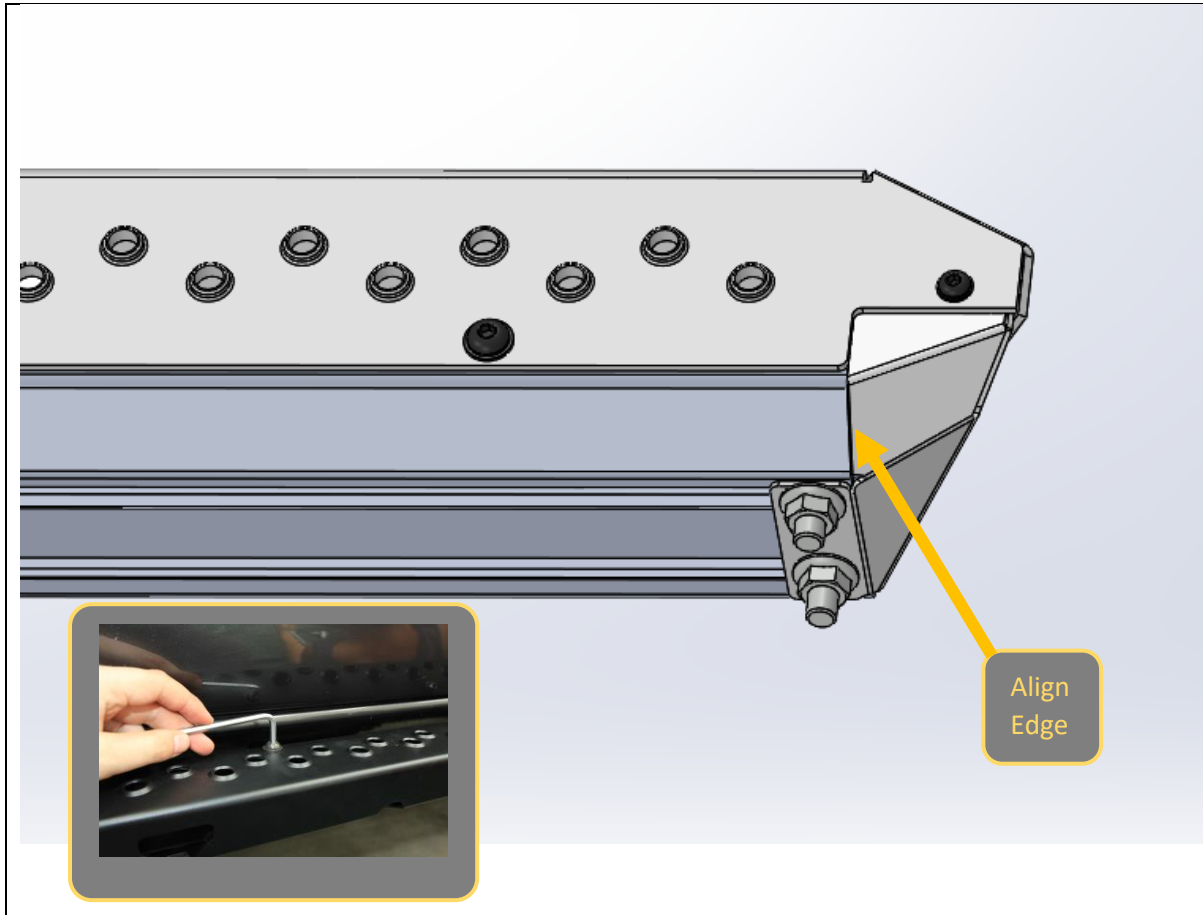
6. Slide the 11x M10x25 Hex bolts into the T slots on back side of extrusion. 6 bolts on bottom slot, 5 bolts on top slot.
7. Loosely arrange the bolts in 1x groups of 5 and 1x group of 6 in approximate location of mounts, as shown.

**TOOLS REQUIRED**

**FASTENERS**

12x M10x25 Bolts





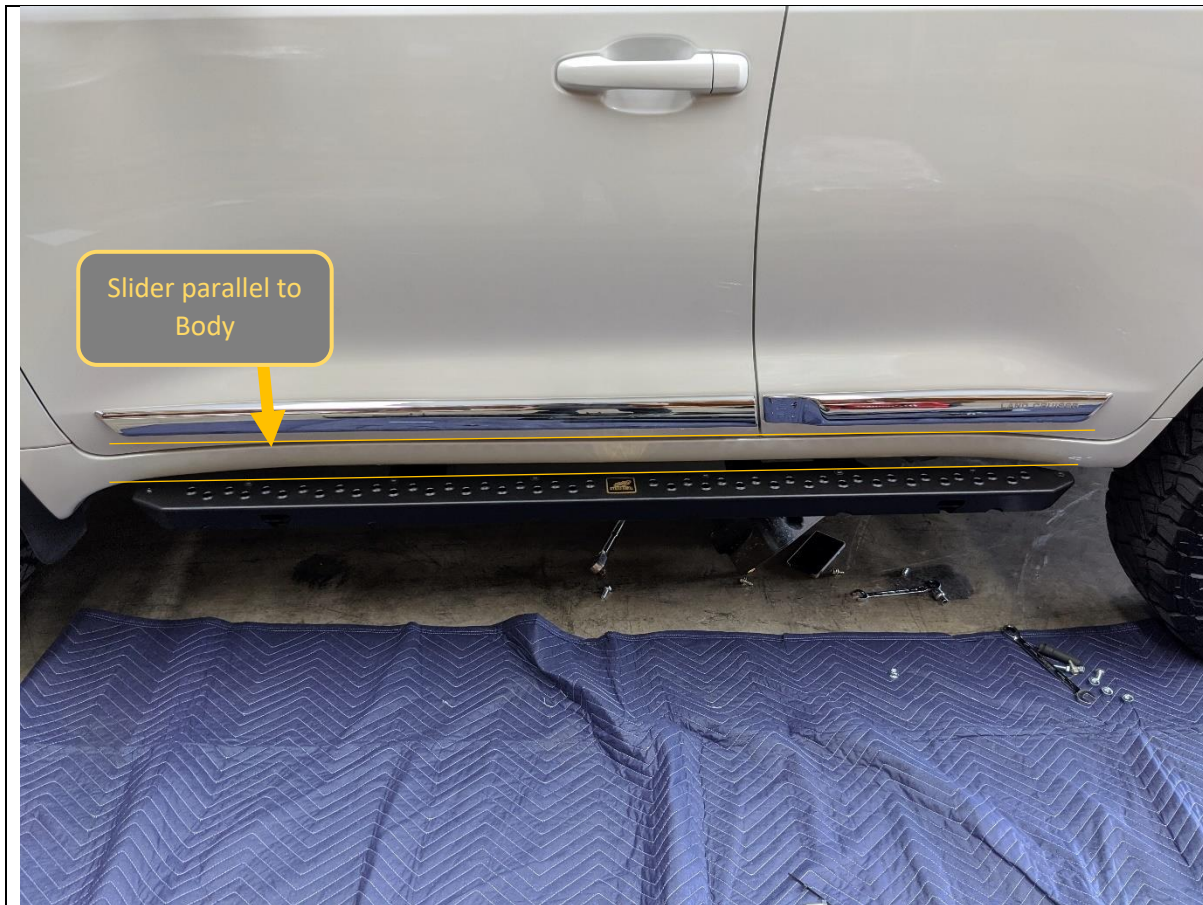
8. Fit mirrored end cap to remaining end of slider, using 2x M10x25 hex bolts and M8x20 Button head bolt with flat washer as per previous.
9. Check alignment of end caps, End cap should align with edge of tread plate if properly centered. Adjust end cap / tread plate position as required.
10. Once happy with alignment tighten all bolts on slider extrusion, using 5/6MM hex key and 15mm spanner.

**TOOLS REQUIRED**

- 5mm Hex key
- 6mm Hex key
- 15mm spanner

**FASTENERS**

- 2x M10x25 Bolts
- 1x M8x20 Button Head bolt
- 1xM8 Flat Washer
- 2x M10 Flange Nut



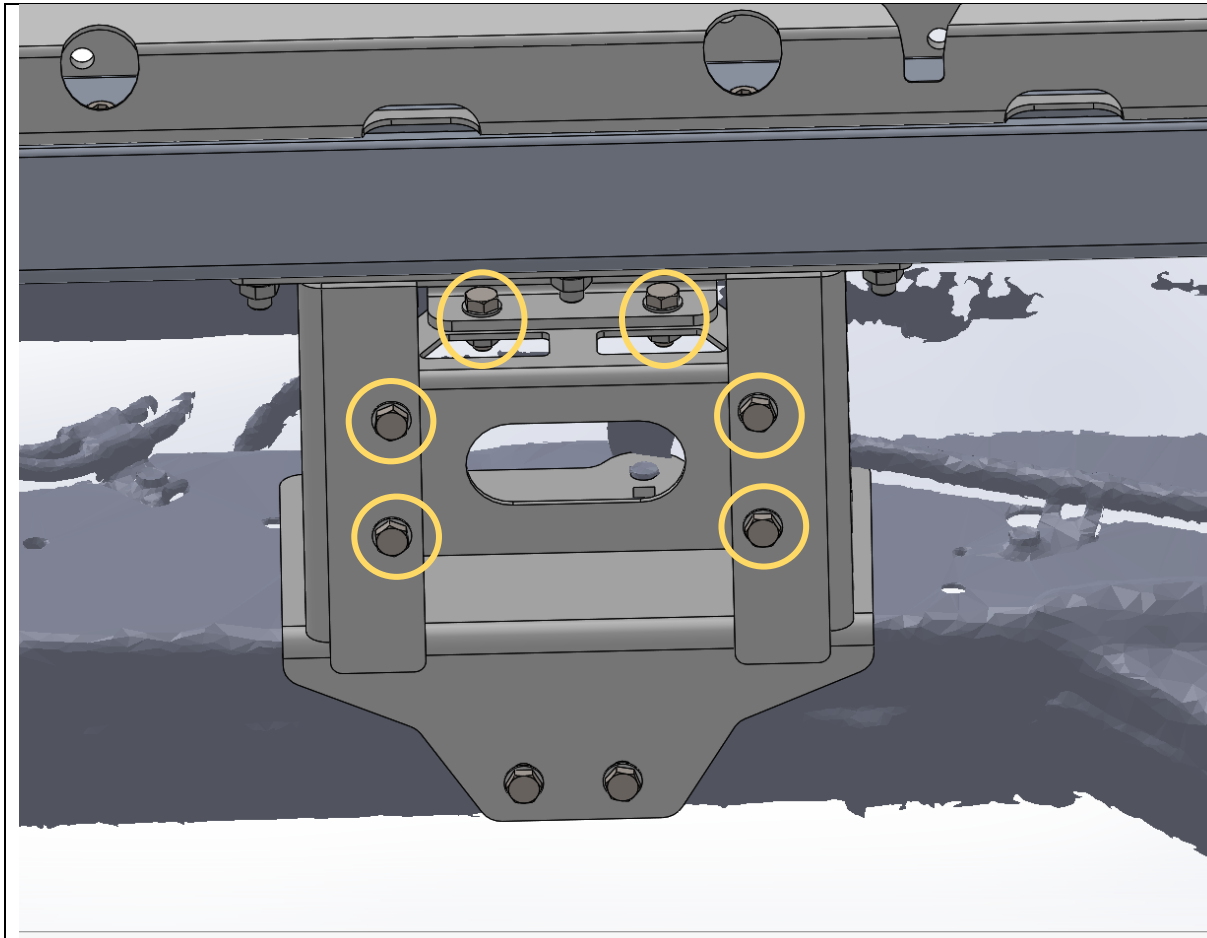
|   |  |
|---|--|
| <p>11. With Assistance from another person, or mechanical lifting aid such as a lift trolley, Lift the slider onto the mounts.</p>  | <p><b>TOOLS REQUIRED</b><br/>13mm Socket/Spanner<br/>16mm Socket/Spanner<br/>18mm Socket/Spanner</p> |
| <p>12. Manipulation of position of bolts in T slot to align with mounts will be required to get slider on. Secure with M10 Flange Nuts</p> <p>13. Adjust fore / aft position of sliders on mounts to achieve even appearance if required.</p> <p>14. Once satisfied with alignment, which should be parallel to the body, tighten all bolts, starting with chassis mounts.</p> <p>15. Tighten Chassis mount bolts using 18/16/13mm Sockets / Spanner.</p> | <p><b>FASTENERS</b></p> <p>11x M10 Flange Nut</p>  |



16. Tighten all mount to slider M10 flange nuts using 15mm spanner. A ratcheting spanner makes this process easier

**TOOLS REQUIRED**  
15mm Socket / Spanner

**FASTENERS**



17. Once all other bolts are tightened fit the rear mount brace to the rear mount using 6x M8x20 Bolts, Flat Washers and Flange Nuts.

18. Replace all factory fasteners securing hand brake cables.

**TOOLS REQUIRED**  
12mm socket  
13mm Socket/Spanner

**FASTENERS**  
6x M8x20 Bolts  
6x M8 Flat Washer  
6xM8 Flange Nut



|  |                              |
|--|------------------------------|
| <p>19. Fit the Offroad Animal logo plates to the steps, using the self-adhesive backing.</p> <p>20. Repeat the entire process for the other side of the vehicle.</p> <p>21. After that you are done!</p> | <p><b>TOOLS REQUIRED</b></p> |
|  | <p><b>FASTENERS</b></p>      |



**Congratulations!**  
**Head for the tracks and enjoy your newly protected Cruiser!**