

Toyota Landcruiser 200 Series MY2007-2014 (Pre Facelift) Predator & Toro Front Bar Fitting Instruction

IMPORTANT! – READ BEFORE INSTALLATION

- When installed in accordance with these instructions, the front protection bar does not affect the operation of the vehicles SRS airbags.
- This product must be installed exactly as per these instructions using only hardware supplied.
- Take a few moments to read instructions thoroughly before beginning work.
- In the event of damage to any bar component please contact OFFROAD ANIMAL to arrange repair/replacement of components.
- Do not use this product for any vehicle make or model other than that specified on these instructions.
- Do not remove labels from this product.
- This product and its fixings must not be modified in any way unless stated in these fitting instructions.
- The installation of this product is recommended for trained personnel.
- These instructions are correct at time of publication. OFFROAD ANIMAL cannot be held responsible for the impact of any changes subsequently made by the vehicle manufacturer. If you find something has changed please contact us to let us know!
- During installation it is the duty of the installer to check correct operation/clearances of all components.
- If Instructions are to be printed for reference in the workshop, it is recommended that they are printed in colour, for best legibility.

PARTS LISTING

IMPORTANT: Check all parts are present before beginning work! Contact OFFROAD ANIMAL if something is missing.

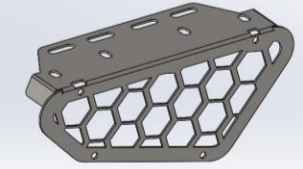
Main Parts – In the Box

Qty	Part Number	Description	Image
1	FB-TLC-200-07-PR-ASM1	LC200 Pre Facelift Predator Bar Welded Assy	
Or			
1	FB-TLC-200-07-TOR-ASM1	LC200 Pre Facelift Toro Bar Welded Assy	
1	FB-TLC-200-15-PR-ASM2L	LC200 Front Mount - Welded Assembly	
1	FB-TLC-200-15-PR-ASM2R	LC200 Front Mount - Welded Assembly	
1	FB-TLC-200-07-PR-ASM4L	LC200 Impact Brace Assembly	
1	FB-TLC-200-07-PR-ASM4R	LC200 Impact Brace Assembly	
1	U-0011	200 Series Bash Plate	
1	U-0008L	200 SERIES FRONT BAR - SIDE UNDERPANEL	



FB-TLC-200-07-PR-ASM0
Fitting Instruction

2007-2014 Toyota LC200
Front Bar

1	U-0008R	200 SERIES FRONT BAR - SIDE UNDERPANEL	
1	FB-TLC-200-07-PR-ASM2	LC200 Pre Facelift Mesh Fairlead Assy	
1	M-0002L	Light Cover Mesh	
1	M-0002R	Light Cover Mesh	
1	B-0910	LC200 PF Pan Brace	
1	B-0911L	LC200 PF Headlight Infill	
1	B-0911R	LC200 PF Headlight Infill	
1	B-0996L	LC200 PF Halo Fog Light Bracket	
1	B-0996R	LC200 PF Halo Fog Light Bracket	
1	NPF-COM-SM-ASM0	Number plate flip asm Small	
2	PWS-TOP-850	Pinch Weld – Top Bulb Seal 850mm	



2	FB-TLC-200-07-PR-ASM3	LC200 Pre Facelift Headlight Washer Infill	
2	CPHP035	Plastic Hole Insert, 22MM, Black, Tigerlink Hardware CPHP029	
1	FB-TLC-200-07-PR-ADRCP	ADR Compliance Plate 200 Series	
1	OFA-LOGO	Offroad Animal Metal Logo	
TORO BAR ONLY			
2	B-0649	Toro Antenna Bracket – 90 Degree Tall	



Predator Small Parts – Contained in Small Parts Kit Bag

QTY.	PART NO.	DESCRIPTION
8	M4X12 PAN	SCREW, PAN HEAD PHILLIPS, M4X12X0.7 GR4.6 ZP
8	M4 FLANGE NUT	Flange Nut, M4
23	M6x16 BHCS BLACK ZINC	SCREW, BUTTON HEAD CAP, M6X16X1 GR12.9, ISO4042 ZnNi BLACK PASSIVATED FINISH
4	M6x20 BHCS BLACK ZINC	SCREW, BUTTON HEAD CAP, M6X20X1 GR12.9, ISO4042 ZnNi BLACK PASSIVATED FINISH
27	M6 FLAT WASHER BLACK ZINC	M6 Flat Washer, 12x6.1x1, ISO4042 ZnNi BLACK PASSIVATED FINISH
13	M6 FLANGE NUT	Flange Nut, M6x1 G8.8 ZP
10	M6CN3MM	CAGE NUT M6x2.6-3.5
4	M8 X 12 HEX	Bolt Hex, M8X12x1.25, GR8.8 ZP
2	M8 X 20 HEX	Bolt Hex, M8X20x1.25, GR8.8 ZP
2	M8 X 25 HEX	Bolt Hex, M8X25x1.25, GR8.8 ZP
2	M8 X 16 BHCS BZP	SCREW, BUTTON HEAD CAP, M8X16X1.25 GR12.9, ISO4042 ZnNi BLACK PASSIVATED FINISH
6	M8 X 20 BHCS BLACK ZINC	SCREW, BUTTON HEAD CAP, M8X20X1.25, ISO4042 ZnNi BLACK PASSIVATED FINISH
6	M8 FLAT WASHER	M8 FW
2	M8 HD FLAT WASHER	M8 FLAT WASHER - High Tensile 19x8x1.9mm
8	M8 FLAT WASHER- BLACK ZINC	M8 FLAT WASHER, 16.5x8.4x1.2, ISO4042 ZnNi BLACK PASSIVATED FINISH
6	M8 FLANGE NUT	Flange Nut, M8x1.25 G8.8 ZP
2	M10X25 BHCS	SCREW, BUTTON HEAD CAP, M10X25X1.5 GR12.9 ZP
2	M10 Flat Washer	M10 FW
2	M10 FLANGE NUT	Flange Nut, M10x1.5 G8.8 ZP
8	M12X30	Bolt Hex, M12X30x1.75, GR8.8 ZP
8	M12 FW LHD	M12 FW Large Heavy Duty
6	M12 FLANGE NUT	Flange Nut, M12x1.75 G8.8 ZP
2	M12 Nyloc nut	M12 NYLOC NUT
2	M12 FLAT WASHER	M12 FW
2	M12X100	Bolt Hex, M12X100x1.75, GR8.8 ZP
2	T-0086	Toyota LC200 Impact Brace Crush Tube
2	NP-COM-M12-30-ASM0	M12 NUT PLATE SHORT, 30MM STEM



Toro Small Parts Kit – Contained in Small Parts Kit Bag

QTY.	PART NO.	DESCRIPTION
8	M4X12 PAN	SCREW, PAN HEAD PHILLIPS, M4X12X0.7 GR4.6 ZP
8	M4 FLANGE NUT	Flange Nut, M4
23	M6x16 BHCS BLACK ZINC	SCREW, BUTTON HEAD CAP, M6X16X1 GR12.9, ISO4042 ZnNi BLACK PASSIVATED FINISH
4	M6x20 BHCS BLACK ZINC	SCREW, BUTTON HEAD CAP, M6X20X1 GR12.9, ISO4042 ZnNi BLACK PASSIVATED FINISH
27	M6 FLAT WASHER BLACK ZINC	M6 Flat Washer, 12x6.1x1, ISO4042 ZnNi BLACK PASSIVATED FINISH
13	M6 FLANGE NUT	Flange Nut, M6x1 G8.8 ZP
10	M6CN3MM	CAGE NUT M6x2.6-3.5
4	M8 X 12 HEX	Bolt Hex, M8X12x1.25, GR8.8 ZP
2	M8 X 20 HEX	Bolt Hex, M8X20x1.25, GR8.8 ZP
2	M8 X 25 HEX	Bolt Hex, M8X25x1.25, GR8.8 ZP
2	M8 X 16 BHCS BZP	SCREW, BUTTON HEAD CAP, M8X16X1.25 GR12.9, ISO4042 ZnNi BLACK PASSIVATED FINISH
10	M8 X 20 BHCS BLACK ZINC	SCREW, BUTTON HEAD CAP, M8X20X1.25, ISO4042 ZnNi BLACK PASSIVATED FINISH
6	M8 FLAT WASHER	M8 FW
2	M8 HD FLAT WASHER	M8 FLAT WASHER - High Tensile 19x8x1.9mm
12	M8 FLAT WASHER- BLACK ZINC	M8 FLAT WASHER, 16.5x8.4x1.2, ISO4042 ZnNi BLACK PASSIVATED FINISH
6	M8 FLANGE NUT	Flange Nut, M8x1.25 G8.8 ZP
2	M10X25 BHCS	SCREW, BUTTON HEAD CAP, M10X25X1.5 GR12.9 ZP
2	M10 Flat Washer	M10 FW
2	M10 FLANGE NUT	Flange Nut, M10x1.5 G8.8 ZP
8	M12X30	Bolt Hex, M12X30x1.75, GR8.8 ZP
8	M12 FW LHD	M12 FW Large Heavy Duty
6	M12 FLANGE NUT	Flange Nut, M12x1.75 G8.8 ZP
2	M12 Nyloc nut	M12 NYLOC NUT
2	M12 FLAT WASHER	M12 FW
2	M12X100	Bolt Hex, M12X100x1.75, GR8.8 ZP
2	T-0086	Toyota LC200 Impact Brace Crush Tube
2	NP-COM-M12-30-ASM0	M12 NUT PLATE SHORT, 30MM STEM




TOOLS REQUIRED

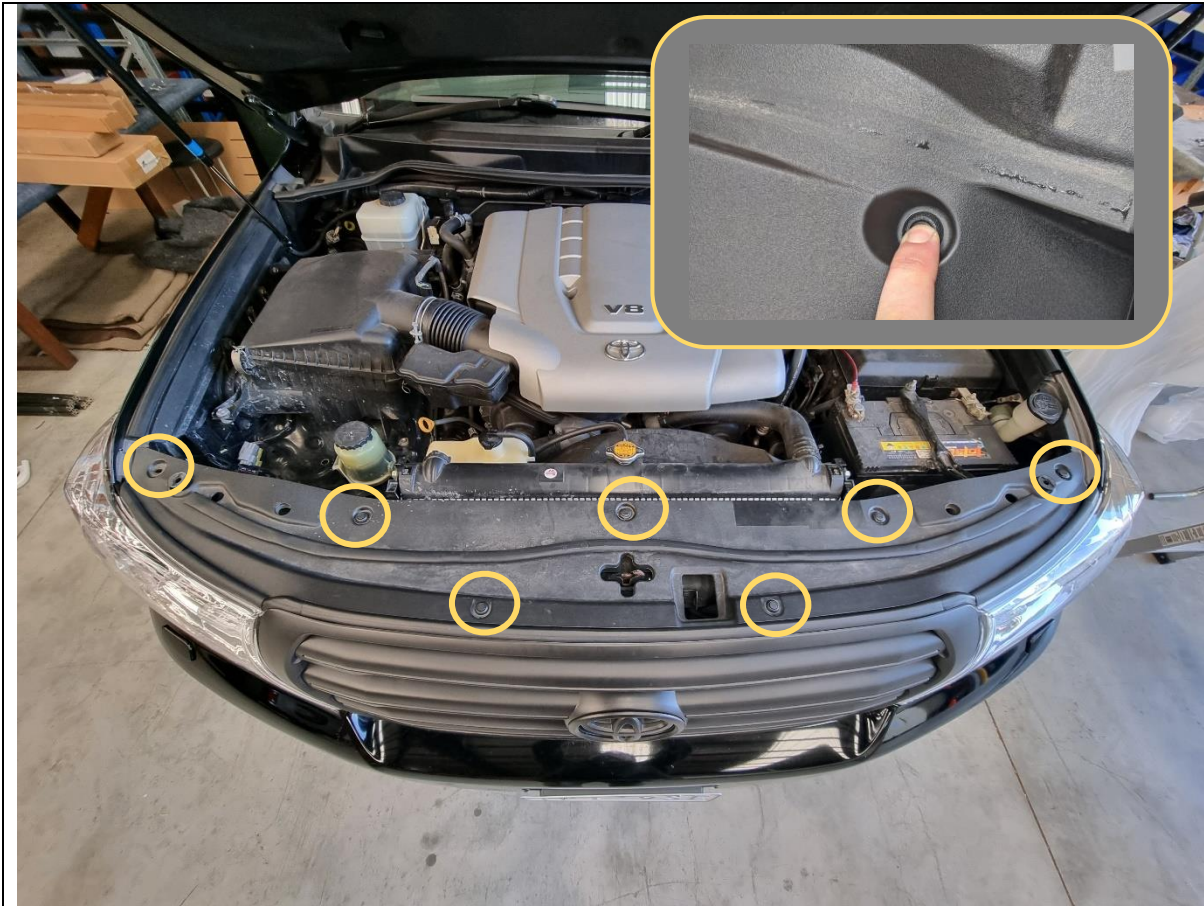
The following tools will be required to install the product.

Hand Tools	Power Tools	Workshop Supplies
Metric Socket Set 8-19mm Socket Extension Bar Metric Spanner Set 10-19mm Torx Drivers T25-T30 Hex (Allen) Key Set 4-6mm Trim Puller Tool Flat Blade Screwdriver set Phillips Head Screwdriver set Utility Knife Side Cutters Pliers	Electric Drill 6mm Drill Bit Air Hacksaw or Angle Grinder Electric/Air Impact Driver (Optional)	Double Sided Adhesive Tape Panel Stand or Soft Blanket Cable Ties Masking Tape Black Automotive paint Scotch Brite or Fine Sandpaper Automotive Sealant/Adhesive Bucket Hose Clamp

WORKSHOP SAFETY

It is the responsibility of the installer to always complete works in a safe manner. Make sure the following safety equipment is available and precautions are observed whilst fitting this product.

<p>Hearing Protection</p> 	<p>Always wear ear protection when using power tools.</p>
<p>Eye Protection</p> 	<p>Ensure eye protection is always worn when cutting or drilling.</p>
<p>Manual Handling</p> 	<p>Do not attempt to lift bar assemblies or rock sliders on your own.</p> <p>Always use two people to lift or use mechanical Lifting aid such as hydraulic lifting trolley.</p>
<p>Vehicle Support</p> 	<p>Always ensure vehicle is properly supported when working on it. Do not attempt to fit products whilst suspension work is being carried out. Do not work under a vehicle supported only by a jack.</p>



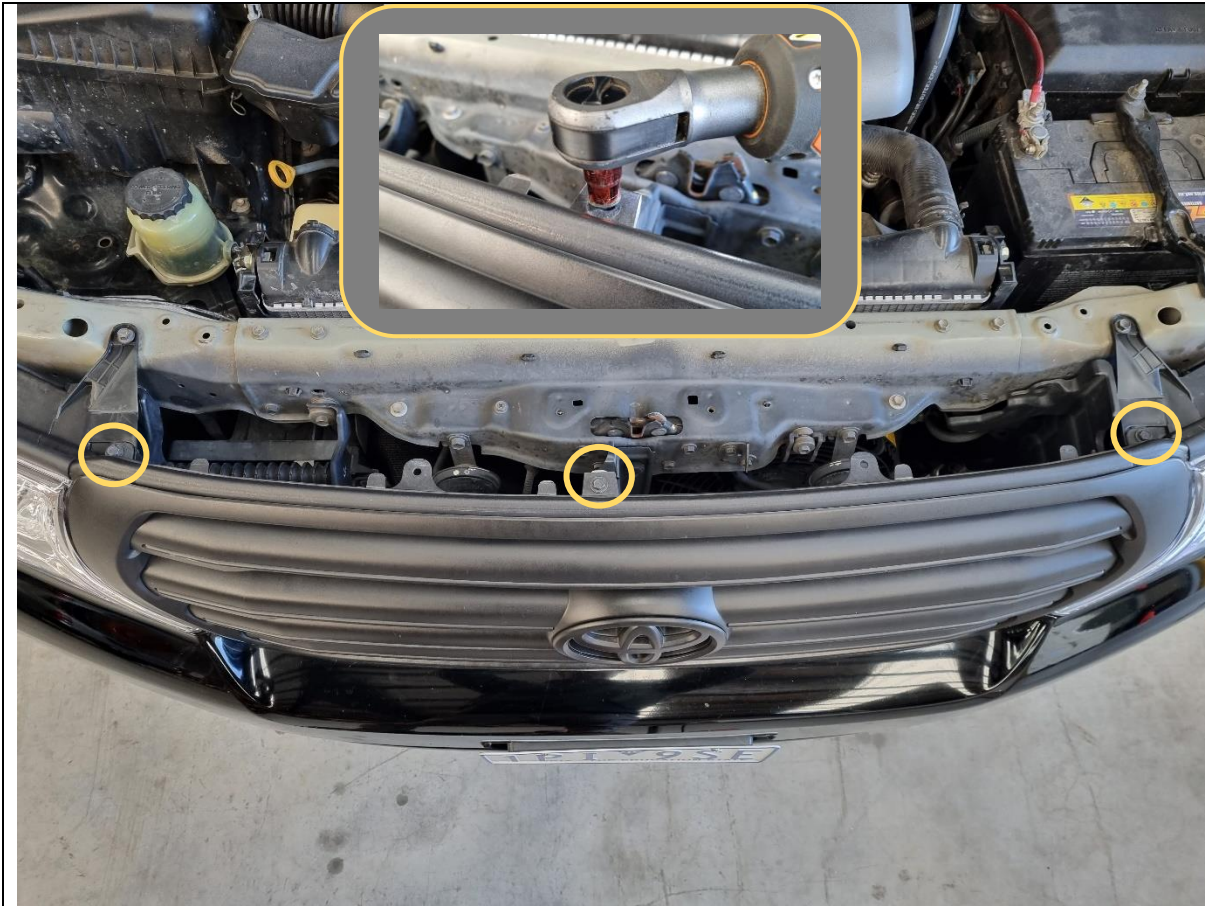
1. Open the bonnet.
2. Remove clips securing the top radiator cowling. Press down on the centre button of clip to unlock, then remove clip with trim tool.
3. Retain all clips for reassembly.

TOOLS REQUIRED

Trim Tool

FASTENERS

Retain Factory



4. Remove the 3x Bolts securing top grille to body using 10mm socket.

TOOLS REQUIRED

10mm socket

FASTENERS

Retain Factory

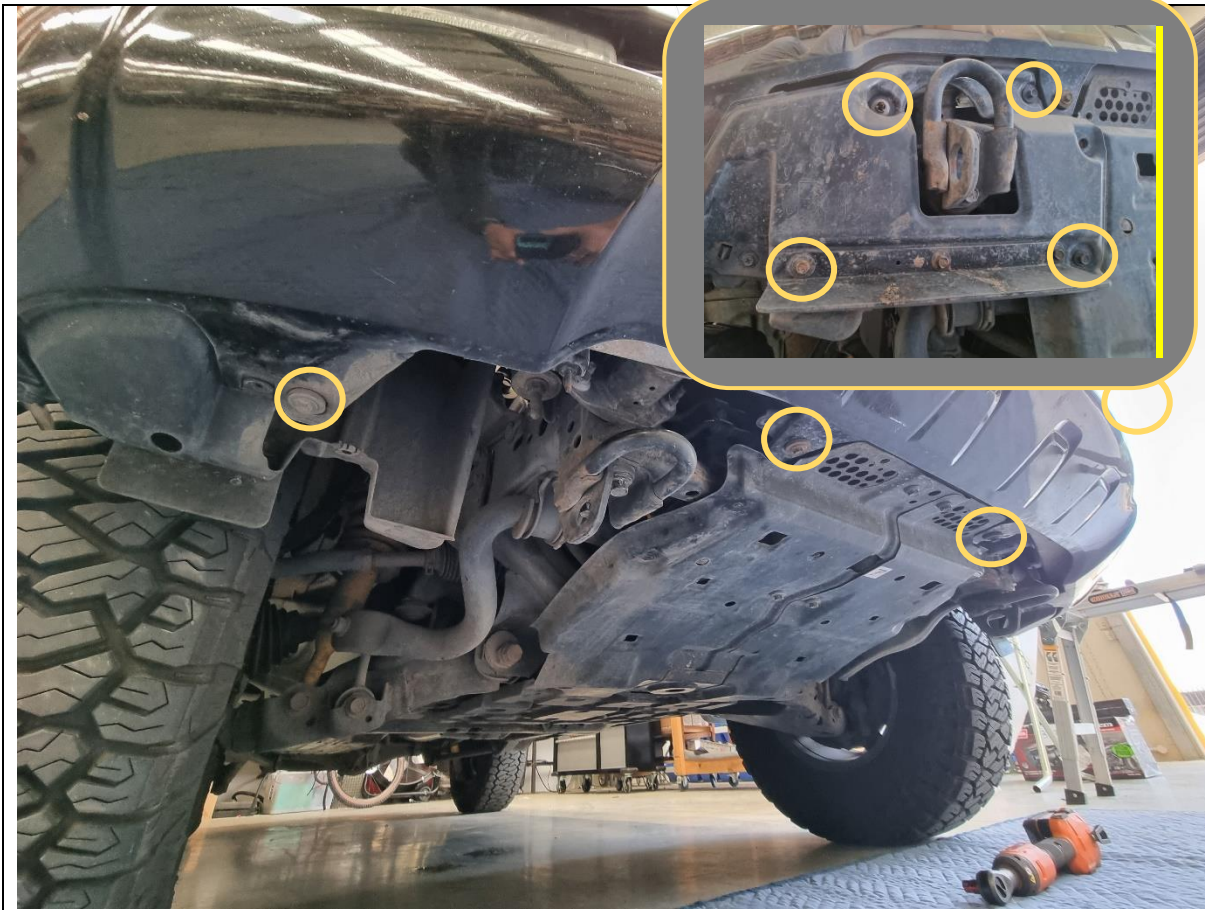


5. Behind the grille release the 4x clips securing the bumper to the cross beam.

TOOLS REQUIRED

Trim Tool

FASTENERS



6. Remove the shrouds surrounding the tow point by removing the 10mm head screws and plastic nut securing the shroud.
7. Remove 10mm head screws securing the bottom edge of the bumper to the vehicle.

TOOLS REQUIRED

10mm socket

FASTENERS

Factory Bolts (Discard)



8. Remove the T30 Torx screws securing bumper to the wheel arch liner.

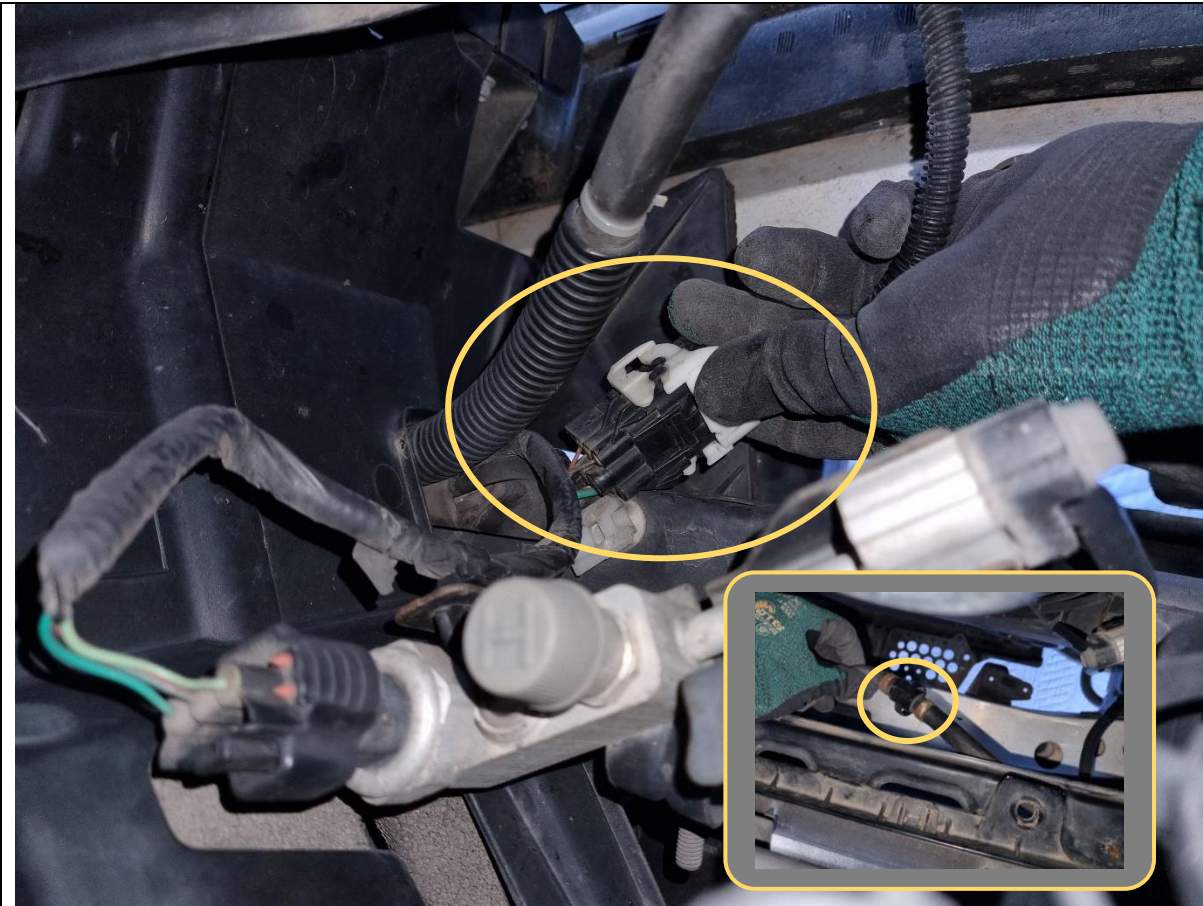
9. Complete on both sides of the vehicles

TOOLS REQUIRED

T30 Torx Driver

FASTENERS

Factory Torx Screws (Discard)



10. Disconnect the main electrical harness, located on the LHS of vehicle near bottom of grille.

11. For vehicles equipped with headlight washers, disconnect the headlight washer hose at the quick connect fitting.

If there is any washer fluid in the reservoir it will spill out. Have a bucket on hand to drain the washer fluid or use a hose clamp to prevent the fluid from leaking

12. For vehicles equipped with a front camera, disconnect the electrical harness connector located on the back of the grille.

TOOLS REQUIRED

Bucket or Hose Clamp

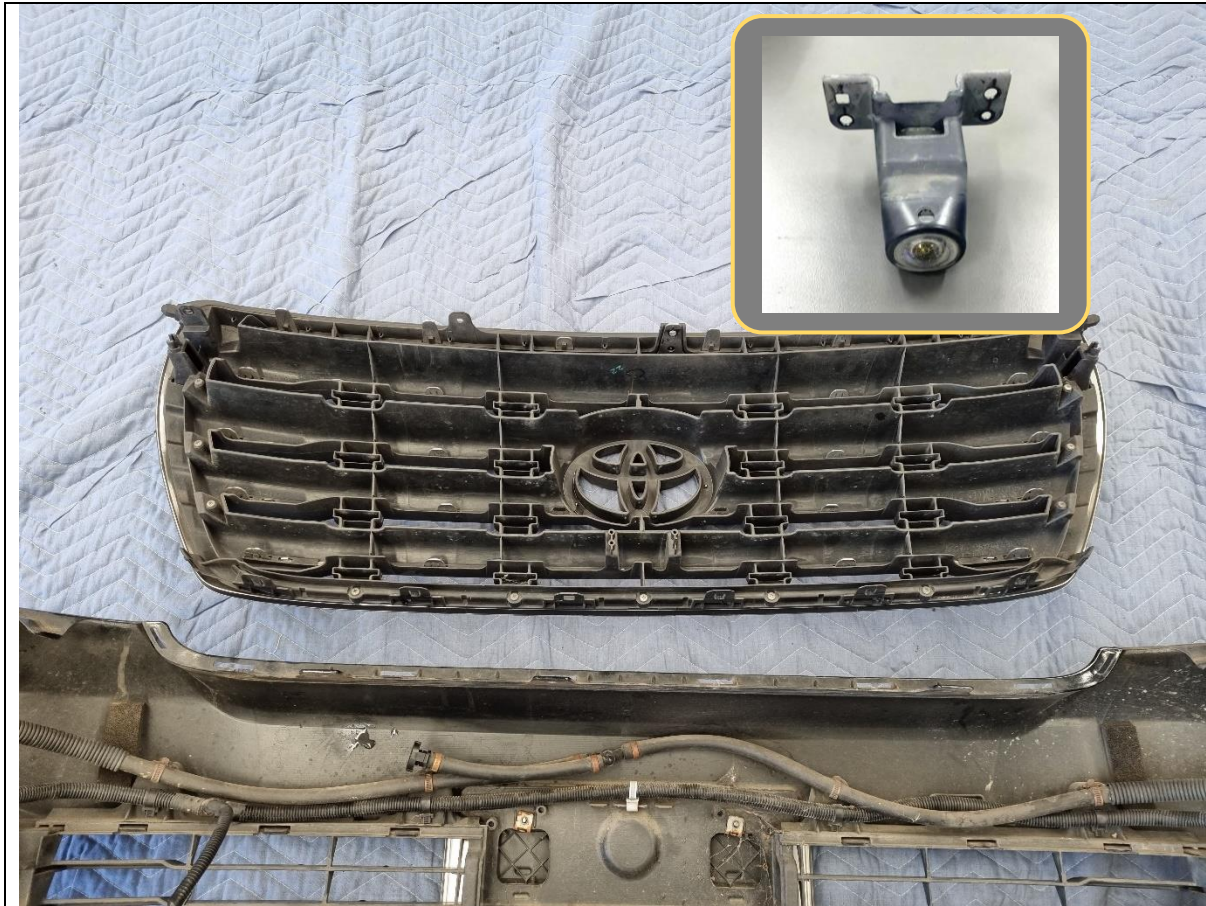
FASTENERS



13. Starting from the wheel arch, carefully pull the bumper away from the body of the vehicle to release the clips.
14. Once all clips are released, carefully lift the bumper from the car and set aside on a soft surface.

TOOLS REQUIRED

FASTENERS



15. Remove the grille from the bumper by pinching and pushing forward the clips securing the bottom edge of grille to bumper.
16. If choosing the option to relocate the front camera, unscrew the camera from the back of the grille and set aside. Take note of the camera orientation (e.g. which way is up).

Note: If vehicle is fitted with front camera, the bar will obscure bottom part of front camera image. Additionally, if a large light bar is fitted this will also obscure image in default badge location.

Note: Optional camera relocation kit sold separately.

TOOLS REQUIRED

FASTENERS



17. Disconnect the Fog light harness from the fog light.
18. Remove both the electrical harness, and headlight washer pipes from the bar, by prying out the clips using trim tool.
19. Complete on both sides of bumper.

TOOLS REQUIRED

Phillips head Screwdriver
Trim tool

FASTENERS

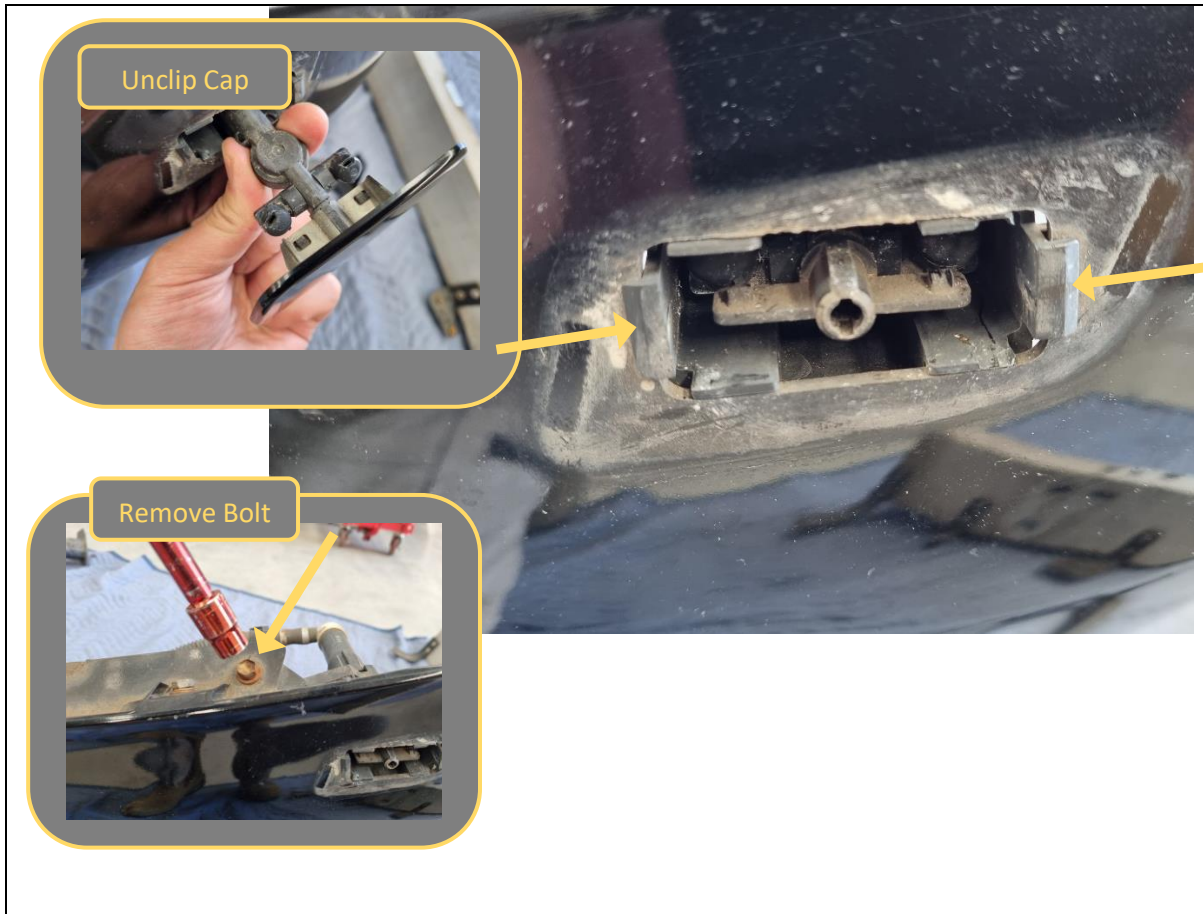
Discard Factory Screws



20. Disconnect the parking sensors from the loom by first prying open the plastic housing, then disconnecting the multi plug connector.
21. Squeeze the small retaining tabs on the sensor housing whilst pushing the sensor forward, through the bumper. The tabs should release and allow the sensor to be removed from the front of the bumper as shown.

TOOLS REQUIRED

FASTENERS



<p>22. If vehicle is equipped, remove headlight washers from the bumper. Start by disconnecting the supply hose.</p> <p>23. Pull out washer head and unclip the cap.</p> <p>24. Unscrew the Bolt securing to bumper with 10mm socket.</p>	<p>TOOLS REQUIRED</p> <p>10mm Socket / Spanner</p>
<p>25. Squeeze the retaining tabs together and push through bumper to release.</p>	<p>FASTENERS</p>



26. Remove the plastic bumper retainers by removing the screws, then prying out the large clip from behind using trim tool

TOOLS REQUIRED

10mm socket or
Phillips head screwdriver
Trim Tool

FASTENERS

Phillips Head screw.



27. On vehicles with light color paint, It is recommended to paint the under headlight areas that will be visible through bar clearance gaps and mesh panels.

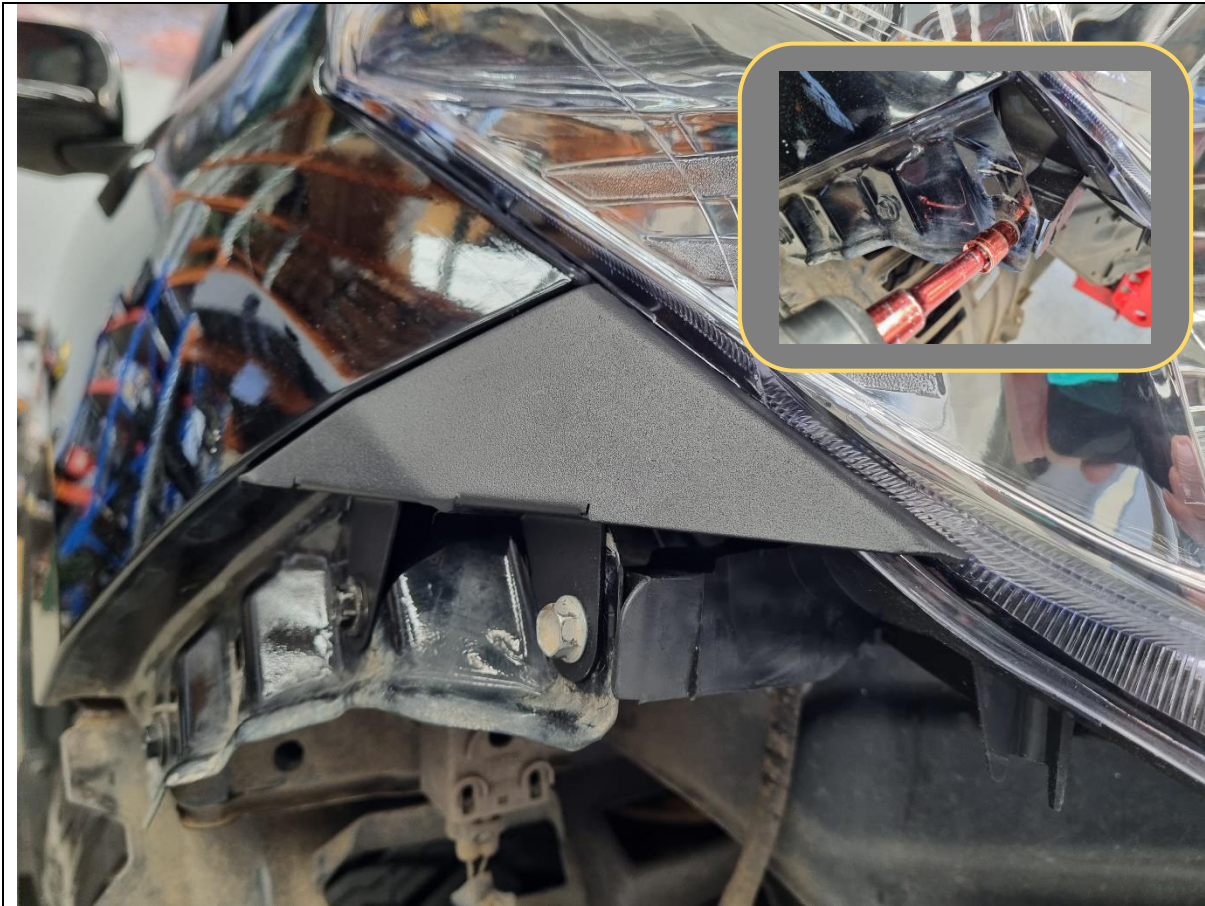
28. Mask off headlight and panel using masking tape as shown.

29. Paint area using Matte black automotive grade paint.

TOOLS REQUIRED

Masking Tape
Black Automotive Paint

FASTENERS



30. Remove the factory M6 Bolts securing the headlight and fender immediately behind the plastic bumper retainer.
31. Fit the headlight infill panel, using new supplied M6x20 Black Button Head Bolts, and Black Washers
32. Complete for both sides of vehicle.

TOOLS REQUIRED

10mm Socket
4mm hex key

FASTENERS

2x M6x20 Black Button Head Bolts
2x M6 Black Flat Washer
Per Side



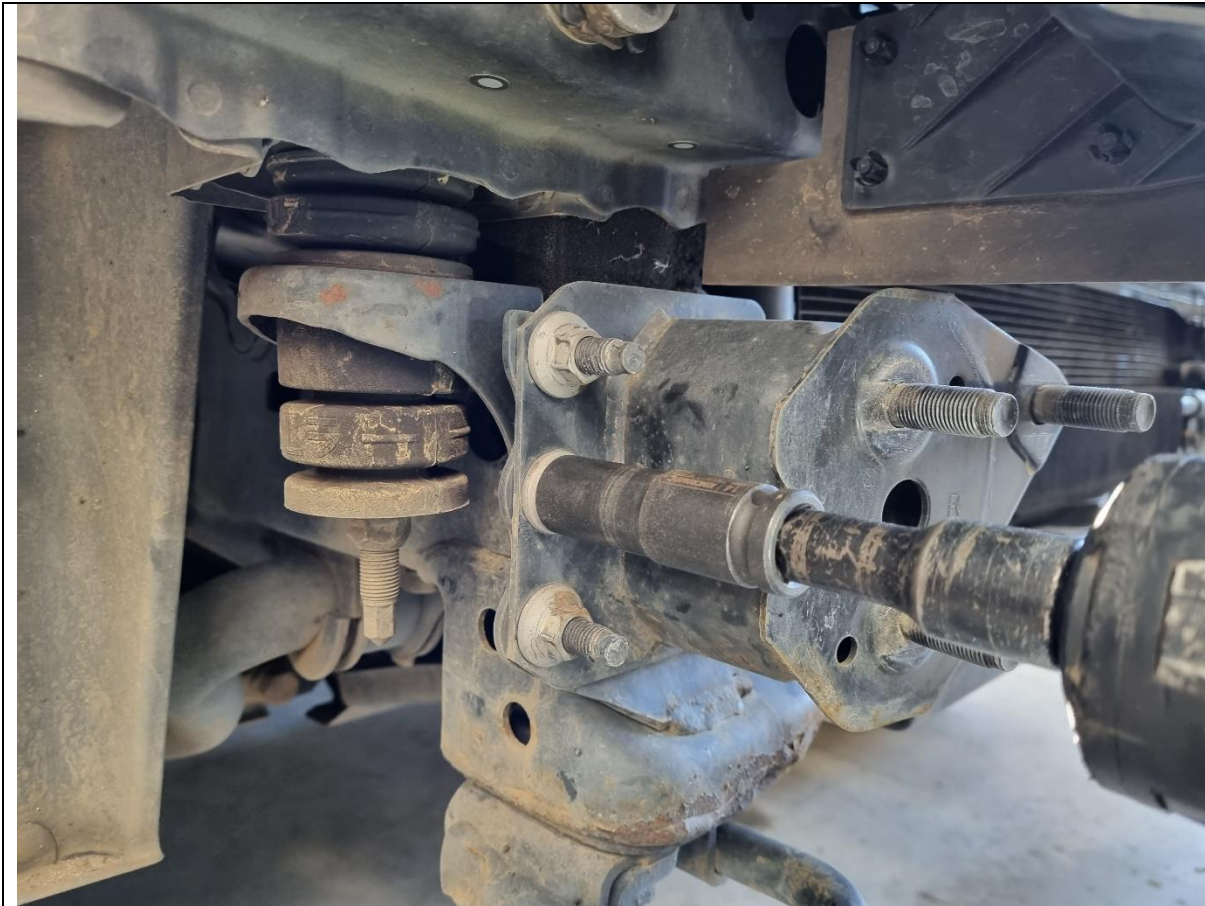
33. Remove the foam covering the impact beam assembly by lifting it off.
34. Remove the 6x 14mm head bolts holding the impact beam to the impact beam brackets.
35. Remove and set aside the aluminum impact beam.

TOOLS REQUIRED

14mm Socket
Extension Bar

FASTENERS

6x 14mm Head factory bolts



36. Remove Steel impact beam mounts by removing the 5x 14mm head flange nuts on each side.

37. Retain nuts for fitment of bulbar mounts.

TOOLS REQUIRED

14mm Spanner / Socket

FASTENERS

14mm Head Factory Flange Nuts



38. Remove the Factory tow point, by removing the 17mm head factory bolts.

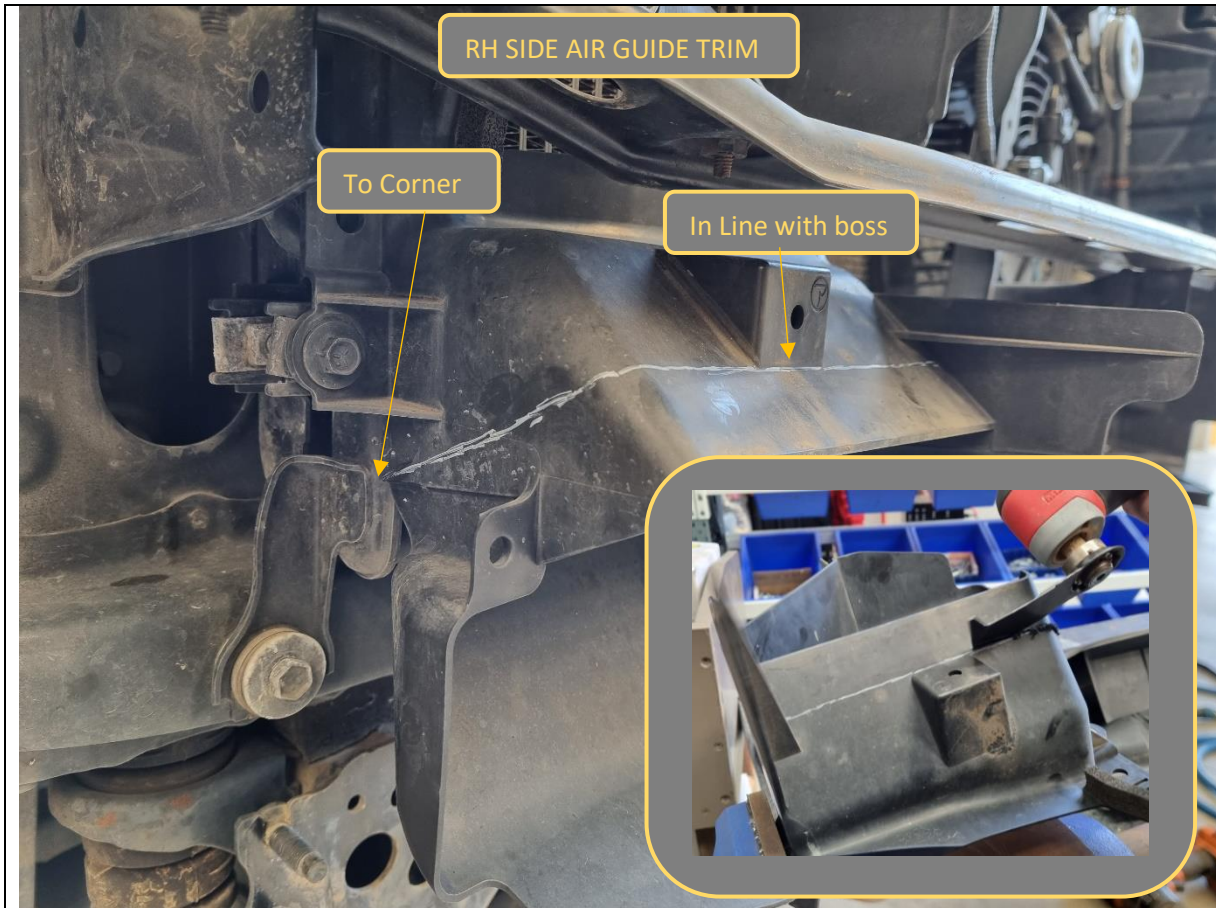
39. Retain bolts for fitment of bulbar mounts.

TOOLS REQUIRED

17mm Socket

FASTENERS

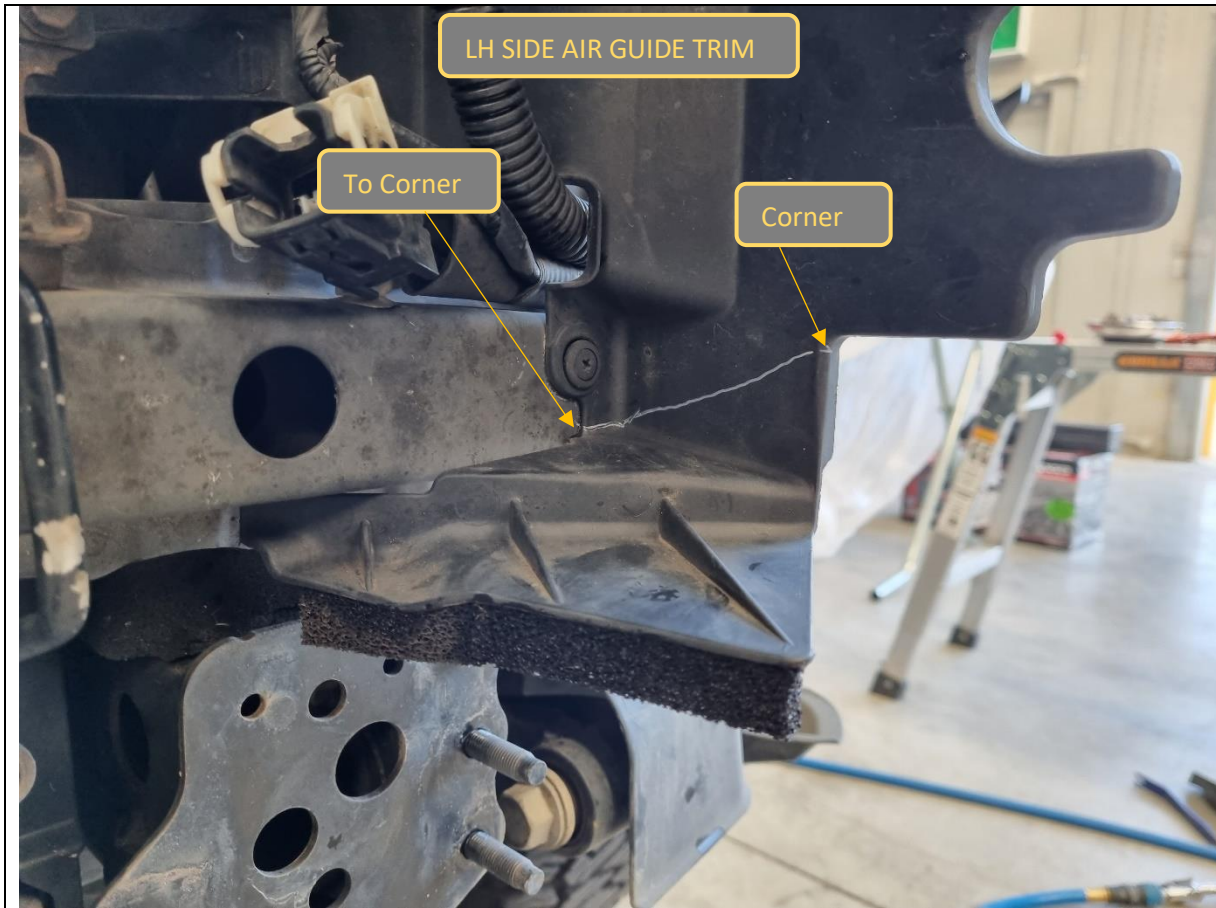
17mm Head Factory Bolts



40. Plastic air guides need to be trimmed to allow clearance for the bulbar mounts.
41. For RH Side, using a sharp utility knife or an air hacksaw, cut along the corners as shown in the image.
42. It can be easier to remove guide by removing the 4x Bolts securing the guide to the cooler and perform the cut in a vice.
43. See next step for LH Side.

TOOLS REQUIRED
Utility knife,
Air Hacksaw
or
Oscillating Multi tool

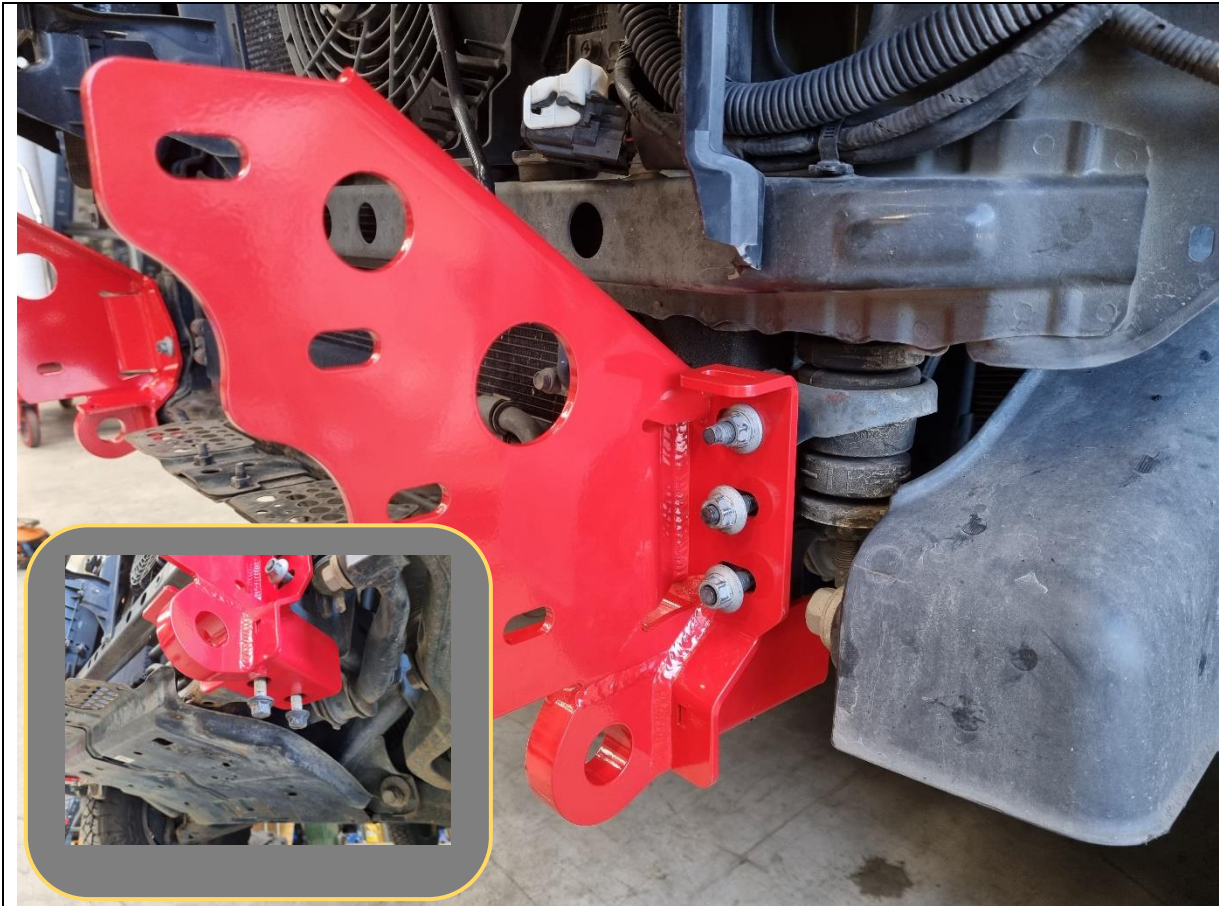
FASTENERS



44. For LH Side, using a sharp utility knife or an air hacksaw, cut along the corners as shown in the image.
45. It is not necessary to remove the air guide for LH side trim.

TOOLS REQUIRED
Utility knife,
Air Hacksaw
or
Oscillating Multi tool

FASTENERS



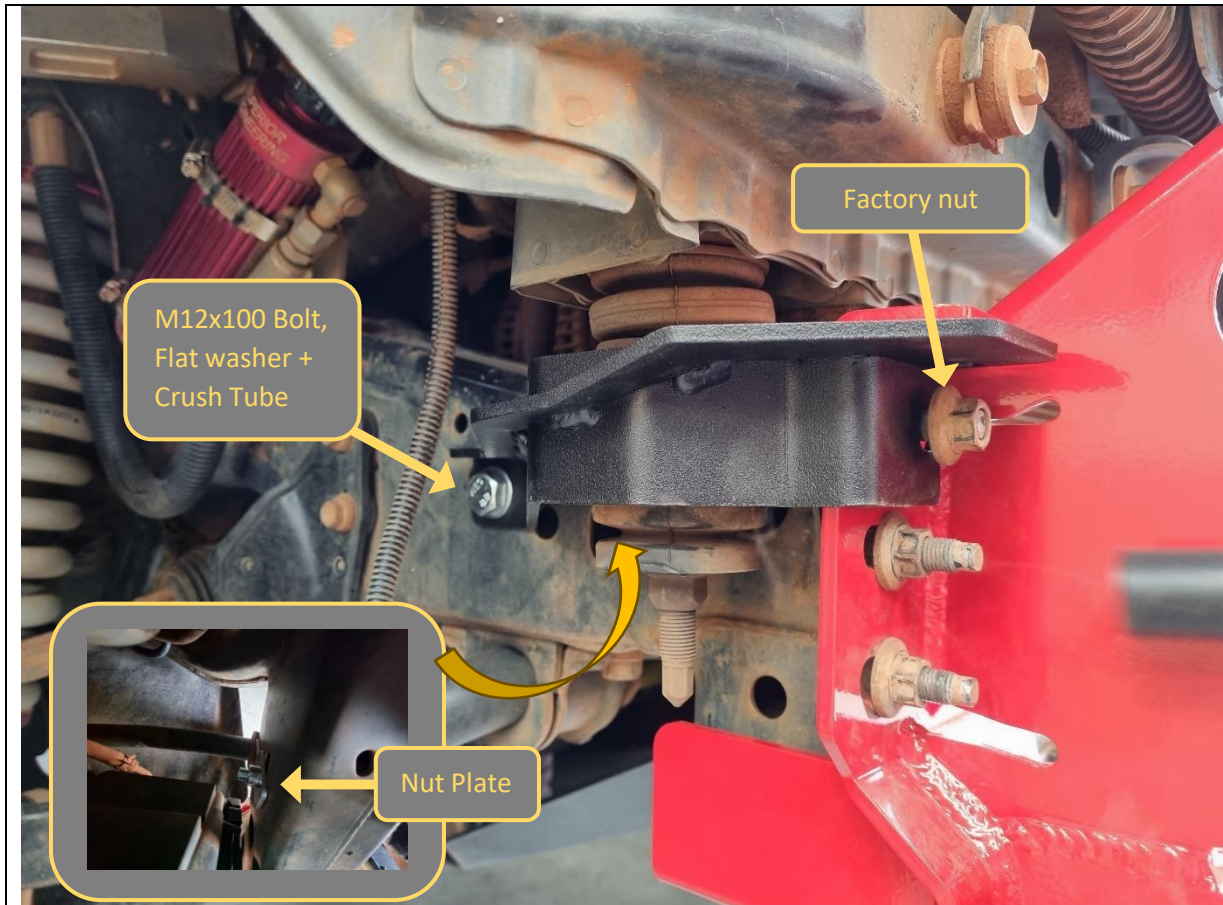
46. Fit the Impact mounts to the chassis, re using the original factory flange nuts (front) and Bolts (Bottom) as shown.

47. Leave bolts finger tight at this stage.

TOOLS REQUIRED

FASTENERS

Re-Use Factory



48. Fit the chassis brace between the impact assembly and the square slot in the chassis as shown, Secure at the front using the factory nut.

49. Using supplied nut plate, secure M12x100 bolt, washer and crush tube through chassis rail.

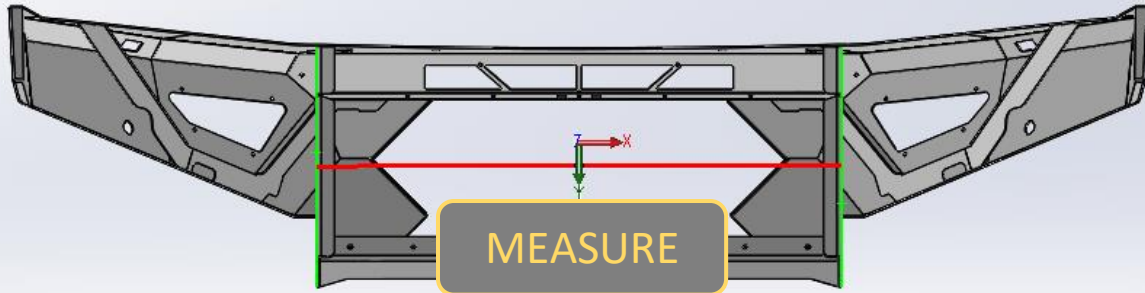
You will need to reach behind the cooling pack with the nut plate to reach the location where the M12x100 bolt comes through on the other side of the chassis rail.

50. Leave bolts finger tight at this stage.

TOOLS REQUIRED

FASTENERS

2x M12x100 hex bolt
2x M12 flat washer
2x Crush tube
2x nutplate



51. Measure Distance between outside edges uprights on bar using tape measure. Write distance below for reference if required.

Bar Upright Width = _____ mm

52. Adjust mounts by sliding mounts on slots, such that distance between outside edges of mounts is approximately 2mm less than bar.

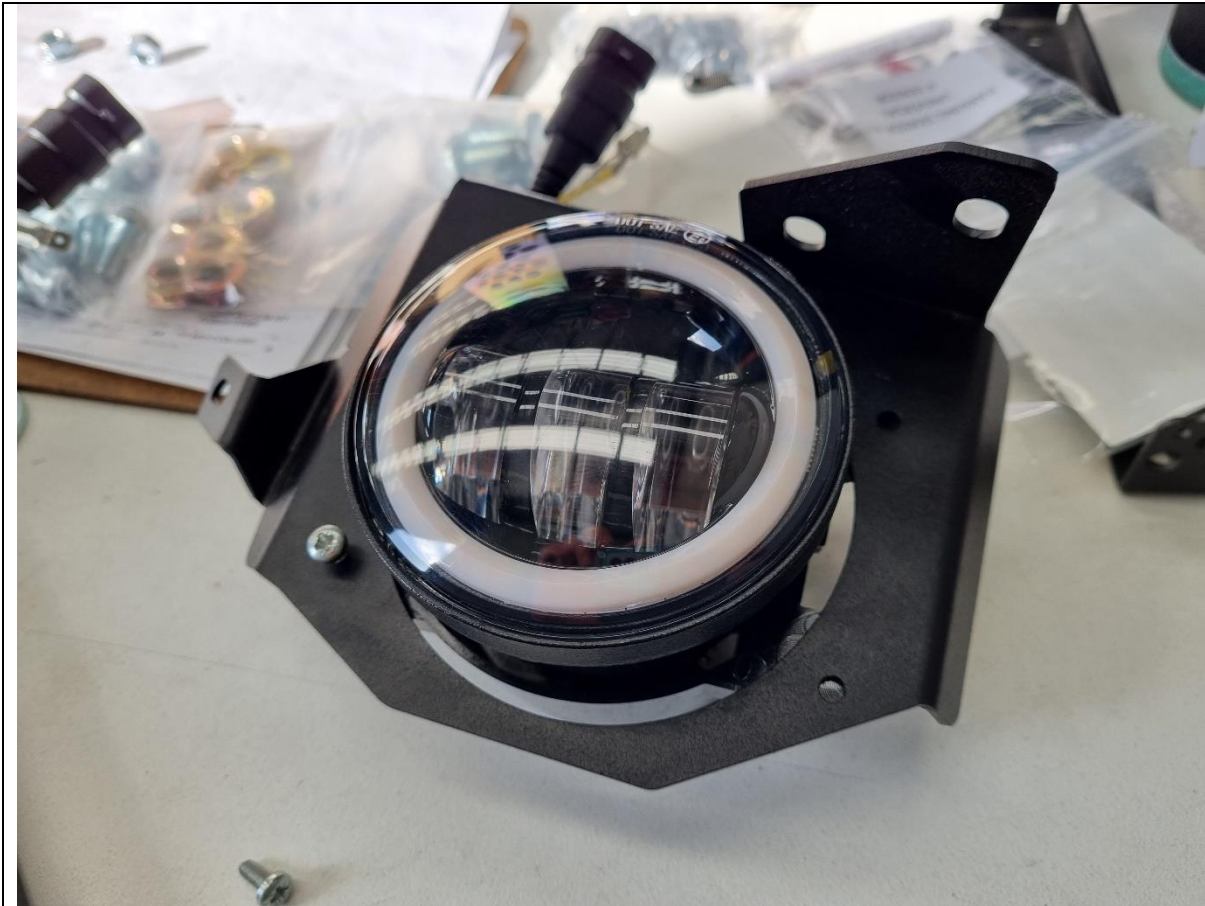
53. Secure and tighten mounts.

TOOLS REQUIRED

TAPE MEASURE

FASTENERS

Factory Nuts to secure mounts



54. If optional, fit Offroad Aimal fog lamps to the fog light brackets using M4 Screws, Flat washers, and Flange nuts from the Small Parts Kit.
55. Secure and tighten using Phillips head screwdriver and 7mm Spanner.

TOOLS REQUIRED

Phillips Screwdriver
7mm Spanner / Socket

FASTENERS

4x M4x16 Pan head Screw
4x M4 Flat Washer
4x M4 Flange Nut



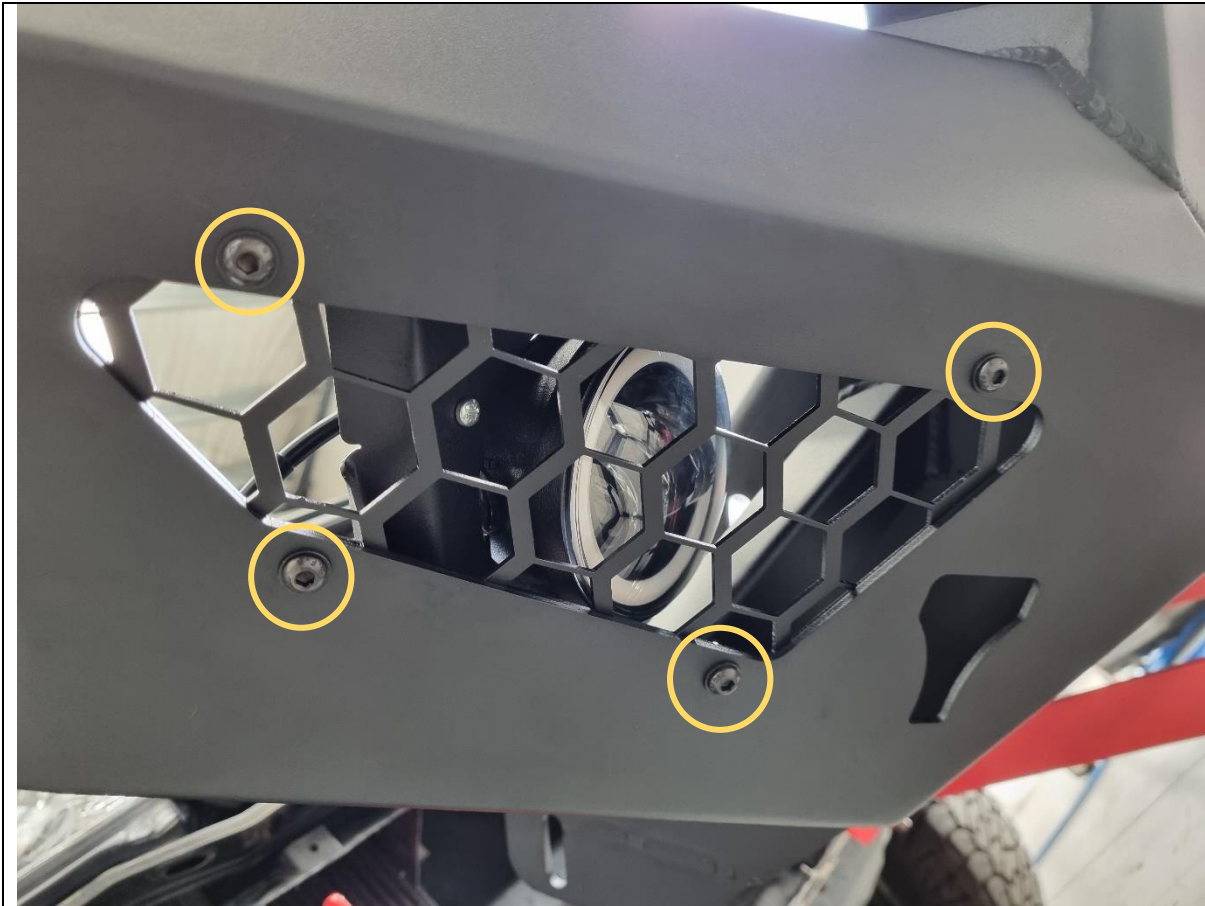
56. Fit fog light bracket, with fog light in place to the Mesh panel using 2x M8x12.
57. Alternatively, if fitting other lights to mesh (such as cube light), do so now.
58. Secure and tighten using 13mm Spanner or socket.
59. Repeat for other side of bar.

TOOLS REQUIRED

13mm Spanner / Socket

FASTENERS

2x M8x12 Hex
2x M8 Flat Washer
2x M8 Flange Nut



60. Fit the mesh panels to the wing of the bar. Using the supplied M6x16 Black Button Head fasteners.
61. Secure and tighten using 4mm Hex Key.
62. Repeat for other side of bar.

TOOLS REQUIRED

4mm Allen Key
10mm Spanner / Socket

FASTENERS

4x M6x16 Black Button Head
4x M6 Black Flat Washer
4x M6 Flange Nut



63. Fit 5x Cage nuts from small parts kit to rectangular slots in bottom of wing.

Use a small flat bladed screwdriver to push the edge of the cage to engage with the slot to aid fitting.

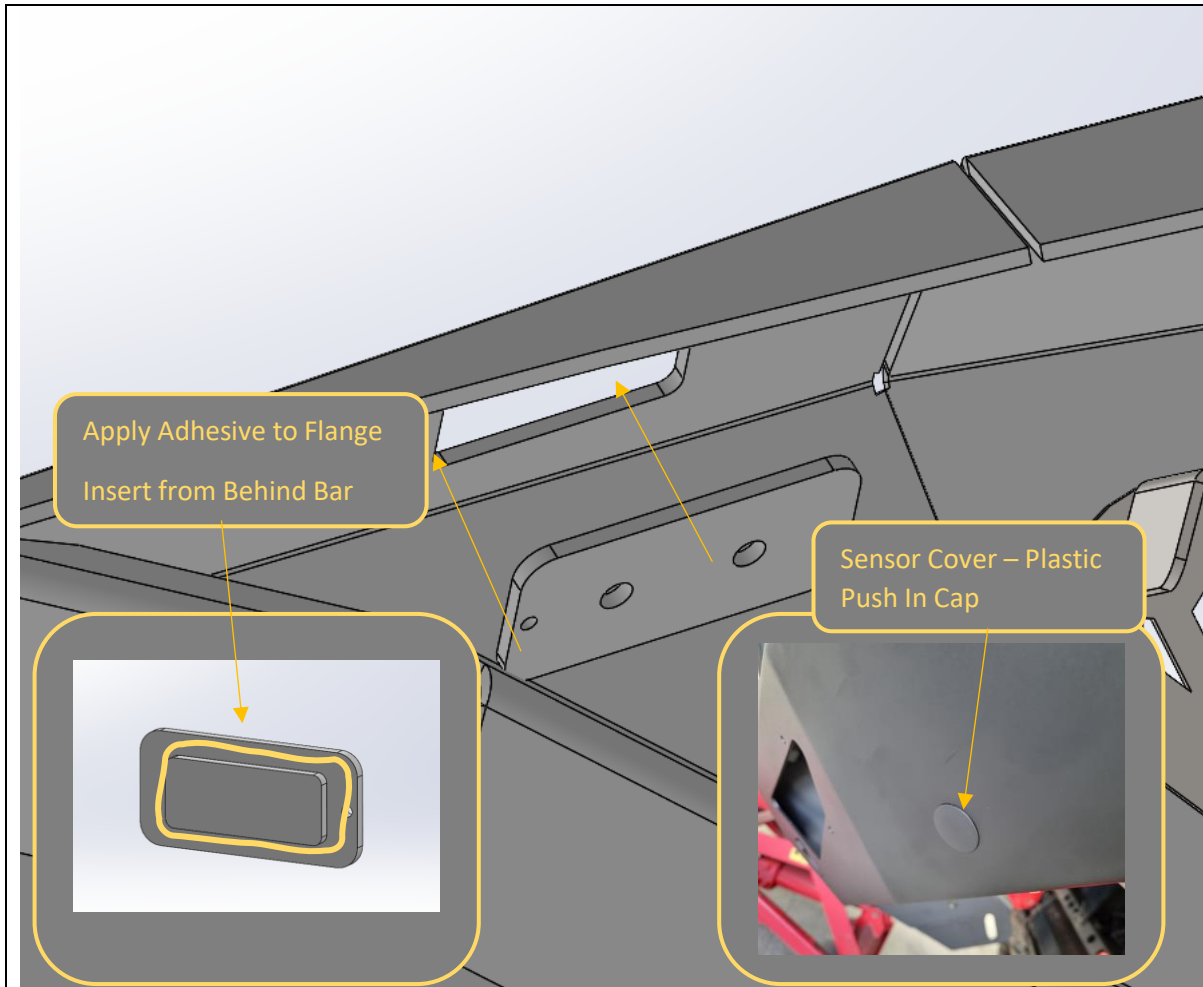
64. Repeat for other side of Bar

TOOLS REQUIRED

Small Flat Bladed Screwdriver

FASTENERS

5x M6 Cage Nut per side



65. If not fitting headlight washers, install supplied plug plates, using Automotive grade adhesive. Tape in place until adhesive sets.

66. Re-fit parking sensors and plastic housings to the holes provided in the bullbar.

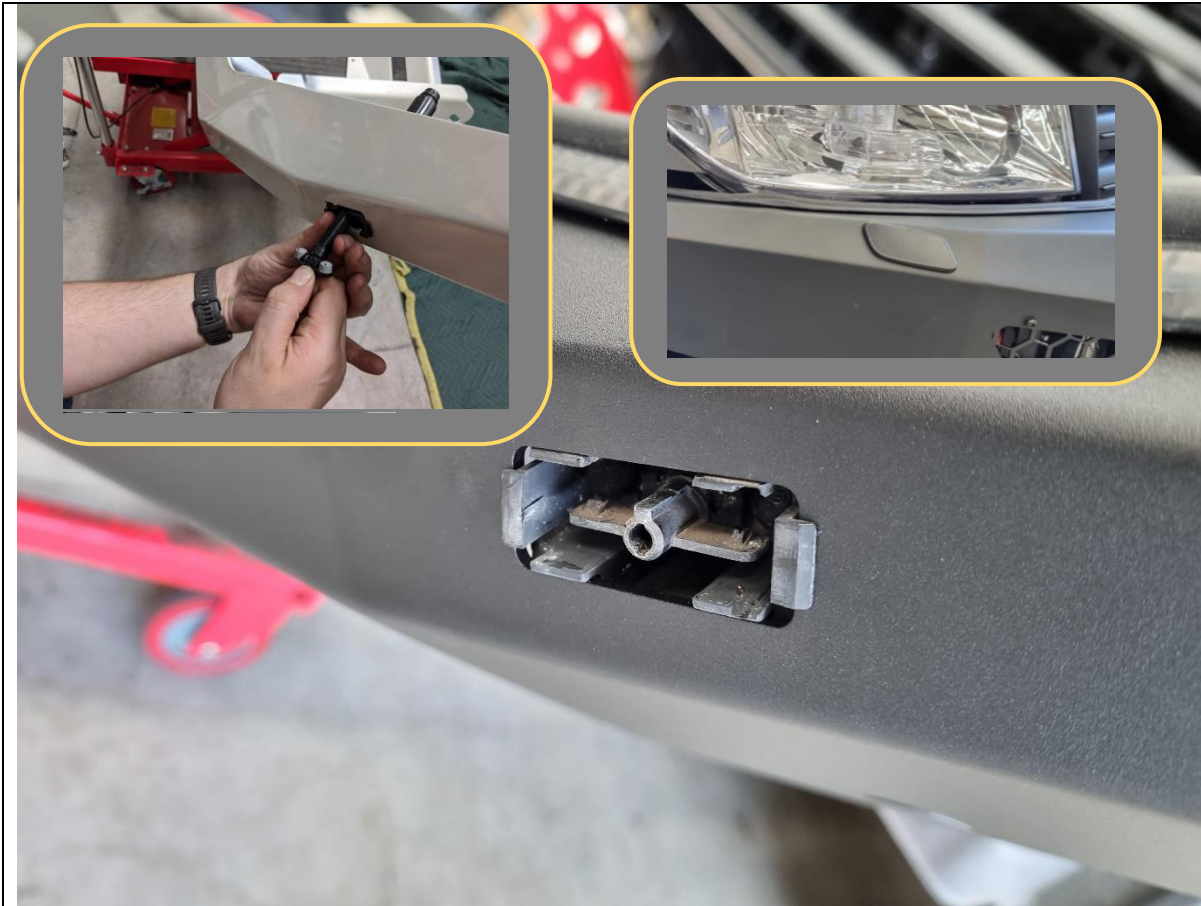
Note: On some models, the sensor size is different, and may require drilling the hole out to 24mm using a step drill. Ensure the drilled hole is deburred and painted to prevent rust.

67. If not fitting parking sensors, install supplied plastic push in caps to parking sensor holes.

TOOLS REQUIRED

Step drill (24mm)
Deburring tool
Rust inhibiting paint

FASTENERS

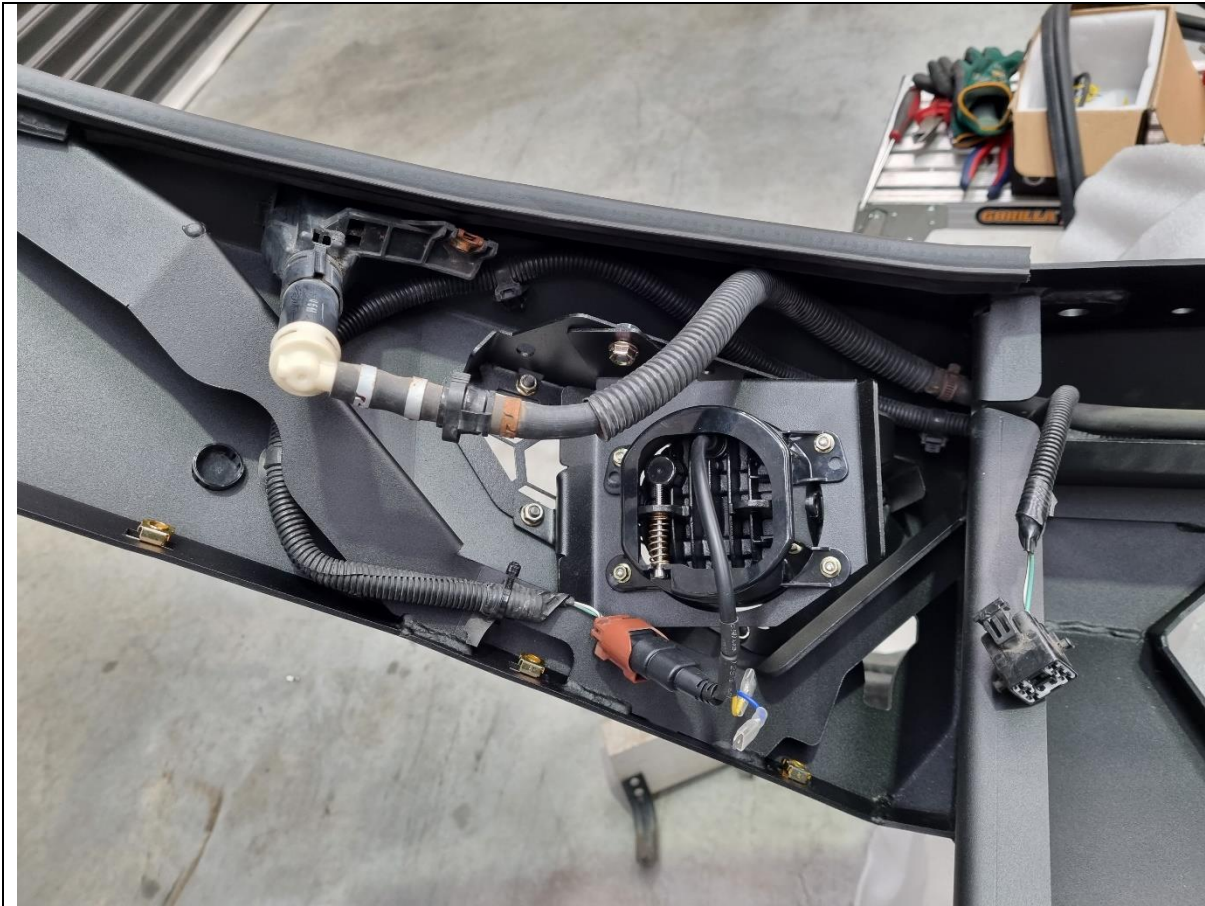


68. If equipped, re-fit headlight washers to bar. Squeeze in the tabs in reverse of removal process to fit.
69. Once fitted, pull out the washer assembly with long nose pliers and adjust the washer nozzles to squirt towards the headlights. Final adjustment can be performed when the bar is fitted to the car.
70. Once aligned re-fit the plastic washer cap to the washer. It is recommended to paint the cap matte black to match the bullbar appearance if the bar is not colour coded.

TOOLS REQUIRED

Long Nose Pliers

FASTENERS



71. If equipped, re-fit parking sensors to the bar. Insert the sensor from the front of the bar. Push the sensor through and allow the tabs to expand and hold the sensor in place.
72. Re-fit electrical harness and headlight washer hose to bar. Secure using cable ties. Ensure the main harness connector has enough length and is located to the inside of the upright.

TOOLS REQUIRED

FASTENERS

Cable Ties



73. Fit Pinch Weld to bar. Position on wings under area where headlights will be.

TOOLS REQUIRED

FASTENERS



74. If fitting an integrated light bar, do so now.

75. The bar is designed to fit the Offroad Animal 22-inch light bar. Secure with M6 Fasteners supplied with the light bar.

76. The bar can accommodate most other "20 inch" size light bars.

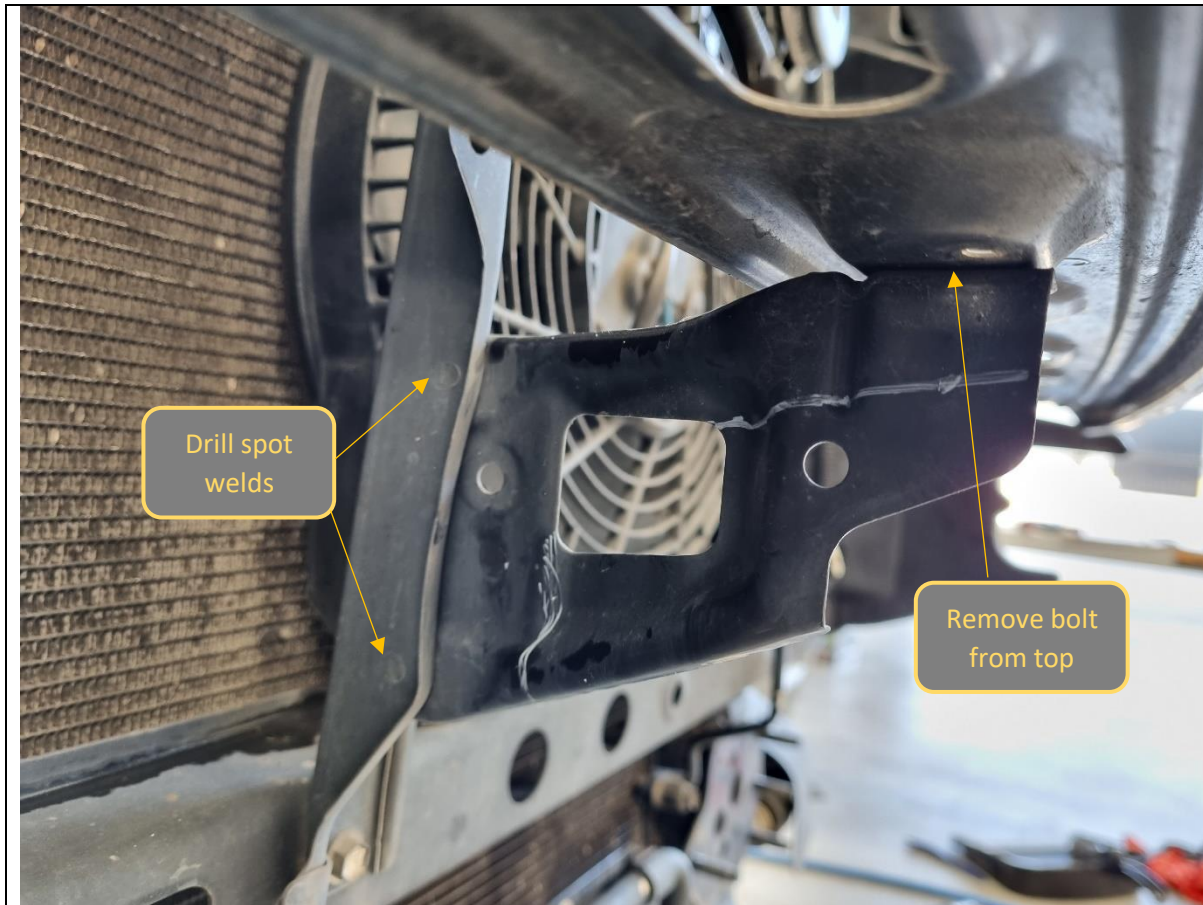
77. Fit the centre pan support brace, using M6x16 Button Head bolts, Flat Washer, and Flange nuts.

TOOLS REQUIRED

4mm hex/Allen key

FASTENERS

5x M6x16 Black Button Head
5x M6 Black Flat Washer
5x M6 Flange Nut



78. If planning to fit a winch with an integrated control box, the small triangular bracket in the center of the grille needs to be removed.
79. Remove the Bolt securing the top of the bracket to the grille support beam.
80. Drill out the 2x Spot welds securing the bracket to the upright.
81. It is also helpful to pre-position the winch on the winch cradle before the bar is fitted to the car.

TOOLS REQUIRED

10mm Socket
8mm Drill Bit
Electric Drill

FASTENERS



82. With assistance, either from another person, or a lifting trolley, lift the bar onto the mounts on the vehicle.

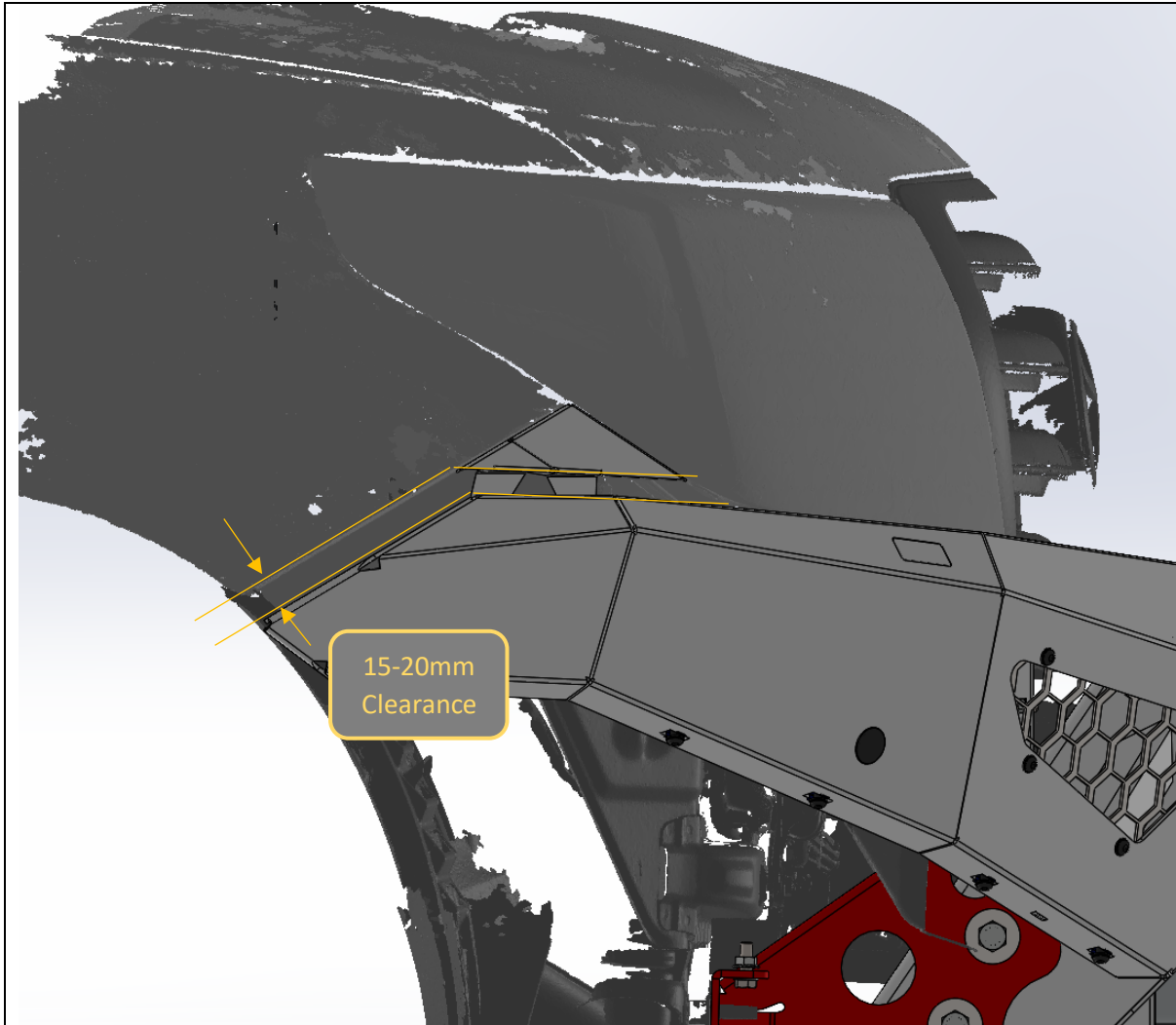
83. Secure with 4x M12x30 Bolts, Heavy Duty washers and M12 Nyloc Nuts per side, Finger tight at this stage.

TOOLS REQUIRED

Lifting Trolley

FASTENERS

8x M12x30 Bolt
10x M12 Heavy Duty Large Washer
2x M12 Nyloc Nut
6x M12 Flange Nut



84. With assistance, from another person, Align the bar with the edges of the vehicle. Adjust such that the clearances are neat and even side to side.

Acceptable range of clearances shown in image above.

85. Once in position tighten the M12 Bolts using socket and spanner. An impact driver may be used to speed up this process.

TOOLS REQUIRED

Lifting Trolley
18/19mm Socket and Spanner

FASTENERS



86. If fitting a winch, do so now.

87. The bar is designed to fit most low mount winches, in foot down configuration. WARN ZEON 10 is largest winch confirmed to fit.

88. As mentioned in previous steps, if fitting winch with top mounted control box, bumper support bracket must be removed.

89. Ensure clutch handle will be accessible through access hole in front mesh panel. Refer to winch instructions regarding changing clutch handle location.

TOOLS REQUIRED

Refer to winch fitting instructions

FASTENERS

Supplied with winch

CAMERA RELOCATION ONLY



90. If relocating the front camera, you will need the optional camera relocation kit, sold separately.
91. Strip the original plastic housing and metal bracket from the camera.
- Retain the 4x tiny Phillips head screws on the back of the camera unit.
92. Fit the camera to the supplied bracket with the 4x screws, as shown.

TOOLS REQUIRED

Small Phillips head screwdriver

FASTENERS

4x factory screws

CAMERA RELOCATION ONLY



93. Insert the camera and relocation bracket through the rear of the opening in the mesh fairlead mount (see inset).
94. Fit the supplied front housing over the front of the camera.
95. Secure the front housing through the mesh fairlead mount and into the relocation bracket with 2x M6x16 black button head bolts, flat washers and flange nuts.

TOOLS REQUIRED

4mm hex/Allen key

FASTENERS

2x M6x16 black button head
2x M6 black flat washer
2x M6 flange nut



96. If required, fit winch fairlead to mesh fairlead mount. Use M10 or 3/8" fasteners supplied with winch. The bar is only compatible with hawse type fairleads.

97. Fit Number plate flip kit to fairlead mount, using fasteners supplied in kit.

TOOLS REQUIRED

FASTENERS

Supplied with winch fairlead



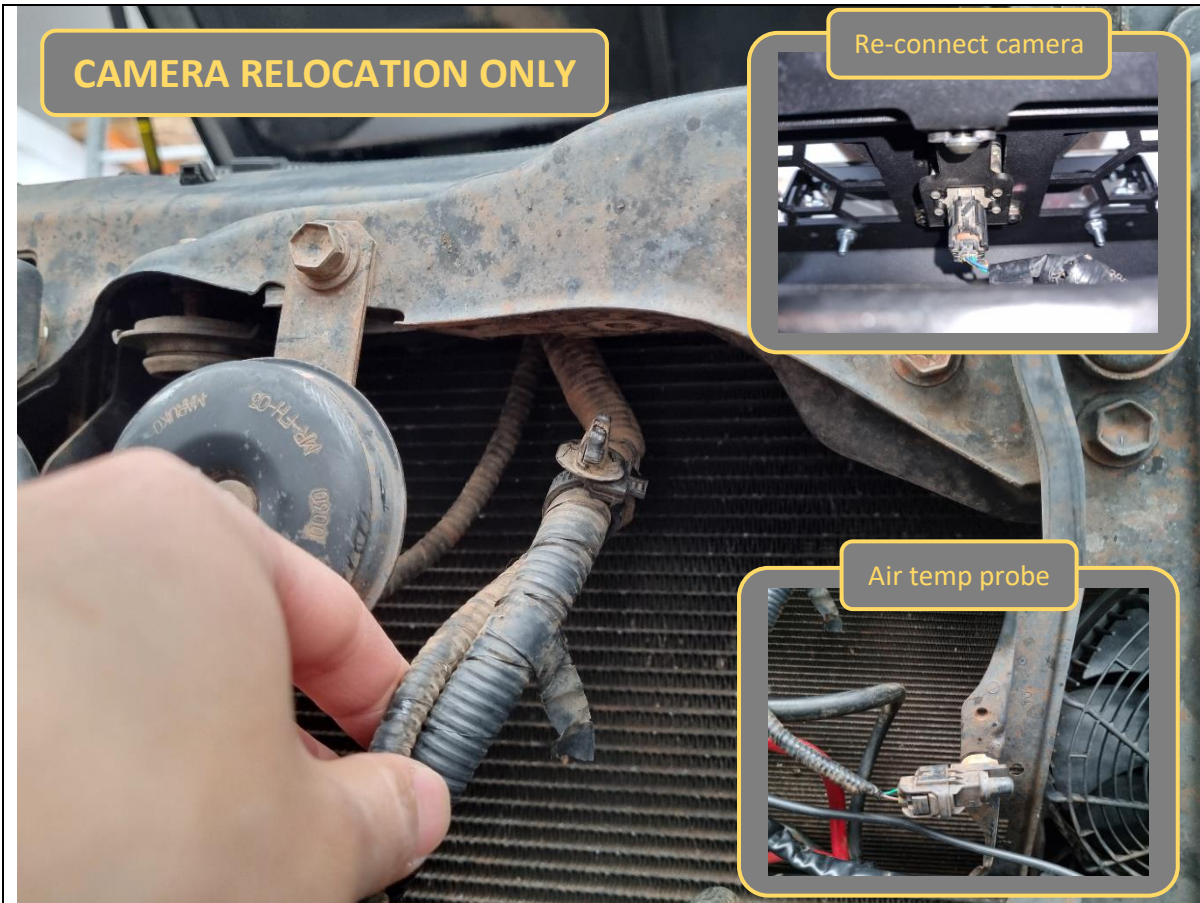
98. Fit the Mesh Fairlead Mount the centre of the bar, using M8x16 Button head (Top), M8x20 Hex (Bottom) M8 Flat washer.
99. Tighten fasteners using 13mm socket / spanner and 5mm Allen Wrench.

TOOLS REQUIRED

13mm Spanner
5mm Allen Wrench

FASTENERS

2x M8x16 Button Head
2x M8x20 Hex Head
4x M8 Flat Washer

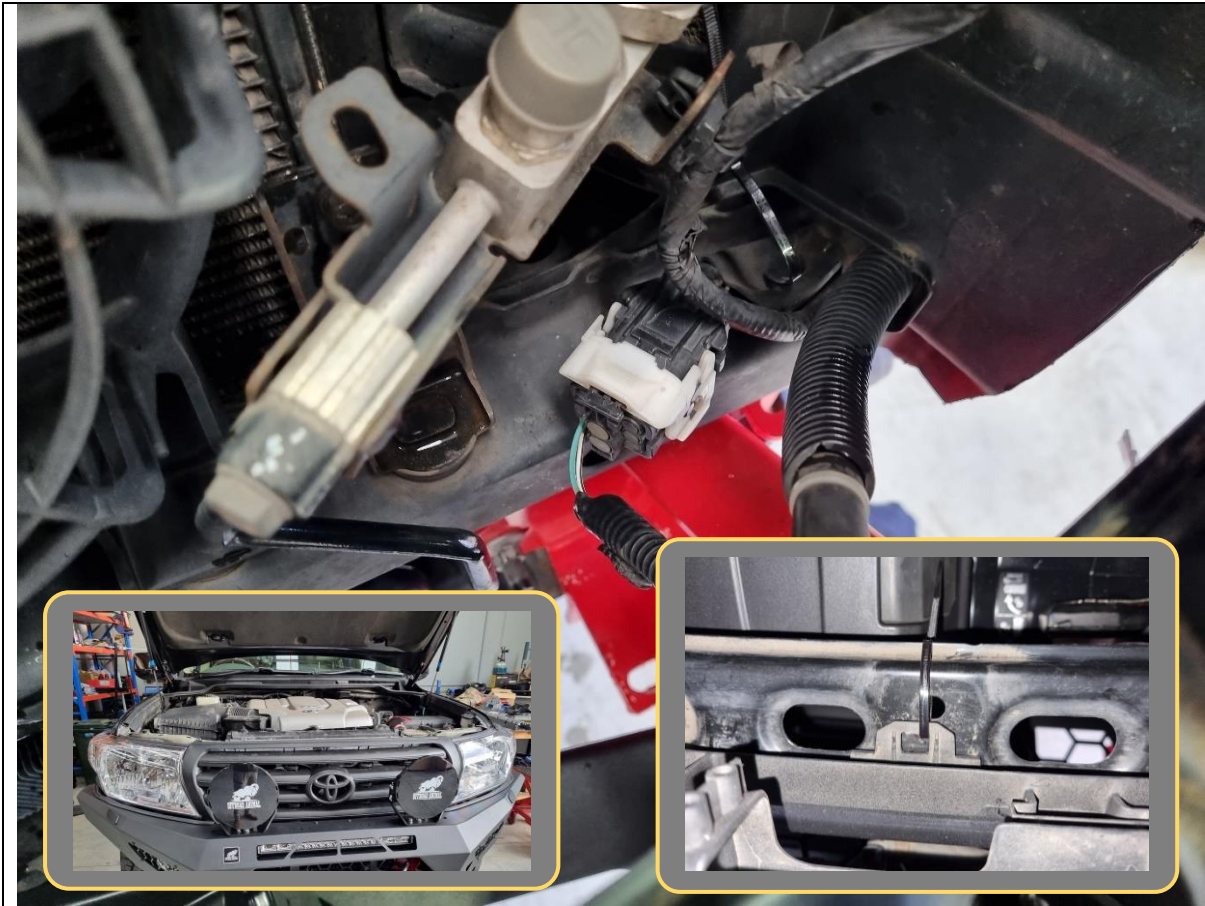


100. If relocating the camera, unclip the loom from the top radiator support member to get more length for the camera harness to reach the camera.
101. Split the camera harness from the main loom corrugated tubing if needed
102. Re-connect the camera harness to the front camera in the mesh fairlead mount.
103. Re-clip in the air temp probe if it was removed while the loom was separated.

TOOLS REQUIRED

Trim removal tool

FASTENERS



104. Re-fit grille to the vehicle. Use original fasteners on top and secure with cable tie through holes on cross beam on bottom.

105. Re-connect electrical harness and headlight washers behind grille.

106. Replace upper radiator cowl using original clips.

TOOLS REQUIRED

10mm Socket / Spanner

FASTENERS

Factory clips (re-use)
Factory Bolts (re-use)
Cable Ties



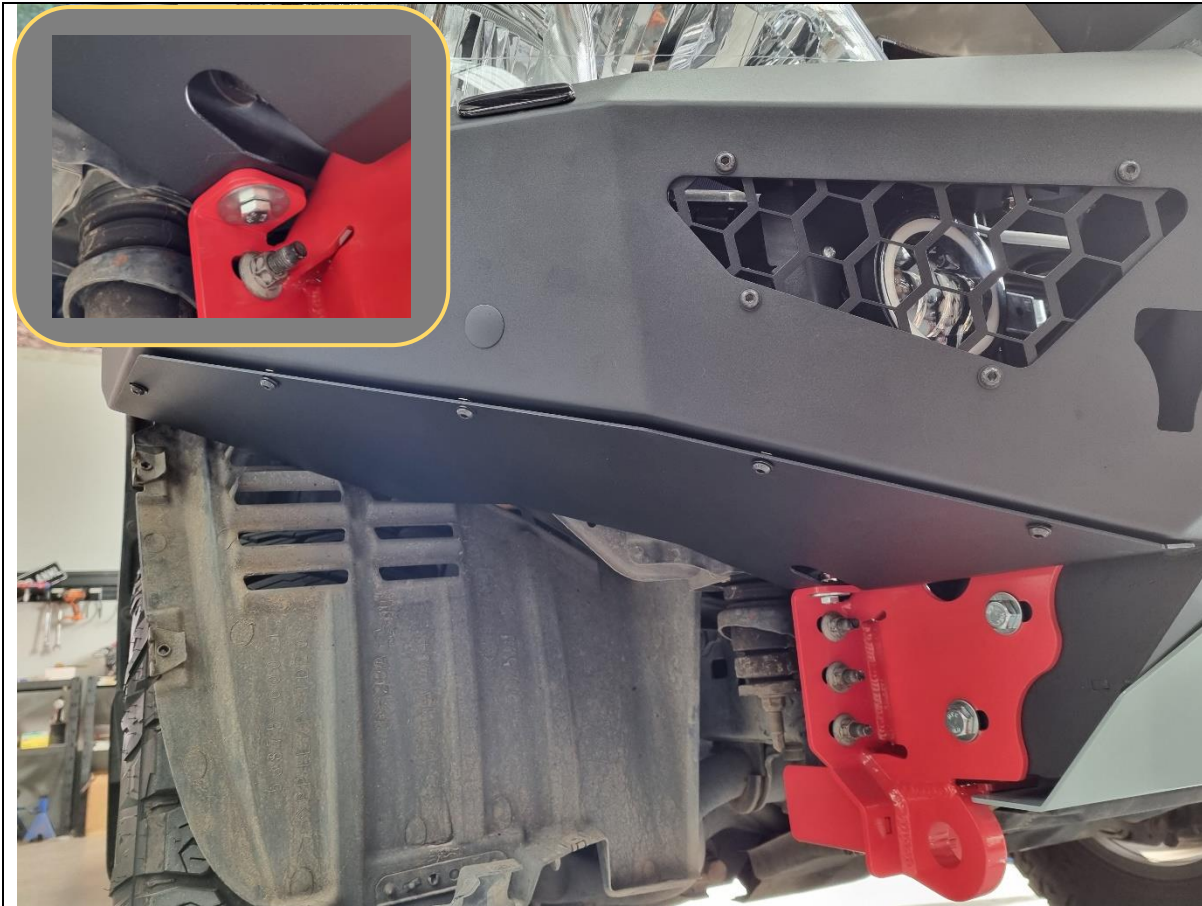
- 107. Fit centre bash plate using 6x M8x20 button head bolts and black flat washer, into the nuts in the bar.
- 108. Secure back of centre bash plate using M10x25 button head, flat washers, and M10 Flange nuts.
- 109. Tighten bottom fasteners using 6mm Allen wrench and 16mm spanner.
- 110. Tighten front fasteners using 13mm socket / spanner and 5mm Allen Wrench.

TOOLS REQUIRED

15mm Spanner
5mm & 6mm Allen Wrench

FASTENERS

2x M10x25 Button Head
2x M10 Flat Washer
2x M10 Flange Nut
6x M8x20 Button Head
6x M8 Flat Washer



111. Fit side underpanels to the underside of the bar using 5x M6x16 button head bolts and flat washers into the cage nuts placed earlier.

112. Tighten with 4mm Allen wrench.

113. Secure back of side under panel on top of the chassis mount and brace (not shown in photo) using 1x M8x25 Hex Bolt, Flat washer and M8 Flange Nut.

114. Leave bolts finger tight at this stage.

115. Repeat for other side.

TOOLS REQUIRED

4mm hex/Allen key
13mm socket/spanner

FASTENERS

10x M6x16 Button Head
10x M6 Flat Washer
2x M8x25 Hex Head
2x M8 Flange Nut
2x M8 Flat Washer

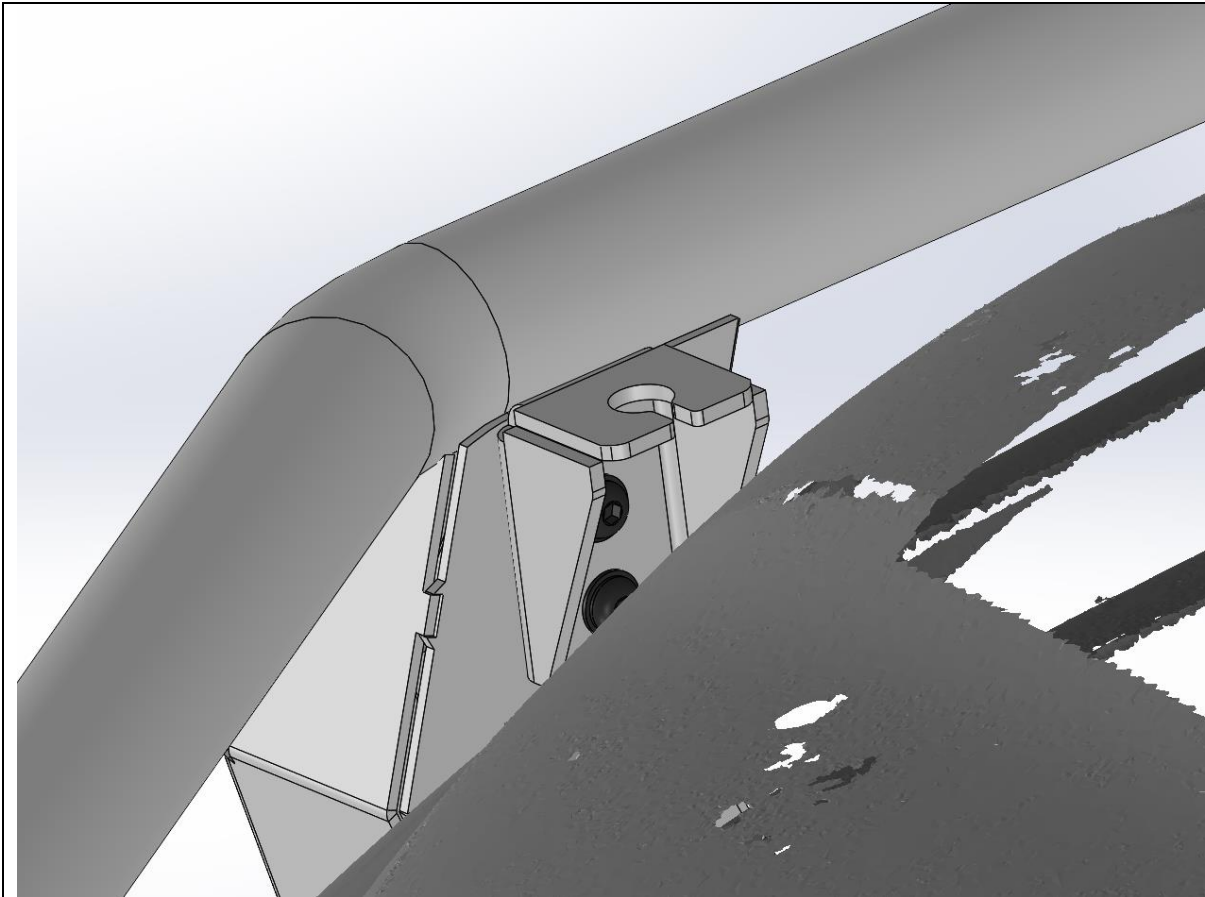


- 116. Using the edge of the under panel as a guide mark the wheel arch liner, approximately 15mm beyond the intersection of the under panel.
- 117. Cut along line as marked using utility knife.
- 118. Tuck the wheel arch liner behind the flange on the under panel.
- 119. Tighten all under panel bolts.
- 120. Complete for other side of vehicle.

TOOLS REQUIRED

- Utility Knife
- 13mm Spanner
- 4mm Allen Wrench

FASTENERS



- 121. **Toro only.** If fitting antenna to Toro bar, fit the antenna brackets to the M8 Threaded inserts in the uprights. Note that brackets are handed.
- 122. **Toro only.** Tighten with 5mm Allen wrench.
- 123. **Toro only.** Fit antenna to the bracket as per antenna manufacturer's instructions.
- 124. **Toro only.** Else fit the 2x M8x25 black button head bolts and black washers to the back of each bullbar upright, to protect nut threads in bar for future use. Retain unused brackets for future use.

TOOLS REQUIRED

5mm Allen Key

FASTENERS

2x M8x20 Button Head Screw
2x M8 Black Flat Washer



125. Fit the Offroad Animal logo plate in the location shown, using the adhesive backing.
126. Fit ADR compliance plate in a visible location. We recommend the underside of the bash plate.
127. Re-Fit number plate to number plate flip.
128. Double check all fasteners are tight, and you are done!

TOOLS REQUIRED

FASTENERS



129. Head Bush and Enjoy your newly protected 200 series!

For contact details see www.offroadanimal.com