

## Toyota Landcruiser 200 Series MY2007-2014 (Pre Facelift) Predator & Toro Front Bar Fitting Instruction

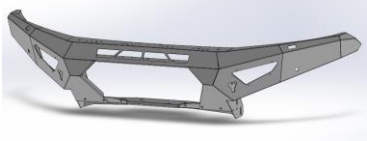
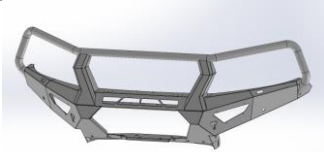
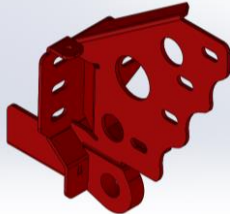
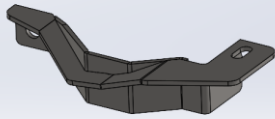
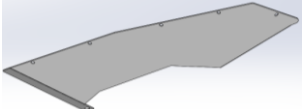
### **IMPORTANT! – READ BEFORE INSTALLATION**

- When installed in accordance with these instructions, the front protection bar does not affect the operation of the vehicles SRS airbags.
- This product must be installed exactly as per these instructions using only hardware supplied.
- Take a few moments to read instructions thoroughly before beginning work.
- In the event of damage to any bar component please contact OFFROAD ANIMAL to arrange repair/replacement of components.
- Do not use this product for any vehicle make or model other than that specified on these instructions.
- Do not remove labels from this product.
- This product and its fixings must not be modified in any way unless stated in these fitting instructions.
- The installation of this product is recommended for trained personnel.
- These instructions are correct at time of publication. OFFROAD ANIMAL cannot be held responsible for the impact of any changes subsequently made by the vehicle manufacturer. If you find something has changed please contact us to let us know!
- During installation it is the duty of the installer to check correct operation/clearances of all components.
- If Instructions are to be printed for reference in the workshop, it is recommended that they are printed in colour, for best legibility.

## PARTS LISTING

**IMPORTANT:** Check all parts are present before beginning work! Contact OFFROAD ANIMAL if something is missing.

### Main Parts – In the Box

Qty	Part Number	Description	Image
1	FB-TLC-200-07-PR-ASM1	LC200 Front Predator Bar Weldment	
<b>Or</b>			
1	FB-TLC-200-07-TOR-ASM1	LC200 Front Torro Bar Weldment	
1	FB-TLC-200-15-PR-ASM2L	LC200 Front Mount - Welded Assembly	
1	FB-TLC-200-15-PR-ASM2R	LC200 Front Mount - Welded Assembly	
1	FB-TLC-200-07-PR-ASM4L	LC200 Impact Brace Assembly	
1	FB-TLC-200-07-PR-ASM4R	LC200 Impact Brace Assembly	
1	U-0011	200 Series Bash Plate	
1	U-0008L	200 SERIES FRONT BAR - SIDE UNDERPANEL	



FB-TLC-200-07-PR-ASM0  
Fitting Instruction

2007-2014 Toyota LC200  
Predator Front Bar

1	U-0008R	200 SERIES FRONT BAR - SIDE UNDERPANEL	
1	FB-TLC-200-07-PR-ASM2	LC200 Pre Facelift Mesh Fairlead Assy	
1	M-0002L	Light Cover Mesh	
1	M-0002R	Light Cover Mesh	
1	B-0910	LC200 PF Pan Brace	
1	B-0911L	LC200 PF Headlight Infill	
1	B-0911R	LC200 PF Headlight Infill	
1	B-0996L	LC200 PF Halo Fog Light Bracket	
1	B-0996R	LC200 PF Halo Fog Light Bracket	
1	NPF-COM-SM-ASM0	Number plate flip asm Small	
2	PWS-TOP-850	Pinch Weld – Top Bulb Seal 850mm	



2	FB-TLC-200-07-PR-ASM3	LC200 Pre Facelift Headlight Washer Infill	
2	CPHP035	Plastic Hole Insert, 22MM, Black, Tigerlink Hardware CPHP029	
1	FB-TLC-200-07-PR-ADRCP	ADR Compliance Plate 200 Series	
1	OFA-LOGO	Offroad Animal Metal Logo	
<b>TORO BAR ONLY</b>			
2	B-0649	Toro Antenna Bracket – 90 Degree Tall	



## Predator Small Parts – Contained in Small Parts Kit Bag

QTY.	PART NO.	DESCRIPTION
8	M4X12 PAN	SCREW, PAN HEAD PHILLIPS, M4X12X0.7 GR4.6 ZP
8	M4 FLANGE NUT	Flange Nut, M4
23	M6x16 BHCS BLACK ZINC	SCREW, BUTTON HEAD CAP, M6X16X1 GR12.9, ISO4042 ZnNi BLACK PASSIVATED FINISH
4	M6x20 BHCS BLACK ZINC	SCREW, BUTTON HEAD CAP, M6X20X1 GR12.9, ISO4042 ZnNi BLACK PASSIVATED FINISH
27	M6 FLAT WASHER BLACK ZINC	M6 Flat Washer, 12x6.1x1, ISO4042 ZnNi BLACK PASSIVATED FINISH
13	M6 FLANGE NUT	Flange Nut, M6x1 G8.8 ZP
10	M6CN3MM	CAGE NUT M6x2.6-3.5
4	M8 X 12 HEX	Bolt Hex, M8X12x1.25, GR8.8 ZP
2	M8 X 20 HEX	Bolt Hex, M8X20x1.25, GR8.8 ZP
2	M8 X 25 HEX	Bolt Hex, M8X25x1.25, GR8.8 ZP
2	M8 X 16 BHCS BZP	SCREW, BUTTON HEAD CAP, M8X16X1.25 GR12.9, ISO4042 ZnNi BLACK PASSIVATED FINISH
6	M8 X 20 BHCS BLACK ZINC	SCREW, BUTTON HEAD CAP, M8X20X1.25, ISO4042 ZnNi BLACK PASSIVATED FINISH
6	M8 FLAT WASHER	M8 FW
2	M8 HD FLAT WASHER	M8 FLAT WASHER - High Tensile 19x8x1.9mm
8	M8 FLAT WASHER- BLACK ZINC	M8 FLAT WASHER, 16.5x8.4x1.2, ISO4042 ZnNi BLACK PASSIVATED FINISH
6	M8 FLANGE NUT	Flange Nut, M8x1.25 G8.8 ZP
2	M10X25 BHCS	SCREW, BUTTON HEAD CAP, M10X25X1.5 GR12.9 ZP
2	M10 Flat Washer	M10 FW
2	M10 FLANGE NUT	Flange Nut, M10x1.5 G8.8 ZP
8	M12X30	Bolt Hex, M12X30x1.75, GR8.8 ZP
8	M12 FW LHD	M12 FW Large Heavy Duty
6	M12 FLANGE NUT	Flange Nut, M12x1.75 G8.8 ZP
2	M12 Nyloc nut	M12 NYLOC NUT
2	M12 FLAT WASHER	M12 FW
2	M12X100	Bolt Hex, M12X100x1.75, GR8.8 ZP
2	T-0086	Toyota LC200 Impact Brace Crush Tube
2	NP-COM-M12-30-ASM0	M12 NUT PLATE SHORT, 30MM STEM



## Toro Small Parts Kit – Contained in Small Parts Kit Bag

QTY.	PART NO.	DESCRIPTION
8	M4X12 PAN	SCREW, PAN HEAD PHILLIPS, M4X12X0.7 GR4.6 ZP
8	M4 FLANGE NUT	Flange Nut, M4
23	M6x16 BHCS BLACK ZINC	SCREW, BUTTON HEAD CAP, M6X16X1 GR12.9, ISO4042 ZnNi BLACK PASSIVATED FINISH
4	M6x20 BHCS BLACK ZINC	SCREW, BUTTON HEAD CAP, M6X20X1 GR12.9, ISO4042 ZnNi BLACK PASSIVATED FINISH
27	M6 FLAT WASHER BLACK ZINC	M6 Flat Washer, 12x6.1x1, ISO4042 ZnNi BLACK PASSIVATED FINISH
16	M6 FLANGE NUT	Flange Nut, M6x1 G8.8 ZP
10	M6CN3MM	CAGE NUT M6x2.6-3.5
4	M8 X 12 HEX	Bolt Hex, M8X12x1.25, GR8.8 ZP
2	M8 X 20 HEX	Bolt Hex, M8X20x1.25, GR8.8 ZP
2	M8 X 25 HEX	Bolt Hex, M8X25x1.25, GR8.8 ZP
2	M8 X 16 BHCS BZP	SCREW, BUTTON HEAD CAP, M8X16X1.25 GR12.9, ISO4042 ZnNi BLACK PASSIVATED FINISH
10	M8 X 20 BHCS BLACK ZINC	SCREW, BUTTON HEAD CAP, M8X20X1.25, ISO4042 ZnNi BLACK PASSIVATED FINISH
6	M8 FLAT WASHER	M8 FW
2	M8 HD FLAT WASHER	M8 FLAT WASHER - High Tensile 19x8x1.9mm
12	M8 FLAT WASHER- BLACK ZINC	M8 FLAT WASHER, 16.5x8.4x1.2, ISO4042 ZnNi BLACK PASSIVATED FINISH
6	M8 FLANGE NUT	Flange Nut, M8x1.25 G8.8 ZP
2	M10X25 BHCS	SCREW, BUTTON HEAD CAP, M10X25X1.5 GR12.9 ZP
2	M10 Flat Washer	M10 FW
2	M10 FLANGE NUT	Flange Nut, M10x1.5 G8.8 ZP
8	M12X30	Bolt Hex, M12X30x1.75, GR8.8 ZP
8	M12 FW LHD	M12 FW Large Heavy Duty
6	M12 FLANGE NUT	Flange Nut, M12x1.75 G8.8 ZP
2	M12 Nyloc nut	M12 NYLOC NUT
2	M12 FLAT WASHER	M12 FW
2	M12X100	Bolt Hex, M12X100x1.75, GR8.8 ZP
2	T-0086	Toyota LC200 Impact Brace Crush Tube
2	NP-COM-M12-30-ASM0	M12 NUT PLATE SHORT, 30MM STEM



## TOOLS REQUIRED

The following tools will be required to install the product.

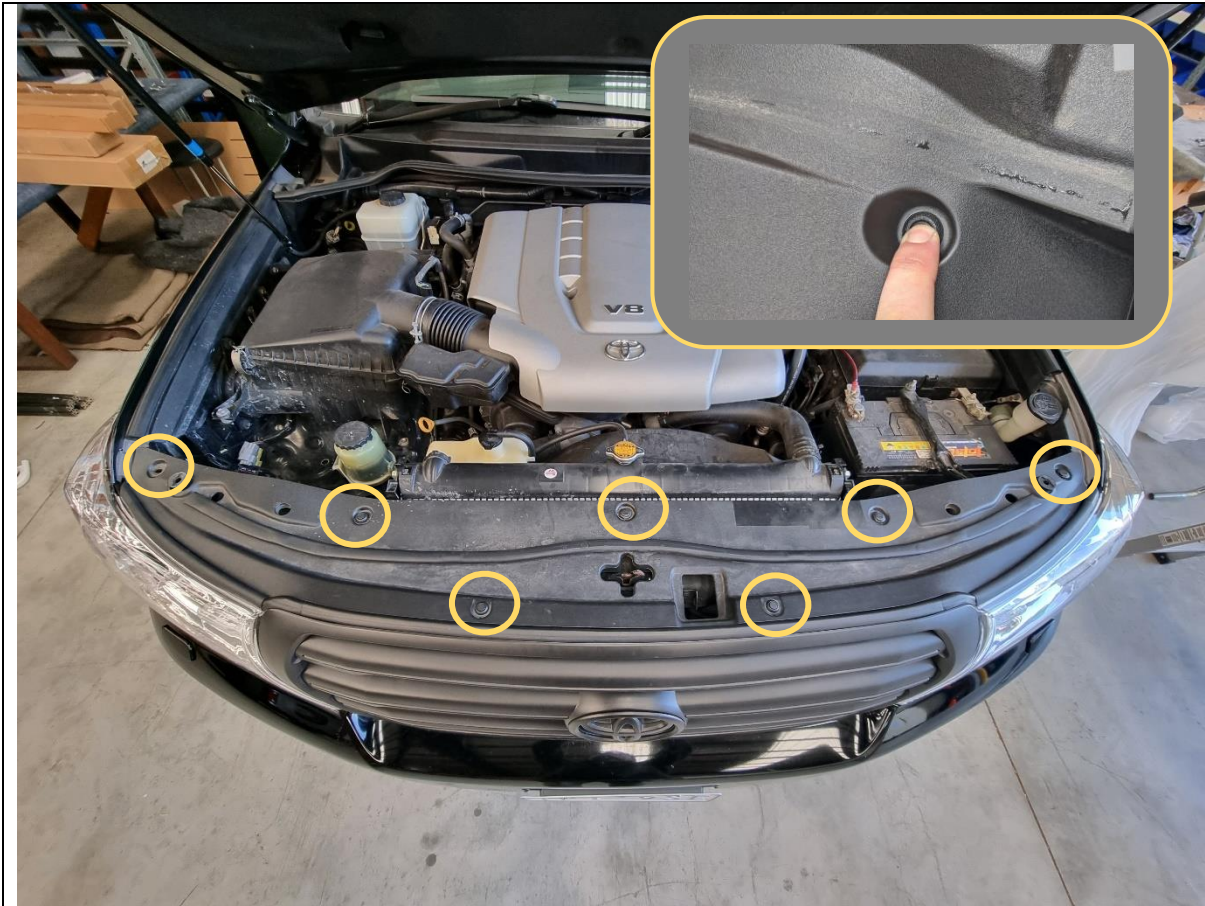
<b>Hand Tools</b>	<b>Power Tools</b>	<b>Workshop Supplies</b>
Metric Socket Set 8-19mm Socket Extension Bar Metric Spanner Set 10-19mm Torx Drivers T25-T30 Hex (Allen) Key Set 4-6mm Trim Puller Tool Flat Blade Screwdriver set Phillips Head Screwdriver set Utility Knife Side Cutters Pliers	Electric Drill 6mm Drill Bit  Air Hacksaw or Angle Grinder  Electric/Air Impact Driver (Optional)	Double Sided Adhesive Tape Panel Stand or Soft Blanket Cable Ties Masking Tape Black Automotive paint Scotch Brite or Fine Sandpaper Automotive Sealant/Adhesive Bucket Hose Clamp

## WORKSHOP SAFETY

It is the responsibility of the installer to always complete works in a safe manner. Make sure the following safety equipment is available and precautions are observed whilst fitting this product.

<p>Hearing Protection</p> 	<p>Always wear ear protection when using power tools.</p>
<p>Eye Protection</p> 	<p>Ensure eye protection is always worn when cutting or drilling.</p>
<p>Manual Handling</p> 	<p>Do not attempt to lift bar assemblies or rock sliders on your own.</p> <p>Always use two people to lift or use mechanical Lifting aid such as hydraulic lifting trolley.</p>
<p>Vehicle Support</p> 	<p>Always ensure vehicle is properly supported when working on it. Do not attempt to fit products whilst suspension work is being carried out. Do not work under a vehicle supported only by a jack.</p>





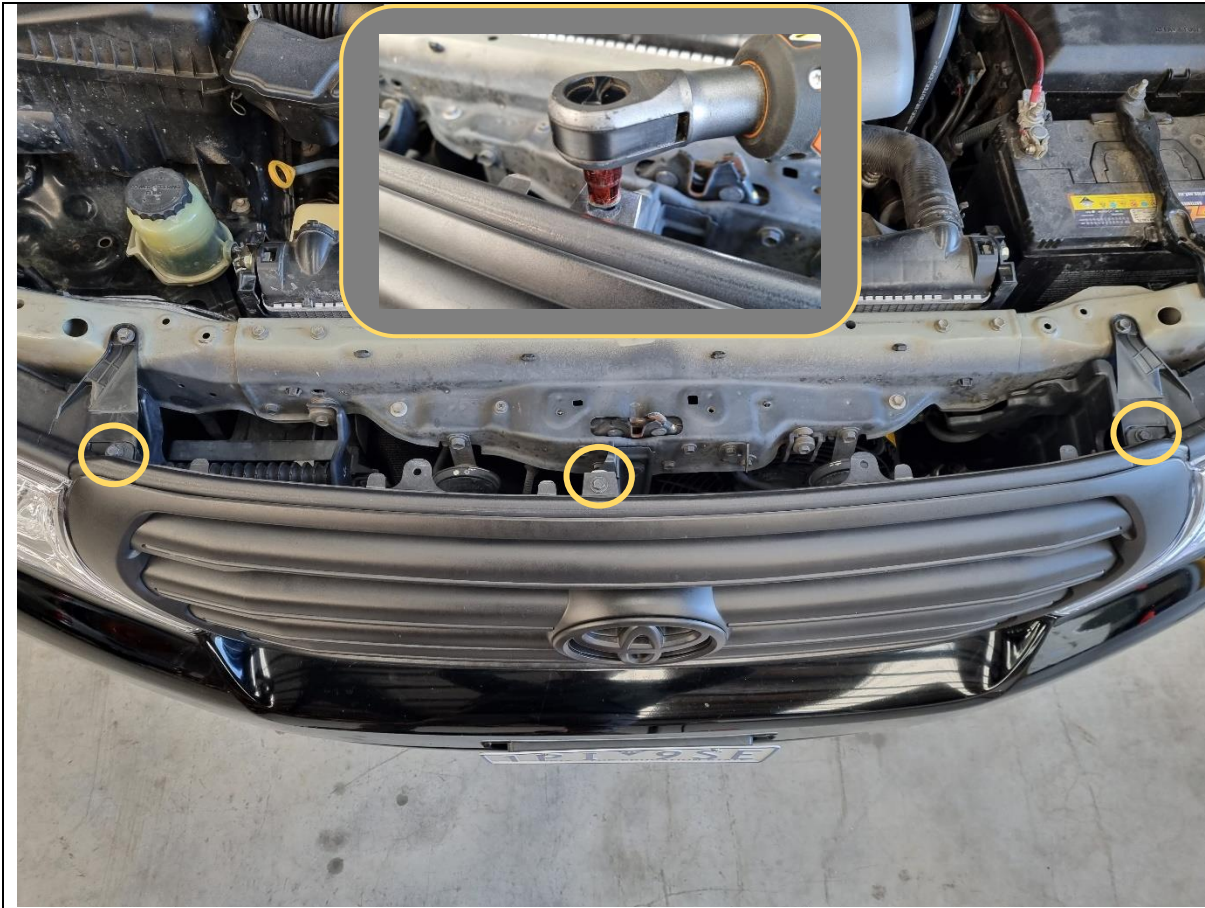
1. Open the bonnet.
2. Remove clips securing the top radiator cowling. Press down on the centre button of clip to unlock, then remove clip with trim tool.
3. Retain all clips for reassembly.

**TOOLS REQUIRED**

Trim Tool

**FASTENERS**

Retain Factory



4. Remove the 3x Bolts securing top grille to body using 10mm socket.

**TOOLS REQUIRED**

10mm socket

**FASTENERS**

Retain Factory

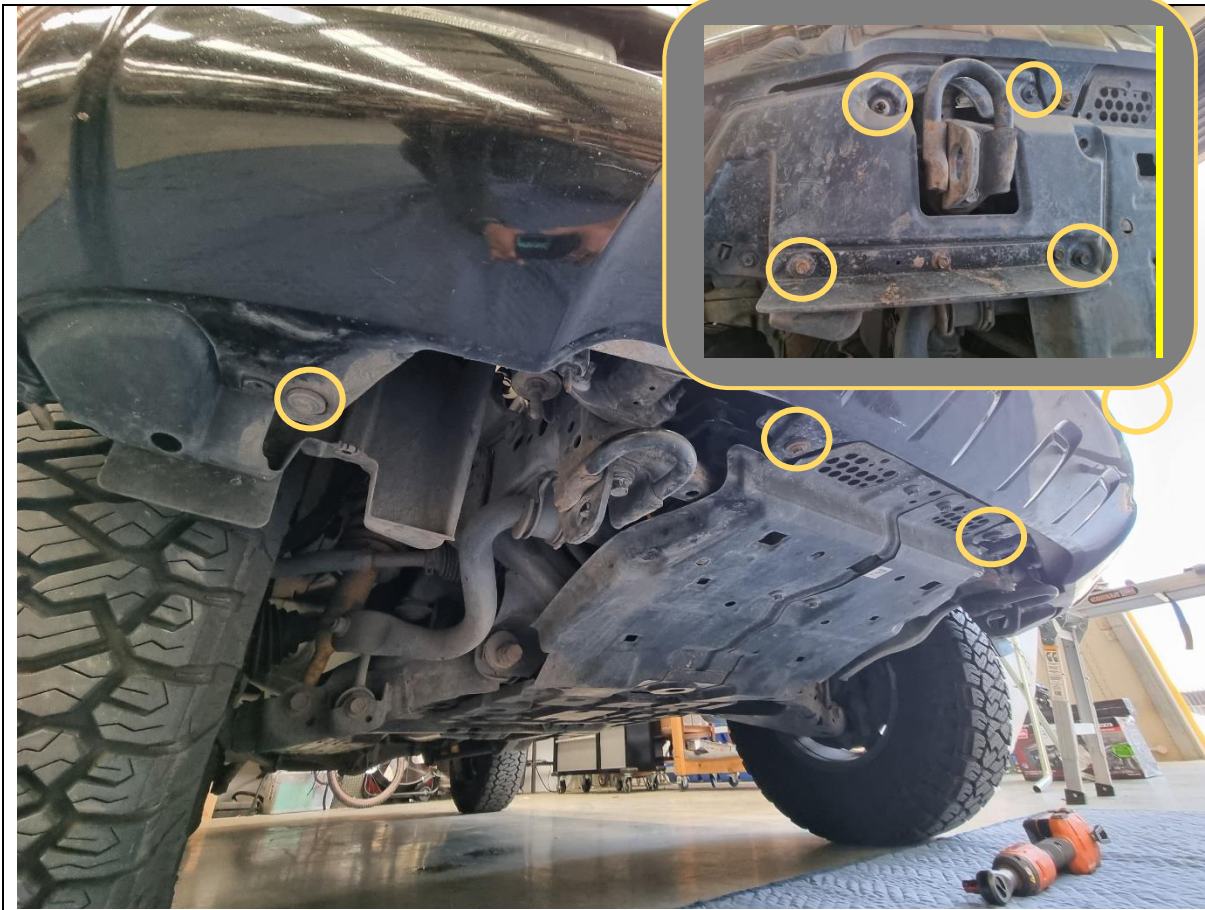


5. Behind the grille release the 4x clips securing the bumper to the cross beam.

**TOOLS REQUIRED**

Trim Tool

**FASTENERS**



6. Remove the shrouds surrounding the tow point by removing the 10mm head screws and plastic nut securing the shroud.
7. Remove 10mm head screws securing the bottom edge of the bumper to the vehicle.

**TOOLS REQUIRED**

10mm socket

**FASTENERS**

Factory Bolts (Discard)



8. Remove the T30 Torx screws securing bumper to the wheel arch liner.

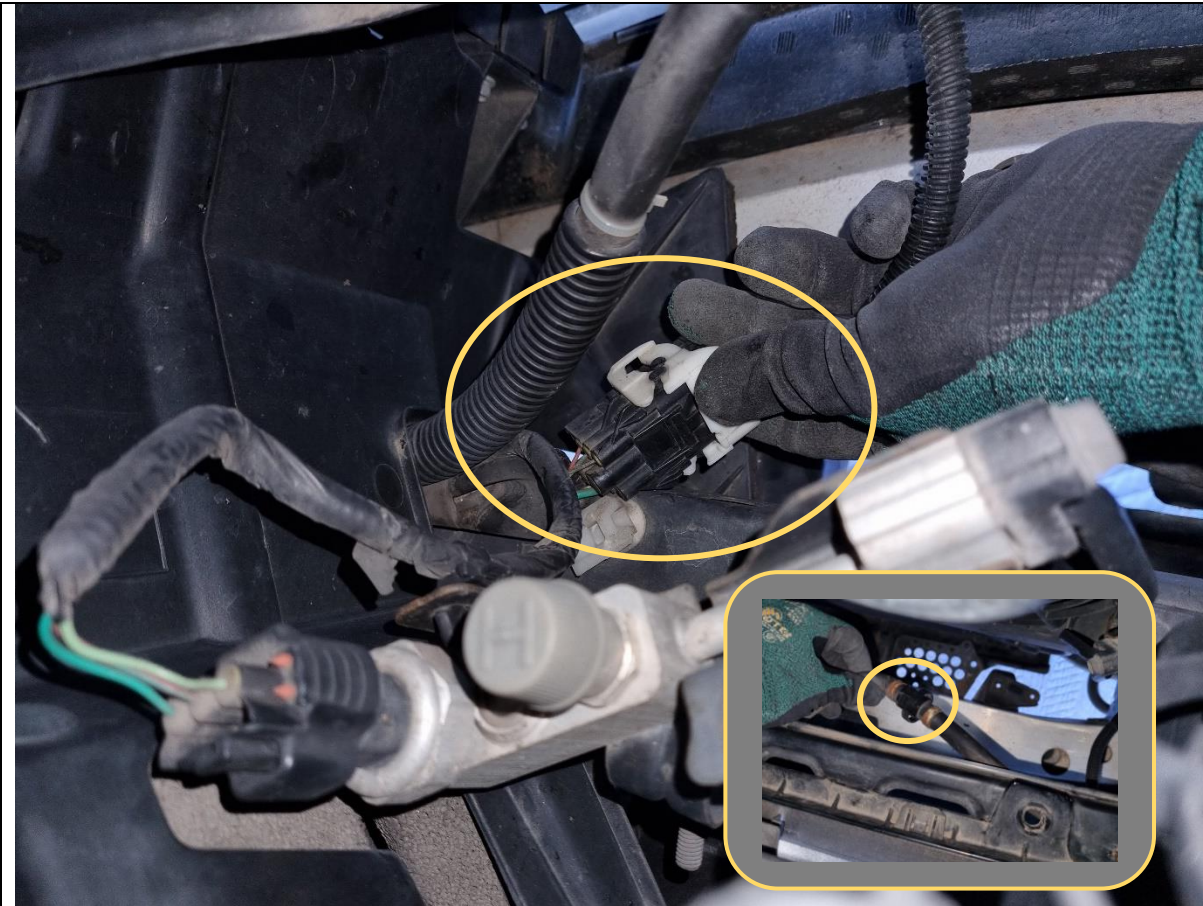
9. Complete on both sides of the vehicles

**TOOLS REQUIRED**

T30 Torx Driver

**FASTENERS**

Factory Torx Screws (Discard)



10. Disconnect the main electrical harness, located on the LHS of vehicle near bottom of grille.

11. For vehicles equipped with headlight washers, disconnect the headlight washer hose at the quick connect fitting.

If there is any washer fluid in the reservoir it will spill out. Have a bucket on hand to drain the washer fluid or use a hose clamp to prevent the fluid from leaking

12. For vehicles equipped with a front camera, disconnect the electrical harness connector located on the back of the grille.

**TOOLS REQUIRED**  
Bucket or Hose Clamp

**FASTENERS**



13. Starting from the wheel arch, carefully pull the bumper away from the body of the vehicle to release the clips.
14. Once all clips are released, carefully lift the bumper from the car and set aside on a soft surface.

**TOOLS REQUIRED**

**FASTENERS**



15. Remove the grille from the bumper by pinching and pushing forward the clips securing the bottom edge of grille to bumper.

**TOOLS REQUIRED**

**FASTENERS**





16. Disconnect the Fog light harness from the fog light.
17. Remove both the electrical harness, and headlight washer pipes from the bar, by prying out the clips using trim tool.
18. Complete on both sides of bumper.

**TOOLS REQUIRED**

Phillips head Screwdriver  
Trim tool

**FASTENERS**

Discard Factory Screws



19. Disconnect the parking sensors from the loom by first prying open the plastic housing, then disconnecting the multi plug connector.
20. Squeeze the small retaining tabs on the sensor housing whilst pushing the sensor forward, through the bumper. The tabs should release and allow the sensor to be removed from the front of the bumper as shown.

**TOOLS REQUIRED**

**FASTENERS**

<ol style="list-style-type: none"> <li>21. If vehicle is equipped, remove headlight washers from the bumper. Start by disconnecting the supply hose.</li> <li>22. Pull out washer head and unclip the cap.</li> <li>23. Unscrew the Bolt securing to bumper with 10mm socket.</li> <li>24. Squeeze the retaining tabs together and push through bumper to release.</li> </ol>	<p><b>TOOLS REQUIRED</b></p> <p>10mm Socket / Spanner</p> <hr/> <p><b>FASTENERS</b></p>



25. Remove the plastic bumper retainers by removing the screws, then prying out the large clip from behind using trim tool

**TOOLS REQUIRED**

10mm socket or  
Phillips head screwdriver  
Trim Tool

**FASTENERS**

Phillips Head screw.



26. On vehicles with light color paint, It is recommended to paint the under headlight areas that will be visible through bar clearance gaps and mesh panels.

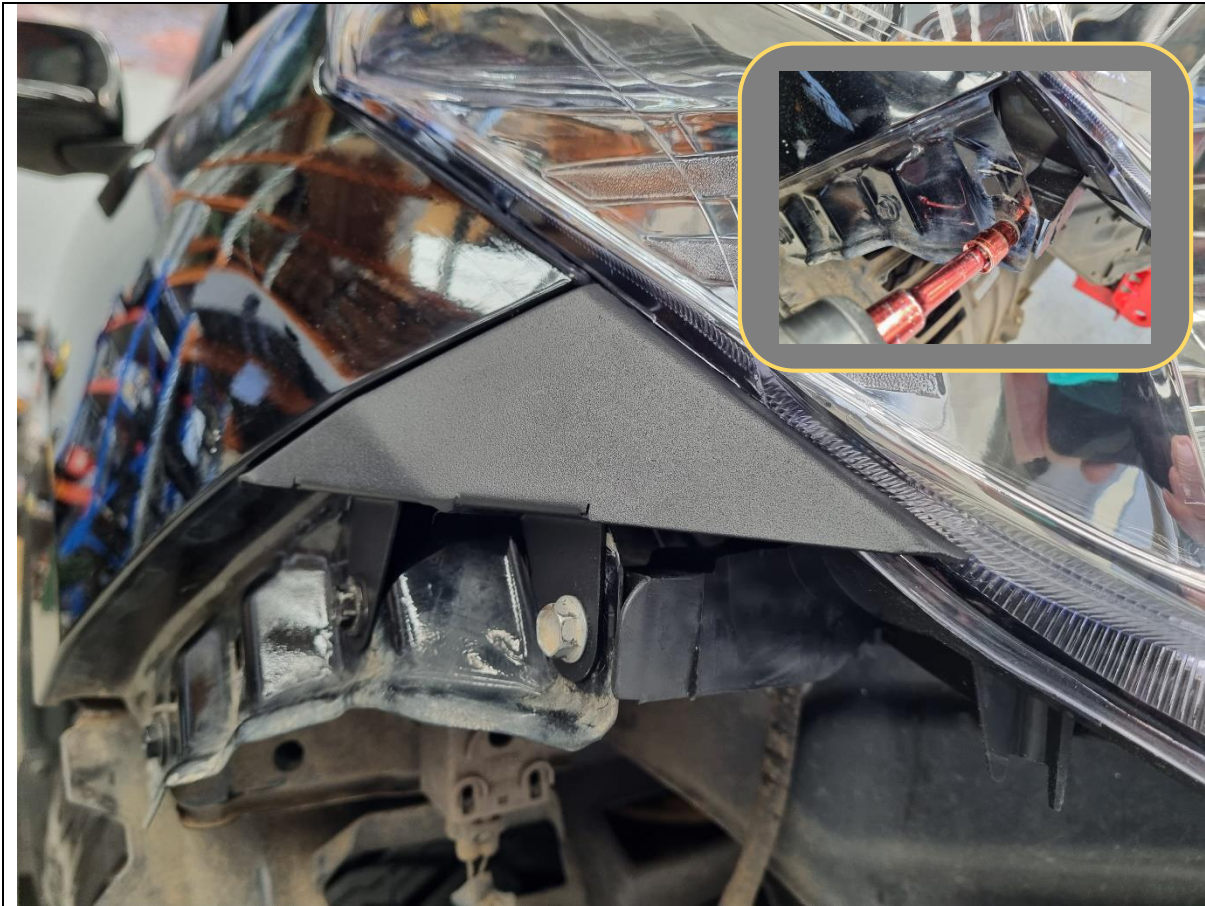
27. Mask off headlight and panel using masking tape as shown.

28. Paint area using Matte black automotive grade paint.

**TOOLS REQUIRED**

Masking Tape  
Black Automotive Paint

**FASTENERS**



29. Remove the factory M6 Bolts securing the headlight and fender immediately behind the plastic bumper retainer.
30. Fit the headlight infill panel, using new supplied M6x20 Black Button Head Bolts, and Black Washers
31. Complete for both sides of vehicle.

**TOOLS REQUIRED**

10mm Socket  
4MM hex Key

**FASTENERS**

2x M6x20 Black Button Head Bolts  
2x M6 Black Flat Washer  
Per Side



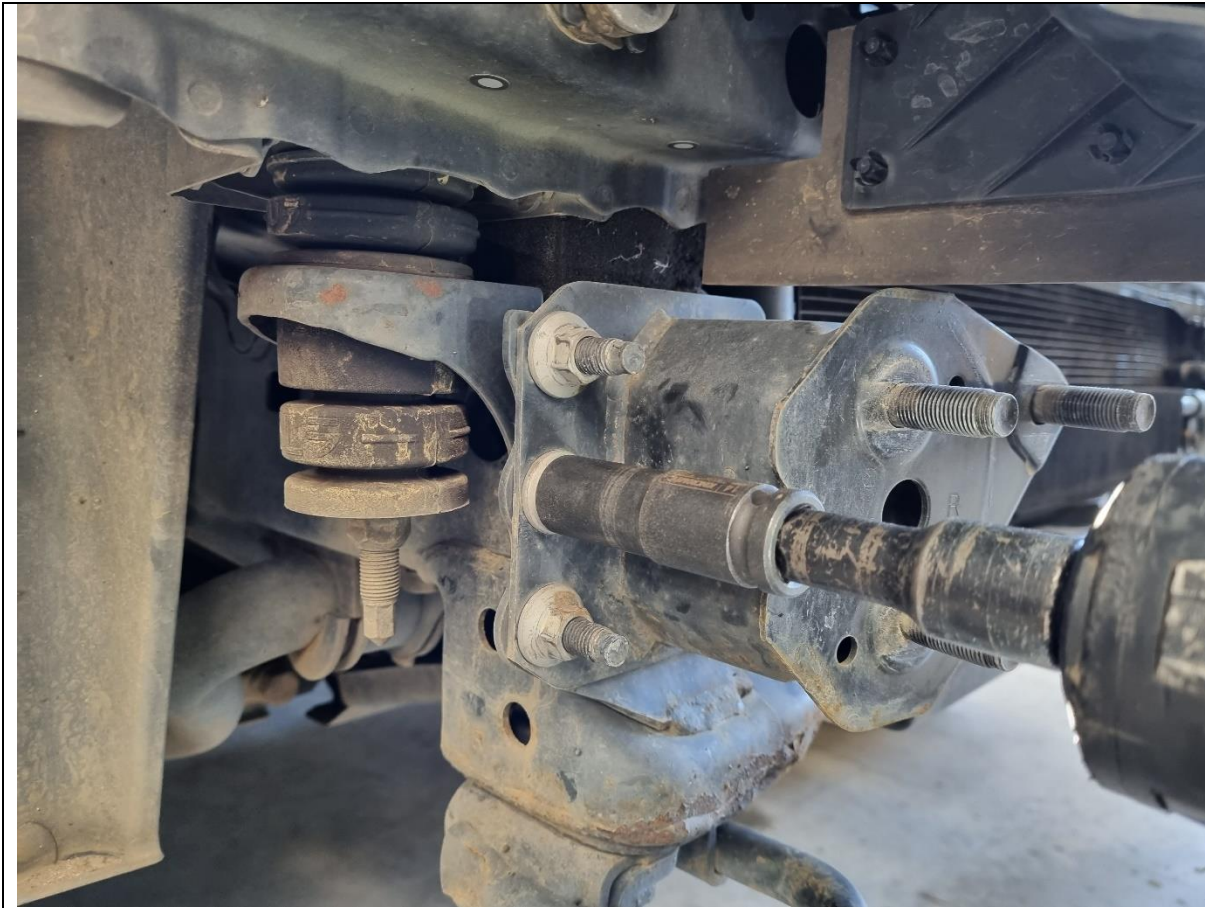
32. Remove the foam covering the impact beam assembly by lifting it off.
33. Remove the 6x 14mm head bolts holding the impact beam to the impact beam brackets.
34. Remove and set aside the aluminum impact beam.

**TOOLS REQUIRED**

14mm Socket  
Extension Bar

**FASTENERS**

6x 14mm Head factory bolts



35. Remove Steel impact beam mounts by removing the 5x 14mm head flange nuts on each side.

36. Retain nuts for fitment of bulbar mounts.

**TOOLS REQUIRED**

14mm Spanner / Socket

**FASTENERS**

14mm Head Factory Flange Nuts





37. Remove the Factory tow point, by removing the 17mm head factory bolts.

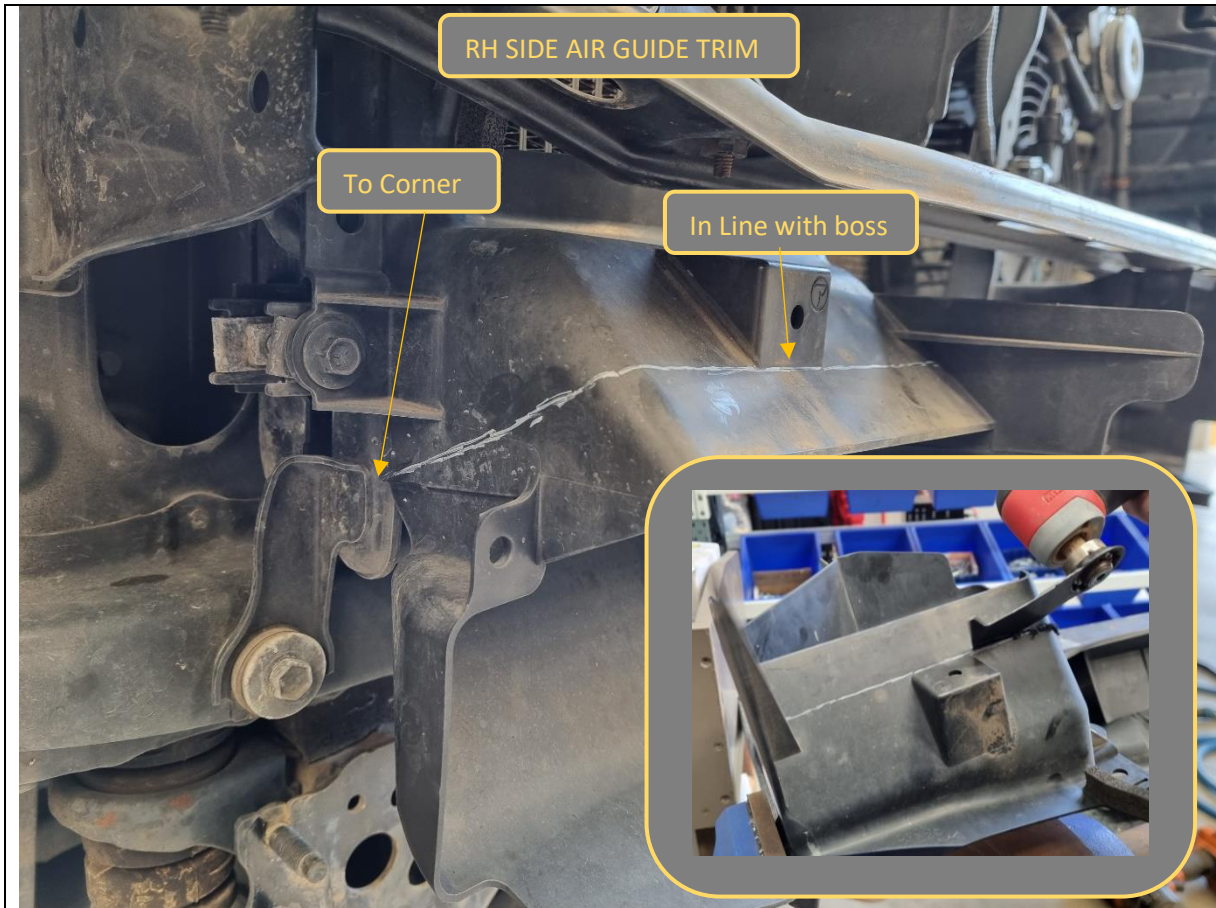
38. Retain bolts for fitment of bulbar mounts.

**TOOLS REQUIRED**

17mm Socket

**FASTENERS**

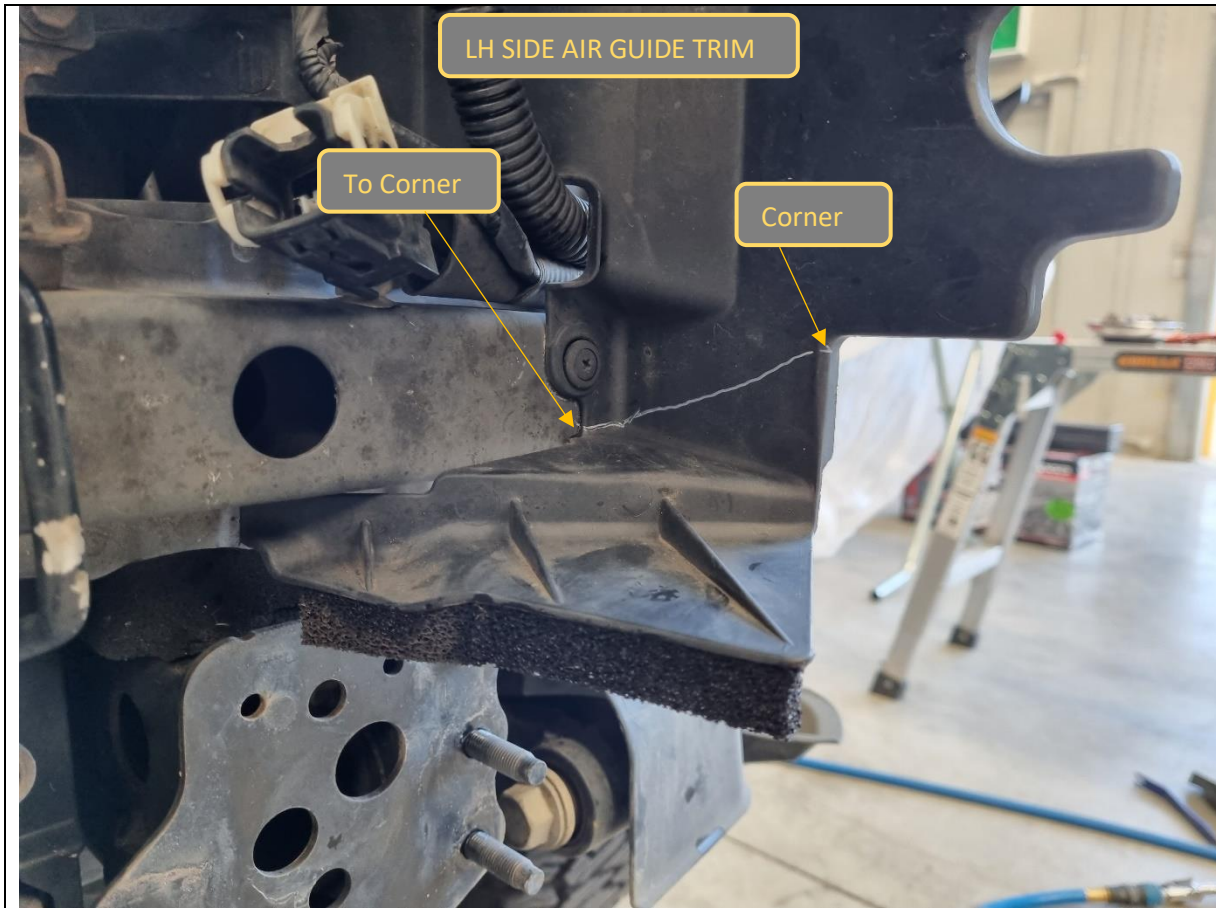
17mm Head Factory Bolts



39. Plastic air guides need to be trimmed to allow clearance for the bulbar mounts.
40. For RH Side, using a sharp utility knife or an air hacksaw, cut along the corners as shown in the image.
41. It can be easier to remove guide by removing the 4x Bolts securing the guide to the cooler and perform the cut in a vice.
42. See next step for LH Side.

**TOOLS REQUIRED**  
Utility knife,  
Air Hacksaw  
or  
Oscillating Multi tool

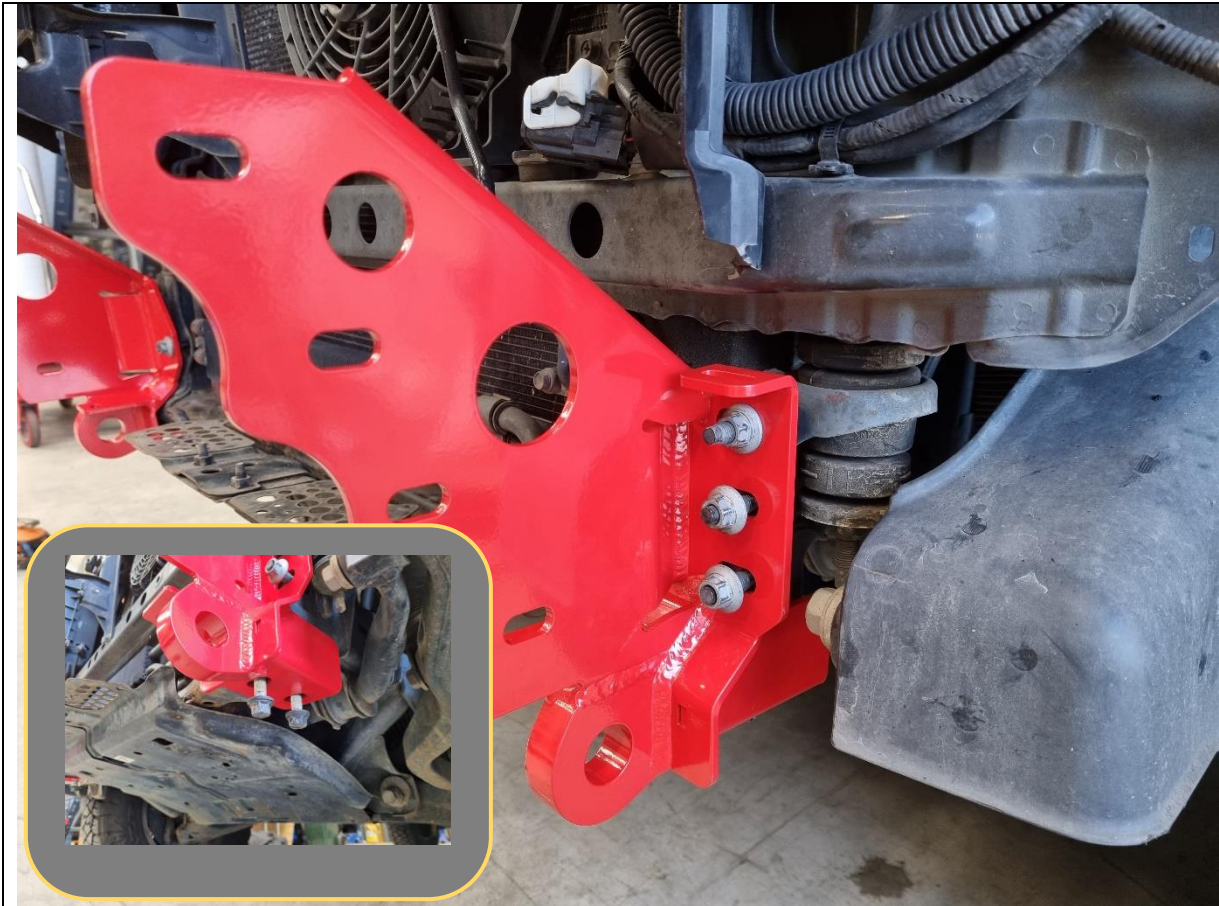
**FASTENERS**



43. For LH Side, using a sharp utility knife or an air hacksaw, cut along the corners as shown in the image.
44. It is not necessary to remove the air guide for LH side trim.

**TOOLS REQUIRED**  
Utility knife,  
Air Hacksaw  
or  
Oscillating Multi tool

**FASTENERS**



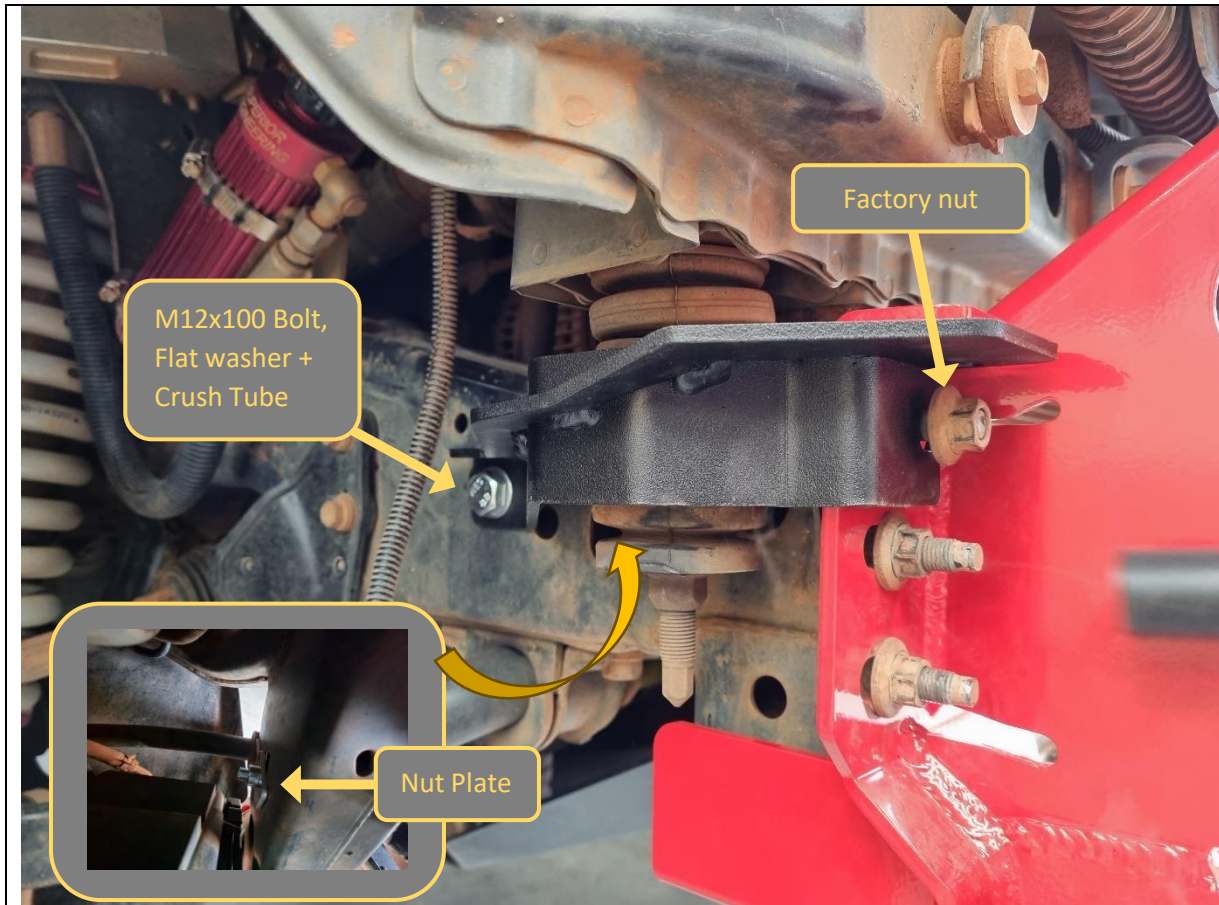
45. Fit the Impact mounts to the chassis, re using the original factory flange nuts (front) and Bolts (Bottom) as shown.

46. Leave bolts finger tight at this stage.

**TOOLS REQUIRED**

**FASTENERS**

Re-Use Factory



47. Fit the chassis brace between the impact assembly and the square slot in the chassis as shown, Secure at the front using the factory nut.

48. Using supplied nut plate, secure M12x100 bolt, washer and crush tube through chassis rail.

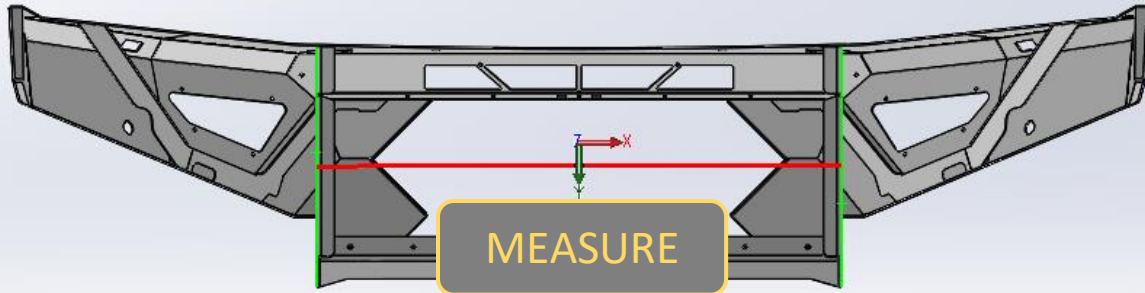
You will need to reach behind the cooling pack with the nut plate to reach the location where the M12x100 bolt comes through on the other side of the chassis rail.

49. Leave bolts finger tight at this stage.

**TOOLS REQUIRED**

**FASTENERS**

2x M12x100 hex bolt  
2x M12 flat washer  
2x Crush tube  
2x nutplate



50. Measure Distance between outside edges uprights on bar using tape measure. Write distance below for reference if required.

Bar Upright Width = \_\_\_\_\_mm

51. Adjust mounts by sliding mounts on slots, such that distance between outside edges of mounts is approximately 2mm less than bar.

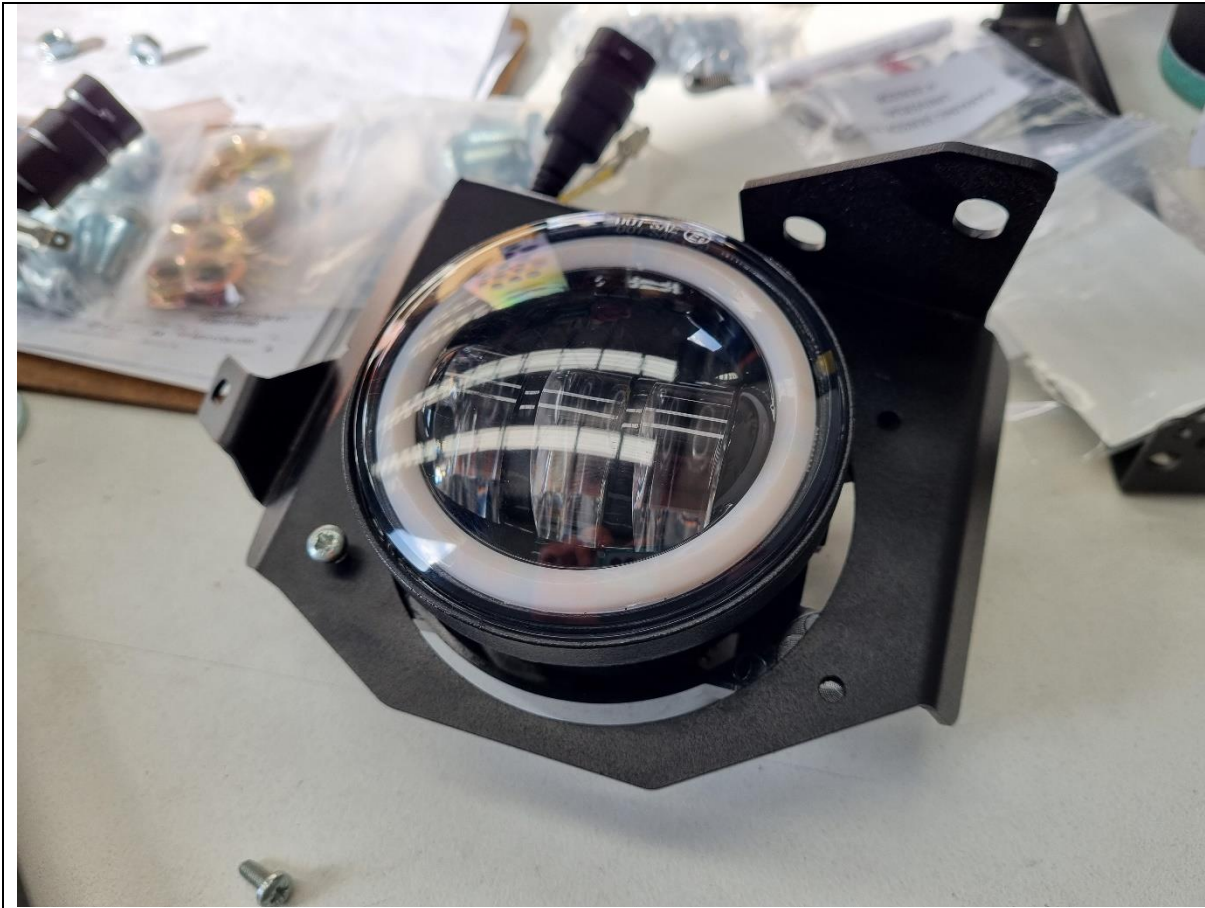
52. Secure and tighten mounts.

**TOOLS REQUIRED**

TAPE MEASURE

**FASTENERS**

Factory Nuts to secure mounts



53. If Optional, Fit New Offroad Aimal fog lamps to the Fog light brackets using M4 Screws, Flat washers, and Flange nuts from the Small Parts Kit.
54. Secure and tighten using 4mm Allen Key and 10mm Spanner

**TOOLS REQUIRED**

Phillips Screwdriver  
7mm Spanner / Socket

**FASTENERS**

4x M4x16 Pan head Screw  
4x M4 Flat Washer  
4x M4 Flange Nut



55. Fit fog light bracket, with fog light in place to the Mesh panel using 2x M8x12.
56. Alternatively, if fitting other lights to mesh (such as cube light), do so now.
57. Secure and tighten using 13mm Spanner or socket.
58. Repeat for other side of bar.

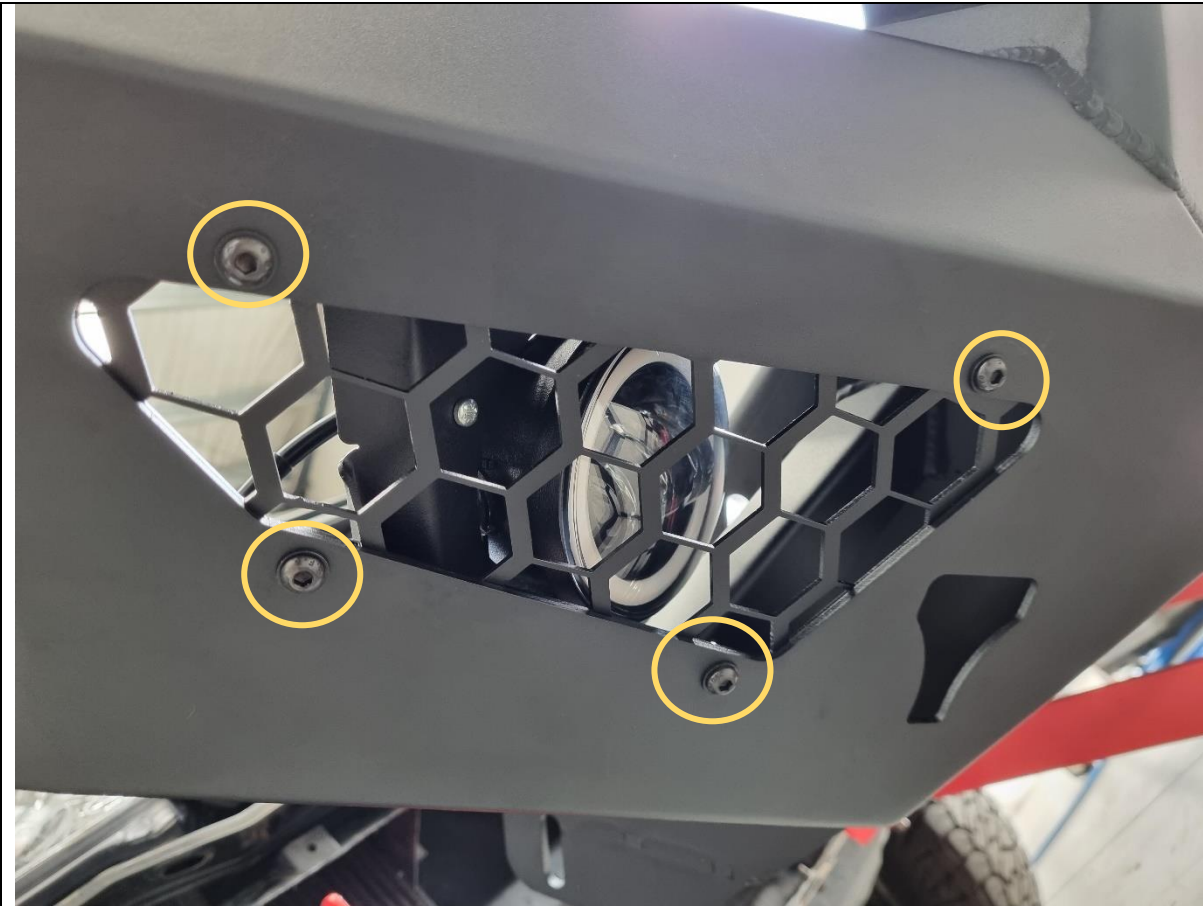
**TOOLS REQUIRED**

13mm Spanner / Socket

**FASTENERS**

2x M8x12 Hex  
2x M8 Flat Washer  
2x M8 Flange Nut





59. Fit the mesh panels to the wing of the bar. Using the supplied M6x16 Black Button Head fasteners.
60. Secure and tighten using 4mm Hex Key.
61. Repeat for other side of bar.

**TOOLS REQUIRED**

4mm Allen Key  
**10mm Spanner / Socket**

**FASTENERS**

4x M6x16 Black Button Head  
4x M6 Black Flat Washer  
4x M6 Flange Nut



62. Fit 5x Cage nuts from small parts kit to rectangular slots in bottom of wing.

Use a small flat bladed screwdriver to push the edge of the cage to engage with the slot to aid fitting.

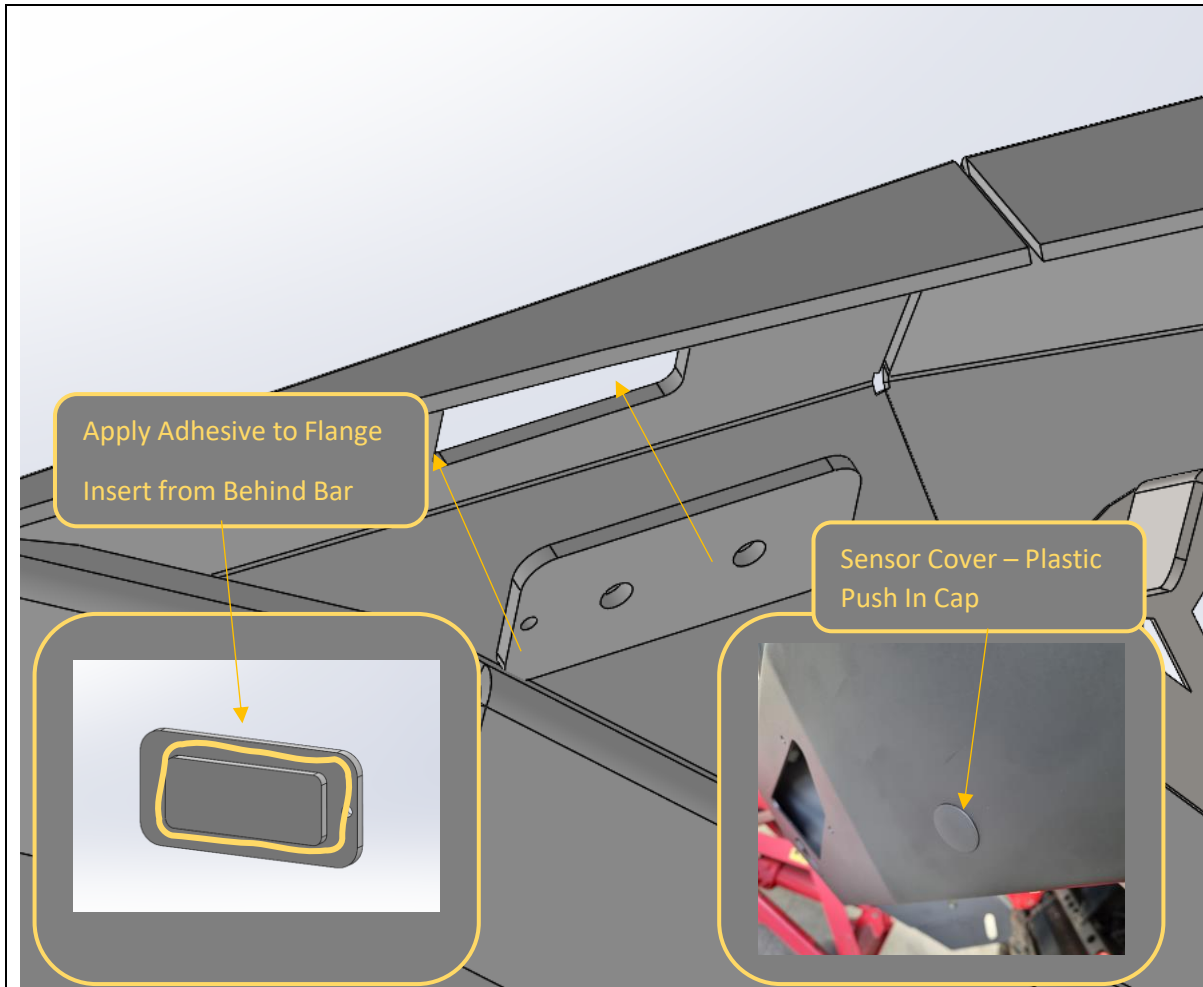
63. Repeat for other side of Bar

**TOOLS REQUIRED**

Small Flat Bladed Screwdriver

**FASTENERS**

5x M6 Cage Nut per side



64. If not fitting headlight washers, install supplied plug plates, using Automotive grade adhesive. Tape in place until adhesive sets.

65. Re-fit parking sensors and plastic housings to the holes provided in the bullbar.

**Note:** On some models, the sensor size is different, and may require drilling the hole out to 24mm using a step drill. Ensure the drilled hole is deburred and painted to prevent rust.

66. If not fitting parking sensors, install supplied plastic push in caps to parking sensor holes.

**TOOLS REQUIRED**

Step drill (24mm)  
Deburring tool  
Rust inhibiting paint

**FASTENERS**



67. If Equipped Re fit headlight washers to bar. Squeeze in the tabs in reverse of removal process to fit.

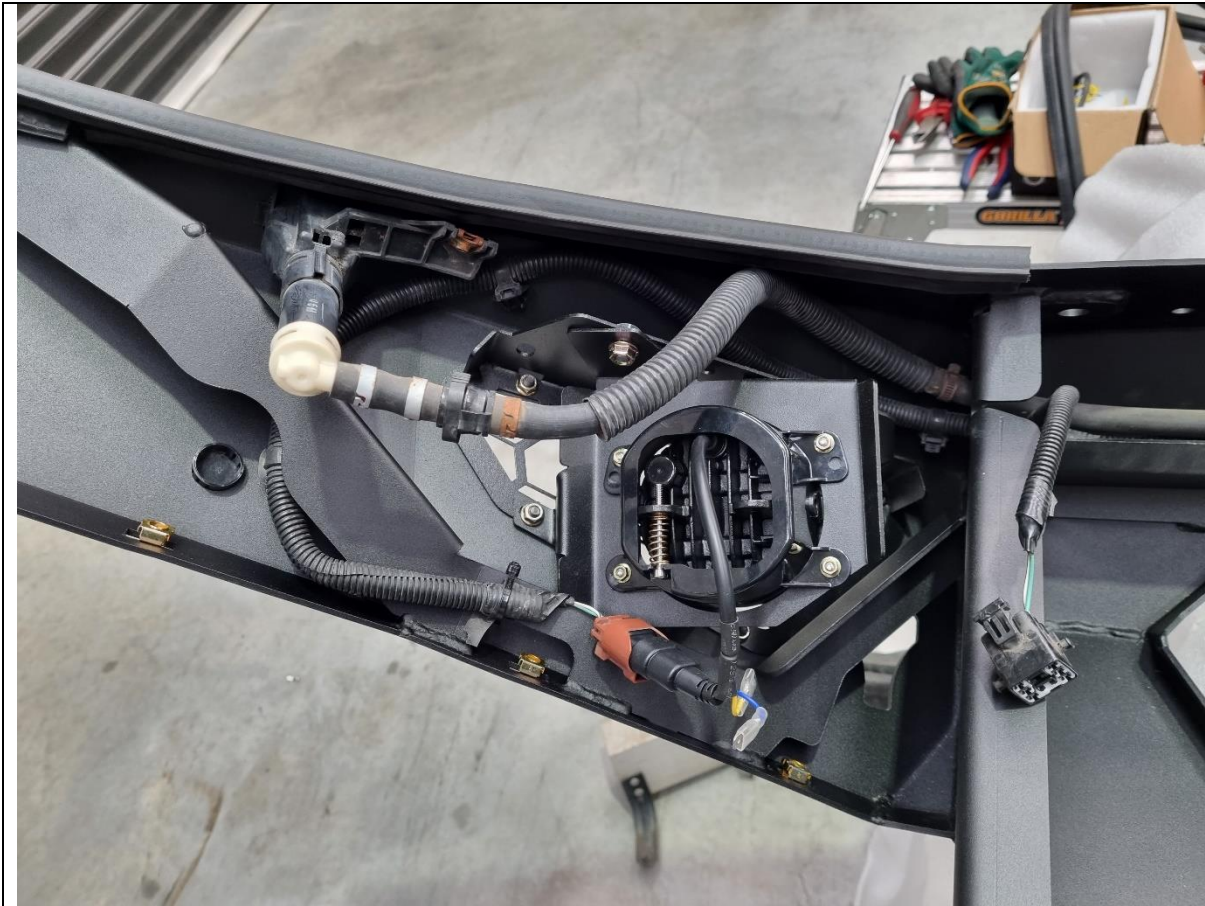
68. Once fitted pull out the washer assembly with long nose pliers and adjust the washer nozzles to squirt towards the headlights, final adjustment can be performed when the bar is fitted to the car.

69. Once aligned re-fit the plastic washer cap to the washer. It is recommended to paint the cap Matte black to match the bar appearance if the bar is not color coded.

**TOOLS REQUIRED**

Long Nose Pliers

**FASTENERS**



- 70. If equipped Re Fit parking sensors to the bar. Insert the sensor from the front of the bar. Push the sensor through and allow the tabs to expand and hold the sensor in place.
- 71. Re fit electrical harness and Headlight washer hose to bar. Secure using cable ties. Ensure the main harness connector has enough length and is located to the inside of the upright.

**TOOLS REQUIRED**

**FASTENERS**

Cable Ties



72. Fit Pinch Weld to bar. Position on wings under area where headlights will be.

**TOOLS REQUIRED**

**FASTENERS**



73. If fitting an integrated light bar, do so now.

74. The bar is designed to fit the Offroad Animal 22 inch light bar. Secure with M6 Fasteners supplied with the light bar.

75. The bar can accommodate most other "20 inch" size light bars.

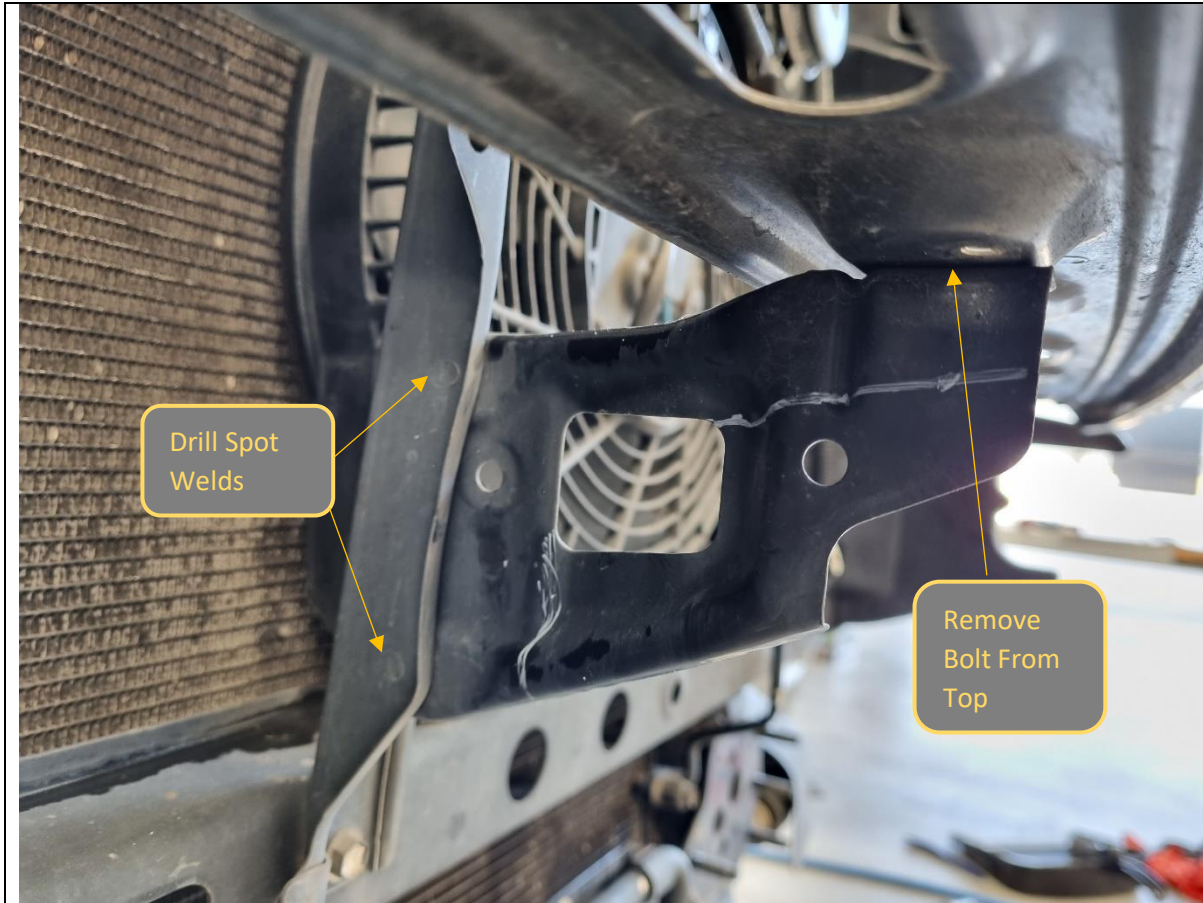
76. Fit the center pan support brace, using M6x16 Button Head bolts, Flat Washer, and Flange nuts.

**TOOLS REQUIRED**

4mm hex/Allen key

**FASTENERS**

5x M6x16 Black Button Head  
5x M6 Black Flat Washer  
5x M6 Flange Nut



<p>77. If planning to fit a winch with an integrated control box, the small triangular bracket in the center of the grille needs to be removed.</p> <p>78. Remove the Bolt securing the top of the bracket to the grille support beam.</p> <p>79. Drill out the 2x Spot welds securing the bracket to the upright.</p>	<p><b>TOOLS REQUIRED</b></p> <p>10mm Socket 8mm Drill Bit Electric Drill</p>
<p>80. It is also helpful to pre-position the winch on the winch cradle before the bar is fitted to the car.</p>	<p><b>FASTENERS</b></p>





81. With assistance, either from another person, or a lifting trolley, lift the bar onto the mounts on the vehicle.

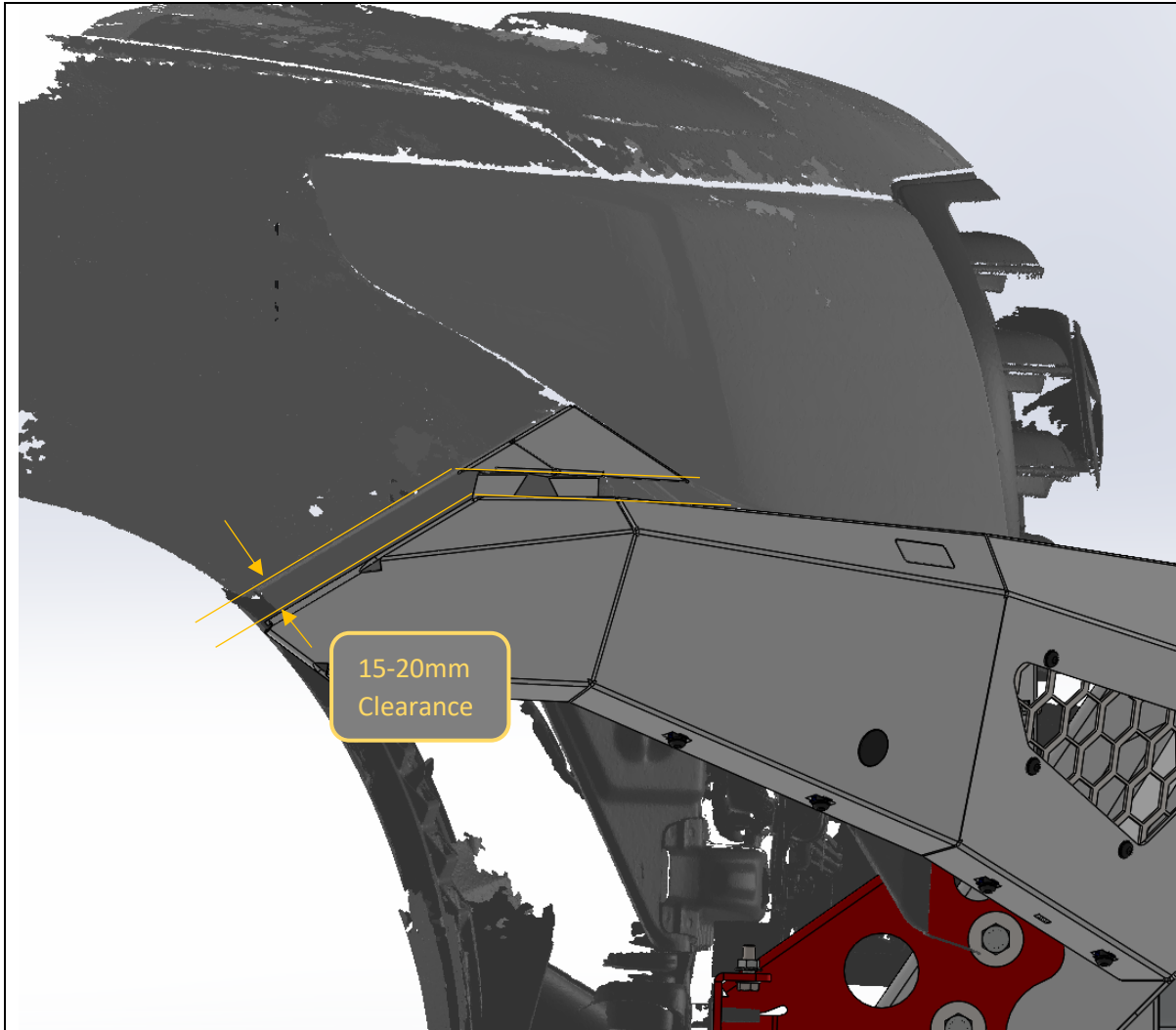
82. Secure with 4x M12x30 Bolts, Heavy Duty washers and M12 Nyloc Nuts per side, Finger tight at this stage.

**TOOLS REQUIRED**

Lifting Trolley

**FASTENERS**

8x M12x30 Bolt  
10x M12 Heavy Duty Large Washer  
2x M12 Nyloc Nut  
6x M12 Flange Nut



83. With assistance, from another person, Align the bar with the edges of the vehicle. Adjust such that the clearances are neat and even side to side.

Acceptable range of clearances shown in image above.

84. Once in position tighten the M12 Bolts using socket and spanner. An impact driver may be used to speed up this process.

**TOOLS REQUIRED**

Lifting Trolley  
18/19mm Socket and Spanner

**FASTENERS**



85. If Fitting a winch, do so now.

86. The bar is designed to fit most low mount winches, in foot down configuration. WARN ZEON 10 is largest winch confirmed to fit.

87. As mentioned in previous steps If fitting winch with top mounted control box, bumper support bracket shown in inset photo must be removed.

88. Ensure clutch handle will be accessible through access hole in front mesh panel. Refer to winch instructions regarding changing clutch handle location.

**TOOLS REQUIRED**

Refer to winch fitting instructions

**FASTENERS**

Supplied with winch

<p>89. If vehicle is fitted with front camera, the bar will obscure bottom part of front camera image. Additionally, if a large light bar is fitted this will also obscure image in default badge location.</p> <p>90. You can optionally re-locate the front camera to the mesh panel with the optional relocation kit (purchased separately). For camera relocation refer to instructions provided with relocation kit.</p> <p>91. The relocation kit bracket bolts to rear side of the mesh fairlead.</p> <p><b>Note:</b> On some earlier production batches, the cutout size is incorrect and needs to be enlarged with a die grinder or similar. Refer to diagram above for alignment and measurements.</p> <p>The new dimensions are 37mm wide x 44.5mm tall. Take off 1mm on the left + right edges, and 9.5mm off the bottom edge. The top edge of the opening does not need to be modified.</p> <p>Paint over exposed metal edges to prevent rust.</p>	<p style="text-align: center;"><b>TOOLS REQUIRED</b></p> <p style="text-align: center;">Refer to relocation Kit</p> <hr/> <p style="text-align: center;"><b>FASTENERS</b></p> <p style="text-align: center;">Refer to relocation Kit</p>



92. If Required, Fit winch fairlead to Mesh Fairlead Mount. Use M10 or 3/8" Fasteners supplied with winch. The bar is only compatible with Hawse type fairleads.

93. Fit Number plate flip kit to fairlead mount, using fasteners supplied in kit.

**TOOLS REQUIRED**

**FASTENERS**  
Supplied with winch fairlead



94. Fit the Mesh Fairlead Mount the center of the bar, using M8x16 Button head (Top), M8x20 Hex (Bottom) M8 Flat washer.

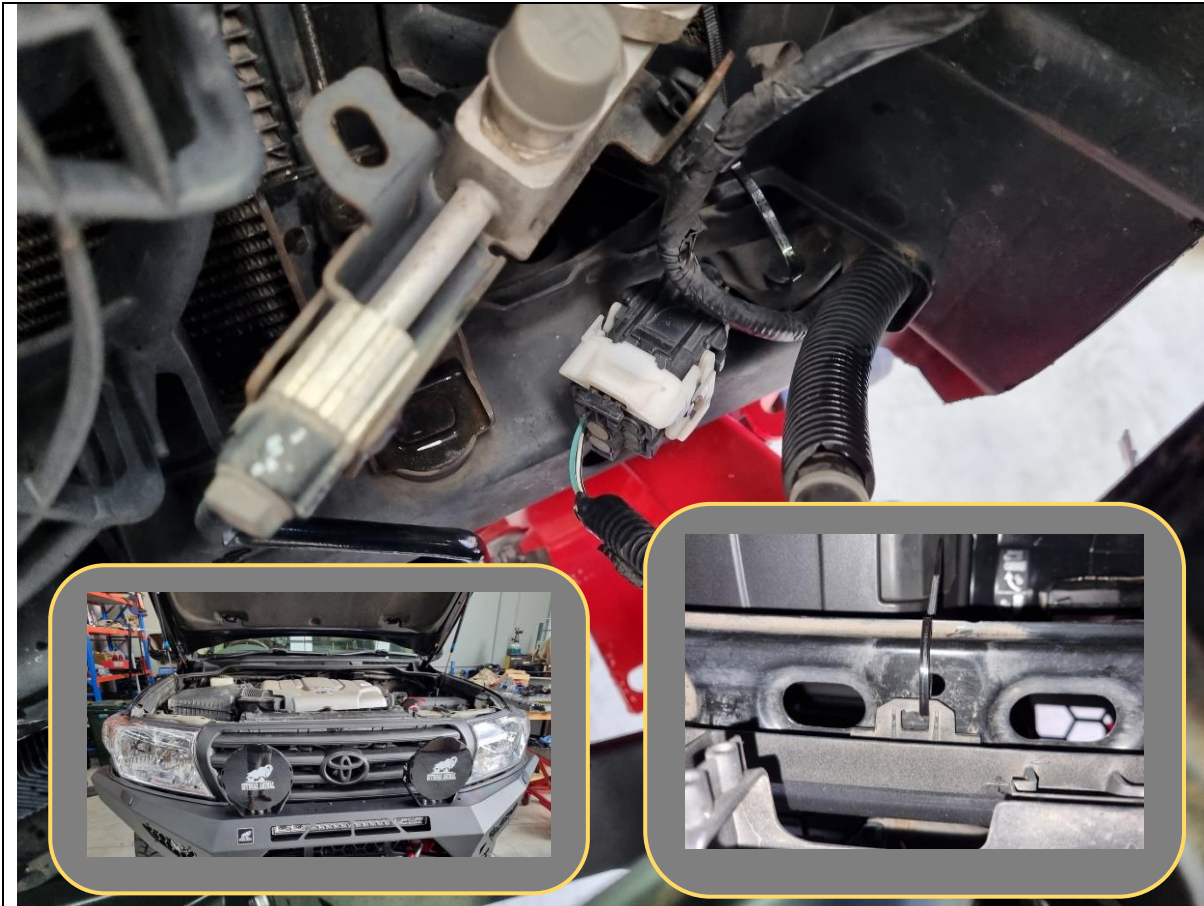
95. Tighten fasteners using 13mm socket / spanner and 5mm Allen Wrench.

**TOOLS REQUIRED**

13mm Spanner  
**5mm Allen Wrench**

**FASTENERS**

2x M8x16 Button Head  
2x M8x20 Hex Head  
4xM8 Flat Washer



96. Re-Fit Grille to the vehicle. Use original fasteners on top and secure with cable tie through holes on cross beam on bottom.

97. Re Connect Electrical Harness and headlight washers behind grille. If equipped also reconnect Camera harness.

98. Replace upper radiator cowl using original clips.

**TOOLS REQUIRED**

10mm Socket / Spanner

**FASTENERS**

Factory clips (re-use)  
Factory Bolts (re-use)  
Cable Ties



99. Fit Center Bash Plate using, 6x M8x20 button head and Black Flat washer, into the nuts in the bar.
100. Secure back of Center Bash Plate using M10x25 Button head, Flat washers, and M10 Flange nuts.
101. Tighten Bottom fasteners using 6mm Allen wrench and 16mm spanner
102. Tighten front fasteners using 13mm socket / spanner and 5mm Allen Wrench.

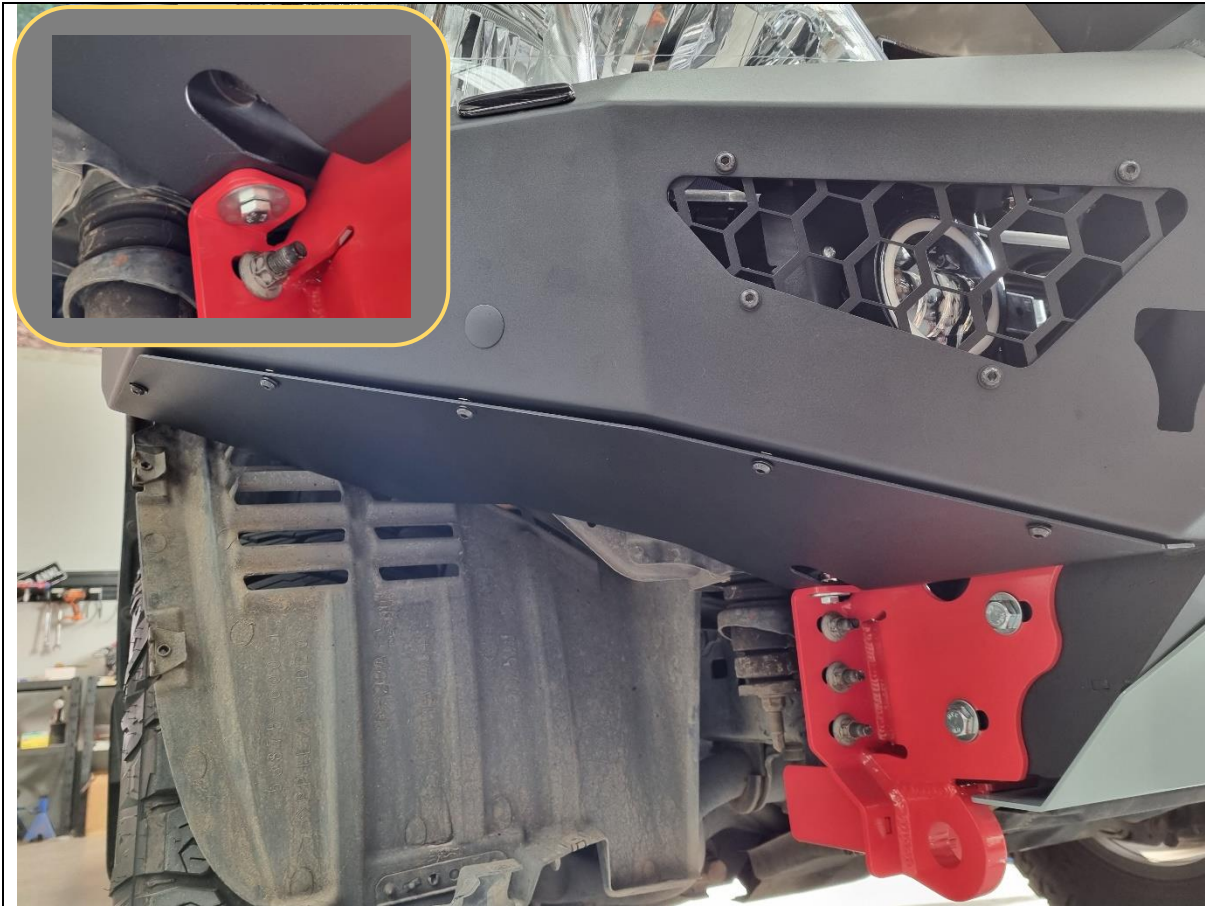
**TOOLS REQUIRED**

15mm Spanner  
**5,6mm Allen Wrench**

**FASTENERS**

2x M10x25 Button Head  
2x M10 Flat Washer  
2x M10 Flange Nut  
6x M8x32 Button Head  
6xM8 Flat Washer





103. Fit Side Underpanels using, M6x16 button head and flat washer into the cage nuts placed earlier.

104. Tighten with 4mm Allen wrench

105. Secure back of side under panel to mount using M8x25 Hex Bolt, Flat washer and M8 Flange Nut.

106. Leave finger Tight at this stage

**TOOLS REQUIRED**

**FASTENERS**

10x M6x16 Button Head  
10x M6 Flat Washer  
2x M8x25 Hex Head  
2x M8 Flange Nut  
2x M8 Flat Washer



107. Using the edge of the under panel as a guide mark the wheel arch liner, approximately 15mm beyond the intersection of the under panel.

108. Cut along line as marked using utility Knife

109. Tuck the wheel arch liner behind the flange on the under panel

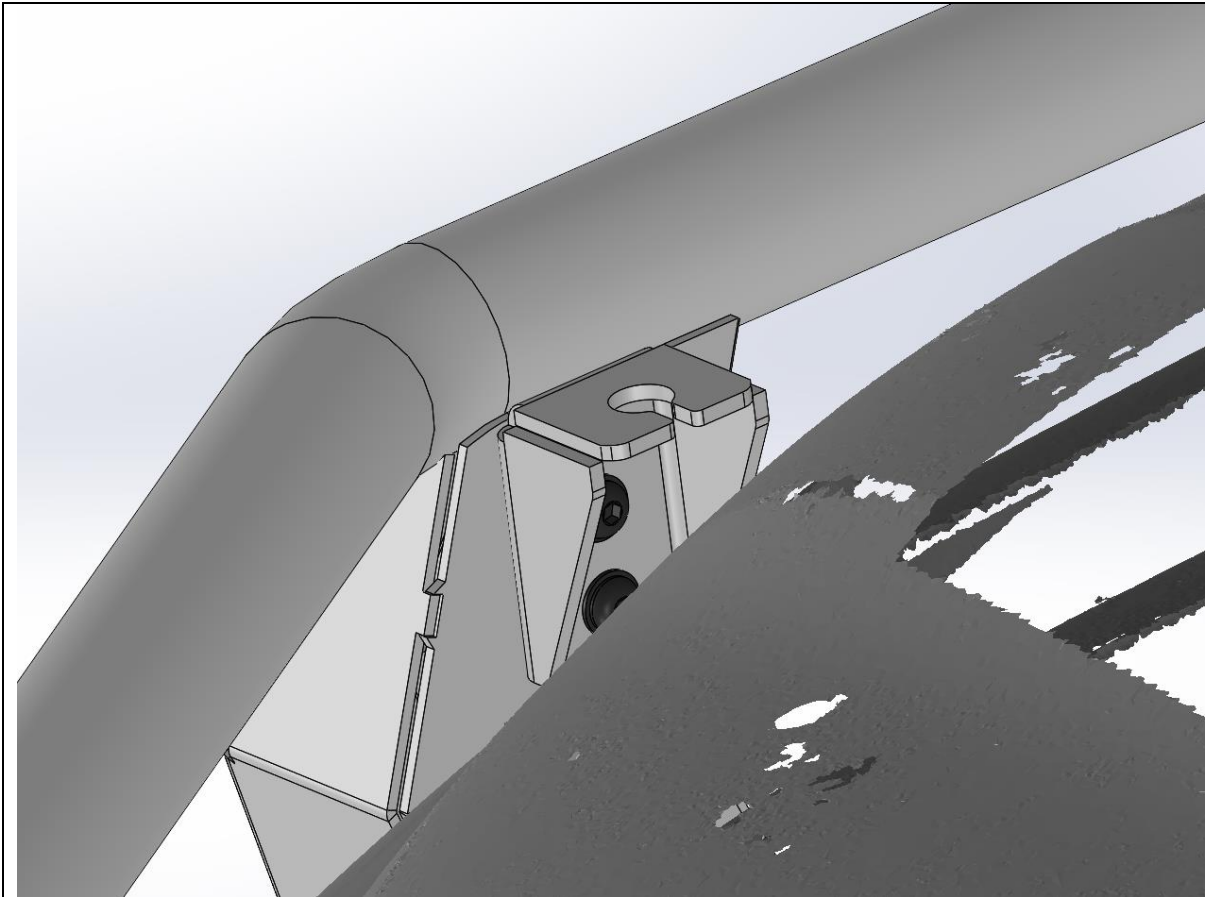
110. Tighten all under panel bolts

111. Complete for other side of vehicle.

**TOOLS REQUIRED**

Utility Knife  
13mm Spanner  
5mm Allen Wrench  
4mm Allen Wrench

**FASTENERS**



112. If fitting antenna to Toro bar, fit the antenna brackets to the M8 Threaded inserts in the uprights. Note that brackets are handed.

113. Tighten with 5mm Allen wrench

114. Fit Antenna to the bracket as per antenna manufacturer's instructions

115. Retain unused brackets for future use.

**TOOLS REQUIRED**

5MM Allen Key

**FASTENERS**

2x M8x20 Button Head Screw  
2x M8 Black Flat Washer



- 116. Fit the offroad Animal Logo plate, using the adhesive backing.
- 117. Fit ADR compliance plate in a visible location. We recommend the underside of the bash plate.
- 118. Re-Fit number plate to number plate flip.
- 119. Double check all fasteners are tight, and you are done!

**TOOLS REQUIRED**

**FASTENERS**



120. Head Bush and Enjoy your newly protected 200 series!

**For contact details see [www.offroadanimal.com](http://www.offroadanimal.com)**