



## Jeep Grand Cherokee WK2

### MY2017-Current

### Pre Runner/ Steel front bumper

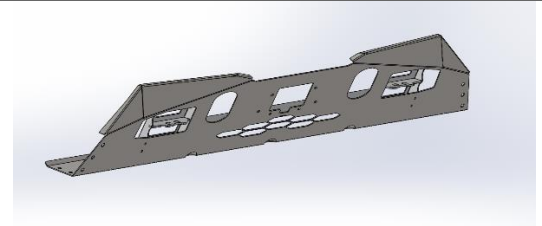
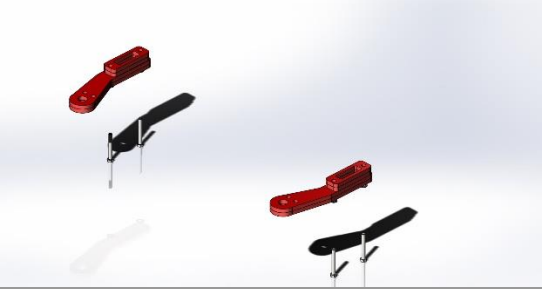
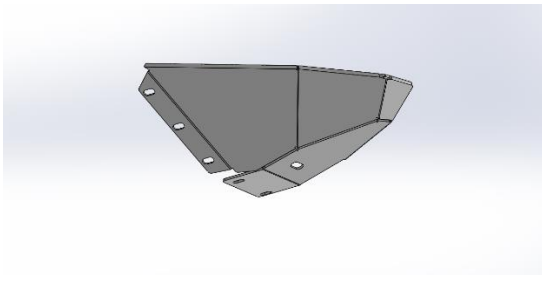
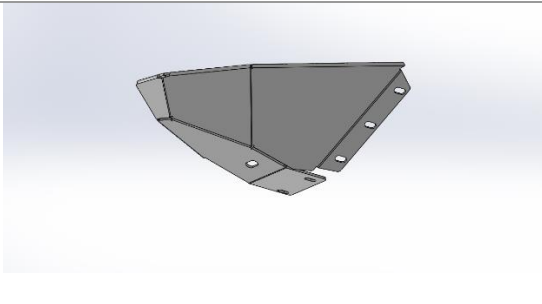
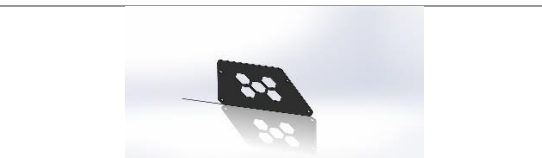
#### **IMPORTANT! – READ BEFORE INSTALLATION**


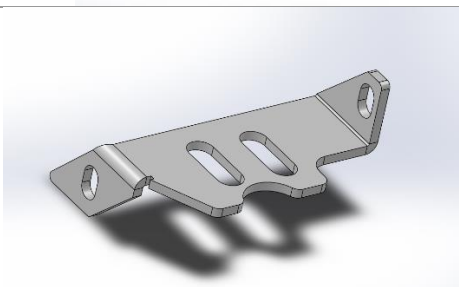
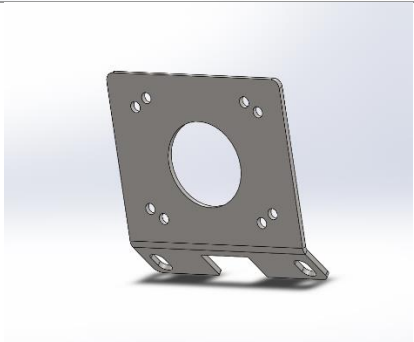
- When installed in accordance with these instructions, the front protection bar does not affect the operation of the vehicles SRS airbags.
- This product must be installed exactly as per these instructions using only hardware supplied.
- Take a few moments to read instructions thoroughly before beginning work.
- In the event of damage to any component please contact OFFROAD ANIMAL to arrange repair/replacement of components.
- Do not use this product for any vehicle make or model other than that specified on these instructions.
- Do not remove labels from this product.
- This product and its fixings must not be modified in any way unless stated in these fitting instructions.
- The installation of this product is recommended for trained personnel.
- These instructions are correct at time of publication. OFFROAD ANIMAL cannot be held responsible for the impact of any changes subsequently made by the vehicle manufacturer. If you find something has changed please contact us to let us know!
- During installation it is the duty of the installer to check correct operation/clearances of all components.
- If Instructions are to be printed for reference in the workshop, it is recommended that they are printed in colour, for best legibility.
- Estimated install time: 2 hours

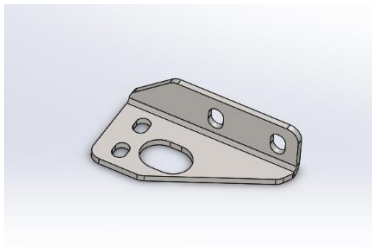
# PARTS LISTING

**IMPORTANT:** Check all parts are present before beginning work! Contact OFFROAD ANIMAL if something is missing.

## Main Parts – In the Box

Qty	Part Number	Description	Image
1	PR-JGC-WK2-17-ASM1	wk2 2017 pre runner kit no mounts	
1	RP-JGC-WK2-11-ASMO	Recovery Points Wk2 (some customers may already have these)	
1	W-0015L	Wk2 Pre-Runner wing LH	
1	W-0015R	Wk2 Pre-Runner wing RH	
1	P-0021	Acc Cover	

1	B-0118L	Pre-Runner wing support LH	
1	B-0118R	Pre-Runner Wing support RH	
1	B-0320L	2017 PR PLATE MOUNT LH	
1	B-0320R	2017 PR PLATE MOUNT RH	
1	<b>Optional extra ACC mount part B-0300</b>	2017 Acc mount wk2	
1	<b>Optional extra ACC mount part B-0063</b>	Acc cover	
1	<b>B-0325L</b>	2017 Nudge bar bracket Supplied with nudge bar	

<b>1</b>	<b>B-0325R</b>	2017 Nudge bar bracket Supplied with nudge bar	
----------	----------------	---	--

### Small Parts – Contained in Small Parts Kit Bag

Qty	Part Number	Description
<b>12</b>	M8 FW Black Zinc	M8 Flat washer black zinc plate
<b>12</b>	M8 x 20 BHCS BZ	M8 x 20 Button Head Cap Screw, Black Zinc
<b>12</b>	M8 FN	M8 Flange Nut
<b>4</b>	M6x16 BHCS BZ	M6 x 16 Button Head Cap Screw, Black Zinc
<b>4</b>	M6 FW BZ	M6 Flat washer, Black Zinc
<b>8</b>	M6 FN	M6 Flange Nut
<b>8</b>	M10 FW	M10 Flat Washer
<b>4</b>	M6 x 16 BHCS BZ	M6 x 16 Button Head Cap Screw, black zinc
<b>4</b>	M10 x 45	M10 x 50 Hex Bolt, Zinc Plate
<b>4</b>	M10 X 25	M10X25 Hex Bolt, Zinc Plate
<b>1</b>	OFA-LOGO	OFFROAD ANIMAL METAL LOGO
<b>1</b>	Pinch Weld 2M	Pinch Weld Black 14mm x 9mm x 2M
<b>4</b>	M5 x 30 pan	M5 x 30 Pan head screw zinc <b>Optional extra part</b>
<b>2</b>	M8 x 30	M8 x 30 Hex zinc <b>Optional extra part</b>
<b>2</b>	M8 FW	M8 Flat washer <b>Optional extra part</b>
<b>2</b>	M8 FN	M8 Flange nut <b>Optional extra part</b>

## TOOLS REQUIRED

The following tools will be required to install the product.

Hand Tools	Power Tools	Workshop Equipment
10mm Spanner 13mm Spanner 16mm Spanner 4mm Allen Key 5mm Allen Key 10mm Socket 13mm Socket 16mm Socket Ratcheting Socket Wrench Flat head screw driver or Pry Tool Side Cutters Phillips head screw driver	None	None

## GENERAL WARNINGS

Take Care not to lose factory hardware, as some will be reused

Take care not to damage parking sensors

If ACC radar is not working as it should, stand side on the vehicle and see which way it's pointing. If pointing up or down adjust screws so it's pointing straight ahead.

**Offroad Animal has become made aware of a few vehicles in USA which have irregular shaped crash bars that clash with our mounts, if so it may be required to trim the contacting sections or remove the factory crash bar.**



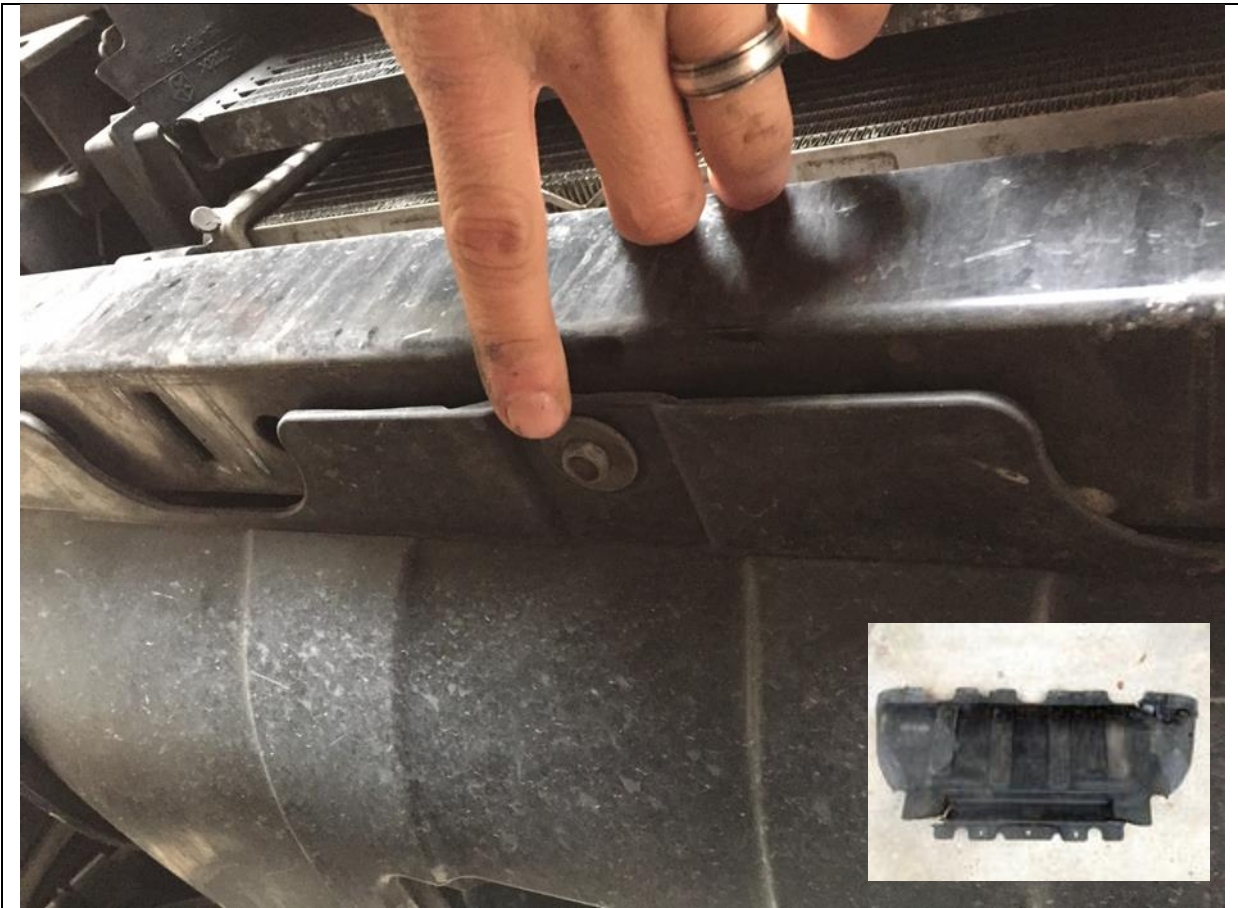
1. First step is to remove the lower air damn fascia. To do this climb under your Jeep and remove all 7 quarter turn clips by hand. Two are tucked up high in each corner and 3 in the middle, with another two off to the side not tucked up.
2. Once they are removed pull the entire lower air damn away from Jeep by hand. You will not be reusing this part

**TOOLS REQUIRED**

**None**

**FASTENERS**

Retain only if you wish to refit later



3. Remove factory Lower Radiator Cover. 3x M6 bolts on front and 2x M8 bolts on back. Use 10mm socket or spanner for front and 13mm for rear

**TOOLS REQUIRED**

**10mm Socket or Spanner**  
**13mm Socket or Spanner**

**FASTENERS**

Retain for reuse



4. Remove factory tie down and or tow points

**TOOLS REQUIRED**

**Socket set**

**FASTENERS**

Discard fasteners



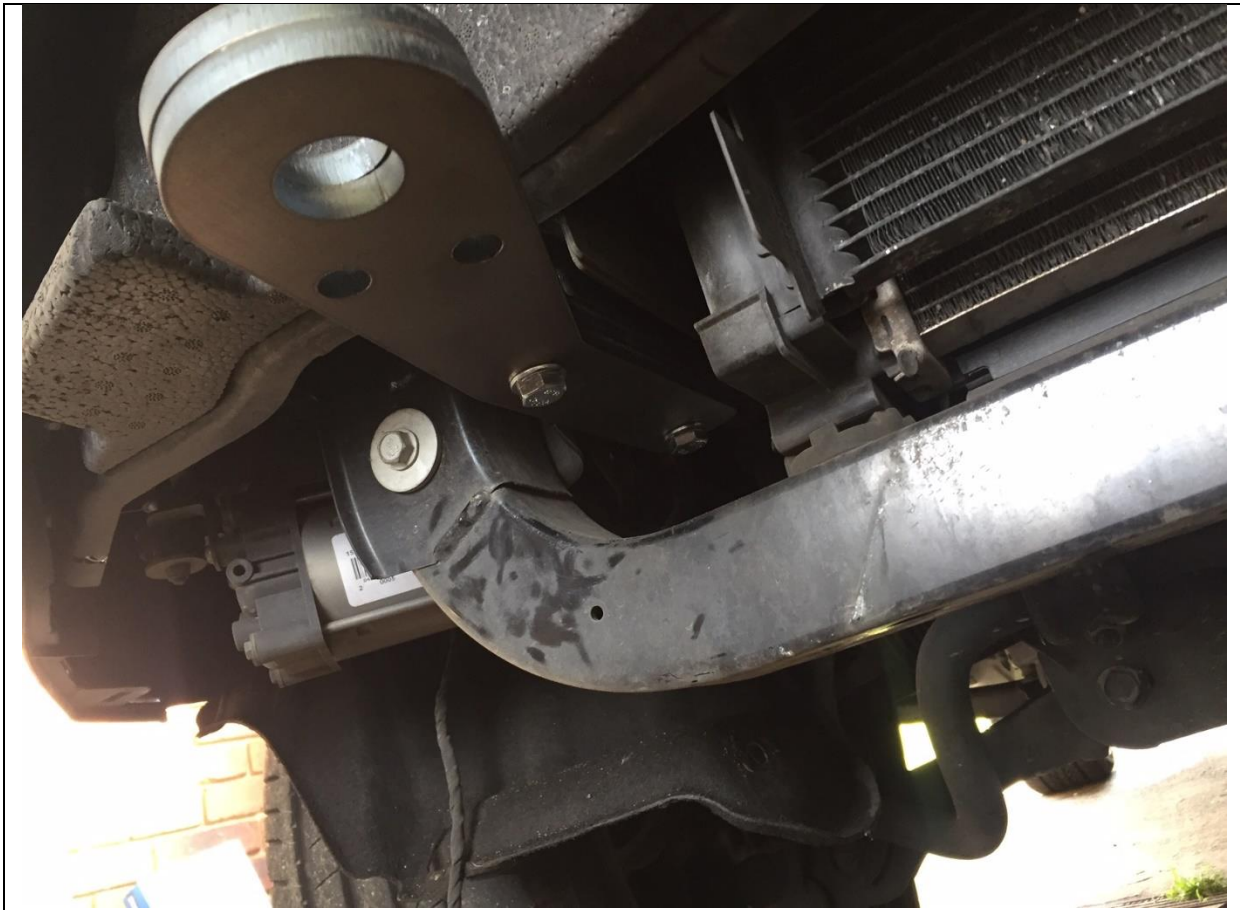


5. Stack Offroad Animal Tow points together as shown with M10 bolts and M10 flat washers.

**TOOLS REQUIRED**

**FASTENERS**

M10x80 Hex bolts (4)  
M10 Flat Washers (4)



6. Fit Offroad Animal Tow points as shown on LH and RH side with M10x80 bolts directly into frame of Jeep. Torque down bolts

**TOOLS REQUIRED**

**16mm Socket or Spanner**

**FASTENERS**

M10 x 80 (4)  
M10 Flat washers (4)



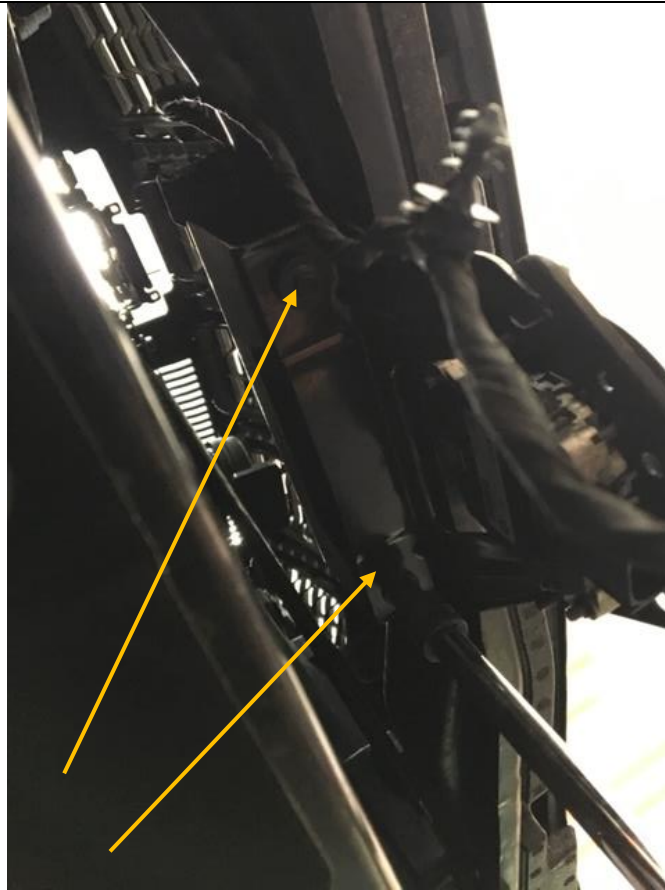
7. If Adaptive cruise control is fitted, unplug loom and pull sensor off posts

**TOOLS REQUIRED**

Trim tool or flat head screw driver

**FASTENERS**

Retain factory clips



8. Remove Bracket that holes sensor

**TOOLS REQUIRED**

**8mm Socket**

**FASTENERS**



9. Fit pinch weld to top edge of main plate and wings

**TOOLS REQUIRED**

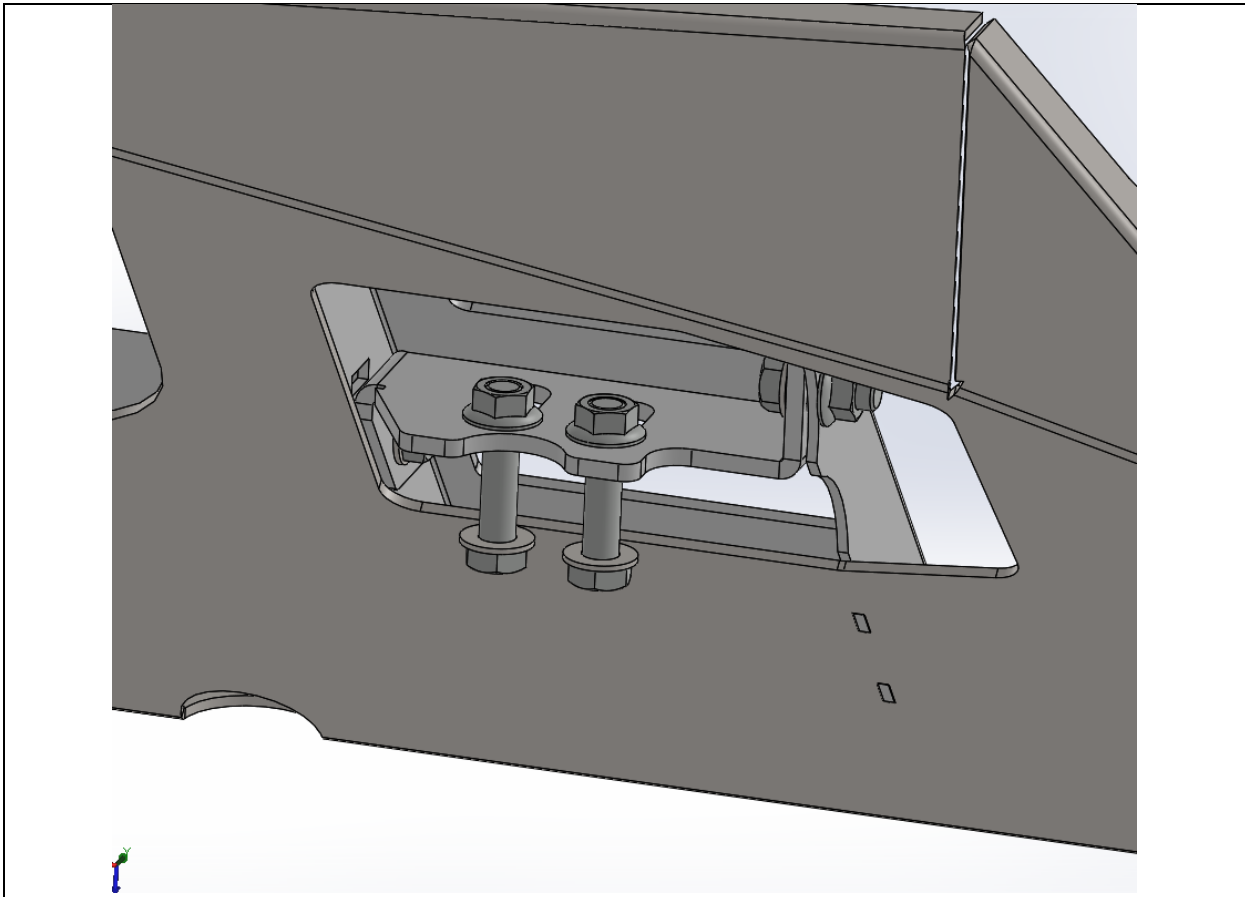
**FASTENERS**



10. Trim edges of pinch weld at edge of plate

**TOOLS REQUIRED**  
Side cutters

**FASTENERS**



11. Fit Pre runner mounts as shown with M10 x 25 bolts, washers and flange nuts

**TOOLS REQUIRED**  
16 or 17mm Spanner or socket (depends on our supplier)

**FASTENERS**

M10 x 25 (4)  
M10 FW (4)  
M10 FN (4)



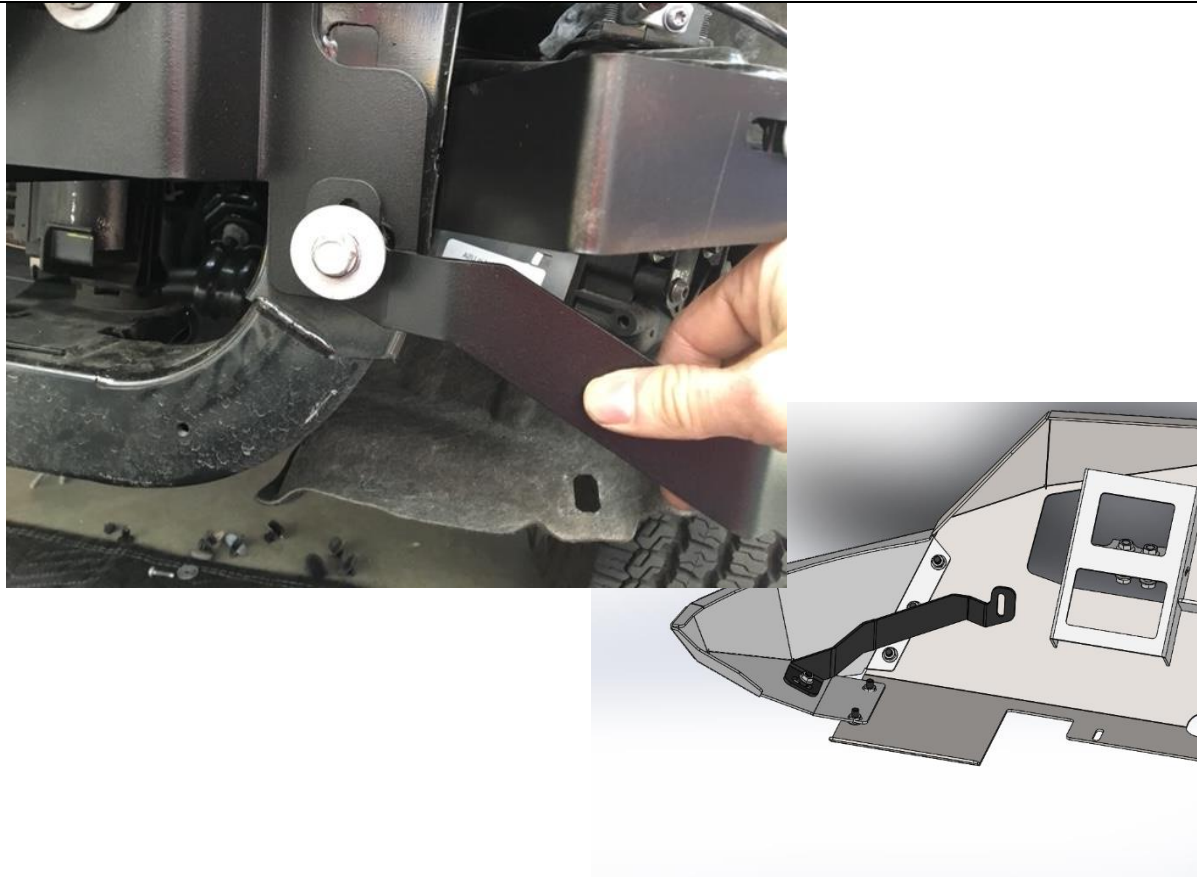
12. Lift Main plate on to Jeep. Windows of usset on main plate fits over tow points like shown.
13. Loosely fit 3 M6 bolts on underside to hold main plate up
14. Use M10 x 40 hex bolts, flat washers and flange nuts through Pre Runner Upper Mounts and secure to tow points. Leave loose for now.

**TOOLS REQUIRED**

**FASTENERS**

- Factory m6 bolts
- M10 x 40 hex (4)
- M10 Flat washer (4)
- M10 Flange nut (4)





15. Fit Pre runner wing support as shown in bottom right picture. One end of side wing shown with M8x30 button head cap screw flat washer and flange nut, and one bolt location shown in pic on the left reusing factory bolt
16. Repeat for other side

**TOOLS REQUIRED**

- 5mm allen key**
- 13mm socket**

**FASTENERS**

- M8 x30 BHCS black (2)
- M8 flat washer black (2)
- M8 Flange nut (2)



17. Fit pinch weld to top edge of wings like shown

**TOOLS REQUIRED**

**FASTENERS**



18. Fit wings to centre like shown. Fit top bolt first by putting bolt through front face and using your fingers behind to hold the flange nut.
19. Repeat for other side

**TOOLS REQUIRED**  
**5mm Allen Key**

**FASTENERS**

M8 x 20 BHCS black (2)  
M8 flat washer black (12)  
M8 flange nut (2)



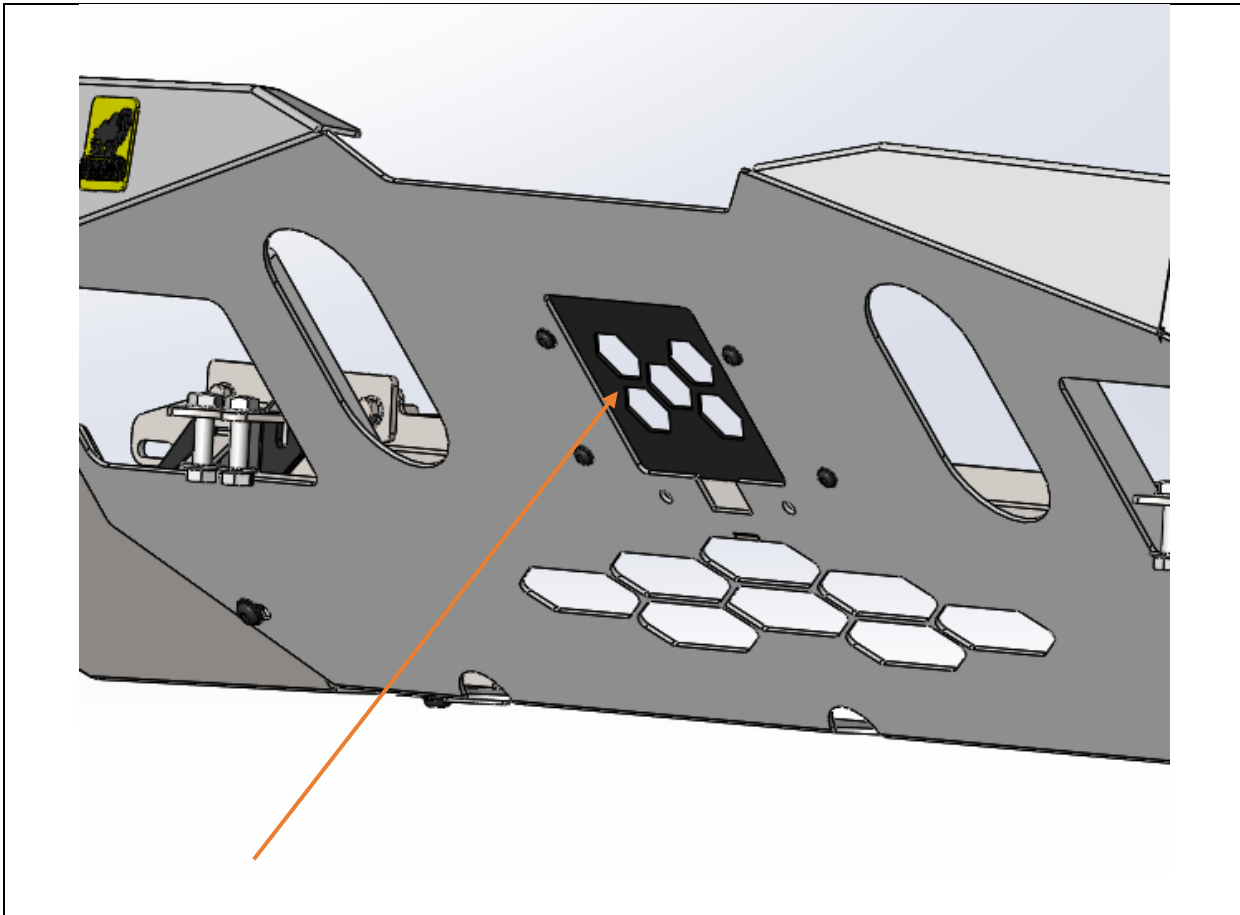
- 20. You can reach the rest of the nuts on the back of the Pre runner by reaching arounds from under the bumper. Leave all bolts loose at this moment
- 21. Repeat for other side

**TOOLS REQUIRED**

**5mm Allen key**

**FASTENERS**

M8 x 20 BHCS black (8)  
M8 flat washer black (8)  
M8 flange nut (8)



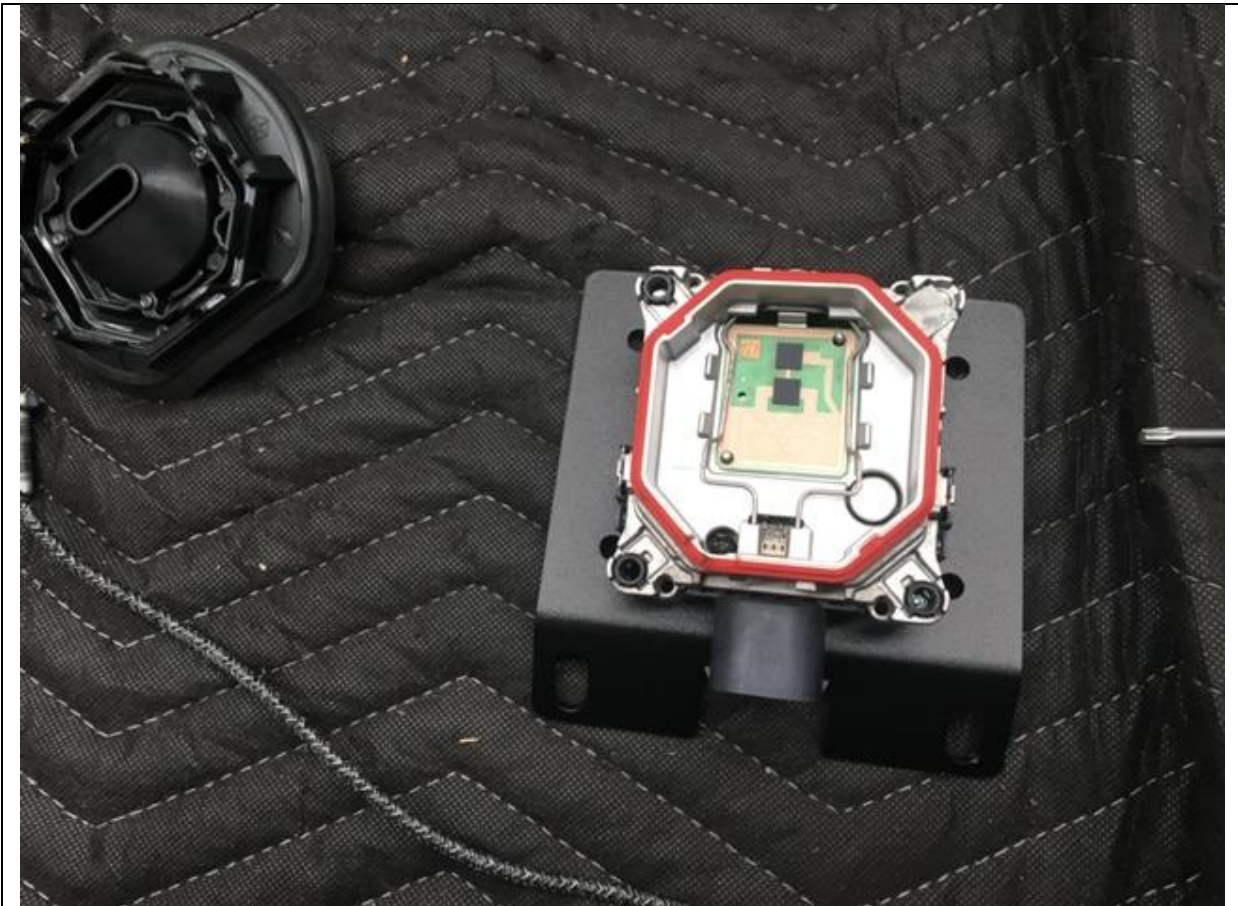
- 22. If no Adaptive cruise control is fitted, then fit ACC cover plate with M8 x 16 button head cap screws (black zinc), flat washers and flange nuts
- 23. Otherwise skip to next step

**TOOLS REQUIRED**

**4mm Allen Key**

**FASTENERS**

M6 x 16 BHCS black (4)  
M6 flat washer black (4)  
M6 flange nut (4)



- 24. If you have Adaptive Cruise control you will need optional Offroad Animal Part " PR-JGC-WK2-14-ASM3"
- 25. Fit Radar sensor to Acc Mount Wk2 plate (**use plate with large circle cut in middle**) with supplied M5 x 30 pan head screws in optional kit. This will involve using a flat screw driver to remove the outside cover and remove factory adjusting screws and replace with supplied M5x30 Pan heads

**TOOLS REQUIRED**

**Phillips head screw driver**

**FASTENERS**

**M5 x 30 Pan head (4)**



- 26. Feed Sensor and plate through Main plate and secure to main plate with supplied M8 x 30 Hex bolts, flat washers and flange bolts from optional kit
- 27. Ensure sensor is facing forward and straight ahead. If pointing down or up it will not function properly. Adjust till it's pointing straight ahead. A test drive can confirm this.

**TOOLS REQUIRED**

**13mm Socket or spanner**

**FASTENERS**

**M8 x 30 Hex bolt (2)  
M8 flat washer (2)  
M8 flange nut (2)**



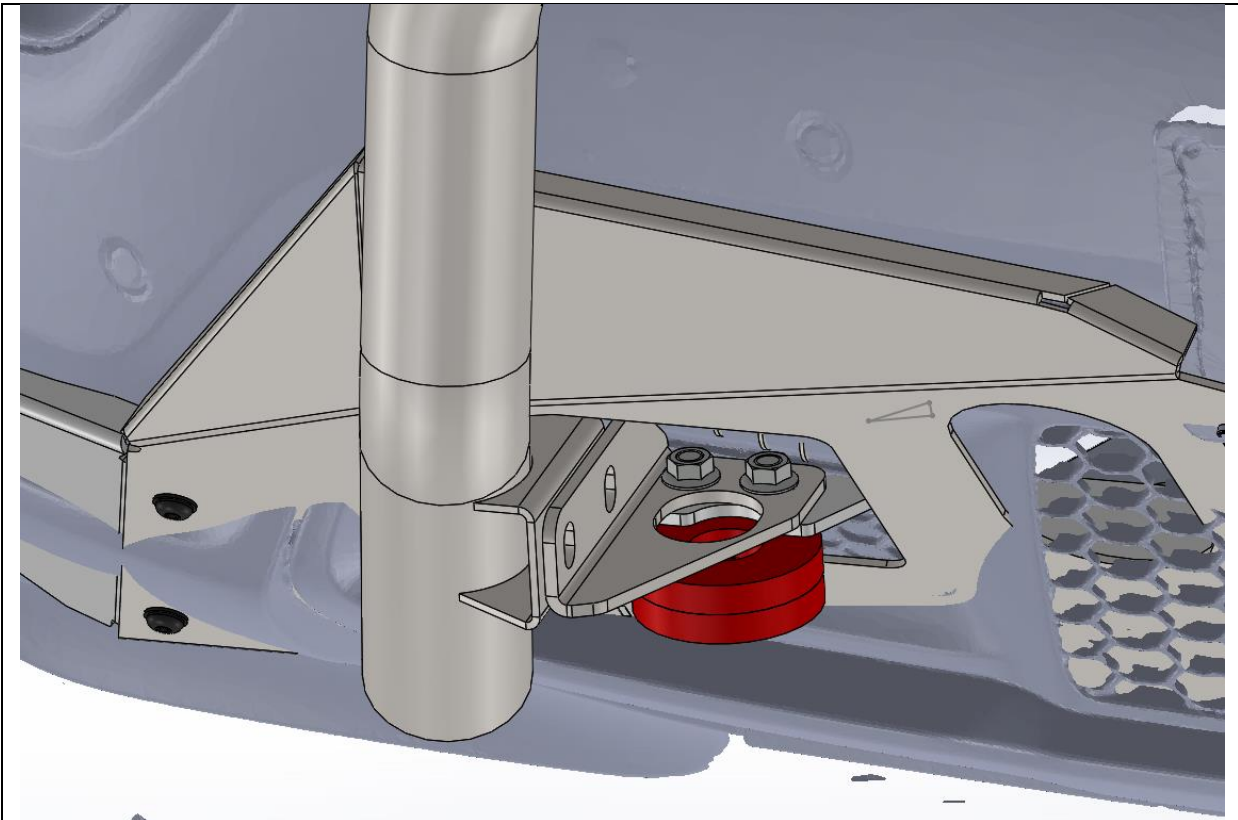
28. Secure ACC cover to main plate with M6 x 16 button head cap screws washers and flange nuts

**TOOLS REQUIRED**  
4mm Allen key

**FASTENERS**

M6 x 16 BHCS black (4)  
M6 flat washer black (4)  
M6 flange nut (4)





- 29. Torque all bolts
- 30. If fitting and Offroad Animal Nudge bar you can do so now as shown with bracket B-0325R and B-0325L
- 31. Note you must use a soft shackle or D shackle instead of a bow shackle if running the nudge bar**
- 32. Bracket goes ontop of the pre runner**

**TOOLS REQUIRED**  
16mm spanner or socket  
5mm Allen Key

**FASTENERS**



33. If your Jeep is equipped with parking sensors and they are going off as they see the new bumper you can fix this by adding a cable tie to the slot that originally holds the lower air damn being pointed to in the picture. Use the cable tie to pull this side of the bumper into the middle of the car. What this does is flex the bumper away from the new pre runner and points it in a slightly new direction.

**TOOLS REQUIRED**

**FASTENERS**

Cable ties (not supplied)



- 34. Fit logo plate to bumper. If fitting nudge bar hold off until that is on before doing this step.
- 35. You are done, enjoy the coolness that is your Jeep now.

**TOOLS REQUIRED**

**FASTENERS**