

Jeep Grand Cherokee WK2

MY2016-Current

Pre Runner/ Steel front bumper

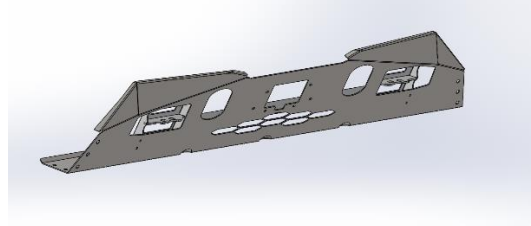
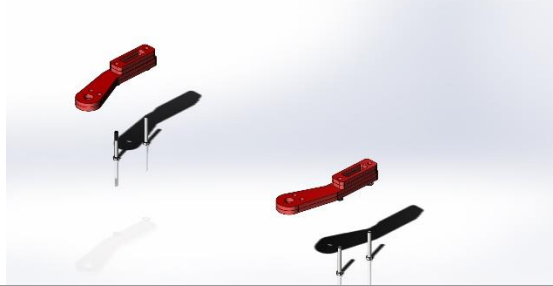
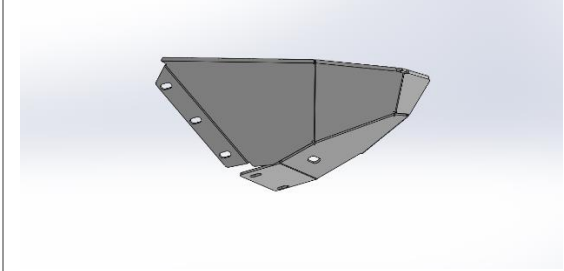
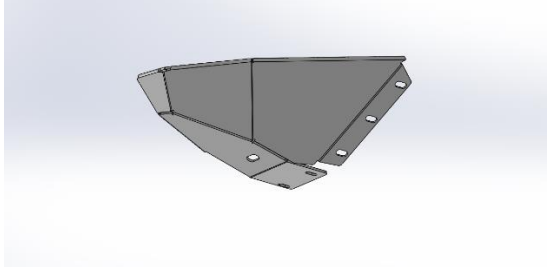
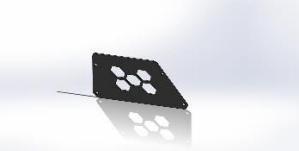
IMPORTANT! – READ BEFORE INSTALLATION

- When installed in accordance with these instructions, the front protection bar does not affect the operation of the vehicles SRS airbags.
- This product must be installed exactly as per these instructions using only hardware supplied.
- Take a few moments to read instructions thoroughly before beginning work.
- In the event of damage to any component please contact OFFROAD ANIMAL to arrange repair/replacement of components.
- Do not use this product for any vehicle make or model other than that specified on these instructions.
- Do not remove labels from this product.
- This product and its fixings must not be modified in any way unless stated in these fitting instructions.
- The installation of this product is recommended for trained personnel.
- These instructions are correct at time of publication. OFFROAD ANIMAL cannot be held responsible for the impact of any changes subsequently made by the vehicle manufacturer. If you find something has changed please contact us to let us know!
- During installation it is the duty of the installer to check correct operation/clearances of all components.
- If Instructions are to be printed for reference in the workshop, it is recommended that they are printed in colour, for best legibility.
- Estimated install time: 2 hours

PARTS LISTING

IMPORTANT: Check all parts are present before beginning work! Contact OFFROAD ANIMAL if something is missing.

Main Parts – In the Box

Qty	Part Number	Description	Image
1	PR-JGC-WK2-17-ASM1	wk2 2017 pre runner kit no mounts	
1	RP-JGC-WK2-11-ASMO	Recovery Points Wk2 (some customers may already have these)	
1	W-0015L	Wk2 Pre-Runner wing LH	
1	W-0015R	Wk2 Pre-Runner wing RH	
1	P-0021	Acc Cover	

1	B-0118L	Pre-Runner wing support LH	
1	B-0118R	Pre-Runner Wing support RH	
1	Optional extra ACC mount part B-0300	2017 Acc mount wk2	
1	Optional extra ACC mount part B-0063	Acc cover	
1	B-0297L	2017 Nudge bar bracket	
1	B-0297R	2017 Nudge bar bracket	

Small Parts – Contained in Small Parts Kit Bag

Qty	Part Number	Description
12	M8 FW Black Zinc	M8 Flat washer black zinc plate
12	M8 x 20 BHCS BZ	M8 x 20 Button Head Cap Screw, Black Zinc
12	M8 FN	M8 Flange Nut
4	M6x16 BHCS BZ	M6 x 16 Button Head Cap Screw, Black Zinc
4	M6 FW BZ	M6 Flat washer, Black Zinc
4	M6 FN	M6 Flange Nut
4	M10 FW	M10 Flat Washer

4	M6 x 16 BHCS BZ	M6 x 16 Button Head Cap Screw, black zinc
4	M10 x 45	M10 x 45 Hex Bolt, Zinc Plate
1	OFA-LOGO	OFFROAD ANIMAL METAL LOGO
1	Pinch Weld 2M	Pinch Weld Black 14mm x 9mm x 2M
4	M5 x 30 pan	M5 x 30 Pan head screw zinc Optional extra part
2	M8 x 30	M8 x 30 Hex zinc Optional extra part
2	M8 FW	M8 Flat washer Optional extra part
2	M8 FN	M8 Flange nut Optional extra part

TOOLS REQUIRED

The following tools will be required to install the product.

Hand Tools	Power Tools	Workshop Equipment
10mm Spanner 13mm Spanner 16mm Spanner 4mm Allen Key 5mm Allen Key 10mm Socket 13mm Socket 16mm Socket Ratcheting Socket Wrench Flat head screw driver or Pry Tool Side Cutters Phillips head screw driver	None	None

GENERAL WARNINGS

Take care not to damage parking sensors

If ACC radar is not working as it should, stand side on the vehicle and see which way it's pointing. If pointing up or down adjust screws so it's pointing straight ahead.



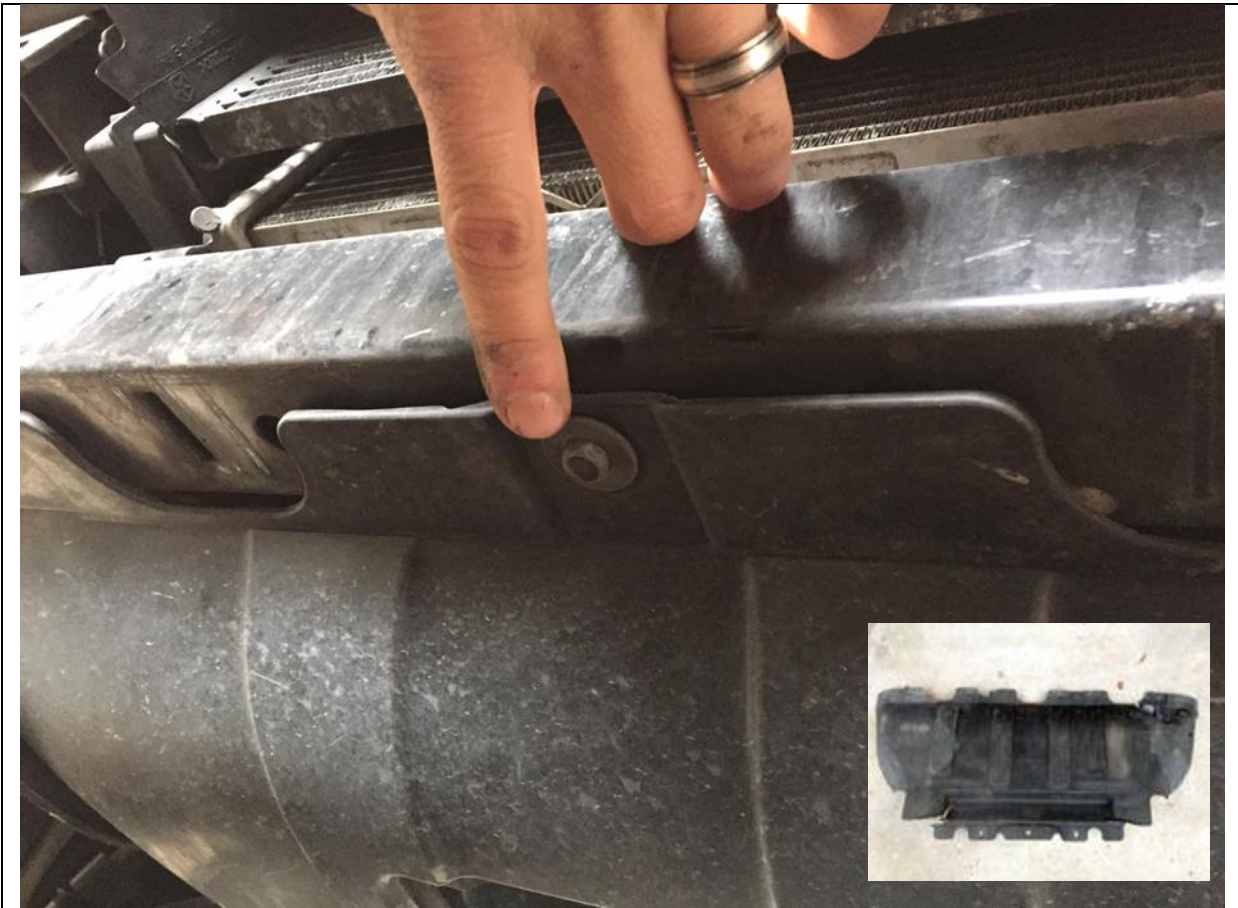
1. First step is to remove the lower air damn fascia. To do this climb under your Jeep and remove all 7 quarter turn clips by hand. Two are tucked up high in each corner and 3 in the middle, with another two off to the side not tucked up.
2. Once they are removed pull the entire lower air damn away from Jeep by hand. You will not be reusing this part

TOOLS REQUIRED

None

FASTENERS

Retain only if you wish to refit later



3. Remove factory Lower Radiator Cover. 3x M6 bolts on front and 2x M8 bolts on back. Use 10mm socket or spanner for front and 13mm for rear

TOOLS REQUIRED

10mm Socket or Spanner
13mm Socket or Spanner

FASTENERS

Retain for reuse



4. Remove factory tie down and or tow points

TOOLS REQUIRED

Socket set

FASTENERS

Discard fasteners



5. Stack Offroad Animal Tow points together as shown with M10 bolts and M10 flat washers.

TOOLS REQUIRED

FASTENERS

- M10x80 Hex bolts (4)
M10 Flat Washers (4)



6. Fit Offroad Animal Tow points as shown on LH and RH side with M10x80 bolts directly into frame of Jeep. Torque down bolts

TOOLS REQUIRED

16mm Socket or Spanner

FASTENERS

M10 x 80 (4)
M10 Flat washers (4)



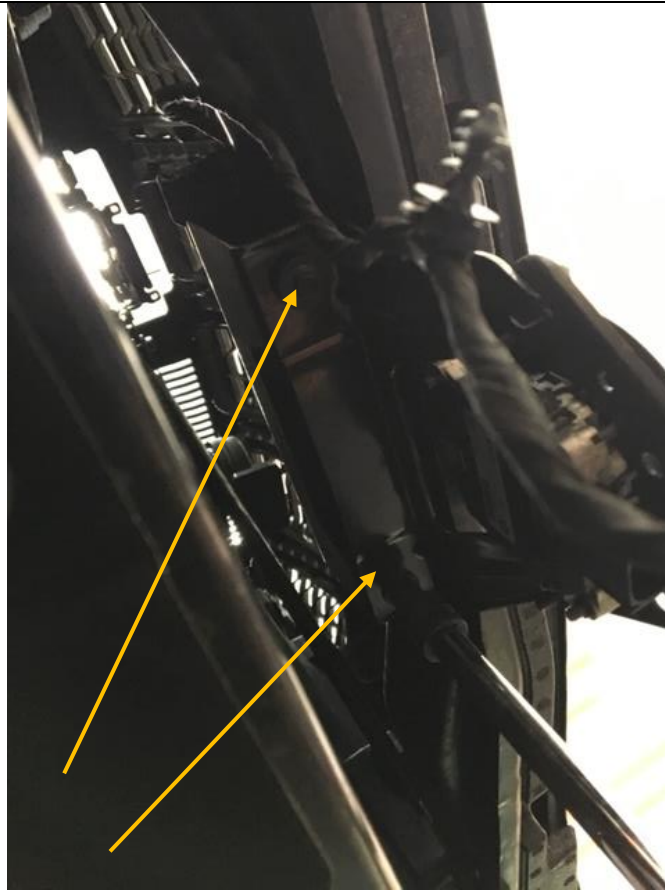
7. If Adaptive cruise control is fitted, unplug loom and pull sensor off posts

TOOLS REQUIRED

Trim tool or flat head screw driver

FASTENERS

Retain factory clips



8. Remove Bracket that holes sensor

TOOLS REQUIRED

8mm Socket

FASTENERS



9. Fit pinch weld to top edge of main plate and wings

TOOLS REQUIRED

FASTENERS



10. Trim edges of pinch weld at edge of plate

TOOLS REQUIRED
Side cutters

FASTENERS

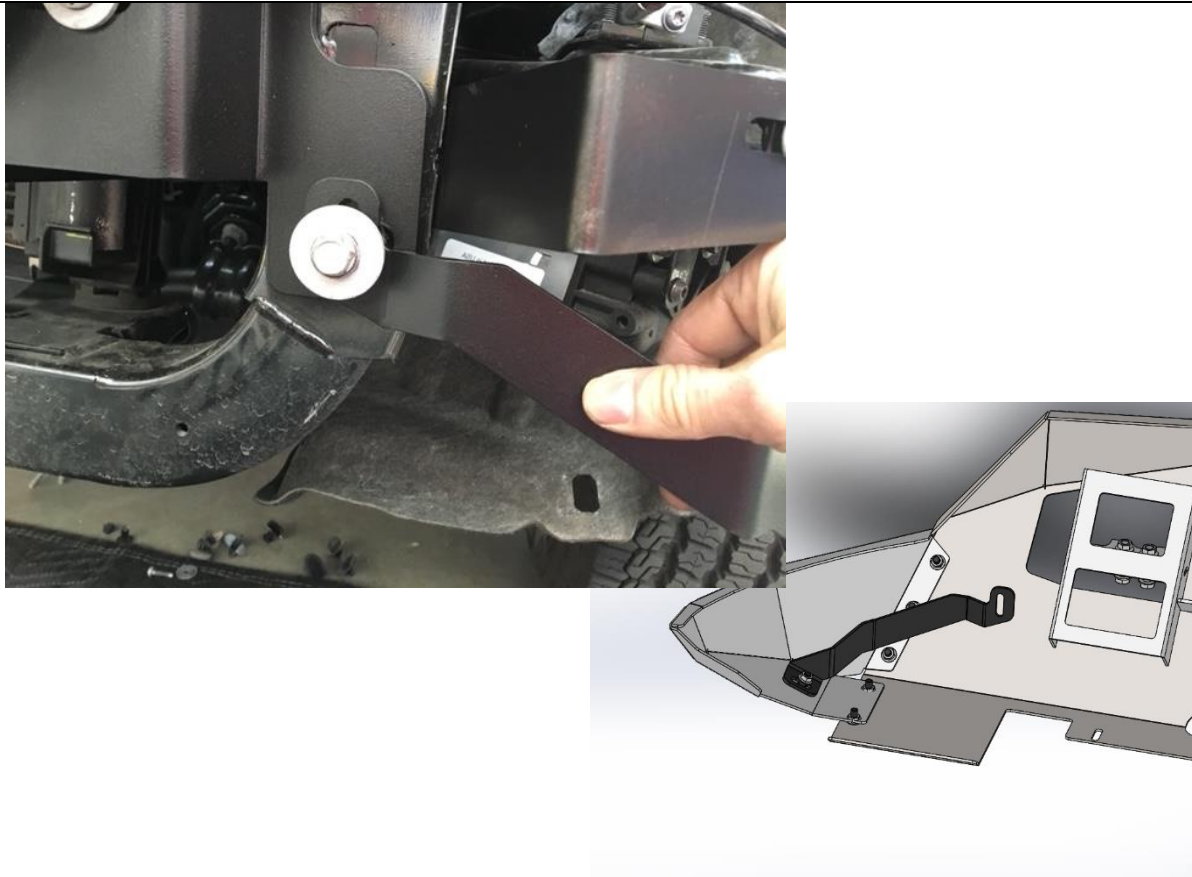


11. Lift Main plate on to Jeep. Windows of welded gusset on main plate fits over tow points like shown.
12. Loosely fit 3 M6 bolts on underside to hold main plate up
13. Use M10 x 40 hex bolts, flat washers and flange nuts through Pre Runner Upper Mounts and secure to tow points. Leave loose for now.

TOOLS REQUIRED

FASTENERS

- Factory m6 bolts
- M10 x 40 hex (4)
- M10 Flat washer (4)
- M10 Flange nut (4)



14. Fit Pre runner wing support as shown in bottom right picture. One end of side wing shown with M8x30 button head cap screw flat washer and flange nut, and one bolt location shown in pic on the left reusing factory bolt
15. Repeat for other side

TOOLS REQUIRED

- 5mm allen key**
- 13mm socket**

FASTENERS

- M8 x30 BHCS black (2)
- M8 flat washer black (2)
- M8 Flange nut (2)



16. Fit pinch weld to top edge of wings like shown

TOOLS REQUIRED

FASTENERS



17. Fit wings to centre like shown. Fit top bolt first by putting bolt through front face and using your fingers behind to hold the flange nut.
18. Repeat for other side

TOOLS REQUIRED
5mm Allen Key

FASTENERS

M8 x 20 BHCS black (2)
M8 flat washer black (12)
M8 flange nut (2)



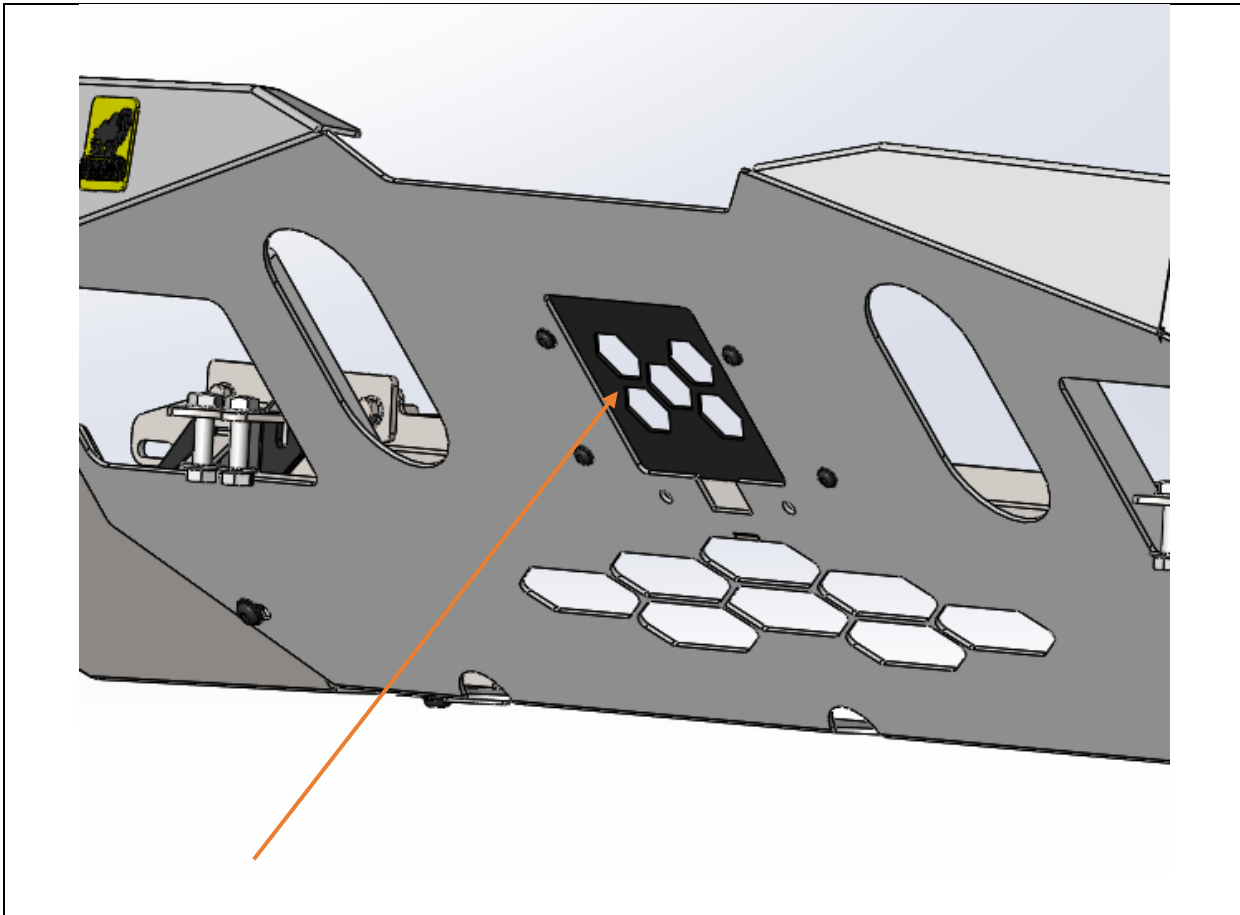
19. You can reach the rest of the nuts on the back of the Pre runner by reaching around from under the bumper. Leave all bolts loose at this moment
20. Repeat for other side

TOOLS REQUIRED

5mm Allen key

FASTENERS

M8 x 20 BHCS black (8)
M8 flat washer black (8)
M8 flange nut (8)



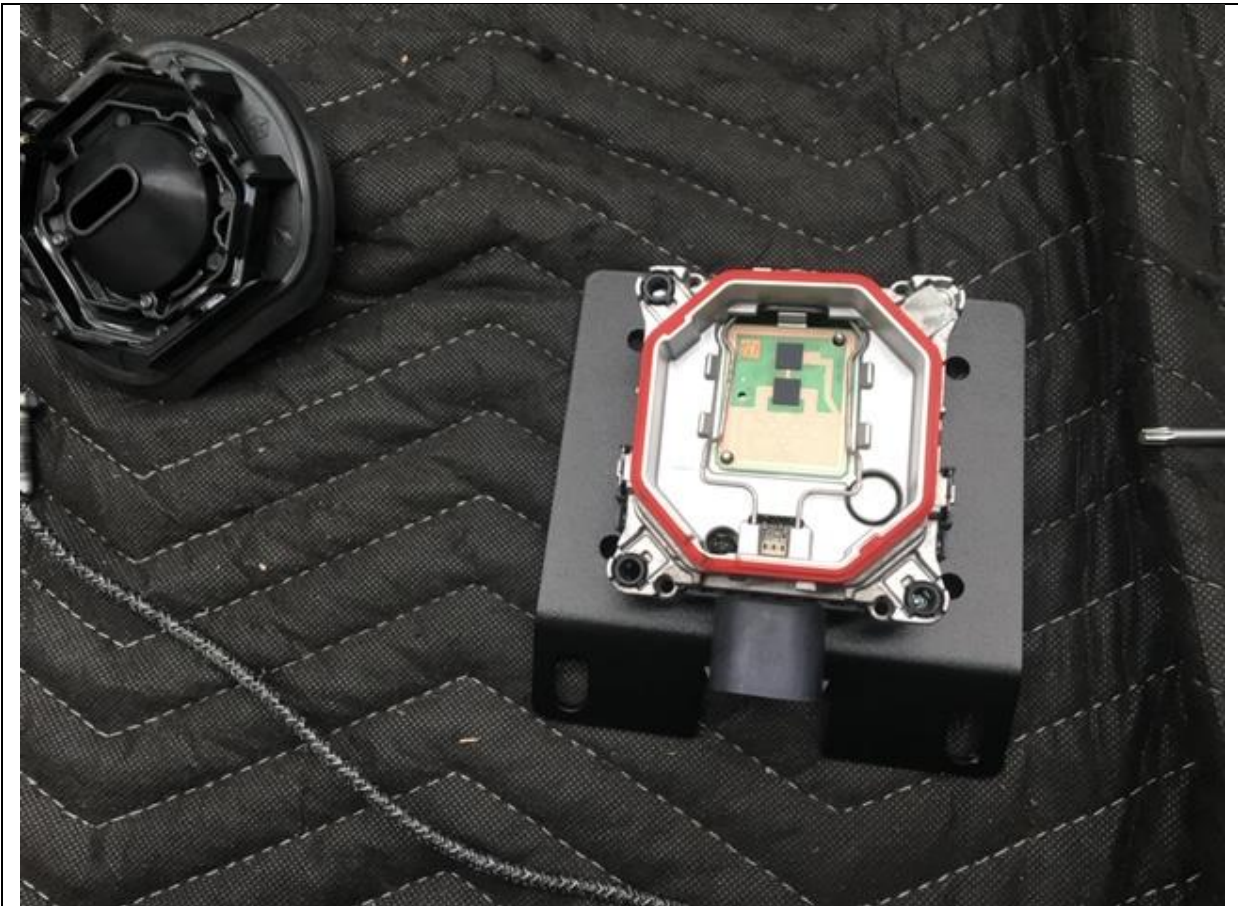
- 21. If no Adaptive cruise control is fitted, then fit ACC cover plate with M8 x 16 button head cap screws (black zinc), flat washers and flange nuts
- 22. Otherwise skip to next step

TOOLS REQUIRED

4mm Allen Key

FASTENERS

M6 x 16 BHCS black (4)
M6 flat washer black (4)
M6 flange nut (4)



- 23. If you have Adaptive Cruise control you will need optional Offroad Animal Part “ PR-JGC-WK2-14-ASM3”
- 24. Fit Radar sensor to Acc Mount Wk2 plate (**use plate with large circle cut in middle**) with supplied M5 x 30 pan head screws in optional kit. This will involve using a flat screw driver to remove the outside cover and remove factory adjusting screws and replace with supplied M5x30 Pan heads

TOOLS REQUIRED

Phillips head screw driver

FASTENERS

M5 x 30 Pan head (4)



25. Feed Sensor and plate through Main plate and secure to main plate with supplied M8 x 30 Hex bolts, flat washers and flange bolts from optional kit
26. Ensure sensor is facing forward and straight ahead. If pointing down or up it will not function properly. Adjust till it's pointing straight ahead. A test drive can confirm this.

TOOLS REQUIRED

13mm Socket or spanner

FASTENERS

**M8 x 30 Hex bolt (2)
M8 flat washer (2)
M8 flange nut (2)**



27. Secure ACC cover to main plate with M6 x 16 button head cap screws washers and flange nuts

TOOLS REQUIRED
4mm Allen key

FASTENERS

M6 x 16 BHCS black (4)
M6 flat washer black (4)
M6 flange nut (4)



- 28. Torque all bolts
- 29. If fitting and Offroad Animal Nudge bar you can do so now as shown with bracket B-0297R and B-0297L
- 30. Note you must use a soft shackle or D shackle instead of a bow shackle if running the nudge bar**

TOOLS REQUIRED
16mm spanner or socket
5mm Allen Key

FASTENERS



31. If your Jeep is equipped with parking sensors and they are going off as they see the new bumper you can fix this by adding a cable tie to the slot that originally holds the lower air damn being pointed to in the picture. Use the cable tie to pull this side of the bumper into the middle of the car. What this does is flex the bumper away from the new pre runner and points it in a slightly new direction.

TOOLS REQUIRED

FASTENERS

Cable ties (not supplied)



- 32. Fit logo plate to bumper. If fitting nudge bar hold off until that is on before doing this step.
- 33. You're done, enjoy the coolness that is your Jeep now.

TOOLS REQUIRED

FASTENERS