



## Jeep Grand Cherokee WK2

MY2011-2019

Nudge Bar

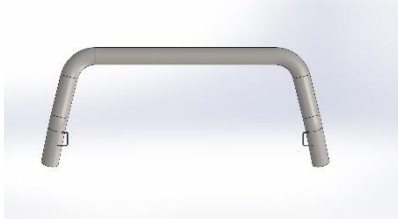

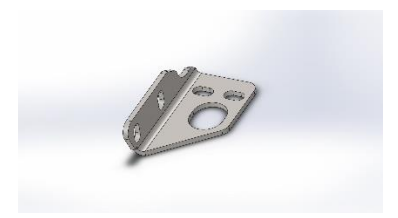
### **IMPORTANT! – READ BEFORE INSTALLATION**

- This product must be installed exactly as per these instructions using only hardware supplied.
- Take a few moments to read instructions thoroughly before beginning work.
- In the event of damage to any component please contact OFFROAD ANIMAL to arrange repair/replacement of components.
- Do not use this product for any vehicle make or model other than that specified on these instructions.
- Do not remove labels from this product.
- This product and its fixings must not be modified in any way unless stated in these fitting instructions.
- The installation of this product is recommended for trained personnel.
- These instructions are correct at time of publication. OFFROAD ANIMAL cannot be held responsible for the impact of any changes subsequently made by the vehicle manufacturer. If you find something has changed please contact us to let us know!
- During installation it is the duty of the installer to check correct operation/clearances of all components.
- If Instructions are to be printed for reference in the workshop, it is recommended that they are printed in colour, for best legibility.
- Estimated Fitting time 1 hour

# PARTS LISTING

**IMPORTANT:** Check all parts are present before beginning work! Contact OFFROAD ANIMAL if something is missing.

## Main Parts – In the Box

Qty	Part Number	Description	Image
1	NB-JGC-WK2-11-ASM1	WK2 NUDGE BAR WELDMENT	
1	RP-JGC-WK2-11-ASMO	RECOVERY POINTS WK2	
1	B-0056R	NUDGE BAR MOUNT RH	
1	B-0056L	NUDGE BAR MOUNT LH	

## Small Parts – Contained in Small Parts Kit Bag

Qty	Part Number	Description
4	M10 x 40	M10 x 40 Hex bolt zinc plate
8	M10 FW	M10 Flat washer
8	M10 FN	M10 Flange nut
4	M10 x 25	M10 x 25 hex bolt zinc plate

## TOOLS REQUIRED

The following tools will be required to install the product.

<b>Hand Tools</b>	<b>Power Tools</b>	<b>Workshop Equipment</b>
10mm Spanner 16mm Spanner 10mm Socket 13mm Socket 16mm Socket Ratcheting Socket Wrench 5mm Allen Key	None	None

## GENERAL WARNINGS

This nudge bar must be fitted on to Offroad Animal tow points.

The tube measures 2.5", any aftermarket clamps that suit 2.5" will suit to mount accessories like lights or antennas.



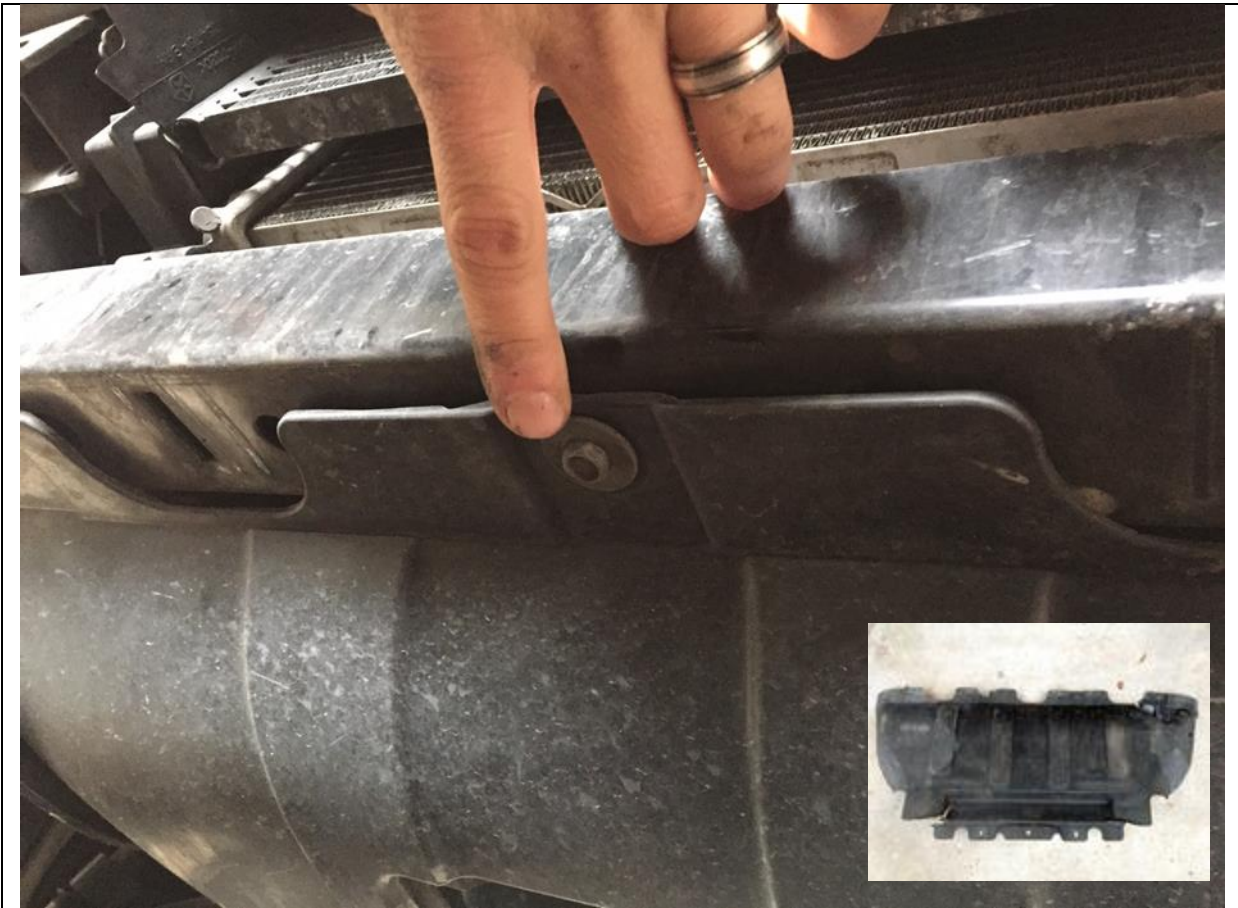
1. First step is to remove the lower air damn fascia. To do this climb under your Jeep and remove all 5 quarter turn clips by hand. Two are tucked up high in each corner and 3 in the middle
2. Once they are removed pull the entire lower air damn away from Jeep by hand.

**TOOLS REQUIRED**

None

**FASTENERS**

Retain



3. Remove factory Lower Radiator Cover. 3x M6 bolts on front and 2x M8 bolts on back. Use 10mm socket or spanner for front and 13mm for rear

**TOOLS REQUIRED**

**10mm Socket or Spanner**  
**13mm Socket or Spanner**

**FASTENERS**

Retain for reuse



4. Remove factory tie down and or tow points

**TOOLS REQUIRED**

**FASTENERS**

Discard fasteners



5. Stack Offroad Animal Tow points together as shown with M10 bolts and M10 flat washers.

**TOOLS REQUIRED**

**FASTENERS**

M10x80 Hex bolts (4)  
M10 Flat Washers (4)



6. Fit Offroad Animal Tow points as shown on LH and RH side with M10x80 bolts directly into frame of Jeep. Torque down bolts

**TOOLS REQUIRED**

**16mm Socket or Spanner**

**FASTENERS**

M10 x 80 (4)  
M10 Flat washers (4)





7. Locate clearance windows as shown in lower air damn.

**TOOLS REQUIRED**

**FASTENERS**



8. Push out panels to allow tow points to pass through. If yours do not push out, you will need to cut an access window in this area

**TOOLS REQUIRED**

**FASTENERS**



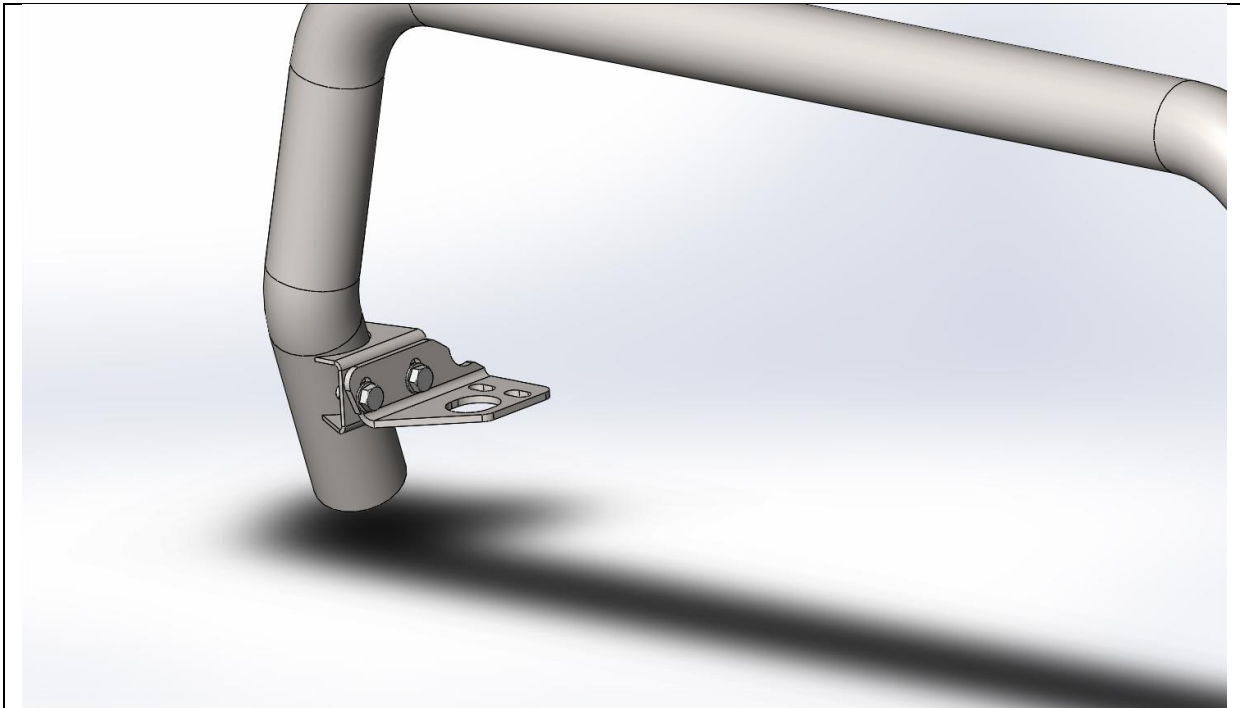
9. Refit lower skid and air damn with factory hardware.

**TOOLS REQUIRED**

10mm spanner or socket  
13mm spanner or socket

**FASTENERS**

Factory hardware

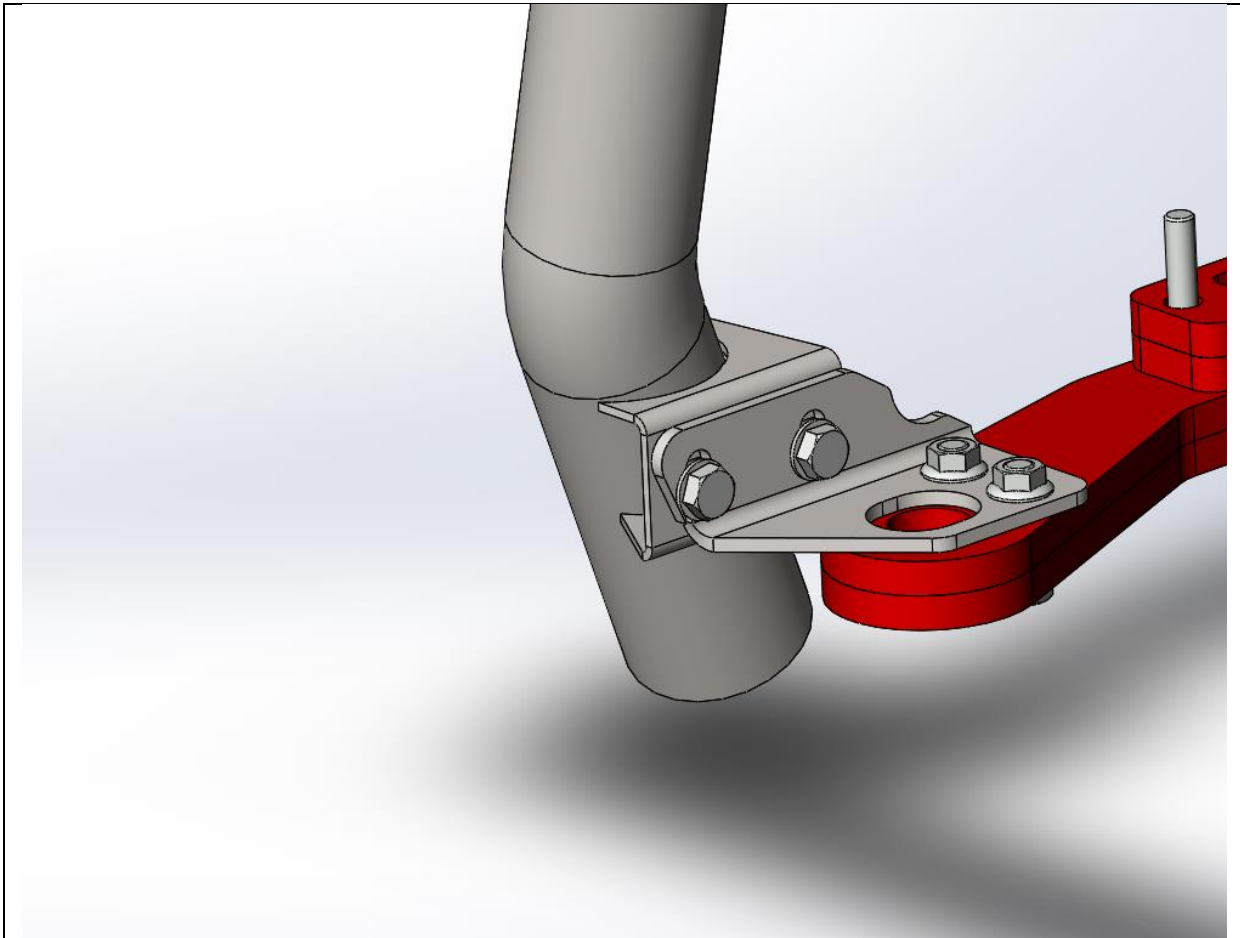


- 10. Loosely fit Mount brackets to nudge bar with M10 x 25 Hex bolts, washers and flange nuts
- 11. Repeat for other side

**TOOLS REQUIRED**

**FASTENERS**

- M10 x 25 Hex bolt (4)
- M10 Flat washer(4)
- M10 Flange nut (4)



12. Put nudge bar on to tow points as shown. Feed mounting bolts up from underneath and secure with flange nuts.
13. Repeat for other side

**TOOLS REQUIRED**

**16mm Spanner or socket**

**FASTENERS**

M10 x 40 Hex bolts (4)  
M10 Flat Washer (4)  
M10 Flange nut (4)



14. Position the nudge bar, if you have forward parking sensors you will need to pivot the top of the nudge bar back as far as possible towards the Jeep, and lift it as high as it will go. Then torque down bolts

**TOOLS REQUIRED**

**16mm socket and spanner**

**FASTENERS**



15. You're now done. Fill free at add clamps to the nudge bar for mounting accessories.

**TOOLS REQUIRED**

**FASTENERS**