

## Jeep Grand Cherokee WK2

MY2014-2016

### Hidden Winch Mount

#### **IMPORTANT! – READ BEFORE INSTALLATION**

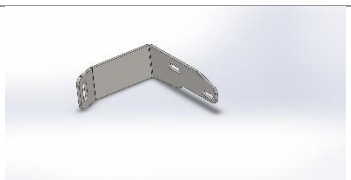
- When installed in accordance with these instructions, the front protection bar does not affect the operation of the vehicles SRS airbags.
- This product must be installed exactly as per these instructions using only hardware supplied.
- Take a few moments to read instructions thoroughly before beginning work.
- In the event of damage to any component please contact OFFROAD ANIMAL to arrange repair/replacement of components.
- Do not use this product for any vehicle make or model other than that specified on these instructions.
- Do not remove labels from this product.
- This product and its fixings must not be modified in any way unless stated in these fitting instructions.
- The installation of this product is recommended for trained personnel.
- These instructions are correct at time of publication. OFFROAD ANIMAL cannot be held responsible for the impact of any changes subsequently made by the vehicle manufacturer. If you find something has changed please contact us to let us know!
- During installation it is the duty of the installer to check correct operation/clearances of all components.
- If Instructions are to be printed for reference in the workshop, it is recommended that they are printed in colour, for best legibility.
- ESTIMATED INSTALL TIME: 3 hours with fitting winch

# PARTS LISTING

**IMPORTANT:** Check all parts are present before beginning work! Contact OFFROAD ANIMAL if something is missing.

## Main Parts – In the Box

Qty	Part Number	Description	Image
1	HW-JGC-WK2-14-ASM2L	HIDDEN WINCH MOUNT BRACKET LH	
1	B-0055	HIDDEN WINCH MOUNT CONTROLLER MOUNT	
1	B-0057R	SUB SUPPORT WK2 WINCH MOUNT RH	
1	B-0052	WINCH CRADLE WK HIDDEN	
1	B-0057L	SUB SUPPORT WK2 WINCH MOUNT LH	
2	P-0014	WK2 RADIATOR BRACE	
1	HW-JGC-WK2-14-ASM2R	HIDDEN WINCH MOUNT BRACKET RH	

<b>1</b>	B-0087	AIR SUSPENSION BRACKET	
----------	--------	------------------------	---

### Small Parts – Contained in Small Parts Kit Bag

Qty	Part Number	Description
<b>10</b>	M10 X 30	M10 X 30 HEX BOLT 8.8 ZINC PLATE
<b>10</b>	M10 FN	M10 FLANGE NUT
<b>10</b>	M10 FW	M10 FLAT WASHER
<b>3</b>	M6 X 20	M6 X 20 HEX BOLT 8.8 ZINC PLATE
<b>3</b>	M6 FN	M6 FLANGE NUT
<b>3</b>	M6 FW	M6 FLAT WASHER

## TOOLS REQUIRED

The following tools will be required to install the product.

Hand Tools	Power Tools	Workshop Equipment
10mm Spanner 13mm Spanner 15mm Spanner 16mm Spanner 4mm Allen Key 5mm Allen Key 10mm Socket 13mm Socket 16mm Socket Ratcheting Socket Wrench Flat head screw driver or Pry Tool 3mm drill bit	Power drill	None

## GENERAL WARNINGS

Take Care not to lose factory hardware, as some will be reused

Read all safety precautions with winch before use, and if you're not experienced take a training course



1. First step is to remove the lower air damn fascia. To do this climb under your Jeep and remove all 5 quarter turn clips by hand. Two are tucked up high in each corner and 3 in the middle
2. Once they are removed pull the entire lower air damn away from Jeep by hand. You will not be reusing this part

**TOOLS REQUIRED**

**None**

**FASTENERS**

Retain only if you wish to refit later



3. Next step is to remove the rest of the front bumper. Start with bonnet/hood open and pry out two clips shown with trim tool or flat head screw driver

**TOOLS REQUIRED**

Trim tool or flat head screw driver

**FASTENERS**

Retain factory clips





4. At the wheel arch on both sides you will need to pry out 2 plastic rivets. You can also drill out the centre of the rivet if you're struggling to pry it out.
5. Remove screw shown with 10mm socket or spanner

**TOOLS REQUIRED**  
Trim tool, or flat head screw driver  
10mm socket or spanner

**FASTENERS**  
Discard plastic rivets



6. Pull factory flare away from bumper, using a flat head screw driver release at least 2 of the push in clips on top edge being careful not to break them as you pull the flare away from the body

**TOOLS REQUIRED**

**Flat head screwdriver**

**FASTENERS**





7. Pull the edge of the bumper away from the body

**TOOLS REQUIRED**

**FASTENERS**



- 8. Lifting the top section ever so slightly you can release clips holding in the top section and pull the remainder of the bumper away

**TOOLS REQUIRED**

**FASTENERS**

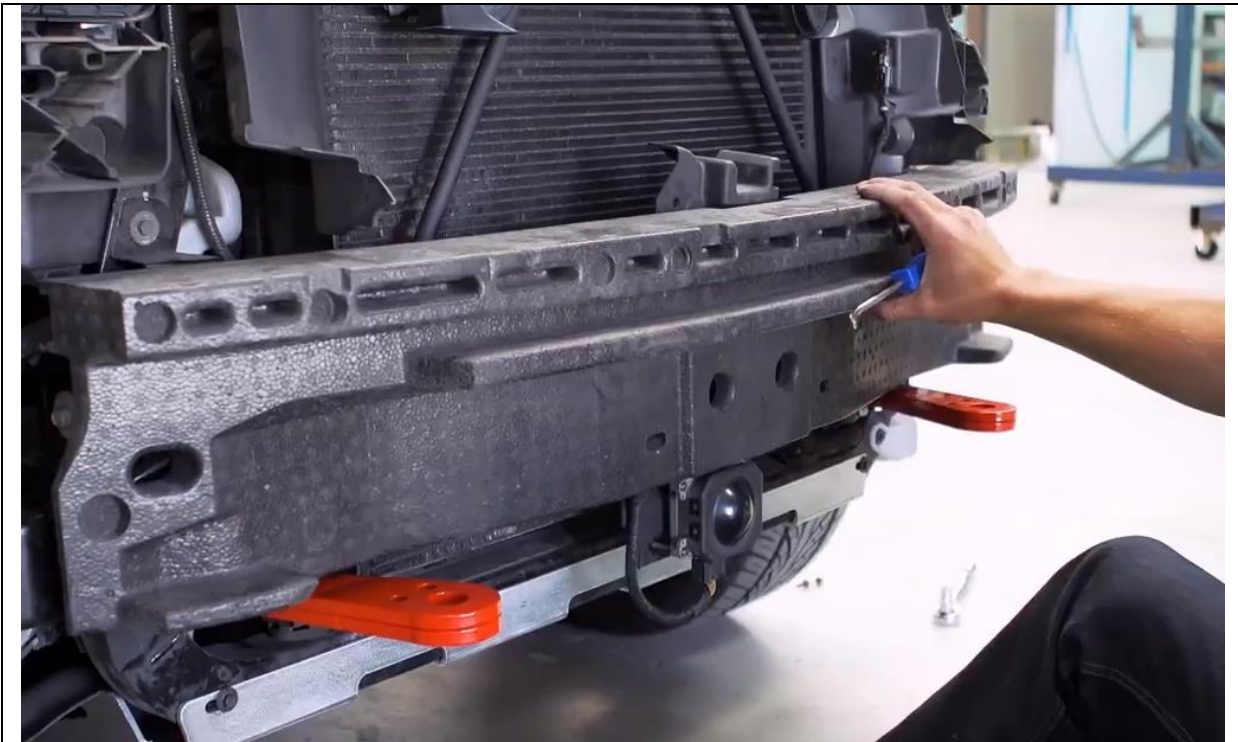


9. Pull out 2 plastic Christmas tree clips holding foam in

**TOOLS REQUIRED**

Trim tool, or flat head screw driver

**FASTENERS**

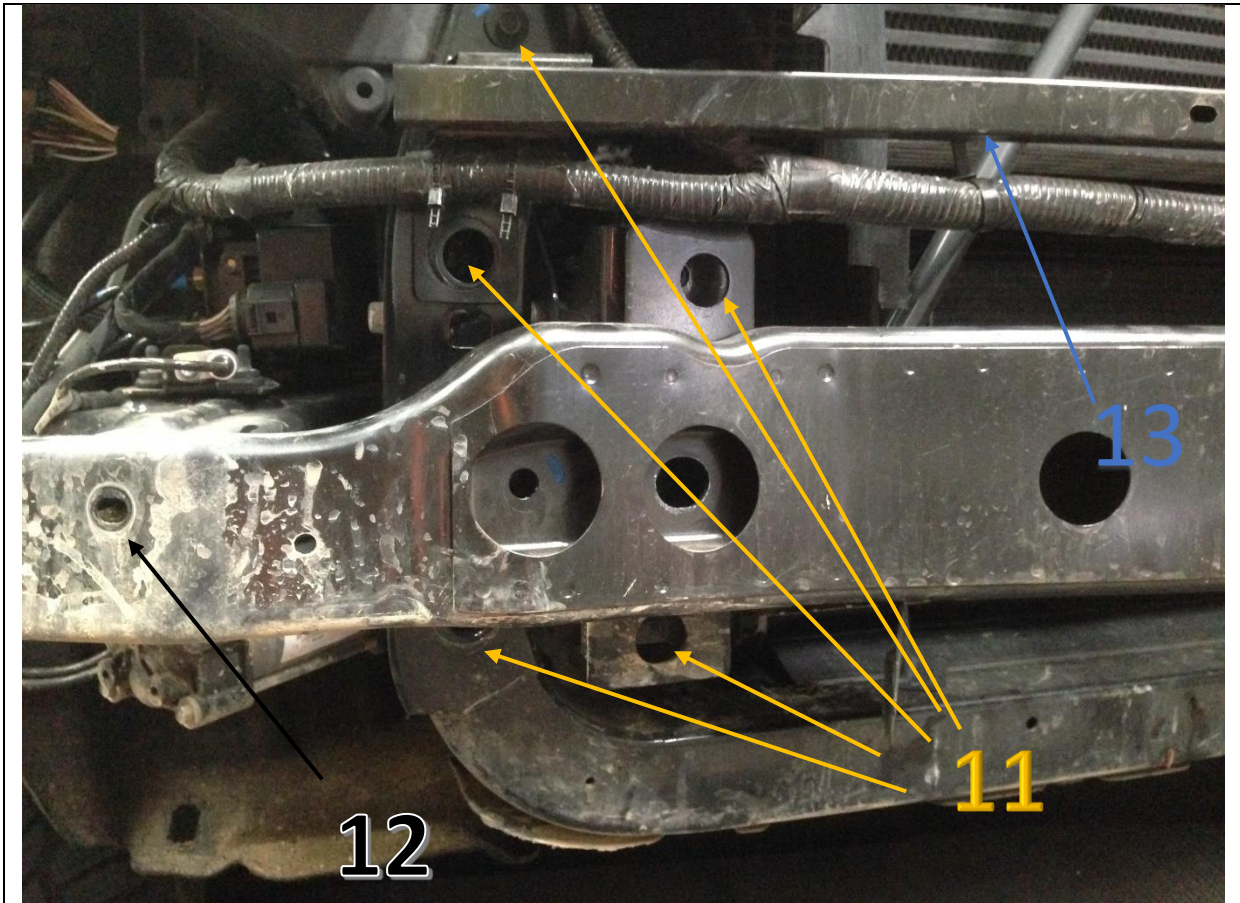


10. Pull foam insert off

**TOOLS REQUIRED**

**FASTENERS**





11. Remove bumper reinforcement by removing 8 x M8 bolts (4 per side with 13mm tool) and 2 x M6 bolts with 10mm tool
12. If equipped with air suspension remove 2 flange nuts holding compressor onto bumper reinforcement
13. Using trim tool or similar remove all loom securing keepers holding wiring onto bumper reinforcement

**TOOLS REQUIRED**

- 10mm spanner or socket**
- 13mm spanner or socket**
- Trim tool or flat head screw driver**

**FASTENERS**

Retain all fasteners, some will be reused

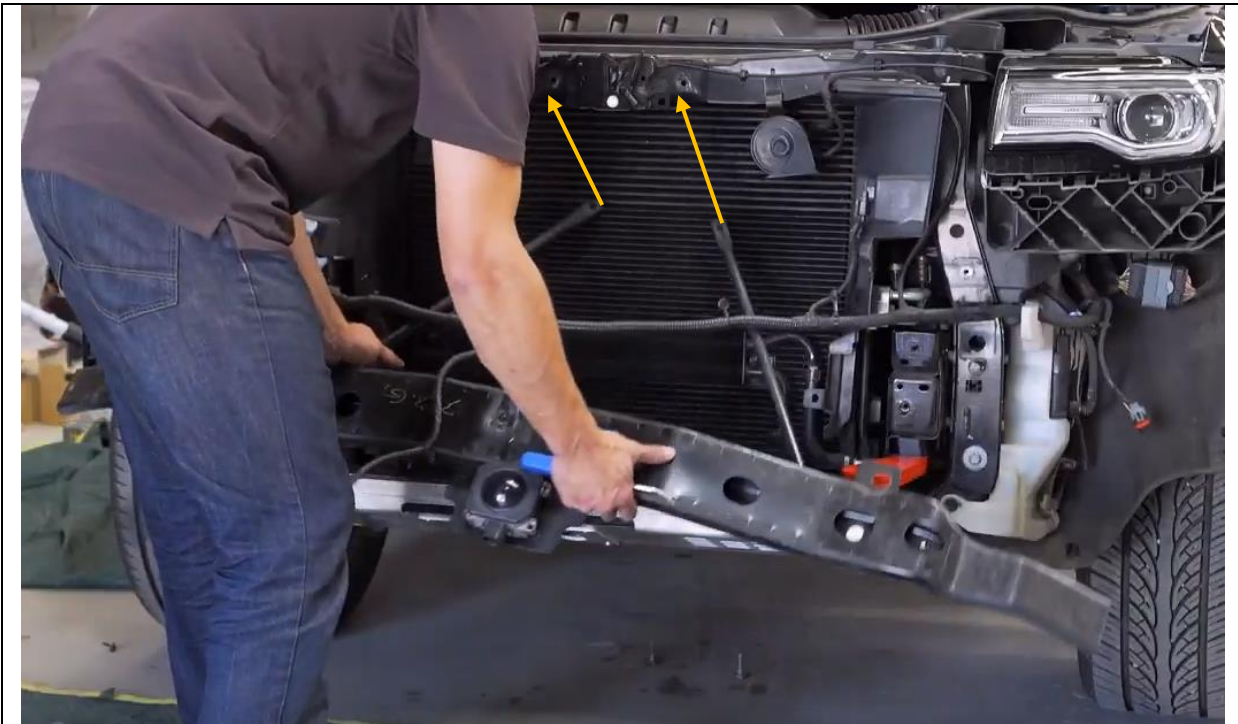


14. If Adaptive cruise control is fitted, unplug loom and pull sensor off posts

**TOOLS REQUIRED**

**FASTENERS**





15. Remove 2x screws with 13mm tool holding round support bars from top of bonnet support then remove entire reinforcement bar.

**TOOLS REQUIRED**  
13mm socket or spanner

**FASTENERS**  
Retain for reuse



- 16. If vehicle is fitted with Air Suspension, fit Air suspension bracket as shown.
- 17. If no air suspension fitted you can discard this bracket or send it back to Offroad Animal and we'll send you a hat

**TOOLS REQUIRED**  
**13mm socket or spanner**  
**15mm socket or spanner**

**FASTENERS**  
 Reuse factory hardware



18. Cut tab off shown in picture from both sides

**TOOLS REQUIRED**

Angle grinder or air hacksaw  
or sawzall

**FASTENERS**



19. Place mount on chassis and fit reusing factory M8 bolts

**TOOLS REQUIRED**

**FASTENERS**





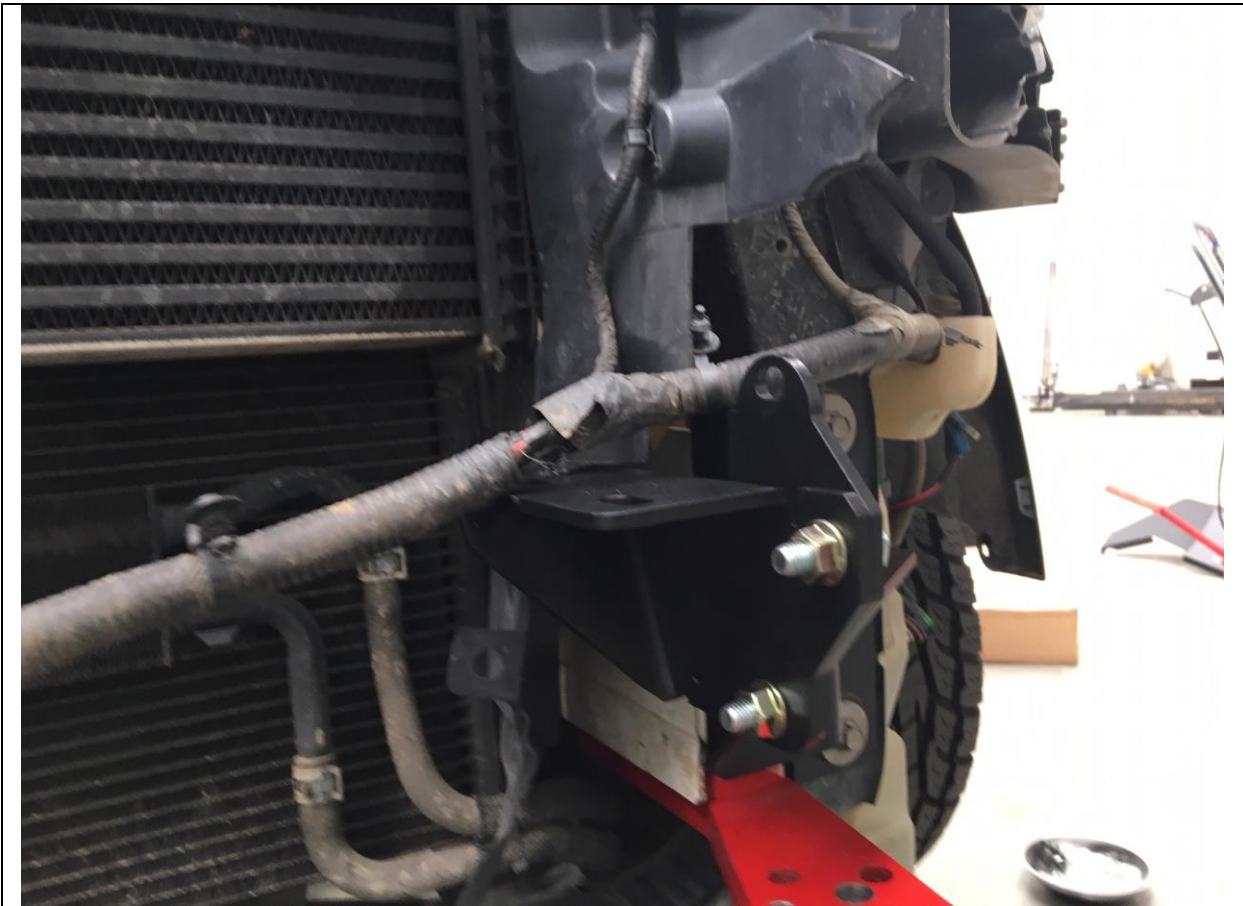
20. Torque up M8 hardware

**TOOLS REQUIRED**

**13mm spanner or socket**

**FASTENERS**

**Factory M8 hardware**



- 21. Fit sub support with M10 bolts, flat washer and flange nuts.
- 22. Repeat for other side

**TOOLS REQUIRED**

**16mm spanner or socket**

**FASTENERS**

M10 x 30 Hex bolt (4)  
M10 Flat washer (4)  
M10 Flange nuts (4)





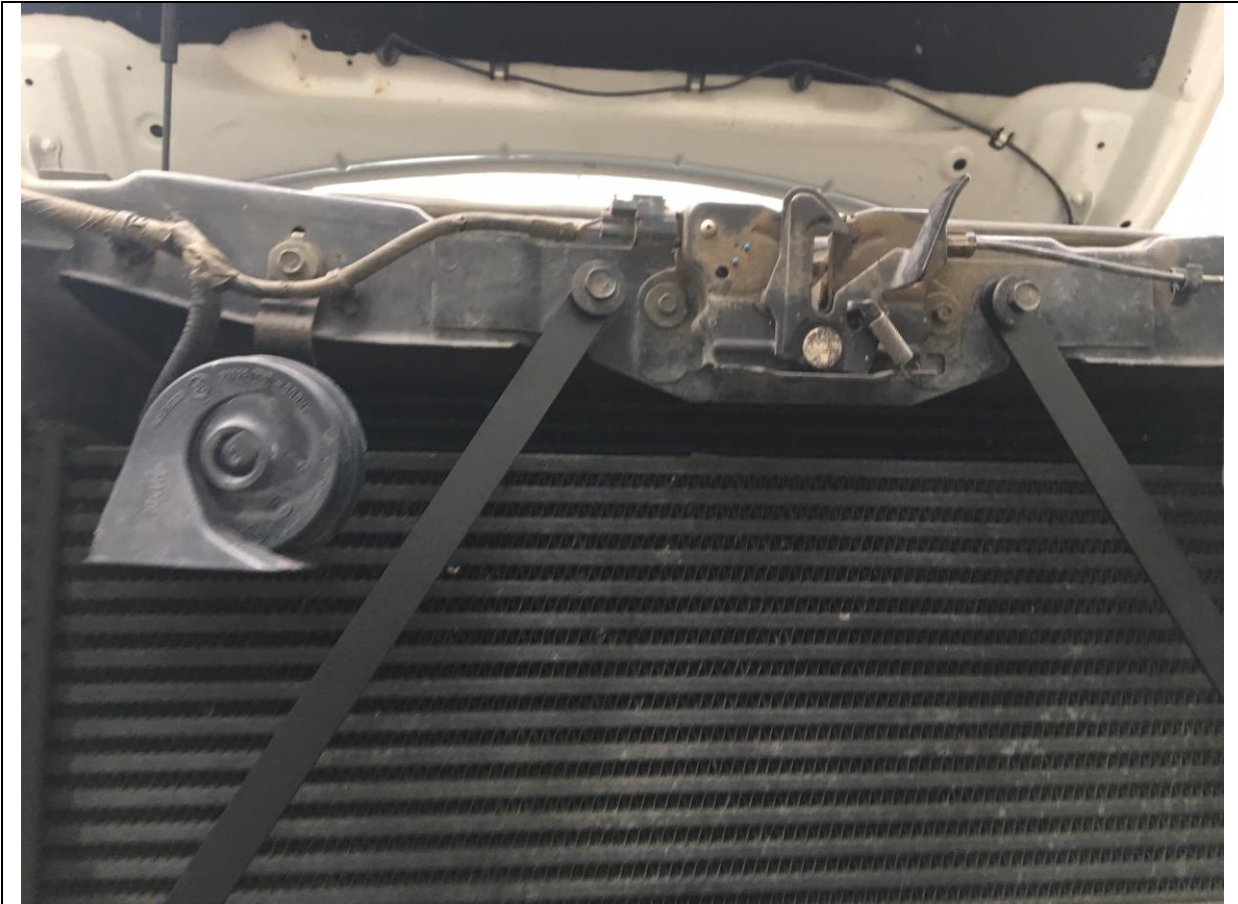
23. Lift winch cradle onto sub supports and secure with M10 x 30 bolts, flat washers and flange nuts

**TOOLS REQUIRED**

**16mm spanner or socket**

**FASTENERS**

**M10 x 30 Hex bolts (6)  
M10 Flat washers (6)  
M10 Flange nuts (6)**



24. Fit radiator braces as shown with factory bolts

**TOOLS REQUIRED**

13mm spanner or socket

**FASTENERS**

Factory bolts



25. Fit lower end of radiator supports to winch cradle with M6 bolts, flat washers and flange nuts

**TOOLS REQUIRED**

**10mm Spanner or Socket**

**FASTENERS**

**M6 x 20 Hex Bolt (2)  
M6 Flat washer (2)  
M6 Flange nut (2)**



26. If you are fitting a winch that does not have an integrated control box (like a Warn Zeon) then you can use the supplied winch controller bracket to mount your control box as shown. Use one existing M10 bolt and then add M6 bolt washer and flange nut  
Skip this step if your winch has an integrated control box

**TOOLS REQUIRED**  
16mm spanner or socket  
10mm spanner or socket

**FASTENERS**  
M6 x 20 Hex bolt (1)  
M6 flat washer (1)  
M6 flange nut (1)





- 27. Lift winch onto winch cradle and secure with hardware supplied with winch
- 28. Ensure the clutch handle is rotated down on the winch so you can access it when the bumper is on

**TOOLS REQUIRED**  
16mm spanner or socket

**FASTENERS**  
Supplied with winch



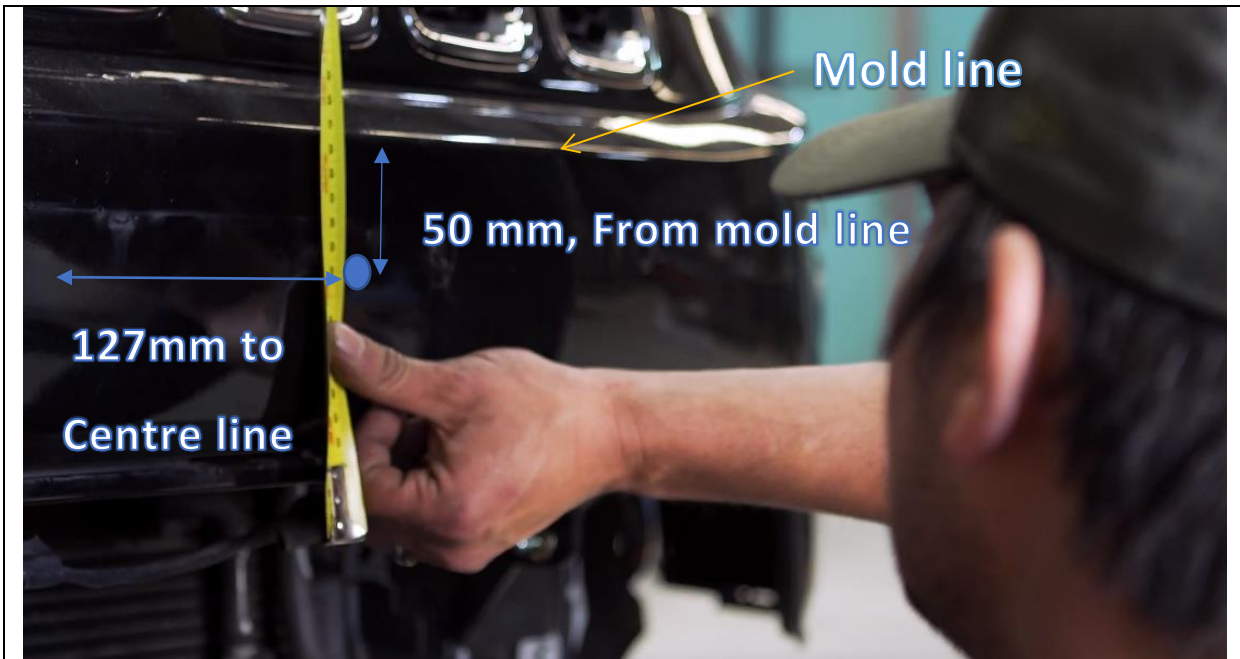
29. Some winches are larger than others and requires you cut off plastic protrusion shown above

**TOOLS REQUIRED**

**Angle Grinder or air hacksaw**

**FASTENERS**





30. Mark position for fairlead bolt. To do this you will need to mark the centre of the bumper as seen from the centre grill slot. Then measure down from mold line shown in arrow above; 50mm down and 127mm way from centre line.

This new point is a bolt location for the fairlead. Measure 254mm to the other side of the centre line and this is the other mounting hole

Drill a small pilot hole 3mm to check you have the correct position lining up with the winch cradle behind the bumper

**TOOLS REQUIRED**  
Tape Measure  
Marking pen  
3mm Drill Bit  
Power Drill

**FASTENERS**



- 31. Once mounting hole positions are marked, put fairlead up to bumper with mounting holes matching your marks.
- 32. Trace around fairlead with marking pen

**TOOLS REQUIRED**

**Marking pen**

**FASTENERS**



33. Cut out fairlead traced area

**TOOLS REQUIRED**

Jigsaw, air hacksaw, or angle grinder

**FASTENERS**



34. If you desire you can line cut out area with pinch weld

**TOOLS REQUIRED**

**FASTENERS**





35. Refit bumper with factory screws

**TOOLS REQUIRED**

10mm socket or spanner

**FASTENERS**

Factory hardware



36. Fit fairlead with hardware supplied with winch

**TOOLS REQUIRED**

**FASTENERS**





37. If purchased fit number plate flip to bumper. Drill holes and fit with M6 supplier hardware from number plate flip

**TOOLS REQUIRED**

**6mm drill bit**  
**Power drill**

**FASTENERS**

Supplied from Number plate flip  
M6 x 20 hex bolts (2)  
Flat washers (2)  
Flange nuts (2)



38. You're all finished. Enjoy the ability to self-recover

**TOOLS REQUIRED**

**FASTENERS**