



Jeep Grand Cherokee WJ-WG

MY1999-2004

Predator bull bar

IMPORTANT! – READ BEFORE INSTALLATION

- When installed in accordance with these instructions, the front protection bar does not affect the operation of the vehicles SRS airbags.
- This product must be installed exactly as per these instructions using only hardware supplied.
- Take a few moments to read instructions thoroughly before beginning work.
- In the event of damage to any component please contact OFFROAD ANIMAL to arrange repair/replacement of components.
- Do not use this product for any vehicle make or model other than that specified on these instructions.
- Do not remove labels from this product.
- This product and its fixings must not be modified in any way unless stated in these fitting instructions.
- The installation of this product is recommended for trained personnel.
- These instructions are correct at time of publication. OFFROAD ANIMAL cannot be held responsible for the impact of any changes subsequently made by the vehicle manufacturer. If you find something has changed please contact us to let us know!
- During installation it is the duty of the installer to check correct operation/clearances of all components.
- If Instructions are to be printed for reference in the workshop, it is recommended that they are printed in colour, for best legibility.
- Estimated install time: 3 hours

PARTS LISTING

IMPORTANT: Check all parts are present before beginning work! Contact OFFROAD ANIMAL if something is missing.

Main Parts – In the Box

Qty	Part Number	Description	Image
1	FB-JGC-WJ-99-PR-ASM1	WJ Bull bar Predator weldment	
1	FB-JGC-WJ-99-PR-ASM2R	WJ Impact absorber RH	
1	FB-JGC-WJ-99-PR-ASM2L	Wj Impact Absorber LH	
1	B-0030L	Wj Wing brace LH	

1	B-0030R	Wj Wing brace RH			
1	U-0001	WJ under tray			
1	B-0061L	Wj lower brace LH			
1	B-0061R	Wj lower brace RH			
4	NP-COM- M10-190- ASM0	Nut Plate lollypop m10			
1	NPF-COM- SM-ASM0	Number plate flip assembly			

2	ST35 7.5 INCH	Stedi Single row light bar, 7.5"	
1	TB-COM-WJ-PR-ASM1 OPTIONAL PART	Wj top hoop	

Small Parts – Contained in Small Parts Kit Bag

Qty	Part Number	Description
4	M10 x 30	M10 x 30 Hex Bolt Z/p
4	M10 FN	M10 Flange nuts
4	M10 FW	M10 Flat Washer
4	M6x20 bhcs bz	M6 x 20 Button Head Cap screw black zinc
4	M6 FW bz	M6 Flat washer black zinc
4	M6 FN	M6 Flange nut
4	M8 FW BZ	M8 flat washer black zinc
4	M8 x 20 BHCS BZ	M8 x 20 button head cap screw black zinc
4	M8 FN	M8 Flange nut
3	M8 x 20 BHCS	M8 x 20 button head cap screw zp
3	M8 FW	M8 Flat washer
6	M12 x 30	M12 x 30 Hex bolt
6	M12 FW Lrg	M12 Flat washer large
10	M10x40	M10 x 40 Hex Bolt
10	M10 FW	M10 Flat washer
6	M10 FN	M10 Flange Nut
1	ORA logo	Offroad animal logo plate

Small Parts kit for Stealth Top Tube

Qty	Part Number	Description
2	M10 FW	M10 Flat washer
2	M10 x 30	M10 x 30 Hex bolt zinc plate
2	M10 NY	M10 Nyloc Nut
2	M10 SW	M10 spring washer

TOOLS REQUIRED

The following tools will be required to install the product.

Hand Tools	Power Tools	Workshop Equipment
Allan keys 4,5mm Sockets or Spanners 10mm + 13mm + 16mm + 18mm Phillips head screw driver Trim tool, or flat head screw driver 12mm drill bit Hammer Box cutter	Angle grinder or air hacksaw Power drill	Paint Pen

GENERAL WARNINGS

No warnings for this product



1. You will begin by removing the factory bumper and ensuring you have all components for the bull bar before you begin installation.

TOOLS REQUIRED

FASTENERS



2. To remove factory bumper you will need to undo fasteners on the inside of the wheel well as shown. Do this for both sides

TOOLS REQUIRED

8mm socket

FASTENERS

discard



3. Undo all fasteners holding top of grill on

TOOLS REQUIRED

Trox Drivers

FASTENERS

Retain for later re-use



4. Remove clips on under bumper

TOOLS REQUIRED

Trim tool, or flat head screw driver

FASTENERS

Discard



5. Undue the fasteners through grill

TOOLS REQUIRED

8mm socket

FASTENERS

Retain for later re-use



6. Pull bumper away from Jeep starting at the outer edges

TOOLS REQUIRED

FASTENERS



7. Unplug factory fog light loom for both sides

TOOLS REQUIRED

FASTENERS



8. With a hammer, you will need to fold over the small lip on the inner edge of the front cross member. Just the inside edge not the top or bottom or outside

TOOLS REQUIRED

Hammer

FASTENERS



9. Also flatten area around hole as shown

TOOLS REQUIRED
hammer

FASTENERS



<p>10. Loosely fit impact brackets LH and RH to vehicle using M10 bolts and flange nuts feed up from underneath.</p>	<p>TOOLS REQUIRED</p>
	<p>FASTENERS</p> <p>M10 x 40 hex bolts (6) M10 flat washers (6) M10 Flange nuts (6)</p>



<p>11. Measure the mounting surfaces on the bull bar and ensure you have enough gap between impact absorbers to fit bar on and tighten up the lower bolts. You can then mark 2 holes per side to be drilled as shown.</p>	<p>TOOLS REQUIRED</p> <p>Tape Measure Paint Pen Centre punch</p>
---	---



12. Drill cross member out to 12mm

TOOLS REQUIRED

12mm drill bit and powder drill

FASTENERS



13. Fit impact absorbers back on to the Jeep. After the M10 bolts from the underside are loosely fit, you can feed nut plate up through access holes and feed M10 bolts and flat washer through these.

TOOLS REQUIRED

FASTENERS

M10 x 40 (4)
M10 FW (4)
M10 lollipop nut plates (4)



14. Torque up all bolts on both sides

TOOLS REQUIRED
16mm socket or spanner

FASTENERS



15. If you have a later model WJ/WG you will need to cut the upper part of the grill off the bumper with an air hacksaw, or angle grinder. Do this now then refit the grill

TOOLS REQUIRED

Air hacksaw or angle grinder

FASTENERS

Factory hardware removed earlier



16. Remove bolts on each side as shown

TOOLS REQUIRED

10mm socket or spanner

FASTENERS

Retain factory fasteners for reuse in next step



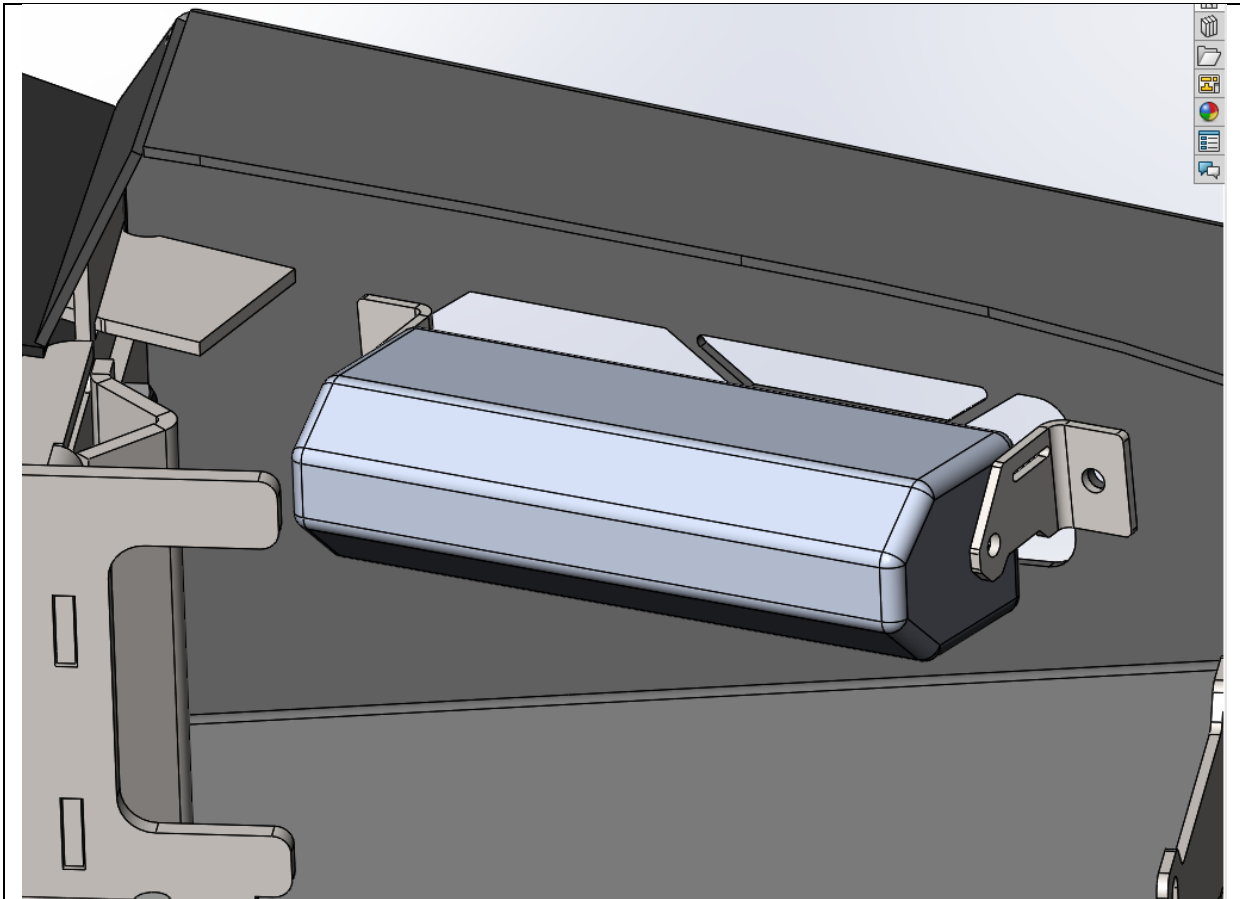
- 17. Fit B-0030L bracket as shown with factory hardware
- 18. Repeat for RH side

TOOLS REQUIRED

10mm socket or spanner

FASTENERS

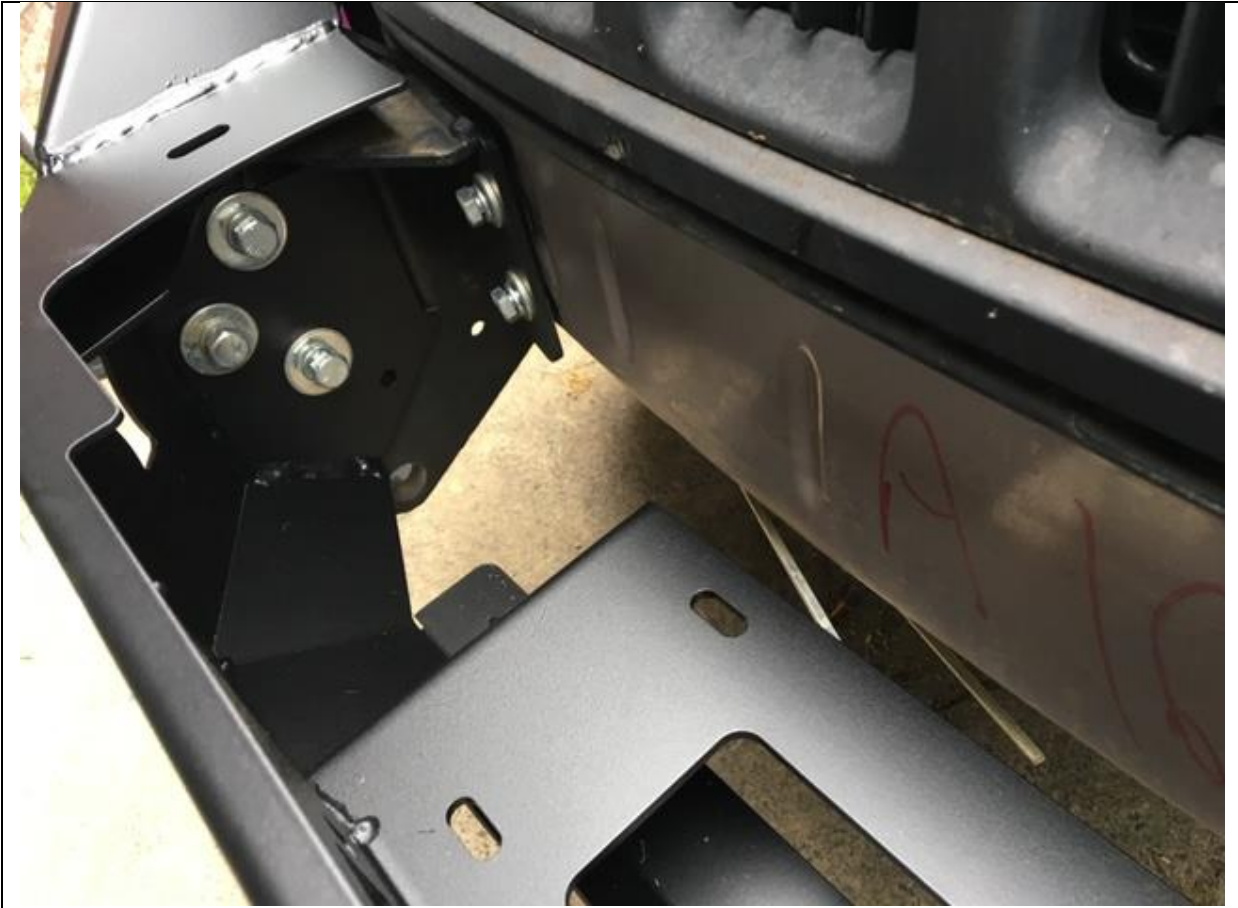
Factory hardware



- 19. Fit LED fog lights into bar with M6 black hardware
- 20. You will need to splice these wires into the factory fog light loom

TOOLS REQUIRED
4mm allen key

FASTENERS
M6 x 20 button head cap screw black (4)
M6 flat washer black (4)
M6 flange nuts (4)



21. With the aid of a friend or lifting table, lift bull bar on to impact absorber mounts and feed through M12 bolts. Position bar around headlights and torque up bolts

TOOLS REQUIRED

18mm socket or spanner

FASTENERS

M12 x 30 hex bolt (6)
M12 Flat washer (6)



- 22. Fit B-0061R up in through bottom of bar and secure wing of bull bar to mount with M10 hardware
- 23. Repeat for other side

TOOLS REQUIRED

16mm spanner or socket

FASTENERS

M10 x 30 Hex bolt (4)
M10 FW (4)
M10 FN (4)



24. Secure edge of Wing to B-0030 bracket on both sides with M8 hardware

TOOLS REQUIRED

5mm allen key

FASTENERS

M8 x 20 (4)
M8 FW (4)
M8 FN (4)



25. If fitting a winch fit fairlead now with hardware supplied with winch

TOOLS REQUIRED
Depends on supplied parts with winch

FASTENERS
Supplied with winch



26. Fit number plate flip as shown

TOOLS REQUIRED

10mm spanner

FASTENERS

M6 Hex bolt (2)
M6 FW (2)
M6 FN (2)



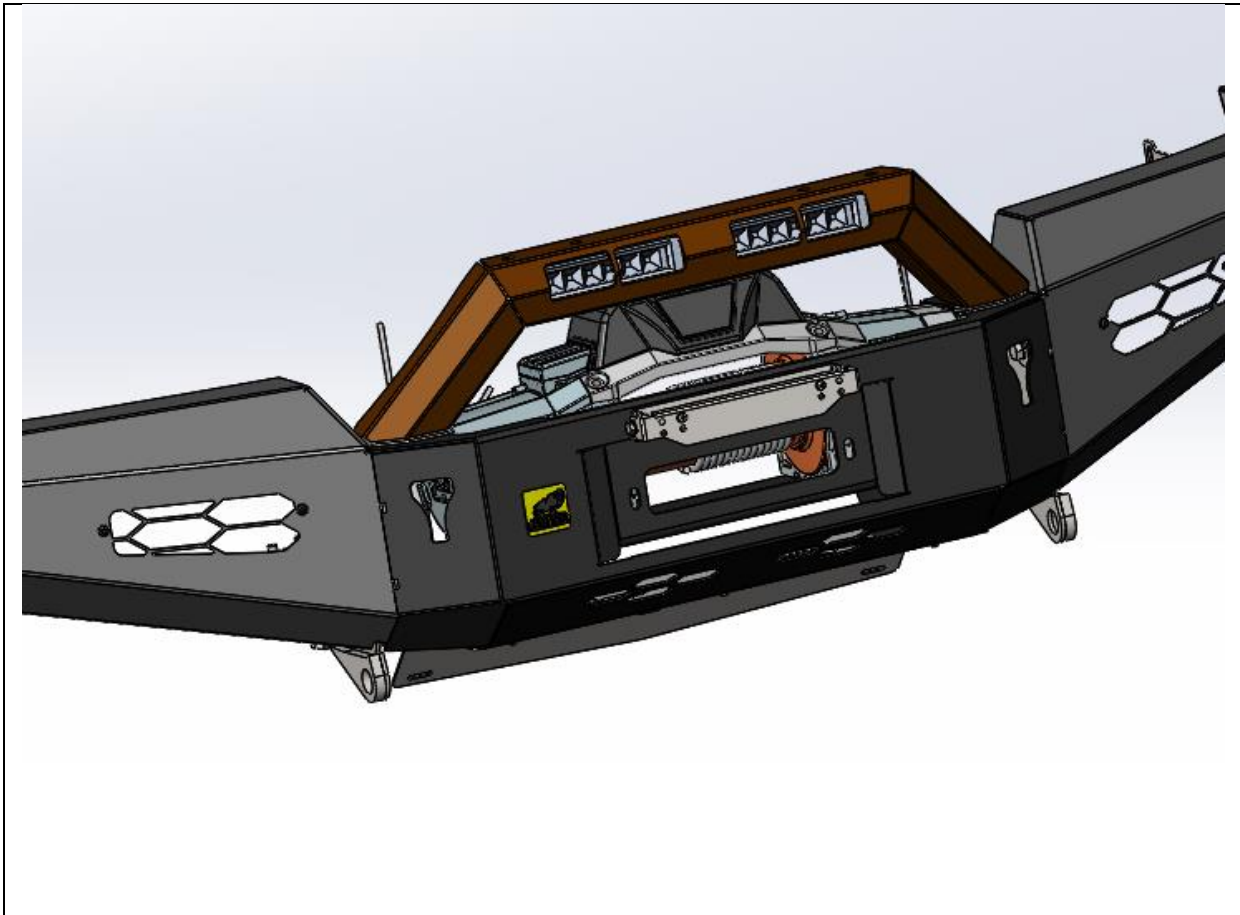
27. Drop winch in and secure with supplied bolts from underneath

TOOLS REQUIRED

16mm spanner and socket

FASTENERS

Supplied with winch



- 28. If fitting optional top hoop do so now with M10 hardware.
- 29. Fit LED lights into top hoop

TOOLS REQUIRED

16mm spanner

FASTENERS

M10 x 30 (2)
M10 FW (2)
M10 NY (2)



30. If a winch is fit run your wires now to the battery, then fit the new skid plate. Use M8 button head cap screws on the bottom of the bar and reuse factory hardware on radiator support to secure the back end of the plate. Torque up bolts.

TOOLS REQUIRED

**10mm socket or spanner,
5mm allen key**

FASTENERS

M8 x 20 BHCS (3)
M8 FW (3)



31. Trim the inner wheel liner with a box cutter and tuck behind wing of bull bar

TOOLS REQUIRED

16mm spanner

FASTENERS

M10 x 30 (2)
M10 FW (2)
M10 NY (2)



32. Refit your number plate and you're all done. Enjoy

TOOLS REQUIRED

FASTENERS