



FORD RANGER PX MY2011 ON ROCK SLIDERS

IMPORTANT! – READ BEFORE INSTALLATION

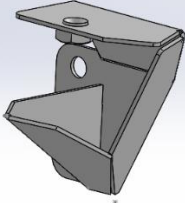
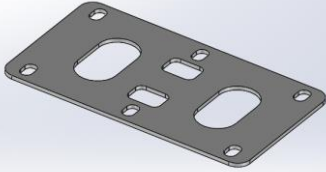
- When installed in accordance with these instructions, the front protection bar does not affect the operation of the vehicles SRS airbags.
- This product must be installed exactly as per these instructions using only hardware supplied.
- Take a few moments to read instructions thoroughly before beginning work.
- In the event of damage to any bar component please contact OFFROAD ANIMAL to arrange repair/replacement of components.
- Do not use this product for any vehicle make or model other than that specified on these instructions.
- Do not remove labels from this product.
- This product and its fixings must not be modified in any way unless stated in these fitting instructions.
- The installation of this product is recommended for trained personnel.
- These instructions are correct at time of publication. OFFROAD ANIMAL cannot be held responsible for the impact of any changes subsequently made by the vehicle manufacturer. If you find something has changed please contact us to let us know!
- During installation it is the duty of the installer to check correct operation/clearances of all components.
- If Instructions are to be printed for reference in the workshop, it is recommended that they are printed in colour, for best legibility.
- Fitting time estimated 1-2 hours

PARTS LISTING

IMPORTANT: Check all parts are present before beginning work! Contact OFFROAD ANIMAL if something is missing.

Main Parts – In the Box

Qty	Part Number	Description	Image
2	E-0002-1800	Slider extrusion - 1800MM	
1	RS-FRA-PX-11-ASM2L	Ranger Slider Front Mount Assy	
1	RS-FRA-PX-11-ASM2R	Ranger Slider Front Mount Assy	
4	RS-FRA-PX-11-ASM3	PX Ranger Slider - Mid / Rear Mount	
4	P-0066	PX Ranger Slider Backing Plate	

2	COM-RS-EC	Slider End Cap	
2	COM-RS-ECM	Slider End Cap	
2	P-0119	Front Mount Brace Plate	

Small Parts – Contained in Small Parts Kit Bag

Qty	Part Number	Description
14	M12 FLAT WASHER	M12 FW
7	M12X125 GR10.9	Bolt Hex, M12X125x1.75, GR10.9 ZP
32	M10 x 25	Bolt Hex, M10X25x[1.5], GR8.8 ZP
32	M10 FLANGE NUT	Flange Nut, M10x1.5 G8.8 ZP
30	M8 NUT	Hex Nut, M8x1.25 G8.8 ZP
20	M8 X 20 BHCS BLACK ZINC	SCREW, BUTTON HEAD CAP, M8X20X1.25 BLACK ZP
34	M8 FLAT WASHER- BLACK ZINC	M8 FW- BLACK ZINC
4	NP-COM-M12-300-ASM0	M12 NUT PLATE 300MM STEM
2	NP-COM-M12-300LP-ASM1	M12 NUT PLATE 300MM STEM LOW PROFILE HEAD
1	M12X110 GR10.9	Bolt Hex, M12X110x1.75, GR10.9 ZP
8	M12 FLANGE NUT	Flange Nut, M12x1.75 G8.8 ZP
6	M12X30	Bolt Hex, M12X30x1.75, GR8.8 ZP
14	M8X20 CAP SCREW	CAP SCREW, M8X20X1.25 GR10.9 ZP
2	OFA-LOGO	OFFROAD ANIMAL METAL LOGO

TOOLS REQUIRED

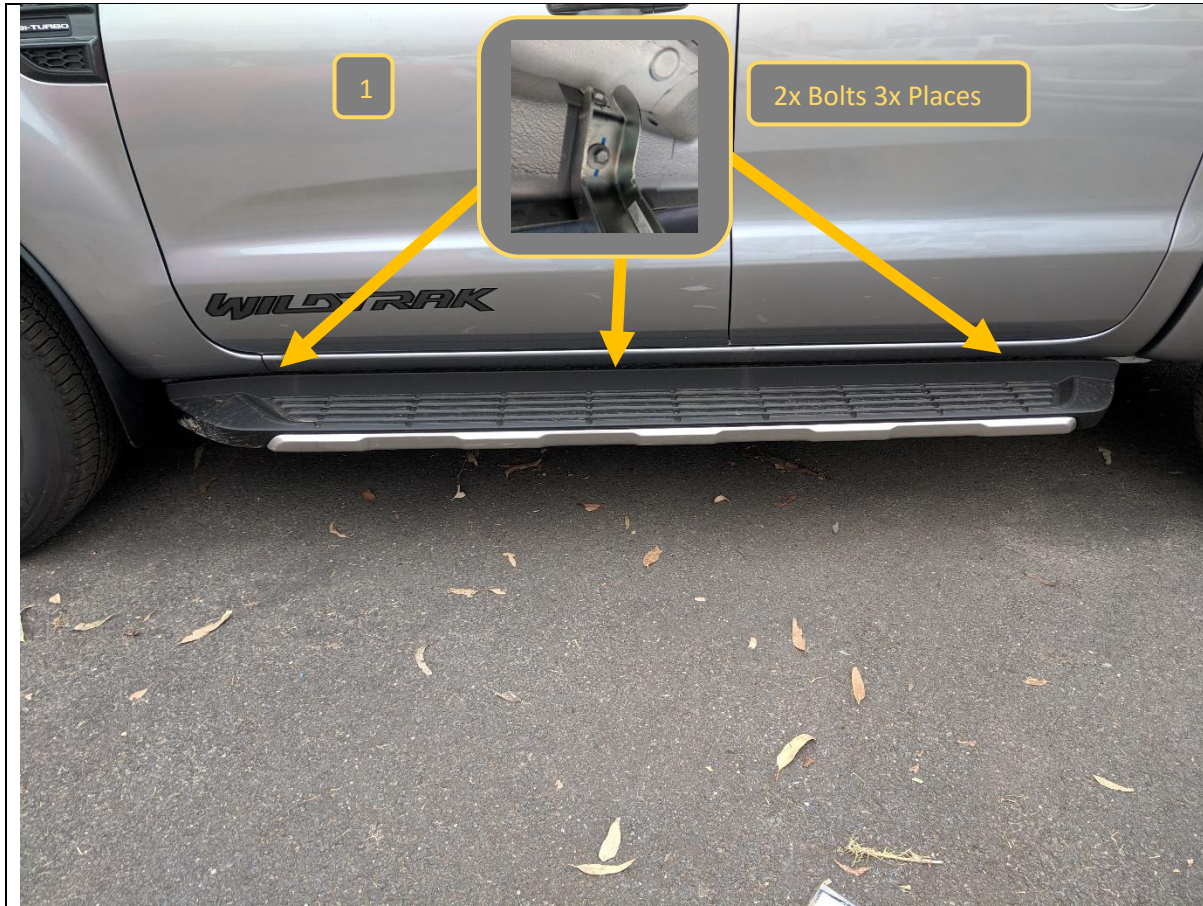
The following tools will be required to install the product.

Hand Tools	Power Tools	Workshop Equipment
Metric Socket Set 8-19mm Socket Extension Bar Metric Spanner Set 10-19mm Torx Drivers T25-T30 Hex (Allen) Key Set 4-6mm Trim Puller Tool Flat Blade Screwdriver set Phillips Head Screwdriver set Utility Knife Side Cutters Pliers	Electric/Air Impact Driver (Optional)	Hydraulic Floor Jack

WORKSHOP SAFETY

It is the responsibility of the installer to always complete works in a safe manner. Make sure the following safety equipment is available and precautions are observed whilst fitting this product.

<p>Hearing Protection</p> 	<p>Always wear ear protection when using power tools.</p>
<p>Eye Protection</p> 	<p>Ensure eye protection is always worn when cutting or drilling.</p>
<p>Manual Handling</p> 	<p>Do not attempt to lift bar assemblies or rock sliders on your own.</p> <p>Always use two people to lift or use mechanical Lifting aid such as hydraulic lifting trolley.</p>
<p>Vehicle Support</p> 	<p>Always ensure vehicle is properly supported when working on it. Do not attempt to fit products whilst suspension work is being carried out. Do not work under a vehicle supported only by a jack.</p>



1. Remove Factory side steps if fitted by removing the 6x Bolts (2 Per mount) securing them to the body using a 12mm socket.
2. Discard Factory steps and bolts.

TOOLS REQUIRED
12mm socket

FASTENERS
6x Factory Flange head Bolts
(per side)

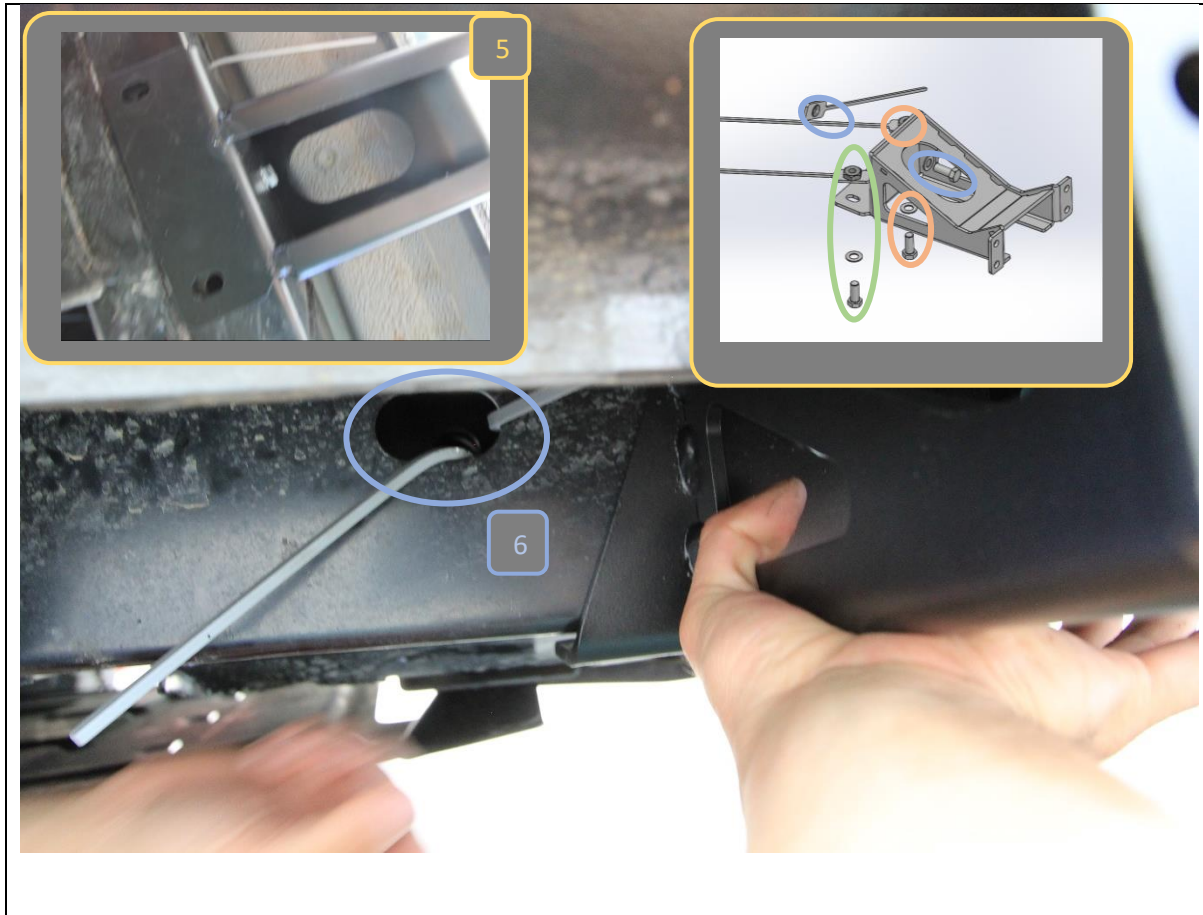


3. Locate features that front mount mounts to. The easiest way to do so is locate the rectangular slot on forward part of chassis closest to the seam weld.
4. Lift front mount up to chassis rail and position against chassis rail using Jack.

TOOLS REQUIRED

Jack

FASTENERS



5. Check to ensure that slots on mount are aligned with holes in chassis rail. Adjust position of mount if required
6. Feed in nut plates, behind chassis using slot in front of mount for access, position nut behind the hole in mount using stem, then secure with M12x30 Bolt and Flat washer from front.
7. First secure front face bolt (Blue). Then remove jack and secure the two bottom mounts using standard nut plate closest to front of car (Green) and short nut plate closest to rear of car (Orange)

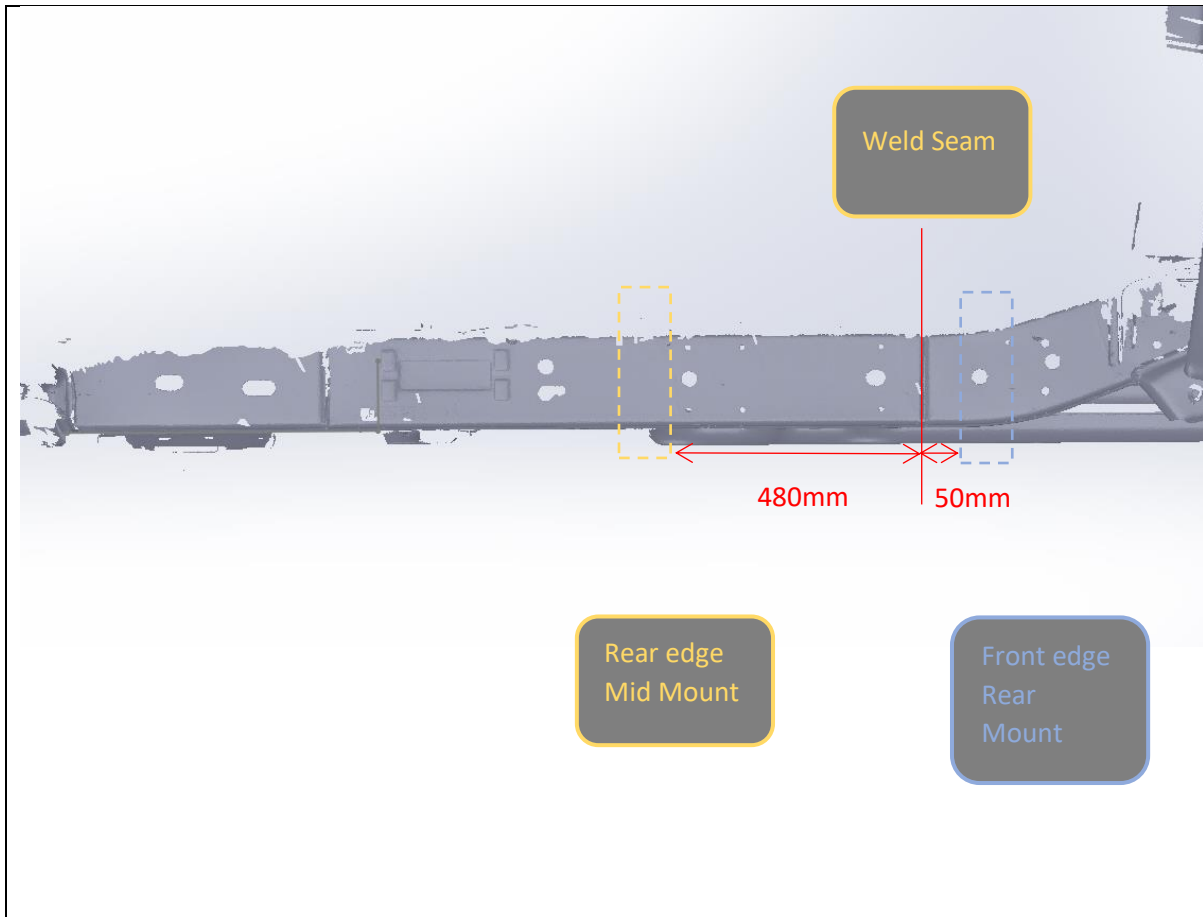
TOOLS REQUIRED

Jack

FASTENERS

3xM12x30 Bolt
2x Standard M12 Nut Plate
1x Short M12 Nut Plate

Per Side



<p>8. Locate and mark the mid and rear mount positions on chassis, as shown in above image</p>	<p>TOOLS REQUIRED</p> <p>Marker</p>
	<p>FASTENERS</p>



9. Prepare mid and rear mounts by pre-inserting the M12x125 Bolt, with flat washer, part way through the top mounting hole.
10. Lift mid / rear mount up to chassis rail and position against chassis in position marked. Ensure that the bolt, inserted earlier goes over the top of the chassis rail.

TOOLS REQUIRED

FASTENERS
M12x125 Bolt
M12 Flat Washer



11. Install the mid / rear mount backing plate, by sliding up against back side of chassis and secure through top bolt from mount.
12. This may require manipulation of the top bolt.
13. Ensure that the plate is beneath any fuel / brake lines and sitting directly against the chassis. Secure with M12 Flange Nut, finger tight only at this stage.

TOOLS REQUIRED

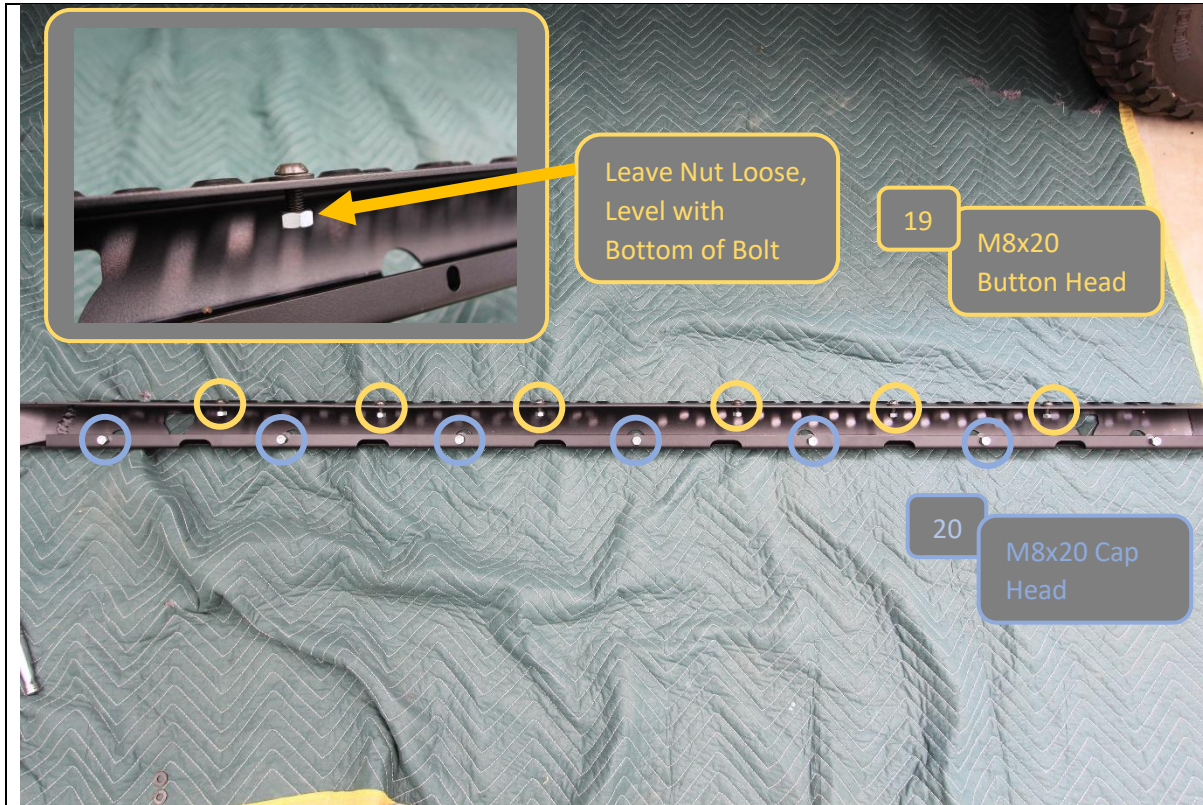
FASTENERS
M12 Flange Nut



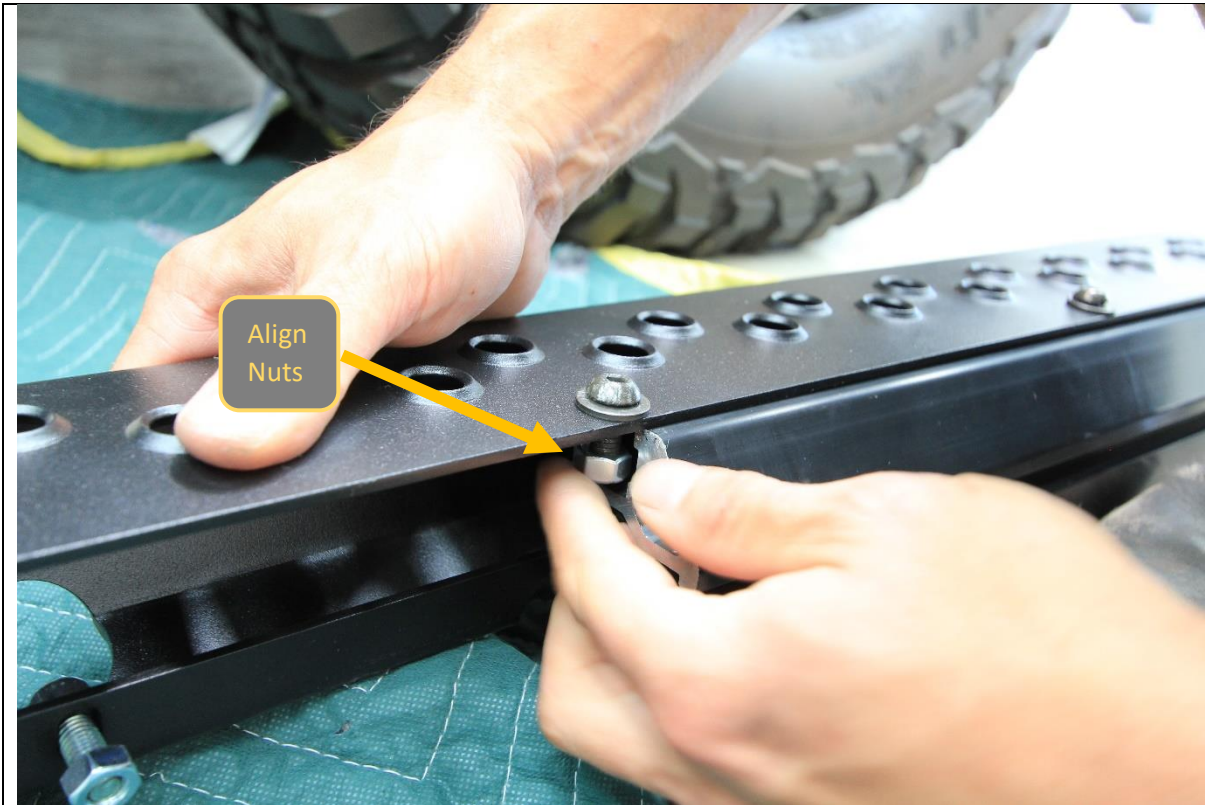
14. Insert the lower M12x125 Bolt and M12 flat washer through both the mount and backing plate
15. Secure with M12 Flange nut, Finger tight only at this stage
16. **Important Note:** For bottom bolt on Rear LHS mount (Adjacent Fuel Tank) Use M12x110 instead of M12x125 to prevent contact with fuel tank.
17. Repeat steps 9-15 for both mid / rear mounts on each side.

TOOLS REQUIRED

FASTENERS
M12x125 or M12x110 Bolt
M12 flat washer
M12 Flange Nut



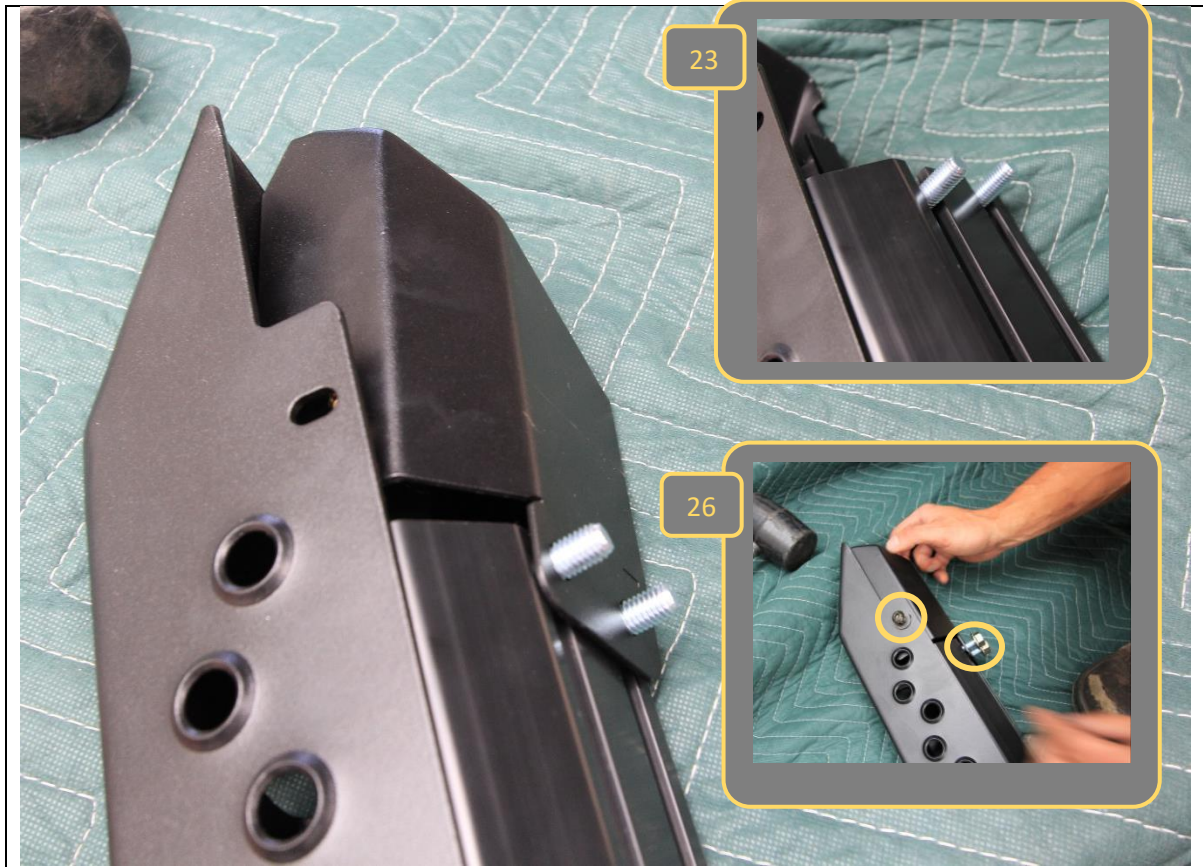
<p>18. Prepare step plate by loosely pre fitting the fasteners to the step</p> <p>19. Use M8x20 black button head screws, black M8 washers and M8 Nuts on 6x locations on top of step as shown</p> <p>20. Use M8x20 cap head screws M8 washers and M8 nuts on 7x locations on bottom side of step.</p>	<p>TOOLS REQUIRED</p>
	<p>FASTENERS</p> <p>6x M8x20 Black Button Head 7xM8x20 Cap Head 13x M8 Black Washer 13x M8 Nut</p>



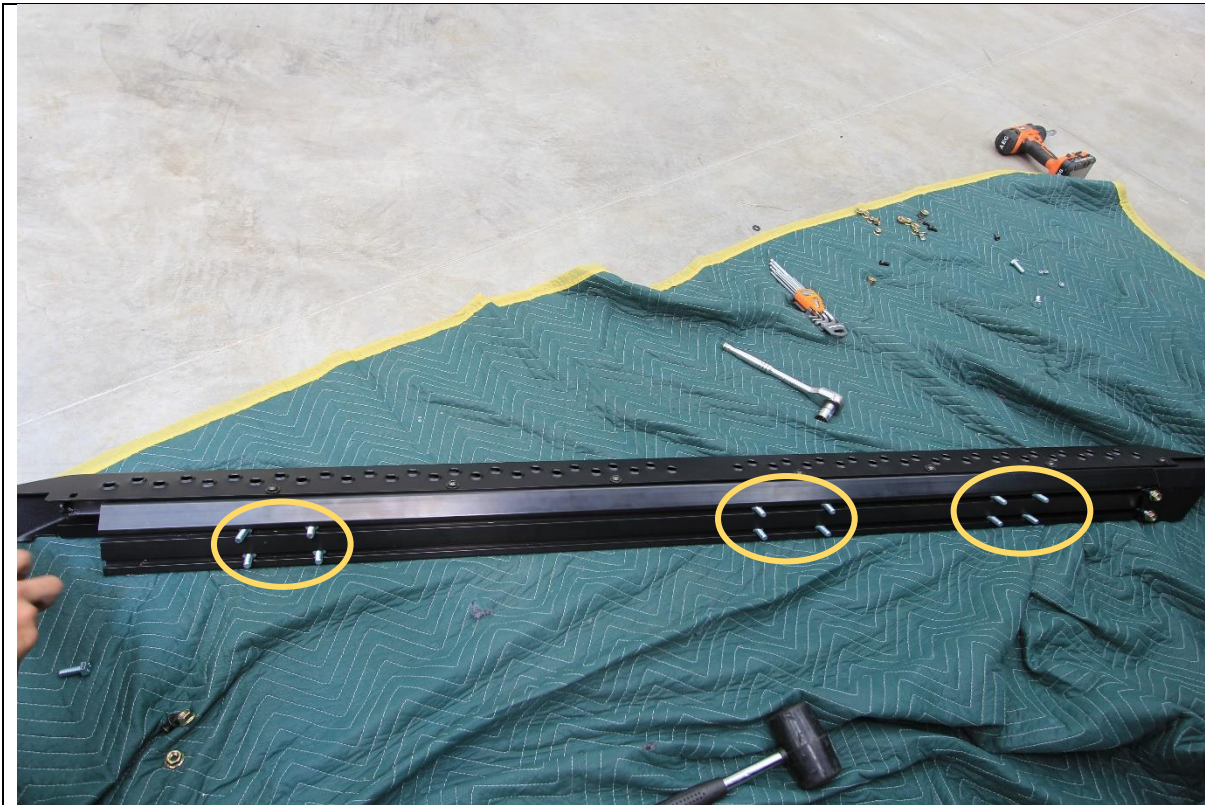
21. Slide the step plate onto the main slider structural extrusion. Align the nuts as they enter the T Slots on the extrusion.
22. Center the Step on the extrusion, by measuring distance from extrusion to tip of step, and adjusting until both sides are equal.

TOOLS REQUIRED

FASTENERS



<p>23. Fit end cap to one end of the extrusion</p> <p>24. First slide 2x M10x25 Hex bolts into the T slots on back side of extrusion.</p> <p>25. Fit end cap over these bolts.</p> <p>26. Secure with M10 flange nuts on T slot bolts and M8x20 bolt in top, through tread plate. End cap should align with end of tread plate if tread plate is centered correctly.</p>	<p>TOOLS REQUIRED</p>
	<p>FASTENERS</p> <p>2x M10x25 Bolts 1x M8x20 Button Head bolt 1xM8 Flat Washer 2x M10 Flange Nut</p>

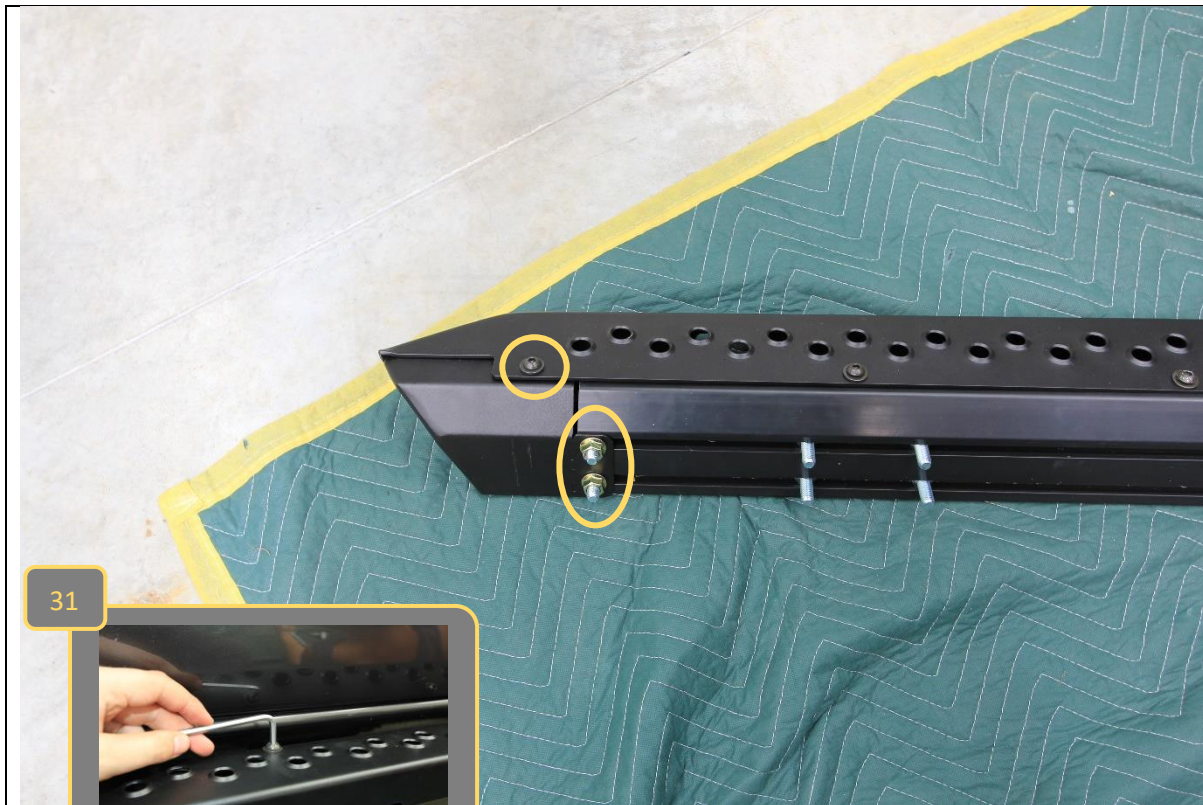


27. Slide the 12x M10x25 Hex bolts into the T slots on back side of extrusion. 6 bolts per slot.

28. Loosely arrange the bolts in 3x groups of 4, in approximate location of mounts, as shown.

TOOLS REQUIRED

FASTENERS



- 29. Fit mirrored end cap to remaining end of slider, using 2x M10x25 hex bolts and M8x20 Button head bolt with flat washer as per previous steps 23-26.
- 30. Check alignment of end caps, End cap should align with edge of tread plate if properly centered. Adjust end cap / tread plate position as required.
- 31. Once happy with alignment tighten all bolts on slider extrusion, using 5/6MM hex key and 15mm spanner.

TOOLS REQUIRED

- 5mm Hex key
- 6mm Hex key
- 15mm spanner

FASTENERS

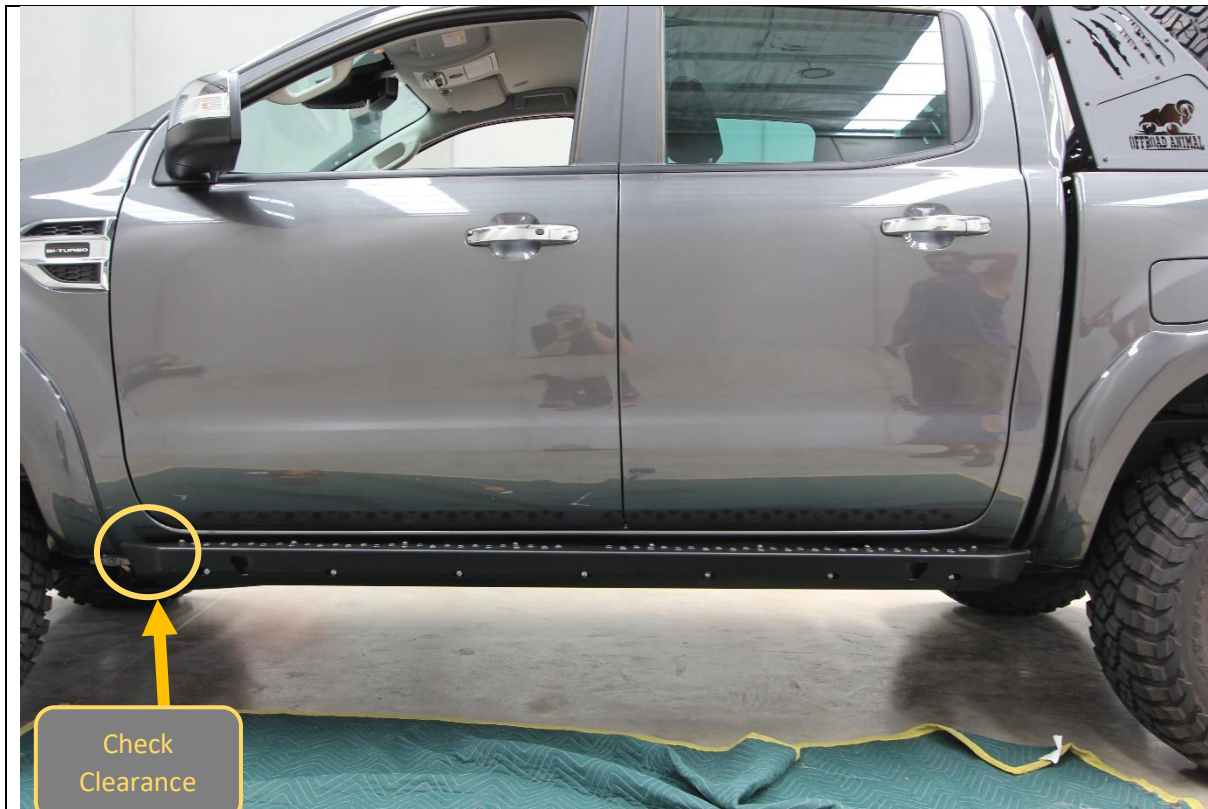
- 2x M10x25 Bolts
- 1x M8x20 Button Head bolt
- 1xM8 Flat Washer
- 2x M10 Flange Nut



- 32. With Assistance from another person, or mechanical lifting aid such as a lift trolley, Lift the slider onto the mounts.
- 33. Manipulation of position of bolts in T slot to align with mounts will be required to get slider on. Secure with M10 Flange Nuts

TOOLS REQUIRED
5mm Hex key
6mm Hex key
15mm spanner

FASTENERS
12x M10 Flange Nut

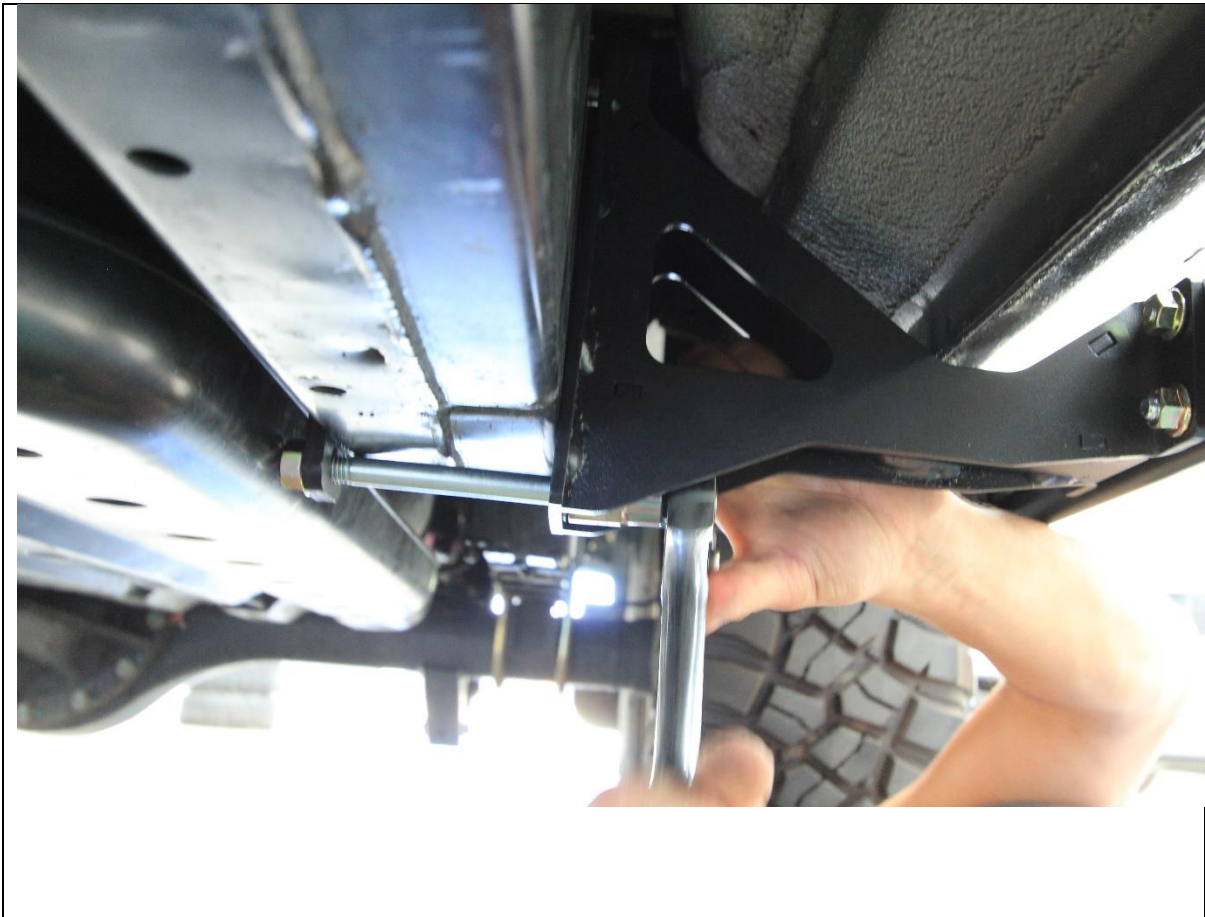


- 34. Adjust fore / aft position of sliders on mounts to achieve even appearance if required.
- 35. Take care to ensure adequate clearance where panel curves toward wheel at front end, near end cap.

TOOLS REQUIRED

FASTENERS

12x M10 Flange Nut



- 36. Once satisfied with alignment, tighten all bolts, starting with chassis mounts.
- 37. Double check mount positions against initial marks made at beginning. Adjust position as required.
- 38. Tighten front mount M12 bolts using 18mm Socket.
- 39. Tighten Mid and Rear mount bolts using 18mm Socket / Spanner. Ensure that mid / rear mounts are tightened evenly, by alternating a few turns on top then bottom bolt when tightening.

TOOLS REQUIRED
18mm Socket / Spanner

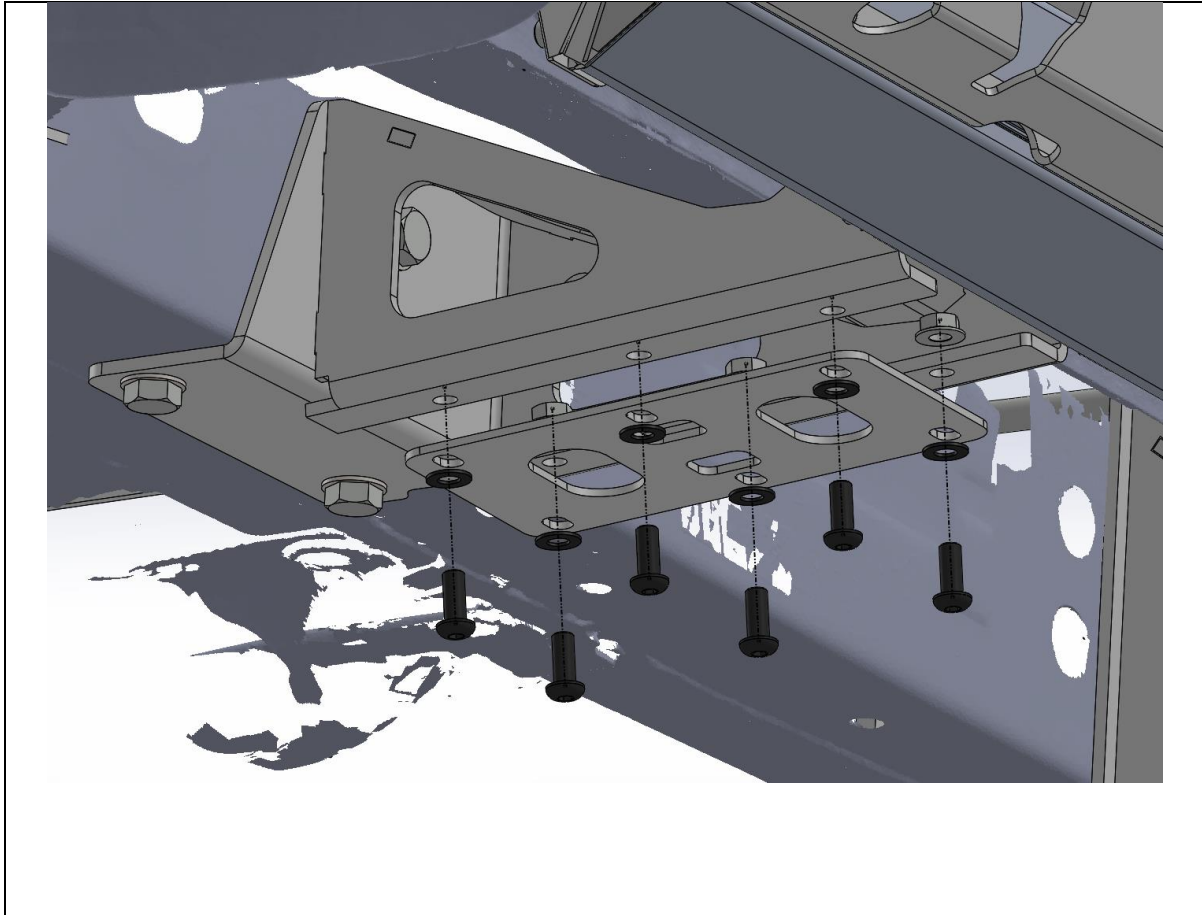
FASTENERS



40. Tighten all mount to slider M10 flange nuts using 15mm spanner. A ratcheting spanner makes this process easier

TOOLS REQUIRED
15mm Socket / Spanner

FASTENERS



41. Once front mount bolts are tightened, fit the brace plate using 6x M8x20 Button Head, M8 Flat washers and M8 Flange Nuts

TOOLS REQUIRED
15mm Socket / Spanner

FASTENERS
6x M8x20 Button Head Screw
6xM8 Flange Nut
6xM8 Flat Washer

Per Side



- 42. Fit the Offroad Animal logo plate to the small gap between pierced features on tread plate, using the pre applied double sided adhesive.
- 43. Repeat the entire process for the other side of the vehicle. Process is identical, except on LHS use M12x110mm bolt on rear bottom mount instead of M12x125 to avoid bolt from contacting fuel tank.
- 44. After that you are done!

TOOLS REQUIRED
15mm Socket / Spanner

FASTENERS



Congratulations!
Head for the tracks and enjoy your newly protected Ford Ranger!