



Nissan Navara NP300

2015– Current

PREDATOR FRONT BAR

IMPORTANT! – READ BEFORE INSTALLATION

- When installed in accordance with these instructions, the front protection bar does not affect the operation of the vehicles SRS airbags.
- This product must be installed exactly as per these instructions using only hardware supplied.
- Take a few moments to read instructions thoroughly before beginning work.
- In the event of damage to any bar component please contact OFFROAD ANIMAL to arrange repair/replacement of components.
- Do not use this product for any vehicle make or model other than that specified on these instructions.
- Do not remove labels from this product.
- This product and its fixings must not be modified in any way unless stated in these fitting instructions.
- The installation of this product is recommended for trained personnel.
- These instructions are correct at time of publication. OFFROAD ANIMAL cannot be held responsible for the impact of any changes subsequently made by the vehicle manufacturer. If you find something has changed please contact us to let us know!
- During installation it is the duty of the installer to check correct operation/clearances of all components.
- If Instructions are to be printed for reference in the workshop, it is recommended that they are printed in colour, for best legibility.

PARTS LISTING

IMPORTANT: Check all parts are present before beginning work! Contact OFFROAD ANIMAL if something is missing.

Main Parts – In the Box

Qty	Part Number	Description	Image
1	FB-NNV- NP3-15-PR- ASM1	NP300 Weldment	
1	FB-NNV- NP3-15-PR- ASM1R	NP300 Mount RH	
1	FB-NNV- NP3-15-PR- ASM1L	NP300 Mount LH	
1	U-0027	NP300 Centre skid	
1	U-0028	NP-300 Centre skid Secondary	

1	U-0026L	NP300 Predator side under panel LH	
1	U-0026R	NP300 Predator side under panel RH	
1	M-0014	DMax Predator Center Fairlead Mesh	
1	M-0015L	DMax Predator Side Mesh	
1	M-0015R	DMax Predator Side Mesh	
2	M12-NP-300	M12 Nut plate	
1	B-0397R	NP300 Chassis Brace RH	
1	B-0397L	NP300 Chassis Brace LH	

1	B-0416R	Navara Np300 Fog Light Bracket RH	
1	B-0416L	Navara Np300 Fog Light Bracket LH	
1	M-0002L	Light Cover Mesh	
1	M-0002R	Light Cover Mesh	
1	NPF-COM-SM-ASM0	Number plate flip asm Small	
2	PWS-TOP-1000	Pinch Weld PWS51T - Top Bulb Seal 1,000mm	

Small Parts – Contained in Small Parts Kit Bag

Qty	Part Number	Description
4	M8 X 30 BHCS BLACK ZINC	SCREW, BUTTON HEAD CAP, M8X30X1.25 BLACK ZP
16	M8 FLAT WASHER- BLACK ZINC	M8 FW- BLACK ZINC
16	M8 FLANGE NUT	Flange Nut, M8x1.25 G8.8 ZP
8	M8 X 16 BHCS BZP	SCREW, BUTTON HEAD CAP, M8X16X1.25 GR12.9 BLACK ZP
4	M8 X 25 HEX	Bolt Hex, M8X25x1.25, GR8.8 ZP
8	M12X30	Bolt Hex, M12X30x1.75, GR8.8 ZP
14	M12 FW LHD	M12 FW Large Heavy Duty
6	M12 Nyloc nut	M12 NYLOC NUT
2	M12 FN	M12 Flange nut
20	M6x16 BHCS BLACK ZINC	SCREW, BUTTON HEAD CAP, M6X16X1 GR12.9 BLACK ZP
14	M6 FLANGE NUT	Flange Nut, M6x1 G8.8 ZP
8	M6CN3MM	CAGE NUT M6x2.6-3.5
20	M6 FLAT WASHER BLACK ZINC	M6 FW BLACK ZP
4	M10 x 30	Bolt Hex, M10X30x[1.5], GR8.8 ZP
7	M10 Flat Washer	M10 FW
7	M10 FLANGE NUT	Flange Nut, M10x1.5 G8.8 ZP
3	M10 x 40	Bolt Hex, M10X40x[1.5], GR8.8 ZP
2	M12 x 40	Bolt Hex, M12X40x1.75, GR8.8 ZP
4	M6x25 BHCS	M6 x 25 button head cap screw
4	M6 MFW	M6 mud guard flat washer (large)
1	OFA-LOGO	OFFROAD ANIMAL METAL LOGO
1	FB-NNV-NP3-15- ADRCP	ADR COMPLIANCE PLATE

TOOLS REQUIRED

The following tools will be required to install the product.

Hand Tools	Power Tools	Workshop Equipment
Metric Socket Set 8-19mm Socket Extension Bar Metric Spanner Set 10-19mm Hex (Allen) Key Set 4-6mm Trim Puller Tool OR Flat Blade Screwdriver set Phillips Head Screwdriver set Utility Knife Side Cutters Pliers		Panel Stand or Soft Blanket Cable Ties

WORKSHOP SAFETY

It is the responsibility of the installer to always complete works in a safe manner. Make sure the following safety equipment is available and precautions are observed whilst fitting this product.

<p>Hearing Protection</p> 	<p>Always wear ear protection when using power tools.</p>
<p>Eye Protection</p> 	<p>Ensure eye protection is always worn when cutting or drilling.</p>
<p>Manual Handling</p> 	<p>Do not attempt to lift bar assemblies or rock sliders on your own.</p> <p>Always use two people to lift or use mechanical Lifting aid such as hydraulic lifting trolley.</p>
<p>Vehicle Support</p> 	<p>Always ensure vehicle is properly supported when working on it. Do not attempt to fit products whilst suspension work is being carried out. Do not work under a vehicle supported only by a jack.</p>



1. Unpack everything and make sure everything is present

TOOLS REQUIRED

FASTENERS



2. Open bonnet and remove clips for top of grill cover panel
3. More clips behind grill under panel shown, remove all

TOOLS REQUIRED

Flat head screwdriver or trim tool

FASTENERS

Retain for later use



4. Remove Grill

TOOLS REQUIRED

FASTENERS



5. Remove factory bash plate and lower panels under bumper

TOOLS REQUIRED

Small flat blade screwdriver, 10mm socket or spanner

FASTENERS

Retain for future use



6. Remove screw from inside edge of front quarter panel

TOOLS REQUIRED

10mm socket

FASTENERS

discard



7. Remove all clips securing centre of bumper to vehicle

**TOOLS
REQUIRE**
D
Flat head
screw
driver or
trim tool

FASTENER
S



- 8. Pull bumper away from panel as shown
- 9. Repeat for other side
- 10. Pull bumper off vehicle

TOOLS REQUIRED

FASTENERS



11. Remove white bumper keepers from each side

TOOLS REQUIRED

10mm socket
Flat head screw driver

FASTENERS

Factory 10mm head bolts
Discard



12. Remove air guides as shown

TOOLS REQUIRED

Phillips head screwdriver or trim tool

FASTENERS

Factory screws – discard.



13. Remove lower air guide by removing 4 clips; 2 front (above) and 2 rear(below)



TOOLS REQUIRED
Flat head screw driver or trim tool

FASTENERS

Discard



14. Remove and discard air guide

TOOLS REQUIRED

FASTENERS



15. Remove all 4 bolts securing crash beam

TOOLS REQUIRED

I think it was an 18mm, but you can easily check without me telling ehh.

FASTENERS



16. Remove small air guides as shown

TOOLS REQUIRED
Flat head screw driver or trim tool

FASTENERS

Discard



- 17. Fit mounts as shown with factory bolts previously removed
- 18. Leave all bolts loose on mounts at the moment

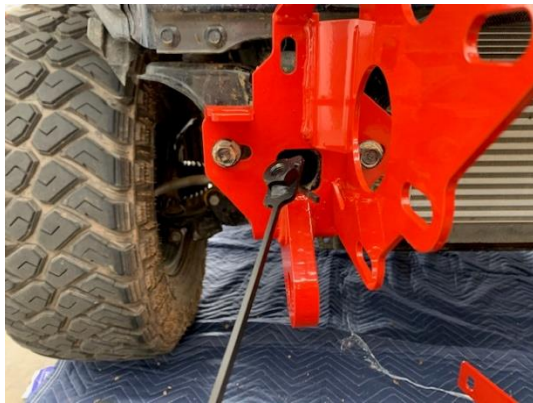
TOOLS REQUIRED

FASTENERS

Factory bolts



19. On Right hand side you will need to feed nut plates through to secure with M12x40 bolts



TOOLS REQUIRED

FASTENERS

- M12 x 40 (2)
- M12 FW (2)
- M12 Nut plates



20. Fit factory bolts on LHS as shown

TOOLS REQUIRED

FASTENERS

Factory bolts



21. Fit Chassis brace as shown
22. Use M10x 30 bolt and flat washer and flange nut through side and top
23. Leave bottom open for now
24. Repeat for other side

TOOLS REQUIRED

Depends on winch supplied fasteners

FASTENERS

M10x30 (4)
M10 FW (4)
M10 FN (4)



25. Fit cage nuts to bull bar by squeezing them in from above or using a flat head screwdriver to push them in

**TOOLS
REQUIRED**

Flat head screw
driver

FASTENERS

M6 Cage nuts (8)



- 26. Fit pinch weld to bar on top of wings (under head lights and down the side)
- 27. Repeat for other side

**TOOLS
REQUIRED**

FASTENERS



28. With the aid of a lifting table or a friend, lift bar onto vehicle

Leave a 15-20m gap between bar and quarter panels and lights.

TOOLS REQUIRED

FASTENERS



- 29. Place at least 2 bolts in mounts to secure bar and check fitment left to right of bar on vehicle. Once happy torque down all chassis mount bolts. Use flange nuts for these and do up finger tight
- 30. Once happy insert all M12x30 bolts through mounts into chassis and put large washers either side and M12 Nyloc nuts
- 31. Check in and out and up and down positioning of bar to vehicle and torque down all fasteners **Leave a 15-20mm gap between bar and quarter panels and lights.**

TOOLS REQUIRED

16mm, 17mm, 18mm and 19mm socket

FASTENERS

M12 x 30 (8)
M12 FW(14)
M12 FN (2)
M12 Nyloc (6)



- 32. If not fitting a winch proceed with steps 33-35, otherwise skip to step 36
- 33. Fit centre mesh panel as shown. Use 2 M8 x 16 Button Head Cap screws with washers and flange nuts through top and 2 M8 x 25 Hex bolts, washers and flange nut through bottom

**TOOLS
REQUIRED**
5mm Allen key
13mm spanner
or socket

FASTENERS

M8x16 BHCS
(2)
M8 washers
(4)
M8 flange nuts
(4)
M8x25 Hex
bolts (2)



- 34. Fit side panels as shown with M8 button head cap screw washer and flange nut. Leave bottom holes open at the moment
- 35. Repeat for other side

**TOOLS
REQUIRED**

5mm Allen Key

FASTENERS

M8x16 BHCS (2)
M8 washers (2)
M8 flange nuts
(2)



- 36. If fitting a winch do so now
- 37. The bar is designed to fit most low mount winches, in foot down configuration. WARN ZEON 10 is largest winch confirmed to fit.
- 38. The control box should be mounted on top of the winch. Winches usually come with a bracket to allow this. Refer to winch manufacturer. Otherwise you can mount it off to the side

TOOLS REQUIRED

- 16mm Spanner
- 16mm Socket
- 5mm Allen Key
- 13mm spanner

FASTENERS

- 2x M10x25 Hex Head
- 2x M10 Flat Washer
- 2x M10 Flange Nut
- 4x M8x30 Button Head
- 4x M8 Flange Nut
- 4xM8 Flat Washer
- 2x P-0072 Shim



- 39. Prepare the Center mesh panel for fitment.
- 40. If Required, Fit winch fairlead to Mesh Fairlead Mount (M-0014). Use M10 or 3/8" Fasteners supplied with winch. The bar is only compatible with Hawse type fairleads.
- 41. Fit Number plate flip kit to fairlead mount, using fasteners supplied in kit.

TOOLS REQUIRED
5mm Allen Key
18mm Socket /
Spanner

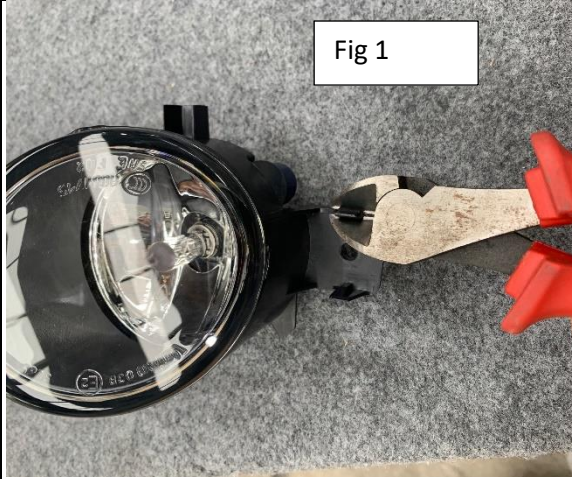

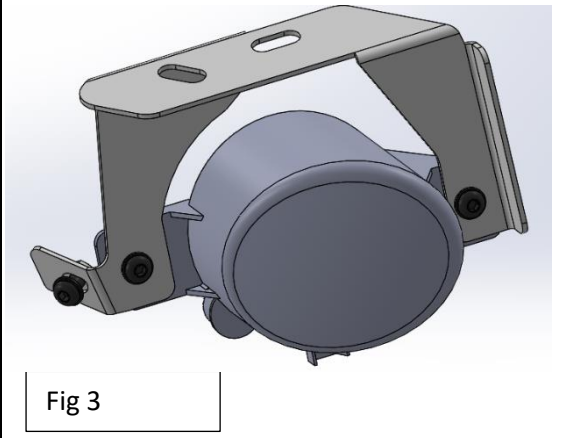
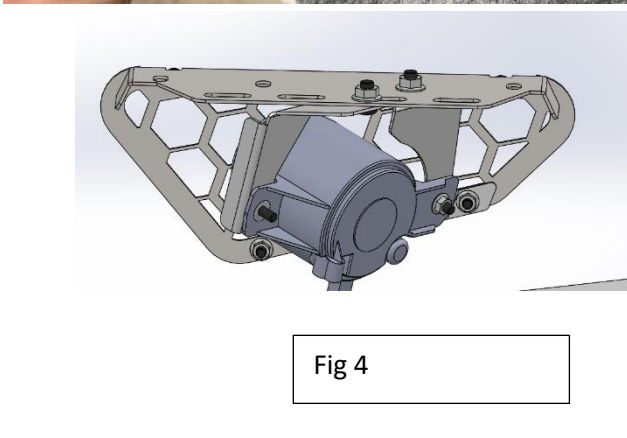
FASTENERS
4x M8x20 Button
Head
4x M8 Flat Washer



- 42. Fit the Mesh Fairlead Mount (M-0014) to the center of the bar, using M8x16 Button head (Top), M8x25 hex (Bottom) M8 Flat washers and M8 Flange Nuts.
- 43. Tighten fasteners using 13mm socket / spanner and 5mm Allen Wrench.
- 44. Fit Number plate flip and number plate to centre mesh panel

TOOLS REQUIRED
13mm Spanner
5mm Allen Wrench
4mm Allen Wrench

FASTENERS
8x M6x16 Button Head
8 M6 Flat Washer
2x M8x25 Hex Head
2x M8 Flange Nut
2x M8 Flat Washer

 <p>Fig 1</p>	 <p>Fig 2</p>	
 <p>Fig 3</p>	 <p>Fig 4</p>	
<p>45. If your vehicle is fitted with factory fog lights now is the time to fit them, If not skip to step 51</p> <p>46. Trim the forward-facing tabs off the light as shown in fig 1 above</p> <p>47. Fig 2 shows trimmed flat surface ready for mounting</p> <p>48. Fit lights to supplied fog light bracket as shown (fig 3) with M6 button head cap screws</p> <p>49. Fit Lights in bracket to Mesh panel U-0002R and U-0002L (Fig 4) with M8 x 16 bhcs, washers and flange nuts</p> <p>50. Repeat for other side</p>		<p>TOOLS REQUIRED</p> <p>4mm Allen Key Side cutters</p>
		<p>FASTENERS</p> <p>M6 x 16 BHCS (4) M6 FW (2) M6 FN (2) M8 x 16 BHCS (4) M8 FW (4) M8 FN (4)</p>



51. Fit mesh panels M-0002R/L to bar with fog light with M6 Hardware. If no fog lights used simply fit Mesh panel to bar with M6 hardware
52. Fit under panels as shown with M6 x 16 BHCS and Flat washers. Do not forget M8 x 25 bolts to attached panel to red mounts
53. Repeat for other side



TOOLS REQUIRED
4mm Allen Key

- FASTENERS**
- M6 x 16 BHCS (16)
 - M6 FW (16)
 - M6 FN (8)
 - M8 x 25 (2)
 - M8 FW (2)
 - M8 FN (2)



- 54. If fitting light bar inside centre of bull bar, do so now, otherwise skip this step.
- 55. Place light in bar and secure with supplied bolts



TOOLS REQUIRED
13mm spanner

FASTENERS
Supplied with light



56. Fit Bash plate as shown with M8 x 30 BHCS washers and flange nuts. Leave off bottom bolts

TOOLS REQUIRED
5mm Allen Key

FASTENERS

M8x 30 bhcs (4)
M8FW (4)
M8 FN (4)



- 57. Fit secondary bash plate as shown. Use M10 hardware through both bash plates into mounts up top on sides. And M6 through factory crossmember
- 58. Torque all bolts

TOOLS REQUIRED
16 or 17mm spanner or socket

FASTENERS
M10 x 40 (3)
M10 FW (3)
M10 FN (3)
M6x25 BHCS (4)
M6 MFW (4)
M6 FN (2)



- 59. If fitting stealth top hoop, do so now with supplied M10 hardware. Both through top of bar and torque bolts. Fit light inside as well same as in bar.
- 60. Fit logo plate to front of bar as shown, and compliance plate to lower bash plate

TOOLS REQUIRED
16 or 17mm spanner

FASTENERS

- M10 x 30 (2)
- M10 FW (2)
- M10 NN (2)



61. Re fit grill and you're done.

TOOLS REQUIRED

FASTENERS

Factory clips