



## Jeep Wrangler JL and Gladiator JT MY2019-current Predator bull bar

### **IMPORTANT! – READ BEFORE INSTALLATION**


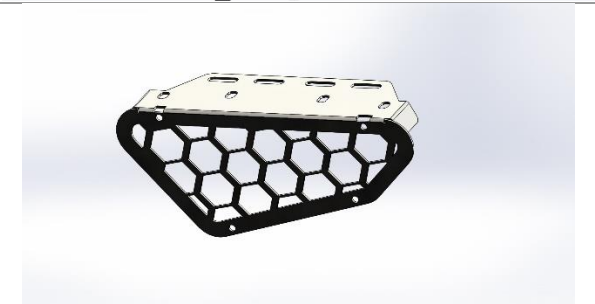
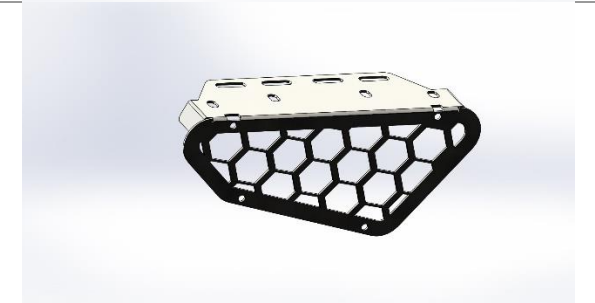


- When installed in accordance with these instructions, the front protection bar does not affect the operation of the vehicles SRS airbags.
- This product must be installed exactly as per these instructions using only hardware supplied.
- Take a few moments to read instructions thoroughly before beginning work.
- In the event of damage to any component please contact OFFROAD ANIMAL to arrange repair/replacement of components.
- Do not use this product for any vehicle make or model other than that specified on these instructions.
- Do not remove labels from this product.
- This product and its fixings must not be modified in any way unless stated in these fitting instructions.
- The installation of this product is recommended for trained personnel.
- These instructions are correct at time of publication. OFFROAD ANIMAL cannot be held responsible for the impact of any changes subsequently made by the vehicle manufacturer. If you find something has changed please contact us to let us know!
- During installation it is the duty of the installer to check correct operation/clearances of all components.
- If Instructions are to be printed for reference in the workshop, it is recommended that they are printed in colour, for best legibility.
- Estimated install time: 2 hours

# PARTS LISTING

**IMPORTANT:** Check all parts are present before beginning work! Contact OFFROAD ANIMAL if something is missing.

## Main Parts – In the Box

Qty	Part Number	Description	Image
1	FB-JWR-JL-19-PR-ASM1	JL Bull bar Predator weldment	
1	B-0106R	Fog light mount LH	
1	B-0106L	Fog light mount RH	
1	B-0107L	Jk wing brace LH	

<p>1</p>	<p>B-0107R</p>	<p>JK wing brace RH</p>	
<p>1</p>	<p>M-0002L</p>	<p>Light Cover Mesh LH</p>	
<p>1</p>	<p>M-0002R</p>	<p>Light Cover Mesh RH</p>	
<p>1</p>	<p><b>Optional part winch delete plate B-0110</b></p>	<p>JK winch delete plate</p>	
<p>1</p>	<p><b>Optional part Stealth hoop TB-COM- JK-ASM1</b></p>	<p>Top tube JK stealth</p>	

<b>1</b>	<b>OPTIONAL PART ROUND TOP TUBE</b> TB-COM-JK-RD-ASM1	JK ROUND TUBE 3 IN	
<b>1</b>	<b>OPTIONAL PART SKID PLATE KIT</b> FB-JWR-JL-19-PR-ASM2	JL skid plate	

**Small Parts – Contained in Small Parts Kit Bag**

Qty	Part Number	Description
8	M10 x 30	M10 x 30 Hex Bolt Z/p
8	M10 SW	M10 Spring Washer
8	M10 FW	M10 Flat Washer
8	M6x16 bhcs bz	M6 x 16 Button Head Cap screw black zinc
8	M6 FW bz	M6 Flat washer black zinc
8	M6 FN	M6 Flange nut
4	M8 FW BZ	M8 flat washer black zinc
4	M8 x 20 BHCS BZ	M8 x 20 button head cap screw black zinc
10	M8 FN	M8 Flange nut
6	M8 x 25	M8 x 25 Hex bolt zp
6	M8 FW	M8 Flat washer
8	M4 x 20 Pan	M4 x20 Pan head screw Philips
8	M4 FN	M4 flange nut
1	FB-JWR-JL-19-PR-ADRCP	ADR Compliance plate JK bar
1	ORA logo	Offroad animal logo plate

Optional Small Parts kit for Skid Plate

Qty	Part Number	Description
4	M8 x 20 BHCS BZ	M8 x 20 Button Head Cap Screw Black Zinc

4	M8 FW BZ	M8 flat washer black zinc
---	----------	---------------------------

## Small Parts kit for Winch delete Plate

Qty	Part Number	Description
4	M6 FN	M6 flange nut
4	M6 x 20 BHCS BZ	M6 x 20 Button head cap screw black zinc
4	M6 FW BZ	M6 flat washer black zinc

## Small Parts kit for Stealth Top Tube

Qty	Part Number	Description
2	M10 FW	M10 Flat washer
2	M10 x 30	M10 x 30 Hex bolt zinc plate
2	M10 NY	M10 Nyloc Nut
2	M10 SW	M10 spring washer

## Small Parts kit for Round Top Tube

Qty	Part Number	Description
2	M12 FW	M12 Flat washer
2	M12 x 30	M12 x 30 Hex bolt zinc plate
2	M12 SW	M12 Spring washer

## TOOLS REQUIRED

The following tools will be required to install the product.

Hand Tools	Power Tools	Workshop Equipment
Allan keys 4, and 5mm Spanners 10mm + 13mm + 15mm + 16mm + 17mm + 18mm Phillips head screw driver Trim tool, or flat head screw driver		Adhesive silicone (if equipped with fwd parking sensors)

## GENERAL WARNINGS

No warnings for this product



1. Start by removing 2 clips in front of grill

**TOOLS REQUIRED**

**Trim tool or flat head  
screwdriver**

**FASTENERS**

discard



2. Remove all clips from under bumper holding plastic splash guard

**TOOLS REQUIRED**

Trim tool or flat head  
screwdriver

**FASTENERS**

discard





- 3. Remove retaining bolts on splash guard (2)
- 4. Remove splash guard

**TOOLS REQUIRED**

**Socket 10mm**

**FASTENERS**

Discard fasteners



5. Remove reinforcement bracket as shown on both sides

**TOOLS REQUIRED**

**FASTENERS**

Discard



6. Remove Nuts securing front crash beam to chassis (qty 8)

**TOOLS REQUIRED**

**16mm Socket**

**FASTENERS**

Discard



- 7. Unplug harness as shown
- 8. Remove bumper

**TOOLS REQUIRED**

**FASTENERS**





9. If your old bumper had parking sensors you'll need to pull factory bumper apart to get to them, Remove all perimeter M6 screws with an 10mm socket or spanner

**TOOLS REQUIRED**  
**10mm Socket and ratchet**

**FASTENERS**

Discard



10. Once all screws have been removed, you'll need to separate the inner bumper from the outer shell.

**TOOLS REQUIRED**

**FASTENERS**



11. Remove all retaining clips for wiring

**TOOLS REQUIRED**  
Trim tool, screw driver or  
plyers

**FASTENERS**





12. If parking sensors are fitted, you'll need to pry the housings off the bumper shell. Make sure you remove the sensors first

**TOOLS REQUIRED**

**Trim tool or flat head screw driver**

**FASTENERS**





13. To refit the sensor to the bull bar, you'll need to dab the front of the housing like shown with adhesive silicone. However, you'll need to do a dry fit in bumper before this step to ensure you know sensor orientation.

**TOOLS REQUIRED**  
Caulking gun and Adhesive  
Silicon

**FASTENERS**



14. Stick housings to inside of bull bar paying special attention to sensor wire orientation. Dry fit and make sure all sensor wires can reach before gluing

**TOOLS REQUIRED**

**FASTENERS**



15. Allow at least an hour for silicone to set then insert each sensor to Its housing

**TOOLS REQUIRED**

**FASTENERS**





16. Remove Factory Fog lights from bumper.

**TOOLS REQUIRED**  
8mm Socket

**FASTENERS**

Discard



- 17. Fit Factory fog lights to Fog light brackets as shown using supplied M4 hardware
- 18. Repeat for other side

**TOOLS REQUIRED**

**Phillips Head screw driver**

**FASTENERS**

M4 x 20 (8)

M4 FN (8)



19. Fit fog light bracket to mesh panel like shown using M8 hardware

**TOOLS REQUIRED**

**13mm Socket**

**FASTENERS**

M8 x 20 Hex (4)

M8 FW (4)

M8 FN (4)





20. Fit mesh panel and fog light to bar and secure with M6 black button head cap screws washers and flange nuts

**TOOLS REQUIRED**

**4mm Allen Key  
13mm Spanner**

**FASTENERS**

**M6 x 16 BHCS (4)  
M6 FW (8)  
M6 x 25 (4)  
M6 FN (8)**



21. Fit wing Brace to wing a shown. Use M8 x 20 black button head cap screws on the outside and the M8 hex bolts on the inside

**TOOLS REQUIRED**  
5mm Allan Key  
13mm Socket or spanner

**FASTENERS**  
M8x20 BHCS BK (4)  
M8 FW BK (4)  
M8 x 25 Hex (4)  
M8 FW (4)  
M8 FN (8)





22. Lift bar on to vehicle

**TOOLS REQUIRED**

**FASTENERS**



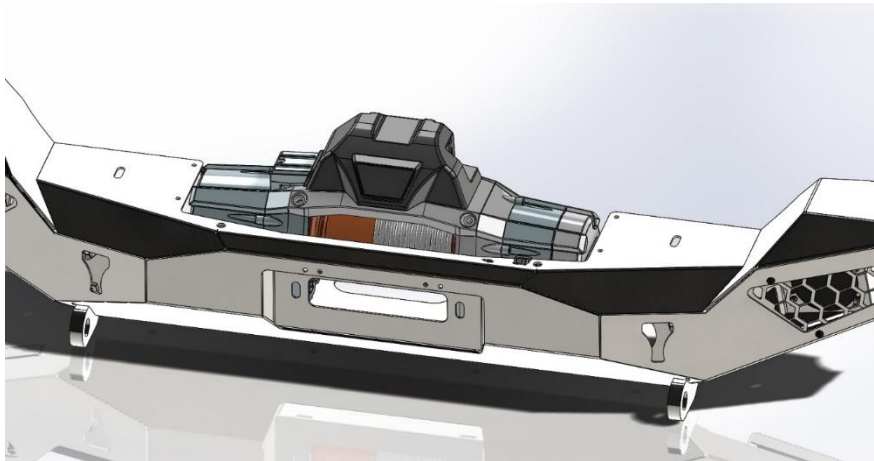
23. Insert M10x30 Hex bolts with M10 washers through chassis into bull bar and torque to 60nM. Repeat for other side.

**TOOLS REQUIRED**

**16mm spanner + 17mm spanner**

**FASTENERS**

M10 x 30 Hex bolt (8)  
M10 FW (8)  
M10 SW (8)



- 24. If fitting a winch do so now. Drop winch in from top and secure with supplied bolts from winch box
- 25. Some wide winches will require you cut off a portion of the folded edge on top of the chassis flange

**TOOLS REQUIRED**

**Angle Grinder**  
**Paint for exposed edges**

**FASTENERS**



- 26. Fit fair lead to front of bar as shown with supplied hardware from winch
- 27. Offroad Animal suggest purchasing our Number plate flip and fitting as shown

**TOOLS REQUIRED**

**FASTENERS**





- 28. IF not fitting a winch, fit number plate to front face of bar as shown with M6x20 hex bolt washer and flange nuts
- 29. Also be a lad and fit the Offroad Animal logo plate as shown. Represent the brand

**TOOLS REQUIRED**

**10mm spanner or socket**

**FASTENERS**

M6 x 20 hex (2)  
M6 FW (2)  
M6 FN (2)



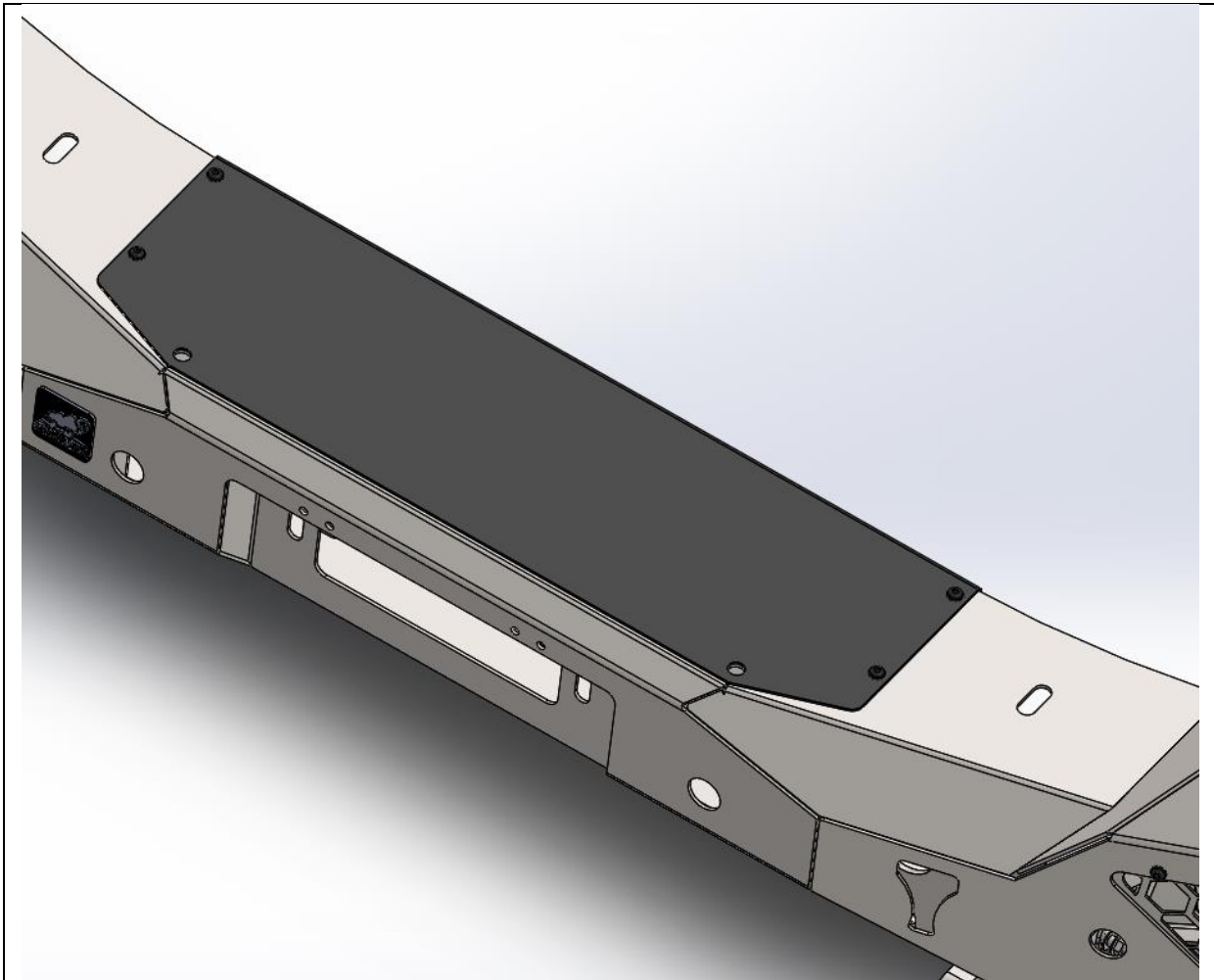
30. If fitting optional skid plate, hold plate up to bottom of bull bar and start the 4 x M8 x 30 button head cap screws with washers to hold plate in place, and re use hardware for the front

**TOOLS REQUIRED**

**5mm Allen Key**

**FASTENERS**

M8 x 30 BHCS (4)  
M8 FW (4)



31. If you are not running a winch and have purchased the optional winch delete plate, fit as shown with M6 button head cap screws, washers and flange nuts

**TOOLS REQUIRED**

**4mm Allen Key**

**FASTENERS**

M6 x 20 BHCS BK (4)  
M6 x FW BK (4)  
M6x FN (4)





32. If fitting optional stealth hoop, do so now with Supplied M10 hex bolts and nyloc nuts. You can also fit any 20-22" LED single row light bar at the same time.

**TOOLS REQUIRED**

**16 or 17mm Spanner**

**FASTENERS**

M10 x 30 Hex (2)  
M10 FW (2)  
M10 Nyloc (2)





- 33. You're now finished, go out and enjoy your new bull bar
- 34. Oh don't forget to plug back in your fog light loom and parking sensors.
- 35. And fit your compliance plate supplied underneath somewhere not in your face but visible if the fuzz wants to look at it to prove your bar is ADR compliant

**TOOLS REQUIRED**

**FASTENERS**